

WCO
2019

ACCELERATING SECURE TRADE

Achieving Operational Excellence

With Advanced Security Technology,
Data Integration, and Training

Joe Reiss, VP of Product Management & Marketing, Rapiscan Systems | AS&E

Chris Hogg, Dir of Global Software Engineering, Rapiscan Systems | AS&E

Randall Barnby, Dir of Business Development, S2 Global

Gary Heffner, Dir of Training, S2 Global

Rapiscan
systems

AS&E



Operational Excellence

Principles for success

OBJECTIVES

- Secure ports of entry while collecting duties
- Keep pace with concealment techniques
- Facilitate trade as globalization expands
- Operate efficiently with constrained resources

1 Define operational requirements

Identify and deploy appropriate technologies

2 Capture critical data

Leverage the latest detection technology and security devices to collect important information

3 Integrate the data

Generate a holistic operational picture by integrating data on a common platform

4 Automate workflows

Identify the workflows to automate and processes to measure in order to gain actionable insight

5 Invest in personnel

Employ ongoing training programs to ensure operational efficiency and effectiveness

1 Define Operational Requirements

Once operational leadership defines their needs, industry can collaborate to support their objectives with:

● **Security equipment**

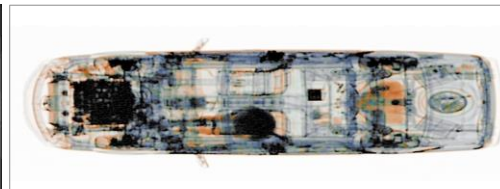
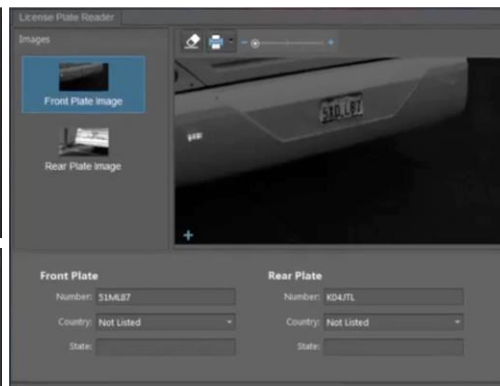
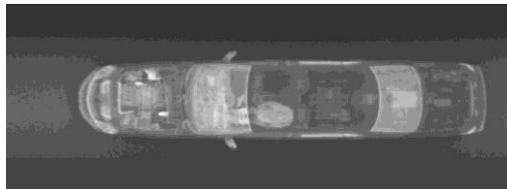
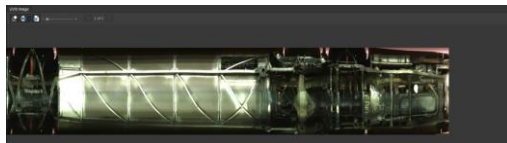
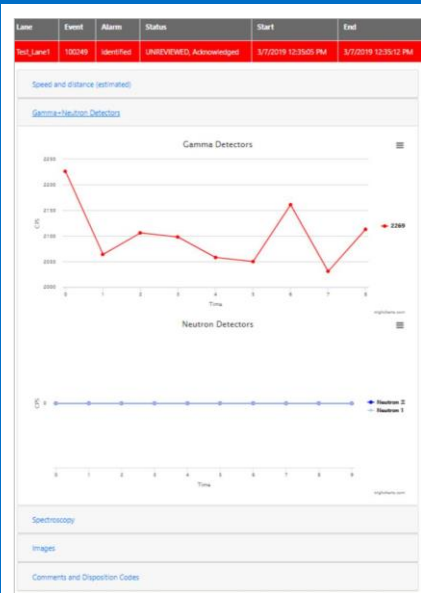
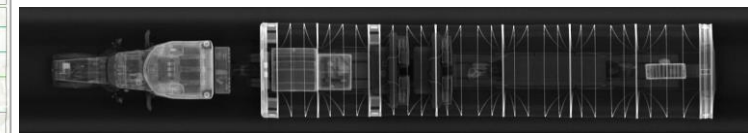
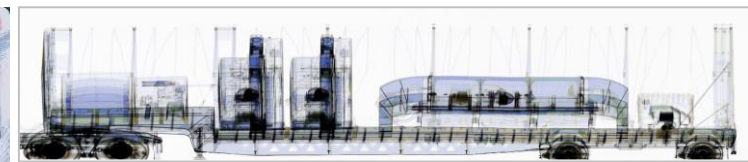
● **Software and IT services**

● **Operational support**

Operations defines objectives and leads the way to achieving operational excellence

2 Capture Critical Data

Customs agencies employ various data capture technologies

[illegible]

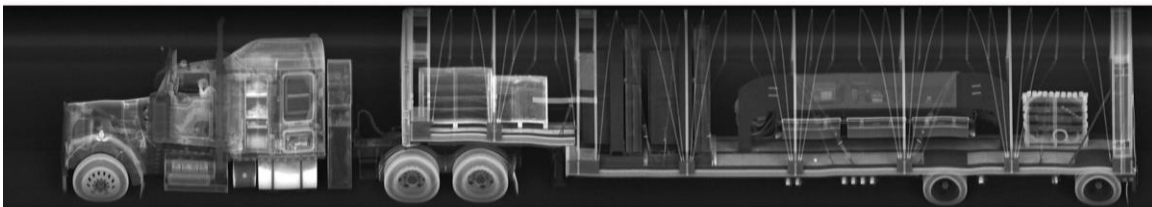
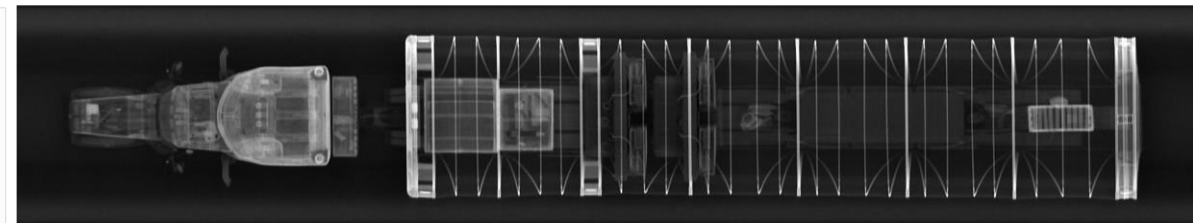
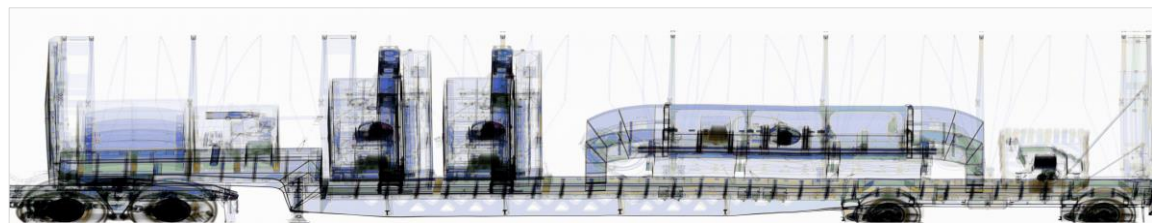
2 Capture Critical Data

Rapiscan
systems

AS&E



Detection technology is improving, delivering more data, with greater speed and efficiency



EAGLE®

Our all-new Eagle® line of high-energy, multi-technology cargo and vehicle inspection systems deliver more comprehensive detection

CARGO SCANNING & SOLUTIONS

© 2019 Rapiscan Systems | American Science and Engineering, Inc. | S2 Global

ACCELERATING SECURE TRADE

© 2019 Rapiscan Systems | American Science and Engineering, Inc. | S2 Global

3 Integrate the Data

Rapiscan[®]
systems

AS&E[®]



Manifest/
Travel Data



Shipper/
Passenger



Local
Databases



NII
Systems



Trade/Travel
Programs



Agencies



Other
Systems



CERTSCAN



Your Data System



Risk Analysis



Port Analysis



Customs and
Law Enforcement



National Security



Other Systems

4 Automate Workflows

With a common operating picture, practices can be mapped to feed, organize, and analyze data which further informs actionable intelligence

Customs officials must decide which processes to measure and how to sequence them to create workflows that lead to:

Process improvements

Increased efficiency

Accelerated, secure trade

5 Invest in Personnel

Ongoing training programs are critical components of operational excellence

- Automated detection tools and machine learning are still in the early phases of development
- Today, the range and variety of data are too broad to rely solely on automated detection
- Image analysts remain critical to finding threats and contraband in a changing environment
- Continue to focus on improving our threat detection technology and invest in robust training programs

Key Takeaways

Operational excellence is achievable today by

- Capturing data from existing and new security technology
- Integrating data via a common platform
- Automating processes using workflows
- Investing in training programs for personnel



Thank You!

Rapiscan
systems

AS&E



Rapiscan | AS&E

UK OPERATIONS
Prospect Way,
Victoria Business Park
Stoke-on-Trent ST8 7PL

US OPERATIONS
829 Middlesex Turnpike
Billerica, MA 01821

+1.978.262.8700
www.rapiscan-ase.com

S2 Global

1800 Eller Drive
Ft. Lauderdale, FL 33316
USA

+1.954.779.7102
www.screeningsolution.com