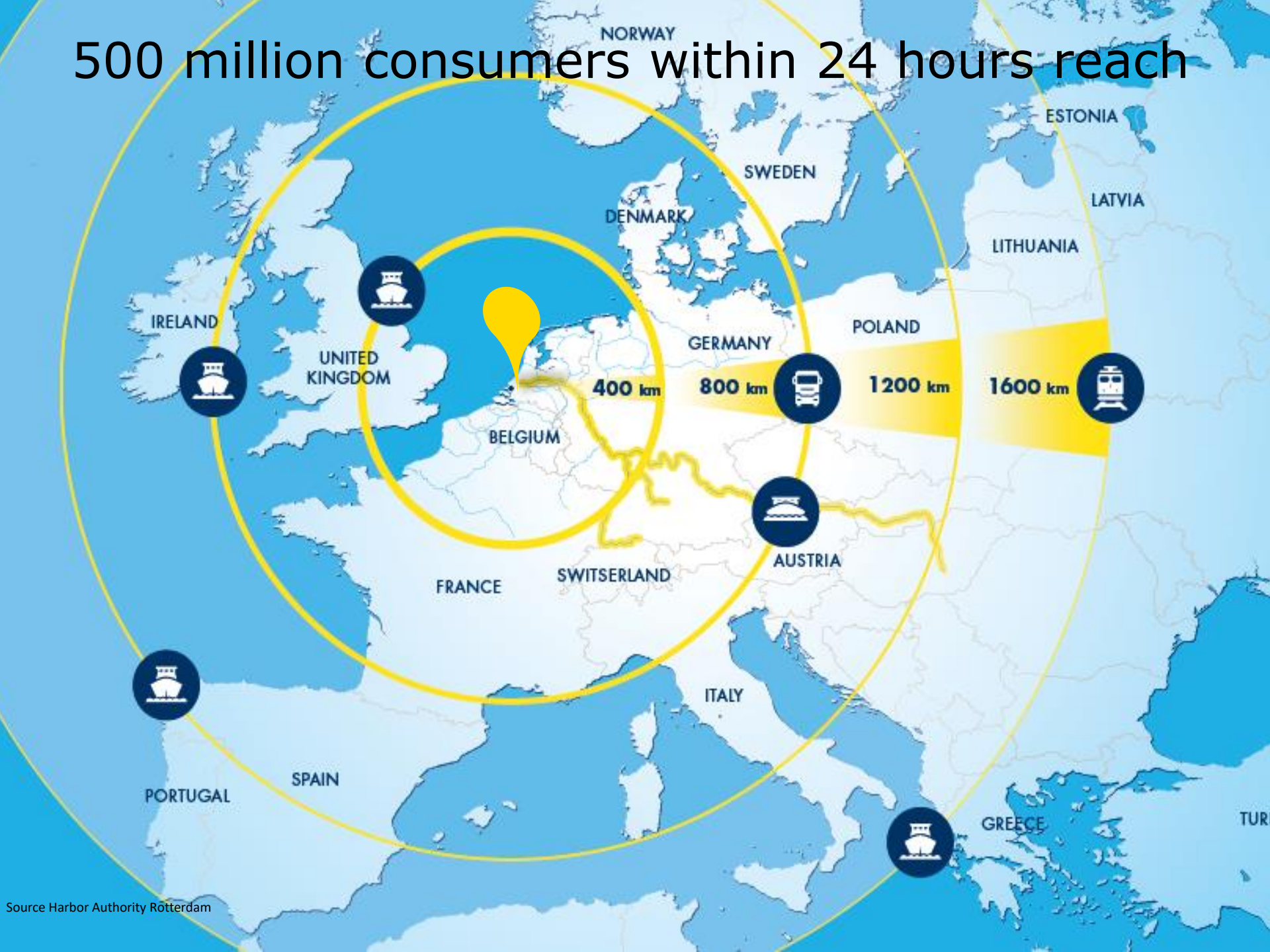


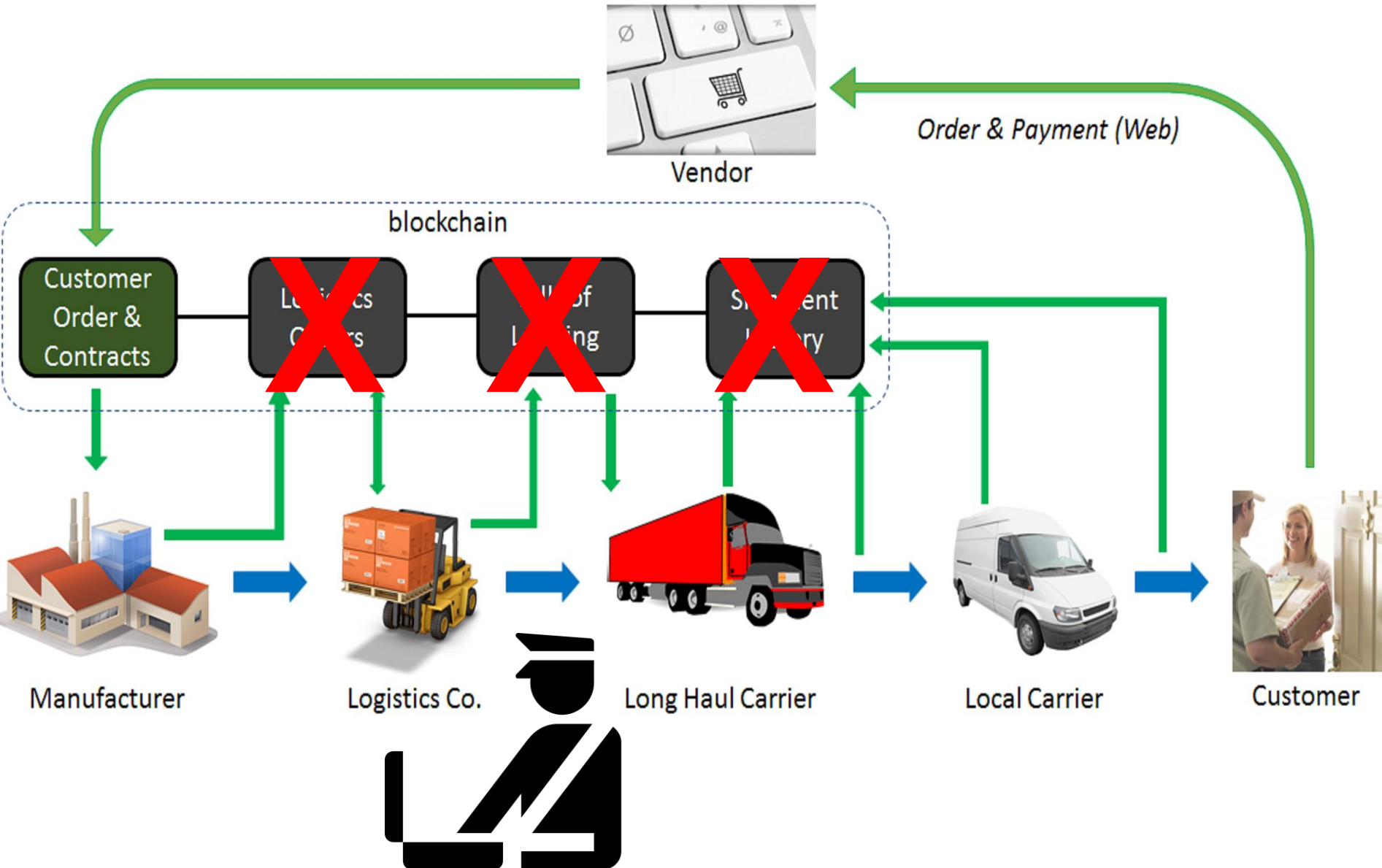


The Dutch Twist

500 million consumers within 24 hours reach



transparent supply chains?



Rotterdam Launches Hyper-Smart Container Mission

28 May 2019 09.44am

in

twitter

f

envelope

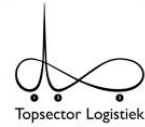
+ 21



The Port of Rotterdam has announced the departure of its “hyper-smart” Container 42, which has embarked on the first leg of a two-year data-collecting mission.



Schiphol



TRADELENS



CARGONAUT



TU Delft

HOLLAND
LOGISTICS
LIBRARY



portbase®

7 5 3 3 6 2 4 1 0 0 2 5 7 5 3 3 6 2 4 1 0 0 2 5 7 5 2 5 7 5 3 3 6 2 4 1 0 0 2 5 7 5 3 3 6 2 4 1 0 0
4 9 2 1 4 8 8 2 5 7 8 6 4 9 2 1 4 8 8 2 5 7 8 6 4 9 DATA PIPELINE 8 6 4 9 2 1 4 8 8 2 5 7 8 6 4 9 2 1 4 8 8 2 5 7
1 4 1 5 0 5 7 8 7 3 7 3 1 4 1 5 0 5 7 8 7 3 7 3 1 4 7 3 1 4 1 5 0 5 7 8 7 3 7 3 1 4 1 5 0 5 7 8 7 3



Exporter



Warehouse



Forwarder



Terminal



Shipping line



Terminal



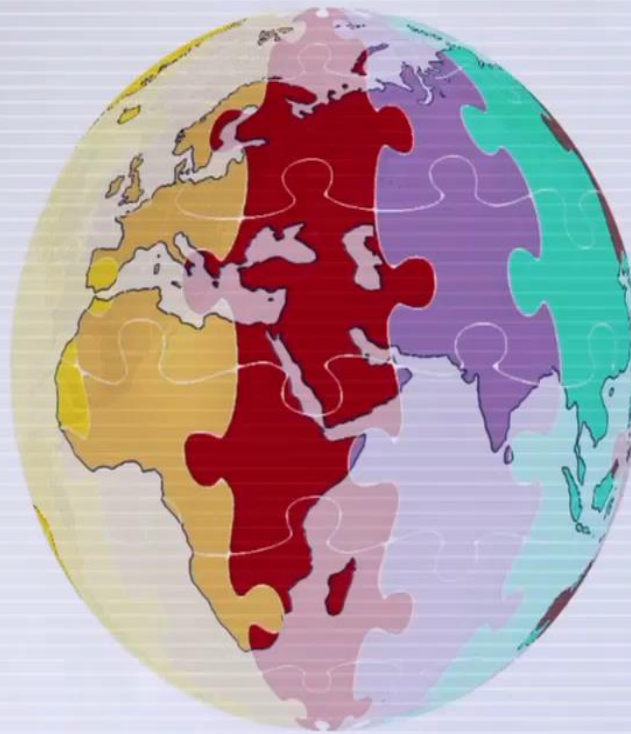
Forwarder



Warehouse



Importer



DATA PIPELINE





AUTODETECTION

AUTODETECTION GOODS

AUTODETECTION DATA

AUTODETECTION



