



AWS | Artificial Intelligence for Education

Enhancing Student Outcomes and Accelerating Research

Yuri[ko] Horvath – Solution Architect Manager

Our mission at AWS

Put machine learning in your hands

Why AWS for AI/ML?



**Broadest and deepest
set of AI and ML
services**

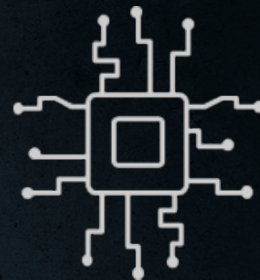
200 new features & services
launched this last year alone

Unmatched flexibility



**Accelerate your adoption
of ML with SageMaker**

70% cost reduction in data-labeling
10x faster performance
75% lower inference cost



**Built on the most
comprehensive cloud
platform optimized for ML**

AWS holds the top spots on
Stanford's benchmark, for fastest
training time, lowest cost, lowest
inference latency

AI / ML to Improve Education & Research Outcomes



Learning

- Student retention and success
- Personalized learning
- Lecture / Video transcription
- Curriculum localization
- Accessibility



Research

- Accelerated ML for Research
- Research document classification
- Scientific image analysis



Operations

- Campus experience & self service
- Marketing and Recruitment
- Enrollment forecasting
- Predictive maintenance
- Campus security

The Amazon ML stack: Broadest & deepest set of capabilities

AI Services

VISION			SPEECH		LANGUAGE		CHATBOTS	FORECASTING	RECOMMENDATIONS
									
REKOGNITION IMAGE	REKOGNITION VIDEO	TEXTRACT	POLLY	TRANSCRIBE	TRANSLATE	COMPREHEND	LEX	FORECAST	PERSONALIZE

ML Services

 Amazon SageMaker

Ground Truth

Notebooks

Algorithms + Marketplace

Reinforcement Learning

Training

Optimization

Deployment

Hosting

ML Frameworks + Infrastructure

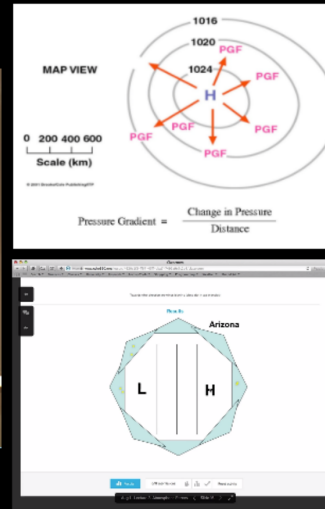
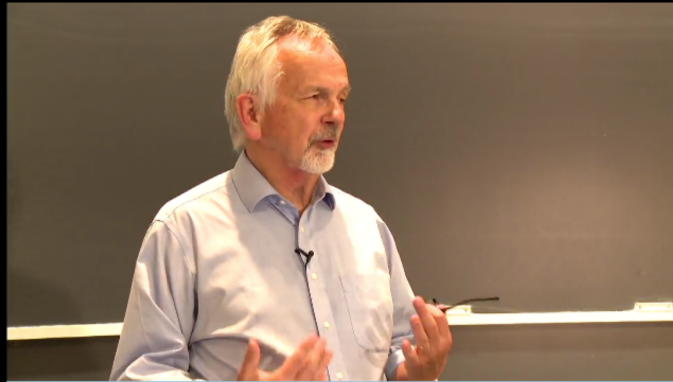
FRAMEWORKS			INTERFACES		INFRASTRUCTURE						
 TensorFlow	 mxnet	PYTORCH	 GLUON	 Keras	 EC2 P3 & P3dn	 EC2 G4	 EC2 C5	 FPGAs	 Greengrass	 Elastic inference	 Inferentia





"The Echo360 platform fosters active and engaging video-based learning that serves today's student. We're excited about Amazon Transcribe because it offers our university partners high-quality transcripts for each video, enabling more powerful search, lower cost captioning of educational video content, and enhanced note-taking, making learning assets more valuable and accessible to students."

Fred Singer
CEO at Echo360



Download

Search Transcript



In the atmosphere.

And understand that, we have enumerated the fact that there are three forces that

actually cause wind directions and wind speed and

we're gonna be able to determine what the wind speed is anywhere and

what the wind direction is anywhere by knowing those three forces.

The three forces we are interested in first of all,

our the first force is pressure gradient force.

The pressure gradient force is a force that always acts towards low pressure.

Always acts towards lower pressure no matter where you are on Earth.

There's high pressure in one spot and low pressure in another spot.

The pressure gradient force is always gonna be working towards low pressure.

Now when we say that, we're always talking about in the horizontal.

Pressure changes quite rapidly, vertically. But in terms of determining wind speed,



Getting global medical terminology right

Biodigital uses **Amazon Translate** to provide a scalable way to augment their 3D virtual body visualization with health and medicine descriptions in multiple languages. Biodigital customers can collaborate across six languages at an expected 80% cost savings compared to manual translation.





Increasing access to computer-based exams with text-to-speech

automated speech recognition

Blind candidates get “auditory” signal of timing using
Amazon Polly

AWS DeepRacer

A fully autonomous 1/18th-scale race car designed to help you learn about reinforcement learning through autonomous driving



- Build machine learning models in Amazon SageMaker
- Train, test, and iterate on the track using the AWS DeepRacer 3D racing simulator
- Compete in the world's first global autonomous racing league, to race for prizes and a chance to advance to win the coveted AWS DeepRacer Cup

AWS DeepLens

The world's first deep learning-enabled video camera for developers



- Purpose-built for ML-skills development
- Fully programmable & customizable
- Build custom Amazon SageMaker models
- 10-minutes to your first deep learning project

AI / ML to Improve Education & Research Outcomes



Learning

- Student retention and success
- Personalized learning
- Lecture / Video transcription
- Curriculum localization
- Accessibility



Research

- Accelerated ML for Research
- Research document classification
- Scientific image analysis



Operations

- Campus experience & self service
- Marketing and Recruitment
- Enrollment forecasting
- Predictive maintenance
- Campus security

Machine Learning Process is Hard & Time Consuming

Deployment

- Setup and manage inference clusters
- Manage and auto scale inference APIs
- Testing, versioning, and monitoring



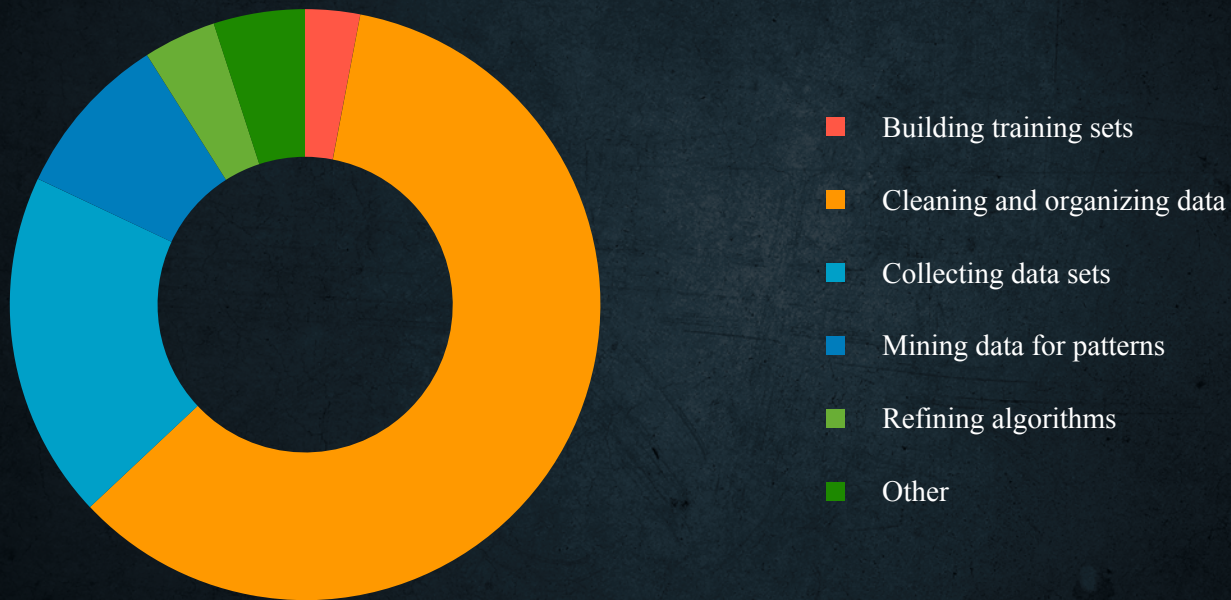
Data wrangling

- Setup and manage Notebook environments
- Get data to notebooks securely

Experimentation

- Setup and manage clusters
- Scale/distribute ML algorithms

Data Preparation Account for ~80% of Work



The Amazon ML stack: Broadest & deepest set of capabilities

AI Services

VISION			SPEECH		LANGUAGE		CHATBOTS	FORECASTING	RECOMMENDATIONS
									
REKOGNITION IMAGE	REKOGNITION VIDEO	TEXTRACT	POLLY	TRANSCRIBE	TRANSLATE	COMPREHEND	LEX	FORECAST	PERSONALIZE

ML Services



Amazon SageMaker

Ground Truth

Notebooks

Algorithms + Marketplace

Reinforcement Learning

Training

Optimization

Deployment

Hosting

ML Frameworks + Infrastructure

FRAMEWORKS			INTERFACES		INFRASTRUCTURE						
 TensorFlow	 mxnet	 PYTORCH	 GLUON	 Keras	 EC2 P3 & P3dn	 EC2 G4	 EC2 C5	 FPGAs	 Greengrass	 Elastic inference	 Inferentia



Early Detection of Diabetic Retinopathy



Analyzed more than 80,000 fundus photos captured during retinopathy screenings.

Student Researchers used AWS EC2, S3, and EBS to manage, analyze, and review the many gigabytes of data.





Topic modeling helps in discovering the underlying themes across a collection of documents

The researchers conducted nearly half a million topic modeling experiments to study how human language is processed by computers.

The 1.1 Million vCPU count usage is comparable to the core count on the largest supercomputers in the world.



- Trained caching algorithm using Amazon SageMaker
- Impacts 100 PB of data and helps users find relevant images
- Improved cache hit by 2x and reduced storage costs by 50%



Complete research in hours
which previously took weeks
while reducing cost

accelerate research

predict functional sites in three-dimensional (3D) molecular
structures

AI / ML to Improve Education & Research Outcomes



Learning

- Student retention and success
- Personalized learning
- Lecture / Video transcription
- Curriculum localization
- Accessibility



Research

- Accelerated ML for Research
- Research document classification
- Scientific image analysis



Operations

- Campus experience & self service
- Marketing and Recruitment
- Enrollment forecasting
- Predictive maintenance
- Campus security



Recommend New Test Date

Amazon SageMaker to generate and analyze many millions of calendars and created an August date and it proved so popular that there weren't enough seats the first year.

In our nearly 100 years of doing the SAT, we had never considered August.

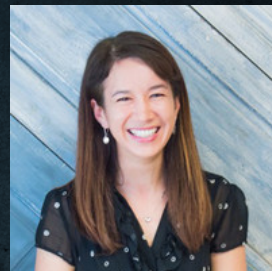




Jianjun Xu

Sr Solutions Architect - AWS

jianjx@amazon.com



Yuriko Horvath

Solutions Architect Manager - AWS

awsyuri@amazon.com

aws.ai