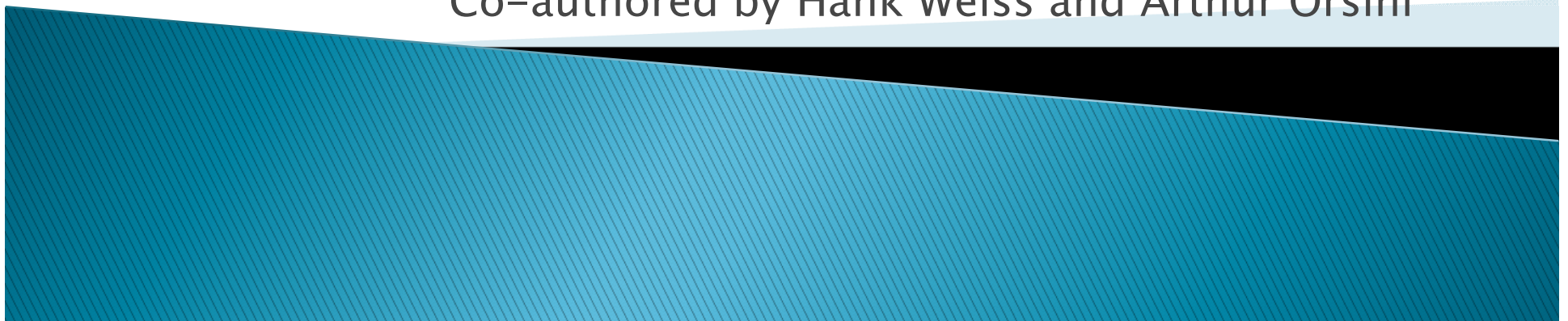


Making a healthy I M P A C T

Transport perspectives of youth non-drivers: a pilot project

Presented by Aimee Ward, MPH

Co-authored by Hank Weiss and Arthur Orsini





Adolescent Mobility Health Consortium (AMHC)

Department of Preventive and
Social Medicine,
Injury Prevention Research Unit

AMHC Aims:

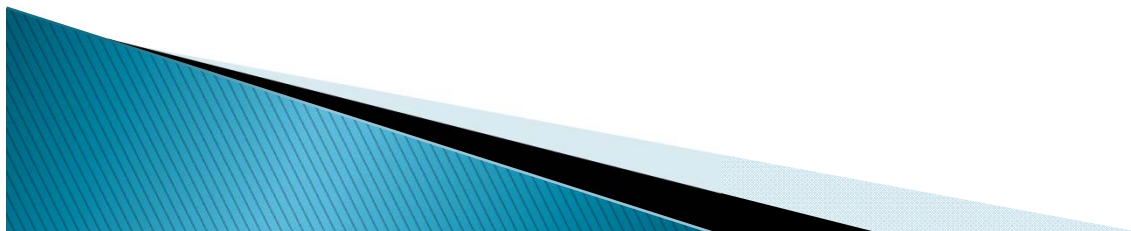


We advocate changing adolescent road safety from a focus on crash risk, to a healthier vision of less driving through mobility modal shift, to avoid car dependence in New Zealand youth.

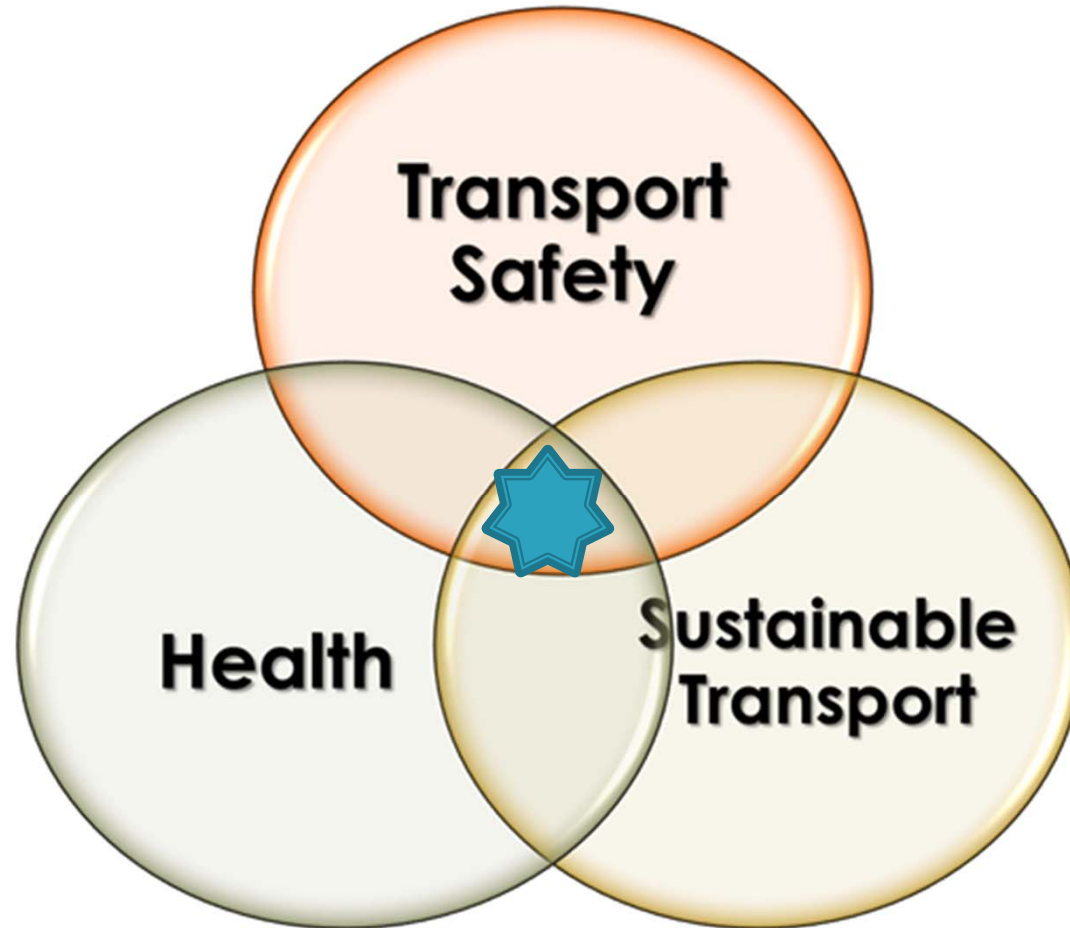


Why Youth?

- ▶ Have not yet formed car dependent habits
- ▶ Less likely to have physical barriers
- ▶ Healthy mobility habits may be engrained
- ▶ More sensitive to cost considerations
- ▶ Today's youth will experience consequences of climate change



Adolescent Mobility Health



Mobility Health, Weiss & Ward 2012

The Interactive Mobility Peer-Advisory Committee with Teens (IMPACT)

- ▶ **Design:** Qualitative case study of a community group
- ▶ **Main objective:** To create a sustainable culture of discussion surrounding mobility issues that are generated and propagated by non-driving teens
- ▶ **Baseline sample characteristics:** See hand out
- ▶ **Method:** Direct observation and interaction with subjects via focus groups

*University of Otago Ethics Committee reference #F11/004
Approved by Ngāi Tahu Research Consultation Committee*



Via anonymous questionnaire

On a scale of 1–5 (1=strongly agree; 5=strongly disagree):

- ▶ “My choice not to drive is due to a desire to protect the environment”
 - ▶ Average response: 4
- ▶ “Getting a drivers license is a rite of passage”
 - ▶ Average response: 2.3

Question asked ...

Average response ...

Via anonymous questionnaire

On a scale of 1–5 (1 =strongly agree; 5=strongly disagree):

- ▶ “In today’s economy, it can be difficult to own a car due to increasing costs of petrol, parking and maintenance”
▶ Average response: 1.6
- ▶ “If there were more options in my area, such as more public transport, convenient carpooling, or bike lanes, I would use them and perhaps delay my licensure”
▶ Average response: 1.6

Question asked ...

Average response ...

Proposed discussion themes

- ▶ **Environmental impacts of not driving**
- ▶ Economic impacts of not driving
- ▶ **Parental impacts of not driving**
- ▶ **Peer impacts of not driving**
- ▶ Is not getting a driver license an act of rebellion? Do you feel pressure to drive?
- ▶ How safe do you feel being a passenger in a car?
- ▶ **Personal thoughts on active and public transport?**



AMHC Inaugural Symposium 2012



 UNIVERSITY
of
OTAGO
Te Whare Wānanga o Ōtāgo
NEW ZEALAND

**Adolescent
Mobility Health
Consortium (AMHC)**

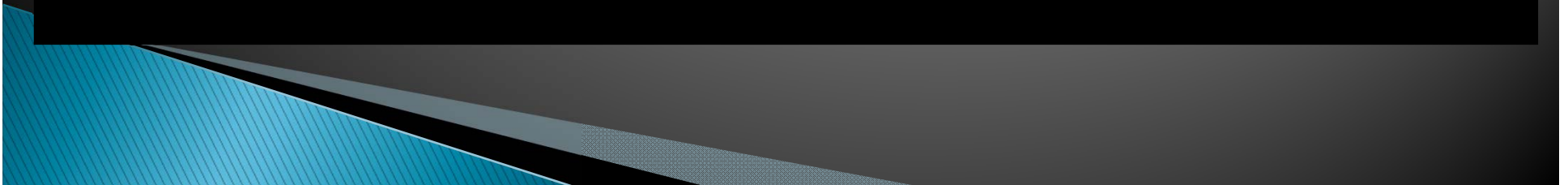
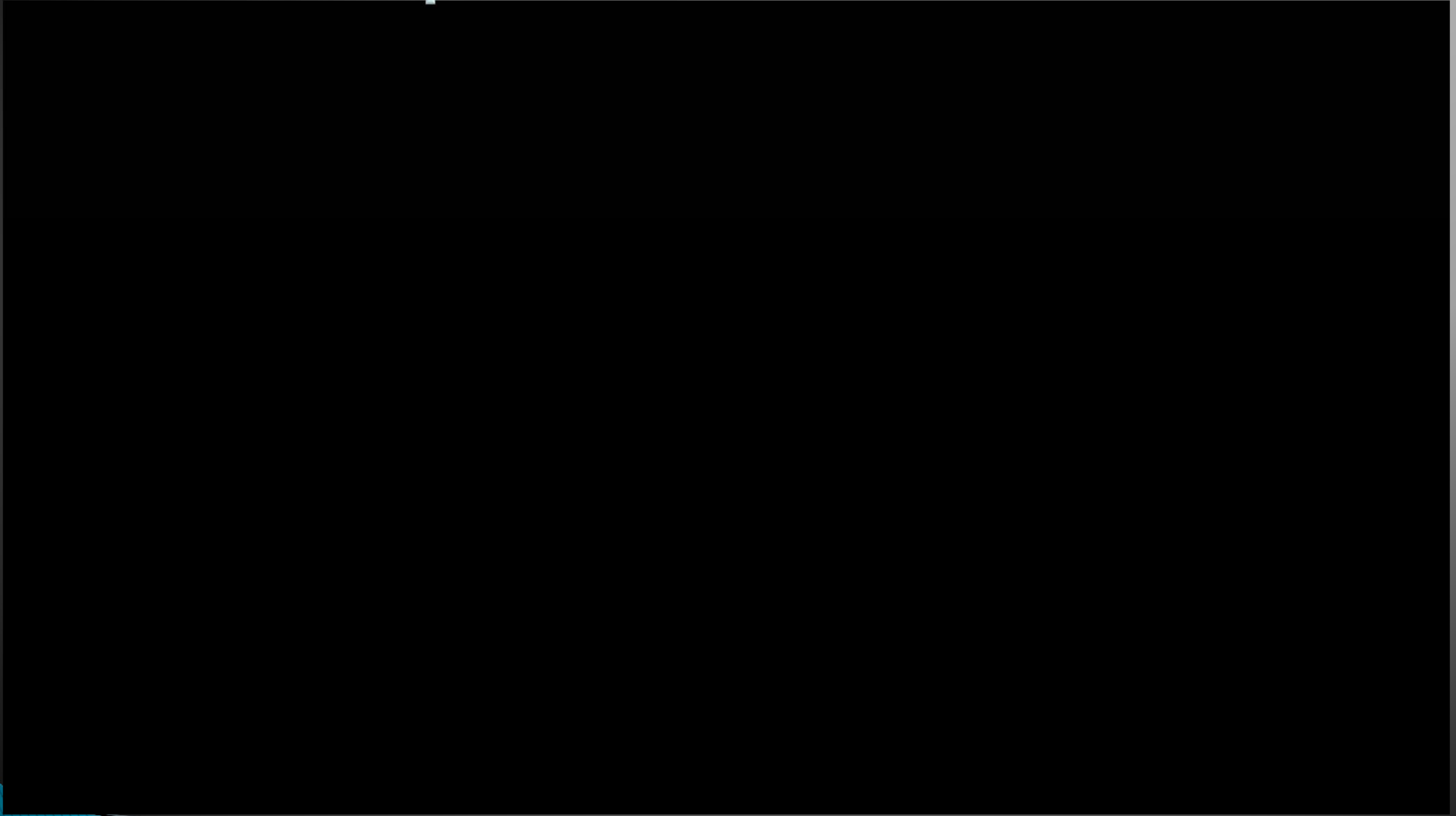
INAUGURAL SYMPOSIUM

“The road not taken”
Mobility Health: New Directions in
Teen Mobility Management
University of Otago, Dunedin, New Zealand



Our teen panel

Video clips from Teen Panel



Outcomes thus far

- ▶ Symposium teen panel
- ▶ Individual project development on-going
- ▶ In-depth narrative of the experience on-going
- ▶ “I’ve never been asked ...”



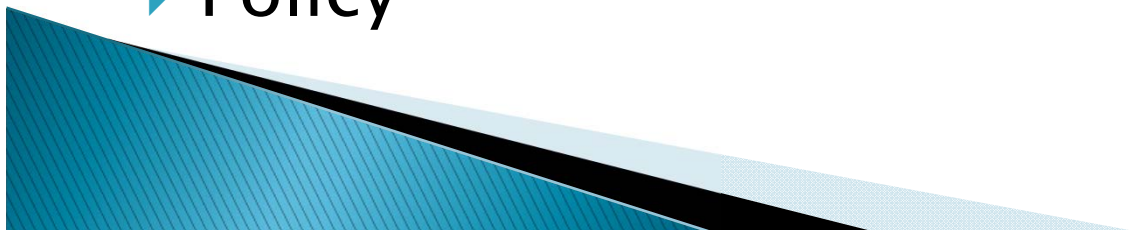
Future directions and applications

Directions

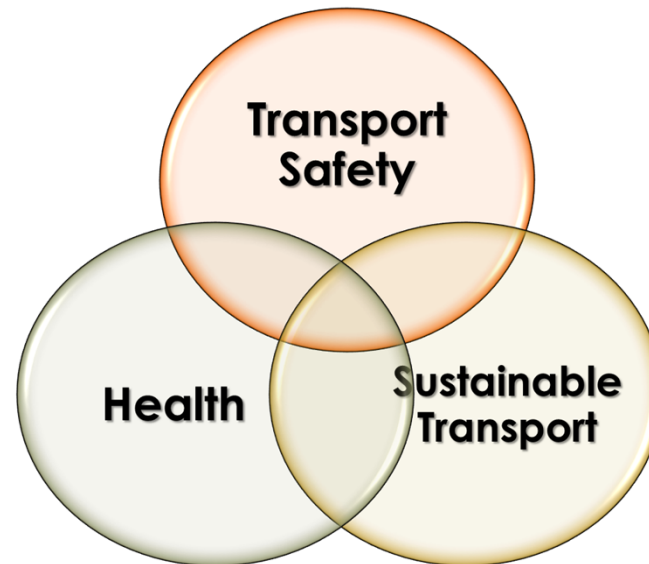
- ▶ Symposium 2013 – Teen panel to be facilitated by a teenager
- ▶ Continuation of a new “layer” of IMPACT

Applications

- ▶ Knowledge being created will lead to interventions to encourage more secondary students to postpone or forego driving
- ▶ Policy



Thank you for your attention!



Mobility Health, Weiss & Ward 2012

Questions?

