

Philanthropy New Zealand

Tōpūtanga Tuku Aroha o Aotearoa

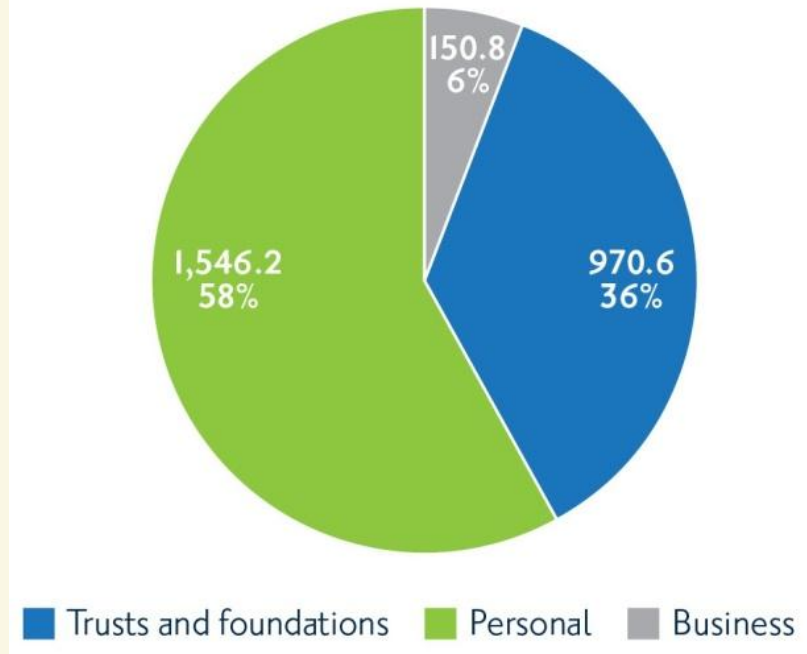


Key results

BERL estimated total philanthropic funding:

- of \$2.67 billion during 2011.
- is likely to lie in the range \$2.43-\$3.34 billion.
- equates to 1.35% of NZ's GDP (i.e. national income).

FIGURE 1 - TOTAL GIVING BY SOURCE (\$m, %)

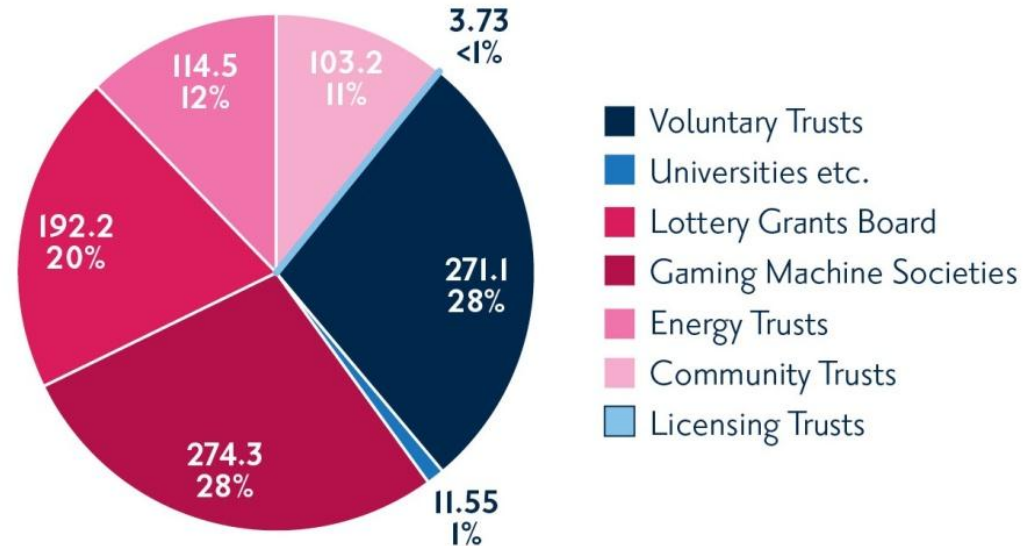


Key results - trusts

Trusts and foundations funded just over a third (36%, \$970.6M) of total estimated giving.

- Statutory trusts provided almost three quarters of this funding (\$688M).
- Voluntary trusts contributed over one quarter (\$282.6M).

FIGURE 6 - GIVING BY TRUST TYPES (\$m, %)



Philanthropy New Zealand

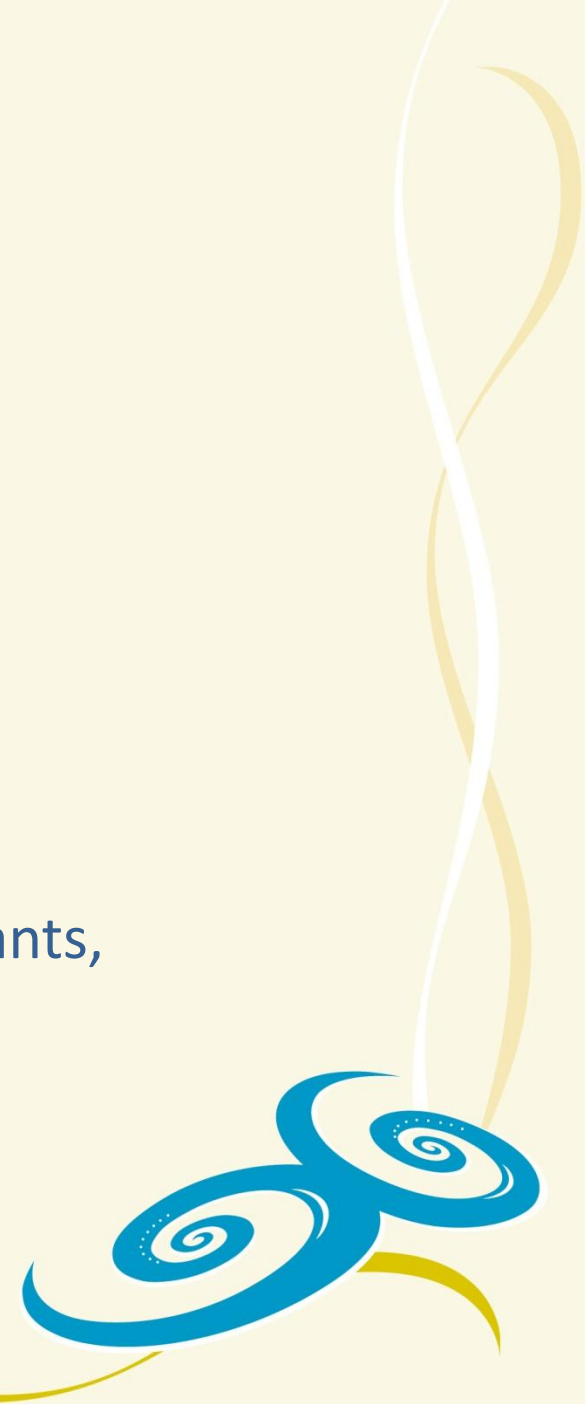
Tōpūtanga Tuku Aroha o Aotearoa

making a difference
learning
growing
partners
evaluate
money
generosity
support
growth
capacity
convene
sharing
social investment
opportunities
seedling
legacy
successful initiatives
communities
connect
innovative
start young
encourage
passion
change
effective
giving
collaboration
tools
legendary



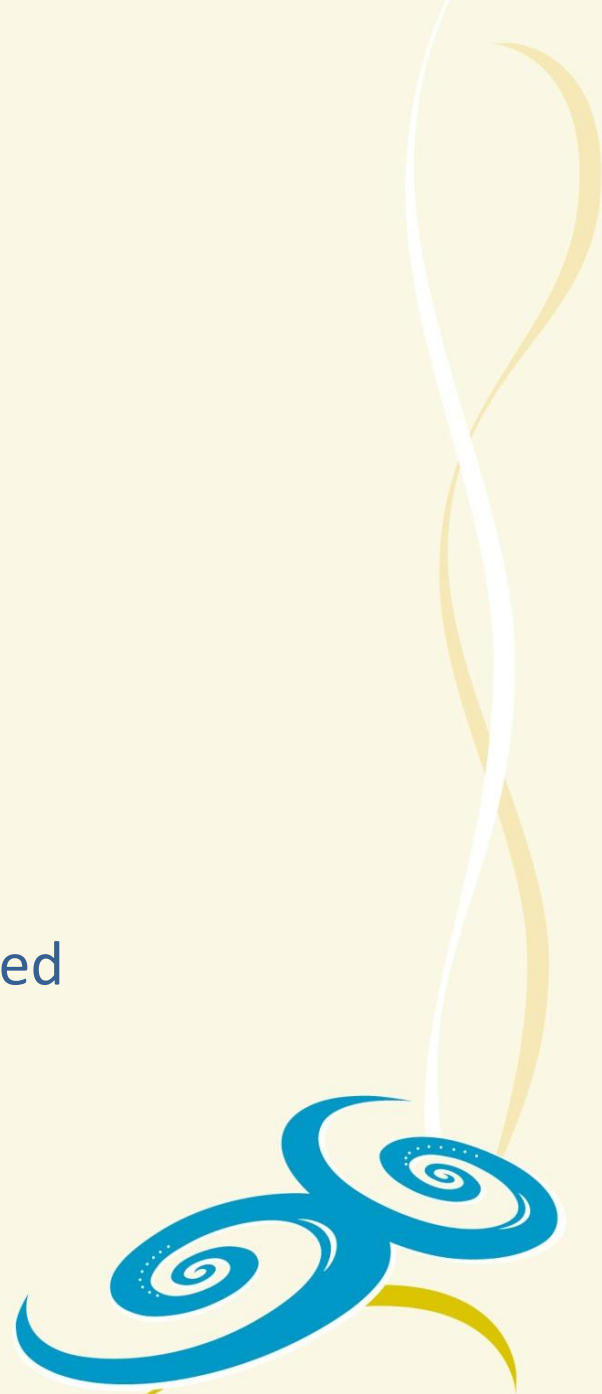
Types of funding

- Multi-year grants, longer-term funding
- Significant funding
- Funding a few well
- Early stage funding
- Untagged, unrestricted funding
- Targeted funding rather than scatter gun
- Investing in skilled people (staff, consultants, researchers, evaluators, experts)
- Open to considering riskier projects



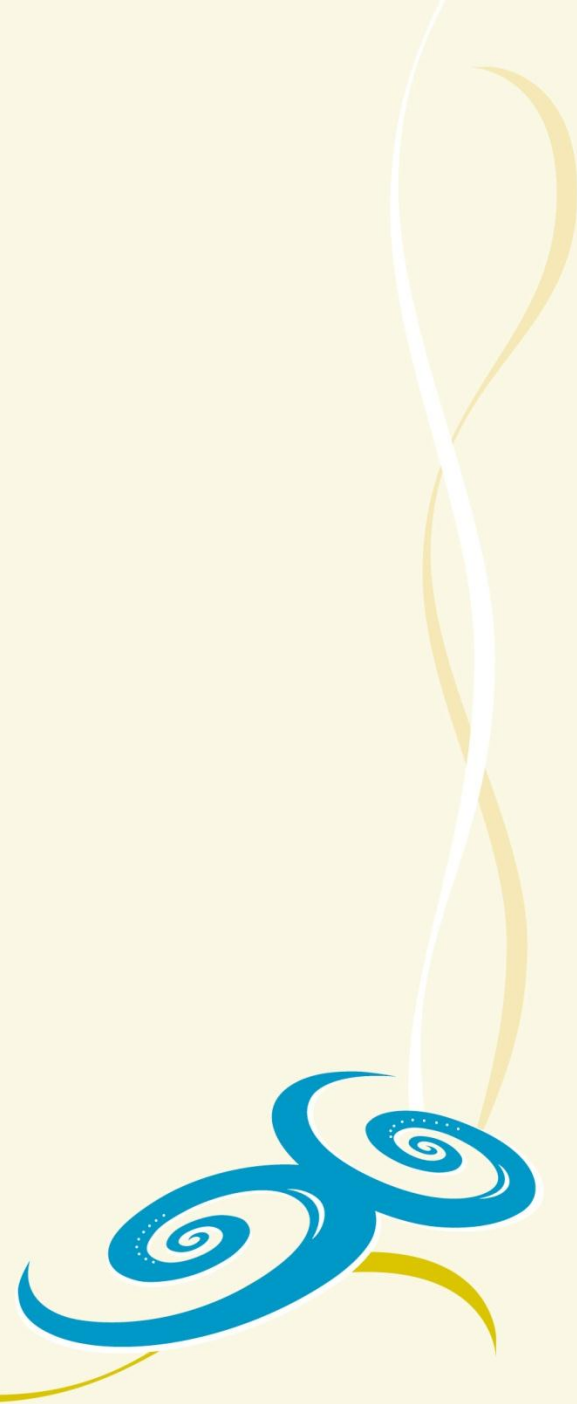
Relationships

- Developing a relationship between funder and recipient, often past the grant's life (a high-engagement approach)
- Building and operating on trust
- Working closely with recipients
- Being a good listener and responding to identified needs
- Culturally appropriate processes
- Shoulder tapping – inviting known or trusted groups to apply



Building capacity

- Funding professional development and training opportunities
- Funding capacity development partners (consultants) to work alongside recipients
- A multi-stage application process, with capacity building support at the second stage
- Trustees/board members mentoring or buddying recipients



Strengthening sectors

- Regular hui/events and training for recipients (past and present)
- Developing leadership, knowledge and skill in a sector
- Building relationships, networks and opportunities within and among sectors

Inspiring generosity and thoughtful grantmaking



Learning and evaluation focus

- Building evaluation into grants/funding
- Supporting self-evaluation
- Funding meta-evaluation (combining many sources of data) across a fund or programme
- Seeking better information on short to long-term impact



Emerging issues of interest

- social investment
- social enterprise
- innovation
- collaboration & partnership

Inspiring generosity and thoughtful grantmaking



Encouraging healthy outcomes for young New Zealanders





Philanthropy New Zealand

Tōpūtanga Tuku Aroha o Aotearoa



Vodafone
New Zealand
Foundation

World of Difference

- Pays salary and expenses of six to eight people to work for a youth focused NZ charity for 12 months
- Between 2002 and 2011, 51 recipients
- In 2010 we introduced World of Difference Gem
- 25 three month placements with 25 of our charity partners



Fellowship in Youth Health Leadership

- 2010 Inaugural year
- Leadership focus
- Invests in a promising mid-career researcher or practitioner
- Growing sector leadership
- Projects include exploring the unique health needs of rural Kiwi youth (in particular Maori) and researching international models of youth justice and developing a national working group



The Vodafone Foundation Canterbury Fund



- \$4 million fund in partnership with CEAT
- Multi year approach
- Focus on rebuild and building community resilience through small capital/ infrastructure projects and youth focused projects
- First round in 2011, nearly 300 applications, 48 recipients



ASB Community Trust

- ❑ Established in 1988 as a result of the sale of the Auckland Savings Bank to the Commonwealth Bank of Australia
- ❑ 15 Trustees are appointed to four-year terms by the Minister of Finance.
- ❑ \$30m annual grants budget
- ❑ Serve one third of NZ
- ❑ 1.4m people in Auckland and Northland



A FUNDING FRAMEWORK

COMMUNITY SUPPORT
GRANTS



KEY COMMUNITY
PARTNERS



CATALYSTS FOR
CHANGE



ICONIC & INNOVATIVE
PROJECTS



Maori and Pacific Educational Initiative

- \$20 million over 5-10 years
- Funding in high trust relationship
- With evaluation capability support
- Diverse initiative from start ups to innovation and social enterprise
- Results emerging with significant impact and social return on investment outcomes
- Leveraging support from other funders
- Scaling and transferring models



Youth Health and Development fund

- \$4 million over 4 years
- Capacity development and evaluation support
- High trust relationships
- Sector development
- Stories of significant change

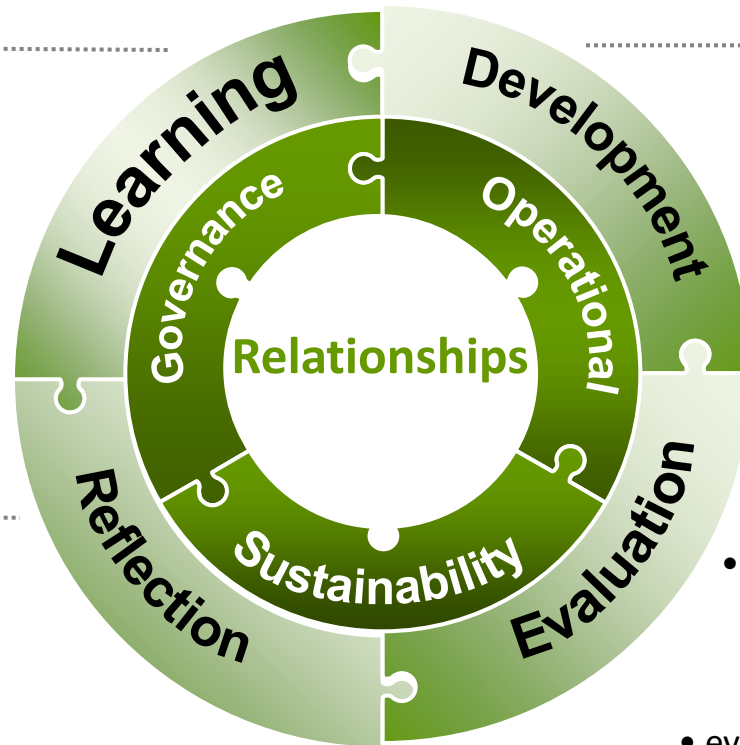
The High Engagement Model

Learning Outcomes

- supporting effective practice
- identifying learning to support action
- organisational growth and development

Reflective Practice

- ongoing developmental focus
- generating insights
- enhancing innovation
- informing future practice



Capacity Development

- support and advice
- coaching and mentoring
 - development tools
- service design and development
 - sector development

Self Evaluation

- support for self evaluation planning
 - participatory methods
 - logic model development
 - outcomes focus
- evaluation that supports development

Philanthropy New Zealand

Tōpūtanga Tuku Aroha o Aotearoa

Public Health and Philanthropy future possibilities:

- Understanding each other
 - Seeing the big picture
 - Collaboration
 - Potential for innovation, social enterprise and social change
-
- www.philanthropy.org.nz
 - www.vodafonefoundation.org.nz
 - www.carvingthefuture.com
 - vimeo.com/18490082

