

# Preparing for Windows Server 2003/R2 EOS

Dell Services & Solutions

Fast, flexible path from Windows Server migration to future-ready IT



Are you ready?



# The end of service for Windows Server 2003/R2

12 million production WS2003/R2 machines are in use today<sup>1</sup>

Optimistic Estimates

200 days  
server migration<sup>2</sup>

300+ days  
application  
migration<sup>2</sup>

end of service on  
**JULY 14<sup>th</sup>**  
**2015**

<sup>1</sup> Directions on Microsoft, Migrating from Windows Server 2003 and 2003 R2, February 24, 2014

<sup>2</sup> Microsoft TechEd, Windows Server 2003 End-of-Support Application Migration, June 2014



# What the end of service will mean to you

No

updates

No

compliance

37 critical updates released  
in 2013 for Windows Server  
2003/R2

Lack of PCI  
compliance could  
mean that Visa  
and MasterCard  
will no longer do  
business with your  
organization

DW

to act

ntinued  
rt for

ations

Microsoft TechEd, Windows Server 2003 End-of-Support Application Migration, June 2014



# What's your state of readiness?

**57%**

of Microsoft customers  
are still running  
WS2003/R2<sup>1</sup>

**53%**

are worried about  
**security compliance &  
vulnerability**  
management caused by  
WS2003/R2 EOS<sup>2</sup>

**23%**

are worried about  
**increases support costs  
and downtime** caused by  
WS2003/R2 EOS<sup>2</sup>

**12%**

Are worried about  
**regulatory compliance  
requirements** caused by  
WS2003/R2 EOS<sup>2</sup>

**94%**

94% of those running  
WS2003/R2 intend to  
migrate, but **only 24%**  
**are ready** to do so<sup>1</sup>

**24%**

**40%**

of those running  
WS2003/R2 are **not sure**  
**of the upgrade path**<sup>1</sup>

**\$200,000+ / year**

an **average for custom support costs** post-  
WS2003/R2 EOS in order to stay within specific  
industry regulations<sup>3</sup>

<sup>1</sup> CloudPost, Windows Server 2003 EOS, June 25, 2014

<sup>2</sup> AppZero, 2013 State of Readiness for Windows Server 2003 EOS Survey, December 2013

<sup>3</sup> Microsoft Technet blog, Windows Server 2003 End of Support is July 14, 2015 – Will you be ready to seize the opportunity, January 29, 2014



# What are your end of service options?



## 2. Isolate systems

Addresses issues of new security vulnerabilities but may reduce usability of system

## 4. Retire assets

Only for applications that have reached end of their useful life & can be retired without business impact

## 6. Automated OS migration

**Modernization** services & tools can accelerate migration, minimize risk & cost factors

## 1. Take no action

Only viable if replacing applications & servers with a new, from the ground-up architecture

## 3. Custom support contract

Provides (costly) bridge support, but not a permanent solution

## 5. Manual OS migration

Migration of a large pool of servers to newer OS can be long & resource-intensive

## 7. Migration to cloud or IaaS

**Transformative** scenarios can advance IT flexibility & evolution

# Modernize your server OS



# Why migrate to Windows Server 2012 R2?

“IDC believes that **organizations still using Windows Server 2003 should seriously consider making a move directly to Windows Server 2012**. If for no other reason, this move will extend the support at the other end of the life cycle by a minimum of four years. But given the strong list of new features and compatibility with private/hybrid cloud adoption, **Windows Server 2012 is a better deployment platform for the future.**”

Windows Server	2013	2014	2015	2016	2017	2018	2019	2020	2021	2022	2023	
2003 SP2	Extended support		14 July	Mainstream support								
2003 R2 SP2	Extended support		14 July	Mainstream support								
2008 SP2	Mainstream support		13 Jan	Extended support					14 Jan	Mainstream support		
2008 R2 SP2	Mainstream support		13 Jan	Extended support					14 Jan	Mainstream support		
2012	Mainstream support					9 Jan	Extended support				10 Jan	Mainstream support
2012 R2	15 Nov	Mainstream support				9 Jan	Extended support				10 Jan	Mainstream support



IDC  
“Worldwide Windows Server Operating Environments  
2013-2017 Forecast: Windows Server Drives into Virtualization”  
August 2013, #242789





# Top benefits of Windows Server 2012 R2

## Comprehensive cloud platform



- Complete, **built-in virtualization** platform
- **Enterprise-class scale and performance**, so you can virtualize every application
- Ability to achieve **business continuity** with inbox disaster recovery solutions
- Best-in-class **hybrid cloud** experience with a common set of technologies

## Cost savings and increased efficiencies



- **Reduced storage costs** with Storage Spaces and other storage enhancements
- **Increased server/administrator ratio** through Windows PowerShell and multimachine management
- **Increased uptime** with Cluster-Aware Updating and transparent failover

## Support for a modern work style



- **Virtual Desktop Infrastructure (VDI)**: simplified management and reduced cost of implementations
- **Optimized branch office wide area network (WAN)** bandwidth use
- Ability **for remote users to more securely access internal resources** without a virtual private network (VPN)

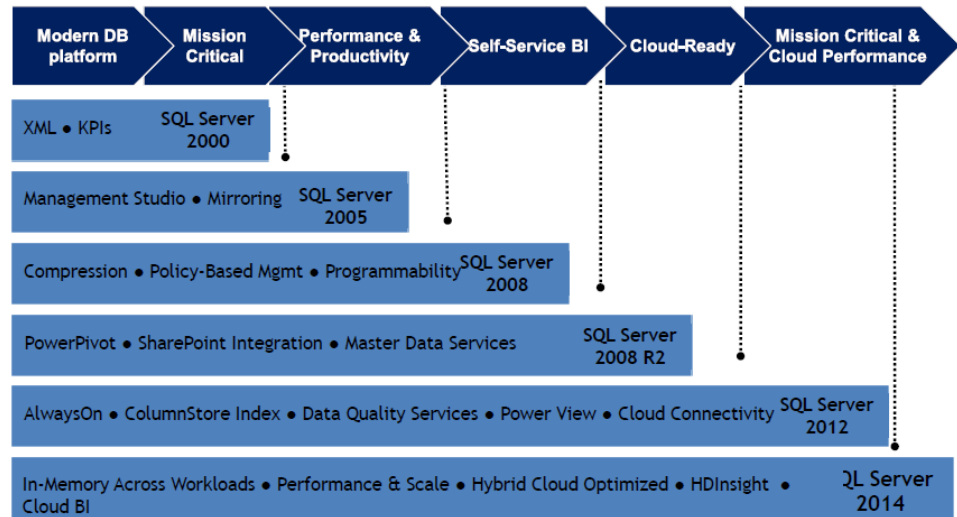
# Should you consider upgrading SQL Server 2005?

## End of service for Microsoft SQL 2005 is April 12, 2016

### Key SQL Server 2014 enhancements

- 7X faster performance enables real time updates
- In-memory built-in memory on average 10X faster
- Up to 640 logical processors, 6 vCPUs/VM, 1 TB memory/VM, 64 nodes/cluster
- Network virtualization
- Storage virtualization
- 100% availability during all online operations
- Easy on-ramp to hybrid cloud

### The evolution of the Microsoft data platform



# Should you consider a server refresh?

Windows Server 2012 R2 runs only on x64 processors

**“Organizations that refresh their software platforms more frequently than their hardware create a situation where the software platform is not optimized for the hardware platform** on which it is running. This can result in incompatibilities that require frequent patching, or perhaps an organization running multiple software versions in the same environment – another approach that will create a lot of maintenance and management problems.”<sup>1</sup>

- Extending server replacement from 3 to 5 years increases the **failure rate by 85%**<sup>1</sup>
- Hardware that is 5 years old has **21% more downtime** than equipment 3 years old<sup>1</sup>
- On average, extending server hardware replacements from 3 to 5 years will **double the cost of IT staff labor**<sup>1</sup>
- Servers greater than 4 years old contribute only 4% of total performance capabilities in the datacenter while **consuming 65% of overall energy**<sup>2</sup>

<sup>1</sup> IDC, Server Refresh Cycles: The Costs of Extending Life Cycles, August, 2012

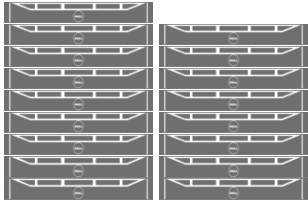
<sup>2</sup> Intel, Updating IT Infrastructure, 2013



# Benefits of a server refresh

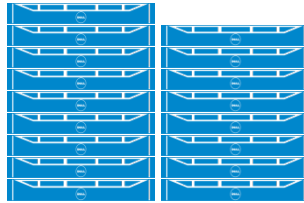
## Performance & efficiency

2003 (WS2003 + Intel 5300)



**17** Quad-core Intel Xeon processor 5300 series-based servers

2014 (WS2012 + Intel E5-2600 V2, "Ivy Bridge")



**1:1** Performance refresh

Up to **17x** the performance

**17** Twelve-core Intel Xeon processor E5-2600 V2 product family-based servers

**17:1** Efficiency refresh

**1** Twelve-core Intel Xeon processor E5-2600 V2 product family-based servers

Up to **96%** reduced annual energy costs

As fast as **3** month ROI

# What else should you consider when migrating?



**Is server virtualization a good option?**

Many organizations running WS2003 use only physical machines. Using Hyper-V, which is part of WS2012 R2, to run virtual machines instead of physical machines offers more efficiency, reliability & scalability.



**How can you ensure application compatibility?**

Ensure third-party applications are certified to work on WS2012 R2. Test all critical in-house applications to make sure they work properly in new environment.



**How can you improve security & compliance?**

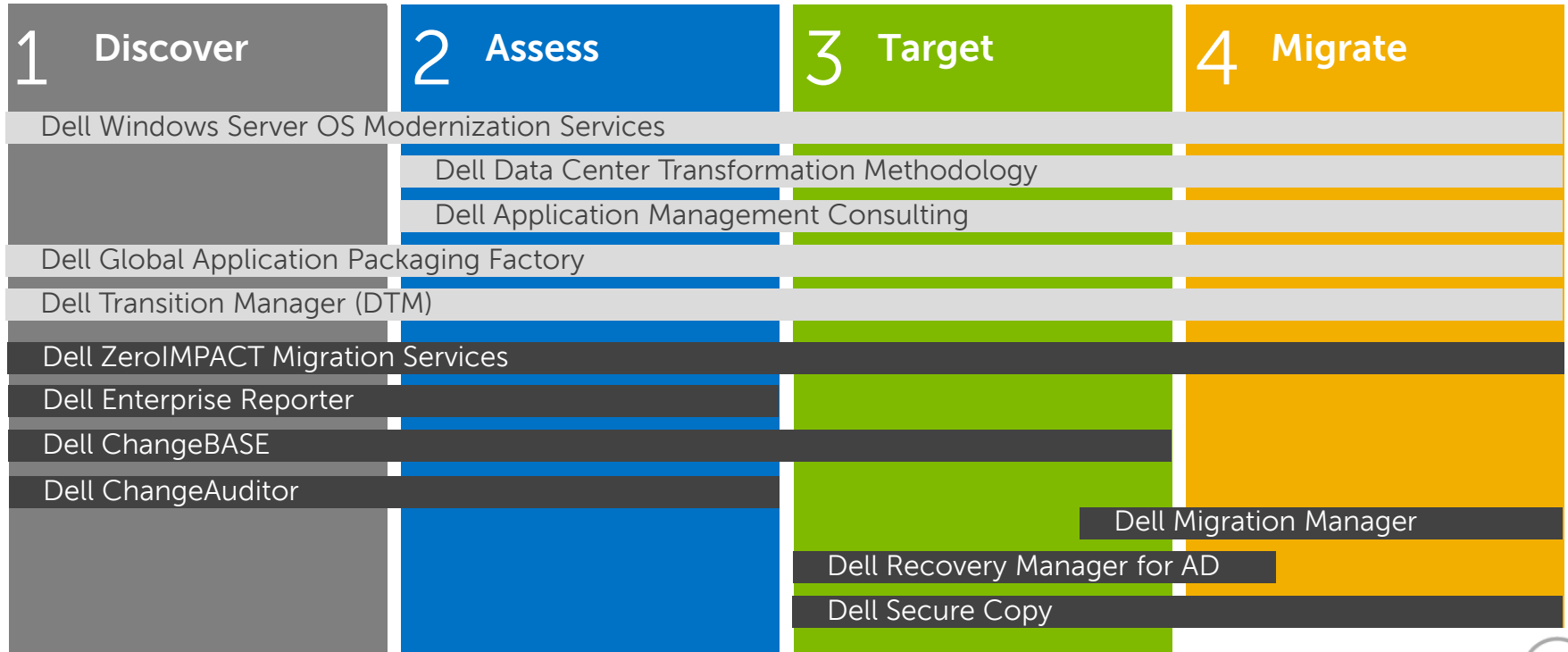
To ensure a secure & compliant WS2012 R2 environment, assess & clean up your current environment. In particular, make sure your Active Directory reflects each employee's current job function & inactive identities are deleted.



**Do you need Active Directory restructuring?**

Moving to WS2012 R2 is an opportunity to restructure your Active Directory to better meet your current and future needs. Consider how many domains you now need, how many forests.

The process you need to follow has not changed in a long time....the methodologies, frameworks & tools have



Do more than  
modernize...

...transform



# Should you consider the cloud or IaaS?

“For firms that are actively looking to transform their existing environment to a cloud-based model, the migration of Windows Server 2003-based applications represents an **opportunity to move a significant block of legacy functionality to the cloud.**”

Gigaom Research  
Balancing cost and Risk:  
Migrating from Windows Server 2003 to the cloud  
November 15, 2013



Over

**80%** of new apps will be distributed or deployed on clouds in **2012**.



**70%**

of businesses are either using or investigating **cloud computing solutions**





# Migration is an opportunity to transform your IT

Legacy apps  
& platforms

fortran COBOL



Microsoft

- Mainframe
- UNIX
- x86 server
- Storage
- Network
- Client

Outdated  
infrastructure

  
**Flexible  
transition  
services**

Assess, plan,  
design or  
implement



**Business-class  
connected  
devices**

Secure, connected, managed  
heterogeneous endpoints



**Intelligent  
converged  
infrastructure**

Software-defined architecture



**Seamless  
cloud  
delivery**

An extension of the data  
center (SaaS, PaaS, IaaS)



**Greater insights from data**

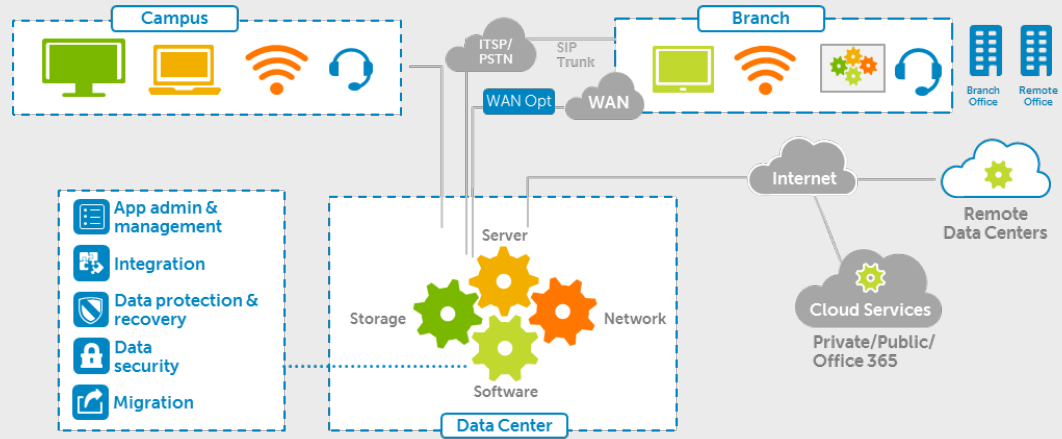
Data-driven decision making



**Connected security**

Secure from the device to the cloud

# An opportunity to transform your business



## Compute from your scale to hyperscale

Harness energy-efficient blade, rack, converged systems for any workload, at any scale

## Modernize network infrastructure

Improve infrastructure performance, lower costs with the power of 10GbE networking end-to-end

## Establish new storage economics

Experience new storage economics and innovations including Flash at the price of Disk

## Redefine office IT

Bring order to chaos with an integrated, quiet solution for remote/branch offices

End-to-end solutions for the enterprise from data center to desktop to mobile device



There is **no single migration path** that suits all organizations and workloads.

Dell provides unique services and tools to help you rank and classify your Windows migration pathway based on critical needs.

Dell's end-to-end capabilities addresses Windows migration **from the data center to the end point.**



# Accelerate value with Dell's end-to-end capabilities

## The right people, processes & technology

### Expert **Services**

World-class solutions architects, automated tools, unique intellectual property, reference architectures & best of breed partners.

### Innovative **Software**

Scalable & integrated technologies & best practices to efficiently & effectively address each phase of migration planning & execution.

### Breakthrough **Hardware**

Industry-leading, future-ready IT solutions, as well as foundational building blocks, designed to maximize value & choice.

### Flexible **Financing**

Wealth of leasing & financing solutions designed to help make upgrades affordable & help you find opportunities in your IT capital expenditure, operating expenditures & cash flow decisions.

### Pragmatic **Training**

Award-winning suite of education services taught by top-trained faculty & staff, delivered through multiple methods, built around your migration needs & designed to speed maximum return on investment.

# Choose the path that best fits your needs

## Transform with Dell

Dell plans & implements migration for you, with world-class people, tools, IP

## Modernize with Dell

You leverage Dell unique scalable & integrated solutions & tools

## Do it yourself

You leverage Dell industry-leading foundational building blocks

Dell Consultancy Services

Dell Software tools

Microsoft software

Dell  
Hardware

Dell  
Support

Dell  
Deploy

Dell ED  
Services

Dell  
Asset  
Recovery

Dell  
Financial  
Services

# No matter the path you choose, **Dell can help**

## Accelerate migration & value, mitigate risks & costs

IT infrastructure that seamlessly spans on-premises and cloud, while reducing costs, simplifying management and improving data protection.

### Cost savings

Align your infrastructure to the business, reduce capital expense & maximize investment through consolidation, virtualization & cloud infrastructure

### Simplicity

Streamline your infrastructure & simplify IT management for more control & make it more agile with integration with Microsoft System Center

### Peace of mind

Ensure availability & business continuity, rely on enterprise-grade security on-premises & in the cloud



# Dell and Microsoft



# Partner with the leader



30+ year partnership

“Original” Microsoft Certified Gold Partner

#1 distributor of Microsoft software\*

#1 Microsoft OEM\*

21 Gold & 3 Silver competencies\*

Technology Adoption Programs (TAPs)

Dell has been a Microsoft Certified Gold Partner since 2003, the year the program began  
\* Microsoft Pinpoint as of July 29, 2014





# Leading edge solutions built on collaboration



## Joint Engineering

---

Joint engineering programs that produce unique intellectual property, including reference architectures and business ready configurations that are scalable from device to data center.

---



## End-to-end Solutions

---

End-to-end solutions across both the Microsoft product portfolio and Ell's solution and product portfolios.

---

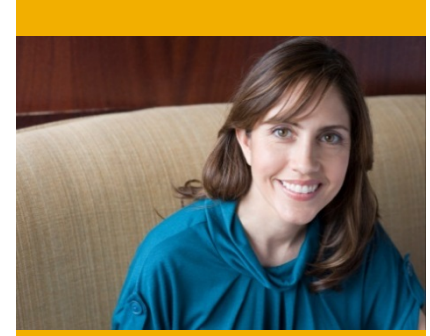


## Collaborative Sales Teams

---

Coordinate, incented and cross-trained sales teams with a deep understanding of the benefits of alliance solutions.

---



## Worldwide Expert Delivery

---

Worldwide expert delivery teams that use a flexible approach and established delivery processes to meet specific customer needs.

---

# Dell's Microsoft solutions portfolio



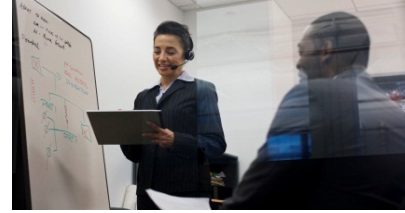
## Unified Communications & Collaboration

- Unified Communications
- DVS Enterprise for Windows Server
- SharePoint Solutions
- Microsoft Exchange



## Data Center Infrastructure

- Windows Server 2012 R2
- Microsoft System Center
- Data Center Virtualization
- Cloud Computing
- Windows Server Management
- Windows Storage Spaces
- Windows 2003 EOS Migration



## Data Management & Storage

- SQL Server 2012 & 2014
- Unified Storage for SharePoint
- Analytical Platform System



## Client Computing

- Windows 8 Migration
- Microsoft Systems Configuration Center Manager
- Commercial Tablets
- Apps

## Power Microsoft's innovation with ours

Industry-leading innovations now available in Dell's server and client computing solutions enable you to take immediate advantage of ground-breaking advancements in Microsoft software solutions.

## We're ready when you are

Dell has the expertise to help you make informed decisions now and the solutions to streamline the management and evolution of your IT ecosystem.

# Dell's Microsoft Partner competencies



21 Gold competencies

3 Silver competencies

- Gold Application Development
- Gold Application Lifecycle Management
- Gold Business Intelligence
- Gold Collaboration and Content
- Gold Communications
- Gold Customer Relationship Management
- Gold Data Platform
- Gold Devices and Deployment
- Gold Distributor
- Gold Hosting
- Gold Identity and Access
- Gold Intelligent Systems
- Gold Learning
- Gold Management and Virtualization
- Gold Messaging
- Gold Midmarket Solution Provider
- Gold OEM
- Gold Server Platform
- Gold Small Business
- Gold Software Asset Management
- Gold Volume Licensing
- Silver Application Integration
- Silver Enterprise Resource Planning
- Silver Project and Portfolio Management

Microsoft Pinpoint as of July 29, 2014



# Dell's Microsoft Partner of the Year awards

So far, in....

# 2014

- Enterprise Partner Group Partner of the Year (East, West, Central)
- U.S. Windows Deployment Partner of the Year
- Worldwide Windows 8 App Developer of the Year
- Public Sector Partner of the Year
- U.S. Revenue Partner of the Year
- Worldwide Enterprise Partner Group Microsoft Sales Achievement Award (finalist)

# 2013

- Enterprise Partner Group Partner of the Year (East, West, Central)
- Worldwide OEM Multi-national Account Partner of the Year (finalist)
- U.S. Windows Partner of the Year
- U.S. Windows Deployment Partner of the Year
- Worldwide Windows 8 App Developer Partner of the Year (finalist)
- Worldwide Office/SharePoint App Developer of the Year
- Worldwide Enterprise Partner Group Microsoft Sales Achievement Award, SI
- Inner Circle for Microsoft Dynamics (recipient)
- President's Cloud for Microsoft Dynamics (recipient)
- YouthSpark Citizenship Partner of the Year





# Next steps



# Accelerate with Dell's end-to-end capabilities

The right people, processes & technology

Expert  
**Services**

Innovative  
**Software**

Breakthrough  
**Hardware**

Flexible  
**Financing**

Pragmatic  
**Training**

# Visit the Service Clinic in the expo today!

Leverage Dell's full end-to-end solution approach: requirements, analysis, disposition, readiness, migration

## Bottoms up approach



## Top-down approach

Start with WS 2003 End of Service Workshop

Start with both approaches and match them up when full dependency analysis is complete

Conduct technology POC's to prove the approach; build a plan for full migration

# Thank you

[Dell.com/2003migration](https://Dell.com/2003migration)

