

Dell Fluid Cache for SAN

Koen Diependale

Customer Solutions Engineer BeLux

Kris Van Haverbeke

Enterprise Marketing BeLux

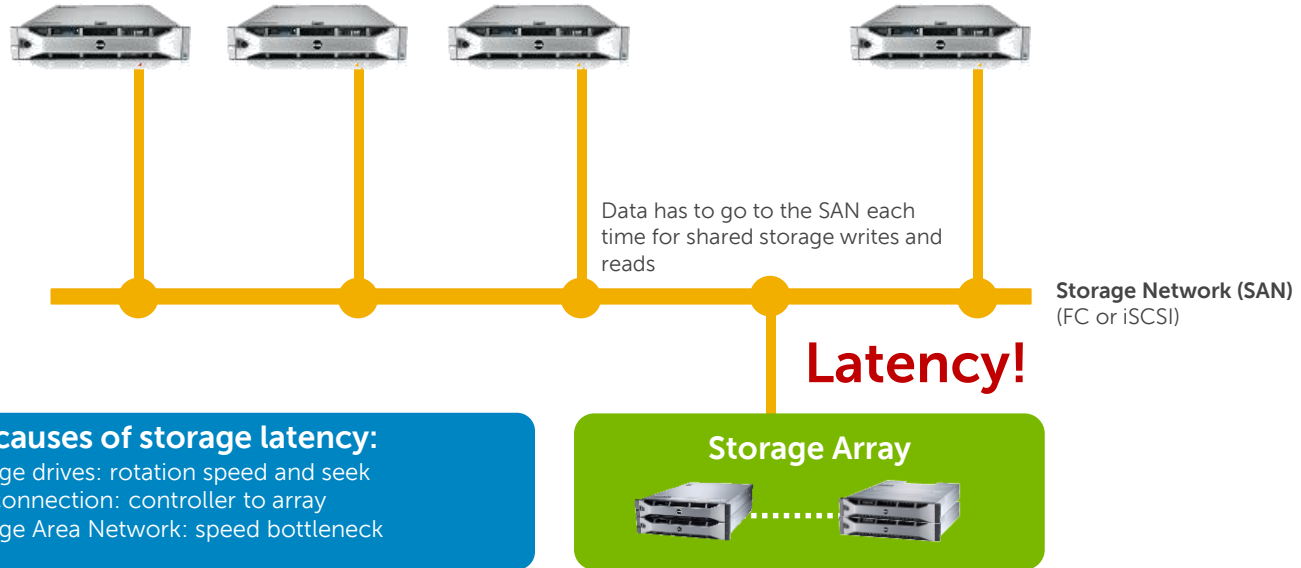


What's the challenge?



Issues facing applications

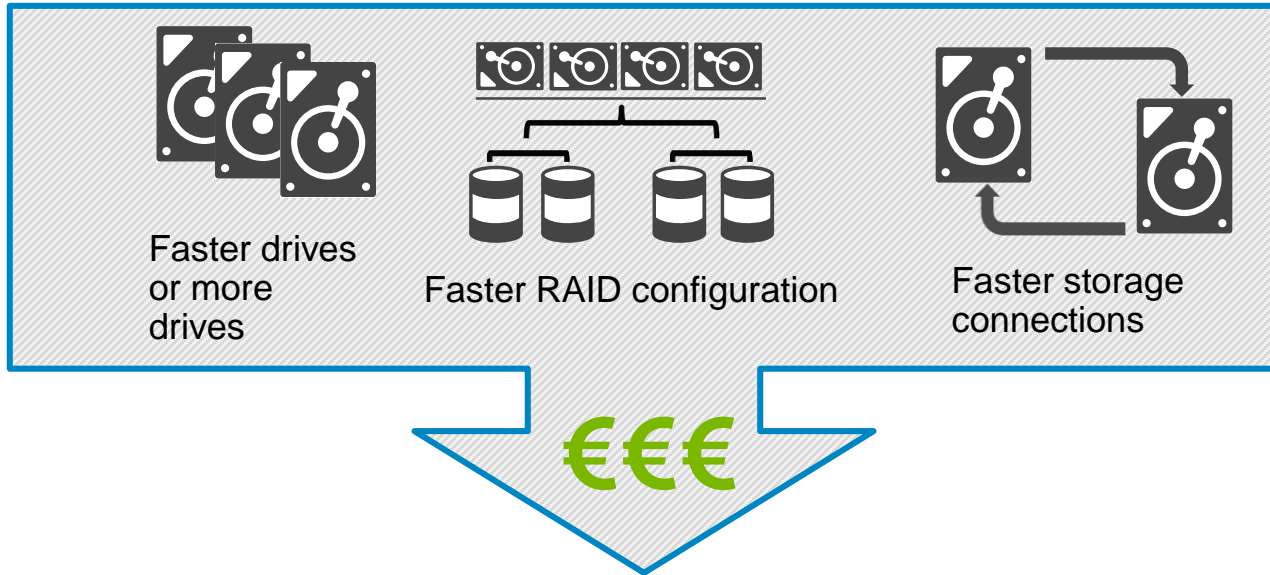
The latency issue



Latency of data traversed between compute and storage impacts IOPS and transaction speed
Result: Application performance slowdown

The storage I/O bottleneck

Methods to boost storage I/O performance:



How do you manage this within a budget?

You can do more of the same ...
more spend for more
performance...



Or ... you could think outside
the box ...

Dell Fluid Cache for SAN

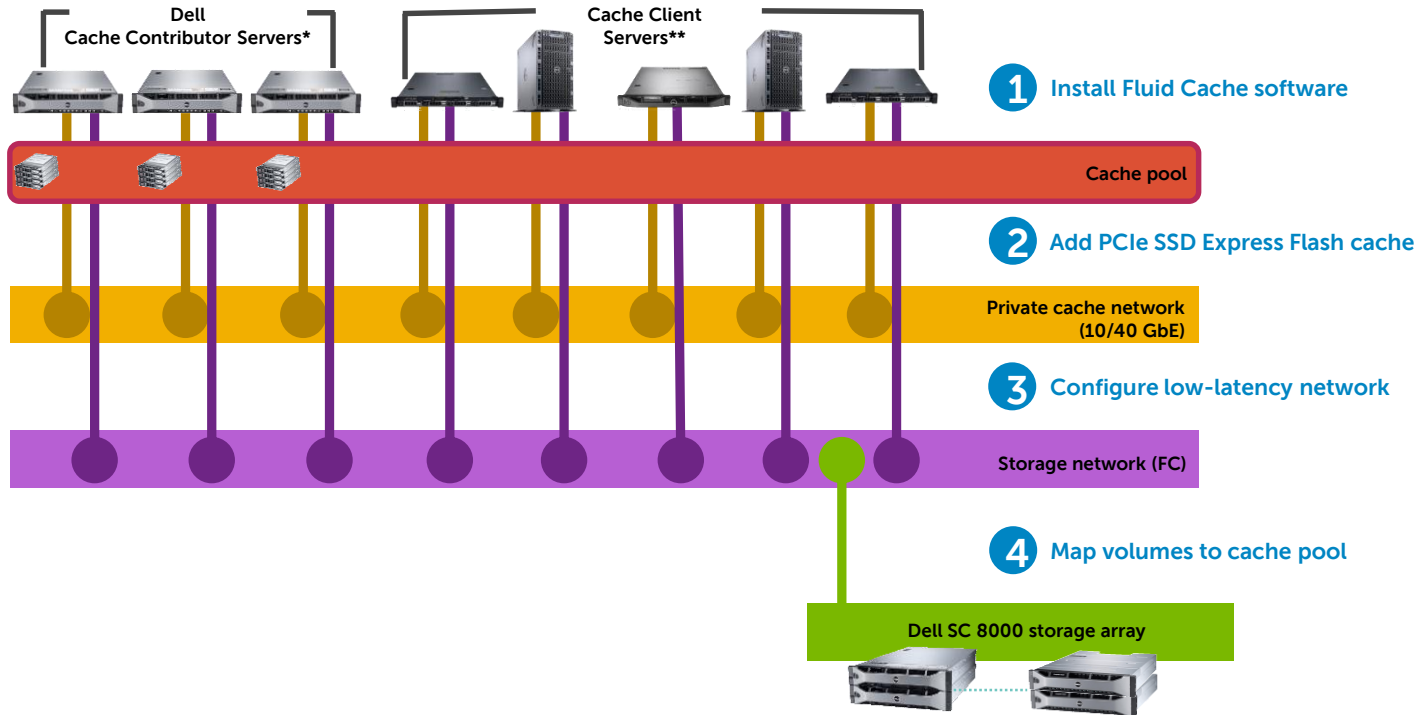


Architecture



Bring data closer to compute

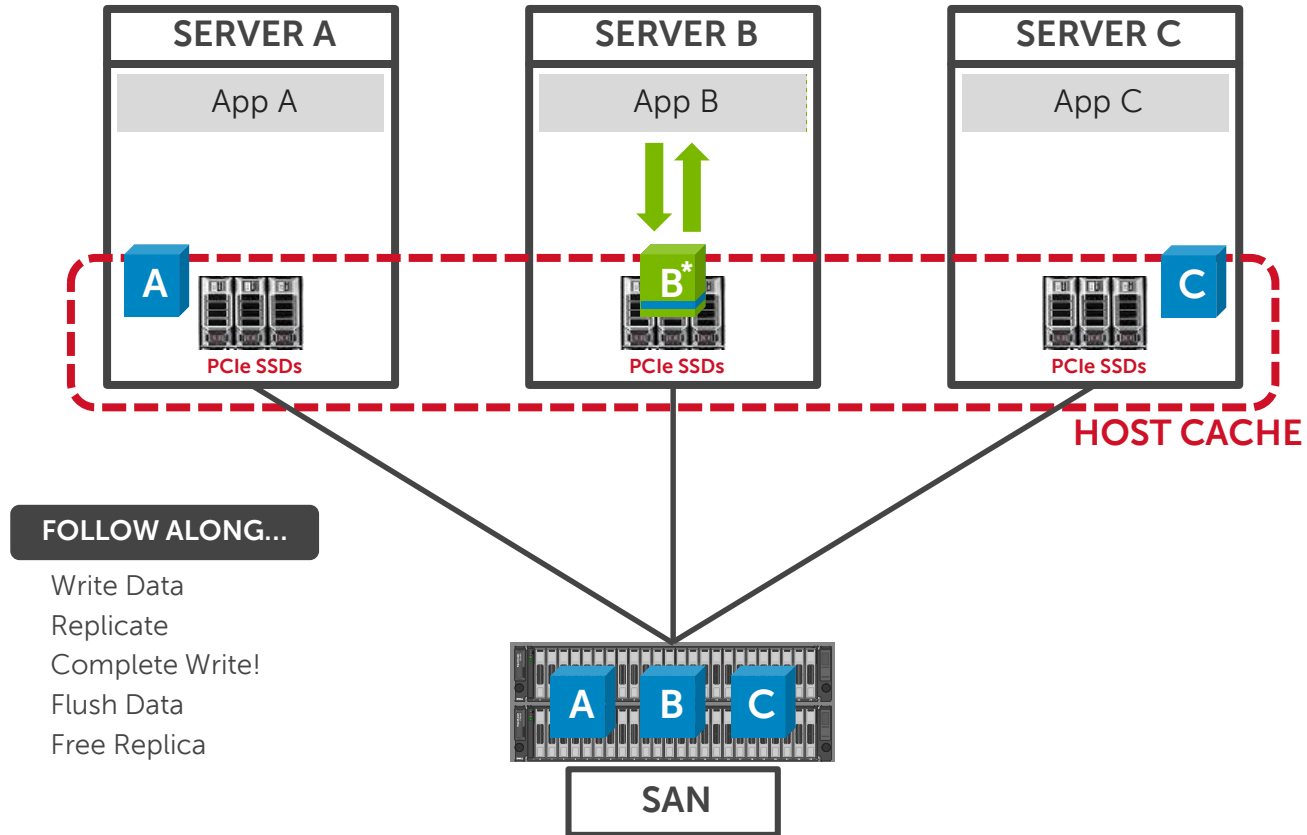
Dell Fluid Cache software + Dell Compellent = Accelerated application response



*A minimum of 3 validated Dell servers are required to establish the cache pool.

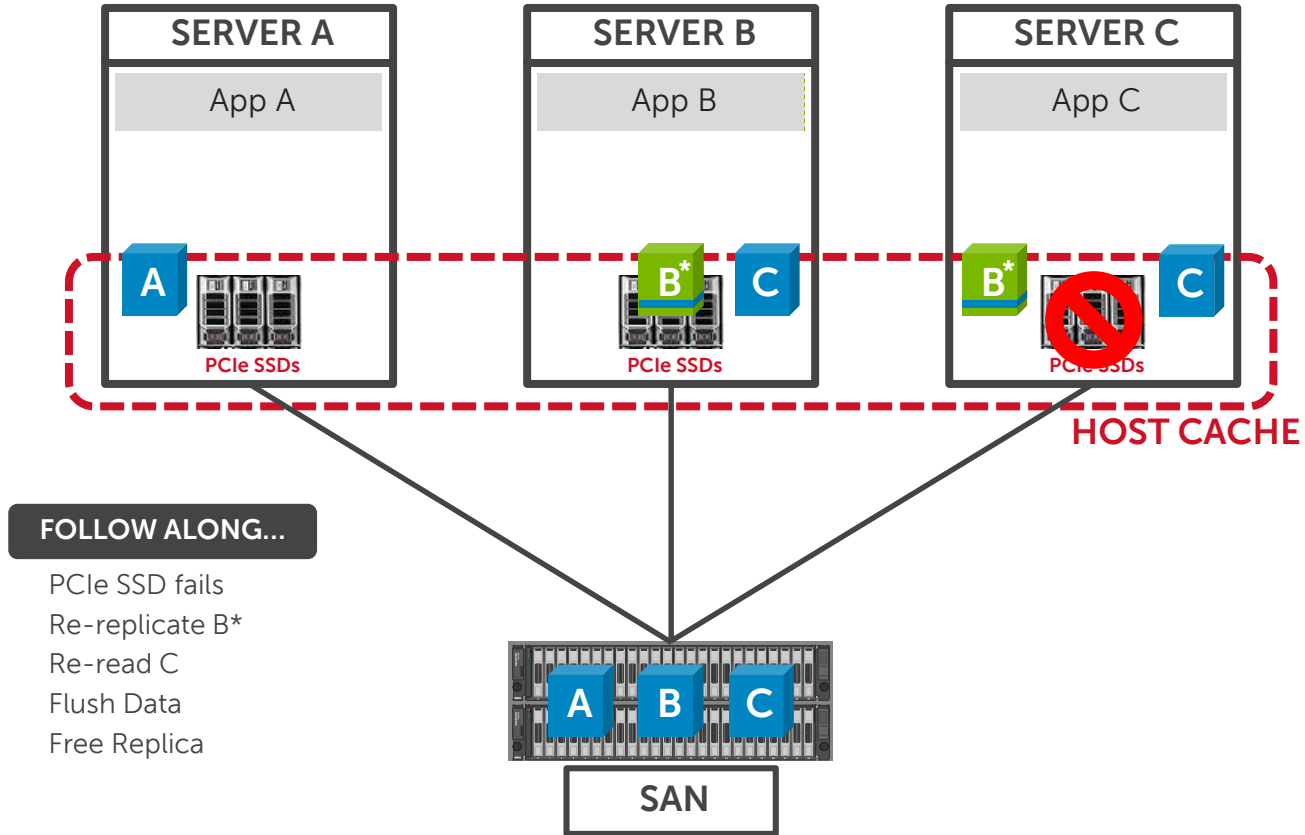
**Cache client servers can be a mix of Dell and other servers that run a supported OS and have an available PCIe slot.

Write Cache with High Availability



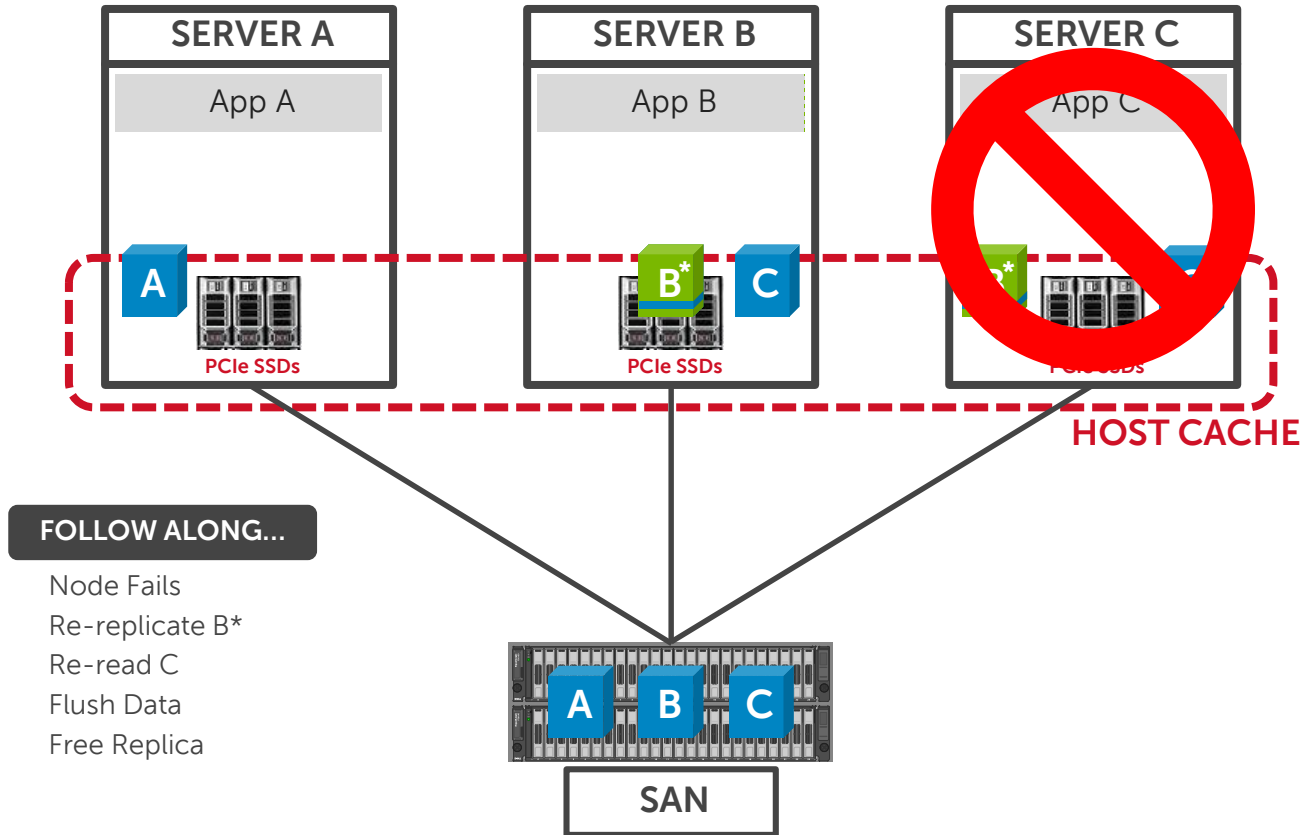
Write Cache with High Availability

PCIe SSD failure



Write Cache with High Availability

Entire Node Failure



Fully integrated with the SC8000

- management
- monitoring
- snapshotting



Thank you



The power to do more