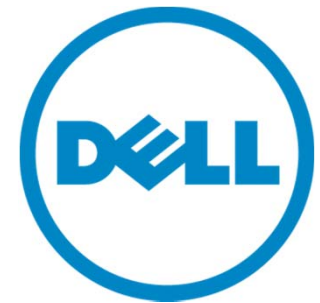

Next generation Dell Precision
Mainstream/Rack Workstations
Customer Presentation



Dell Precision Workstations

Powering mission critical work.



Dell - Critical Handling - Confidential

Agenda

- Review of current generation mainstream Dell Precision workstations
- Why Dell? Industry leading innovation & design
- NEW! Transition to the next-gen fixed & rack Dell Precision workstations
- Product Overviews



The New Dell



Dell Precision is the **most comprehensive** workstation solutions portfolio

Products + Software + Accessories + Services



Entry mobile

Dell Precision M2800



Thin & light

Dell Precision
M3800



Powerful, single & dual core mobile

Dell Precision
M4800 & M6800



Entry & small form factor, to full power, fully expandable towers

Dell Precision T1700,
T3610, T5610, T7610



1:1

Rack workstation

Dell Precision
R7610



1 to many

Dell Wyse
Datacenter for
virtualized
workstations

Dell Precision Optimizer

| Intel CAS-W

| Reliable Memory Technology (RMT)



Dell Precision is focused on workstation innovation

Award-winning 4k2k



Best of CES

#1 Monitor Brand Worldwide*

Leader in rack based workstations



Refreshed our entire lineup in 2013

Highest share growth in Q4

NEW! M3800
1st real thin & light
"World's thinnest, lightest mobile workstation"



Launched Dell Precision Optimizer & CAS-W

Behind Emmy & Academy award winning productions



Smart Design for the way you work



Dell Precision mainstream tower workstations

- Goal: Enable greater productivity by designing the highest performing workstation with leading innovation for easy user access, manageability and convenience
- Straightforward and practical design; No superficial features
- Award winning best-in-class chassis design
- Example: handle on tower for easy carrying



Dell Smart Design: Front Accessible Hard Drives



Dell Precision T7610

Front accessible hard drives on the T7610

- Up to four 3.5" or eight 2.5"
- Easy access to remove and replace hard drives
- Quick release hard drives
- Lockable front bezel for added security

• Dell - Critical Handling - Confidential
Dell Solutions Tour 2014



Dell Innovation: Best-in-Class Chassis Design

- Tool-free, externally accessible power supply
- Improved serviceability gets you back up and running quickly

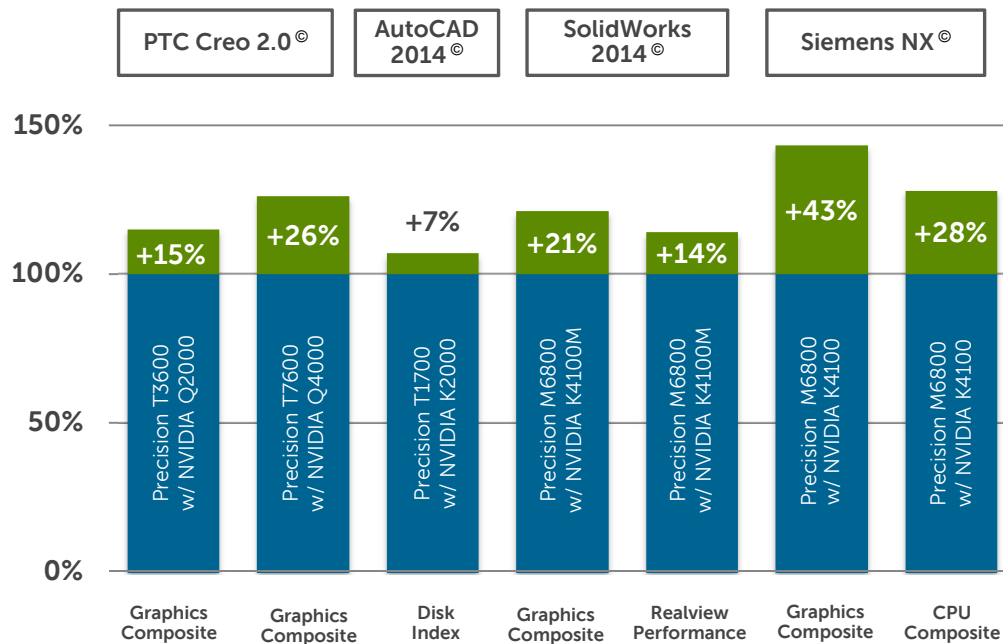


Dell Precision T3610 / T5610



Dell Precision T7610

Dell Precision Optimizer enhances **application productivity** with **dynamic system tuning**



Dell Precision Optimizer

- Included with your Dell Precision workstation
- Performance profiles automatically adjust Intel® Hyper-Threading, # of CPU cores, as well as graphics, and power settings
- Custom-built profiles for your application's workload
- Works in the background
- Provides system utilization tracking and reporting
- Enables updates of drivers, software and firmware

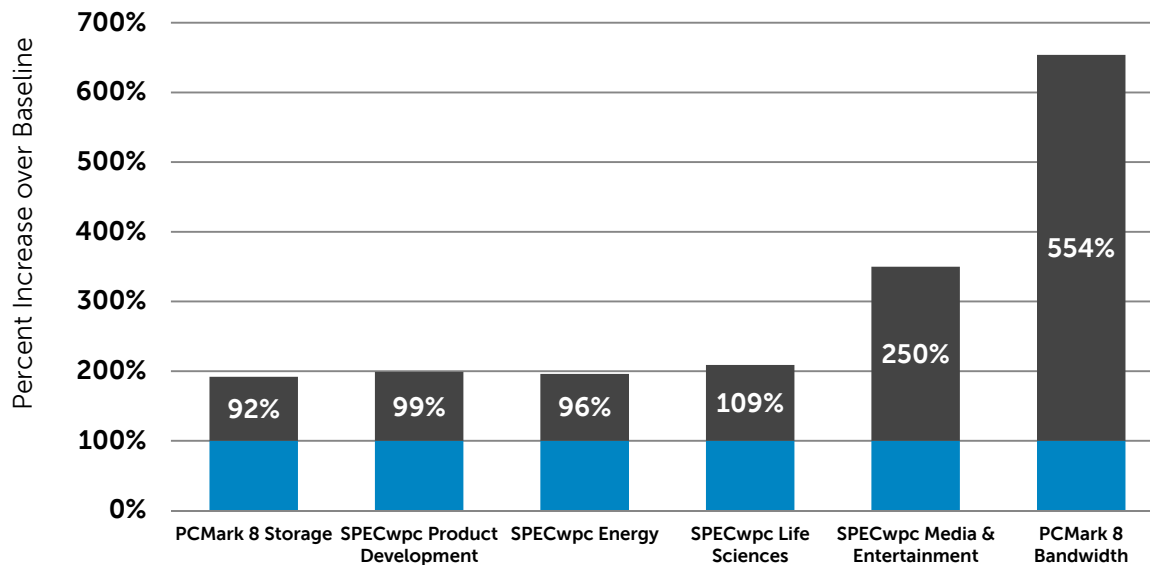
* Test results are a weighted geometric mean of optimized configuration samples, compared to factory-installed default settings.

** Benchmarks are industry standard applications using SPEC committee and other industry standard benchmarks.



Eliminate the bottleneck you never knew you had: Intel CAS-W

Increased Storage Performance with CAS-W

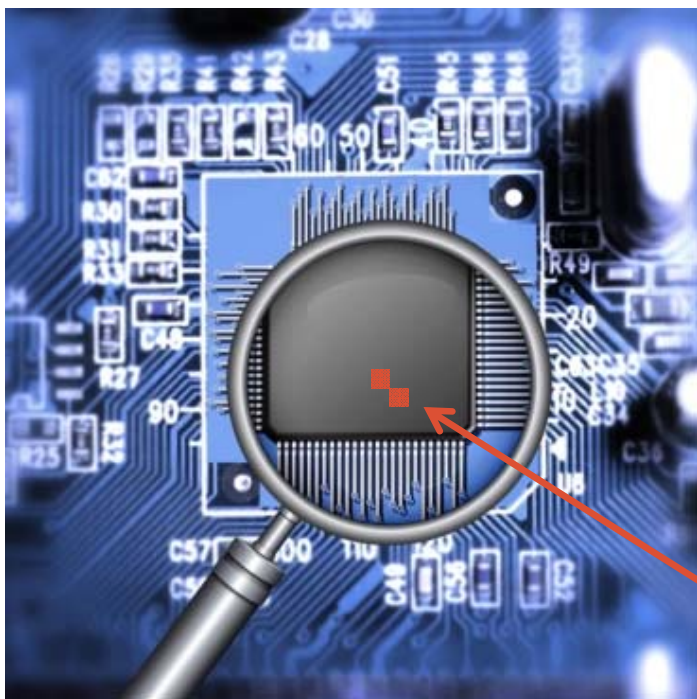


- **Exclusive** Dell Software
- Cache acceleration software for workstations
- Gives large capacity, rotating disk drive high performance up to & exceeding, SSD

*T3610 with Xeon E5-1650 v2, 64GB memory (4x16GB), 500GB 7200RPM SATAIII boot drive, 128GB cache drive, CAS-W build 10301-2017



Maximize uptime- Dell Reliable Memory Technology



- Exclusive, Dell patented technology
- Responds to memory errors preventing reoccurrences
- Extends memory life
- Notifies you of memory errors before the DIMM is unusable
- Reduces down time
- Makes troubleshooting easier

With Dell RMT – The bad memory bit is mapped out, so the DIMM can still be used

Without Dell RMT – Bad memory is still present, leaving your system vulnerable to blue screens or requiring resources to replace

Supported on the T7610, T5610 and T3610 and R7610 with ECC memory



Portfolio

Current-gen mainstream fixed Precision workstations



T3610

Outstanding mainstream performance, innovative chassis

- E5-1600 V2 Ivy Bridge CPU
- Single socket up to 130W & 6 Cores
- Up to 300W professional graphics
- Entry NON-ECC DDR3 memory SKUs
- DDR3 RDIMM memory up to 128GB
- 6Gb/s HW Raid Controller Card
- Intel vPro
- ISV Certifications



T5610

More processing power in a compact innovative chassis

- E5-2600 V2 Ivy Bridge CPU
- Up to Dual¹ 150W CPUs & 10 cores
- Up to 300W professional graphics
- DDR3 RDIMM memory up to 128GB
- 6Gb/s HW Raid Controller Card
- Intel vPro
- ISV Certifications

¹ only differentiator Vs A3 is dual CPU (=2X memory bandwidth) & is required for max memory



T7610

Ultimate Workstation performance & scalability

- E5-2600 V2 Ivy Bridge CPU
- Up to Dual 150W CPUs & 12 cores
- Up to 675W Pro graphics
- DDR3 RDIMM memory up to 512GB
- LSI 6Gb/s SWRAID Controller down
- 6Gb/s HW Raid Controller Card
- Intel vPro
- ISV Certifications
- Highly expandable



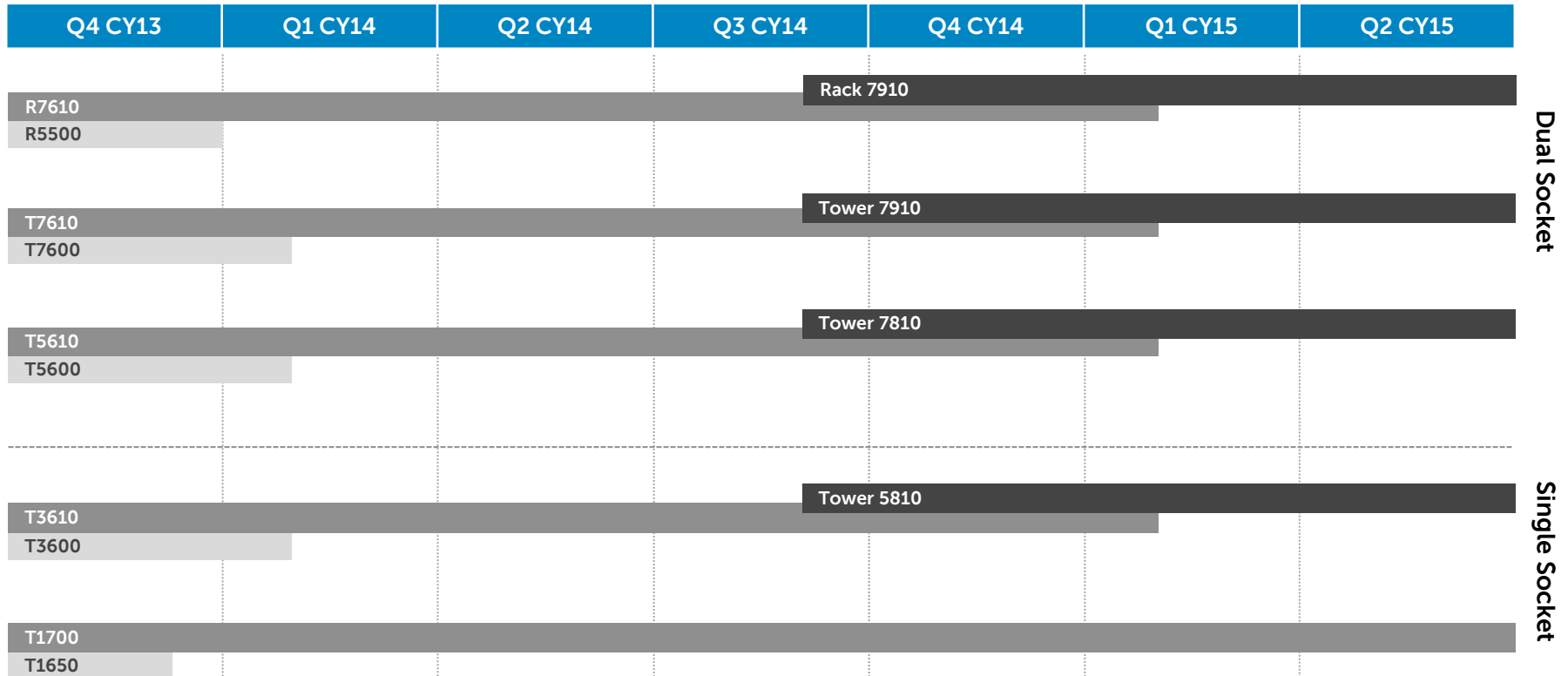
R7610

Ultimate Workstation performance, scalability & security in a 2U rack form factor

- E5-2600 V2 Ivy Bridge CPU
- Up to Dual 150W CPUs & 12 cores
- Up to 675W Professional graphics
- DDR3 RDIMM memory up to 512GB
- LSI 6Gb/s SWRAID Controller down
- 6Gb/s HW Raid Controller Card Intel vPro
- Best in class remote access solutions
- Ideal for OEMs & workstation virtualization with Citrix



Dell Fixed Precision Portfolio – June 2014



RTS 9/4, SKUs-on 9/9, Intel Launch 9/8

Dell - Critical Handling - Confidential

Dell Solutions Tour 2014



NOTE: Precision naming conventions are changing

<u>Old name</u>	→	<u>New Name</u>
• T3610	➔	Dell Precision Tower 5810
• T5610	➔	Dell Precision Tower 7810
• T7610	➔	Dell Precision Tower 7910
• R7610	➔	Dell Precision Rack 7910



New Workstations - Key Features

- **Performance**

- Latest Intel Microarchitecture with Haswell Xeon E5 Processors - expanded choices
- 2133Mhz DDR4 Memory up to 1TB on T7910,Rack*
- Next gen graphics refresh
- 6.0Gb/s Intel AHCI SATA cont. T58,T78,R79
- 12Gb/s PCIe controller card options (400GB SAS SSD)
- Improved acoustic performance
- Thunderbolt 2 PCIe option card (on towers)
- Expanded PCIe SSD Storage 700GB, 1.4GB
- V2.0 Dell Precision Optimizer
- Efficiency with EPA 80-Plus Gold
- Color Calibration Solution

- **Dependability**

- Dell RMT (Reliable Memory Technology)
- Reliable Components and Specs
- Extensive ISV Application certifications
- Dual redundant PSU (Rack)

- **Manageability**

iDRAC enabled (Rack) - vPro for Towers

- **Smart Design**

- Easy Access serviceable chassis
- Handles for transportability
- Maximum Scalability T7910
- Datacenter Full Features (Rack)
- Flexible Remote Access and **Virtualized solutions (Rack)**

- **Configurability**

- Solution options to meet diverse needs **Precision Managed Ecosystem**
- OS Options that customers want
- Ubuntu 12.04 Factory installed WW on towers (replaces FreeDOS)
- Citrix and VMware support on Rack
- Catalog Options delivering better value and faster delivery - on Towers
- Custom Build To Order

* Post RTS



Next-gen mainstream fixed Precision workstations



Tower 5810

Outstanding mainstream performance, innovative chassis

- E5-1600V3 Haswell & future Broadwell EP
- Up to One 160W CPU
- Up to 300W professional graphics
- DDR4 RDIMM memory up to 256GB*
- Integrated 6.0Gb/s SATA controller,
- Optional 12Gb/s PCIe Raid Controller Cards
- Intel vPro
- ISV Certifications



Tower 7810

More processing power in a compact innovative chassis

- E5-2600 V3 Haswell & future Broadwell EP
- Up to Dual 160W CPUs
- Up to 300W professional graphics
- DDR4 RDIMM memory up to 256GB*
- Integrated 6.0Gb/s SATA controller,
- Optional 12Gb/s PCIe Raid Controller Cards
- Intel vPro
- ISV Certifications



Tower 7910

Ultimate Workstation performance & scalability

- E5-2600 V3 Haswell & future Broadwell EP
- Up to Dual 160W CPUs
- Up to 675W professional graphics
- DDR4 RDIMM memory up to 1TB*
- Integrated 12Gb/s SW Raid controller
- Optional 12Gb/s PCIe HW Raid Controller Card
- Intel vPro
- ISV Certifications
- Highly expandable



Rack 7910

Ultimate Workstation performance, scalability & security in a 2U rack form factor

- E5-2600 V3 Haswell & future Broadwell EP
- Up to Dual 160W CPUs
- Up to 675W professional graphics
- DDR4 RDIMM memory up to 1TB*
- Integrated 6.0Gb/s SATA controller,
- Optional 12Gb/s Mini-PERC RAID Controller cards
- Dell iDRAC Datacenter Manageability
- Best in class remote access solutions
- Ideal for workstation virtualization



Portfolio

Precision Graphics



T5810

- Nvidia NVS 310, 315
- Nvidia K420 (Oct 2015)
- AMD W2100, W4100
- Nvidia K620
- AMD W5100, W7100
- Nvidia K2200, K4200
- Nvidia K5200, K6000

Up to 2 cards



T7810

- Nvidia NVS 310, 315
- Nvidia K420 (Oct 2015)
- AMD W2100, W4100
- Nvidia K620
- AMD W5100, W7100
- Nvidia K2200, K4200
- Nvidia K5200, K6000
- Nvidia Tesla K20C

Up to 2 cards



T7910

- Nvidia NVS 310, 315
- Nvidia K420 (Oct 2015)
- AMD W2100, W4100
- Nvidia K620
- AMD W5100, W7100
- Nvidia K2200, K4200
- Nvidia K5200, K6000
- Nvidia Tesla K20C
- Intel Xeon Phi 3120A (S&P)

Up to 4 cards



R7910

- Nvidia NVS 310,
- Nvidia K620
- AMD W5100,
- Nvidia K2200, K4200
- Nvidia K5200, K6000
- Nvidia Tesla K20C
- Nvidia K2A
- Intel Xeon Phi 3120A (S&P)

Up to 4 cards



Thank You!

