

'Keeping families and communities well'  
in early childhood centres



Kay Walshaw  
Health Promoter  
Population Health  
Waikato DHB  
07 878 6704

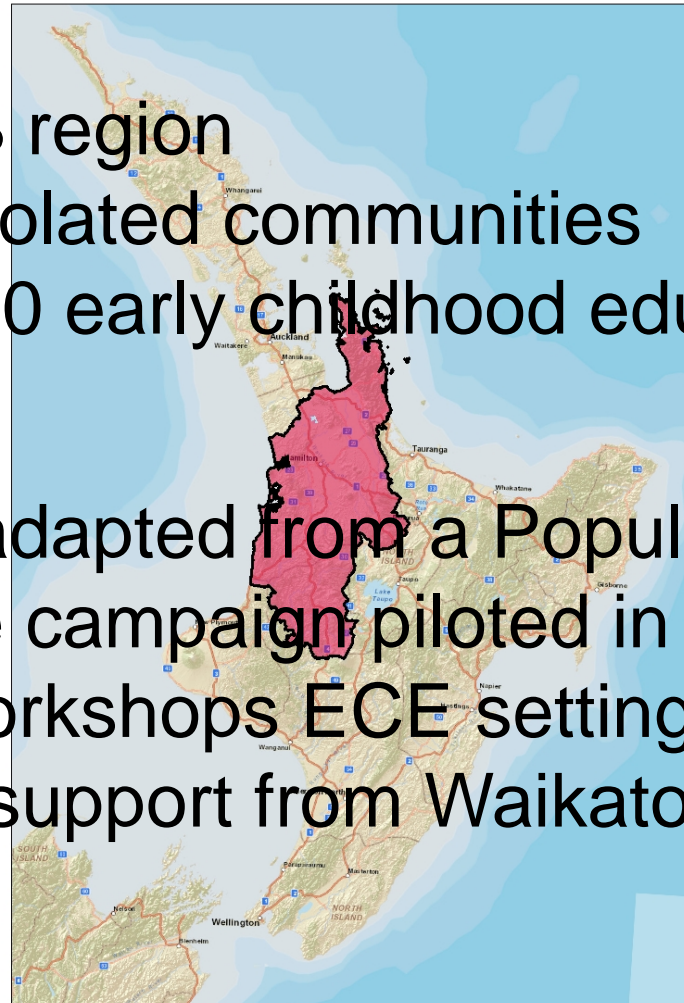
just like the All Blacks, it's a team  
effort

Stephanie Shepherd  
Health Protection Officer  
Population Health  
Waikato DHB  
07 838 2569

# Kick off



- Waikato DHB region
  - rural, isolated communities
  - over 400 early childhood education settings (ECEs)
- Project was adapted from a Population Health hand hygiene campaign piloted in Taumarunui
  - from workshops ECE settings asked for further support from Waikato DHB



# New game



- Population Health formed a new team – the ‘keeping families and communities well’ team
- Collaborative approach – representatives from different geographical and professional areas



HEALTH WAIKATO  
CARING FOR YOU  
Weikato District Health Board  
POPULATION HEALTH

keeping families  
and communities well

Communicable Disease Education



# The goal for the new team



Project aim:

- Up to date, clear and consistent public health messages
- Contributing to Ministry of Health - health targets
  - Cardio-vascular disease (including Rheumatic Fever & Oral health)
  - Immunisation (including Managing Childhood Illnesses)

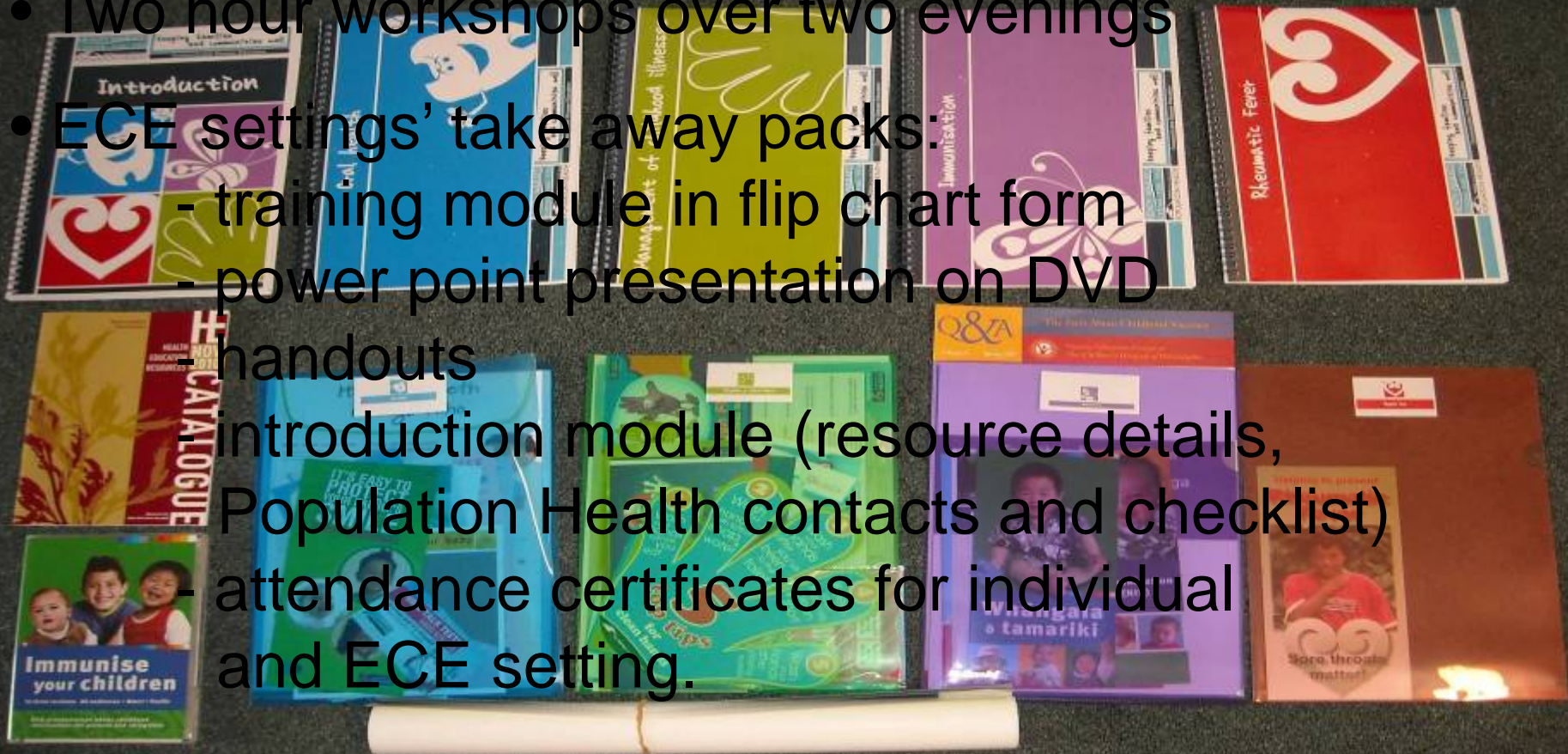




# Training basics



- Two hour workshops over two evenings
- ECE settings' take away packs:
  - training module in flip chart form
  - power point presentation on DVD
  - handouts
  - introduction module (resource details, Population Health contacts and checklist)
  - attendance certificates for individual and ECE setting.



HEALTH WAIKATO  
CARING FOR YOU



POPULATION HEALTH

keeping families  
and communities well

Communicable Disease Education

# Match officials



- Health protection officers
- Health promoters
- Public health nurses
- Public health medicine specialists
- Immunisation co-ordinator



- Dental therapists
- Tamariki ora providers
- Pacific providers
- Iwi providers
- Plunket
- Local ECE teachers
- Ministry of Education

# Insider information



- ECE qualified and registered teacher on the team
- Links to other ECE setting professionals – staff whose children attend ECE settings, staff involvement with centres
- Delivery techniques

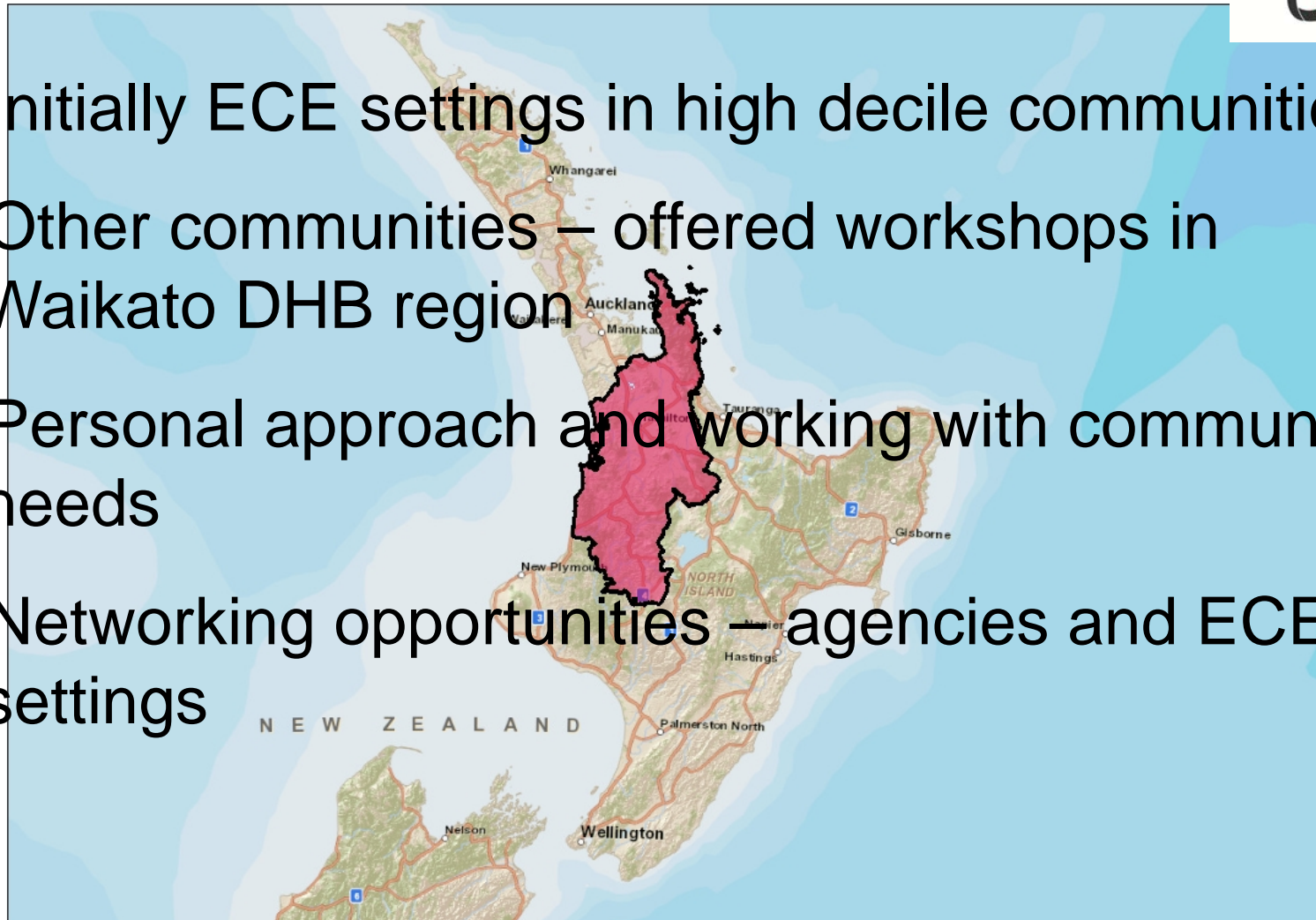




# The crowd



- Initially ECE settings in high decile communities
- Other communities – offered workshops in Waikato DHB region
- Personal approach and working with community needs
- Networking opportunities – agencies and ECE settings



HEALTH WAIKATO  
CARING FOR YOU



POPULATION HEALTH

keeping families  
and communities well

Communicable Disease Education



# First half team talk

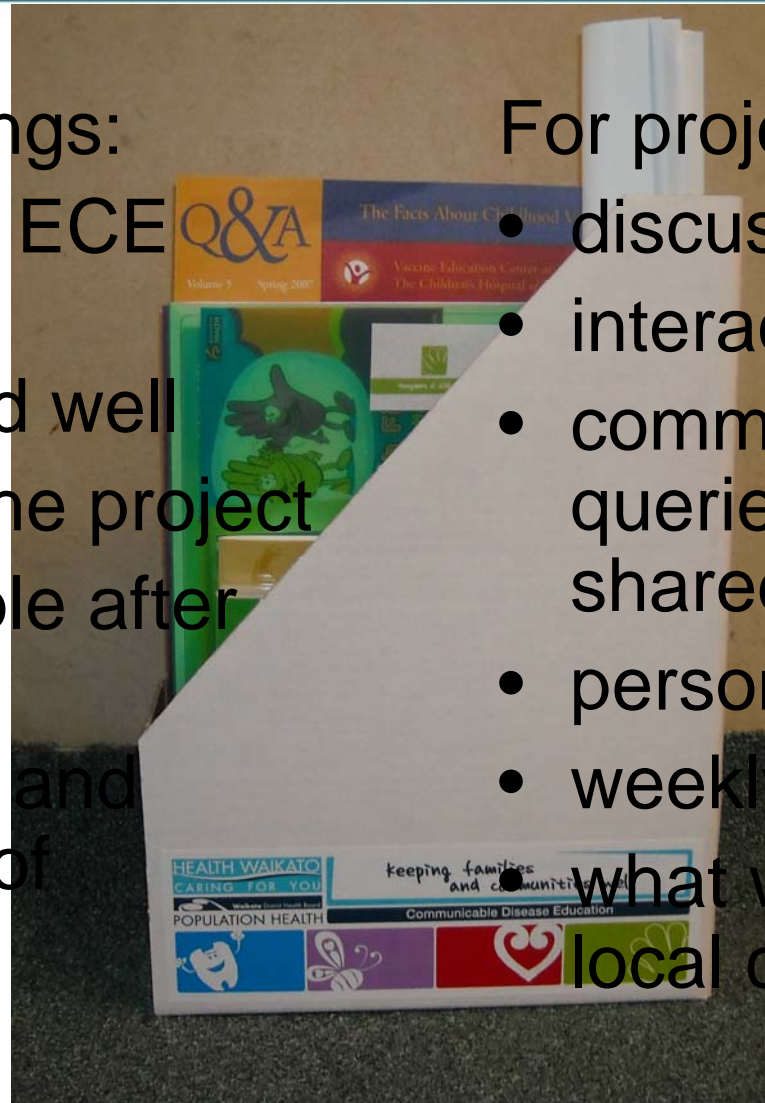


For ECE settings:

- good mix of ECE settings
- what worked well
- promoting the project
- staff available after training
- enthusiasm and knowledge of presenters

For project team:

- discuss pilot outcomes
- interaction of groups
- common queries/questions shared
- personal approach
- weekly updates
- what worked well – local connections

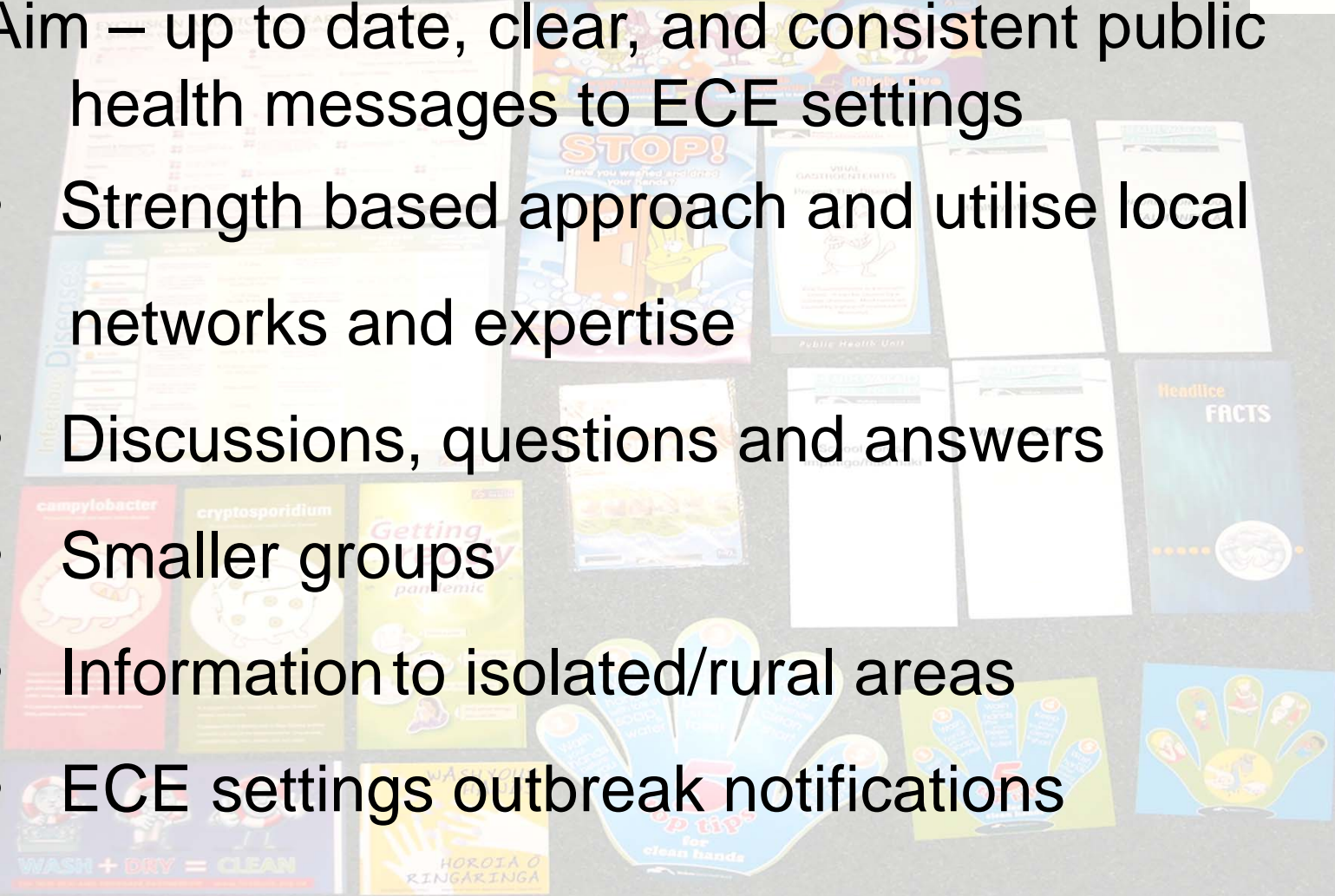


# Captain's speech

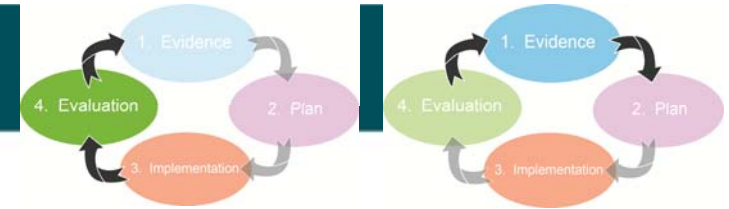


Aim – up to date, clear, and consistent public health messages to ECE settings

- Strength based approach and utilise local networks and expertise
- Discussions, questions and answers
- Smaller groups
- Information to isolated/rural areas
- ECE settings outbreak notifications



# Game of two halves



- New modules based on workshop evaluation requests
- Continue personal approach for invitations and workshops
- Where to from here?
- Cultural appropriateness and relevance





# Full credit



- Teamwork
  - the project team themselves
  - local community experts
- A refresher/support for centres already supporting wellbeing



Photo acknowledgements

Slide 1 -

[http://media.rbi.com.au/LW\\_Media\\_Library/Images/footy-kick-off.jpg](http://media.rbi.com.au/LW_Media_Library/Images/footy-kick-off.jpg)