



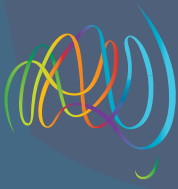
PARKS & LEISURE
AUSTRALIA
(NSW/ACT)

RESILIENCE: ADAPT & THRIVE



2017
NSW/ACT
CONFERENCE
GUIDE

18-19 MAY 2017
THE SEBEL HARBOURSIDE
KIAMA



Les Munn
President
PLA NSW/ACT Region

Welcome to the Parks & Leisure Australia 2017 NSW/ACT Conference. Following on from last year's extremely successful event in the Hunter Valley, the Conference Organising Committee has worked extremely hard to prepare another fantastic opportunity for our members to enjoy a great learning and networking experience.

Our Principle Conference Sponsor is GLG and I thank them for giving us their full support in delivering this conference for our members.

I would also like to take this opportunity to thank our other main sponsors, the Office of Sport, Lawn Solutions Australia, Syngenta, Andreasens Green, Kompan, Tennis Australia and Kiama Municipal Council. Without the support of these organisations, this type of event would not be possible.

The theme for this year is "Resilience: Adapt & Thrive". We feel that this is extremely relevant these days in NSW, in an environment of amalgamations and huge changes in how we do business.

One of the highlights of the event will be the prestigious "Awards of Excellence" dinner to be held at The Pavilion. This year, PLA received a record number of entries across the 11 categories and the acknowledgement of those excelling in their chosen fields will make for an exciting night not to be missed.

The quality and range of sessions along the two streams of "Active Recreation" and "Planning and Place" will provide attendees with a broad range of insightful topics. There will also be a must see panel discussion on 'The Evolving Nature of Active Recreation - Diversification and Participation' as well as ample opportunities for networking and getting to better know your industry colleagues.

So once again, welcome and please enjoy our Conference. I look forward to catching up with as many of you as possible at the Conference

Les Munn

SPONSORS:

PRINCIPAL SPONSOR



GOLD CONFERENCE SPONSOR



EVENT PARTNER



REGIONAL SPONSORS





WEDNESDAY 17 MAY

6pm - 8pm

Welcome cocktail function
The Quarry Room, Sebel Harbourside Kiama

THURSDAY 18 MAY - CONFERENCE DAY 1

8.30am - 5.00pm

The Sebel Harbourside Kiama

6.30pm - 11.30pm

Awards of Excellence dinner - The Pavilion Kiama

FRIDAY 19 MAY - CONFERENCE DAY 2

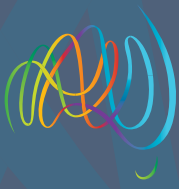
8.30am - 12pm

The Sebel Harbourside Kiama

1.30am - 4pm

Technical Tours
Departure from The Sebel Harbourside Kiama





The Sebel Harbourside Kiama Park provides 80 beautifully detailed, fully self-contained guest rooms over 3 levels; consisting of king guest rooms, one bedroom apartments, and two bedroom apartments and accessible guest rooms. All with pleasant outlooks and a choice of ocean, garden and town views.

ROOM	NO. OF ROOMS	DISCOUNT RATE
Single accommodation rooms	80	\$180 per night
One and two bedroom apartments	5 apartments	\$200.00 per night

CHECK-IN/CHECK-OUT

Check in time is 2pm. For guests arriving prior to this time the hotel will do all possible to provide earlier access to rooms. Check out time is 11am.

BREAKFAST

The above room rates include breakfast in The Quarry room.

RESERVATIONS

To book, contact the Reservations Department directly and state that you are booking as part of the PLA Conference.

ON SITE FACILITIES

- 24 hour reception
- Blue Diamond Bar & Bistro
- Conference & Events Centre
- One Fitness Gym
- Undercover parking
- Free WIFI
- Bike hire

POST CONFERENCE ACCOMMODATION RATES

For those delegates wishing to extend their stay, the Sebel Kiama Harbourside has a special offer of the same accommodation rates to stay on Friday 19th May and an additional \$50 on top of the above listing room rates for Saturday 20 May 2017 single share.

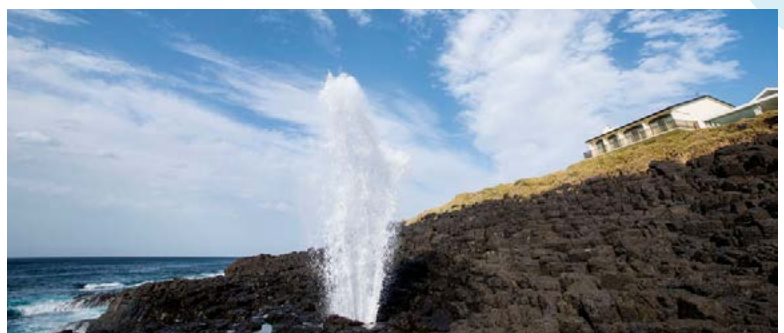
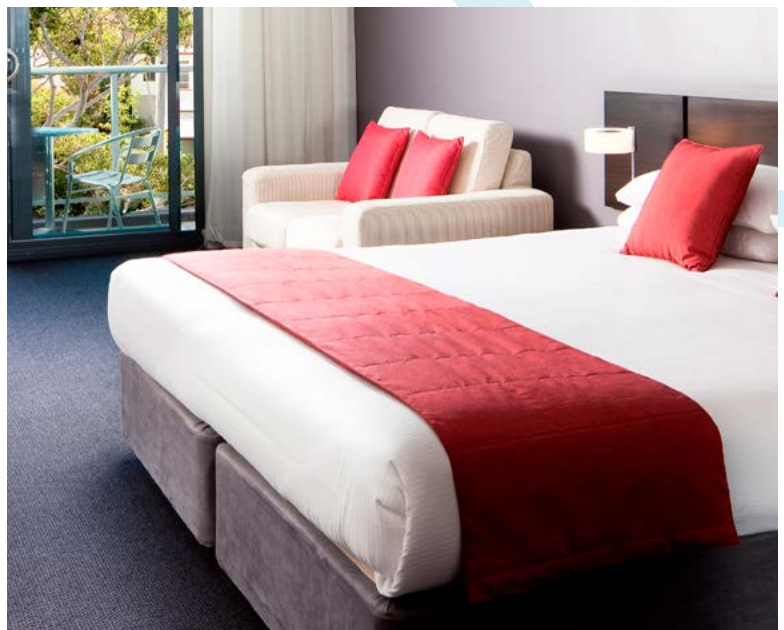
RESERVATIONS

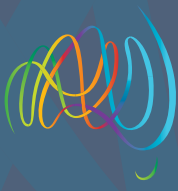
To book contact the Reservations Department directly and mention the 2017 Parks and Leisure Australia Conference.

T: 02 4230 7500

W: www.sebelharboursidekiama.com.au

E: h8805-sb3@accor.com





To register for the Conference and the Awards of Excellence Dinner, refer to the Registration page on the Conference website.

CONFERENCE (All prices are ex gst)	Early Bird Before 26 April 2017	Early Bird 27 April Onwards
Full Registration Member (incl. Gala Dinner)	\$700	\$800
Full Registration Non Member (incl. Gala Dinner)	\$850	\$950
One Day Registration Member	\$400	\$450
One Day Registration Non Member	\$450	\$500
Speaker Full Registration (incl. Gala Dinner)	\$500	\$500
Speaker One Day Registration (does not include social functions)	\$500	\$300
Additional Awards of Excellence Dinner tickets	\$130	\$130
Additional Welcome cocktail function tickets	\$50	\$50
Group Discount - Full Conference registrations only		
Purchase 3 or more full registrations (from the same organisation) to receive a 10% discount. You must register all delegates at the same time to be eligible for the discount. Group registrations may comprise members and non-members.		
Shared Registration		
Two delegates can share a full registration over the 2 days, but entitles only one to attend the Dinner		
If you require further assistance with registering please contact Bethanie Tobin on 0413 762 757 or email plansw@parksleisure.com.au .		





Heather Nesbitt
Social Commissioner,
Greater Sydney Commission

HEATHER NESBITT

Heather Nesbitt has over 30 years' experience in social sustainability, social housing, community infrastructure planning and social impact assessment. She has primarily worked on major greenfield and urban renewal projects, including public/social housing for government, non-profit and the private sector. Heather is committed to researching and delivering social outcomes which improve quality of life and well-being. She has significant experience in ensuring stakeholder and community consultation outcomes are considered in all projects.



Luke Madden
CEO, Surfing NSW

LUKE MADDEN & GINO BELSITO

Luke has been with Surfing NSW for over seven years in all aspects of operations from event management, coaching and judging management, sports development and delivering the events he once competed in. Luke is onsite at most Surfing NSW events from micro-grom to World Tour level, ensuring Surfing NSW's high standard continues to grow. Luke Madden took over as Surfing NSW CEO in mid-2016, replacing longstanding CEO Mark Windon and was heavily involved in the World Junior Surfing Championships, held in partnership with Kiama Municipal Council.

Following on from his career with Sydney Water spanning 30 years, In 2011 Gino commenced his career in local Government as the Director City Presentation at Liverpool Council and in March 2016 was appointed as the Director Engineering and Works at Kiama Council. In his role in Local Government Gino has been responsible for the Civil infrastructure including parks and open space. The transition into Local Government has provided new challenges in a very localized area and Gino has been working with professionals across the industry to ensure that a wide range of services are provided to the community to deliver a safe, clean and healthy living for the public.

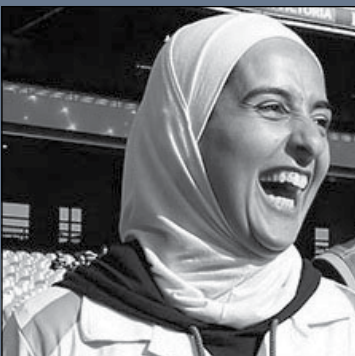
In 2016 Kiama Municipal Council partnered with Surfing NSW to hold the World Junior Surfing Championships and Gino was heavily involved with this.



Gino Belsito
Director of Engineering and Works,
Kiama Municipal Council

AMNA KARRA-HASSAN

Amna Karra-Hassan, is the founder and current President of the Auburn Giants AFC which includes players whose backgrounds are Lebanese, like Karra-Hassan, but also Egyptian, Palestinian, Croatian, Jordanian and Chinese. Recently bestowed the Community Fellowship Award to Sport from the University of Western Sydney this is yet another accolade to add to her growing collection including being nominated for the 2017 Australian of the Year Awards in the Local Hero Category.



Amna Karra-Hassan
Auburn Giants President & Football
Player, DFAT Council for Australian
Arab Relations, Women's Sport,
Gender & Inclusion



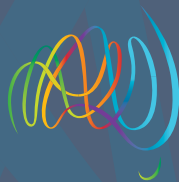
Proudly partnering with PLA to make Australia's local parks the best in the world.

GLG GreenLife Group is an open space facility services specialist.
Our services include:

- » GROUNDS
- » PROPERTY MAINTENANCE
- » WEED CONTROL
- » SLASHING
- » SPORTS TURF
- » TREES
- » LANDSCAPE
- » ENVIRONMENTAL
- » MANAGEMENT AND OPERATIONAL SUPPORT

Learn more about GLG at www.glgcorp.com

BUILD | MAINTAIN | SUSTAIN



WEDNESDAY 17 MAY 2017		
6 - 8.00pm	Conference Welcome party - Sebel Harbourside Kiama	
DAY 1 - THURSDAY 18 MAY 2017		
8.30am	Registration opens Trade exhibition opens - Assembly Hall	
9.15am	Conference commences in the Dunstan Room Welcome to Country NSW/ACT President - Mr Les Munn Mayor of Kiama - Cllr Mark Honey	
9.30am	Opening Keynote - Heather Nesbitt - Social Commissioner, Greater Sydney Commission Shaping Greater Sydney for People and Places to Thrive Sponsored by Kico Playground Inspection Services	
10.15am	MORNING TEA	
10.45am	Keynote - Amna Karra-Hassan – Auburn Giants President and Football Player, DFAT Council for Australian Arab Relations, Women's Sport, Gender Inclusion	
11.30am	PLANNING & PLACE DUNSTAN ROOM	ACTIVE RECREATION THE SCHOOL ROOM
	<i>IVM - a new approach to sustainable open space management</i> Nick Bloor - Founder & CEO, IVM Group	<i>Partnering with local councils: eCoFit</i> Professor Ronald Plotnikoff - Director, Priority Research Centre for Physical Activity and Nutrition; University of Newcastle
12.00pm	<i>KIDSCAPE: Engaging with young children in an outdoor community Play Day. Haig Park</i> Fiona Robbe - Director, Architects of Arcadia	<i>Healthy eating & active living - what are NSW Councils doing?</i> Jan Fallding - Social Impact & Strategic Planner, Hunter Valley
12.30pm	LUNCH	
1.30pm	PLANNING & PLACE DUNSTAN ROOM	ACTIVE RECREATION THE SCHOOL ROOM
	<i>Partner or Perish? Realising the potential of key local government assets during difficult financial times</i> Jeff Walkley - National Manager, Disability and Diversity & James Ellender - NSW State Manager, Belgravia Leisure	<i>Mountain biking, "the new golf" - Opportunities and Threats</i> Lynton Auld - Manager Landcare Services, Dubbo Regional Council
2.00pm	<i>Revitalisation of Queanbeyan CBD streetscape and greenspace</i> Tim Geyer - Manager Parks and Urban Spaces, Queanbeyan Palerang Regional Council	
2.30pm	AFTERNOON TEA	
3.00pm	<i>Performance Based Planning</i> Brian Milne - Director, Xyst	<i>AusPlay Survey - NSW Results</i> Anne Jackson - Project Officer, Office of Sport
3.30pm	<i>Department of Education - Joint Use Projects Policy</i> Simon Haire - Associate, OTIUM & Joseph Lantz - Director - Schools Planning, Department of Education	<i>Facility planning in an evolving participation landscape</i> Brad Billett - Principal Advisor, Facilities Strategy and Planning & Neil Finlay - Facilities Data and Analytics Officer, Facilities Strategy and Planning, Office of Sport
4.00pm	PANEL DISCUSSION - The Evolving Nature of Active Recreation, Diversification and Participation AFL NSW/ACT, Football NSW, Tennis NSW, Office of Sport	
5.00pm	DAY ONE CONFERENCE CLOSE	
6.30pm-11.30pm	AWARDS OF EXCELLENCE DINNER - The Pavilion, Kiama	



DAY 2 - FRIDAY 19 MAY 2017

8.30am Trade Exhibition Open - Assembly Hall

9.15am **Keynote**
DUNSTAN ROOM Luke Madden - CEO, Surfing NSW
& Gino Belsito - Director of Engineering and Works, Kiama Municipal Council
Overcoming challenges of holding major events in regional NSW

10.00pm **MORNING TEA**

10.30am	PLANNING & PLACE DUNSTAN ROOM	ACTIVE RECREATION THE SCHOOL ROOM
	<i>Public land for private gain?</i> Lachlan Sims - Principal & Amy Cahill - Principal, Public Place Land Management	<i>Increasing the Durability of Sportsfields for Winter Sport</i> Albie Leggett - Snr Territory Manager NSW, ACT and NZ Syngenta ANZ
11.00am	<i>Evaluation of reliable, functional, and lower maintenance green life for public space including innovation in parks and playgrounds.</i> Todd Layt - Managing Director - Ozbreed Pty Ltd	<i>The state of shade in NSW – How easy is it for our communities to access shade and how do we provide more?</i> Alecia Brooks - Portfolio Manager Skin Cancer Prevention & Nicola Groskops - Project Officer, Skin and Lifestyle, Cancer Institute of NSW
11.30am	<i>Hornsby Park Planning and Place making City of Port Phillip</i> Hornsby Park Planning and Place making Kurt Henkel - Landscape Coordinator, Hornsby Shire Council	<i>Herding cats or herding kids ... the Mona Vale Skate Park experience</i> Les Munn - Manager Special Projects - Northern Beaches Council
12.00pm	<i>Bidwill Reserve – Place making by stealth! How 1 project and \$69,000 became approximately 16 projects and nearly \$500,000!</i> Annette Stafford - Recreation Planner and Project Officer & Anne Sacco - Landscape Designer, Blacktown City Council	<i>The Main Event - Organising Events on Public Land</i> Lachlan Sims - Principal & Amy Cahill - Principal, Public Place Land Management
12.30pm	OFFICIAL CONFERENCE CLOSE	
12.45pm	LUNCH COLLECTION	
1.30pm	DEPARTURE FOR TECHNICAL TOURS	
1.30 - 4.00pm	TECHNICAL TOUR 1 Shell Cove Marina	TECHNICAL TOUR 2 Lawn Solutions Australia Berry Turf Farm and R & D Tour



Activate your community with Proludic Sport



Phone: 02 9485 8700
www.proludic.com.au

VIBRANT. VALUED. ACTIVE.

The Office of Sport works with key sector partners to develop a vibrant and valued sport and active recreation sector that enhances the lives of the people of NSW.



The Office is responsible for planning, managing and delivering high quality venues, facilities and sport and active recreation development programs, high performance sport and sports integrity and safety. It is also the driver for NSW sport policy and strategy, formation and dissemination of insights and information, and the promotion of partnerships.

13 13 02 | sport.nsw.gov.au



10 YEAR
BACKED BY OUR
PRODUCT WARRANTY 

Greener, Healthier Communities



Sir Walter
DNA CERTIFIED
GENETIC AUTHORITY



Rhizomatous
Tall Fescue

EUREKA
KIKUYU

PLATINUM
ZOYSIA



Quality natural turf is an integral part of enhancing the overall appeal of landscaping, from domestic tasks through to large open-space commercial projects.

Choosing the turf that's right for a particular situation is crucial. There are many different turf varieties, and not all of them suit your

situation or local environmental conditions.

For this reason, it's a good idea to discuss your project with your local **Lawn Solutions Australia** turf expert. Lawn Solutions Australia have done the research for you and we're so confident in that research - **Our turf comes with a 10 Year Product Warranty.**



1300 883 711
lawnsolutionsaustralia.com.au

PLA NSW/ACT REGION
**AWARDS OF
EXCELLENCE**
DINNER
THURSDAY 18TH MAY 2017

THE PAVILION, KIAMA
Dress - Cocktail

The Regional Awards of Excellence gala dinner will showcase the most creative, sustainable and innovative initiatives developed by the sport, leisure and parks industry throughout the NSW/ACT Region. The evening will include the announcement of the Awards of Excellence winners in the following categories:

Event of the Year Award
Community Program of the Year Award
Leisure and/or Open Space Planning Award
Leisure Facility of the Year Award
Park of the Year Award
Playspace Award (>\$0.5M)
Playspace Award (<\$0.5M)
Research Project Award
Best Use of Technology
David Aldous Student of the Year Award
Emerging Leader of the Year Award

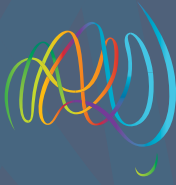


Brought to you by
AFL NSW/ACT
HOST TRAVIS WINKS



AWARD SPONSORS





THURSDAY 18TH
11.30am
DUNSTON ROOM

Presenter
Nick Bloor
Founder & CEO, IVM Group

IVM - a new approach to sustainable open space management

Intensive mowing activities are the predominant methods used to maintain vegetation in parklands, amenity areas and along roadsides across NSW. Due to favourable climatic conditions for grass growth, coupled with the invasion of fast-growing undesirable 'weedy' species, repetitive mowing is becoming too expensive and is unsustainable for many asset managers.

Integrated Vegetation Management (IVM) is considered an industry step change due to its science-based approach to managing mown vegetation. Backed by award-winning research, IVM integrates existing mechanical techniques and enhanced cultural practices with the strategic use of plant health technologies to reduce mowing interventions and asset lifecycle costs, while increasing safety and asset quality.

This presentation will follow a case study and provide a clear understanding of how the following can be achieved;

- Understanding the science behind the IVM process and comparing this to current practices.
- Enhance the asset quality and increase lifetime value.
- Reduce mowing frequency by up to 50%.
- Proactive strategies that reduce the vegetation biomass and post-mowing clip/debris by up to 30%.
- Strategies to reduce the number of man-hours spent mowing on network.

THURSDAY 18TH
11.30am
THE SCHOOL ROOM

Presenter
Professor Ronald Plotnikoff
Director, Priority Research Centre for Physical Activity and Nutrition
University of Newcastle

Partnering with local councils: eCoFit
Regular participation in both aerobic and resistance-based physical activity (PA) significantly reduces the risk of numerous chronic diseases and improves

both bone, and mental health. Over 50% of Australians do not meet public health guidelines for aerobic PA and less than 20% meet resistance training guidelines. PA behaviour change is complex and influenced by individual, social and environmental factors. Previous community-based PA approaches have shown promise; however, there is a need for scalable community-based interventions which promote PA behaviour change at multiple levels to explicitly target sustainable change. Local Government Councils are ideally positioned to assist in community-based PA promotion. A main Council objective is to promote the health and wellbeing of all residents using multi-component approaches that include the provision of facilities such as parks and equipment (e.g. outdoor gyms). Although Councils target parks to promote PA, often these facilities are underutilised, with Councils not addressing the individual and social factors that influence PA when designing parks. This provides a unique opportunity to partner with Councils to investigate innovative strategies to promote aerobic and resistance-based PA in the community. Building upon the findings of 'eCoFit', our recently successful park-based randomised controlled trial, and in collaboration with two Councils in regional NSW, we propose to evaluate the multi-component eCoFit intervention involving the installation of outdoor fitness equipment and trails in Council parks with a supporting smartphone app that addresses the individual and social barriers to PA. A 2-arm cluster Randomised Controlled Trial involving 14 park locations will examine the effectiveness of this scaled-up version of eCoFit with objectively measured PA as the primary outcome. The outcome, process and economic evaluation results from the cluster RCT will directly inform the Dissemination Study which will examine the Reach, Effectiveness, Adoption, Implementation and Maintenance (RE-AIM) of eCoFit across the 14 parks, with assessments conducted at baseline, 6 and 12-months. Highly innovative, this project has the potential to assist Councils throughout Australia to improve the design and implementation of future outdoor fitness parks.

THURSDAY 18TH
12.00pm
DUNSTON ROOM

Presenters
Fiona Robbe
Director
Architects of Arcadia

KIDSCAPE: Engaging with young children in an outdoor community Play Day. Haig Park
LEARNING OUTCOME: The delegate will learn:

- the value of hosting an outdoor child-friendly community play day (benefits & objectives to host organisations & community)
- what type of activities can be planned & provided
- essential "must-haves"
- promotion of event: before, during, after
- how delegates could do this where they work

ENGAGEMENT WITH AUDIENCE:

- video of KIDSCAPE
- short playful activity for groups of 2 delegates to do together
- powerpoint presentation

ABSTRACT:

The ACT Government, The National Capital Authority and In the City Canberra partnered with the Australian Institute of Landscape Architects to deliver KIDSCAPE in Haig Park Canberra in late 2016. This free outdoor event delivered a variety of outdoor activities targeted at young children aged 2 to 12 years of age. The event was enthusiastically attended by 1500 people, and ran for 5 hours.

Activities included: pump tracks for bikes, mud play, nature play, loose parts play, cardboard box play, story-telling, parkour, and an invaluable opportunity for children to participate in a "Gulliver's Mapping" exercise where they could tell adults of their vision for the future development of Haig Park.

This talk will identify the many benefits of outdoor pop-up play events, and how to organise and market one that your organisation could host.



THURSDAY 18TH

12.00 - 12.30pm
THE SCHOOL ROOM

Presenter

Jan Falding
Social impact & Strategic Planner
Hunter Valley

Healthy eating & active living - what are NSW Councils doing?

How can you find out what all other NSW Councils are doing in the recreation space? Do you need assistance in influencing your council to prioritise recreation and healthy living infrastructure?

A new free database and report will help you track down other interesting ideas and specific examples, suited to your Council's size and geographic location.

The former NSW Premier's Council for Active Living has released 'A baseline of healthy eating and active living within NSW local government Community Strategic Plans & selected Delivery Programs'. The project examined the CSPs produced by all 152 NSW councils in 2013, and a selected 15 Delivery Plans. Thousands of pages of Councils' CSP Objectives and Strategies relating to 'healthy eating and active living' have been distilled into a database that can be quizzed by many variables.

Of the almost 2,000 HEAL-related CSP Strategies captured by the project, more than half were about 'Getting People Active', including open space, sport and recreation in its diverse forms, walking and cycling for recreation and commuter needs, and 'active transport' issues, where connection to public transport is encouraged.

Other project categories relate to 'Connecting & Strengthening Communities' ('Facilitating incidental neighbourhood interaction', 'Making community spaces' and 'Building for crime prevention'), 'Healthy eating' and other general issues related to HEAL.

The presentation, by the author, will give you an overview of what the database and report contains, and how you can best use it to follow up on specific items of interest for your council or field of work.

THURSDAY 18TH

1.30 - 2.00pm
DUNSTAN ROOM

Presenters

Jeff Walkley
National Manager, Disability and Diversity
James Ellender
NSW State Manager, Belgravia Leisure

Partner or Perish? Realising the potential of key local government assets during difficult financial times

- Local Government is experiencing unprecedented challenges in meeting financial commitments, impacted by rate-capping, regulatory requirements and compounded by escalating costs
- Increasing, the expectations on Local Government to offer 'value-for-money' services and facilities are being scrutinised by other governments, and local residents
- Complexities associated with managing and maintaining modern aquatic, stadium, sport and fitness centres have added to the challenges being faced by Local Government

THURSDAY 18TH

1.30 - 2.30pm
THE SCHOOL ROOM

Presenter

Lynton Auld
Manager Landcare Services, Dubbo
Regional Council

Mountain biking, "the new golf" Opportunities and Threats

Mountain biking is the most rapidly growing sector of the cycling industry, it is an increasingly important leisure activity for our communities and one which Parks managers increasingly need to manage around. What opportunities does this offer? What threats does it pose? How can we, as land managers, meet the apparently conflicting demands of recreational access, environmental protection, technical challenge, rider safety and community engagement? This presentation will discuss changing demographics of natural area users, perceived conflicts between users, developments around Australia and abroad which may be templates for future development and lessons of what to avoid. There will be a discussion about mountain bike tourism and competitive mountain biking, and whose things have to offer, particularly to regional areas and there will be discussion about potential threats to the sport in NSW.

THURSDAY 18TH

2.00 - 2.30
THE DUNSTAN ROOM

Presenter

Tim Geyer
Manager Parks and Urban Spaces,
Queanbeyan Palerang Regional Council

Revitalisation of Queanbeyan CBD streetscape and greenspace

Queanbeyan is a city of 41,000 located in close proximity to the Australian National Capital, Canberra, and for various socioeconomic reasons, gained the unfortunate nick name of Struggle Town. Today Queanbeyan has turned that reputation around. By embarking on a project to revitalise its Central Business District, through extensive consultation, master planning, redesigned streetscapes and greenspace, Queanbeyan has been given a new lease on life. The creation of a cafe precinct with wide paths and capacity for alfresco dining under a canopy of trees is central to the project. Stage 2, the reactivation of the Queanbeyan River frontage, catering for events, markets and children's play, with emphasis on pedestrian movement to and from the CBD will significantly contribute to the liveability of Queanbeyan as a regional city. The project, now in its fifth year of construction has overcome the challenges of business continuity, pedestrian and vehicle movements while achieving high impact results with a relatively low budget, to become a model of success that can be used in other regional towns. Queanbeyan is now attracting outside interest in its CBD which will see future stages taken up by private investors, continuing on from the initial public investment.

THURSDAY 18TH

3.00 - 3.30pm
DUNSTAN ROOM

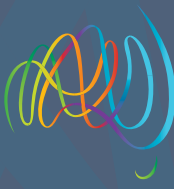
Presenter

Brian Milne
Director, Xyst

Performance Based Planning

Including a performance based assessment approach as part of the development of your parks and activity strategies will provide a robust and objective methodology for determining priorities for the implementation of your plans.

The session will develop your understanding of the purpose and benefits of adding performance assessment research to your planning processes.



You will learn how to develop and use performance assessment tools for your parks strategies together with specific activity strategies such as playgrounds and public toilets.

You will develop a clear understanding of how performance assessment information can be used in your renewal planning and park improvement program.

Performance relates to the ability of services, assets and facilities to provide the required level of service to the customer.

Performance assessment is undertaken to compare actual performance against service standards or design criteria. This includes elements such as:

- Functionality
- Capacity
- Utilisation
- Quality

This assessment has a strong emphasis on the customer experience.

It is important to be able to measure performance with a methodology that is objective, systematic and repeatable and produces a quantifiable result that can be ranked. This will provide solid evidence for decision making and resource allocation.

THURSDAY 18TH
3.00 - 3.30pm
THE SCHOOL ROOM

Presenter
Anne Jackson
Information and Research Officer
Office of Sport

AusPlay Survey - NSW Results
Following the Australian Bureau of Statistic's (ABS) decision to cease funding for all sport and recreation data collection, the Australian Sports Commission (ASC) agreed to fill this gap by funding the national participation tracking survey, AusPlay.

AusPlay is the largest and most comprehensive survey of its kind conducted in Australia and is the first national survey in Australia to collect adult's and children's sport and physical recreation participation data on the same annual survey vehicle. The first AusPlay state results were published in January 2017.

This presentation will outline the NSW results and provide an update on the case

studies that the ASC is running with a small number of local governments in 2017.

THURSDAY 18TH
3.30 - 4.00pm
DUNSTAN ROOM

Presenters
Simon Haire
Associate
Otium Planning Group

Joseph Lantz
Director
Schools Planning, Department of Education

Department of Education - Joint Use Projects Policy

For sometime the Department of Education has established joint use projects, but until recently this has been done without any formal policy or procedure framework. This has led to a mixed range of results.

The Department views joint use projects as an important part of future school development to reflect a broader vision of schools as part of a community's social infrastructure. To this end, the Department engaged Otium Planning Group to develop a policy framework and are now in the process of rolling it out with several partners.

- This presentation will:
- provide an overview of issues facing the Department in relation to student growth and asset management
 - define joint use projects and the Departments general position
 - review current examples of joint use projects with several NSW Council's including pilot projects implemented during drafting of the policy
 - outline the new policy and associated guidelines
 - identify how partners can engage with the Department to investigate possible joint use projects

THURSDAY 18TH
3.30 - 4.00pm
THE SCHOOL ROOM

Presenter
Brad Billett
Principal Advisor
Facilities Strategy and Planning
Office of Sport

Neil Finlay - Facilities Data and Analytics Officer, Facilities Strategy and Planning NSW Office of Sport

Facility planning in an evolving participation landscape

Participation in active recreation is ever changing as a result of changing lifestyles, increased population densities and diversity of our communities. How can we adapt to ensure positive community outcomes are enhanced? What impact will this have on developing strategies for facilities? In this presentation, we will:

- Look at population projections
- Identify the challenges of the current approaches to planning and investment
- Examine some broad active recreation trends
- Use of shared spaces
- Discuss what this could mean for facility planning, and
- Outline current and future projects by the Office of Sport.

The newly formed Facilities Strategy and Planning team in the Office of Sport has been established to work closely with local government, state sporting organisations and other key partners. This presentation will allow for some general discussion on how best this team can work with you in planning for sport and active recreation.

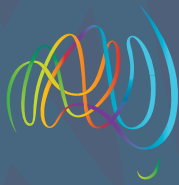
FRIDAY 19TH
10.30 - 11.00am
DUNSTAN ROOM

Presenters
Lachlan Sims
Principal

Amy Cahill
Principal, Public Place Land Management
Public Place Land Management

Public land for private gain?

The private development of public land is a sensitive issue and has invoked significant conflicts across Australia. Concerned citizens and community groups decry the loss of public assets to benefit private



interests and governments are accused of selling out to developers. Allowing private use and development of public space may also result in improved facilities and public benefits. Can the private use of public land result in positive land use outcomes for the long term benefit of the community? Does the privatisation and exclusive occupation of public land only benefit the wealthy at the expense of the wider public? This presentation will provide a brief analysis of the pros and cons of allowing private development on public land and includes recent case studies that may challenge your thinking on this issue.

FRIDAY 19TH
11.00 - 11.30am
THE SCHOOL ROOM

Presenters
Alecia Brooks
Portfolio Manager
Skin Cancer Prevention
Cancer Institute of NSW

Nicola Groskops
Project Officer, Skin and Lifestyle
Cancer Institute of NSW

The state of shade in NSW - How easy is it for our communities to access shade and how do we provide more?

The NSW Skin Cancer Prevention Strategy is a coordinated, comprehensive and community-wide approach to the development and implementation of skin cancer prevention activities in NSW including increasing access to adequate shade.

Evidence from the NSW Adult Population Health Survey suggests that NSW residents found it significantly easier to find shade in public parks, sporting areas, and outdoor swimming pools in 2014 compared to 2007. This workshop will look at the differences between our local government areas - where will your local government stand?

There are a number of barriers to providing shade in our community spaces, this session will also lead a discussion on these barriers as well as providing key resources to make shade accessible to all.

FRIDAY 19TH
11.30 - 12.00pm
DUNSTAN ROOM

Presenters
Kurt Henkel
Landscape Coordinator,
Hornsby Shire Council

Hornsby Park Planning and Place making

Hornsby Council has deliberated long and hard on what to do since it was forced to acquire the 100 metre deep disused Hornsby Quarry in 2002. While this large former industrial site is currently closed to the public, it presents as an opportunity to deliver a dramatic new park close to redevelopment areas in the Hornsby CBD.

A partnership has recently been brokered with NorthConnex to partially fill the quarry. This follows the preparation of a recreation potential study that confirmed the suitability of the site to recreation pursuits that will complement the dramatic topography and visual character. Council has engaged with the community by calling for ideas, meeting with stakeholders and forming a community reference group to help decide what sort of park should be developed. A goal of opening the parkland in 2023 is backed by significant Council funding. We just need to make sure we get it right!

FRIDAY 19TH
11.30 - 12.00pm
THE SCHOOL ROOM

Presenter
Les Munn
Manager Special Projects
Northern Beaches Council

Herding cats or herding kids ... the Mona Vale Skate Park experience

Mona Vale Skate Park is a wonderful example of stakeholder engagement and participation in a much sort after facility. Local parents and skaters were joined by council staff on a design committee which not only selected the design company , but worked thru the design process with the chosen company over a 6 month period. At the end of the day, a final design was approved by the committee, placed on public exhibition and tenders were called. Convic were awarded the contract and commenced construction in Feb. 2016. The \$1.5 m park , which includes a street course , mini bowl ,diamond pyramid, quarter pipe, volcano,

dog bowl ,renovated vert ramp, skateable seating, night lighting and many other features was officially opened in Sept. 2016.

The official opening was attended by approx. 2000 people and sponsored by Volcom and Boarders. The Volcom skate team entertained the crowd with awesome tricks and guest skater Poppy Star thrilled us with her demos on the vert ramp. As a follow up , a series of murals were designed with the help once again of local youths and installed on the frames of the renovated vert ramp. This further enhances the 'sense of ownership' for locals. Since its opening, the park has enjoyed maximum exposure everyday that weather allows. This is a great demonstration of the very positive outcomes that can be achieved with grass roots involvement from the very birth of a project.

FRIDAY 19TH
12.00-12.30pm
THE DUNSTAN ROOM

Presenters
Annette Stafford
Recreation Planner and Project Officer
Blacktown City Council

Anne Sacco
Landscape Designer,
Blacktown City Council

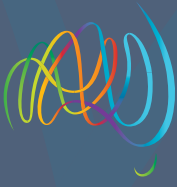
Bidwill Reserve – Place making by stealth! How 1 project and \$69,000 became approximately 16 projects and nearly \$500,000!

Blacktown City Council had \$69,000 to provide recreation infrastructure in Bidwill Reserve. The challenge: what could we build in a 4.8 ha neglected sportsground that had not been used for over 10 years, that the community would value??

The community were 'crying out' for assistance to reinvigorate the reserve and hopefully the Bidwill housing estate.

The \$69,000 was the catalyst in 2014 to commence ongoing and regular consultation with the local community. A stakeholder consultation group, consisting of representatives from schools, community organisations, the local church and residents was formed.

With active collaboration the \$69,000 grew to approximately \$500,000, inclusive of grant funding, for new infrastructure and various complementary arts and community projects that have developed through the initial project.



The work being undertaken within Bidwill Reserve has been the subject of a research project being undertaken by RMIT University, investigating the issues and opportunities related to young people, public space and participation.

The stakeholder consultation group has grown in strength and is even more effective and relevant in its community-driven approach to the improvement of Bidwill Reserve and Bidwill housing estate.

The resultant projects have come from the community, many designed by the community, some built by the community and all owned by the community. The ongoing consultation occurring between the local Bidwill community and Blacktown City Council demonstrates what can be achieved if all parties are prepared to work together for the long term.

Learning Outcome: What can be achieved when a resilient community, that is primarily social housing, demands support for their community that is in desperate need to be revitalised. How ongoing Council responsiveness to community needs and requests can lead to positive engagement, surprising results and positive and supportive communication for the long term benefits of the wider community.

FRIDAY 19TH
12.00-12.30pm
THE SCHOOL ROOM

Presenter
Lachlan Sims
Principal

Amy Cahill
Principal, Public Place Land Management
Public Place Land Management

The Main Event - Organising Events on Public Land

A typical urban public reserve will have a number of stakeholders all with different interests, attitudes and priorities in relation to how the use, manage and appreciate the reserve. How well do you understand the perspective of the different stakeholders? Is one stakeholder's interest more important than another's? This workshop will analyse the scenario of a major local event proposed on a well-used and well-loved area of public reserve. It will expose participants to some of the many viewpoints and differing attitudes towards the use and management of public land and how these might be addressed. Is it possible to balance multiple interests and still achieve positive outcomes? This workshop will include a practical exercise in the planning, consultation and approval process for an event on public land and experience and will give participants a fresh appreciation for the multiple aspects of managing public facilities for the benefit of the wider community.

**AFL NSW/ACT, Local Councils & PLA -
Partners in Community Sport**

- Surfaces - Turf & Synthetic
- Amenities
- Lighting
- Funding

For more information contact
david.lawson@afl.com.au



21ST NATIONAL CONFERENCE RACV ROYAL PINES RESORT, GOLD COAST, QLD




Join **New York Parks Commissioner Mitchell J Silver** who will showcase the strategies and business practices that help us as professionals learn, evolve and become more efficient and effective.

REGISTER NOW

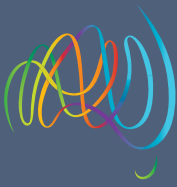
parksleisure.com.au/conference
+61 8 8332 0130

Surrounded by manicured gardens and a championship golf course, the RACV Royal Pines 100 hectare resort is just 12 minutes from Surfers Paradise. As you know the Gold Coast is set to host the XXI Commonwealth Games in 2018 and preparations are well underway. You will have the opportunity to visit world class facilities and hear from inspirational leaders.

- > Come and hear from a range of disciplines handpicked to inspire and motivate you into action
- > Straight talking practical advice to take back to your workplace
- > An agenda created by the industry for the industry
- > Come away feeling stronger, better connected, supported by your peers and able to navigate our rapidly changing industry

Our presenters will discuss innovative ideas, emerging trends and current issues across:

- **Managing**
- **Communicating**
- **Planning**
- **Balancing**



KOPMAN

KOMPAN is the world's No. 1 playground supplier. We develop, produce and market an extensive range of playground and fitness equipment that covers all age groups. All our playgrounds are designed from the ground up to improve childhood health and learning. All our products offer compelling design, high play value, uncompromising safety, unique innovation and long-lasting quality.

Contact: Michael Armati
Phone: +61 2 9436 4400
Email: michael@playbydesign.com.au
Website: www.kompan.com.au



XYST

Xyst provides professional services that combine asset management, strategic planning and operational management to provide our clients with truly holistic solutions. Key focus areas: Asset management plans, training and valuations, Levels of service development, Parks/open space strategies, Public toilet strategies, Playground strategies, Service delivery reviews, Performance auditing, IPWEA benchmarking program www.yardstickglobal.org

Contact: Jayson Kelly
Phone: 424 631 966
Email: jayson@xyst.biz
Website: www.xyst.biz



LAWN SOLUTIONS

Lawn Solutions Australia is a wholly Australian owned and operated business with Australia's leading group of accredited turf growers coming together under a single banner to offer a range of exclusive turf brands and turf related products across a comprehensive national network.

Contact: Joe Rogers
Phone: 0413 915 215
Email: joe@lawnsolutionsaustralia.com.au
Website: www.lawnsolutionsaustralia.com.au



MODUPLAY

Moduplay has been designing beautiful playgrounds for decades with a singular goal to let children have the best opportunity to learn through play with minimal risk. Moduplay manufactures in Australia using the latest technology to offer you the best possible outcome for any play area project.

Contact: Reece Conley
Phone: 0411989290
Email: reece@moduplay.com.au
Web site: www.moduplay.com.au



ANDREASENS GREEN

Andreasens Green Wholesale Nurseries is one of Australia's largest production nurseries and has more than 150 acres under production throughout its NSW and QLD growing facilities.

We supply quality green stock to parks and public spaces in Sydney and Regional areas and are proud to contribute towards the greening and rejuvenation of these spaces.

Andreasens Green have been a major supplier in a wide range of projects since its establishment in 1981, supplying all levels of government, residential and commercial projects on the East Coast.

Contact: Tim Carroll
Phone: 0401 074 584
Email: tim@andreasensgreen.com.au
Web site: www.andreasensgreen.com.au



VILLIAGE GREEN

Village Green is a premium turf with Plant Breeders Rights credentials and is far from your average kikuyu. It not only looks good, but it recovers well from harsh wear and tear, is very active in winter, dense cover that stops weeds as well as making it safer to play on and is tolerant of drought and low fertiliser environments. It has proven itself as the superior performer across all commercial applications including sports ovals, parks, entry statements and other green space applications.

Contact: Gary McKenzie
Phone: 0402816735
Email: gmack@bigpond.net.au
Website: http://www.villagegreenturf.com.au



SYNGENTA

Syngenta is a leading agriculture company helping to improve global food security by enabling millions of farmers to make better use of available resources. Through world class science and innovative crop solutions, their 28,000 people in over 90 countries are working to transform how crops are grown. Syngenta is committed to rescuing land from degradation, enhancing biodiversity and revitalizing rural communities.

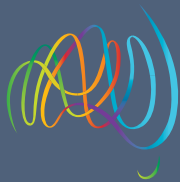
Contact: Albie Leggett
Phone: 0418 395 632
Email: Albie.Leggett@SYNGENTA.COM
Web site: www.syngenta.com



SCULLY

Scully Outdoor Designs have been supplying an extensive range of street furniture, shade sails and shelters since 1994. These include seats, benches, settings, bins, bollards and many other associated products. We specialise in a wide range of Shade Sail options, and an extensive range of Shelters in a variety of roof designs and materials.

Contact: Shane Scully
Phone: 0409521409
Email: shane@scully.net.au
Web site: www.scully.net.au



GLG

GLG is an open space specialist in landscape construction, maintenance and project management. We deliver a broad range of integrated commercial landscape, horticultural and environmental services for all types of organisations throughout remote, regional and urban Australia.

Contact: Scott Galvin
Phone: 0423021801
Email: sgalvin@glgcorp.com
Website: www.glgcorp.com



JASSTECH SOLUTIONS

JASSTECH's Sports Field and Street Lighting solutions are tailored to meet high expectations, with a guarantee of delivering the right lighting performance, reducing operating costs, and delivering realistic paybacks. With all luminaires supplied by JASSTECH backed by underwritten manufacturers' warranties, you get peace of mind that JASSTECH's lighting will perform as promised.

Contact: Sophie Stone
Phone: 0412 301 152
Email: ssstone@jasstech.com.au
Website: www.jasstech.com.au



SYNTHETIC GRASS & RUBBER SURFACES

Since 1984, Synthetic Grass & Rubber Surfaces Australia has been known and well-regarded, as a leading installer in NSW and ACT. We are dedicated to offering the best surfacing solution and ensuring a smooth transition from onsite consultation and installation, to advising you on the care and maintenance of your playground, sports field or backyard lawn.

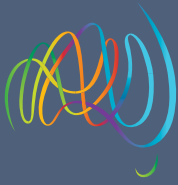
Contact: Rohan Fisher
Phone: 0430202500
Email: rohan@syntheticgrass.com.au
Web site: www.syntheticgrass.com.au



AUOZBREED

Ozbreed is an environmental plant and turf breeding company that has been established since 2002, specialising in no fuss, functional and reliable landscape gardening plants and turf. We focus on bringing you innovative plants and turf that are bred for performance. The development of our products involves intensive research and testing, ensuring they are at a high standard. Ozbreed plants and turf are revolutionising gardens and the landscape industry by providing a full line of drought tolerant, low maintenance products that can be used in many situations. Our varieties are leading the way in the industry and are readily adopted by landscape professionals, councils, etc. – anyone who values superior aesthetics and functionality in their landscapes.

Contact: Emil Montibeler
Phone: 0488669330
Email: emil@ozbreed.com.au
Website: www.ozbreed.com.au



OFFICE OF SPORT

The Office of Sport works with key sector partners to develop a vibrant and valued sport and active recreation sector that enhances the lives of the people of NSW. The Office is responsible for planning, managing and delivering high quality venues, facilities and sport and active recreation development programs, high performance sport and sports integrity and safety.

Contact: Phil Wishart
Phone: 0411 153 449
Email: phil.wishart@sport.nsw.gov.au
Web site: sport.nsw.gov.au



GM POLES

GM Poles Pty Ltd is an Australian company specialising in the design, fabrication, and certification of steel poles for use in landscape, street, sports and major flood lighting projects. GM Poles has a formidable engineering design team with expertise in developing bespoke solutions and are registered to certify poles for installation all over Australia.

Contact: Andrew Reeve
Phone: 0402489838
Email: andrewr@gmpoles.com.au
Web site: gmpoles.com.au



PROLUDIC

Proludic are award-winning innovative designers, manufacturers and installers of playground and sports equipment that engages children and adults alike. Together with our fully qualified designers and landscape architects, our Play and Sports Consultants are able to advise on the creation and implementation of outstanding playground and recreation facilities.

Contact: Madeleine Walding
Phone: 0418 401 531
Email: MWalding@proludic.com.au
Web site: www.proludic.com.au



AFL NSW/ACT

AFL NSW/ACT is the state controlling body for the code of Australian Football in NSW and the ACT. AFL NSW/ACT is responsible for the governance, administration, development and marketing of all aspects of Australian Football throughout the region. AFL NSW/ACT has more than 237,000 participants playing at all levels of football, from the introductory NAB AFL Auskick program to senior community football.

Contact: David Lawson
Phone: 0452 197 704
Email: david.lawson@afl.com.au
Web site: www.aflnswact.com.au



MARSUPIAL LANDSCAPE MANAGEMENT

Marsupial Landscape Management has been a leader in commercial landscape maintenance for nearly 30 years. We manage environmental and community assets for government bodies, infrastructure sectors and commercial businesses. We are dedicated to providing the highest quality services to our customers delivered through innovation, sustainable practices and safety.

Contact: Cameron Tracey
Phone: 0402 506 294
Email: cameront@marsupial.com.au
Web site: www.marsupial.com.au



Keeping Playgrounds Safe

KICO

Since 1987 Kico has been actively involved in the playground industry and are considered the leaders in this field.

- Comprehensive Audits to Playground Equipment and compliance Certificate to Australian Standards
- Playground Manager CD Database and Asset Management Programs
- NATA accredited Softfall Testing and Certification
- NATA, RPII and UTS accredited
- ISO/IEC17020 compliant

Contact: Michael Kearnes
Phone: 1300 790 118
Email: michael@kico.com.au
Web site: www.kico.com.au



Andreasens Green Wholesale Nurseries
1543 Elizabeth Drive, Kemp's Creek NSW 2178

P: 02 9826 1911 | F: 02 9826 1655 | E: sales@andreasensgreen.com.au

Andreasens Green Wholesale Nurseries is one of Australia's largest production nurseries and has more than 150 acres under production throughout its NSW and QLD growing facilities.

We supply quality green stock to parks and public spaces in Sydney and Regional areas and are proud to contribute towards the greening and rejuvenation of these spaces.

Andreasens Green have been a major supplier in a wide range of projects since its establishment in 1981, supplying all levels of government, residential and commercial projects on the East Coast.

New Website launched...



Did you know you
can now order
online...

Visit www.andreasensgreen.com.au to
register and start ordering.
Plant Selector database now available

Barangaroo Headland Park

Andreasens Green played an integral part in the successful delivery of the highly awarded Barangaroo Headland Park project. Once awarded the supply contract we formed part of the team along with landscape architects, soil technicians and other consultants to source, propagate, grow and manage the plants for this iconic landscape project over a 3-4 year period. The results were spectacular with delivery of over 75,000 native trees, palms and understorey plants, some of the advanced Eucalypts and Ficus as big as 8m tall! Designed to reflect what was originally there when Captain Cook first sailed in, locals and visitors from afar can now enjoy the amazing transformation of this old industrial space.



Barangaroo Headland Park

Plants Supplied by Andreasens Green

Proudly supporting



Helping enhance community green spaces

Syngenta helps create world-class Australian outdoor community spaces through world-class science. We look forward to working with PLA members to create appealing green spaces for the community to enjoy.

- Season-long weed and insect control with our products ACELEPRYN and BARRICADE that are exempt from poison scheduling
- More resilient turf with our product PRIMO MAXX - helping fields last the season and wear well
- Reduced mowing frequency and maintenance costs

The Syngenta logo, consisting of the word "syngenta" in a lowercase, white, sans-serif font, with a stylized green leaf icon above the letter 'a'.

syngenta®

For more information go to www.greencast.com.au

Syngenta Australia Pty Ltd, Level 1, 2-4 Lyonpark Road, Macquarie Park NSW 2113. ABN 33 002 933 717.
© Registered trademark of Syngenta Group Company. ™ Trademark of a Syngenta Group Company. © Syngenta 2017.
All products written in uppercase are registered trademarks of a Syngenta Group Company. AD 17-125

®

Active kids are happy, healthy kids!

Today's primary schoolchildren
lead far too sedentary lifestyles.

The **MOMENTS™ School Age
Combination System** is
designed to engage young
minds and encourage activity.



MOMENTS™ School Age Combination System

- Age appropriate challenging play
- Focus on physical and social play
- Verified by user group interaction



Scan the QR code
to discover the
range today.

KOMPAN
COROCORD
The Spacenet Inventors

NATIONAL HEAD OFFICE
Phone: 1800 240 159
sales@koman.com.au
www.koman.com.au

NSW & ACT
Play By Design Pty Ltd
Phone: (02) 9436 4400
www.playbydesign.com.au

VIC
Ikonik Playgrounds Pty Ltd
Phone: (03) 9144 5581
www.ikonikplaygrounds.com.au

QLD & NT
Urban Play Pty Ltd
Phone: (07) 3256 0554
www.urbanplay.com.au

WA
PlayRight Australia Pty Ltd
Phone: (08) 9256 1560
www.playright.com.au

SA
Playmazing Pty Ltd
Phone: 0410 651 432
www.playmazing.com.au

TAS
Ultimate Play Pty Ltd
Phone: 0407 295 115
www.ultimateplay.com.au

We sincerely thank all of our Conference sponsors

PRINCIPAL SPONSOR

GLG Greenlife Group

GOLD SPONSORS

NSW Office of Sport
Lawn Solutions Australia
Syngenta

WELCOME EVENT SPONSOR

Proludic

AWARDS OF EXCELLENCE SPONSOR

AFL NSW/ACT

KEYNOTE SPONSOR

Kico Keeping Playgrounds Safe

DELEGATE SACHEL SPONSOR

Marsupial Landscape Management

LANYARD SPONSOR

GM Poles

EVENT PARTNER

Kiama Municipal Council



PARKS & LEISURE
AUSTRALIA
(NSW/ACT)