



**KENTUCKY
FARM BUREAU
FEDERATION
97TH ANNUAL MEETING
NOVEMBER 30–DECEMBER 3, 2016**



Our Mission

Kentucky Farm Bureau is a voluntary organization of farm families and their allies dedicated to serving as the voice of agriculture by identifying problems, developing solutions and taking actions which will improve net farm income, achieve better economic opportunities and enhance the quality of life for all.



Welcome

Welcome to the 97th Annual Meeting of Kentucky Farm Bureau and thank you for participating in this important event!

This year's theme exemplifies what we really already know; "KFB Loves KY." Throughout the year, we work hard and diligently to better our agriculture industry and our rural communities. By doing so, we are touching the lives of each and every Kentuckian, every day.

During the next four days, we will see this theme in action through our many events and programs. Kentucky Farm Bureau members are truly a family but that family extends to all of our citizens as we continue to serve as the Voice of Agriculture. As we focus our attention toward prioritizing organizational goals for the future, we will work to help ensure that our state's farming community is lifted up and celebrated in an ongoing fashion.

Without a doubt, the success of this Annual Meeting and Farm Bureau as a whole is credited back to you, our dedicated volunteer leaders. The commitments of time and talent that you so freely offer to Farm Bureau are greatly appreciated and to be commended as we gather together in celebration knowing "KFB Loves KY."

Kentucky Farm Bureau will celebrate many things during this Annual Meeting. We will take time to honor individuals, families and county Farm Bureaus for their noteworthy contributions to Kentucky agriculture. We'll be informed and challenged by messages from our guest speakers. We'll elect leaders tasked to direct Kentucky Farm Bureau's efforts, set policy and prioritize legislative issues for 2017. We'll be amazed by the incredible talents of our youth participants. And we will certainly enjoy the spirit of the holidays as we relax and fellowship with one another. Thank you for taking time away from your homes and farms to meet, plan and celebrate with us!

As usual, there are many events, activities and special interest conferences planned for this year's Annual Meeting, and the schedules and maps listed on the following pages are included to help you better plan out your time. We certainly hope you enjoy the activities our staff has coordinated for your benefit, and also encourage you to come ready to learn, share and partner with your fellow Farm Bureau members. The Annual Meeting is a great place to gather new ideas from friends and peers across the state, and your participation just might help someone else walk away with a thought that can be implemented in their community, too.

Enjoy your stay in Louisville! It is our hope that you leave here energized and motivated. Thank you again for joining us, and we wish you and your families a very Merry Christmas and a happy and productive New Year.

Handwritten signature of Mark Hancey in black ink.

President

Handwritten signature of David L. Beck in black ink.

Executive Vice President

Wednesday, November 30

COUNTY AG EXTENSION AGENTS MEETING

Suite Tower – 1st Level
Sampson Room
1:30 p.m.

REGISTRATION & INFORMATION

Suite Tower – 2nd Level
Registration Area
2:00 p.m.

BOARD OF DIRECTORS MEETING

Suite Tower – 2nd Level
Carroll/Ford Room
3:30 p.m.

VESPERS AND MEMORIAL SERVICE

Suite Tower – 2nd Level
Grand Ballroom A
7:30 p.m.

Performance by
Little Paint Quartet
Floyd County
2016 Kentucky State Fair Champion Gospel Quartet



Message by
Amos Martin
Louisville, Kentucky

Thursday, December 1

REGISTRATION & INFORMATION

Suite Tower – 2nd Level
Registration Area
8:00 a.m.

AG CHEMICAL CONFERENCE

Suite Tower – 2nd Level
Brown Room
8:30 a.m.

POULTRY CONFERENCE

Suite Tower – 2nd Level
Nunn Room
8:30 a.m.

TOBACCO/FARM LABOR CONFERENCE

Suite Tower – 2nd Level
Carroll/Ford Room
8:30 a.m.

YOUNG FARMER EXCELLENCE IN AGRICULTURE AWARD CONTEST FINALS

Suite Tower – 1st Level
Wilkinson Room
9:00 a.m.

DAIRY CONFERENCE

Suite Tower – 2nd Level
Brown Room
10:00 a.m.

EQUINE CONFERENCE

Suite Tower – 2nd Level
Combs/Chandler Room
10:00 a.m.

Thursday, December 1

THE 2017 KENTUCKY AGRICULTURAL ECONOMIC OUTLOOK

Presented by the University of Kentucky College of Agriculture,
Food & Environment

Suite Tower – 2nd Level
Carroll/Ford Room
10:00 a.m.

COMMODITY LUNCHEON

Suite Tower – 2nd Level
Grand Ballroom B & C
11:30 a.m.



*The Honorable Ryan Quarles, Commissioner
Kentucky Department of Agriculture
Frankfort, Kentucky
Speaker*

BEEF CONFERENCE

Suite Tower – 2nd Level
Carroll/Ford Room
1:45 p.m.

FEED GRAINS, WHEAT & SOYBEAN CONFERENCE

Suite Tower – 2nd Level
Combs/Chandler Room
1:45 p.m.

FORESTRY CONFERENCE

Suite Tower – 2nd Level
Nunn Room
1:45 p.m.

RESOLUTIONS COMMITTEE MEETING

Suite Tower – 2nd Level
Breathitt Room
1:45 p.m.

WOMEN'S CAUCUSES

Suite Tower – 3rd Level
2:00 p.m.

District:

No. 2 – Wilson Room
No. 4 – Beckham Room
No. 6 – Taylor Room

District:

No. 8 – Jones Room
No. 10 – Coe Room

WOMEN'S BUSINESS MEETING

Suite Tower – 3rd Level
French Room
2:30 p.m.

FORAGE CONFERENCE

Suite Tower – 2nd Level
Carroll/Ford Room
3:30 p.m.

HORTICULTURE CONFERENCE

Suite Tower – 2nd Level
Combs/Chandler Room
3:30 p.m.

NATURAL RESOURCES CONFERENCE

Suite Tower – 2nd Level
Nunn Room
3:30 p.m.

YOUNG FARMER COMMITTEE MEETING

Suite Tower – 1st Level
Laffoon Room
4:00 p.m.

GENERAL SESSION

Suite Tower – 2nd Level
Grand Ballroom A
7:00 p.m.



*Mark Haney
President
Presiding*

Outstanding Farm Bureau Youth Contest
Conducted by Vickie Bryant, First Vice Chair
KFB Women's Advisory Committee

County Activities of Excellence Program Recognition
Kentucky Farm Bureau Safety Challenge Awards
Farm Public Relations Award
Communications Awards

Friday, December 2

RECOGNITION & AWARDS BREAKFAST

Suite Tower – 2nd Level
Grand Ballroom B & C
7:30 a.m.

REGISTRATION & INFORMATION

Suite Tower – 2nd Level
Registration Area
8:00 a.m.

GENERAL SESSION

Suite Tower – 2nd Level
Grand Ballroom A
9:15 a.m.



*Eddie Melton
First Vice President
Presiding*

President's Address – Mark Haney

Kentucky Farm Bureau Farmer of the Year Award

Distinguished Service Awards

Recognition of the 2015-2016 LEAD Class Graduates



*Fred Barnes
The Political Landscape in Washington
Washington, D.C.
Speaker*

GOLD STAR LUNCHEON

Rivue Tower – 3rd Level
Cochran and Addition Rooms
12:00 noon



*Betty Farris, Chair
KFB Women's Advisory Committee
Presiding*

County Gold Star Awards Presentation

YOUNG FARMERS LUNCHEON

Suite Tower – 2nd Level
Grand Ballroom B & C
12:00 noon



*Kent Moore, Chair
KFB Young Farmer Advisory Committee
Presiding*

Young Farmer Awards Presentation

BUSINESS SESSION

Suite Tower – 2nd Level
Grand Ballroom A
2:00 p.m.

Mark Haney, President, Presiding

Report of Credentials Committee

Discussion and Adoption of Resolutions

Friday, December 2

CAUCUSES TO NOMINATE DIRECTORS

Suite Tower
4:30 p.m.

District

- No. 1 - Brown Room, 2nd Level
- No. 2 - Breathitt Room, 2nd Level
- No. 3 - Nunn Room, 2nd Level
- No. 4 - Jones Room, 3rd Level
- No. 5 - Coe Room, 3rd Level
- No. 6 - Laffoon Room, 1st Level
- No. 7 - Carroll/Ford Room, 2nd Level
- No. 8 - McCreary Room, 3rd Level
- No. 9 - Stopher Room, 3rd Level
- No. 10 - Combs/Chandler Room, 2nd Level
- No. 11 - Taylor Room, 3rd Level
- Insurance Agents - Beckham Room, 3rd Level

PRESIDENT'S RECEPTION

Suite Tower - 2nd Level
Grand Ballroom B & C
5:45 p.m.

GENERAL SESSION

Suite Tower - 2nd Level
Grand Ballroom A
7:00 p.m.



*Fritz Giesecke
Second Vice President
Presiding*

Discussion Meet Finals
Randy Adams, Anderson County
2015 Discussion Meet Winner, Moderator

Variety Showcase
Conducted by Sharon Furches, Second Vice Chair
KFB Women's Advisory Committee

Saturday, December 3

PUBLIC AFFAIRS BREAKFAST

Suite Tower - 2nd Level
Grand Ballroom B & C
7:30 a.m.



*The Honorable Andy Barr (invited)
United States House of Representatives
Sixth District - Kentucky
Speaker*

BUSINESS SESSION

Suite Tower - 2nd Level
Grand Ballroom A
9:00 a.m.

Mark Haney, President, Presiding



*Executive Vice President's Report
David S. Beck*



*Address by
The Honorable Mitch McConnell (invited)
U.S. Senate Majority Leader*

Report of Credentials Committee
Approval of Minutes of Last Annual Meeting
Election of Directors
Election of Officers
10:00 a.m.
Discussion and Adoption of Resolutions
Unfinished Business

BOARD OF DIRECTORS MEETING

Suite Tower - 2nd Level
Carroll/Ford Room

HEADQUARTERS

Suite Tower – 2nd Level
Clements Room

PRESS ROOM

Suite Tower – 2nd Level
Willis Room

SPONSORS & GIFTS

Case IH
Crop Production Services
Farm Credit Mid-America
Jacobi Sales
Kubota Tractor Corporation
New Holland North America
Pioneer Seed
Premier Crop Insurance
Republic Bank
Southern States Cooperative
Southern Farm Bureau Life Insurance Company
Kentucky Farm Bureau Insurance Companies
Kentucky Farm Bureau Federation

CREDENTIALS COMMITTEE

Ms. Mary Kate Kordes, Central City, Chair
Mr. Jay Coleman, Cave City
Mr. Terry Lawson, Mt. Vernon

CREDENTIALS DESK SCHEDULE

Suite Tower – 2nd Level
Window Seat Alcove Near Registration

Wednesday, November 30	2:00 p.m. – 3:30 p.m.
Thursday, December 1	8:00 a.m. – 11:30 a.m. 1:30 p.m. – 5:00 p.m.
Friday, December 2	8:00 a.m. – 12 noon 1:00 p.m. – 1:15 p.m. 2:00 p.m. – 4:00 p.m. At the conclusion of district caucuses
Saturday, December 3	8:00 a.m. – 8:45 a.m.

HOSPITALITY

Sponsored by Kentucky Farm Bureau Insurance Companies

Suite Tower – 2nd Level – Exhibit Area

Thursday, December 1	8:00 a.m. – 10:00 a.m. 2:00 p.m. – 4:00 p.m.
----------------------	---

TRADE SHOW

Suite Tower – 2nd Level – Exhibit Area

Exhibits will be open –	
Thursday, December 1	8:00 a.m. – 5:00 p.m.

KENTUCKY FARM BUREAU'S COUNTRY STORE

Suite Tower – 2nd Level
Hallway Outside Exhibit Area

Thursday, December 1	9:00 a.m. – 5:00 p.m.
Friday, December 2	9:00 a.m. – 4:00 p.m.

COUNTY ACTIVITIES OF EXCELLENCE PROGRAM

Bath County
Bourbon County
Harlan County
Hopkins County
Nelson County

EXECUTIVE COMMITTEE & BOARD OF DIRECTORS

Mark Haney, Nancy, President

Eddie Melton, Sebree, First Vice President

Fritz Giesecke, Horse Cave, Second Vice President

David S. Beck, State FB Office, Executive Vice President

Tripp Furches, Murray

Glenn Howell, Fulton

Kelly Thurman, Livermore

Mary Kate Kordes, Central City

Larry Thomas, Elizabethtown

Patrick M. Henderson, Irvington

Russell Poore, Russellville

Jay Coleman, Cave City

Scott Travis, Cox's Creek

Randy Chrisman, Lawrenceburg

Joe Paul Mattingly, Raywick

David Chappell, Owenton

Terry Rowlett, Campbellsburg

Danny Wilkinson, Columbia

Kim McCoy, Burkesville

David L. Campbell, Stanford

Terry Lawson, Mt. Vernon

Alex Barnett, Cynthiana

Shane Wiseman, Winchester

David McGlone, Grayson

Carroll Amyx, Campton

Bige Hensley, Manchester

Cloyce Hinkle, Artemus

Marshall Coyle, Immediate Past President, Owingsville

Betty Farris, KFB Women, Roundhill

Kent Moore, KFB Young Farmers, Owensboro

Roger Fannin, KFB Insurance Agents, Harlan

Dr. Nancy Cox, UK College of Agriculture, Food & Environment
Lexington

Brandon Davis, Kentucky Department of Education, Lawrenceburg

Nick Carter, Kentucky Association of County Agricultural Agents
Paris

ANNUAL MEETING ARRANGEMENTS COMMITTEE

David S. Beck
Overall Program/General and Business Sessions

Katherine Fugate
Annual Meeting Manager

Rachel Thomas
Recording Secretary

Phil Dowdle and Christi Harper
Voting Delegate Certification

Beth Wisman
Registration Coordinator and Ticket Sales

Kelli Jolly
Headquarters

Tom Logue
Trade Show and Convention Hall Manager

Dave Metzgar
Sound and Technical Support

Susie Tanner
Leadership Enhancement for Agricultural Development (LEAD)
Program

B. Todd Bright, Tim Thornberry, Bob Shrader and Matt Hilton
Communication and Public Relations

Carilynn Coombs
Social Media

Melissa LaRoche and Kelley Parks
Press Room

Jeff Harper
Public Affairs Breakfast and Resolutions

Sara Stivers
Resolutions

L. Joe Cain
Commodity Luncheon, Conferences and National Issues

Fran McCall
Commodity Conferences

Ed McQueen
Market Information, County Activities of Excellence Program and
Commodity Conferences

Bryan Alvey
Local Issues, Policy Development and Political Education

David Davis, Scott Christmas and Mark Lyle
Vespers and Memorial Service

Matthew Ingram
Recognition and Awards Program

Scott Christmas and Jackson Tolle
Agriculture Education, Women's and Young Farmer Activities

Dwight Greenwell
Member Services

John Sparrow
Transportation

Special Interest Conferences

RESOLUTIONS COMMITTEE

Eddie Melton, Sebree, Chair
Betty Farris, Roundhill
Jay Campbell, Russellville
Penny Fleming, Hickman
Doug Hall, Benton
Gerry Hayden, Calhoun
Bill Holbrook, Morganfield
Kevin Cashman, Webster
Mitchel Logsdon, Munfordville
Maurice Heard, Rockfield
Larry Clark, Greensburg
Larry Williams, Simpsonville
Josh Martin, Taylorsville
Mark Kinsey, Crittenden
Gary Chaplin, Butler
Wes Hargis, Science Hill
Jerry Durham, Yosemite
Kenneth Rice, Irvine
Greg Harris, Richmond
Randall Wood, Flemingsburg
Rob McClanahan, Butler
Norwood Caudill, Morehead
Berkley Mark, Mt. Sterling
Don Miniard, Bledsoe
Brent Cornett, London

Thursday, December 1

AG CHEMICAL CONFERENCE

Suite Tower - 2nd Level - Brown Room - 8:30 a.m.
PRESIDING: Dwight Greenwell, Director, Member Services
Kentucky Farm Bureau Federation
Louisville, Kentucky

“2017 Chemical Outlook”

Brad Reed, Owner
KOVA
Greensburg, Indiana

POULTRY CONFERENCE

Suite Tower - 2nd Level - Nunn Room - 8:30 a.m.
PRESIDING: Jay Coleman, Chair
KFBF Poultry Advisory Committee
Cave City, Kentucky

“Kentucky Initial State Response and Containment Plan”

Jennifer Hall, NPIP Program Director
Kentucky Poultry Federation
Winchester, Kentucky

“Getting More Use Out of Your Ventilation System”

Dr. Morgan Hayes, Assistant Extension Professor
Livestock Systems
University of Kentucky Biosystems & Agricultural Engineering
Lexington, Kentucky

“Biosecurity: 14 Points of National Poultry Improvement Plan”

Dr. Tony Pescatore, Associate Department Chair and Poultry
Extension Specialist
Department of Animal and Food Sciences
University of Kentucky College of Agriculture, Food & Environment
Lexington, Kentucky

Special Interest Conferences

Thursday, December 1

TOBACCO/FARM LABOR CONFERENCE

Suite Tower – 2nd Level – Carroll/Ford Room – 8:30 a.m.

PRESIDING: Scott Travis, Chair
KFBF Tobacco Advisory Committee
Cox's Creek, Kentucky

David Chappell, Chair
KFBF Farm Labor Advisory Committee
Owenton, Kentucky

“Trials with H-2A Program”

Mark Paschall, Owner
Paschall Farms
Murray, Kentucky

“Tobacco Crop Insurance Programs”

Roddrick Bell, Director
USDA Risk Management Agency
Jackson, Mississippi

“Water Management Working Group Update”

L. Joe Cain, Director, Commodity Division
Kentucky Farm Bureau Federation
Louisville, Kentucky

DAIRY CONFERENCE

Suite Tower – 2nd Level – Brown Room – 10:00 a.m.

PRESIDING: Terry Rowlett, Chair
KFBF Dairy Advisory Committee
Campbellsburg, Kentucky

“Robotic Milking”

Carl Chaney, Owner
Chaney's Dairy Barn
Bowling Green, Kentucky

“Managing Disease Outbreaks: VFD Update”

Dr. Robert Stout, State Veterinarian
Kentucky Department of Agriculture
Frankfort, Kentucky

“Farm Bill Program Update”

Katelyn McCulloch, Economist
American Farm Bureau Federation
Washington, D.C.

EQUINE CONFERENCE

Suite Tower – 2nd Level – Combs/Chandler Room – 10:00 a.m.

PRESIDING: Alex Barnett, Chair
KFBF Equine Advisory Committee
Cynthiana, Kentucky

“Kentucky Horse Council Programs”

Katy Ross, Executive Director
Kentucky Horse Council
Lexington, Kentucky

“County Judge's Perspective on Horse Abandonment”

Alex Barnett, County Judge
Harrison County
Cynthiana, Kentucky

“Kentucky Equine Education Project Programs”

Joe Clabes, Executive Director
Kentucky Equine Education Project
Lexington, Kentucky

THE 2017 KENTUCKY AGRICULTURAL ECONOMIC OUTLOOK

Presented by the University of Kentucky College of Agriculture, Food & Environment

Suite Tower – 2nd Level – Carroll/Ford Room – 10:00 a.m.

Welcome by Mark Haney, President, Kentucky Farm Bureau

Panel Discussion by UK Faculty – Dean Nancy Cox, Moderator

Introductions – Leigh Maynard
U.S. and Kentucky Ag Economy/Tobacco Outlook – Will Snell
Livestock Outlook – Kenny Burdine
Grains Outlook – Todd Davis
Horticulture Outlook – Tim Woods
Forestry Outlook – Jeff Stringer
Income Implications for Kentucky Farms and Farm Households – Jerry Pierce

Special Interest Conferences

Thursday, December 1

BEEF CONFERENCE

Suite Tower – 2nd Level – Carroll/Ford Room – 1:45 p.m.

PRESIDING: Fritz Giesecke, Chair
KFBF Beef Advisory Committee
Horse Cave, Kentucky

“Cattle Trade and Market Outlook”

Katelyn McCulloch, Economist
American Farm Bureau Federation
Washington, D.C.

“The Veterinarian Feed Directive (VFD) Panel: Veterinarian Perspective”

Dr. Muncie Pryor, Veterinarian
Henry County Animal Clinic
New Castle, Kentucky

Dr. Kevin Vance, Veterinarian
Heartland Animal Hospital
Horse Cave, Kentucky

FEED GRAINS, WHEAT & SOYBEAN CONFERENCE

Suite Tower – 2nd Level – Combs/Chandler Room – 1:45 p.m.

PRESIDING: Tripp Furches, Chair
KFBF Feed Grains & Wheat Advisory Committee
Murray, Kentucky

Kim McCoy, Chair
KFBF Soybean Advisory Committee
Burkesville, Kentucky

“Bee Care & Pollinator Protection”

Lewis Bradley, Senior Technical Sales Specialist
Bayer Crop Science
Hopkinsville, Kentucky

“GMO’s & Crop Protection”

Elisha Modisett Kemp, State Government Affairs Manager
Dow AgroSciences
Indianapolis, Indiana

“Water Management Working Group Update”

Sharon Furches, Member
KFBF Water Management Working Group
Murray, Kentucky

FORESTRY CONFERENCE

Suite Tower – 2nd Level – Nunn Room – 1:45 p.m.

PRESIDING: Bige Hensley, Chair
KFBF Forestry Advisory Committee
Manchester, Kentucky

“How to Market Your Timber”

Chris Will, President
Central Kentucky Forest Management
Danville, Kentucky

Mervin Strader, Owner
Strader Brothers LLC
Elkton, Kentucky

“Agricultural Damage Issues, Regulations, and Protocols Involving Deer, Elk, and Bears in Kentucky”

Dr. Matthew Springer, Assistant Extension Professor of Wildlife Management
Department of Forestry
University of Kentucky College of Agriculture, Food & Environment
Lexington, Kentucky

FORAGE CONFERENCE

Suite Tower – 2nd Level – Carroll/Ford Room – 3:30 p.m.

PRESIDING: David McGlone, Chair
KFBF Forage Advisory Committee
Grayson, Kentucky

“USDA Tall Fescue Research Update”

Dr. Glen Aiken, Director
USDA/ARS Forage-Animal Production Research Unit
Lexington, Kentucky

“21 Years of KY Grazing Schools: What We’ve Learned About Grazing Management”

Dr. Ray Smith, Forage Extension Specialist
Department of Plant and Soil Sciences
University of Kentucky College of Agriculture, Food & Environment
Lexington, Kentucky

“Farmer Success with NRCS Cost Share Programs”

Adam Jones, Natural Resources Specialist
USDA Natural Resources Conservation Service
Lexington, Kentucky

Special Interest Conferences

Thursday, December 1

HORTICULTURE CONFERENCE

Suite Tower – 2nd Level – Combs/Chandler Room – 3:30 p.m.

PRESIDING: Russell Poore, Chair
KFBF Horticulture Advisory Committee
Russellville, Kentucky

“Weed Control for Fruit and Vegetables”

Dr. Shawn Wright, Horticulture Extension Specialist
Robinson Center for Appalachian Resource Sustainability
University of Kentucky College of Agriculture, Food & Environment
Jackson, Kentucky

“USDA Food Safety Modernization Act and University of Kentucky Support Resources”

Josh Lindau, Horticulture Marketing Specialist
Kentucky Department of Agriculture
Frankfort, Kentucky

Dr. Paul Vijayakumer, Extension Food Science Specialist
Department of Animal and Food Sciences
University of Kentucky College of Agriculture, Food & Environment
Lexington, Kentucky

“Fruit and Vegetable Production in Kentucky”

Dr. John Strang, Extension Fruit & Vegetable Specialist
Department of Horticulture
University of Kentucky College of Agriculture, Food & Environment
Lexington, Kentucky

NATURAL RESOURCES CONFERENCE

Suite Tower – 2nd Level – Nunn Room – 3:30 p.m.

PRESIDING: Larry Thomas, Chair
KFBF Natural Resources Advisory Committee
Elizabethtown, Kentucky

“Water Management Working Group Update”

Steve Coleman, Chair
KFBF Water Management Working Group
Frankfort, Kentucky

“Kentucky Department of Fish & Wildlife Resources Update”

Greg Johnson, Commissioner
Kentucky Department of Fish & Wildlife Resources
Frankfort, Kentucky

“Dealing with Wild Hog Problems in Kentucky”

John Hast, Biologist
Kentucky Department of Fish & Wildlife Resources
Frankfort, Kentucky

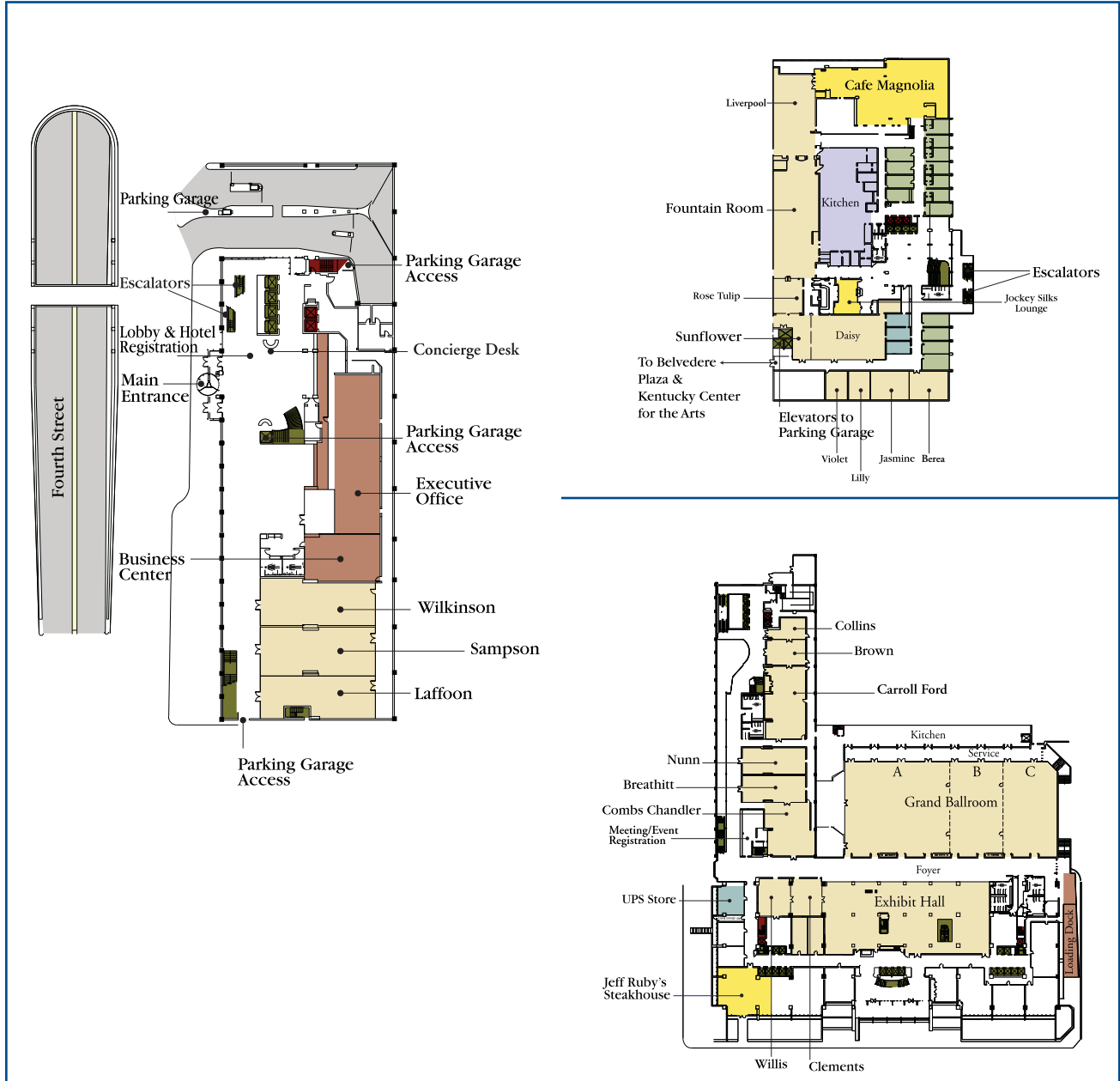
“Kentucky Pollinator Protection Plan”

Dr. Tammy Horn Potter, State Apiarist
Kentucky Department of Agriculture
Frankfort, Kentucky

The Galt House

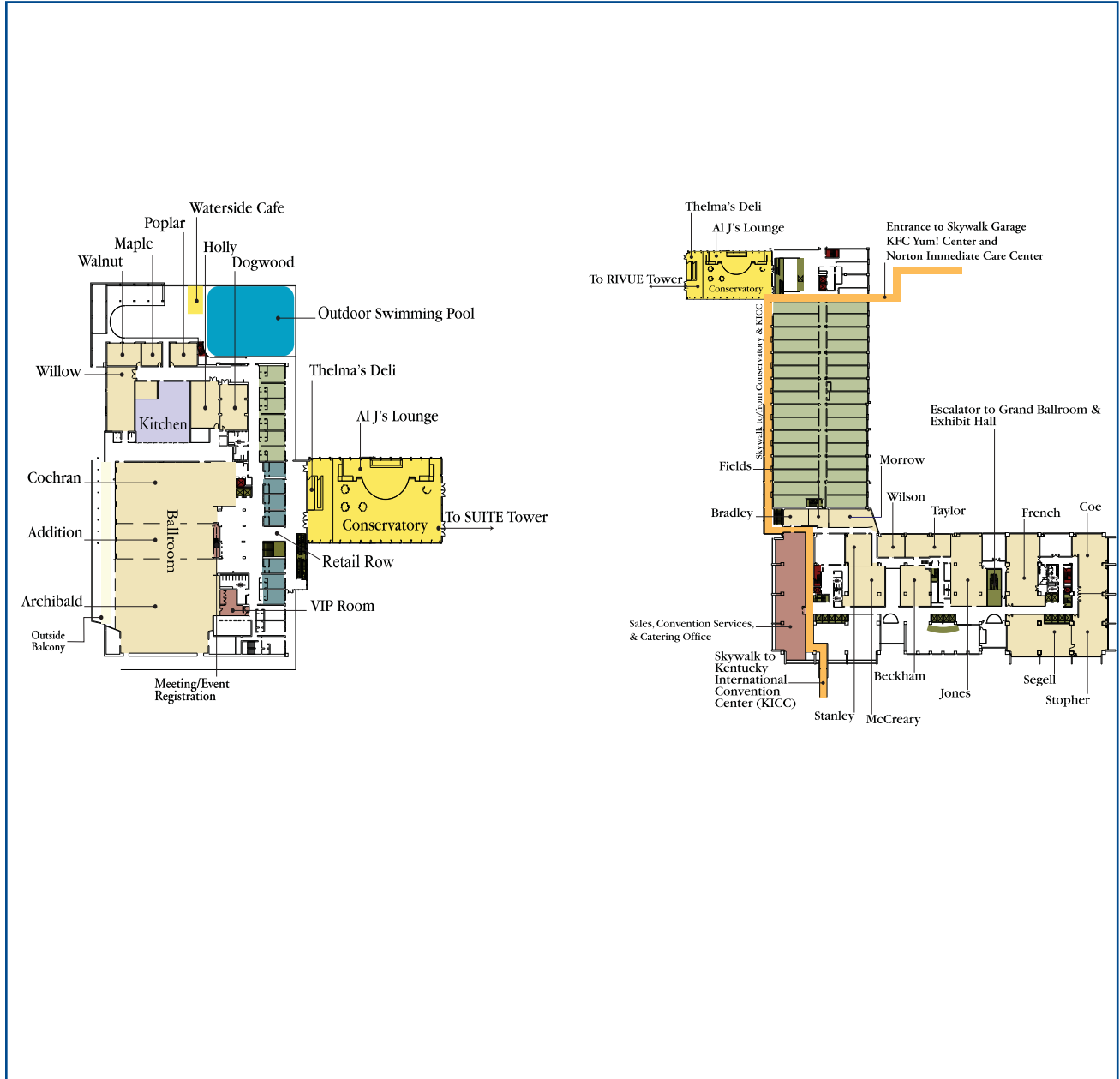
1st Floor

2nd Floor



The Galt House

3rd Floor





Scan this QR code & connect to KFB programs through social media.

You can also keep up to date with the annual meeting by following us on Twitter @kyfb or #kyfbam16.



KYFB.COM