

Announcing Dell's next-generation tower and rack workstation portfolio



#dellworkstation

Past. Present. Future. Workstation innovation and leadership



'97 '01 '05 '08 '10 '12 '13 '14 '15

Dell enters the personal workstation market

1st to launch a mobile workstation

1st tier 1 vendor to launch dual-core workstation

1st to introduce 2U rack workstation

World's most powerful 15" and 17" mobile workstations

Award-winning tower & mobile chassis design & World's Most powerful 15" and 17" mobile workstations

Smallest Workstation, Most Powerful Rack. First automated workstation performance tool, World's thinnest and lightest mobile workstation

Spearhead Virtualization & Continued innovation in thin and light. Expanded application optimization through Dell Precision Optimizer

Precision Cloud services. Workstation augmentation and collaboration. Building greater value into mobility



Dell partners with leading independent software vendors (ISVs)

Engineering & Manufacturing



Media & Entertainment



Scientific:
Including
HCLS & Oil & Gas



Economics & Financial Services



Autodesk



PTC



SIEMENS



Autodesk



Adobe



matrox

SONY

CREATIVE SOFTWARE

MAXON

THE FOUNDRY

Luxology



grass valley

Schlumberger



Visibly yours



Custom Apps



Multi-screen environments



Dell's next-generation tower & rack workstations

T3610



Tower 5810



T5610



Tower 7810



T7610



Tower 7910



R7610



Rack 7910



Precision T5810



Outstanding mainstream performance, in an innovative, compact chassis

- E5-1600V3 Haswell & future Broadwell EP
- Up to One 160W CPU
- Up to 300W professional graphics
- DDR4 RDIMM memory up to 256GB
- Integrated 6.0Gb/s SATA controller,
- Optional 12Gb/s PCIe Raid Controller Cards
- Intel vPro
- ISV Certifications



Precision T7810



More processing power in a compact innovative chassis

- E5-2600 V3 Haswell & future Broadwell EP
- Up to Dual 160W CPUs
- Up to 300W professional graphics
- DDR4 RDIMM memory up to 256GB
- Integrated 6.0Gb/s SATA controller,
- Optional 12Gb/s PCIe Raid Controller Cards
- Intel vPro
- ISV Certifications



Precision T7910



Ultimate Workstation performance & scalability

- E5-2600 V3 Haswell & future Broadwell EP
- Up to Dual 160W CPUs
- Up to 675W professional graphics
- DDR4 RDIMM memory up to 1TB*
- Integrated 12Gb/s SW Raid controller
- Optional 12Gb/s PCIe HW Raid Controller
- Intel vPro
- ISV Certifications
- Highly expandable



Precision R7910



Ultimate Workstation performance, scalability & security in a 2U rack form factor

- E5-2600 V3 Haswell & future Broadwell EP
- Up to Dual 160W CPUs
- Up to 675W professional graphics
- DDR4 RDIMM memory up to 1TB*
- Integrated 6.0Gb/s SATA controller,
- Optional 12Gb/s Mini-PERC RAID Controller
- Dell iDRAC Datacenter Manageability
- Best in class remote access solutions
- Ideal for workstation virtualization



Smart Design: best-in-class chassis innovation



Convenient, push button lock



Handle for easy deployment



Better airflow for a quieter, cooler user experience



Easy troubleshooting. Functioning PSU handle glows

Tool-less externally accessible power supply



Tool-less, quick release hard drives. Externally accessible on Tower 7910



Precision Graphics



T5810

- Nvidia NVS 310, 315
- Nvidia K420 (Oct 2015)
- AMD W2100, W4100
- Nvidia K620
- AMD W5100, W7100
- Nvidia K2200, K4200
- Nvidia K5200, K6000

Up to 2 cards



T7810

- Nvidia NVS 310, 315
- Nvidia K420 (Oct 2015)
- AMD W2100, W4100
- Nvidia K620
- AMD W5100, W7100
- Nvidia K2200, K4200
- Nvidia K5200, K6000
- Nvidia Tesla K20C

Up to 2 cards



T7910

- Nvidia NVS 310, 315
- Nvidia K420 (Oct 2015)
- AMD W2100, W4100
- Nvidia K620
- AMD W5100, W7100
- Nvidia K2200, K4200
- Nvidia K5200, K6000
- Nvidia Tesla K20C
- Intel Xeon Phi 3120A (S&P)

Up to 4 cards



R7910

- Nvidia NVS 310,
- Nvidia K620
- AMD W5100
- Nvidia K2200, K4200
- Nvidia K5200, K6000
- Nvidia Tesla K20C
- Nvidia K2A
- Intel Xeon Phi 3120A (S&P)

Up to 4 cards

Updated to deliver **unprecedented performance** and **scalability**

All new on the inside **means significant performance gains vs. prior generations**

- **Processor:** Intel Xeon E5-2600 v3 & E5-1600 v3 Haswell CPU's
- **Graphics:** Latest AMD FirePro and NVIDIA Quadro Graphics
- **Memory:** DDR4 Memory up to 1TB on Tower 7910 and Rack 7910
- **Configurations:** Added high end graphics on single socket Tower 5810
- **Enabling:** Consumer graphics cards with supplementary power connectors on top
- **Acoustics:** Quieter operations without sacrificing performance, up to 49% quieter
- **Software:** New Dell Precision Optimizer enables even higher application performance



Access new technology **faster than ever**

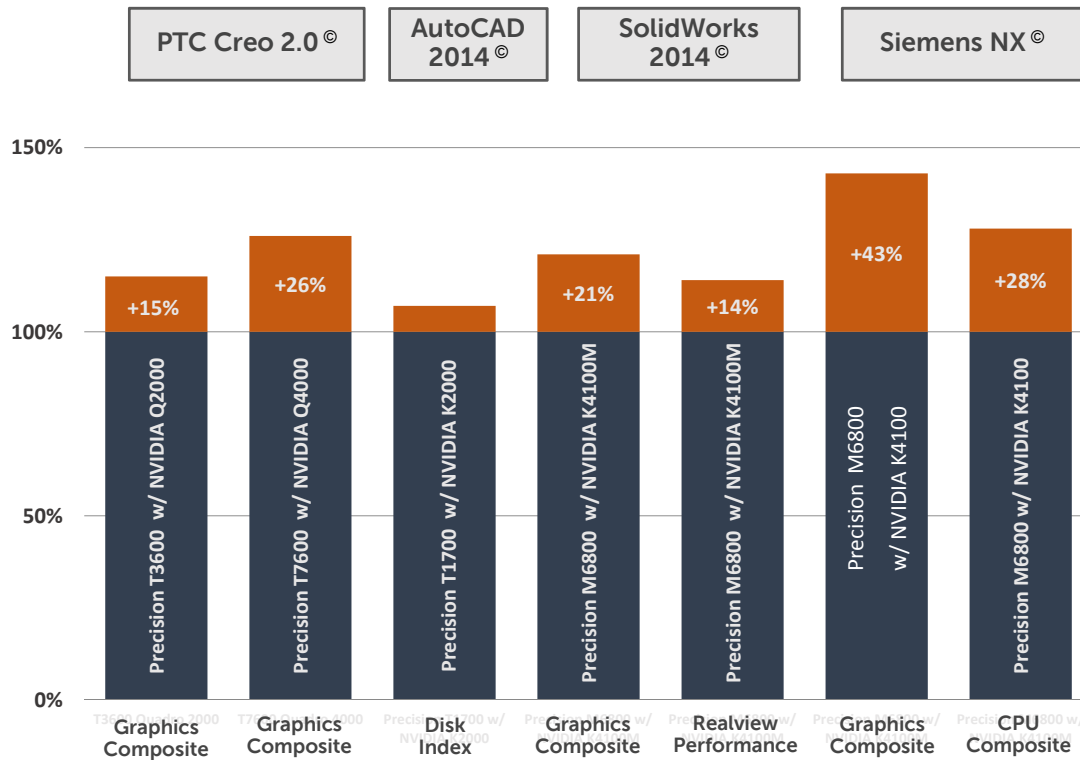
- Working closer with partners to qualify, test & support software sooner
- **80%** of Independent Software Vendor (ISV) certifications **at-launch**
- **90%** of Independent Software Vendor (ISV) certifications by October



Including:



Dell Precision Optimizer enhances application productivity with **Dynamic system tuning**



Dell Precision Optimizer

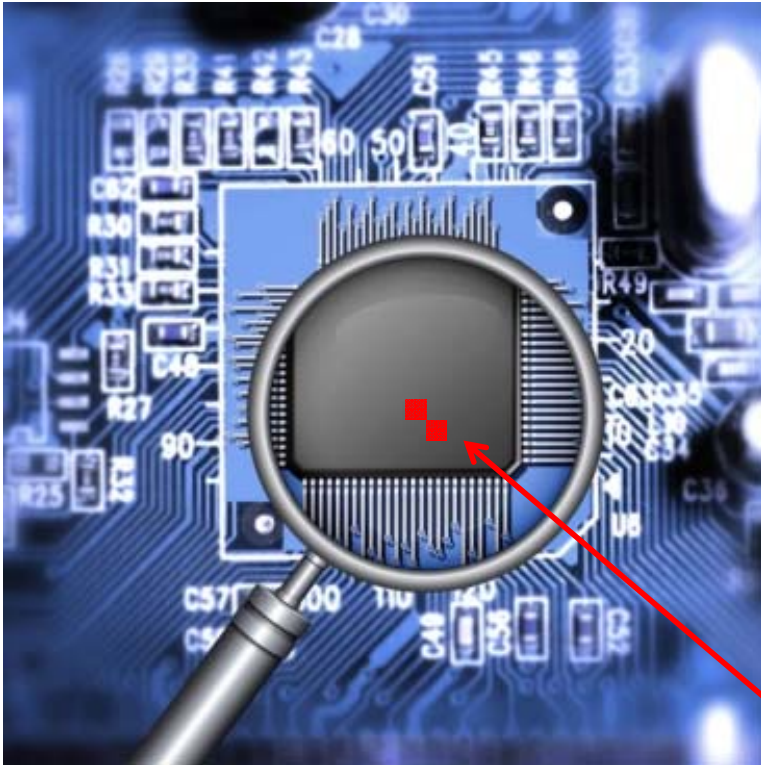
- Included with your Dell Precision workstation
- Performance profiles automatically adjust Intel® Hyper-Threading, # of CPU cores, as well as graphics, and power settings
- Custom-built profiles for your application's workload
- Works in the background
- Provides system utilization tracking and reporting
- Enables updates of drivers, software and firmware

* Test results are a weighted geometric mean of optimized configuration samples, compared to factory-installed default settings.

** Benchmarks are industry standard applications using SPEC committee and other industry standard benchmarks.



Maximize uptime- Dell Reliable Memory Technology



- Exclusive, Dell patented technology
- Responds to memory errors preventing reoccurrences
- Extends memory life
- Notifies you of memory errors before the DIMM is unusable
- Reduces down time
- Makes troubleshooting easier

With Dell RMT – The bad memory bit is mapped out, so the DIMM can still be used

Without Dell RMT – Bad memory is still present, leaving your system vulnerable to blue screens or requiring resources to replace

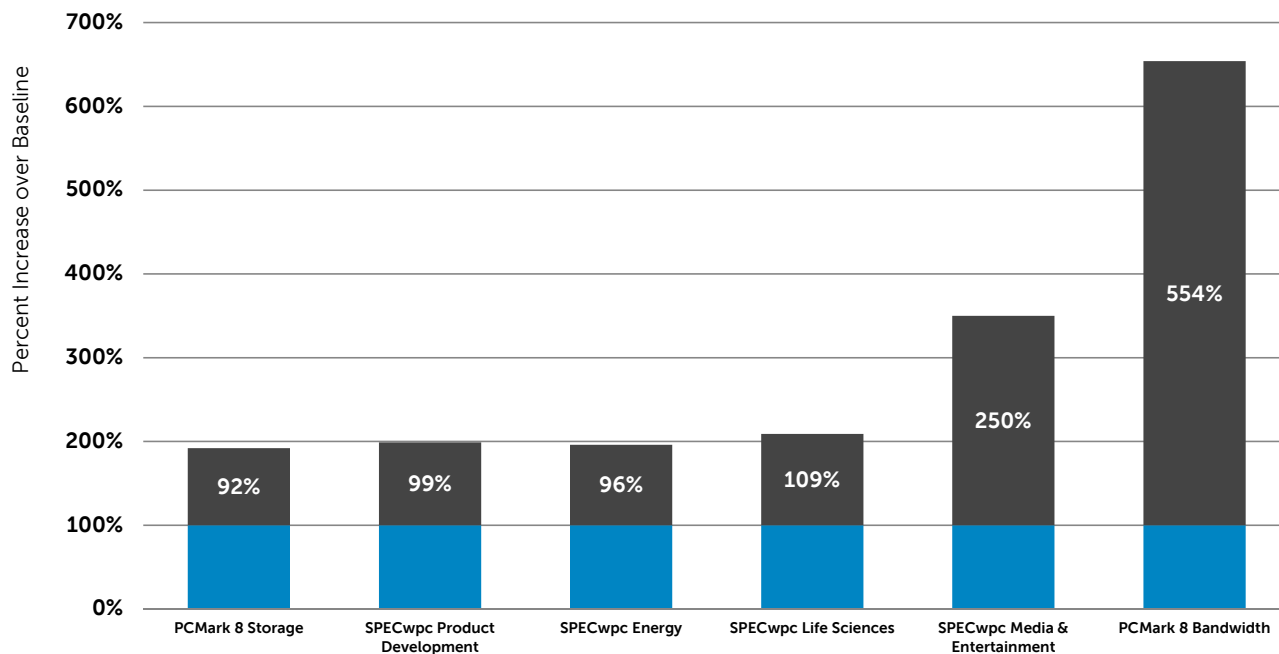
Supported on the T7610, T5610 and T3610 and R7610 with ECC memory

Dell - Internal Use - Confidential



Eliminate the bottleneck you never knew you had: Intel CAS-W

Increased Storage Performance with CAS-W



- **Exclusive** Dell Software
- Cache acceleration software for workstations
- Gives large capacity, rotating disk drive high performance up to & exceeding, SSD

*T3610 with Xeon E5-1650 v2, 64GB memory (4x16GB), 500GB 7200RPM SATAIII boot drive, 128GB cache drive, CAS-W build 10301-2017



What happens next?

- Visit the Precision booth
- Mats Olsson's Special interest group, 13.15 in Poseidon

*T3610 with Xeon E5-1650 v2, 64GB memory (4x16GB), 500GB 7200RPM SATAIII boot drive, 128GB cache drive, CAS-W build 10301-2017



ありがとう

dalu

obrigado

谢谢

शुक्रिया

gracias

Thank You!

salamat

dank u

감사합니다

see

Bienvenue

GRAZIE

merci

tack

Спасибо

teşekkür ederim

