

# Equity from the start

Dr Russell Wills  
Children's Commissioner

Public Health Association Annual Conference  
Parliament 3 September 2012

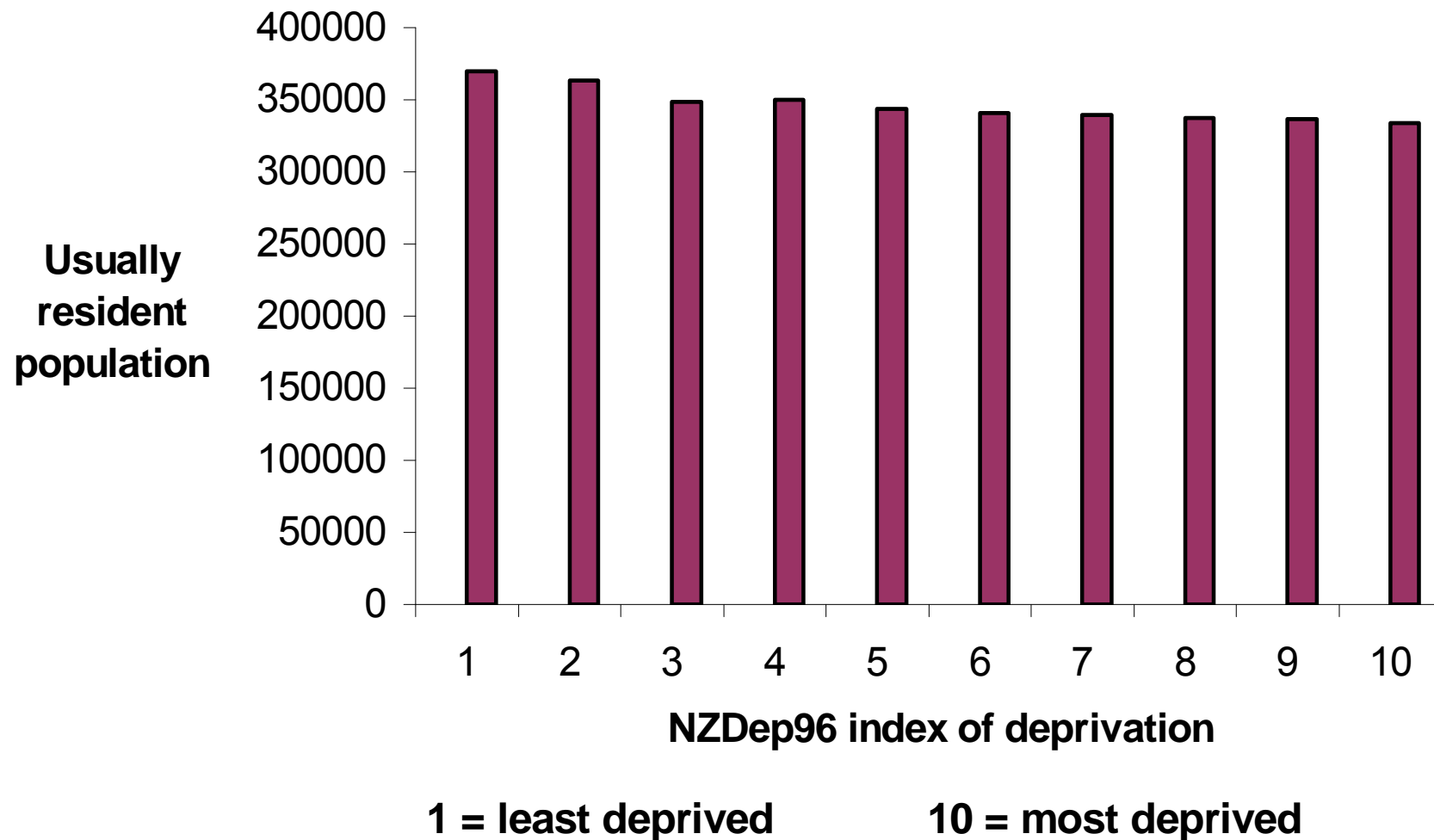


# This talk

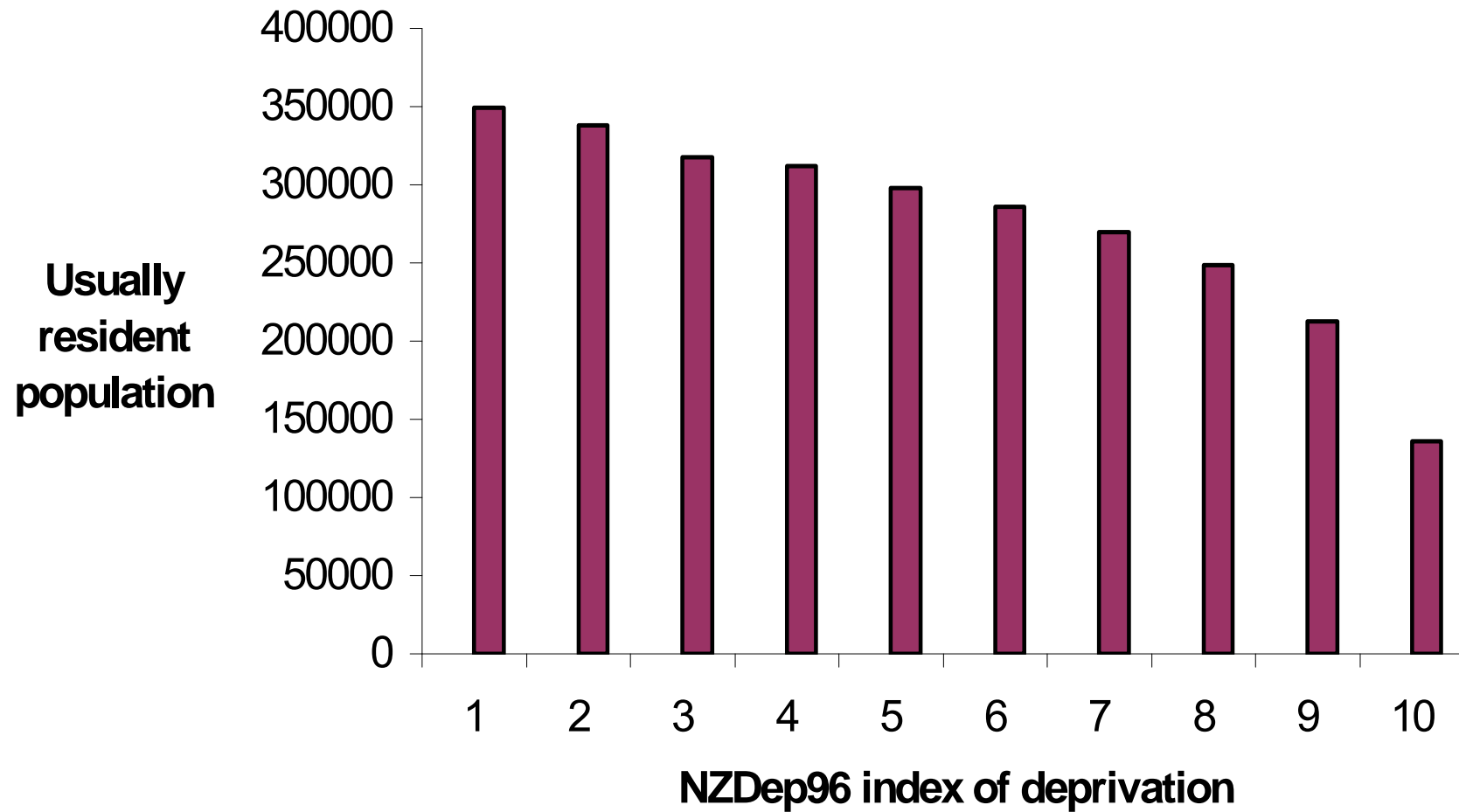
- The state of the nation's children
- Constraints
- Wicked problems
- Common features of effective solutions to wicked problems

# State of the nation's children

# Deprivation profile NZ



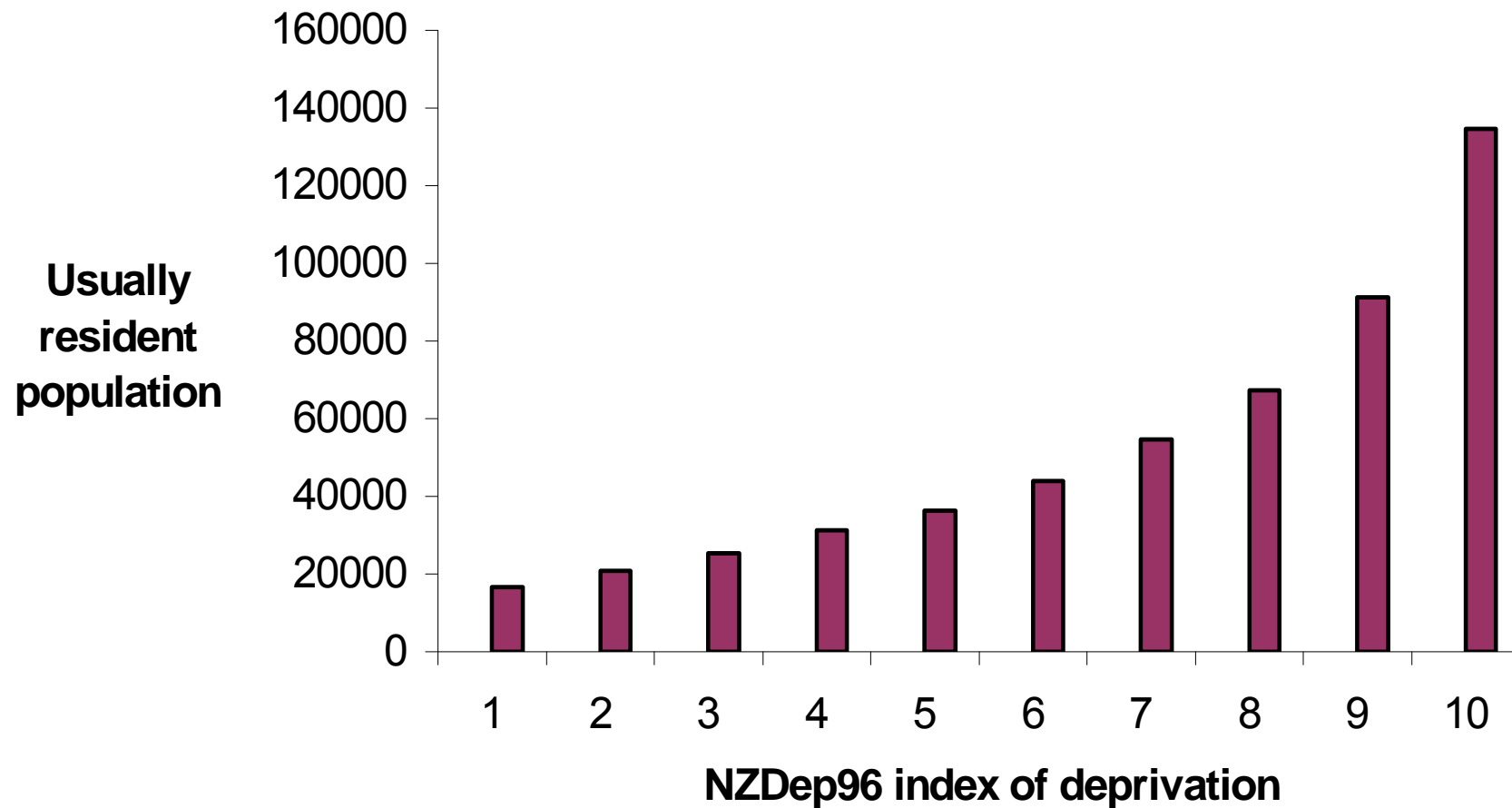
# Deprivation profile European and other



**1 = least deprived**

**10 = most deprived**

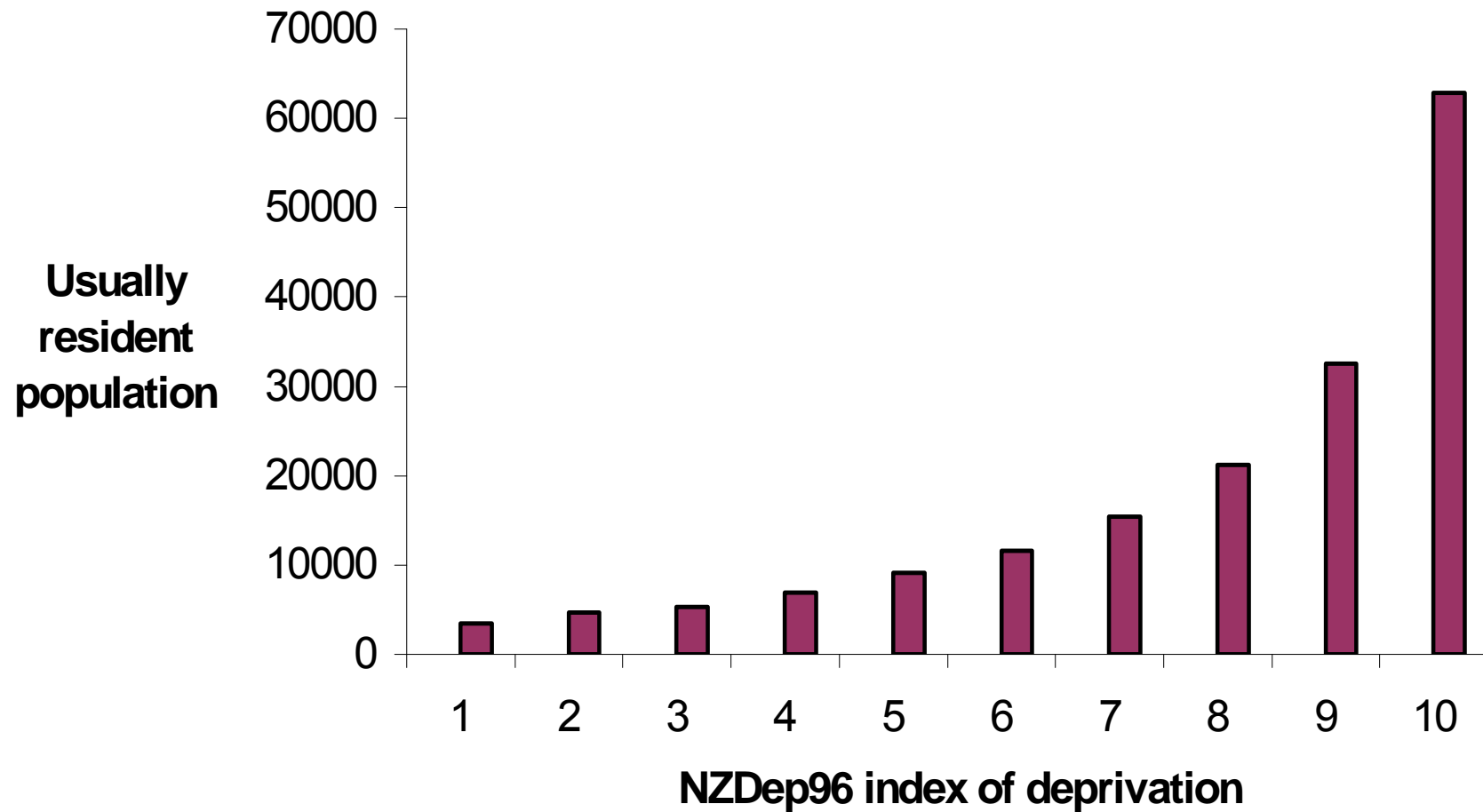
# Deprivation profile Maori



**1 = least deprived**

**10 = most deprived**

# Deprivation profile Pacific



**1 = least deprived**

**10 = most deprived**

# Children 0–17 Years Below 60% Income Threshold by Number of Children in Household, New Zealand 1984–2010

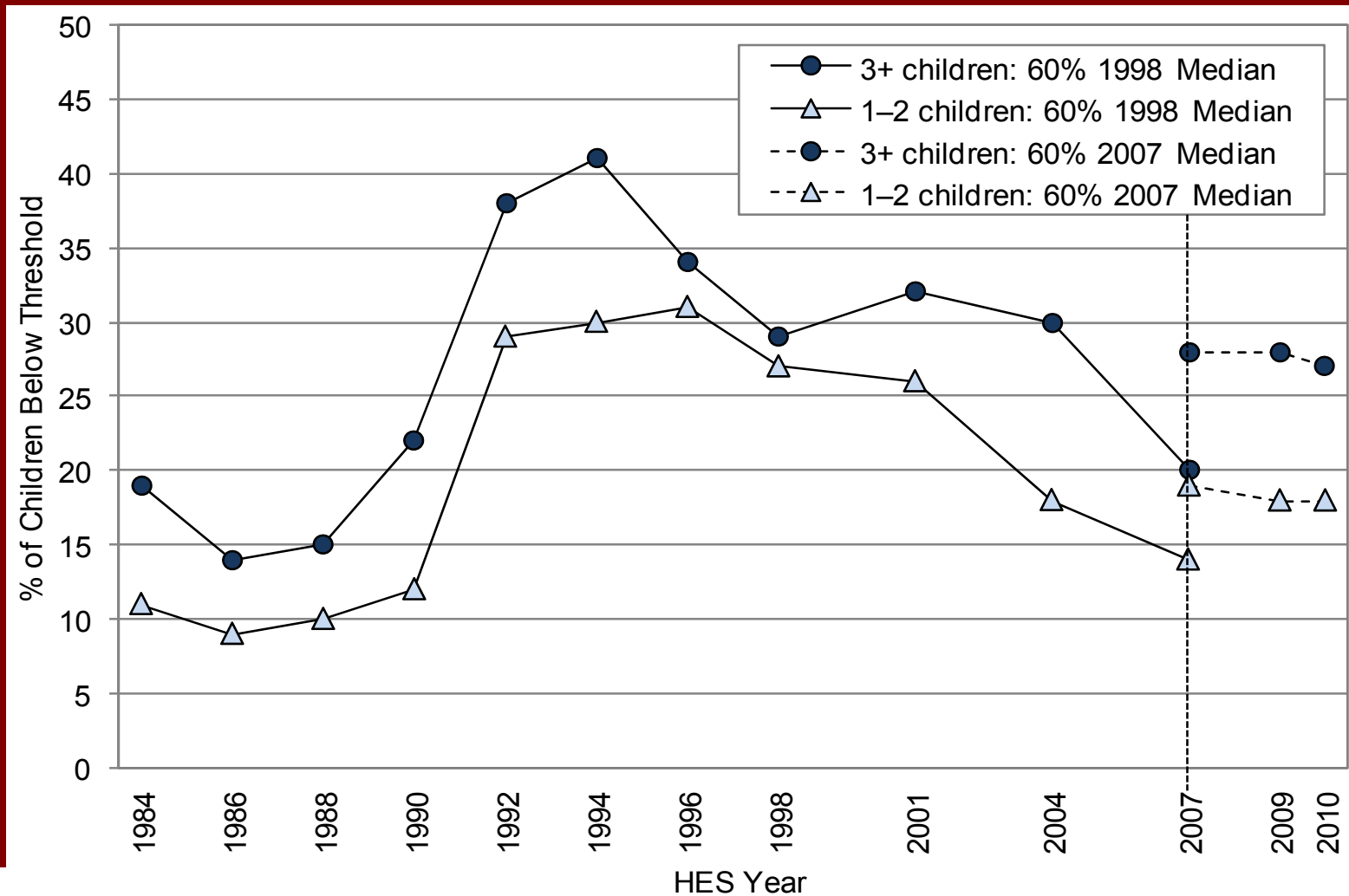




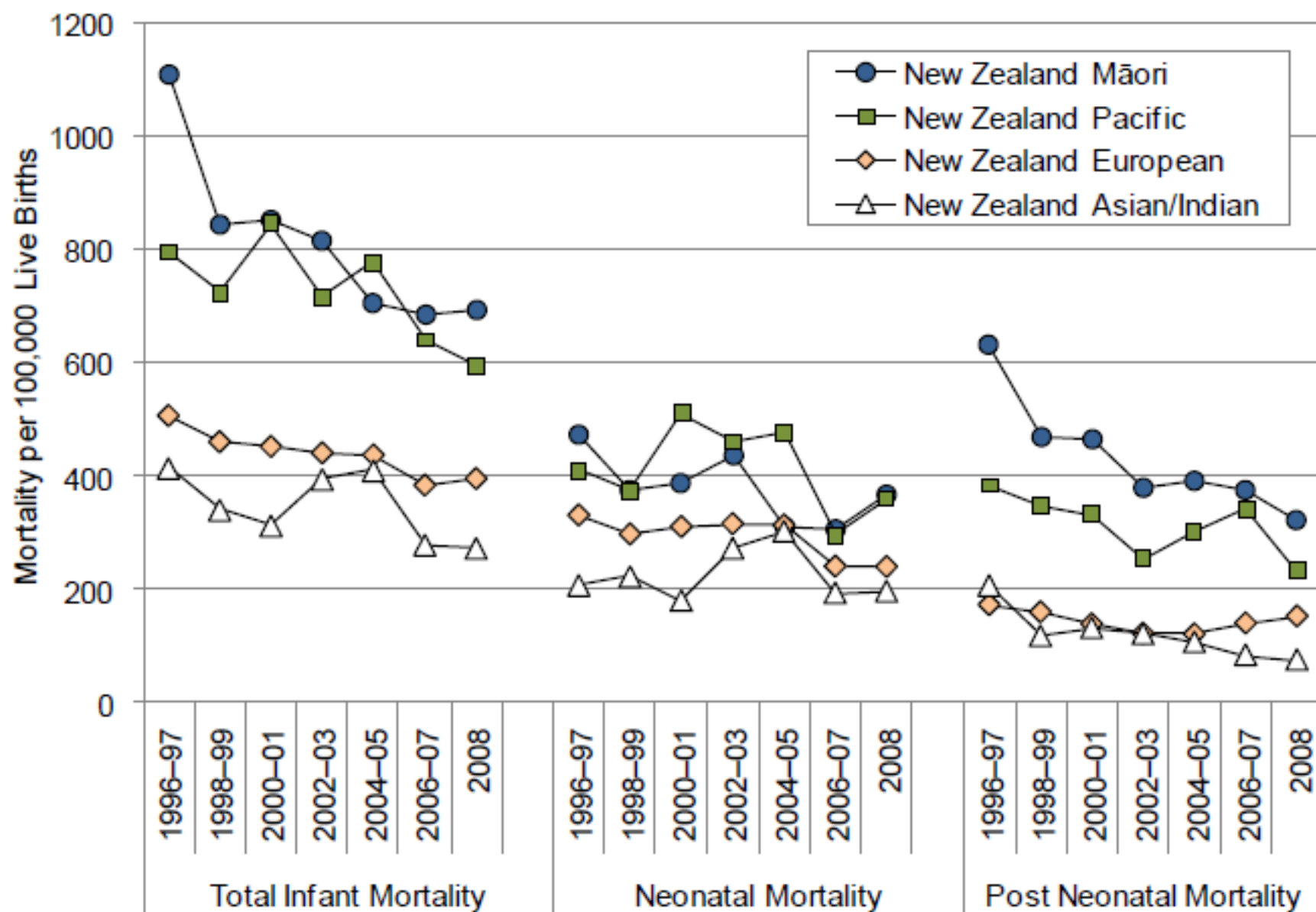
Table 75. Constraints on Children's Consumption by their Family's Standard of Living, New Zealand Living Standards Survey 2004

Category	Severe Hardship (Level 1)	Some Hardship (Level 3)	Good / Very Good Living Standards (Level 6 & 7)
<b>Items Not Obtained / Not Participated in Because of Cost (% of Respondents)</b>			
Suitable Wet Weather Clothing for Each Child	51	13	2
A Pair of Shoes in Good Condition	35	5	0
Child's Bike	45	10	1
Play Station or Xbox	37	10	1
Personal Computer	55	23	1
Internet Access'	51	23	0
Pay for Childcare	35	15	2
Have Child's Friends Over for a Meal	38	6	0
Enough Room for Child's Friends to Stay the Night	35	9	0
Have Child's Friends to a Birthday Party	34	11	1
<b>Items of Consumption Cut Back on (a Little or a Lot) Because of Cost (% of Respondents)</b>			
Not Gone on School Outings	66	26	0
Not Brought School Books / Supplies	49	19	0
Not Brought Books for Home	61	33	1
Postponed Child's Visit to Doctor Because of Cost	46	20	1
Postponed Child's Visit to Dentist Because of Cost	36	20	1
Child Went Without Glasses	15	10	0
Child Went Without Cultural Lessons	55	40	4
Child's Involvement in Sports Limited	66	40	1
Child Wore Poorly Fitting Clothes or Shoes	65	33	1
Children Share a Bed	40	7	0
Limited Space for Child to Study or Play	72	34	1

Source: NZ Living Standards Survey [190].

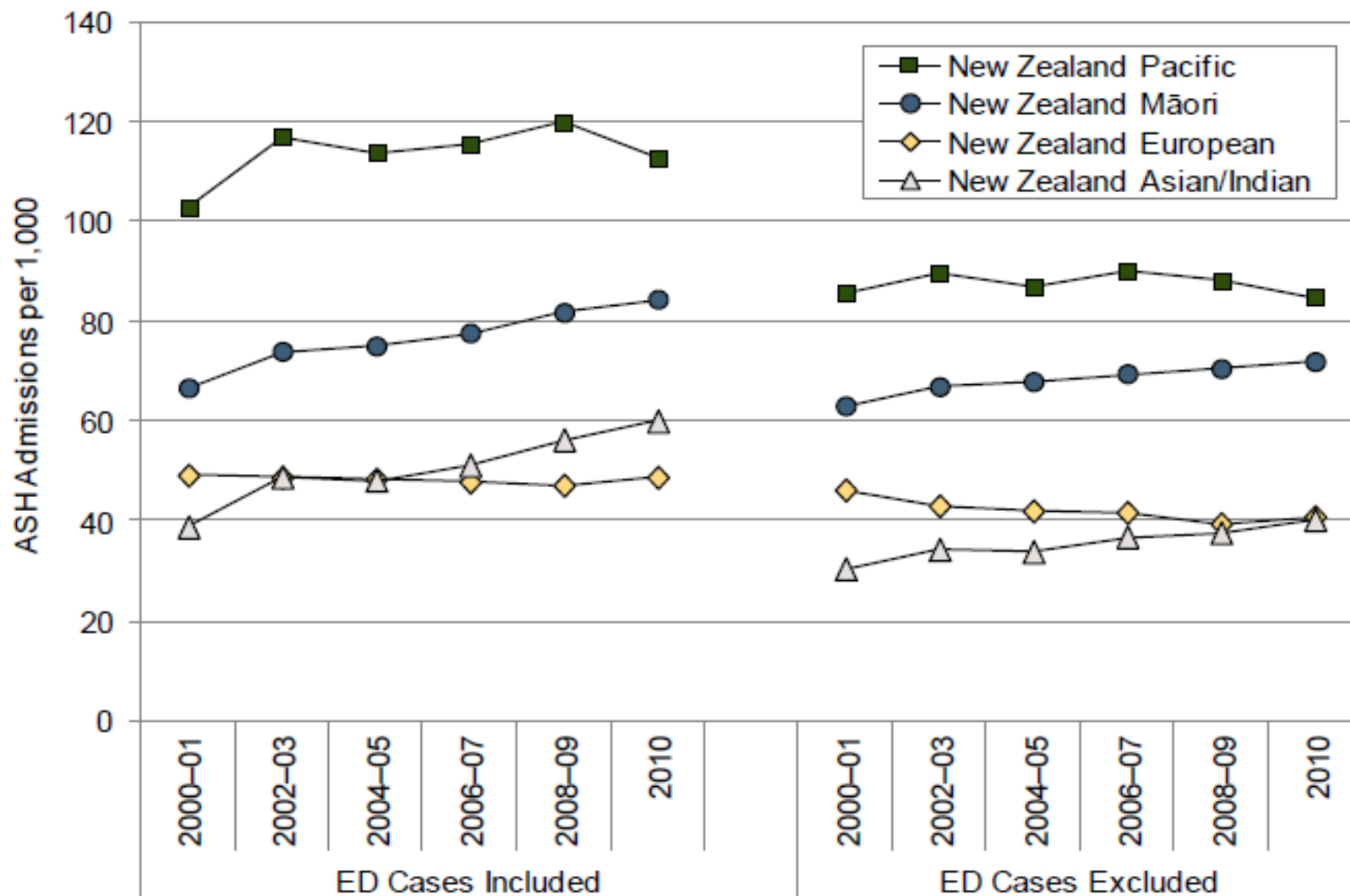
**What effect has this had on  
outcomes for children?**

Figure 9. Total Infant, Neonatal and Post Neonatal Mortality by Ethnicity, New Zealand 1996–2008



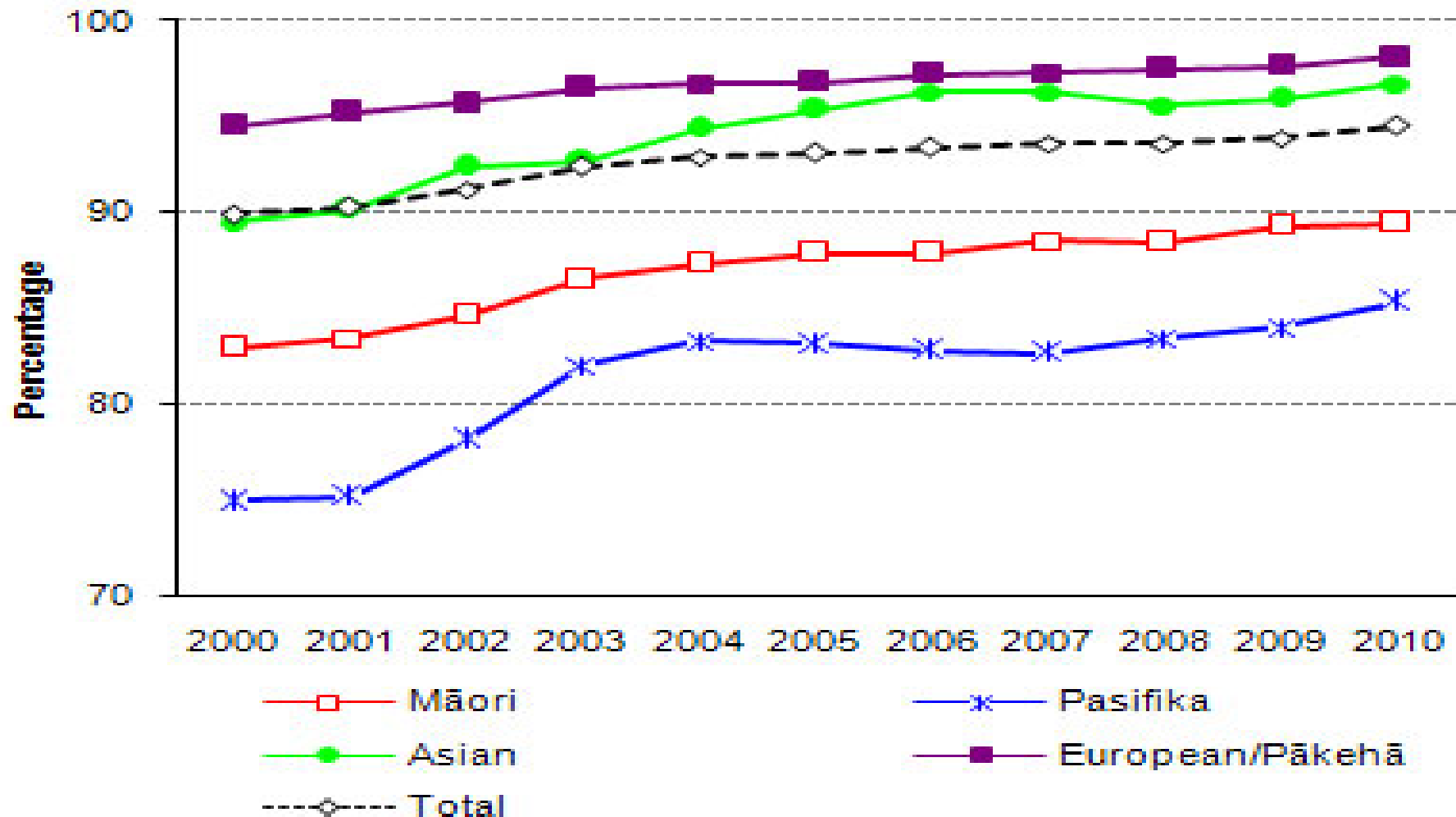
Source: Numerator: National Mortality Collection; Denominator: Birth Registration Dataset; Note: Ethnicity is Level 1 Prioritised

Figure 24. Ambulatory Sensitive Hospitalisations in Children Aged 0–4 Years by Ethnicity, New Zealand 2000–2010



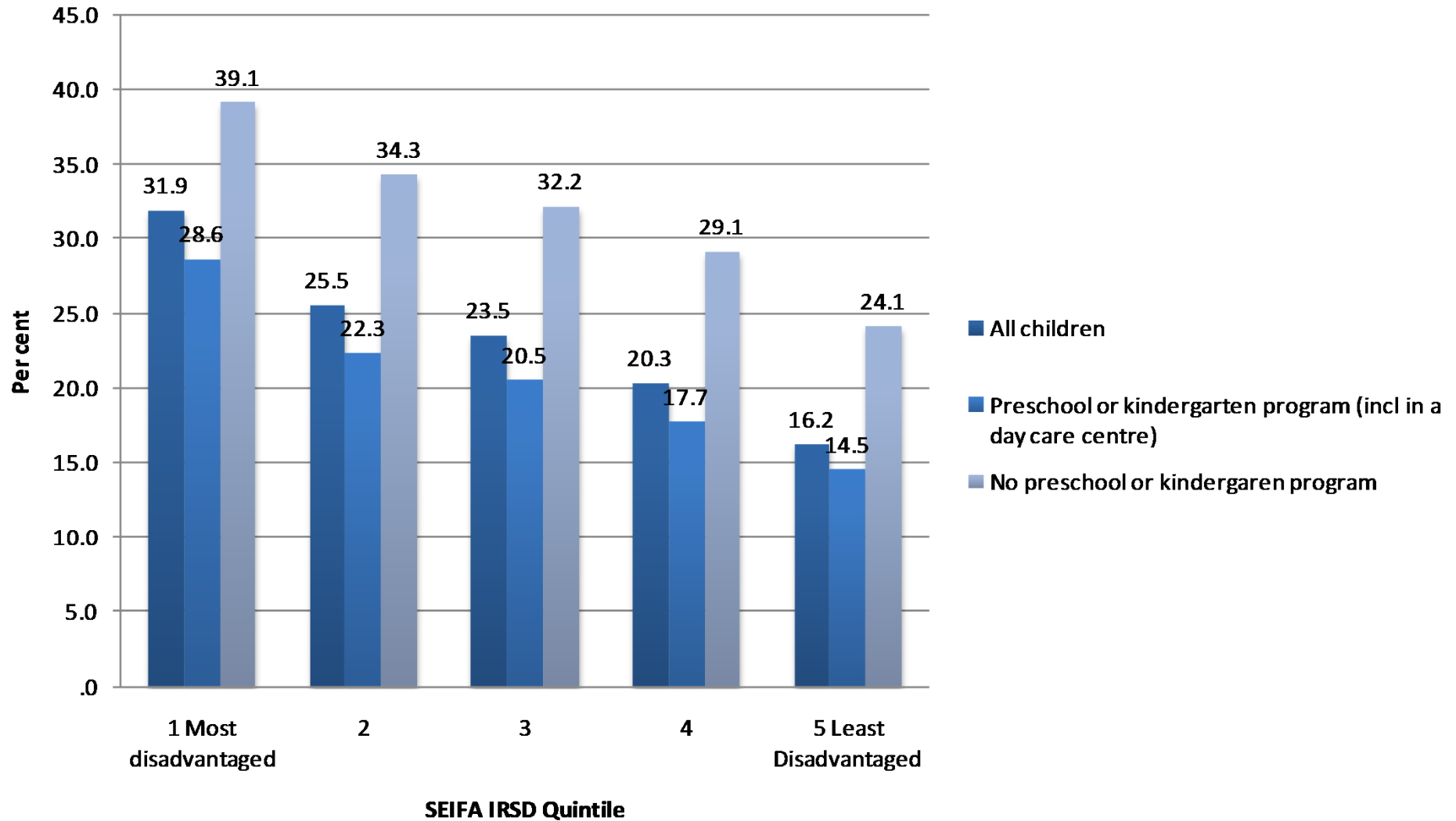
Source: Numerator: National Minimum Dataset (Acute and semi-acute admissions only, Neonates excluded); Denominator: Statistics NZ Estimated Resident Population; Note: Ethnicity is Level 1 Prioritised

# Early childhood education enrolment NZ 2000-2010

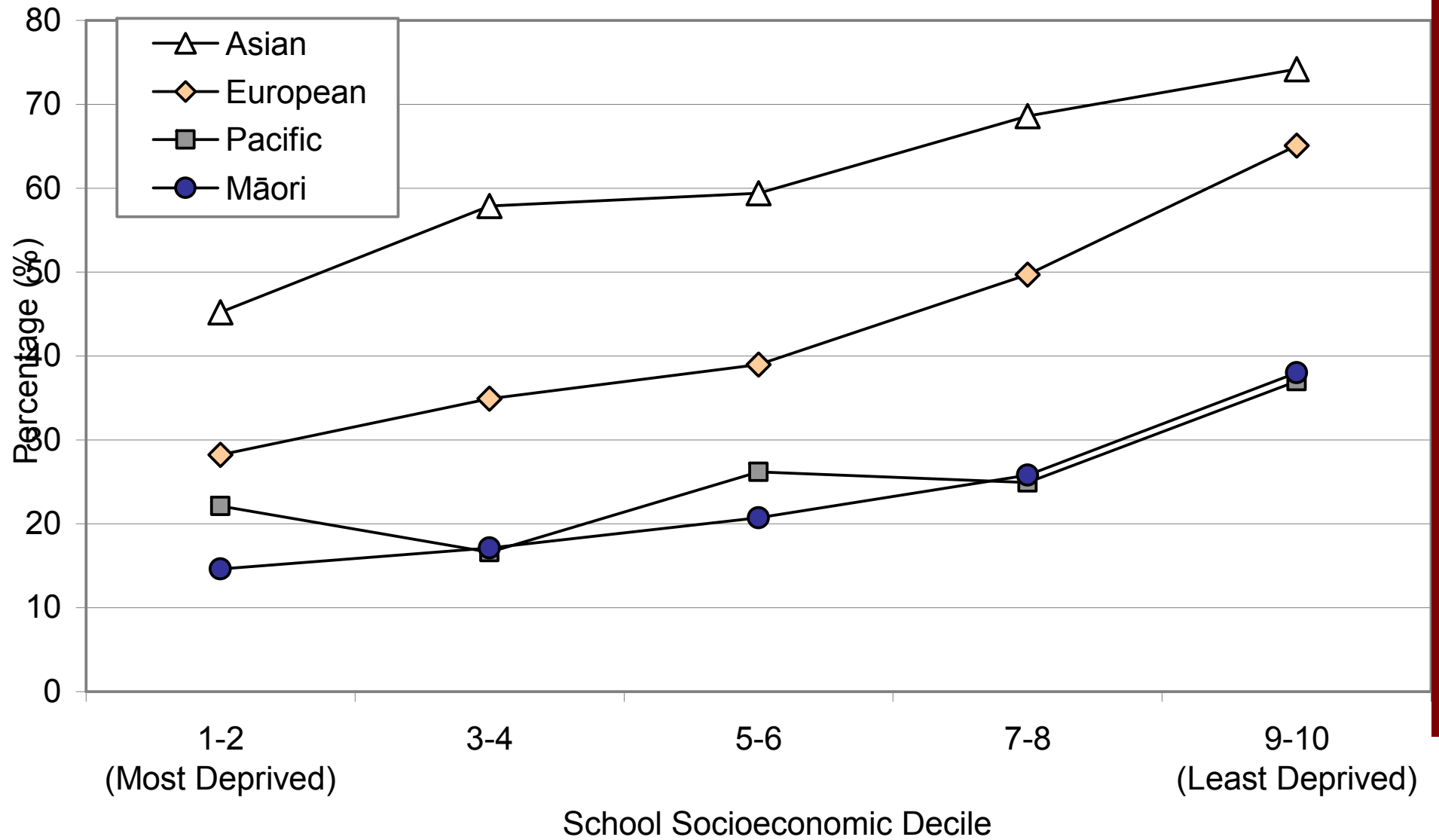


# Ready for school?

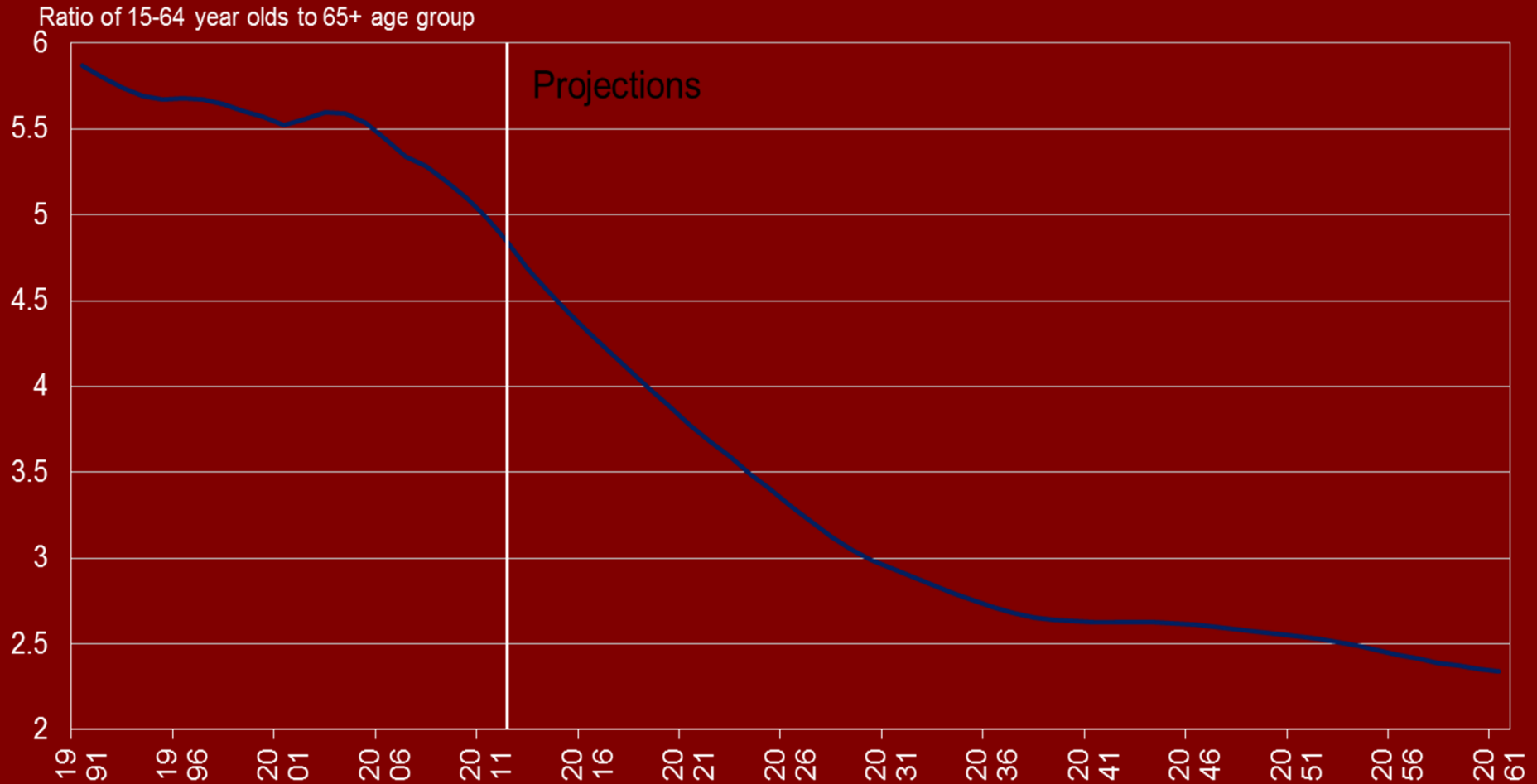
## Developmentally vulnerable on one or more AEDI domain



Attainment of University Entrance Standard by School Leavers by Ethnic Group and School Socioeconomic Decile, New Zealand 2008



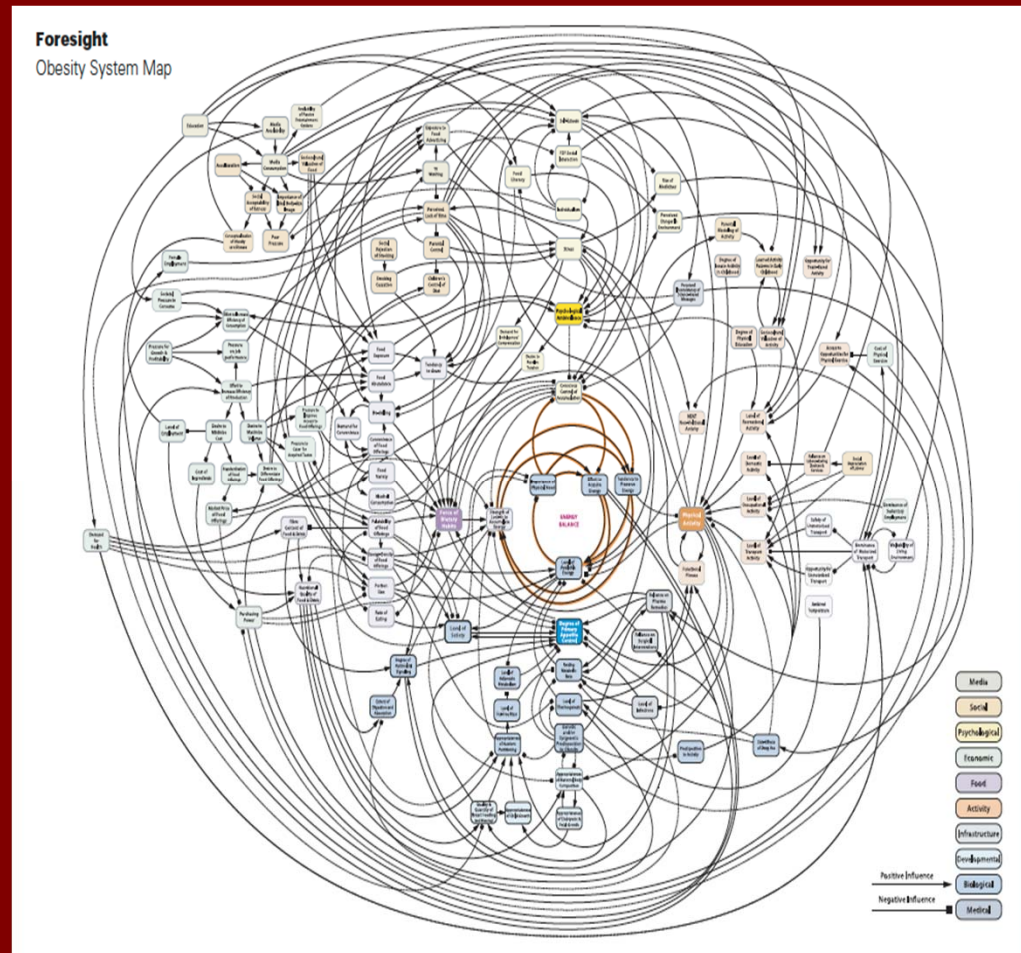
# NZ Population Age Structure





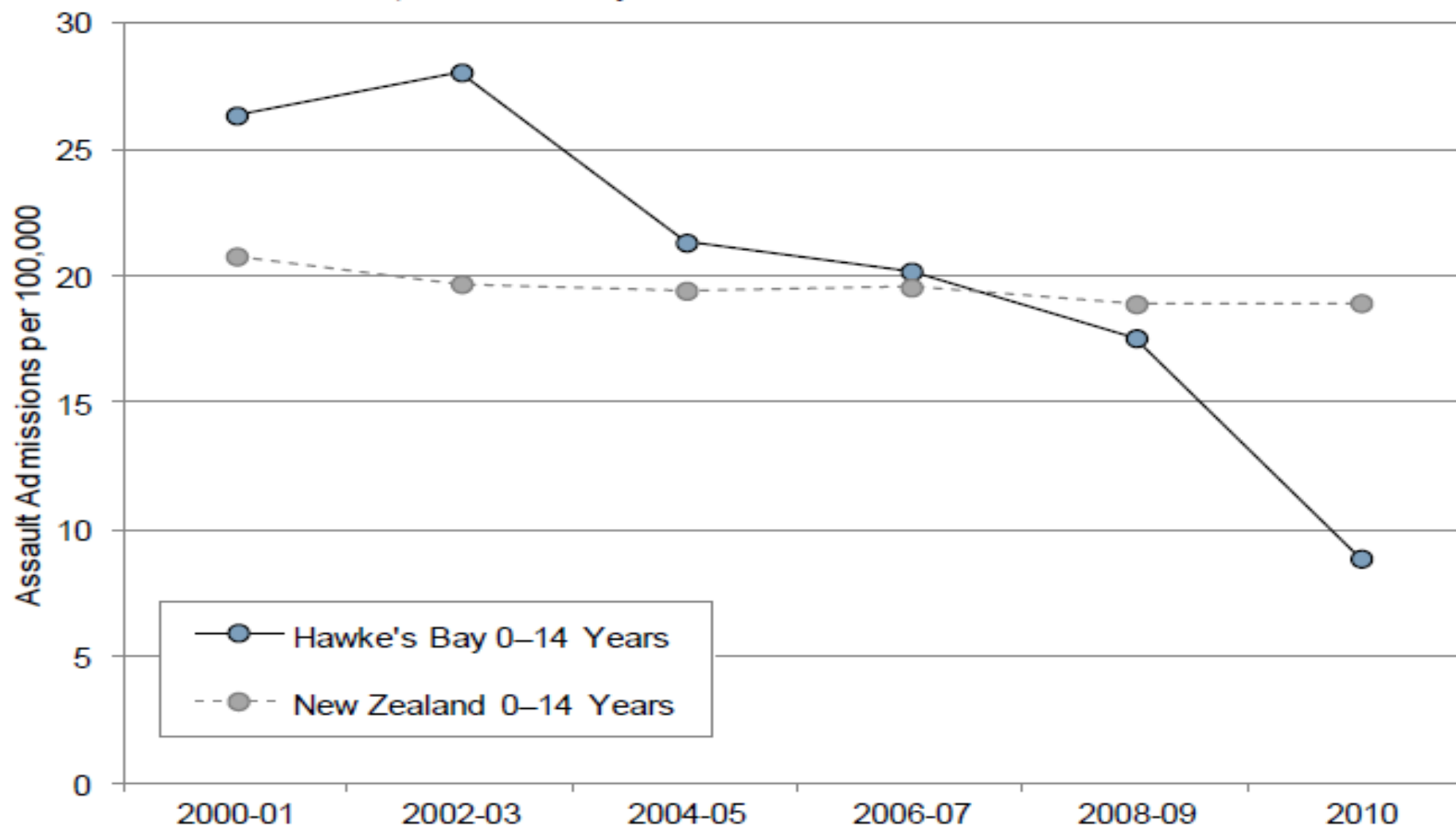
# Wicked problems

- Multiple causes
- Multiple players
- High stakes
- Environment of constant change
- Uncertain funding
- Evidence unclear or conflicting
- Values-laden
- Competing interests



# Wicked problems have solutions

Figure 177. Hospital Admissions for Injuries Arising from the Assault, Neglect or Maltreatment of Children, Hawke's Bay vs. New Zealand 2000–2010



Source: Numerator: National Minimum Dataset; Denominator: Statistics NZ Estimated Resident Population

# Wicked problems tackled in child health 2000-2012

- Family Violence
- Antenatal child abuse and neglect risk
- Early onset conduct disorder
- Autism
- Foetal alcohol spectrum disorder
- SUDI, Acute rheumatic fever
- Immunisations
- CYF caregiver support
- Asthma, smoking cessation...

# Common features of effective solutions to wicked problems

- Shared values
- Leadership
- Evidence-based interventions
- Stringent fidelity requirements
- Intersectoral collaboration
- Time set aside to meet
- Clearly stated objectives
- Monitoring in real time of meaningful KPIs
- Independent evaluation