

Broken Escalator: Gathering Systemic Troubles In 21st Century America

Nicholas Eberstadt

Henry Wendt Chair in Political Economy

American Enterprise Institute

eberstadt@aei.org

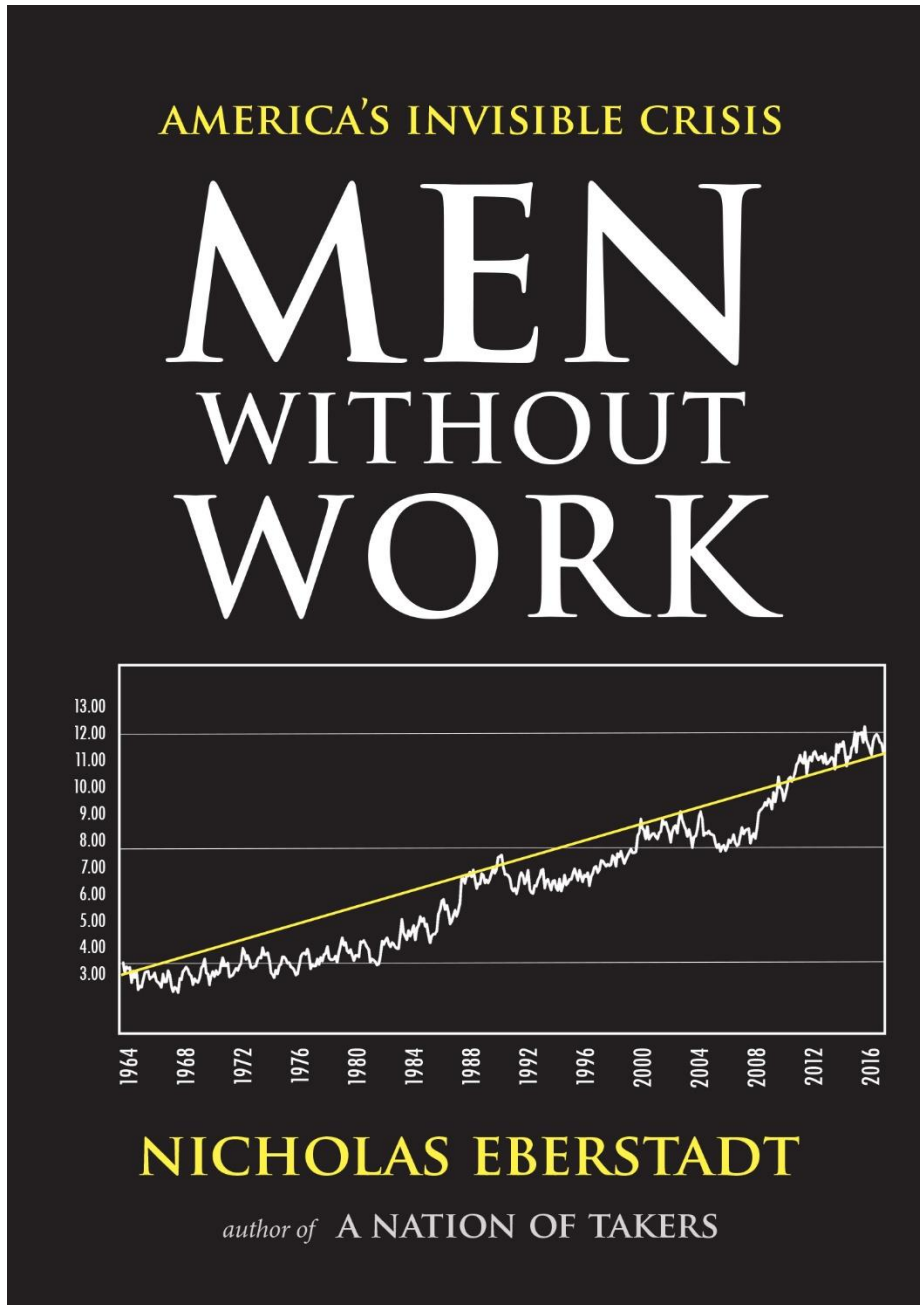
Associated General Contractors of America

National Chapter Leadership Conference

Washington DC

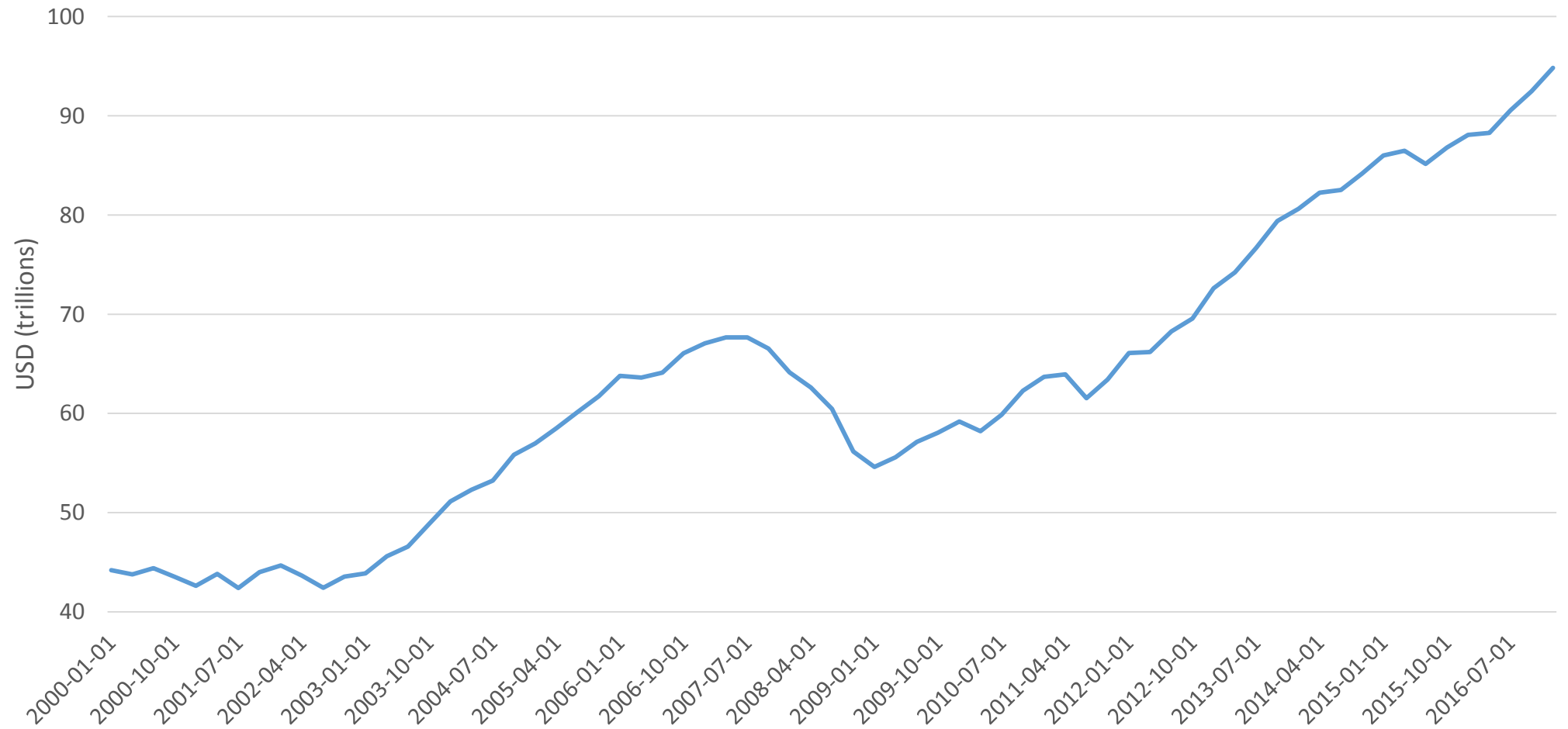
September 25, 2017

Copyright Nicholas Eberstadt



“Mission Accomplished”?

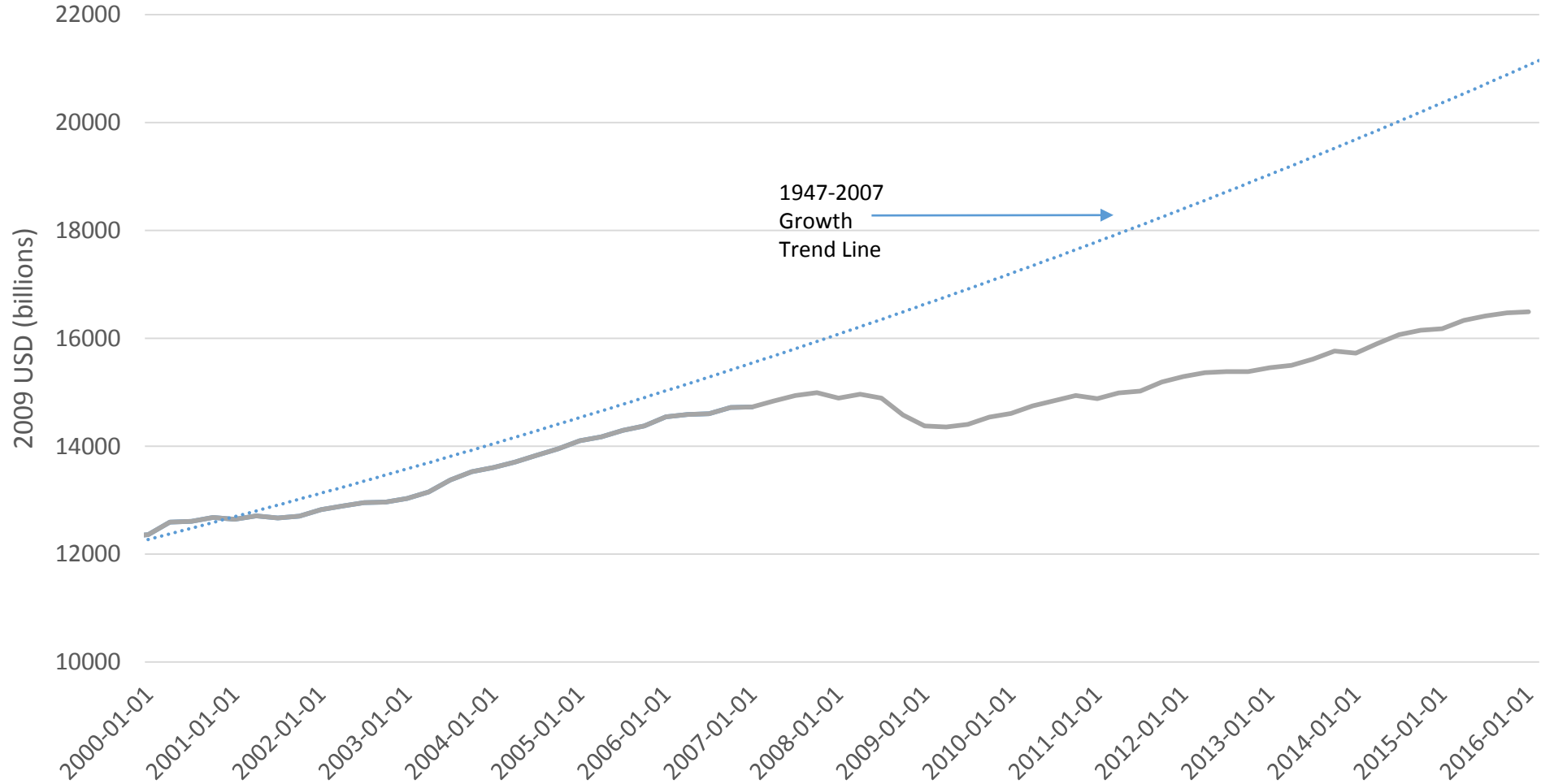
USA: Households and Nonprofit Net Worth, quarterly,
2000-2017 (trillions of current US dollars)



Copyright Nicholas Eberstadt

The Big Slowdown...

Real (2009 USD) GDP, quarterly, 2000-2016
(exponential trend-line 1947-2007)



Copyright Nicholas Eberstadt

...And The Crash

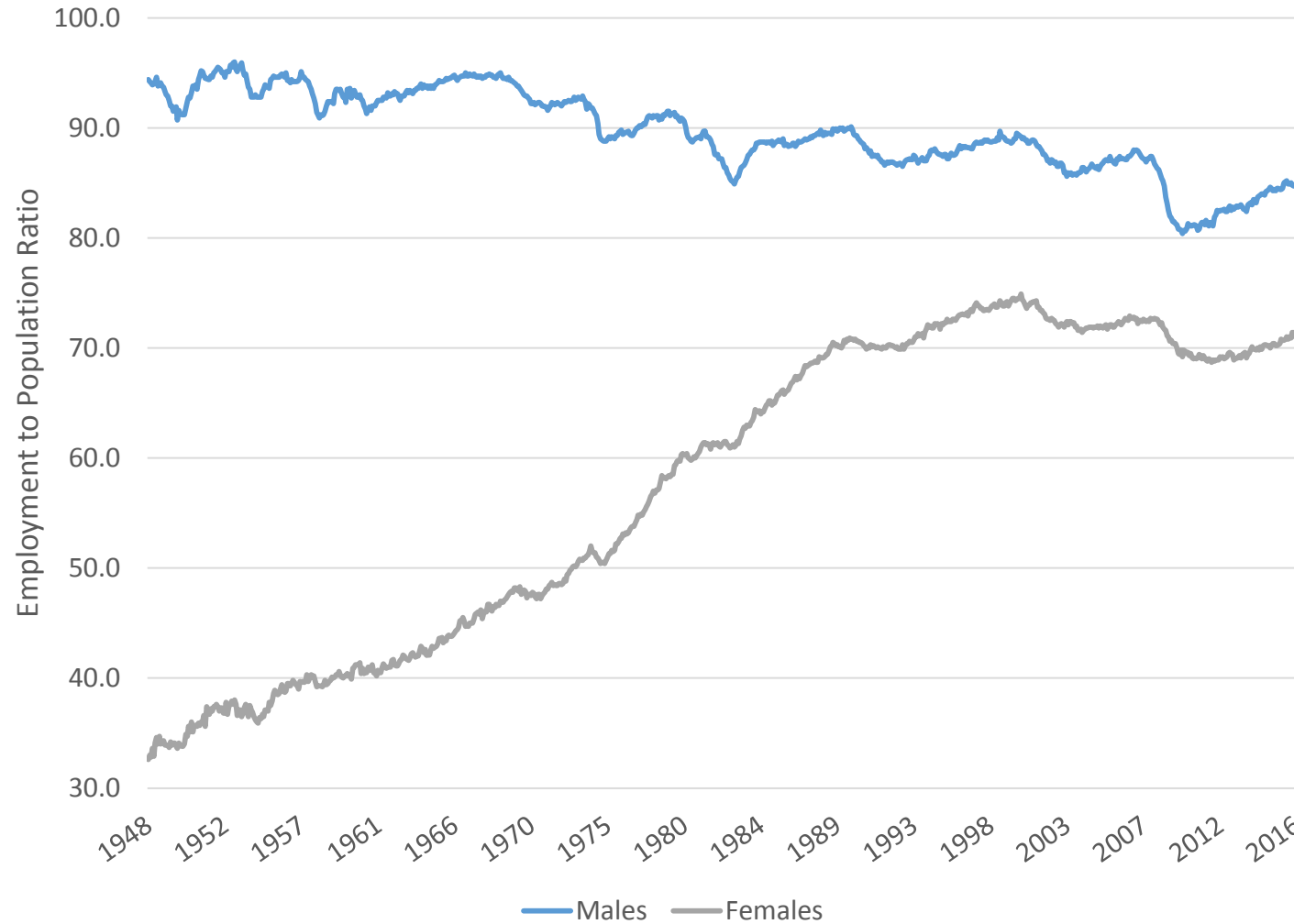
Employment to Population Ratio for 20+ Population: USA, 2000-2017
(seasonally adjusted)



Copyright Nicholas Eberstadt

Decline of the Males

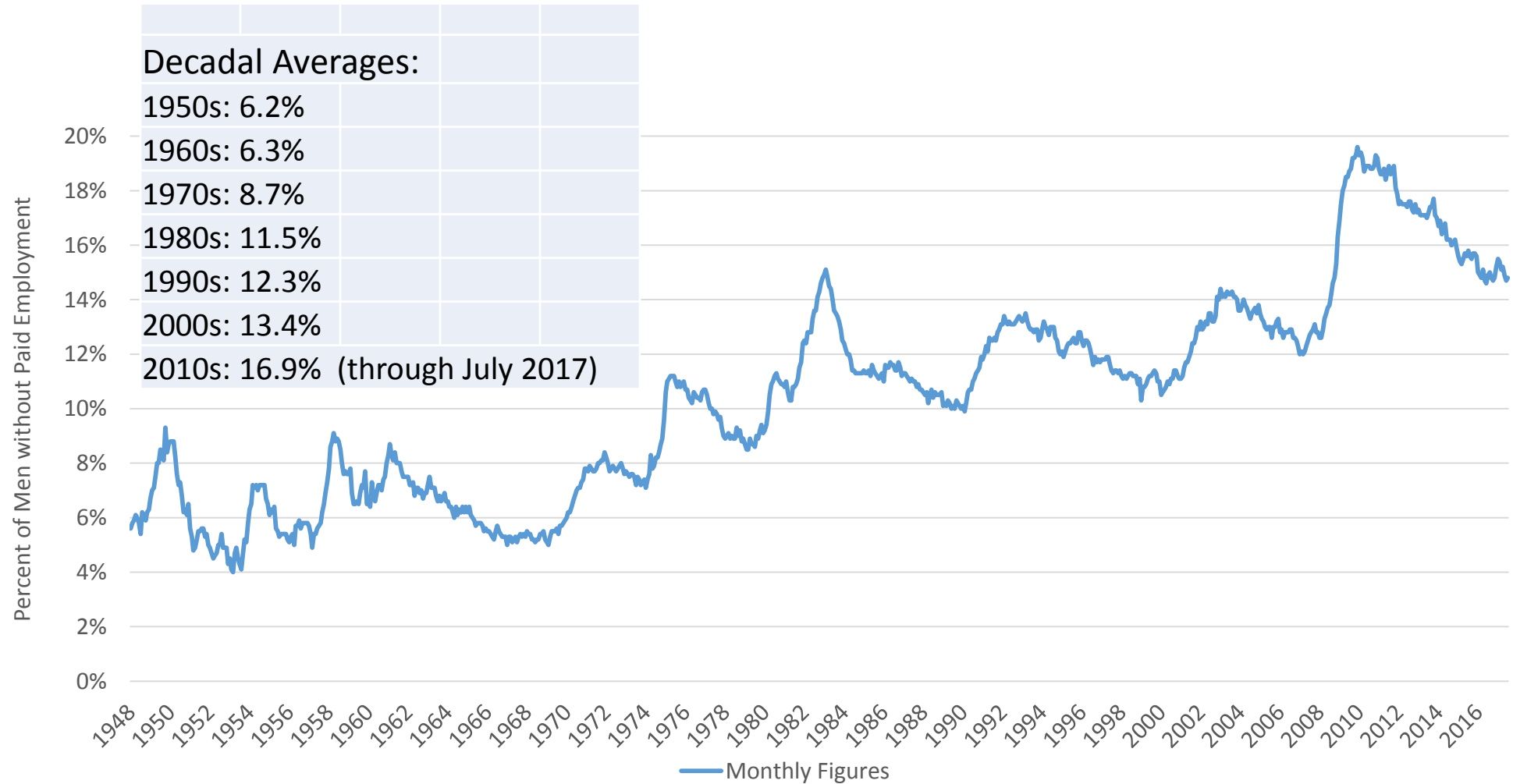
Employment to Population Ratios: Ages 25-54 by Sex, 1948-2017 (seasonally adjusted)



Copyright Nicholas Eberstadt

An Invisible Army of Men without Work

Percentage of Prime Working Age (25-54) Men Without Paid Employment:
USA 1948-2017 (Civilian Non-Institutional Population, Seasonally Adjusted)



Copyright Nicholas Eberstadt

US male “work rates”: Nowadays vs. Selected Depression years

Year and source	Employment to population ratio, men 20-64 (percentage of civilian non-institutional population)	Employment to population ratio, men 25-54 (percentage of civilian non-institutional population)
August 2017 (BLS, seas. unadj.)	80.0	85.1
1940 (Census)	81.3	86.4
1930 (Census)	88.2*	91.2*^

Notes: * = calculated for total enumerated population, not civilian non-institutional population

^ = 25-44 population—corresponding male 25/44 work ratio for 2015 would be 85.3 for civilian non-institutional population alone

Sources: For July 2017: Derived from BLS “Labor Force Statistics from Current Population Survey”, <https://www.bls.gov/web/empsit/cpseea13.htm> September 9, 2017;

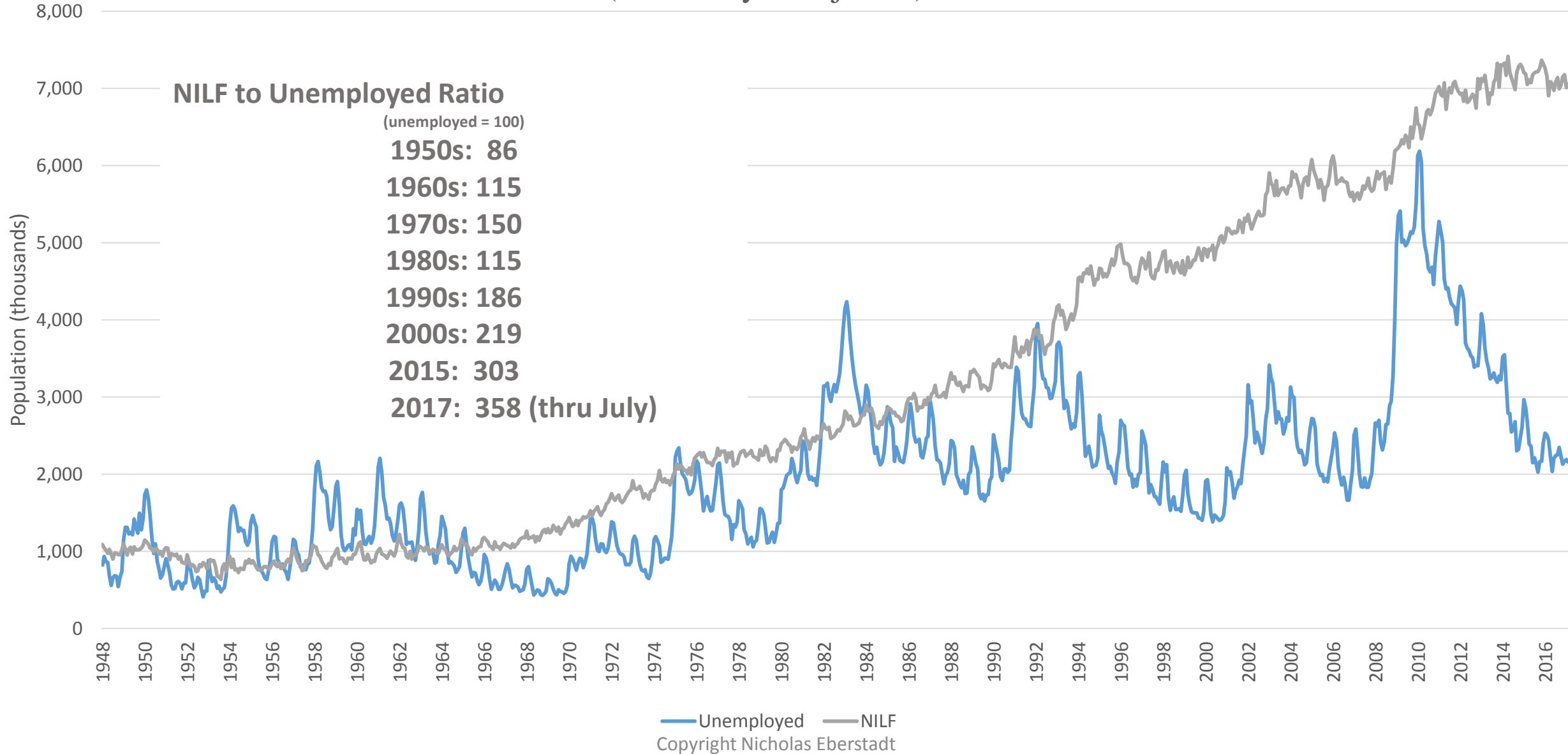
For 1940: derived from http://www.jstor.org/stable/117246?seq=1#page_scan_tab_contents ; <http://censusacn.adobeemcloud.com/library/publications/1943/dec/population-labor-force-sample.html> Table 1; <http://www2.census.gov/library/publications/decennial/1940/population-institutional-population/08520028ch2.pdf> ; <http://www.dtic.mil/dtic/tr/fulltext/u2/a954007.pdf>. Accessed August 5, 2016.

For 1930: http://digital.library.unt.edu/ark:/67531/metadc26169/m1/1/high_res_d/R40655_2009Jun19.pdf. Accessed March 2, 2016

Copyright Nicholas Eberstadt

The Great Postwar “Flight From Work” by Men

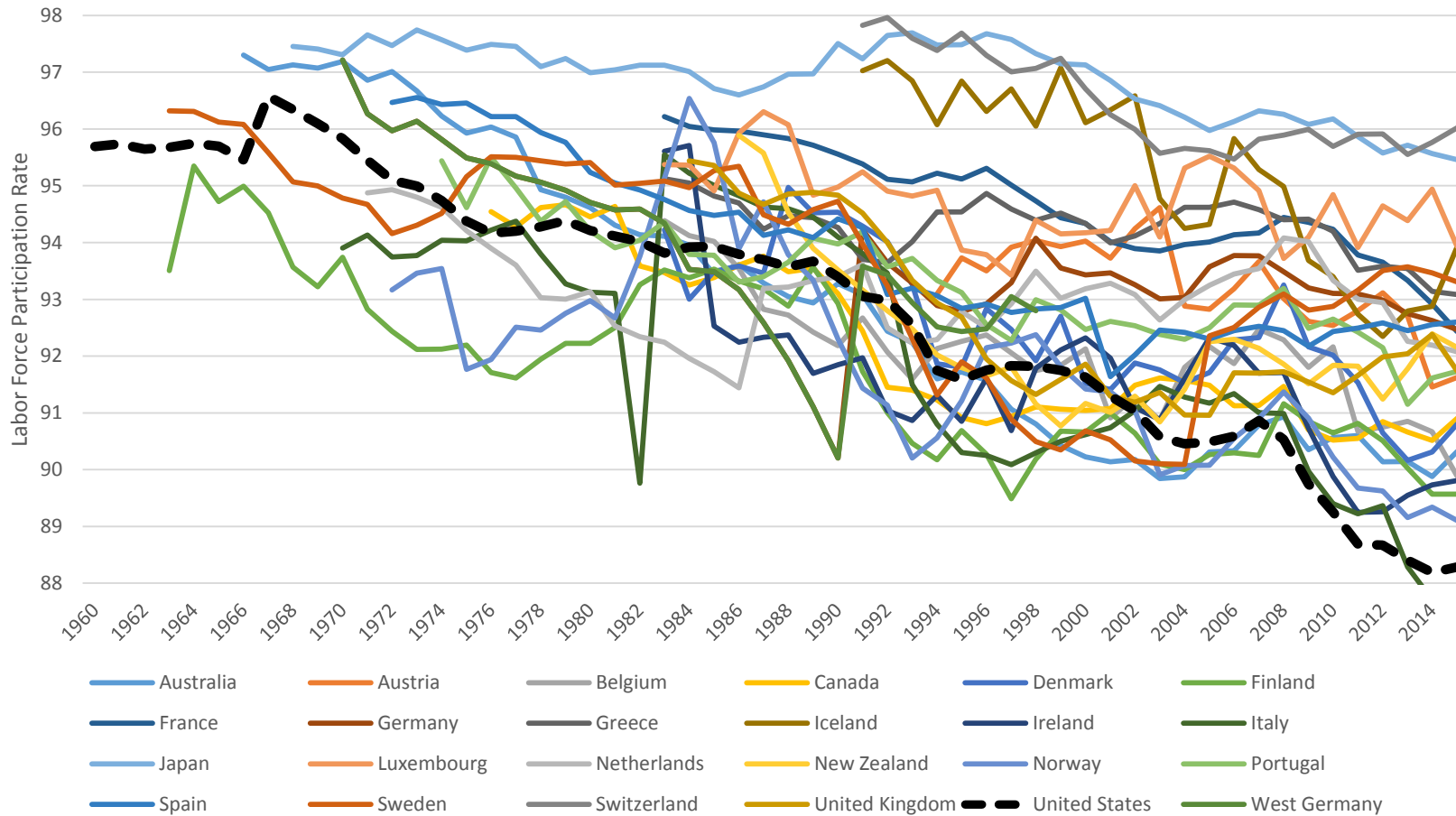
US Male 25-54 Unemployed vs. Not In Labor Force (NILF) : 1948-2017
(seasonally unadjusted)



Source: Bureau of Labor Statistics, Current Population Survey, Labor Force Statistics, LNS13000061, LNU05000061. Accessed via <http://data.bls.gov/pdq/querytool.jsp?survey=ln>. Accessed on August 15, 2017.

Race To The Bottom

Labor Force Participation Rates for Men Ages 25-54:
USA vs. 22 "Original" OECD Member States, 1960-2015



Copyright Nicholas Eberstadt

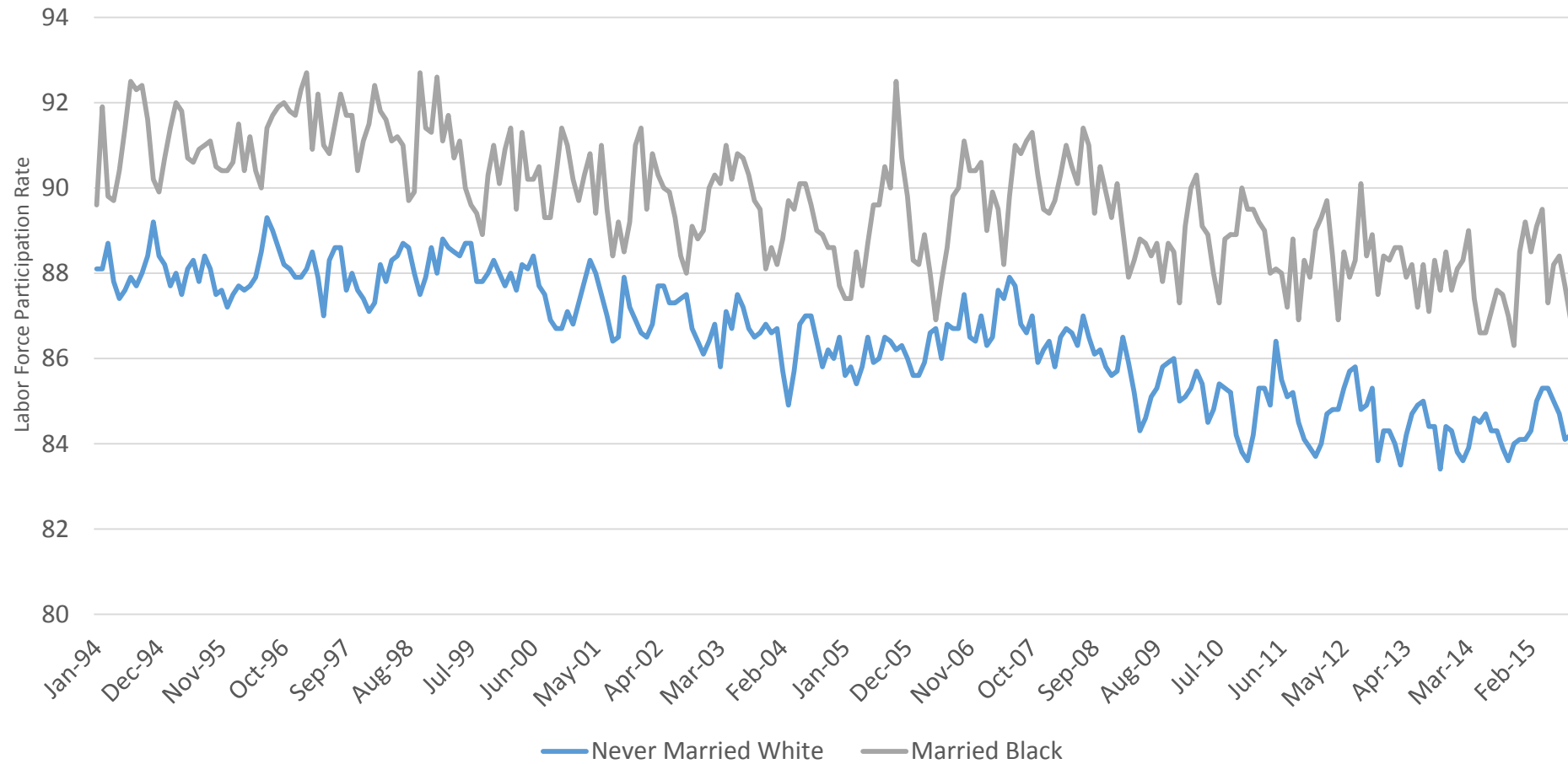
Who is more likely—and less likely—to be in the 7 million+ pool of prime age NILF men?

Relative odds by demographic characteristic: 2015 (Census CPS Microdata)

Race/ Ethnicity		Educational Attainment		Marital Status		Nativity	
Hispanic	-20%	Graduate Studies	-59%	Married	-36%	Foreign Born	-28%
Asian	-10%	Bachelors Degree	-43%	Divorced/ Separated	+41%	Native Born	+8%
“Anglo” (Non- Hispanic White)	-7%	Some College	-3%	Never Married	+48%		
Multiracial	+31%	HS Degree Only	+25%	Widowed	+116%		
Non- Hispanic Black	+71%	No HS Degree	+77%				

But Marriage Trumps Race

Labor Force Participation Rate for Men Ages 25-54 by Marital Status and Race: Married
Black vs. Never Married White



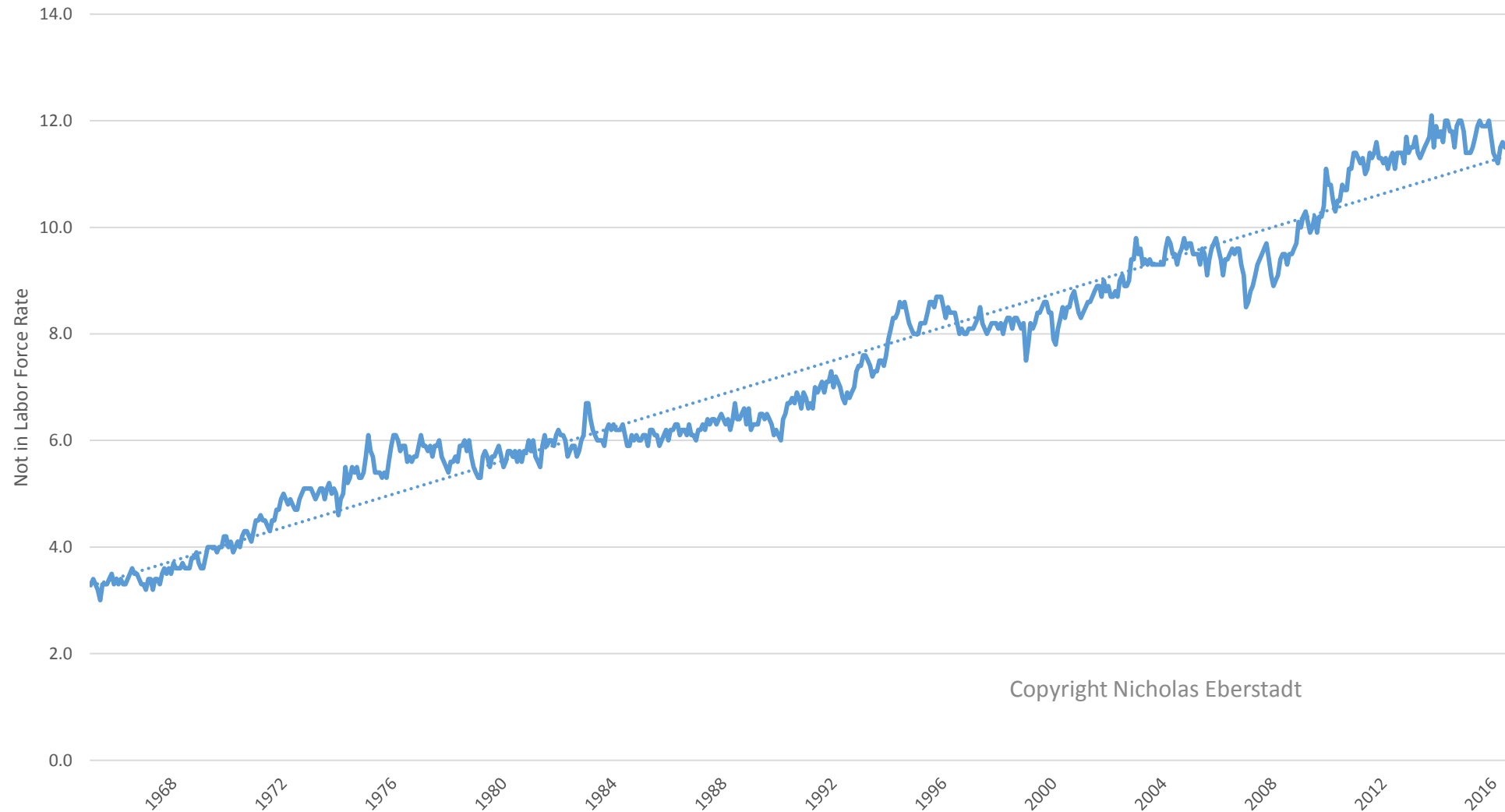
Note: Series break for Race after Dec 1995, Dec 2002, and April 2012.

Copyright Nicholas Eberstadt

Source: Bureau of Labor Statistics, Current Population Survey, January 1994-September 2015. Census Bureau, DataFerrett, Accessed October 20, 2015.

The Uncanny Regularity of the Male Flight From Work

NILF Rates for Men 25-54 Years of Age: USA, 1965-2016



Copyright Nicholas Eberstadt

Notes: Recession variables- The data used to create this figure is from the "Current Population Survey" (CPS) as was downloaded from the Bureau of Labor Statistics. The data used to create the regression table in the upper left corner is also from the "Current Population Survey" but was downloaded from IPUMS-CPS for statistical manipulation. 1 if "year" variable falls into any time during the following list of recession dates; 0 otherwise.

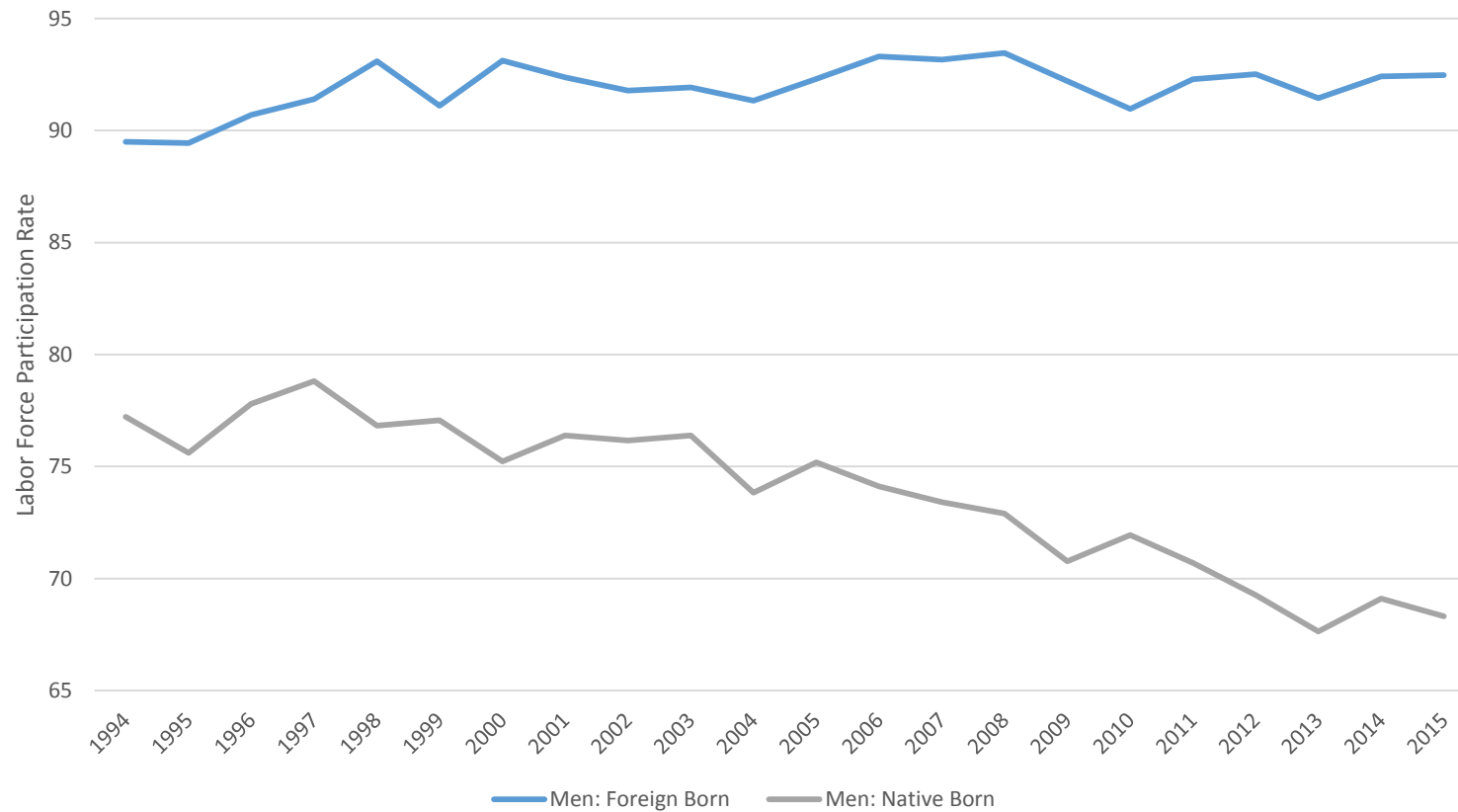
Recession dummy variables for the following recessions spanning the subsequent years- (1969-1970), (1973-1975), (1980-1982), (1990-1991), 2001, and (2007-2009).

Sources: Labor Force Data: Men 25-54 from 1948-2015 (Monthly Data), Bureau of Labor Statistics <http://data.bls.gov/pdq/querytool.jsp?survey=ln>.

Recession Data: National Bureau of Economic Research (NBER) "U.S. Business Cycle Expansions and Contractions" <http://www.nber.org/cycles.html>.

Not All High School Dropouts Seem To Have Suffered

Labor Force Participation Rates for Native and Foreign Born Prime Age Men With Less than a High School Education (1994-2015)



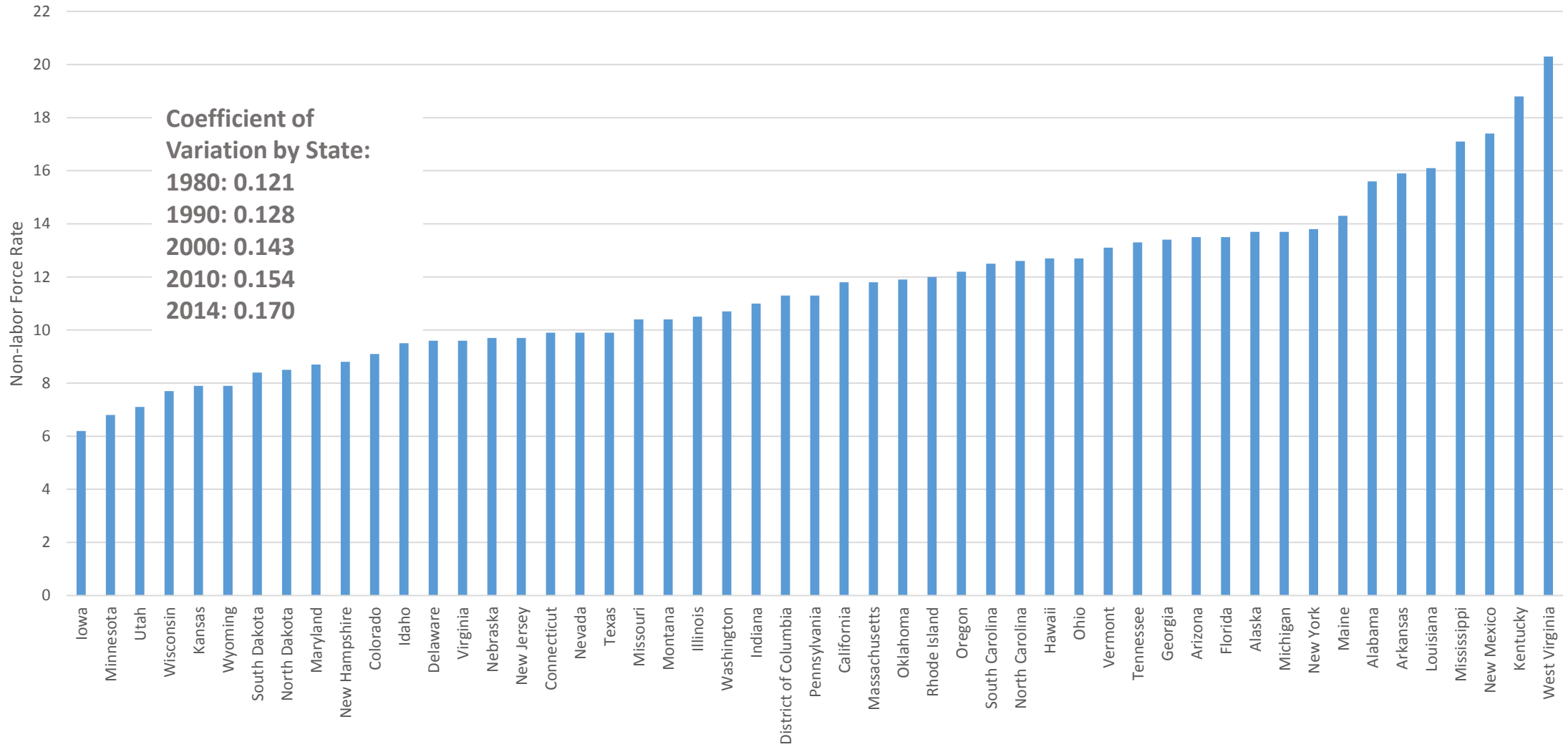
Copyright Nicholas Eberstadt

Notes: "Nativity" is a variable that equals 1 if an individual was born either in a territory of the United States or born in one of the fifty United States; "Nativity" equals 0 otherwise.

Source: U.S. Census Data, CPS Annual Social and Economic Supplement (ASEC) 1994-2014, "Poverty Status, All income levels" http://www.census.gov/data/tables/time-series/demo/income-poverty/cps-pov/pov24.2012.html#par_textimage_10, Date Accessed (July 6th, 2016)

Where Are The U-Hauls?

NILF Rates Among Prime Age Males by State (2015)



Copyright Nicholas Eberstadt

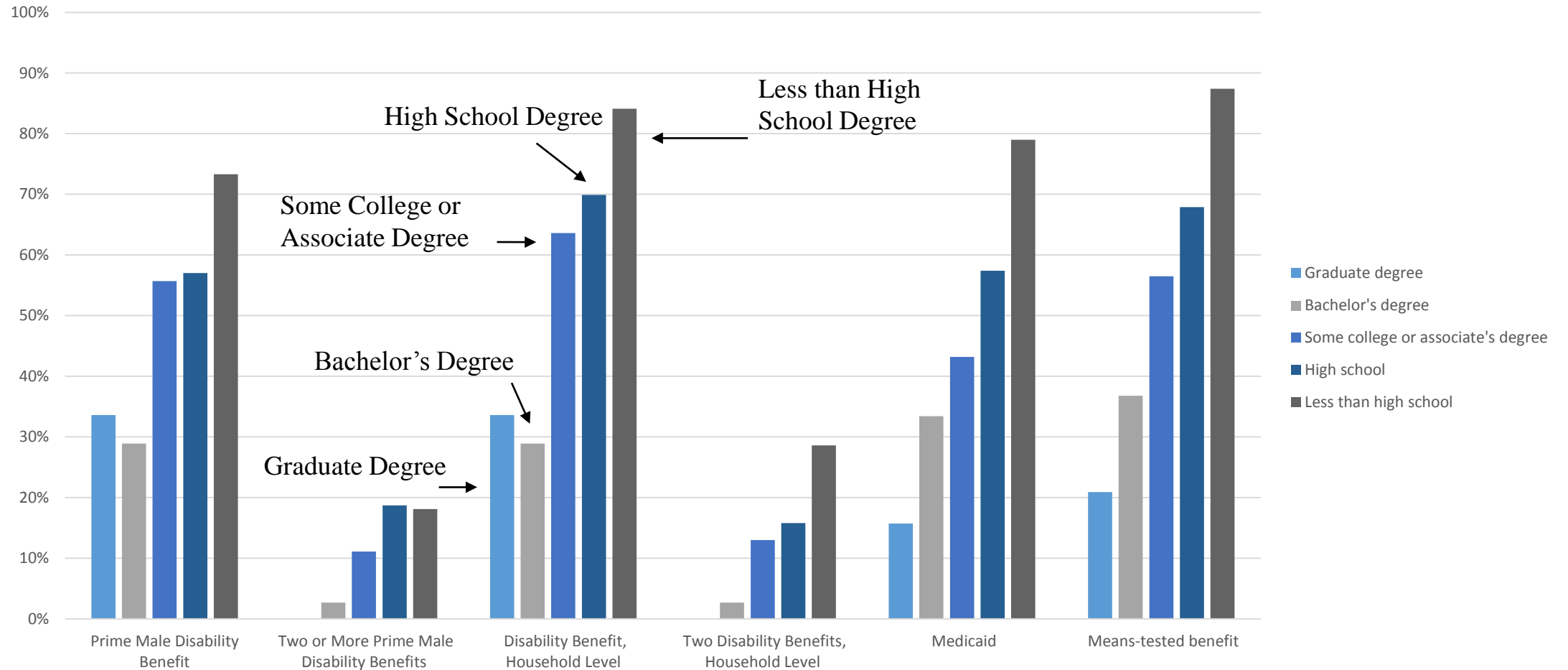
Disability Nation

Reported Recipience of Disability Benefits for Prime Working Age Men 25-54 and their Households: SIPP Survey, 1985 and 2013 (percent)

Year	Employment status	Prime male disability benefit	Two or more prime male disability benefits	Disability benefit, household level	Two disability benefits, household level
1985	Total	4.2	0.6	13.1	1.9
1985	Employed	2.0	0.04	10.1	1.1
1985	Unemployed	4.7	0.17	23.7	2.2
1985 NILF		38.3	9.9	51.9	13.6
2013	Total	6.3	1.1	14.9	2.4
2013	Employed	2.5	0.1	10.6	1.4
2013	Unemployed	4.3	--	21.6	2.2
2013 NILF		56.5	14.1	66.0	15.4

Disability, Medicaid, and the Opioid Epidemic

Reported Recipience of Disability Benefits and Means Tested Benefits by Education: US Prime Age Non-Labor Force Men, 2013 (percent)



Felony Nation

Estimated Population of Felons and Ex-Felons: USA, 1948-2010

