



HEALTH IT STRATEGY & POLICY

A Perspective On Patient Summaries

Jamie Ferguson, Vice President, Health IT Strategy & Policy

June 2016
Copyright © 2016 Kaiser Permanente

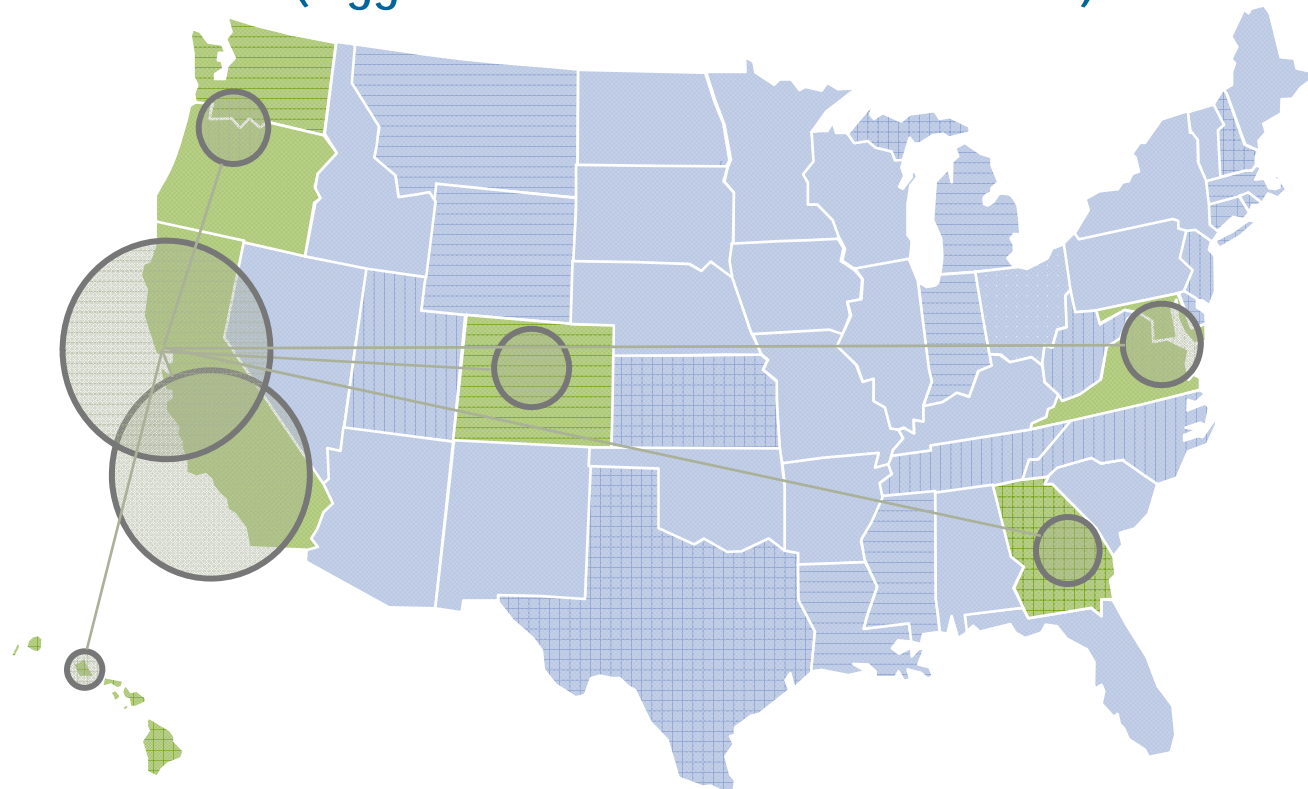
Kaiser Permanente

An Integrated Delivery System



Largest integrated delivery system in US
(bigger than 42 states & 130 countries)

- primary care
- specialty care
- home care
- hospital
- lab
- pharmacy
- imaging
- optical
- dental
- insurance
- research



One-stop Shopping For Most Services

- Ambulatory/outpatient care
- Audiology and optometry/ophthalmology
- Behavioral/mental health
- Dental care
- Diagnostic imaging, laboratory, and pharmacy
- Emergency care and hospitalization*
- Health education and preventive care
- Home health care
- Labor and delivery (childbirth)
- Occupational health (workers' compensation)
- Physical therapy
- Primary care integrating closely with specialty care, surgeons, hospitalists*

** Note: In Colorado, Georgia, and the Mid-Atlantic States, we contract with community hospitals for beds and some specialty care.*

Kaiser Permanente By The Numbers (2015)



433,413 hospital admissions;
6,291 neurosurgeries;
1 million mammograms

10.2 million members



38 hospitals



650+ outpatient surgery centers, medical office buildings, and other outpatient facilities



KAISER PERMANENTE®

70 years of providing care

\$60B in revenue

\$62B in assets

225,000 inpatient surgeries

98,000 births

40.2M doctor office visits



188M visits to KP.org My Health Manager



22M secure messages sent to providers



150M lab orders per year



78M prescription orders per year



4.8M appointments booked online

23.2 million real time exchanges of standardized patient summary record sets between health care entities for treatment purposes

EU-US CDA Section Comparison

epSOS/EU Directive	EU Patient Guidelines	epSOS PS	CCD	
Section	Optionality	Optionality	Optionality	Optionality
Allergy	R	R	Allergies	R
List of current medicines	R	R	Medications	R
List of current problems / diagnoses	R	R	Problem	R
Surgical Procedures prior to the past six months	R	O	Procedures	O (R only for inpatients)
Major Surgical Procedures in the past six months	R	R	Procedures	O (R only for inpatients)
Medical Devices and implants	R	R	Medical Equipment	O
Vaccinations	O	O	Immunizations	O
Social History Observations	O	O	Social History	O
Pregnancy history (Expected date of delivery)	O	O	Social History (Pregnancy Observation)	O
Physical findings (Vital Signs Observations)	O	O	Vital Signs	O
Diagnostic tests (Blood group)	O	O	Results Section	R
Treatment Recommendations	R	O	Plan of Care	O
Autonomy / Invalidity	R	O	Functional Status	O
List of resolved, closed or inactive problems			Advance Directives	O
			Family History	O
			Payer	O
			Encounters	O

Using same template OID, can be grouped together, only difference is the date

Text only

Not equivalent in regular specification CCD, can add as an open template, not included

Used By:

- [Consultation Note](#) (optional)
- [Discharge Summary](#) (optional)
- [History and Physical](#) (required)
- [Procedure Note](#) (optional)

4 sections not present in epSOS PS

Source: Trillium Bridge Project

US-EU Emergency Care Market Size (2014)

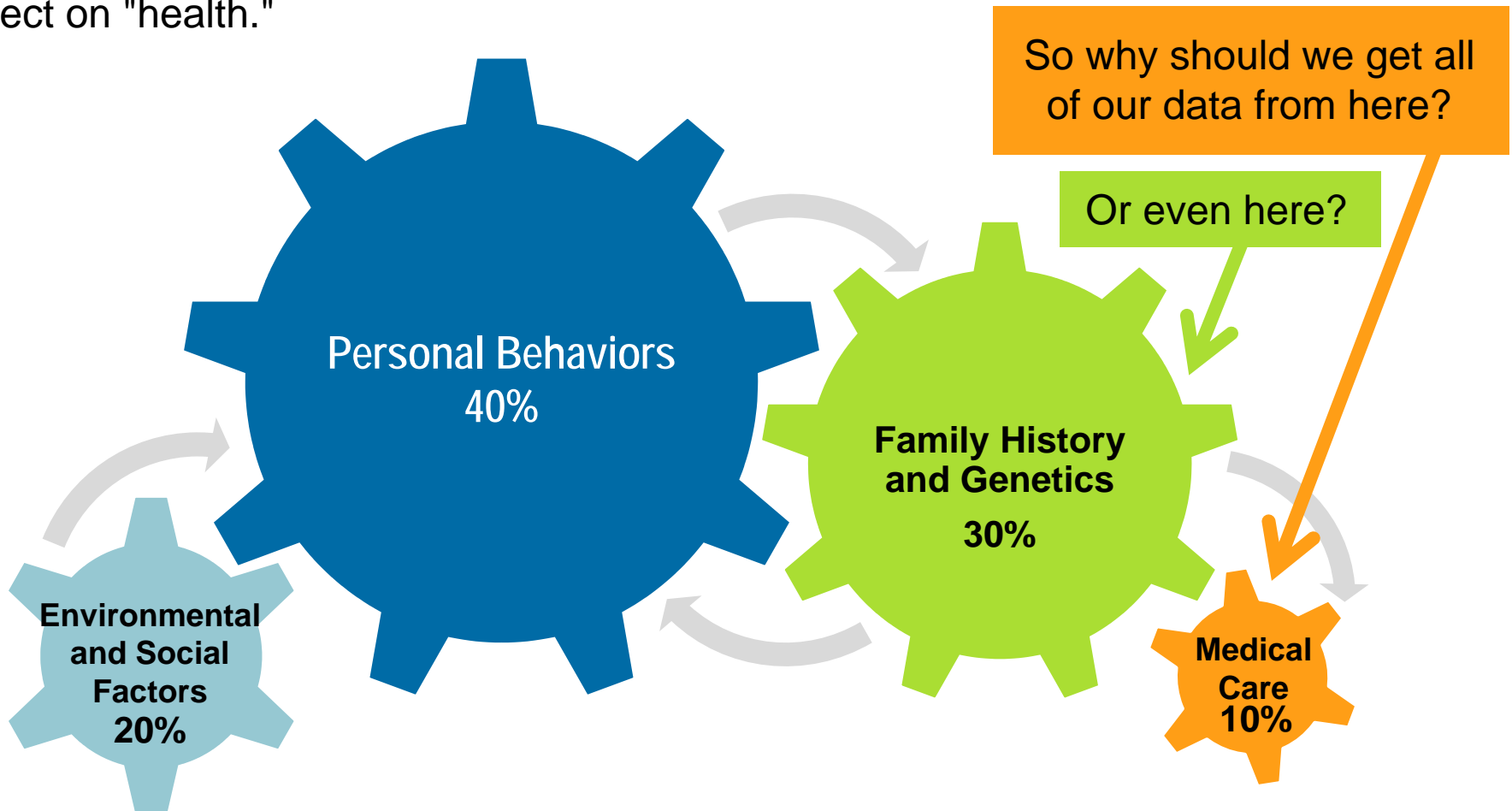
Emergency Departments Estimates: Need for Patient Summary & Healthcare Encounter Reports

International visitors to US each year	66,600,000
US people travel abroad each year	58,496,587
Average stay (days) when travelling	4
Total Person-Days in Foreign Country	500,278,348
Total Person-Years in Foreign Country	1,370,626
US ED Visits/year	129,800,000
US Population	309,300,000
ED Visits/1000 US Citizens	42
Expected ED visits by travelers to/from US	575,317

Source: Larry Garber, Atrius Health

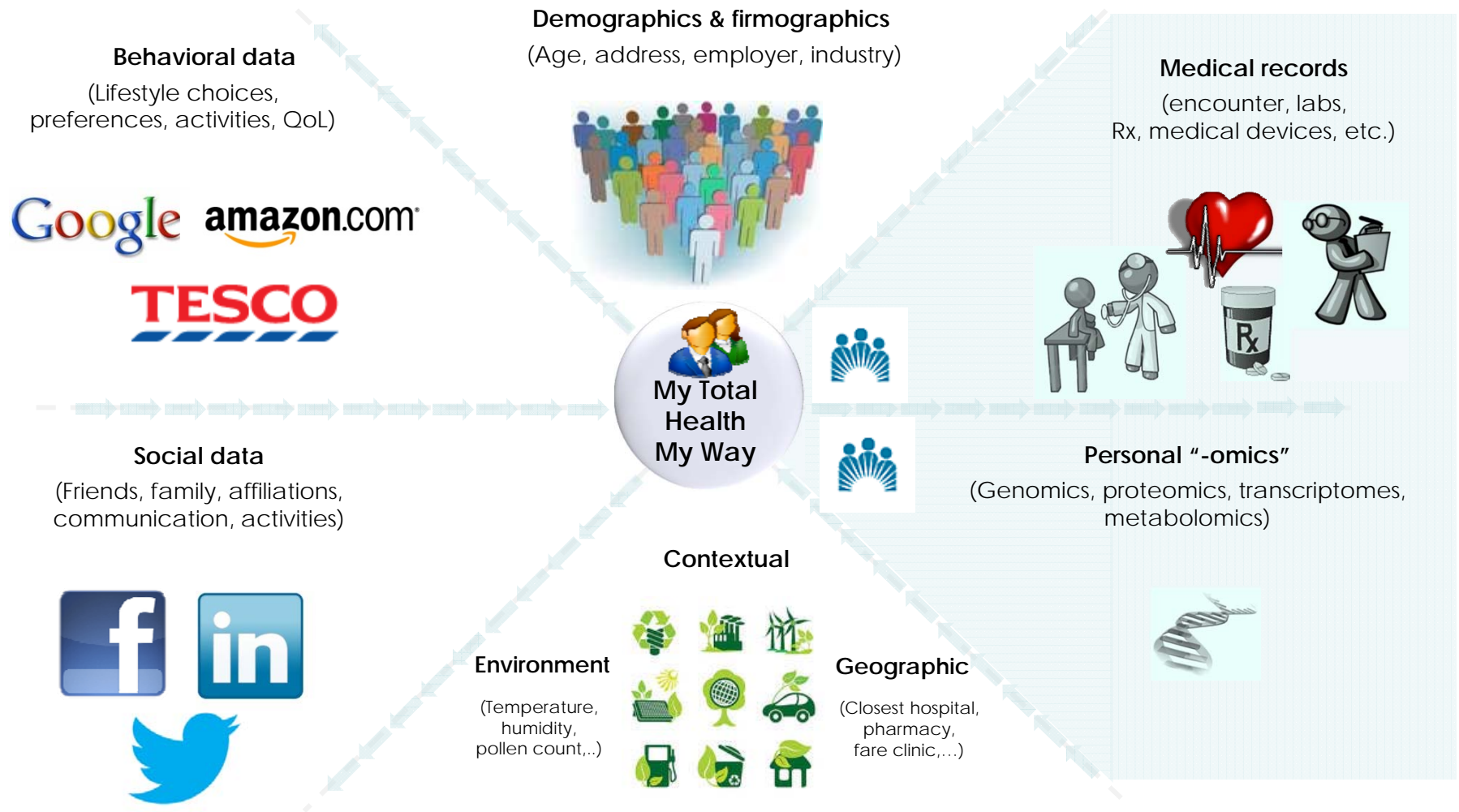
Health Is About More Than Clinical Care

Healthcare encounters and interventions have a comparatively small effect on "health."



There is a real need for tools that capture and leverage these social determinants of health to supplement traditional healthcare process and outcome measures.

Personal Information Is Increasingly Complex



Thank You

