



KENTUCKY FARM BUREAU
KFB 100 YEARS
— EST. 1919 —

99TH ANNUAL MEETING
NOVEMBER 28 - DECEMBER 1, 2018

Our Mission

Kentucky Farm Bureau is a voluntary organization of farm families and their allies dedicated to serving as the voice of agriculture by identifying problems, developing solutions and taking actions which will improve net farm income, achieve better economic opportunities and enhance the quality of life for all.



Welcome

Welcome to the 99th Annual Meeting of Kentucky Farm Bureau and thank you for participating in this important event!

As we prepare to enter our Centennial Year, it's hard to express how exciting it is to be a part of an organization that has such a storied and successful past as Kentucky Farm Bureau.

For the last century, we have seen many things change in our agricultural industry. From advanced technology to new platforms of communication, it's a different world than in 1919, when this organization began.

But the reasons for our existence have not changed. We are still here to serve as the Voice of Kentucky Agriculture, and to advocate for our rural communities and the farm families who work so hard to provide the food, fuel, and fiber the citizens of this country need, as well as the growing world population.

During this Annual Meeting, we will take time to honor individuals, families, and county Farm Bureaus for their noteworthy contributions to Kentucky agriculture. We'll be informed and challenged by messages from our guest speakers. We'll elect leaders tasked to direct Kentucky Farm Bureau's efforts, set policy, and prioritize legislative issues for 2019.

We will also begin a year of celebration marking our 100th anniversary. This is a once-in-a-lifetime opportunity to relish in the accomplishments made by the generations who came before us. But it is also a time to look forward and remain diligent in our efforts to be the most effective Farm Bureau members we can for the generations of members to come.

As usual, there are many events, activities, and special interest conferences planned for this year's Annual Meeting, and the schedules and maps listed on the following pages are included to help you better plan your time. We certainly hope you enjoy the activities our staff has coordinated for your benefit, and also encourage you to come ready to learn, share, and partner with your fellow Farm Bureau members.

We sincerely hope you enjoy this Annual Meeting and your stay in Louisville. Thank you again for joining us, and we wish you and your families a very Merry Christmas and a happy and productive New Year.

Mark Hancey
President

Drew Graham
Executive Vice President

Wednesday, November 28

REGISTRATION & INFORMATION

Suite Tower - 2nd Level
Registration Area
2:00 p.m.

BOARD OF DIRECTORS MEETING

Suite Tower - 2nd Level
Carroll/Ford Room
3:30 p.m.

VESPERS AND MEMORIAL SERVICE

Suite Tower - 2nd Level
Grand Ballroom A
7:30 p.m.

Performance by
Waylon Bayes
Johnson County
2018 Kentucky State Fair Gospel Music Showcase Best of Show



Message by
Nick Sandefur, Senior Pastor
Porter Memorial Baptist Church
Lexington, Kentucky

Thursday, November 29

REGISTRATION & INFORMATION

Suite Tower - 2nd Level
Registration Area
7:00 a.m.

AG CHEMICAL CONFERENCE

Suite Tower - 2nd Level
Brown Room
8:30 a.m.

FORESTRY CONFERENCE

Suite Tower - 2nd Level
Nunn Room
8:30 a.m.

GENERAL LIVESTOCK ISSUES CONFERENCE

Suite Tower - 2nd Level
Carroll/Ford Room
8:30 a.m.

TOBACCO/FARM LABOR CONFERENCE

Suite Tower - 2nd Level
Combs/Chandler Room
8:30 a.m.

YOUNG FARMER EXCELLENCE IN AGRICULTURE AWARD CONTEST FINALS

Suite Tower - 1st Level
Wilkinson Room
8:30 a.m.

DAIRY CONFERENCE

Suite Tower - 2nd Level
Brown Room
10:00 a.m.

ENVIRONMENTAL ISSUES CONFERENCE

Suite Tower - 2nd Level
Combs/Chandler Room
10:00 a.m.

Thursday, November 29

THE 2019 KENTUCKY AGRICULTURAL ECONOMIC OUTLOOK

Presented by the University of Kentucky College of Agriculture,

Food & Environment

Suite Tower – 2nd Level

Carroll/Ford Room

10:00 a.m.

COMMODITY LUNCHEON

Suite Tower – 2nd Level

Grand Ballroom B & C

11:30 a.m.



*The Honorable Ryan Quarles, Commissioner
Kentucky Department of Agriculture
Frankfort, Kentucky
Remarks*



*Zippy Duvall, President
American Farm Bureau Federation
Washington, D.C.
Speaker*

WOMEN'S CAUCUSES

Suite Tower – 3rd Level

1:30 p.m.

District:

No. 2 – Wilson Room

No. 4 – Beckham Room

No. 6 – Taylor Room

District:

No. 8 – Jones Room

No. 10 – Coe Room

BEEF/FORAGE CONFERENCE

Suite Tower – 2nd Level

Carroll/Ford Room

1:45 p.m.

FIELD CROP PRODUCTION CONFERENCE

Suite Tower – 2nd Level

Combs/Chandler Room

1:45 p.m.

SPECIALTY CROPS CONFERENCE

Suite Tower – 2nd Level

Nunn Room

1:45 p.m.

WOMEN'S BUSINESS MEETING

Suite Tower – 3rd Level

French Room

2:00 p.m.

YOUNG FARMER COMMITTEE MEETING

Suite Tower – 1st Level

Laffoon Room

2:00 p.m.

RESOLUTIONS COMMITTEE MEETING

Suite Tower – 2nd Level

Breathitt Room

2:30 p.m.

GENERAL SESSION

Suite Tower – 2nd Level

Grand Ballroom A

3:30 p.m.



*Mark Haney
President
Presiding*

Outstanding Farm Bureau Youth Contest
Conducted by Judy Hayden, First Vice Chair
KFB Women's Advisory Committee

County Activities of Excellence Program Recognition
Kentucky Farm Bureau Safety Challenge Awards
Farm Public Relations Award
Communications Awards

CENTENNIAL KICK-OFF EVENT

Suite Tower – 2nd Level

Grand Ballroom B & C

7:30 p.m. (ticketed event, doors open at 7:00 p.m.)

Exile Concert

Friday, November 30

REGISTRATION & INFORMATION

Suite Tower – 2nd Level
Registration Area
7:00 a.m.

RECOGNITION & AWARDS BREAKFAST

Suite Tower - 2nd Level
Grand Ballroom B & C
7:30 a.m.

GENERAL SESSION

Suite Tower - 2nd Level
Grand Ballroom A
9:15 a.m.



*Eddie Melton
First Vice President
Presiding*

President's Address – Mark Haney

Kentucky Farm Bureau Farmer of the Year Award

Distinguished Service Awards

Recognition of the 2017-2018 LEAD Class Graduates



*Jimmy Travis, Humorist
Nashville, Tennessee*

GOLD STAR LUNCHEON

Rivue Tower – 3rd Level
Cochran and Addition Rooms
12:00 noon



*Vickie Bryant, Chair
KFB Women's Advisory Committee
Presiding*

County Gold Star Awards Presentation

YOUNG FARMERS LUNCHEON

Suite Tower - 2nd Level
Grand Ballroom B & C
12:00 noon



*John Pedigo, Chair
KFB Young Farmer Advisory Committee
Presiding*

Young Farmer Awards Presentation

BUSINESS SESSION

Suite Tower - 2nd Level
Grand Ballroom A
2:00 p.m.

Mark Haney, President, Presiding

Report of Credentials Committee

Discussion and Adoption of Resolutions

Friday, November 30

CAUCUSES TO NOMINATE DIRECTORS

Suite Tower
4:30 p.m.

District

- No. 1 - Brown Room, 2nd Level
- No. 2 - Breathitt Room, 2nd Level
- No. 3 - Nunn Room, 2nd Level
- No. 4 - Jones Room, 3rd Level
- No. 5 - Coe Room, 3rd Level
- No. 6 - Laffoon Room, 1st Level
- No. 7 - Carroll/Ford Room, 2nd Level
- No. 8 - McCreary Room, 3rd Level
- No. 9 - Stopher Room, 3rd Level
- No. 10 - Combs/Chandler Room, 2nd Level
- No. 11 - Taylor Room, 3rd Level
- Insurance Agents - Beckham Room, 3rd Level

PRESIDENT'S RECEPTION

Suite Tower - 2nd Level
Grand Ballroom B & C
5:45 p.m.

GENERAL SESSION

Suite Tower - 2nd Level
Grand Ballroom A
7:00 p.m.



*Fritz Giesecke
Second Vice President
Presiding*

Discussion Meet Finals
Miranda Chaplin, Bourbon County
2017 Discussion Meet Winner, Moderator

Variety Showcase
Conducted by Mary Jayne Cannon, Second Vice Chair
KFB Women's Advisory Committee

Saturday, December 1

REGISTRATION & INFORMATION

Suite Tower - 2nd Level
Registration Area
7:00 a.m.

PUBLIC AFFAIRS BREAKFAST

Suite Tower - 2nd Level
Grand Ballroom B & C
7:30 a.m.



*The Honorable James Comer
U.S. House of Representatives
First District - Kentucky
Speaker*

BUSINESS SESSION

Suite Tower - 2nd Level
Grand Ballroom A
9:00 a.m.

Mark Haney, President, Presiding



*Year In Review
Drew Graham
Executive Vice President*



*Address by
The Honorable Mitch McConnell
U.S. Senate Majority Leader*

Report of Credentials Committee
Approval of Minutes of Last Meeting
Election of Directors and Officers: 10:00 a.m.
Discussion and Adoption of Resolutions
Unfinished Business

BOARD OF DIRECTORS MEETING

Suite Tower - 2nd Level
Carroll/Ford Room

HEADQUARTERS

Suite Tower – 2nd Level
Clements Room

PRESS ROOM

Suite Tower – 2nd Level
Willis Room

SPONSORS & GIFTS

Case IH
Community Trust Bank
Farm Credit Mid-America
Jacobi Sales
Kubota Tractor Corporation
New Holland North America
Nutrien Ag Solutions
Pioneer
Premier Crop Insurance
Republic Bank
Southern States Cooperative
Southern Farm Bureau Life Insurance Company
Kentucky Farm Bureau Insurance Companies
Kentucky Farm Bureau Federation

CREDENTIALS COMMITTEE

Mr. Terry Lawson, Mt. Vernon, Chair
Mr. David Chappell, Owenton
Mr. Don Miniard, Bledsoe

CREDENTIALS COMMITTEE SCHEDULE

Suite Tower – 2nd Level
Window Seat Alcove Near Registration

Wednesday, November 28	2:00 p.m. – 3:15 p.m.
Thursday, November 29	8:00 a.m. – 11:15 a.m. 2:00 p.m. – 3:30 p.m.
Friday, November 30	8:45 a.m. – 9:00 a.m. 10:30 a.m. – 11:45 a.m. 1:15 p.m. – 1:30 p.m. 2:30 p.m. – 4:00 p.m.
Saturday, December 1	8:00 a.m. – 8:45 a.m.

VOTING DELEGATE CERTIFICATION

Suite Tower – 2nd Level
Window Seat Alcove Near Registration

Wednesday, November 28	2:00 p.m. – 5:00 p.m.
Thursday, November 29	8:00 a.m. – 5:00 p.m.
Friday, November 30	8:00 a.m. – 1:15 p.m. 2:00 p.m. – 4:00 p.m. At the conclusion of district caucuses
Saturday, December 1	8:00 a.m. – 8:45 a.m.

HOSPITALITY

Sponsored by Kentucky Farm Bureau Insurance Companies

Suite Tower – 2nd Level – Exhibit Area

Thursday, November 29	8:00 a.m. – 10:00 a.m. 1:30 p.m. – 3:30 p.m.
-----------------------	---

TRADE SHOW

Suite Tower – 2nd Level – Exhibit Area

Exhibits will be open –
Thursday, November 29 8:00 a.m. – 3:30 p.m.

KENTUCKY FARM BUREAU'S COUNTRY STORE

Suite Tower – 2nd Level
Behind Entry Sign

Thursday, November 29	9:00 a.m. – 3:30 p.m.
Friday, November 30	9:00 a.m. – 4:00 p.m.

COUNTY ACTIVITIES OF EXCELLENCE PROGRAM

Bourbon County*
Fleming County*
Greenup County
Hancock County
Nelson County*

* Selected by AFBF to exhibit at the 2019 AFBF Convention Tradeshow in New Orleans, LA

EXECUTIVE COMMITTEE & BOARD OF DIRECTORS

Mark Haney, Nancy, President
Eddie Melton, Sebree, First Vice President
Fritz Giesecke, Horse Cave, Second Vice President
Drew Graham, State FB Office, Executive Vice President
Glenn Howell, Fulton
Sharon Furches, Murray
Kelly Thurman, Livermore
Mary Kate Kordes, Central City
Larry Thomas, Elizabethtown
Pat Henderson, Irvington
Jay Coleman, Cave City
Larry Clark, Greensburg
Scott Travis, Cox's Creek
Randy Chrisman, Lawrenceburg
Joe Paul Mattingly, Raywick
David Chappell, Owenton
Terry Rowlett, Campbellsburg
Kim McCoy, Burkesville
Victor Rexroat, Russell Springs
David L. Campbell, Stanford
Terry Lawson, Mt. Vernon
Alex Barnett, Cynthiana
Shane Wiseman, Winchester
David McGlone, Grayson
Carroll Amyx, Campton
Cloyce Hinkle, Artemus
Don Miniard, Bledsoe
Marshall Coyle, Immediate Past President, Owingsville
Vickie Bryant, KFB Women, Tompkinsville

John Pedigo, KFB Young Farmers, Fountain Run
Roger Fannin, KFB Insurance Agents, Harlan
Dr. Nancy Cox, UK College of Agriculture, Food & Environment
Lexington
Brandon Davis, Kentucky Department of Education, Lawrenceburg
Greg Drake II, Kentucky Association of County Agricultural Agents
Bowling Green

RESOLUTIONS COMMITTEE

Eddie Melton, Sebree, Chair

Vickie Bryant, Tompkinsville

Tyler Ferguson, Flat Gap

Penny Fleming, Hickman

Doug Hall, Benton

Gerry Hayden, Calhoun

Bill Holbrook, Morganfield

Kevin Cashman, Webster

Mitchel Logsdon, Munfordville

Maurice Heard, Rockfield

Scott Davis, Tompkinsville

P.J. Milburn, Chaplin

Sam Lafferty, Shelbyville

Mark Kinsey, Crittenden

Gary Chaplin, Butler

Wes Hargis, Science Hill

Jerry Durham, Yosemite

Scott Barnes, Lancaster

Kenneth Rice, Irvine

Randall Wood, Flemingsburg

Rob McClanahan, Butler

Berkley Mark, Mt. Sterling

Ray Sammons, Rush

Larry Clay, Chavies

Holden Williams, Bays

Special Interest Conferences

Thursday, November 29

AG CHEMICAL CONFERENCE

Suite Tower – 2nd Level – Brown Room – 8:30 a.m.

PRESIDING: Dwight Greenwell, Director, Member Services
Kentucky Farm Bureau Federation

“2019 CHEMICAL OUTLOOK”

Brad Reed, Owner

KOVA

Greensburg, Indiana

FORESTRY CONFERENCE

Suite Tower – 2nd Level – Nunn Room – 8:30 a.m.

PRESIDING: Don Miniard, Chair
KFBF Forestry Advisory Committee
Bledsoe, Kentucky

“Logging in Kentucky – Landowner and Logger Responsibilities”

Chris Terry, President

Terry Logging, Inc.

Morehead, Kentucky

“Future of White Oak Markets”

Chad Niman, Forestry Extension Associate
Department of Forestry and Natural Resources
UK College of Agriculture, Food & Environment
Lexington, Kentucky

GENERAL LIVESTOCK ISSUES CONFERENCE

Suite Tower – 2nd Level – Carroll/Ford Room – 8:30 a.m.

PRESIDING: Jay Coleman, Chair
KFBF Poultry Advisory Committee
Cave City, Kentucky

“Preparing for Foreign Animal Disease: How Labs Get Ready for Devastating Disease Outbreaks”

Dr. Debbie Reed, Director

Murray State University Breathitt Veterinary Center
Hopkinsville, Kentucky

“Environmental Factors Affecting Livestock Production”

Dr. Stephen Higgins, Director of Environmental Compliance
Kentucky Agricultural Experiment Station
UK College of Agriculture, Food & Environment
Lexington, Kentucky

Special Interest Conferences

TOBACCO/FARM LABOR CONFERENCE

Suite Tower – 2nd Level – Combs/Chandler – 8:30 a.m.

PRESIDING: Scott Travis, Chair

KFBF Tobacco Advisory Committee
Cox's Creek, Kentucky

Shane Wiseman, Chair

KFBF Farm Labor Advisory Committee
Winchester, Kentucky

“Market Outlook & the Importance of GAP”

Jon Huenemann, Vice President

U.S. and International External Affairs

Philip Morris International

Washington, D.C.

“Changing Labor Environment”

Karen Garnett, District Director

Wage and Hour Division

U.S. Department of Labor

Louisville, Kentucky

DAIRY CONFERENCE

Suite Tower – 2nd Level – Brown Room – 10:00 a.m.

PRESIDING: Terry Rowlett, Chair

KFBF Dairy Advisory Committee
Campbellsburg, Kentucky

“Overview of RMA's New Dairy Revenue Protection Product”

Dr. John Newton, Director, Market Intelligence

Public Policy Department

American Farm Bureau Federation

Washington, D.C.

“What will be in the New Farm Bill?”

Joe Cain, Director

Commodity Division

Kentucky Farm Bureau Federation

Louisville, Kentucky

Thursday, November 29

ENVIRONMENTAL ISSUES CONFERENCE

Suite Tower – 2nd Level – Combs/Chandler Room – 10:00 a.m.

PRESIDING: Larry Thomas, Chair

KFBF Natural Resources Advisory Committee
Elizabethtown, Kentucky

“Water Resource Development Projects”

Dr. Stephen Higgins, Director of Environmental Compliance

Kentucky Agricultural Experiment Station

UK College of Agriculture, Food & Environment

Lexington, Kentucky

“KY Water Resources Board Water Project Cost-Share Program”

Dale Booth, Environmental Scientist III

Watershed Management Branch

Kentucky Division of Water

Frankfort, Kentucky

“Update on Kentucky's Pollinator Protection Plan”

Sunni Carr, Coordinator

Wildlife Program

Kentucky Department of Fish & Wildlife Resources

Frankfort, Kentucky

THE 2019 KENTUCKY AGRICULTURAL ECONOMIC OUTLOOK

Presented by the University of Kentucky College of Agriculture, Food & Environment

Suite Tower – 2nd Level – Carroll/Ford Room – 10:00 a.m.

Welcome by Mark Haney, President, Kentucky Farm Bureau

Panel Discussion by UK Faculty – Dean Nancy Cox, Moderator

Introductions – Dr. Barry Barnett

U.S. and Kentucky Ag Economy/Tobacco Outlook – Dr. Will Snell

Livestock Outlook – Dr. Kenny Burdine

Grains Outlook – Dr. Todd Davis

Horticulture Outlook – Dr. Tim Woods

Forestry Outlook – Dr. Jeff Stringer

Income Implications for Kentucky Farms and Farm Households –

Jerry Pierce

Special Interest Conferences

BEEF/FORAGE CONFERENCE

Suite Tower – 2nd Level – Carroll/Ford Room – 1:45 p.m.

PRESIDING: Fritz Giesecke, Chair

KFBF Beef Advisory Committee
Horse Cave, Kentucky

David McGlone, Chair
KFBF Forage Advisory Committee
Grayson, Kentucky

“Beef Cattle Market Outlook”

Dr. John Newton, Director, Market Intelligence
Public Policy Department
American Farm Bureau Federation
Washington, D.C.

“Rejuvenating Rundown Pastures: An Integrated Approach to Restoring Pasture Productivity”

Dr. Chris Teutsch, Forage Extension Specialist
Department of Plant and Soil Sciences
UK College of Agriculture, Food & Environment
UK Grain and Forage Center of Excellence
Princeton, Kentucky

FIELD CROP PRODUCTION CONFERENCE

Suite Tower – 2nd Level – Combs/Chandler – 1:45 p.m.

PRESIDING: Sharon Furches, Chair

KFBF Feed Grains & Wheat Advisory Committee
Murray, Kentucky

Kim McCoy, Chair
KFBF Soybean Advisory Committee
Burkesville, Kentucky

“International Trade’s Impact on U.S. Ag”

Anita Katial, Counselor
Foreign Agricultural Service
U.S. Department of Agriculture
Panama City, Panama

“Update on Kentucky Grain Law”

Keith Rogers, Chief of Staff
Kentucky Department of Agriculture
Frankfort, Kentucky

“What will be in the New Farm Bill”

Dr. John Newton, Director, Market Intelligence
Public Policy Department
American Farm Bureau Federation
Washington, D.C.

Thursday, November 29

SPECIALTY CROPS CONFERENCE

Suite Tower – 2nd Level – Nunn Room – 1:45 p.m.

PRESIDING: David Chappell, Chair

KFBF Horticulture Advisory Committee
Owenton, Kentucky

“Federal Produce Safety Rule is Here – Is Your Farm Covered?”

Ben Conner, Manager
Produce Safety Program
Kentucky Department of Agriculture
Frankfort, Kentucky

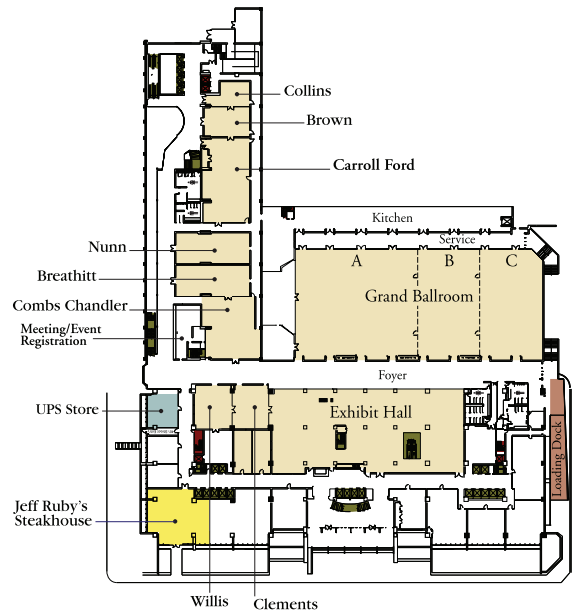
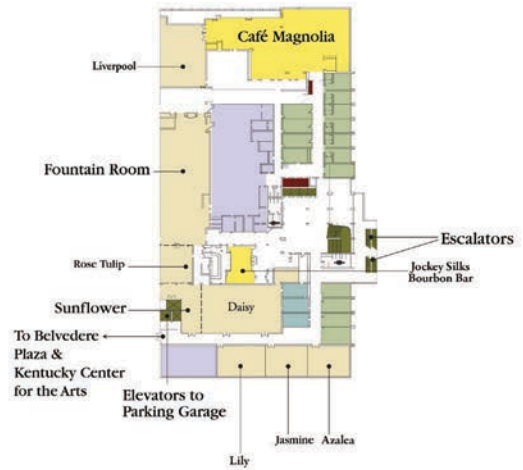
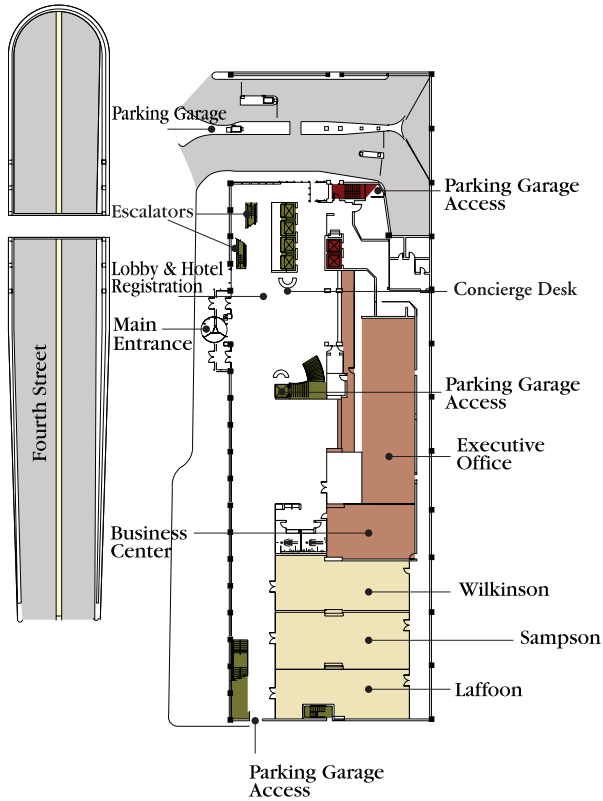
Brent Burchett, Director
Plant Division
Kentucky Department of Agriculture
Frankfort, Kentucky

“Kentucky Horticulture Council: 25+ Years of Plants and Partners”

Cindy Finneseth, Executive Director
Kentucky Horticulture Council
Lexington, Kentucky

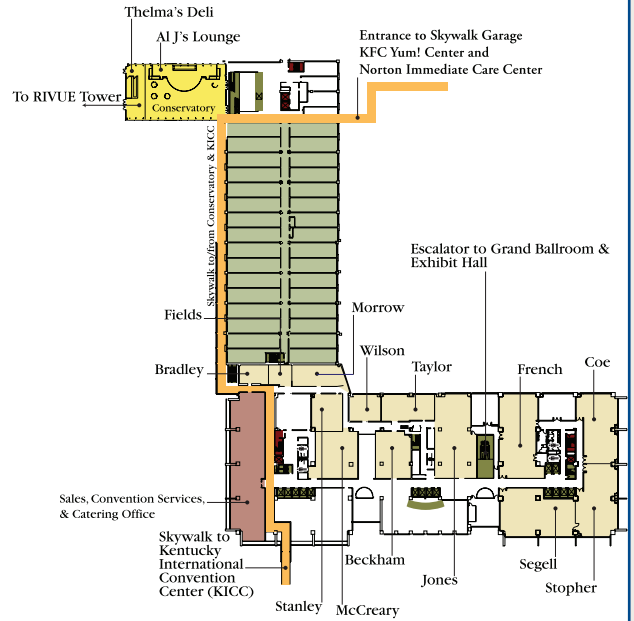
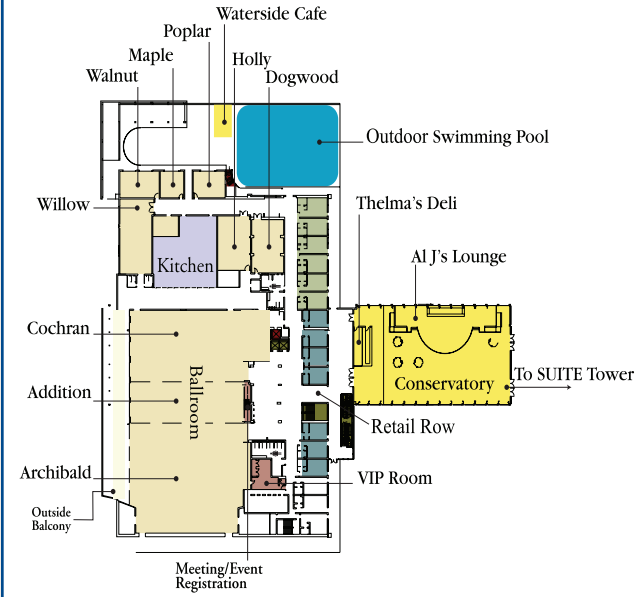
“Imel’s Greenhouse – A Certified Roadside Farm Market Member”

Kenny Imel, Co-Owner
Imel’s Greenhouse
Greenup, Kentucky



RIVUE TOWER

SUITE TOWER



Notes

Future Dates

KENTUCKY FARM BUREAU FEDERATION ANNUAL MEETINGS

December 4–7, 2019
Galt House, Louisville

December 2-5, 2020
Galt House, Louisville

December 1-4, 2021
Galt House, Louisville

AMERICAN FARM BUREAU FEDERATION ANNUAL MEETINGS

January 11-16, 2019
New Orleans, LA

January 17-22, 2020
Austin, TX

January 8-13, 2021
San Diego, CA



kyfb.com