

Body and Pelvic MR

Earn up to 35 AMA PRA Category 1 Credits™ and 25 SAM Credits

ACR Member \$3,500

Member-in-Training \$1,750

Nonmember \$5,000



Course Director:

Diego Martin, MD, PhD, FRCPC

The Cosden Professor and Chairman
Department of Medical Imaging
University of Arizona

Course Dates

January 13–15 (Fri. – Sun.)

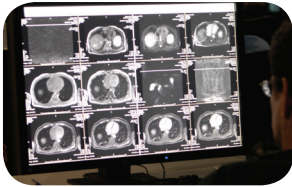
April 7–9 (Fri. – Sun.)

March 17–19 (Fri. – Sun.) (Tucson, AZ)

July 14–16 (Fri. – Sun.)

October 13–15 (Fri. – Sun.)

Course Overview



This three-day, intensive practical course on abdominal and pelvic MR image interpretation will focus on the most common current indications for abdominal and pelvic MR — imaging of the liver, pancreas, pelvis and the kidneys. It is aimed to help a range of radiologists, from the general radiology practitioner to the moderately advanced MRI expert.

In contrast to passive lectures, participants will be provided their own FUJI Synapse workstation from which actual patient abdominal MRI studies will be viewed. A formalized reporting structure will be used for the attendee to analyze their viewing of the findings. Additionally these findings can be reviewed and discussed with the teaching faculty.

Program Objectives

At the conclusion of this course, participants will be able to:

- Interpret at least 100 patient cases on a FUJI Synapse workstation
- List the protocol expertise for acquiring a comprehensive examination within a 20-minute scan time
- Describe the rationale for the acquisition methods: which acquisition shows specific aspects of particular pathologies
- Identify and develop expertise in the diagnostic evaluation of a range of liver tumors and diffuse liver disease; gallbladder and diseases of the bile ducts; pancreatic malignancies and diffuse pancreatic disease; renal malignancies; abdominal vascular, retroperitoneal, and peritoneal disease; and pathologies of male and female pelvis

Workstation

FUJI Synapse

Certificate

Attendees who complete a minimum of 100 cases will be awarded a Certificate of Proficiency stating they meet the Maintenance of Competence case requirement as specified in the ACR-SAR-SPR Practice Parameter for the Performance of Magnetic Resonance Imaging (MRI) of the Abdomen and Liver.

Accreditation Statement: The American College of Radiology is accredited by the Accreditation Council for Continuing Medical Education to provide continuing medical education for physicians.

Designation Statement: The American College of Radiology designates this live activity for a maximum of 35 AMA PRA Category 1 Credits™. Physicians should claim only the credit commensurate with the extent of their participation in the activity.

Qualified on 08/01/2016, this activity meets the American Board of Radiology's criteria for a self-assessment (SAM) activity and is designated for up to 25 SAM Credits toward the ABR Maintenance of Certification program.

	7:00 a.m.	Workstation Introduction
	8:00 a.m.	Introduction to Body MRI: Liver
	10:00 a.m.	Break
	10:15 a.m.	Independent Case Review #1
	11:30 a.m.	Structured Case Review #1: Liver
	12:30 p.m.	Lunch
	1:00 p.m.	Diffuse Liver Disease
	2:00 p.m.	Independent Case Review #2
	2:45 p.m.	Break
	3:00 p.m.	Independent Case Review #3
	3:30 p.m.	Structured Case Review #2: Liver
	4:00 p.m.	Pancreas
	5:00 p.m.	Independent Case Review #4
	5:30 p.m.	Cocktail Reception
	6:00 p.m.	Optional Time for Self Review of Cases
	10:00 p.m.	ACR Education Center Closes
Day 1	7:00 a.m.	Optional Time for Self Review of Cases
	8:00 a.m.	Independent Case Review #5
	9:30 a.m.	Structured Case Review #3: Pancreas
	10:00 a.m.	Break
	10:15 a.m.	Independent Case Review #6
	11:00 a.m.	Kidney
	12:30 p.m.	Lunch
	1:00 p.m.	Independent Case Review #7
	2:45 p.m.	Break
	3:00 p.m.	Structured Case Review #4: Kidney
	3:45 p.m.	Bowel: IBD
	5:30 p.m.	Break
	6:00 p.m.	Optional Time for Self Review of Cases
	10:00 p.m.	ACR Education Center Closes
Day 2	7:00 a.m.	Optional Time for Self Review of Cases
	8:00 a.m.	Male Pelvis
	9:00 a.m.	Break
	9:15 a.m.	Female Pelvis and Rectal Cancer
	10:00 a.m.	Independent Case Review #8
	11:30 a.m.	Structured Case Review #5: Bowel
	12:30 p.m.	Lunch
	1:00 p.m.	Independent Case Review #9
	2:00 p.m.	Structured Case Review #6: Pelvis
	2:45 p.m.	Break
	3:00 p.m.	Independent Case Review #10
	4:00 p.m.	Course Concludes
Day 3		

Lectures are in bold

"This course provides the ability to go through cases in a setting similar to PACS work environment but with the benefit of case review analysis and availability of experts for questions. It is a uniquely effective learning environment."

— Nina J. Gordon, MD
Radiology Imaging Associates

1-800-373-2204 | acr.org/BodyMR