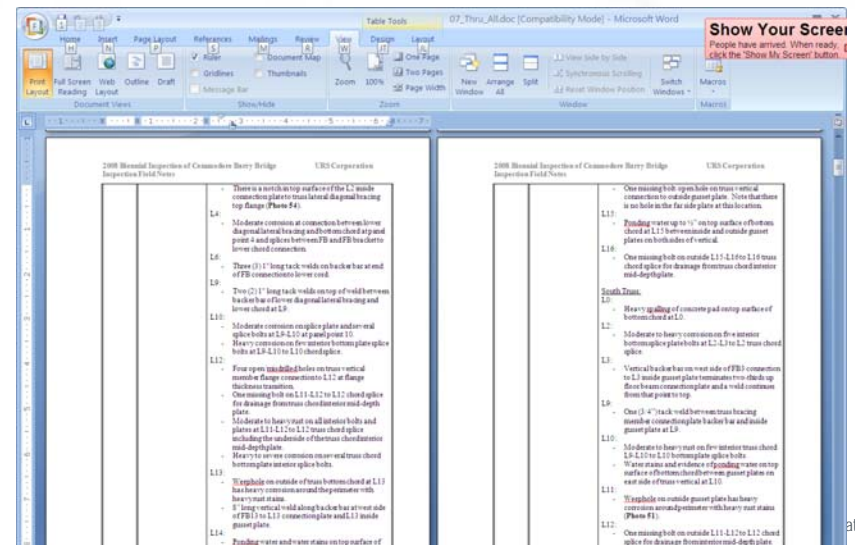
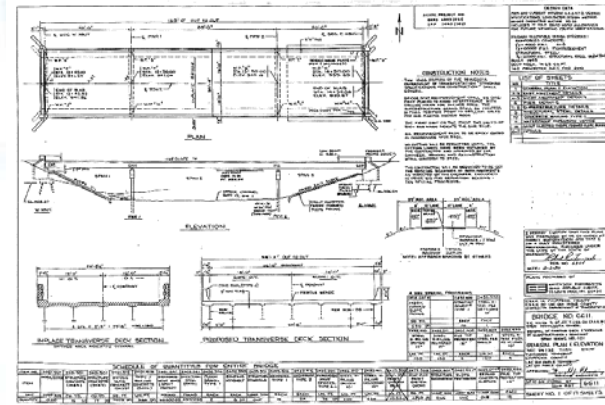




# Best Practices in Modern Mobile Inspections

# Typical Inspection Report Process of Today

- Paper based data collection
- Use of digital camera with photo log
- Print out previous inspection reports, plan documents, inspection manuals
- Rudimentary measurement techniques
- Manually enter inspection results into Asset Management system after returning to office



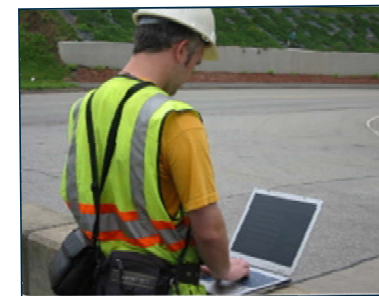
## Utilizing Devices and Technology for Inspections

- Mobile Tablets for electronic data entry of inspection results
- Creating electronic sketches to include in field notes
- Capturing photos and video
- Access to historic reports, photos, plans and inspection manuals
- Device tools to capture GPS positions
- Seamless synchronization of all data with Asset Management system
- 3D Scans to collect measurements



# Benefits of New Technology for Inspections

- Improves data accuracy through collection
  - Single source of data entry with electronic error checks
  - More accurate measurement data
- Allows inspectors to spend more time in the field
- Access to historic information and documentation
- Instantaneous updating of asset management system
  - Including critical deficiencies



# Bentley Mobile Tools

- InspectTech Collector Mobile
- Download from app store
- Synchronizes with inspector's schedule
- Capture photos, video, audio
- Built-in historical asset information
- Configurable inspection report formats
- Cloud service synchronization with home system





# Mobile Implementation Considerations

- Information Technology Department willingness to support mobile devices
- Communicating adoption of mobile devices with Inspection Teams
- Data accessibility in the field
- Safety of your Inspectors
- Durability of Mobile Devices



# ContextCapture

- Affordable, precise 3D models
- Create 3D models of any scale from photographs
- Georeferenced 3D model generated automatically
- Models incorporated into numerous workflows





