



Five Components of Sprawl







Sprawl is not an accident.

It started as an idea.

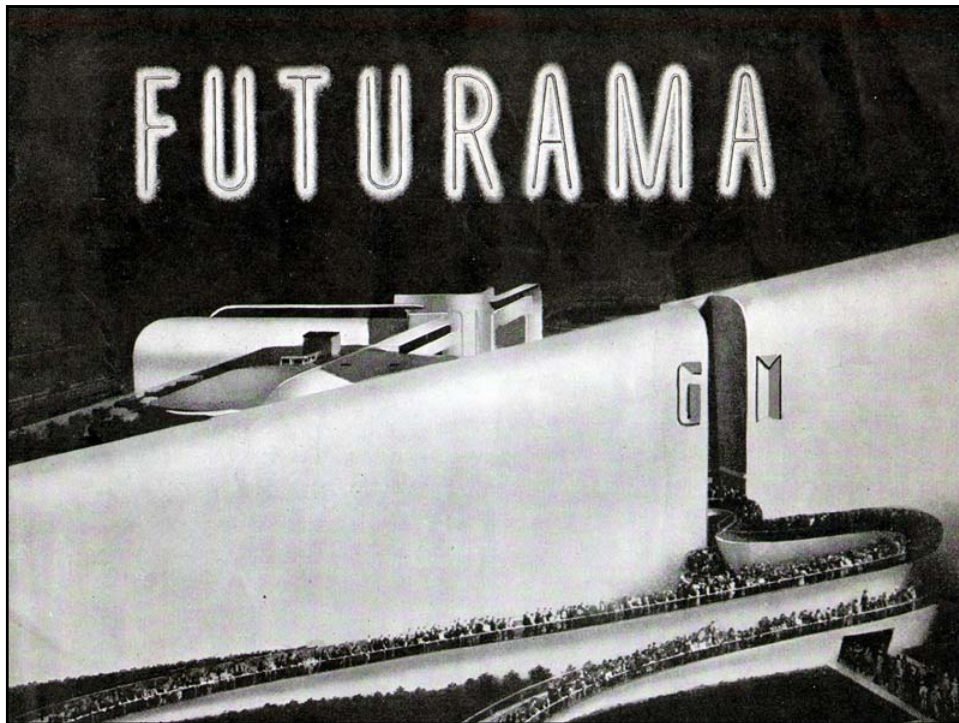


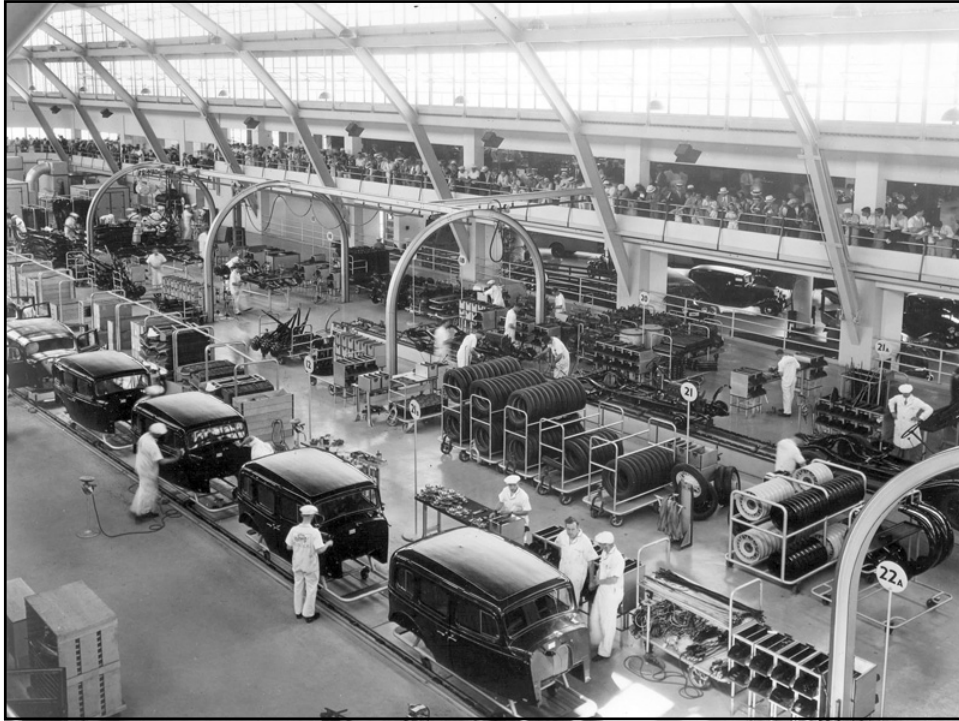


‘We shall **use up** tires, **wear out** road surfaces and gears, **consume** oil and gasoline. All of which will necessitate a great deal of work’

- Le Corbusier, *The Radiant City* (1935)

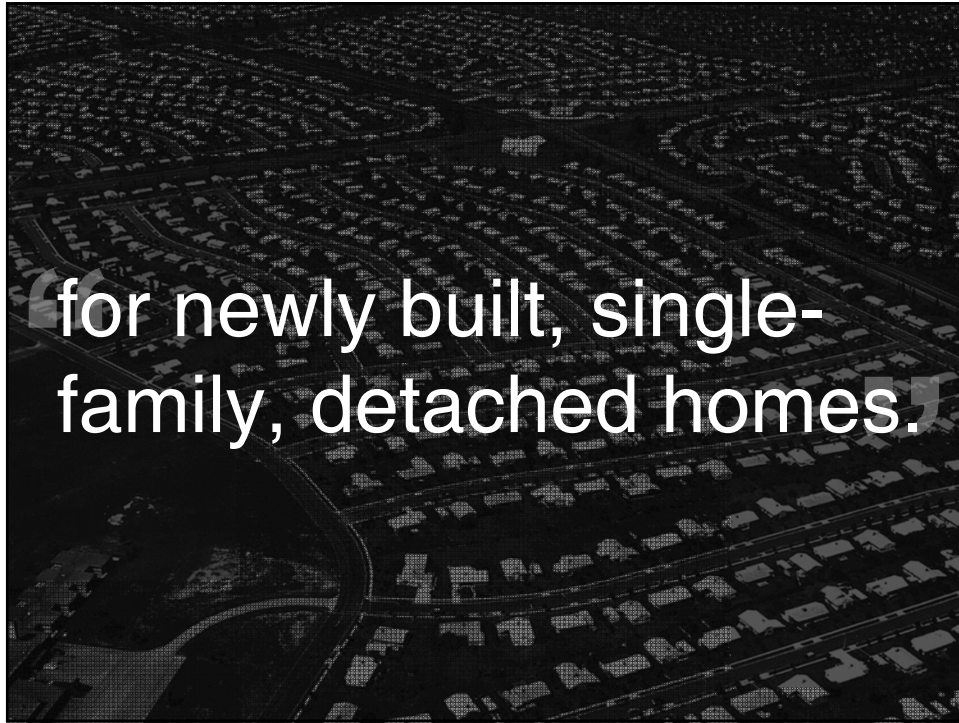
Had powerful advocates.

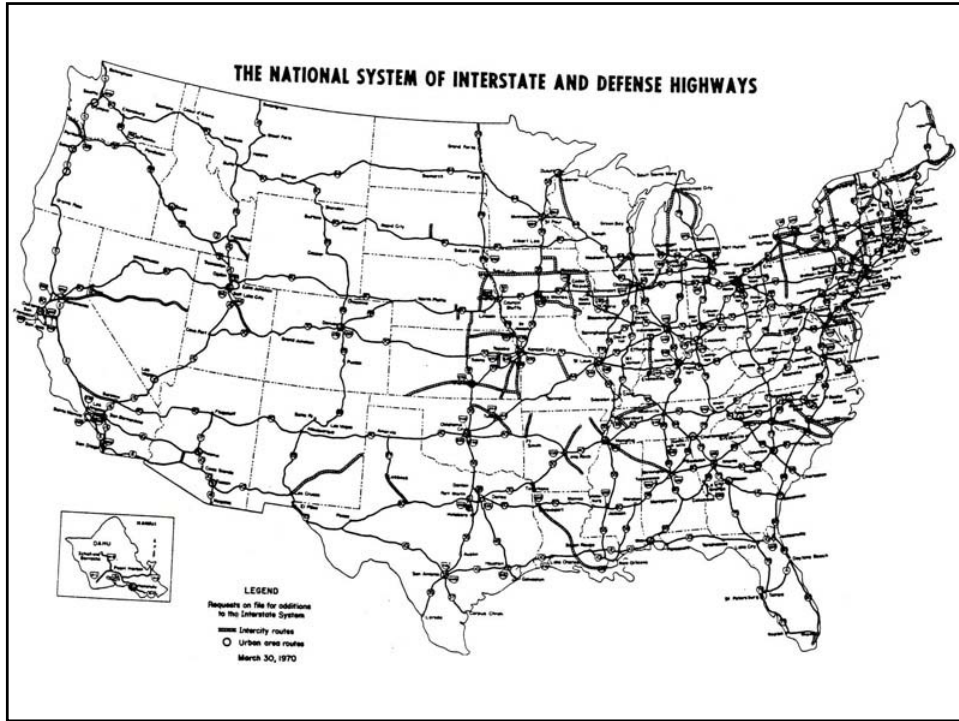


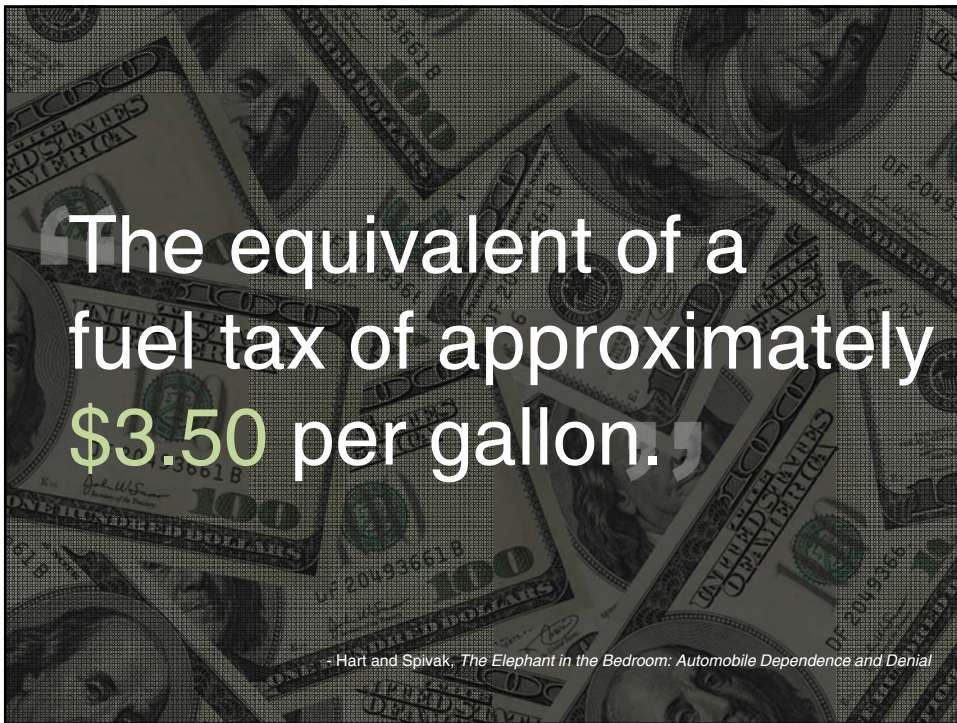


Enabled by Gov't subsidies.







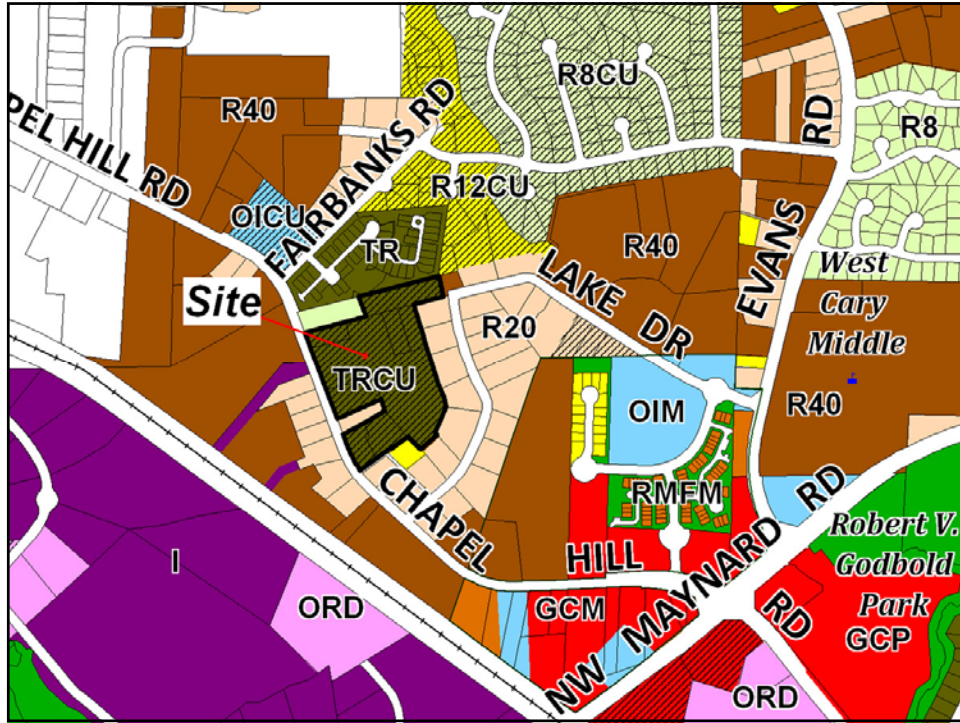




Approximately **\$5,000**
per car per year.

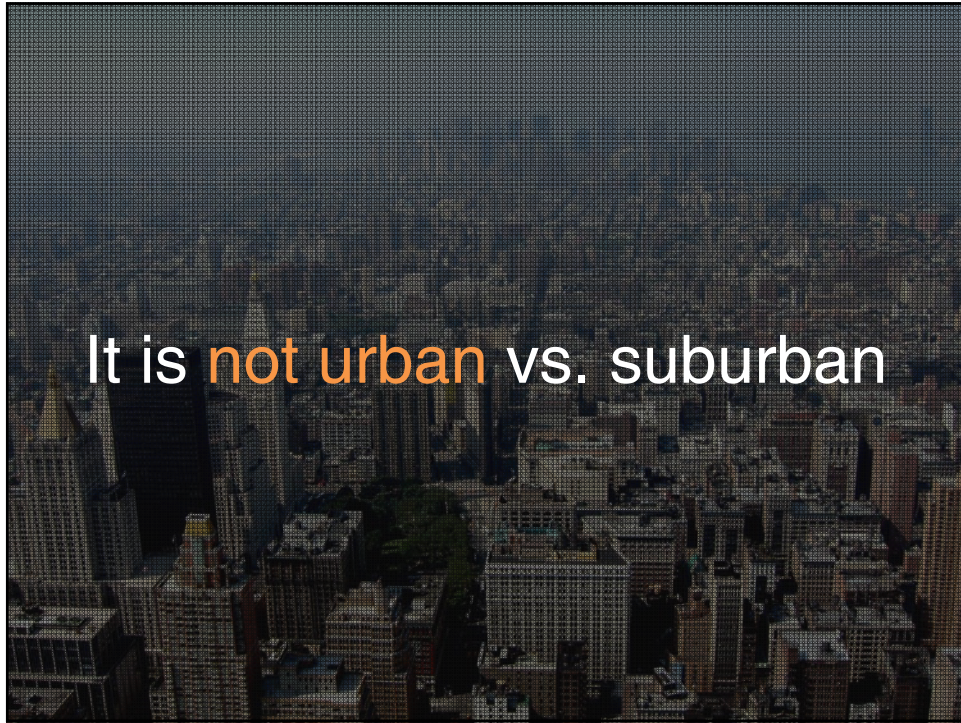
- Hart and Spivak, *The Elephant in the Bedroom: Automobile Dependence and Denial*

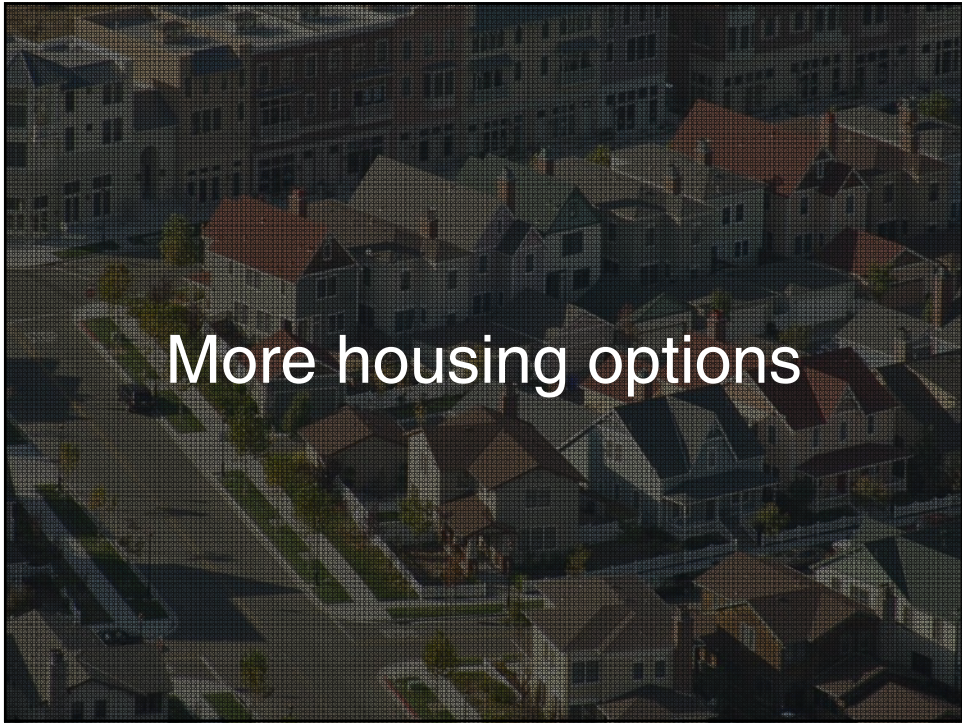
Enforced by Gov't regulations.

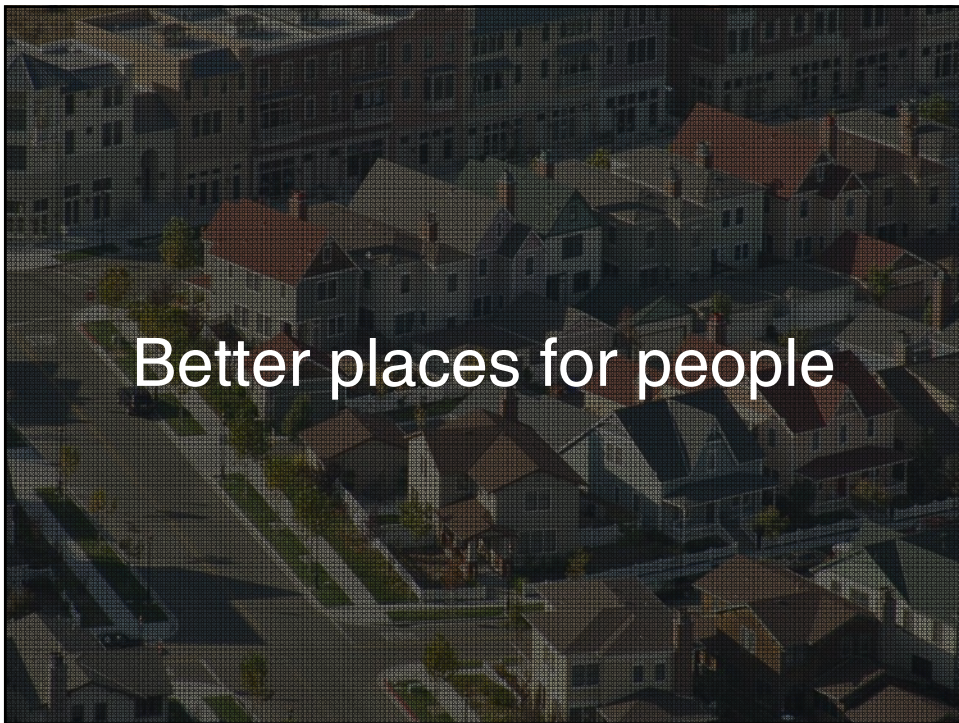




What is the alternative?

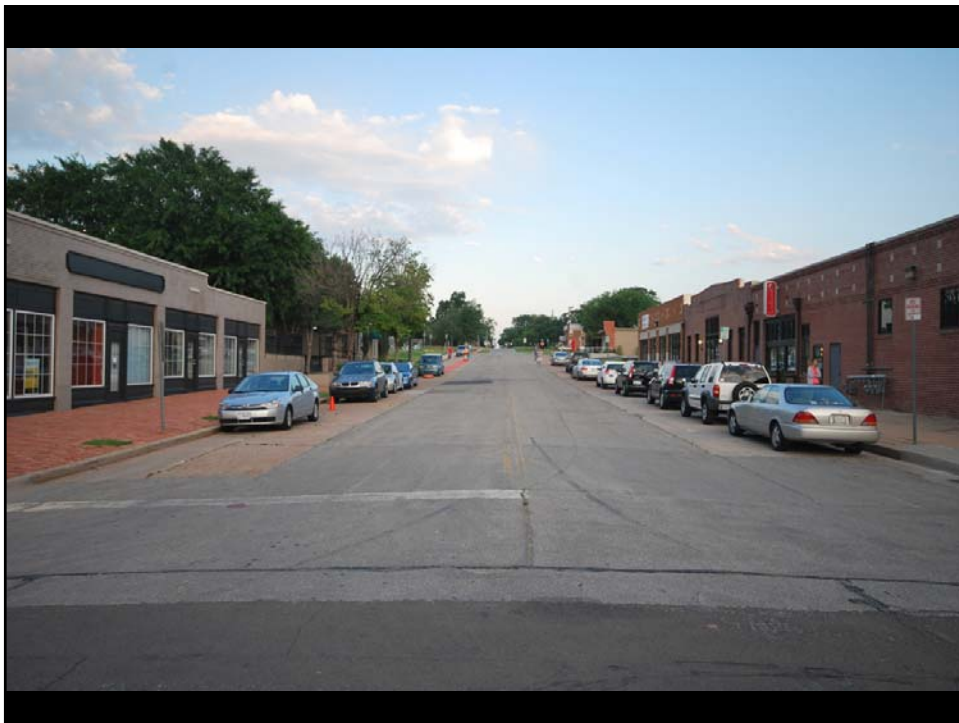




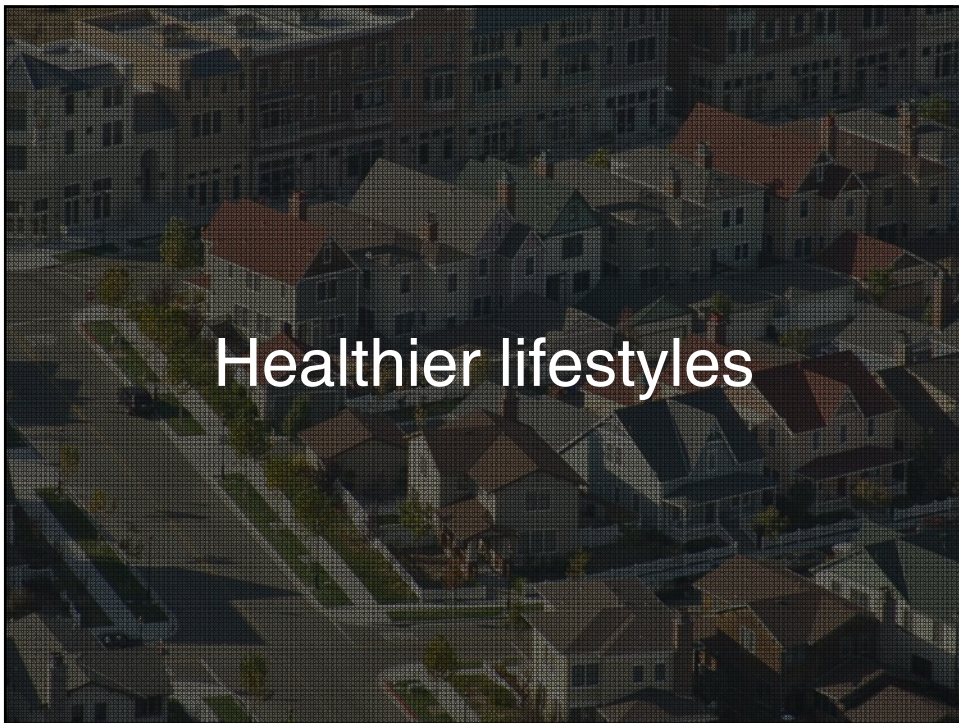










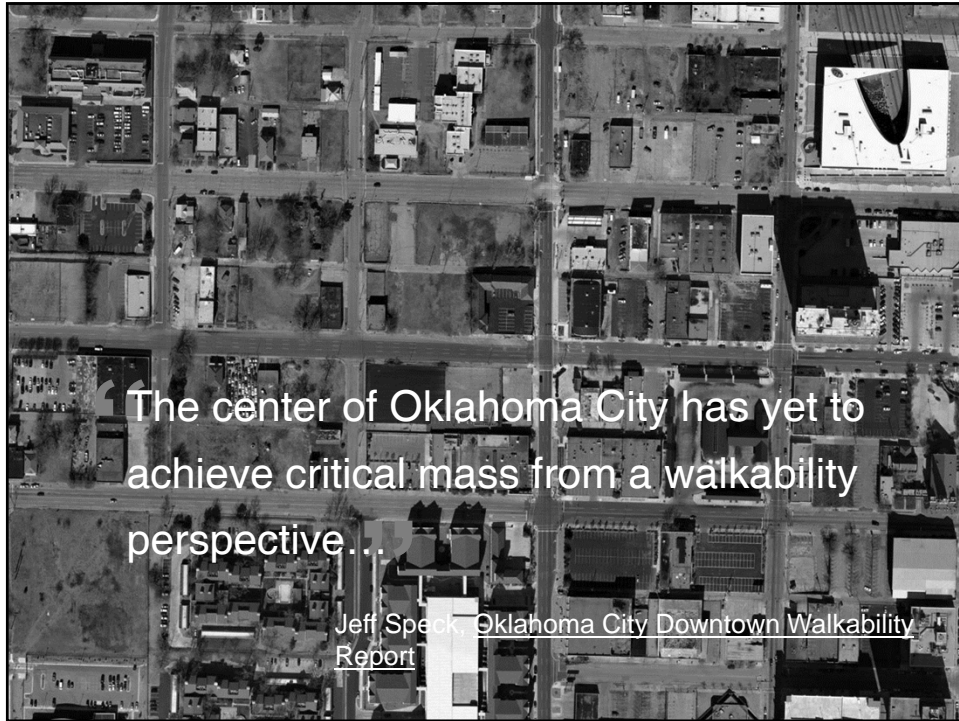













Oklahoma City is the worst city for pedestrians in the entire country.

Prevention Magazine and the American Podiatric Medical Association (APMA) April 2008



People who drive most
have obesity rates
3 times higher than
those that drive least

Lopez-Zetina J, Lee H, Fris R.
The link between obesity and the built environment
Health & Place 2006
(based on quartiles of drivers)



Thank you.

