

# Who are the missing children?

## The Thursday Group

Helen Bichan

John Cody

Margaret Faulkner

Maureen Gillon

# Why focus on missing children?

- Over several years our concern for the health and well being of children in Porirua has led us to ask “Who are missing out on the services they need?” and,
- “Who are the missing children?” as we sought information on numbers born, accessing Well Child Tamariki Ora and receiving health and other services.

# The aim of this workshop

- Is to enable participants to reflect on and share experiences of what works and what needs to change in their own areas of work for/with children.
- We hope to identify transferable concepts, make new connections and even develop plans for the future!
- We are here to learn from one another.

## Life course framework:

- From before conception to the age of six.
- Services available
- Transition points
- Wider setting

## Group work:

- Significant Questions & Indicators
- Identifying the children missing
- Looking for the children who were missing.
- Share experiences of successes and of problems in their own settings
- Reflect on the critical factors these illustrate
- From that we aim to identify practical action for the future - taking a strength based approach to promoting equity for children

# Life path diagram

- This is a brief outline – note some of its complex antecedents!
- It represents key stages on the child's life course with reference to generally available services for each stage.
- Note that some groups of children have greater need and/or may face more barriers to accessing services for a variety of reasons.
- Anecdotal reports of children in Porirua who were missing out on services alerted us to issues of equity – and set us searching for facts.

# Background

- What do we know?
- Do we believe what we are told?
- What led us to asking the questions in our context?

## **Examples:**

- barriers to access, to PHC
- Use of KCH in its place
- Examples around WCTO referrals
- Differences between Maori, Pacific and Other children
- Recognised barriers to access
- Poor or non-existent relationships/transfers/feedback etc
- Failure to share data
- Note recent govt pronouncement on changes which do address some of the areas of most concern but will take time to be implemented

# 'missing?' or 'missing out?'

- **Preliminary estimates of the number of children under 6 years not receiving significant aspects of primary health care**
  - This scheme is being developed as a first step towards a local review of primary health care provided to children under six years of age using information that is available to the public.
  - The numbers have mostly been calculated from rates E&OE. It has been assumed that 900 children have been born each year with 450 living in NZDep Q5 areas – approximately the situation in Porirua.
  - These estimates are offered as an initial basis for critique; careful criticism is required before they can be used with confidence. The frequent occurrence of the figure '270' is a coincidence; the information used was drawn from different sources.

<b>Indicator</b>	<b>Number p.a.</b>	<b>% of cohort</b>
From Lead Maternity Carers and the Six Week Check	Not available	
Not fully immunised at 6 months	270	30
Not enrolled in a Primary Health Organisation	270	5
Not receiving Well Child Tamariki Ora services	450	10
'B4 School' dental enrolments	280	30
'B4 School' hearing referrals	200	22
Acute Emergency Department attendances for infectious and respiratory conditions	268	---
Low income as a health factor	110	---
Housing as a factor in hospitalisation	[To be published early 2013]	

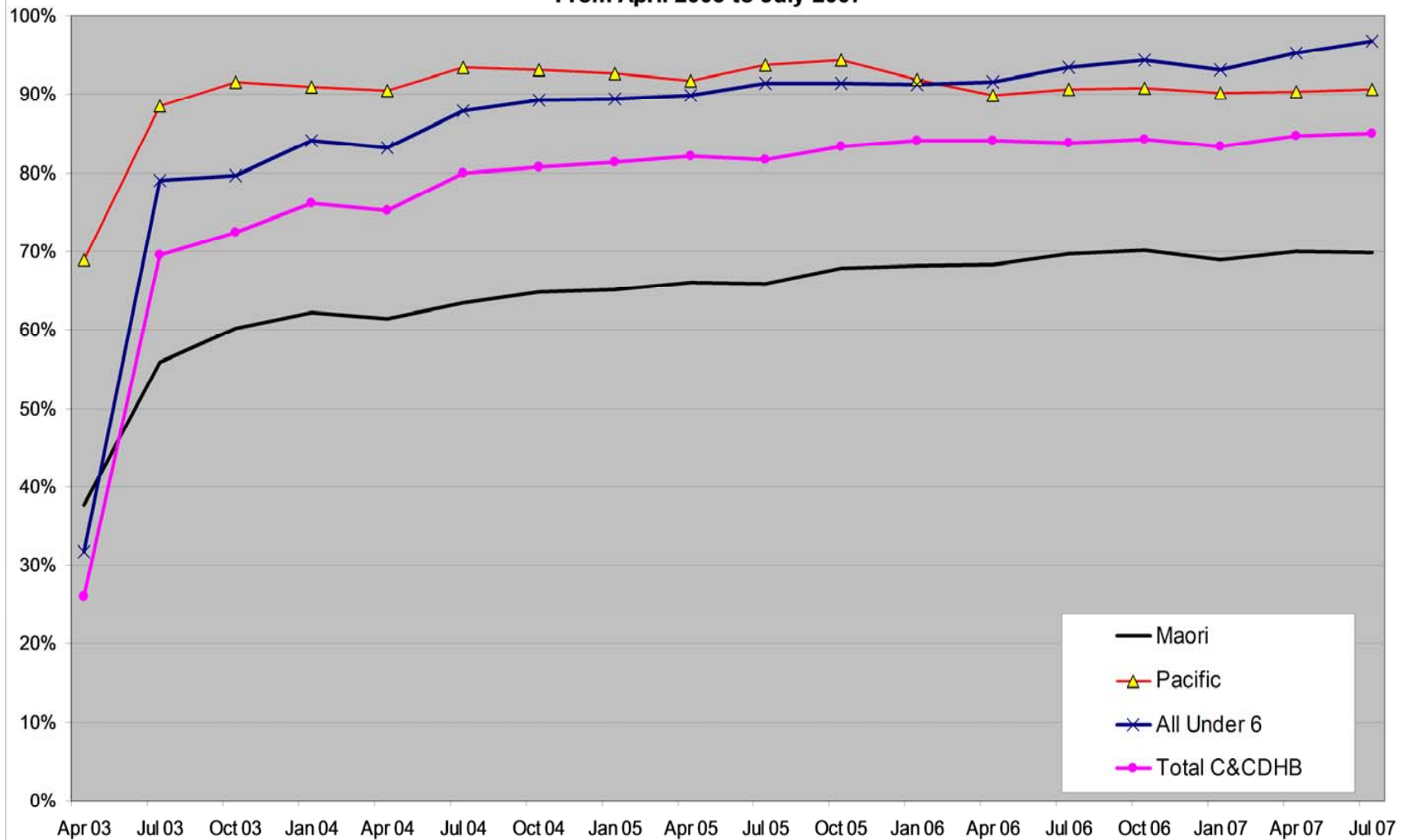


# ‘missing?’ or ‘missing out?’

## PHO Coverage for children under 6 years

From April 2003 to July 2007

Enrolment %



## Small Group work

“What is working well?”

“What problems or barriers do you face?”

“Practical suggestions for change”