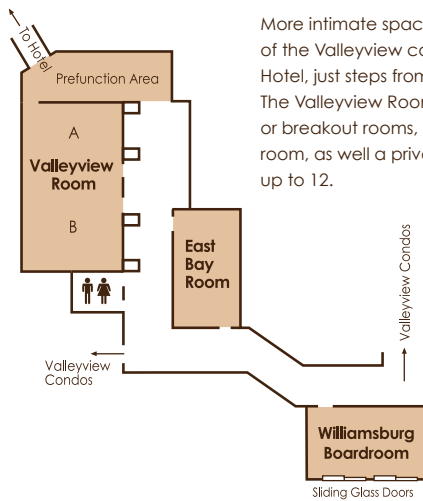
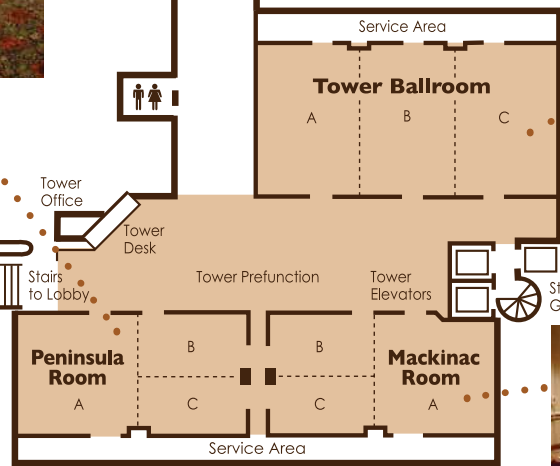
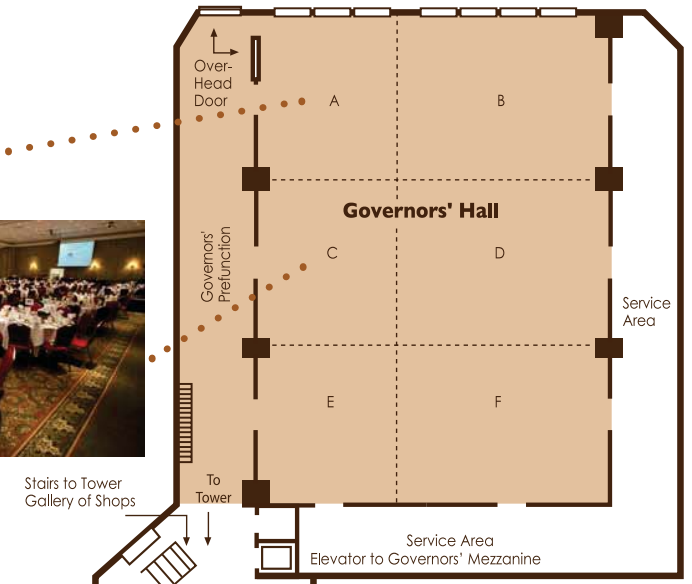


Lower Level

The largest venue for events at the Grand Traverse Resort & Spa is Governors' Hall on the lower level of the complex's north wing. This stately ballroom, with ceiling heights of 20 feet, can seat up to 2,250 people, or can be divided into many combinations of smaller meeting rooms. An impressive stairway leads to the prefunction area that is ideal for a reception area or cocktail party event. There are windows on the west wall of the hall (Governors' A & B), which showcase a view of the grounds and, through much of the year, a sunset during dinner hours.

Room	Dimension	Square Feet	Ceiling Height	Theatre	Class Room	U-Shape	Banquet	Exhibits	Hollow Square	Rec Style	Conf Style
Governors' Hall	168' x 115'	19,320	20'	2,250	1,200	—	1,500	140	—	2500	—
Governors' A, C or E	56' x 48'	2,688	20'	280	160	66	210	20	90	400	52
Governors' B, D or F	56' x 72'	4,032	20'	450	240	90	300	24	114	500	70
Governors' AB, CD or EF	56' x 113'	6,720	20'	750	400	108	550	47	132	1000	112
Governors' Prefunction	168' x 30'	5,376	20'	—	—	—	—	22	—	500	—
Mackinac Ballroom	64' x 33'	2,145	12'	210	120	60	130	16	78	300	58
Mackinac A	36' x 33'	1,188	12'	100	60	35	70	8	47	150	34
Mackinac B or C	29' x 18'	464	12'	40	25	20	30	—	24	75	22
Peninsula Ballroom	64' x 36'	2,145	12'	210	120	66	130	16	78	300	58
Peninsula A	36' x 36'	1,188	12'	100	60	35	70	8	47	150	34
Peninsula B or C	28' x 18'	464	12'	40	25	20	30	—	24	75	22
Tower Ballroom	90' x 51'	4,770	12'	500	300	80	300	34	126	500	80
Tower A, B or C	30' x 51'	1,590	12'	150	100	45	110	10	54	250	46
Tower Prefunction	90' x 30'	2,700	12'	—	—	—	—	16	—	—	—
Valleyview Room	22' x 37'	814	9'	75	45	36	60	—	42	50	30
Williamsburg Boardroom	22' x 18'	396	8'	—	—	—	12	—	—	12	12
East Bay Room	25' x 16'	540	9'	35	24	10	20	—	10	30	22



More intimate space for groups of 30-70 is located on the lower level of the Valleyview condominium complex. Its close proximity to the Hotel, just steps from the main complex, is ideal for private events. The Valleyview Room can be partitioned into two distinct meeting or breakout rooms, and there is a separate room, the East Bay room, as well as a private boardroom that can accommodate up to 12.

