

# DECREASING TRANSFERS TO THE EMERGENCY ROOM

Ensuring that Key Stakeholders Buy In  
And PARTICIPATE

# OUR PASSION... OUR VALUES JARLETTE

- Everything we do is with  
Commitment and Passion
- We treat people with respect
- We are proactively accountable and responsible
- We strive to do the right thing
- To make an outstanding difference in the lives of others



# NIGHT AND DAY

2009

- A total of 140 resident transfers to the emergency room (in a 140 bed facility)

2012

- 110 transfers to the emergency room (a decrease of 21% over 3 years)



# STAKEHOLDERS

- Residents
- Family members
- Staff
- Medical staff
- Management Team



# RESIDENTS

- Most residents still have the mind-set that when they are ill, they need to see a doctor  
IMMEDIATELY
- knowledge=power!
- Discussed program with Resident Council
- Display board in front lobby
- Pamphlet in welcome package for new residents



# FAMILY MEMBERS

- Met with Family Council
- Spoke with nursing staff regarding having a plan before you speak with family members

example: Your loved one is having symptoms \_\_\_\_\_. We are planning to manage them in the home by doing \_\_\_\_\_. We will update you in \_\_\_\_ amount of time, unless anything changes. Is this okay with you?

- Poster board in front lobby to highlight the risks associated with an unnecessary hospital transfer



# STAFF

- Make staff feel confident
- Had RN(EC) host a refresher on physical assessments
- Workload
- Post Emergency Room Lookback



# MEDICAL STAFF

- Physicians buying into the program
- Safety
- Nursing Home Capabilities Check List
- Professional Advisory Committee
- New protocol for treatment of pneumonia  
1 gram ceftriaxone im; then avelox 400 od x 7  
days.



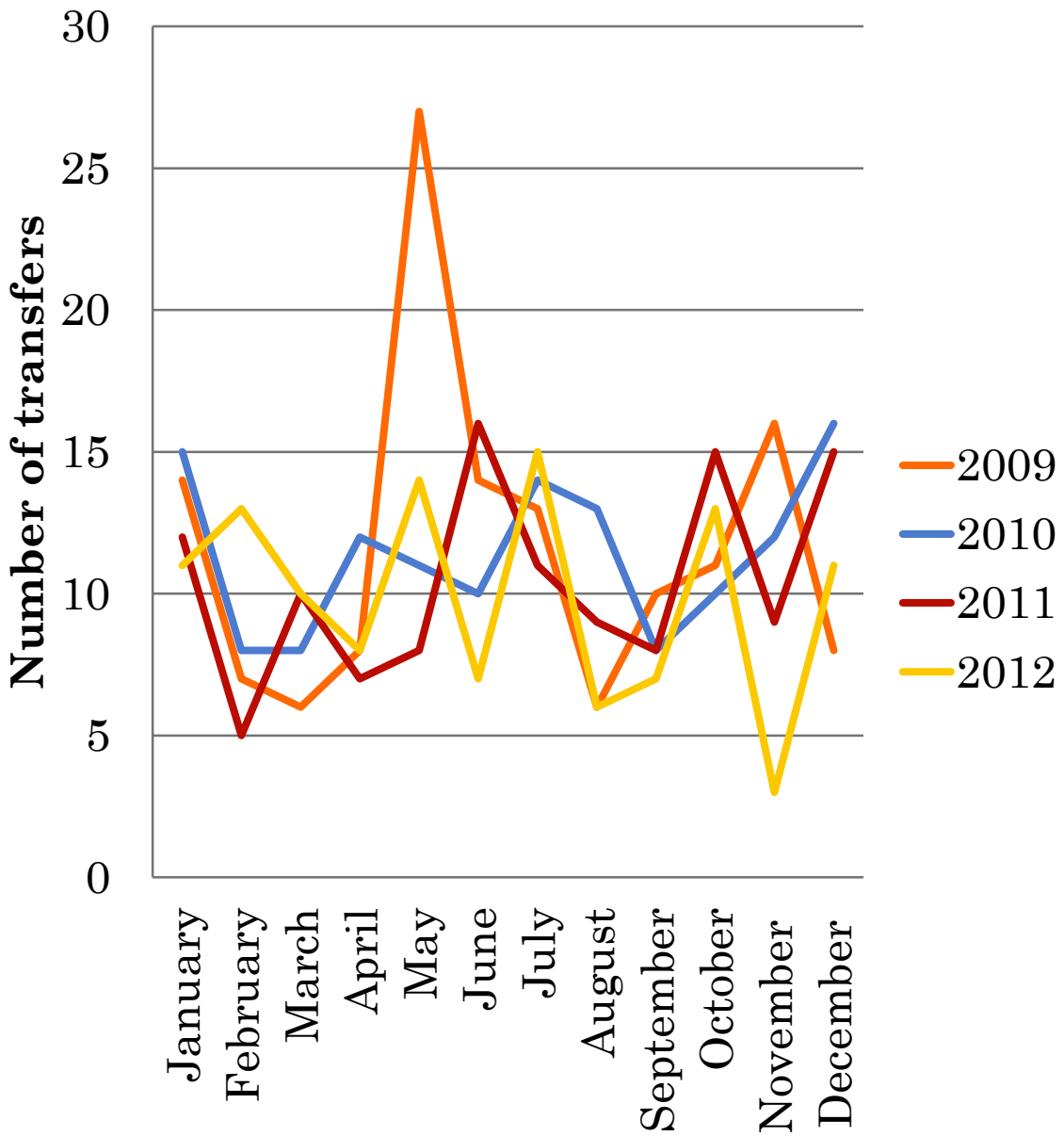


# MANAGEMENT TEAM

- Notifying the Nurse Manager on call
- Tracking numbers
- Meeting with staff
- Education



# ER Transfers

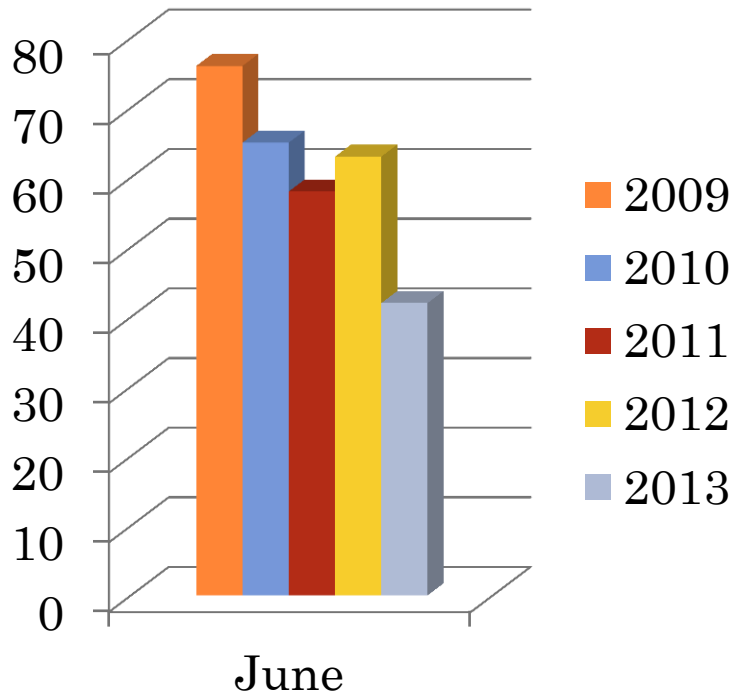


DATA COLLECTION 2009-2012

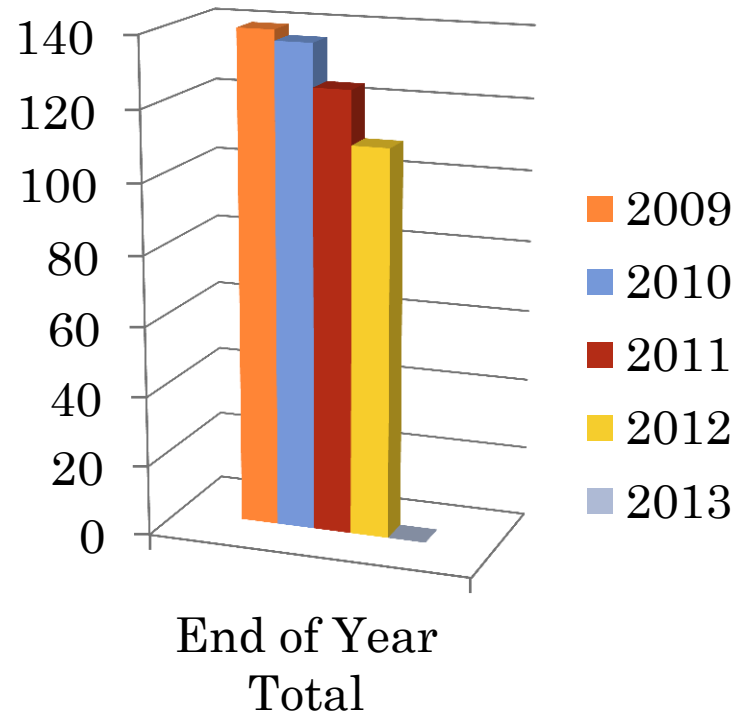


# NUMBERS IN JUNE AND END OF YEAR 2009-2013

## June Data



## Year End Data



QUESTIONS?

