

VOGUEknitting
LIVE!



KNIT. Sweater

Design by Pat Olski

Loose-fitting turtleneck pullover with intarsia letters.

SHORT ROW WRAP & TURN (w&t)

on RS row (on WS row)

- 1) Wyib (wyif), sl next st purlwise.
- 2) Move yarn between the needles to the front (back).
- 3) Sl the same st back to LH needle. Turn work. One st is wrapped.
- 4) When working the wrapped st, insert RH needle under the wrap and work it tog with the corresponding st on needle.

3-NEEDLE BIND-OFF

- 1) Hold right sides of pieces together on two needles. Insert third needle knitwise into first st of each needle, and wrap yarn knitwise.
- 2) Knit these two sts together, and slip them off the needles. *Knit the next two sts together in the same manner.
- 3) Slip first st on 3rd needle over 2nd st and off needle. Rep from * in step 2 across row until all sts are bound off.

NOTES

- 1) Use a separate bobbin for each letter in chart. Do not carry yarn across back of work.
- 2) When changing colors, twist yarns on WS to prevent holes in work.

BACK

With smaller needles and MC, cast on 80 (88, 96, 106, 116) sts.

Row 1 *K1, p1; rep from * to end.

Rep row 1 for k1, p1 rib for 2½"/6.5cm. Change to larger needles.

Beg with a RS row, work in St st (k on RS, p on WS) until piece measures 15 (15, 15, 14½, 14)"/38 (38, 38, 37, 35.5)cm from beg, end with a WS row.

Armhole shaping

Bind off 2 (3, 4, 6, 7) sts at beg of next 2 rows, 2 (2, 3, 5, 6) sts at beg of next 2 rows.

Dec row (RS) K1, ssk, k to last 3 sts, k2tog, k1—2 sts dec'd.

Rep dec row every other row 1 (2, 3, 4, 6) times more—68 (72, 74, 74, 76) sts.

Work even in St st until armhole measures 7 (7½, 8, 8½, 9)"/18 (19, 20.5, 21.5, 23)cm, end with a WS row.

Neck and short-row shoulder shaping

Row 1 (RS) K22 (24, 24, 24, 24) sts, place center 24 (24, 26, 26, 28) sts on st holder, join 2nd ball of yarn and k8 (10, 10, 10, 10), w&t.

Row 2 (WS) P8 (10, 10, 10, 10).

Row 3 K18 (20, 20, 20, 20) picking up previous wrap, w&t.

Row 4 P18 (20, 20, 20, 20).

Row 5 K to end, picking up wrap.

Row 6 P to end.

Place 22 (24, 24, 24, 24) left shoulder sts on stitch holder.

With WS facing, join yarn at neck edge to work right shoulder sts as foll:

Row 2 (WS) P8 (10, 10, 10, 10), w&t.

Row 3 K8 (10, 10, 10, 10).

Row 4 P18 (20, 20, 20, 20) picking up wrap, w&t.

Row 5 K18 (20, 20, 20, 20).

Row 6 P to end, picking up wrap.

Place 22 (24, 24, 24, 24) right shoulder sts on st holder.

FRONT

Work as for back until piece measures 10½ (11, 11½, 11½, 11½)"/26.5 (28, 29, 29, 29)cm from beg, end with a WS row.

Beg chart

Note Chart is off center by 1 stitch.

Row 1 (RS) K10 (14, 18, 23, 28), place marker, work chart over 59 sts, place marker, k to end.

Row 2 (WS) P11 (15, 19, 24, 29), sl marker, work chart over 59 sts, sl marker, p to end.

Cont to work chart in this way through row 22, then cont with MC only to end of piece, AT SAME TIME, when piece measures 15 (15, 15, 14½, 14)"/38 (38, 38, 37, 35.5)cm from beg, end with a WS row and work armhole shaping as for back—68 (72, 74, 74, 76) sts.

Work even in St st until armhole measures 5 (5½, 6, 6½, 7)"/12.5 (14, 15, 16.5, 18)cm, end with a WS row.

Neck shaping

Next row (RS) K28 (30, 30, 30, 30), place center 12 (12, 14, 14, 16) sts on st holder, join 2nd ball of yarn and k to end.

Working both sides at once, bind off 3 sts at each

SKILL LEVEL



MATERIALS

- 12 (13, 15, 16, 18) 1¼oz/50g balls (each approx 92yd/85m) of Schachenmayr Original Merino Extrafine 85 (wool) in #299 black (MC)
- 1 ball in #237 pink (A)
- One pair each sizes 8 and 10 (5 and 6mm) needles, OR SIZE TO OBTAIN GAUGE
- One size 8 (5mm) circular needle, 16"/40cm long
- Stitch markers
- Stitch holders
- Bobbins (optional)

SIZES

Sized for Small, Medium, Large, X-Large and XX-Large and shown in size Medium.

KNITTED MEASUREMENTS

- Bust 37½ (41½, 45, 50, 54½)"/95 (105.5, 114, 127, 138.5)cm
- Length 23 (23½, 24, 24, 24)"/58.5 (59.5, 61, 61, 61)cm
- Upper arm 13¾ (14½, 15½, 16½, 17½)"/35 (37, 39.5, 42, 44.5)cm

GAUGE

17 sts and 22 rows = 4"/10cm over St st using larger needles.

TAKE TIME TO CHECK GAUGE.

*For all pattern-related inquiries please visit www.vogueknitting.com

neck edge once, 2 sts once, 1 st once—22 (24, 24, 24, 24) sts rem each side. Work even until armhole measures same as back to shoulder, end with a WS row.

Short-row shoulder shaping

Row 1 (RS) K22 (24, 24, 24, 24) sts on first side, k8 (10, 10, 10, 10) on 2nd side, w&t.

Row 2 (WS) P8 (10, 10, 10, 10).

Row 3 K18 (20, 20, 20, 20) picking up previous wrap, w&t.

Row 4 P18 (20, 20, 20, 20).

Row 5 K to end, picking up wrap.

Row 6 P to end.

Place 22 (24, 24, 24, 24) right shoulder sts on st holder.

With WS facing, join yarn at neck edge to work left shoulder sts as foll:

Row 2 (WS) P8 (10, 10, 10, 10), w&t.

Row 3 K8 (10, 10, 10, 10).

Row 4 P18 (20, 20, 20, 20) picking up wrap, w&t.

Row 5 K18 (20, 20, 20, 20).

Row 6 P to end, picking up wrap.

Place 22 (24, 24, 24, 24) left shoulder sts on st holder.

SLEEVES

With smaller needles, cast on 46 (48, 48, 50, 50) sts. Work in k1, p1 rib as for back for 3"/7.5cm.

Next row (RS) Knit, dec'ing 10 sts evenly across—36 (38, 38, 40, 40) sts.

Purl 1 row. Change to larger needle. Work 2 rows in St st.

Inc row (RS) K1, M1, k to last st, M1, k1—2 sts inc'd.

Rep inc row every 4th row 3 (5, 10, 14, 16) times, then every 6th row 7 (6, 3, 0, 0) times—58 (62, 66, 70, 74) sts.

Work even until piece measures 15 (15, 15½, 15½, 16)"/38 (38, 39.5, 39.5, 40.5)cm from beg, end with a WS row.

Cap shaping

Bind off 2 (3, 4, 6, 7) sts at beg of next 2 rows, 2 (2, 3, 5, 6) sts at beg of next 2 rows.

Dec row (RS) K1, ssk, k to last 3 sts, k2tog, k1—2 sts dec'd.

Rep dec row every other row 1 (2, 3, 4, 6) times more—46 (46, 44, 38, 34) sts. Purl 1 row. Bind off.

FINISHING

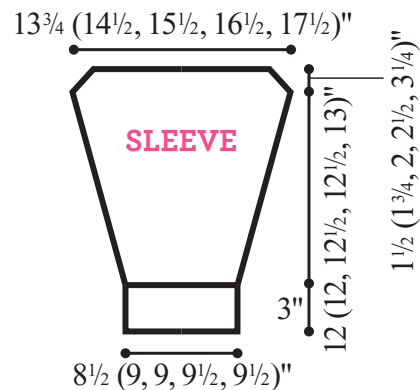
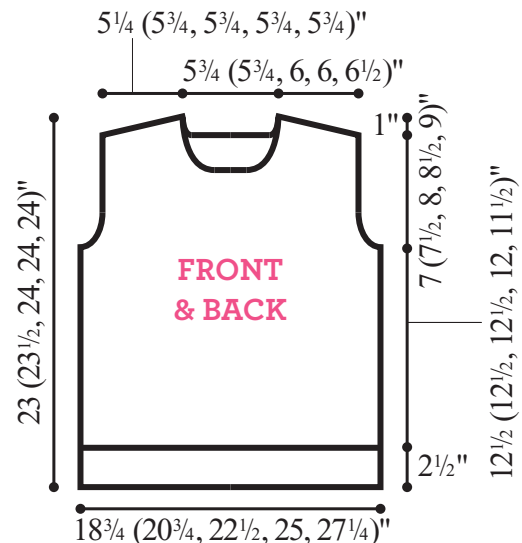
Block pieces lightly to measurements. Join shoulders using 3-needle bind-off. Set in sleeves. Sew side and sleeve seams.

Turtleneck

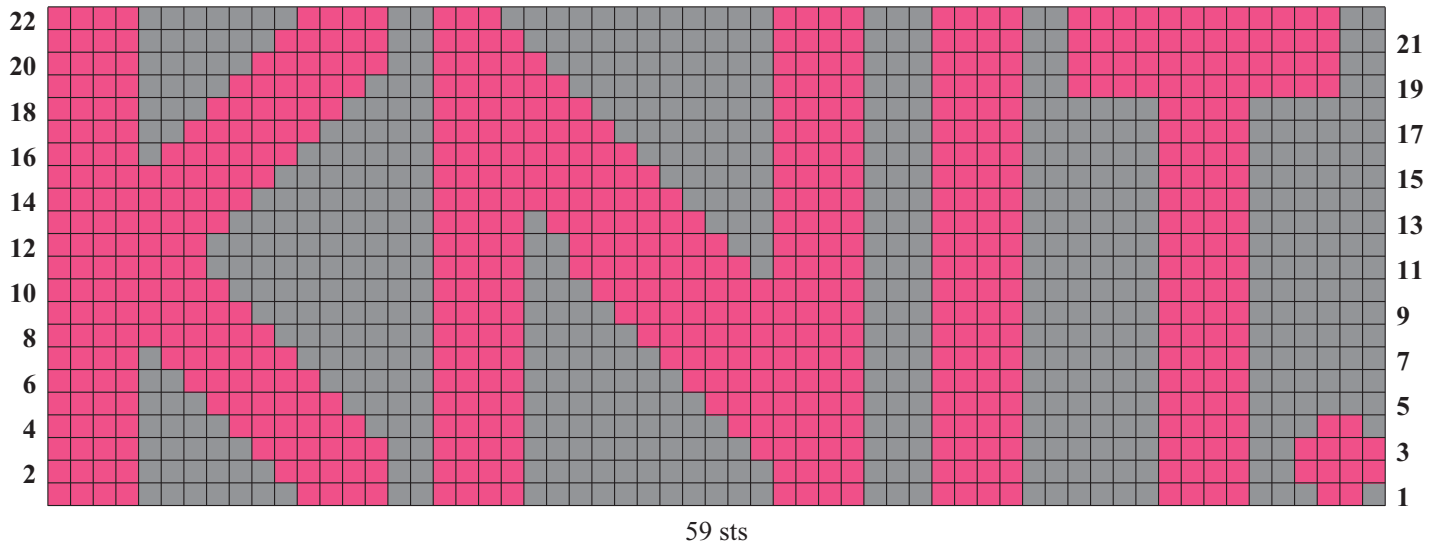
With RS facing, size 8 (5mm) circular needle and MC, beg at left shoulder seam, pick up and k 14 sts along shaped left front neck edge, k12 (12, 14, 14, 16) sts from front neck holder, pick up and k 14 sts along shaped right front neck edge, 4 sts along back right neck edge, k24 (24, 26, 26, 28) sts from back neck holder, pick up and k 4 sts from back left neck edge—72 (72, 76, 76, 80) sts. Join and place marker for beg of rnd.

Rnd 1 *K1, p1; rep from * around.

Rep rnd 1 for k1, p1 rib until turtleneck measures 8"/20.5cm. Bind off loosely in rib. ❖



*For all pattern-related inquiries please visit www.vogueknitting.com



Color Key ■ black (MC) ■ pink (A)

*For all pattern-related inquiries please visit www.vogueknitting.com