

PLA WA STATE CONFERENCE



16 - 17 JUNE 2016, ESPLANADE HOTEL FREMANTLE

3 Concurrent Streams • 18 Sessions • Trade Show • 4 Technical Tours

PLA WA Awards Ceremony

Members - \$550+GST Non-members - \$650+GST

www.eiseverywhere.com/ehome/plawa16/welcome/

- Registrations close 19 May

SPONSORED BY



Play for life!

MASTERS OF CEREMONIES



TREVOR JENKINS

Conference MC

One of Australia's most respected radio and television sporting broadcasters and presenters. 30 years as sports presenter on ABC



SAM LONGLEY

Awards of Excellence MC

Actor, Comic, Writer, Director, Sam is one of Western Australia's favourite entertainers working in television, movies, and theatre for over 20 years.

CONFERENCE SPEAKERS



THE RIPPLE EFFECT: HOW DO WE PLAN FOR HEALTHY COMMUNITY GROWTH?

Jacinta McCann, Executive Vice President, AECOM



LEADERSHIP FOR THE PEOPLE BEHIND THE PLACES & SPACES

*Dr Troy Hendrickson
Executive Education / Global Educator, Speaker and Consultant
Curtin University*



COMMUNITY BENEFITS OF AQUATIC & RECREATION CENTRES

Dr John Tower, Senior Lecturer of Recreation & Sport Management, Victoria University



7 SENSES DAY: CREATING LONG TERM VISION THROUGH SHORT TERM INTERVENTIONS

Tobias Volbert, Project Development Manager & Landscape Architect, Playscape Creations



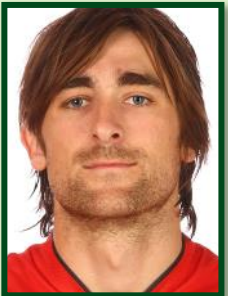
EFFECTIVE ISSUES MANAGEMENT & STAKEHOLDER COMMUNICATION

Tony Dawe, Senior Account Director, Professional Public Relations



JUSTIFY OR BUST: EXPLORING THE BENEFITS OF PARKS

*Amalie Wright, Director, Landscapology
Author, Future Parks: Imagining Tomorrow's Urban Park*



ENGAGEMENT THROUGH SPORT & ALTERNATIVE ACTIVITIES

Brad Robbins, Inspired Living Foundation; Former Wildcats Captain



A SUSTAINABLE FUTURE FOR COASTAL AUSTRALIA

Mayor Barry Sammels, City of Rockingham ; Chair of Australian Coastal Councils Association



A PLACE BASED APPROACH TO BUILDING RESILIENCE

Liz Johnstone, Associate Director - Sustainability; Rockefeller 100 Resilient Cities



WHAT WILL IT MEAN WHEN THE FULL IMPACT OF OUR AGEING COMMUNITIES BEGINS TO EMERGE?

Dr Ann Zubrick, COTA (WA) Council on the Ageing WA



DESIGNING RESILIENT FACILITIES FOR THE FUTURE

Rory Martin, Research & Sustainability Leader, DWP/Suters



THE TURNING POINT: HOW TREES MOVED FROM IRRELEVANCE TO PRE-EMINENCE.

Councillor Chris Cornish, City of Bayswater



SOCIAL INFRASTRUCTURE BENCHMARKING - THE RESULTS ARE IN

David Lanfear, Associate Director, Davis Langdon



SPORT & RECREATION & PUBLIC HEALTH

Dr May Carter, Senior Policy Officer - Recreation, Department of Sport and Recreation



**GLYPHOSATE USE IN PUBLIC
PARKLANDS**

*Willow Warren, Public Health
Directorate of the Department of
Health*



**BENCHMARKING: WHAT IS IT?
WHAT DO YOU DO WITH IT?
HOW CAN IT CHANGE THE WAY
YOU OPERATE?**

Karl Mallet, City of Stirling

**FOR PRESENTER'S ABSTRACTS AND BIOGRAPHIES PLEASE GO TO
WWW.EISEVERYWHERE.COM/EHOME/PLAWA16/401415/**

TECHNICAL TOURS

FRIDAY 17th JUNE, Esplanade Hotel Fremantle

TOUR ONE: OPEN SPACE PLANNING AND ACTIVATION

8.30am to 4pm

Site 1: Carawatha Park (2015 PLA WA Award of Excellence Winner)
Site 2: Mills Park: 24 Hectares of Leisure Opportunities
Site 3: Kings Park Soldier Application
Site 4: Russell Brown Adventure Park

TOUR TWO: FACILITIES IN THE SPOTLIGHT

8.45am to 4pm

Site 1: State Netball Centre
Site 2: Bold Park Aquatic Centre
Site 3: Mandurah Aquatic and Recreation Centre

TOUR THREE: THINKING BIG: RECYCLING AND REVITALISATION

9am to 4pm

Site 1: Richgro: Anaerobic Digestion and Recycling Plant -
Energy, Waste, Water
Site 2: Mills Park: 24 Hectares of Leisure Opportunities

TOUR FOUR: SPORT, SURF, PLAY

9am to 3pm

Site 1: Wembley Sports Park
Site 2: City of Perth Surf Club
Site 3: West Australian Institute of Sport (WAIS)

For more information on the tours please go to www.eiseverywhere.com/ehome/plawa16/tours
Tours have limited places and will sell out. Conference registration includes one tour.

PLA WA STATE CONFERENCE PROGRAM

THURSDAY 16th JUNE, Esplanade Hotel Fremantle

8.00am	Registration Opens - Arrival Tea and Coffee			<i>Southern Cross Lobby</i>
PLENARY SESSION - SIRIUS ROOM				
8.30am	Welcome and Overview of the Conference - Trevor Jenkins, MC Address from PLA WA President - Rachel Thorpe, PLA WA President Welcome to Country			
8:45am	<i>THE RIPPLE EFFECT: HOW DO WE PLAN FOR HEALTHY COMMUNITY GROWTH?</i> Keynote Speaker: Jacinta McCann Executive Vice President, AECOM			
9:30am	MORNING TEA & TRADE SHOW - SOUTHERN CROSS LOBBY			
	Concurrent 1	Concurrent 2	Concurrent 3	
10.00am	<i>JUSTIFY OR BUST: EXPLORING THE BENEFITS OF PARKS</i> Amalie Wright, Landscapology	<i>SOCIAL INFRASTRUCTURE BENCHMARKING - THE RESULTS ARE IN</i> David Lanfear, Davis Langdon <i>SPORT & RECREATION AND PUBLIC HEALTH</i> Julie Rutherford, Department of Sport and Recreation	<i>EFFECTIVE ISSUES MANAGEMENT AND STAKEHOLDER COMMUNICATION</i> Tony Dawe, Professional Public Relations (PPR) & Cheyne Cameron, City of Subiaco	
10:45am	<i>THE TURNING POINT: HOW TREES MOVED FROM IRRELEVANCE TO PRE- EMINENCE.</i> Councillor Chris Cornish, City of Bayswater	<i>BUILDING REGIONAL RESILIENCE THROUGH OPEN SPACE ACTIVATION</i> Samantha Stewart, City of Karratha	<i>BENCHMARKING: WHAT IS IT? WHAT DO YOU DO WITH IT? HOW CAN IT CHANGE THE WAY YOU OPERATE?</i> Karl Mallet, City of Stirling	
11:30am	<i>A SUSTAINABLE FUTURE FOR COASTAL AUSTRALIA</i> Mayor Barry Sammels, City of Rockingham	<i>WHAT WILL IT MEAN WHEN THE FULL IMPACT OF OUR AGEING COMMUNITIES BEGINS TO EMERGE?</i> Ann Zubrick, COTA	<i>ENGAGEMENT THROUGH SPORT AND ALTERNATIVE ACTIVITIES</i> Brad Robbins, Inspired Living Foundation	

12.15pm	LUNCH & TRADE SHOW - SOUTHERN CROSS LOBBY		
	Concurrent 1	Concurrent 2	Concurrent 3
1.15pm	MANAGING BUSHLAND UNDER THE NEW BUSHFIRE MANAGEMENT GUIDELINES Tim McNaught & Jackson Parker, Department of Fire and Emergency Services	MILLS PARK: SIX STARS Paul McAllister, City of Gosnells	COMMUNITY BENEFITS OF AQUATIC AND RECREATION CENTRES Dr John Tower, Victoria University
2.00pm	GLYPHOSATE USE IN PUBLIC PARKLANDS: THE FACTS AND REPUTABLE SOURCES OF INFORMATION Willow Warren, Department of Health	A PLACE BASED APPROACH TO BUILDING RESILIENCE Liz Johnstone, Rockefeller 100 Resilient Cities	SPORT TRENDS Presenter TBA
2:45pm	BREAK & TRADE SHOW - SOUTHERN CROSS LOBBY		
3.15pm	CARRYING CAPACITY OF SPORTS GROUNDS Presenter TBA	7 SENSES DAY: CREATING LONG TERM VISION THROUGH SHORT TERM INTERVENTIONS Tobias Volbert, Playscape	DESIGNING RESILIENT FACILITIES FOR THE FUTURE Rory Martin, DWP/Suters
4.00pm	LEADERSHIP FOR THE PEOPLE BEHIND THE PLACES AND SPACES Keynote Speaker: Troy Hendrickson		
4.45pm	Official Conference Close - Trevor Jenkins, MC		
5.00pm-6.00pm	PLA WA Awards of Excellence: Food and drinks will be served. Sam Longley, MC		<i>Pleiades Room</i>
6:00pm - 6.30pm	SUNDOWNER		<i>Pleiades Room</i>

16 - 17 JUNE 2016, ESPLANADE HOTEL FREMANTLE

3 Concurrent Streams • 18 Sessions • Trade Show • 4 Technical Tours

PLA WA Awards Ceremony

Members - \$550+GST Non-members - \$650+GST

www.eiseverywhere.com/ehome/plawa16/welcome/

- Registrations close 19 May