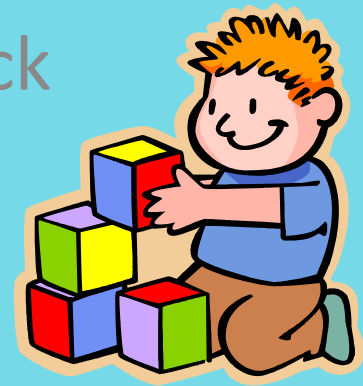




'Here we go round the Mulberry Bush'

The Challenges of reaching high need
four year olds for the B4 School Check

Chris Rice & Kate Calvert

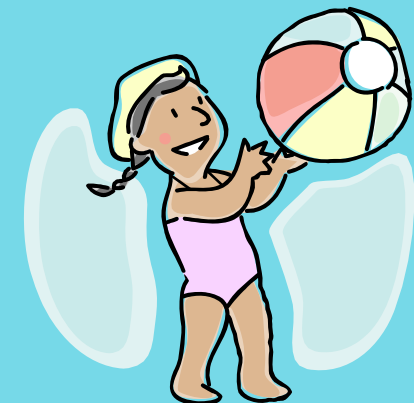




Reaching high need 4 year olds



- Summary of aims of the B4 school Check
- Challenges
- How we have increased uptake
- Future plans





B4 School Check



“To promote health and well-being in preschool children and identify behavioural, developmental or other health concerns that may adversely affect the child’s ability to learn in the school environment”

Open to all
Voluntary

B4 school check – handbook for practitioners –
Ministry of Health 2008





Background



- The b4 school check is a nationwide programme offering free health and development checks for 4 year olds
- It is the 8th core contact of the Wellchild Tamariki Ora Schedule and replaces the 5 year old check
- Aims to identify and address any health, behavioural, social or developmental concerns, which could affect the child's ability to learn
- Could lead to referrals to a number of agencies

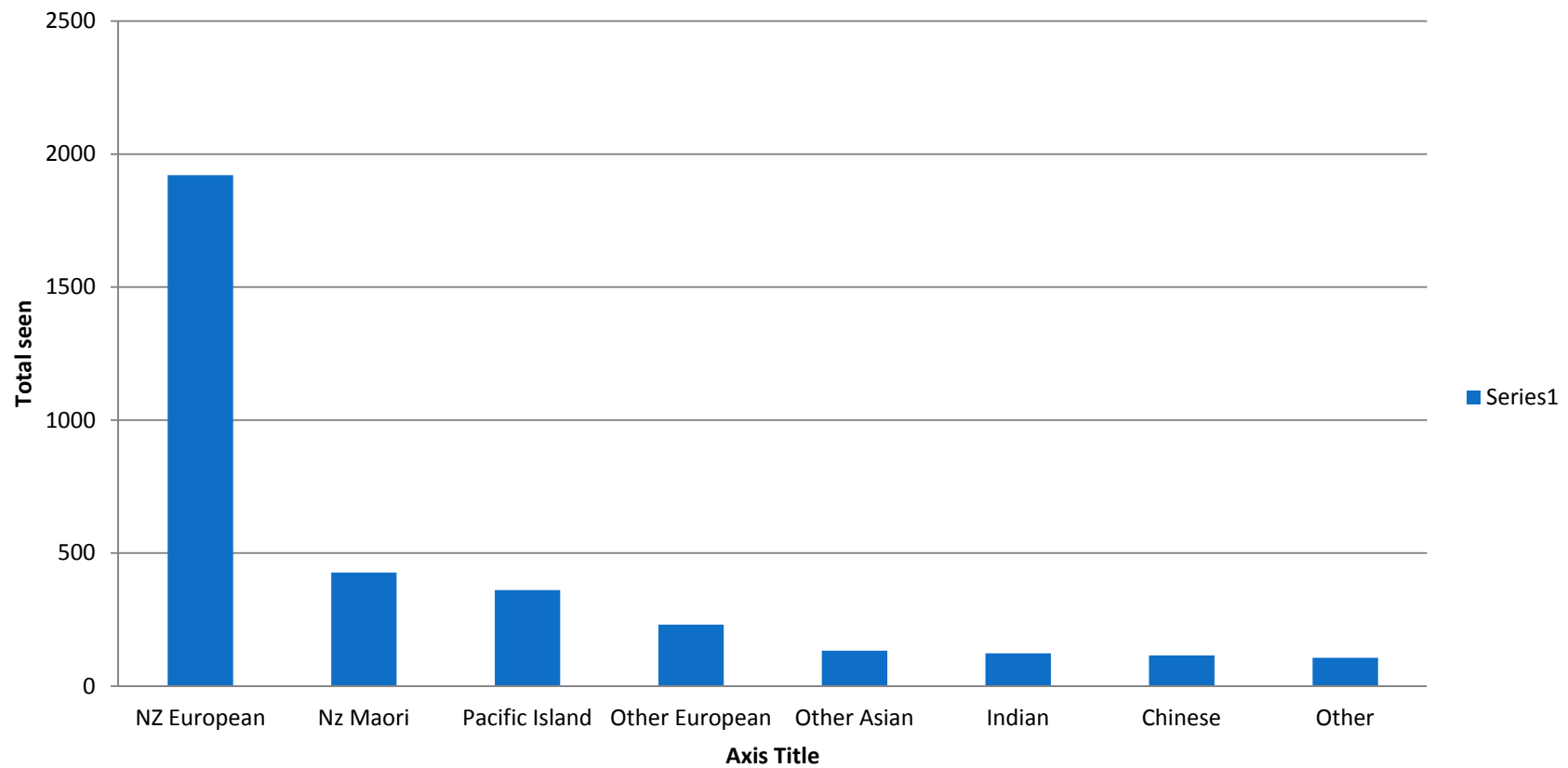




Ethnicity breakdown



B4 school Check Ethnicity 2011/12





Who do we See?



- Targets are 80% of all eligible 4 year olds in the DHB
- 80% of all eligible Quintile 5 4 year olds (high need)

We have reached the high need targets since we started in 2009 but want to be more efficient





Where?



- Early childhood education settings
- Community Settings
- In home





Does one way work for all?



Invite to attend – appointment confirmed in writing - see family on the day.

In Q5 areas....invite – not seen – invite again-not seen-invite again- round and round we go!

Change our approach!





Connectivity



- Community Worker huge local knowledge employed by the programme
- Face to face invitations to attend
- Decrease in language barrier issues
- Cultural connections
- Ability to offer help with transport
- Clinics more a 'drop in 'basis





How Do We Find Them?

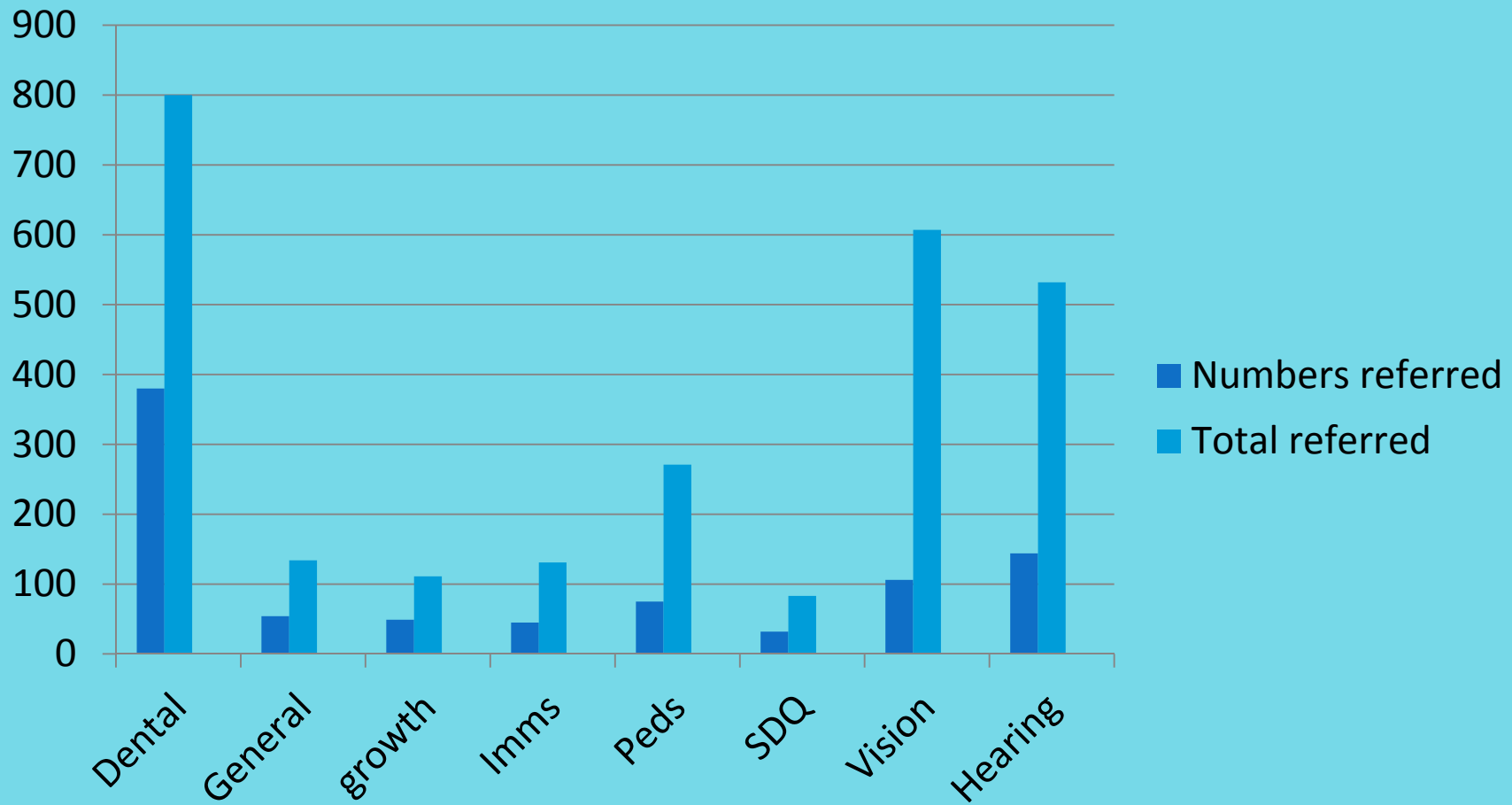


- Kindergartens in areas of high deprivation
- Aoga Amata
- Have 2 Iwi partners in Porirua who see their own clients and visit Te Kohanga Reo
- Wellington Kindergarten Association Participation project
- Local knowledge

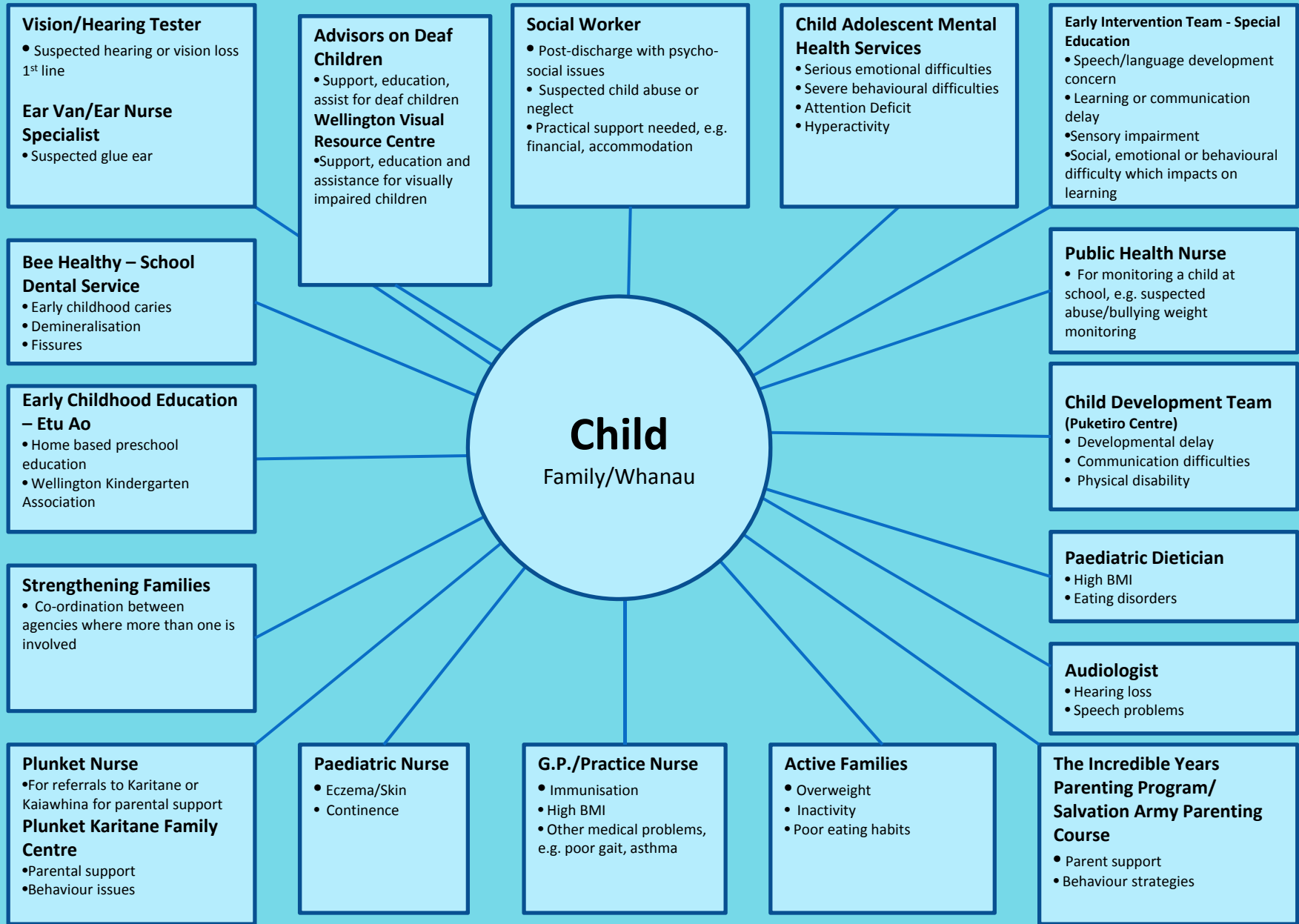




Q5 Referrals made



Referral Agencies for B4 School Checks





New Initiatives



- New Clinics e.g. WINZ
- Working with other providers
- Newsletters e.g. GPs
- BNZ flyers





Future considerations



- Pressure on services B4 school check refers on to
- Sharing 'Best Practice' for B4 School across Aotearoa New Zealand
- Interpreting services – cost vs need





In Conclusion



- Increase in high need clinics
- Flexible booking system
- Face to face invitations
- Transport assistance

- Further ideas welcome.....

