

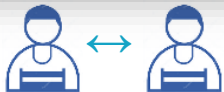
# Direction of Logistics Blockchain Platform in Hyperconnected Era

2019. 06. 12.  
SAMSUNG SDS  
Dr. Simon Han

**SAMSUNG SDS**

# The Hyperconnected Era is Coming

Hyperconnectivity = Communication among



Spread of Internet, global communication network, and smart phone with various applications



# Need of Hyperconnectivity in Supply Chain Network

Physical + Financial + Declarable = Global Trade



# Expansion of Blockchain-Based Global trade ecosystem

Blockchain trade network is continued to expand by including local/global government authorities and companies

## Ocean Shipping Blockchain Consortium

2017



B2B

Shipper, Ocean Carrier, Inland Transporter, Terminal, Forwarder, Bank, Insurance, etc

- ☑ Call for blockchain consortium
  - Verify feasibility of blockchain technology by implementing actual cargo-based pilot project

## Korean Customs Export Declaration and Logistics Service

2018



B2B

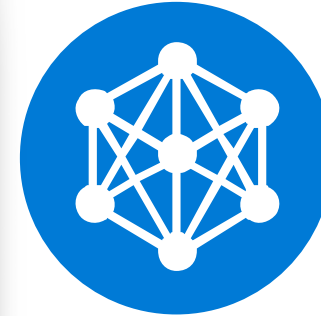
B2G

Korea Customs Service, Korea Trade Insurance Corporation, Export-Import Bank of Korea, etc

- ☑ Connect between B2B and B2G
  - Include export declaration process and government authorities into blockchain trade ecosystem

## Global Trade Network

2019



B2B

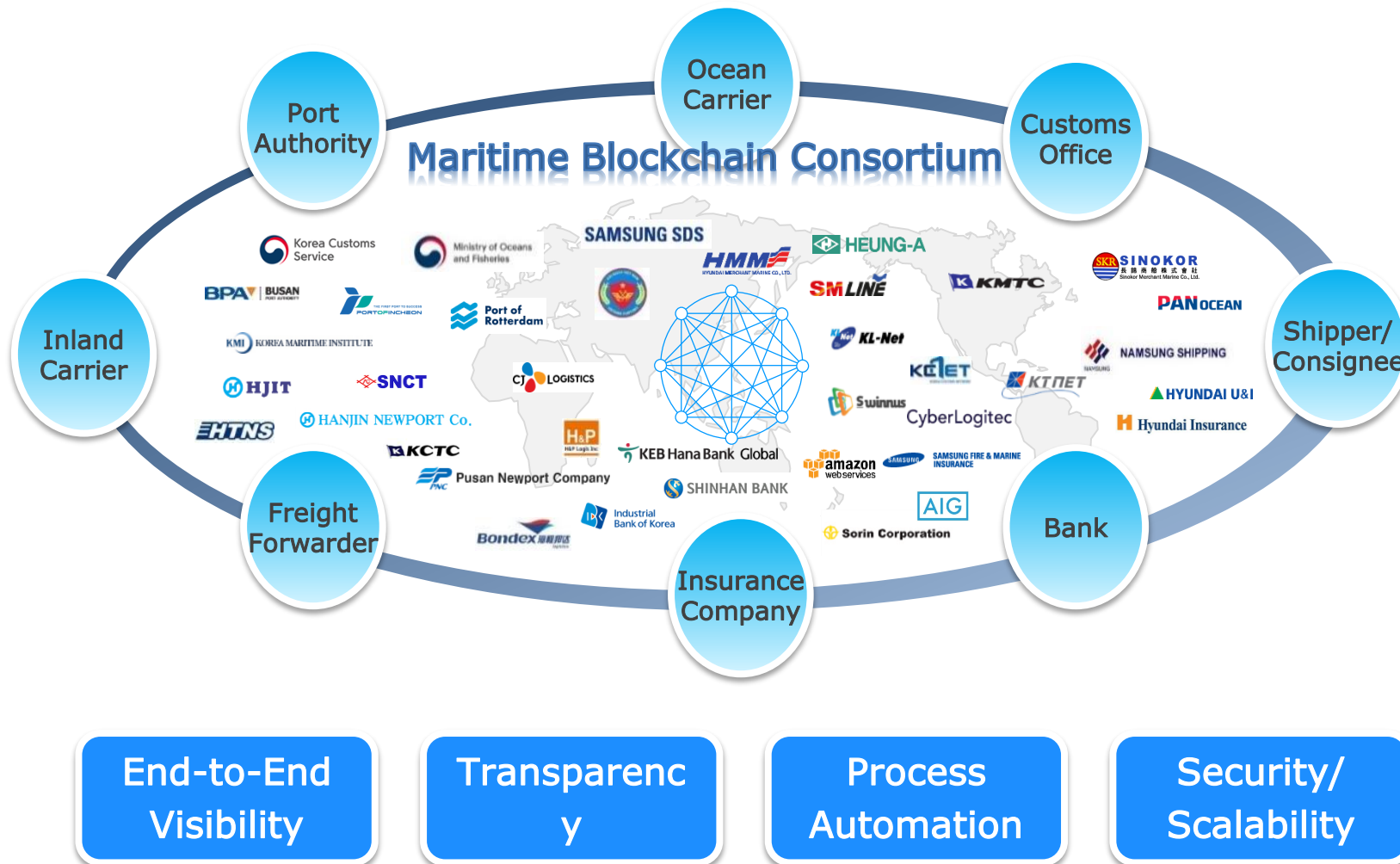
B2G

GLOBAL

Interconnect between Korea and Netherlands

- ☑ Expand to global network
  - Collaborate with major overseas organizations and companies for global trade network

# Ocean Shipping Blockchain Consortium (in 2017)



**[Pilot Scopes]**

- Commercial Invoice
- Booking Confirmation
- Inland Transportation
- Shipping Instruction
- Bill of Lading
- Customs Clearance
- Tracking using IoT
- Open Account Transaction
- NEGO
- Insurance Policy

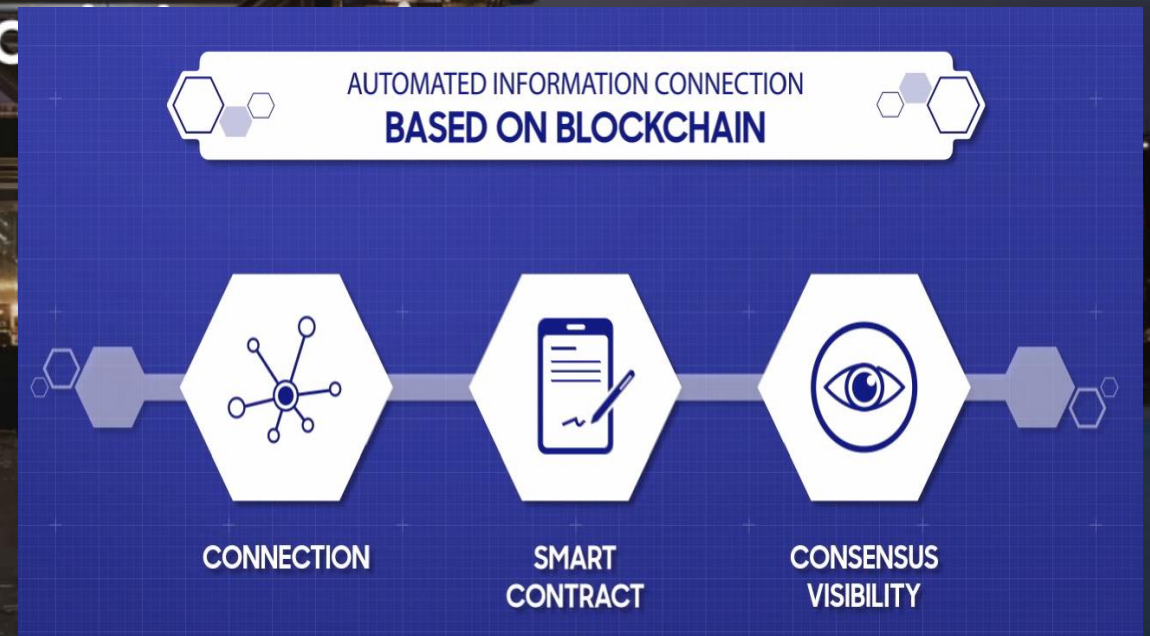
[Routes: from Busan, Korea]

- Dalian/Qingdao, China
- Hong Kong
- Haiphong/Cat Lai, Vietnam
- Bangkok, Thailand
- Nhava Sheva, India
- Jebel Ali, UAE
- Long Beach, U.S.A
- Rotterdam, Netherlands

# Blockchain project of Korea Customs Service (in 2018)

Government Agency	 Korea Customs Service	Blockchain Platform Provider	<b>SAMSUNG SDS</b>
Public Institution	 Korea Financial Telecommunications & Clearings Institute  <b>Ksure</b> KOREA TRADE INSURANCE CORPORATION		
Exporter /Importer	 HYUNDAI GLOVIS  DAELIM CORPORATION  SEBANG SEBANG GLOBAL BATTERY  DAEHA CABLE Chemkorea CO., LTD		
Bank	 KB Kookmin Bank  KEB Hana Bank Global  SHINHAN BANK  Industrial Bank of Korea		
Insurer	 SAMSUNG SAMSUNG FIRE & MARINE INSURANCE  AIG  Hyundai Insurance  DB Insurance		
Ocean Carrier	 HMM  SINOKOR 中國郵政輪船有限公司 Shanghai Merchant Marine Co., Ltd.  SM LINE  K MTC  NAMSUNG SHIPPING  PAN OCEAN  EUKOR Car Carriers Inc. We deliver  TONGJIN SHIPPING SERVICE CO.,LTD		
Terminal Operator	 PNC PUSAN NEWPORT Co., Ltd.  HUTCHISON PORTS BUSAN  BPT BUSAN PORT TERMINAL  SM LINE GWANGYANG TERMINAL		
Freight Forwarder Haulier Warehouse	 pantos LOGISTICS  EHTNS  SEBANG SEBANG EXPRESS  EUNSAN SHIPPING & LOGISTICS CO., LTD  Star Cluster  LOTTE GLOBAL LOGISTICS  HANJIN  KCTC  KEL  ICBL  SEBANG ELS SOLUTION EUNSAN CONTAINER TERMINAL		
Customs Broker	SHINHAN DAEIN WOOSHIN KOOKJE HAPDONG KUMHWA INCHEON PRIME HAPDONG		

- The blockchain-based export delaration & logistics service
- Over 60 blockchain nodes
- Stakeholders: government agency, ocean carriers, shipper, terminal operators, banks, insurers, ...





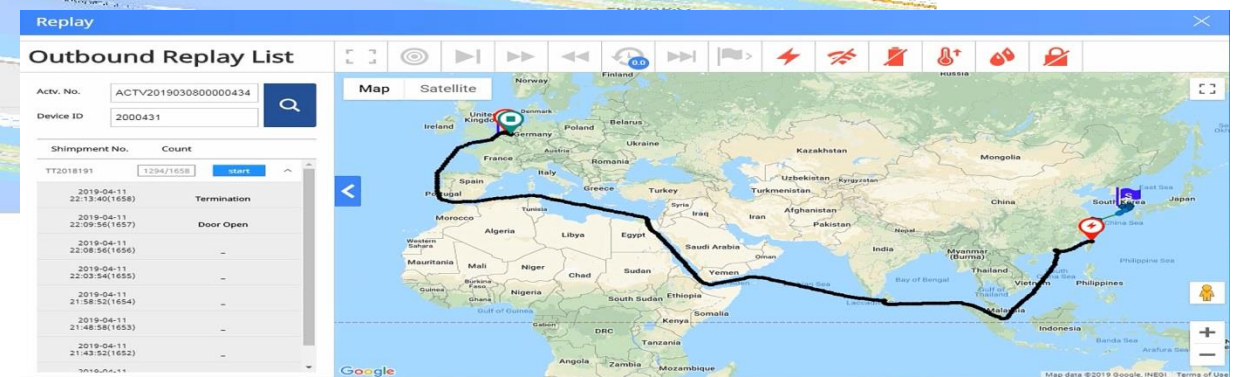
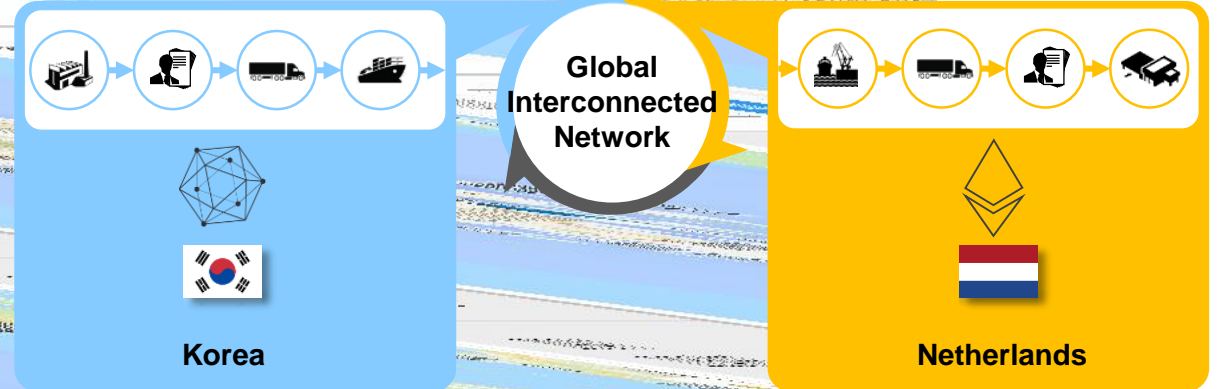
# Interconnection between Different Blockchains (2019)

Interconnectivity pilot test between Korea and Netherlands blockchain networks proved that the interconnectivity platform enables safe trade document exchange and integrity of trade documents

## Service Concept



## Pilot



# Future of Blockchain Platform

## Blockchain-Based Hyperconnected Ecosystem





# Q & A

**Dr. Simon Han**  
**[simon306.han@samsung.com](mailto:simon306.han@samsung.com)**

**For more information,**

**Contact point :** [cello@samsung.com](mailto:cello@samsung.com)

**Cello website :** [www.Cellologistics.com](http://www.Cellologistics.com)

**Cello Facebook :** [www.Facebook.com/cellologistics](http://www.Facebook.com/cellologistics)

**Cello LinkedIn :** [www.Linkedin.com/company/cellologistics](http://www.Linkedin.com/company/cellologistics)

**Cello YouTube :** [www.Youtube.com/c/cellologistics](http://www.Youtube.com/c/cellologistics)

**Samsung SDS website :** [www.Samsungsds.com](http://www.Samsungsds.com)