



ALL AREAS ACCESS



Corporate Profile & Capability Statement



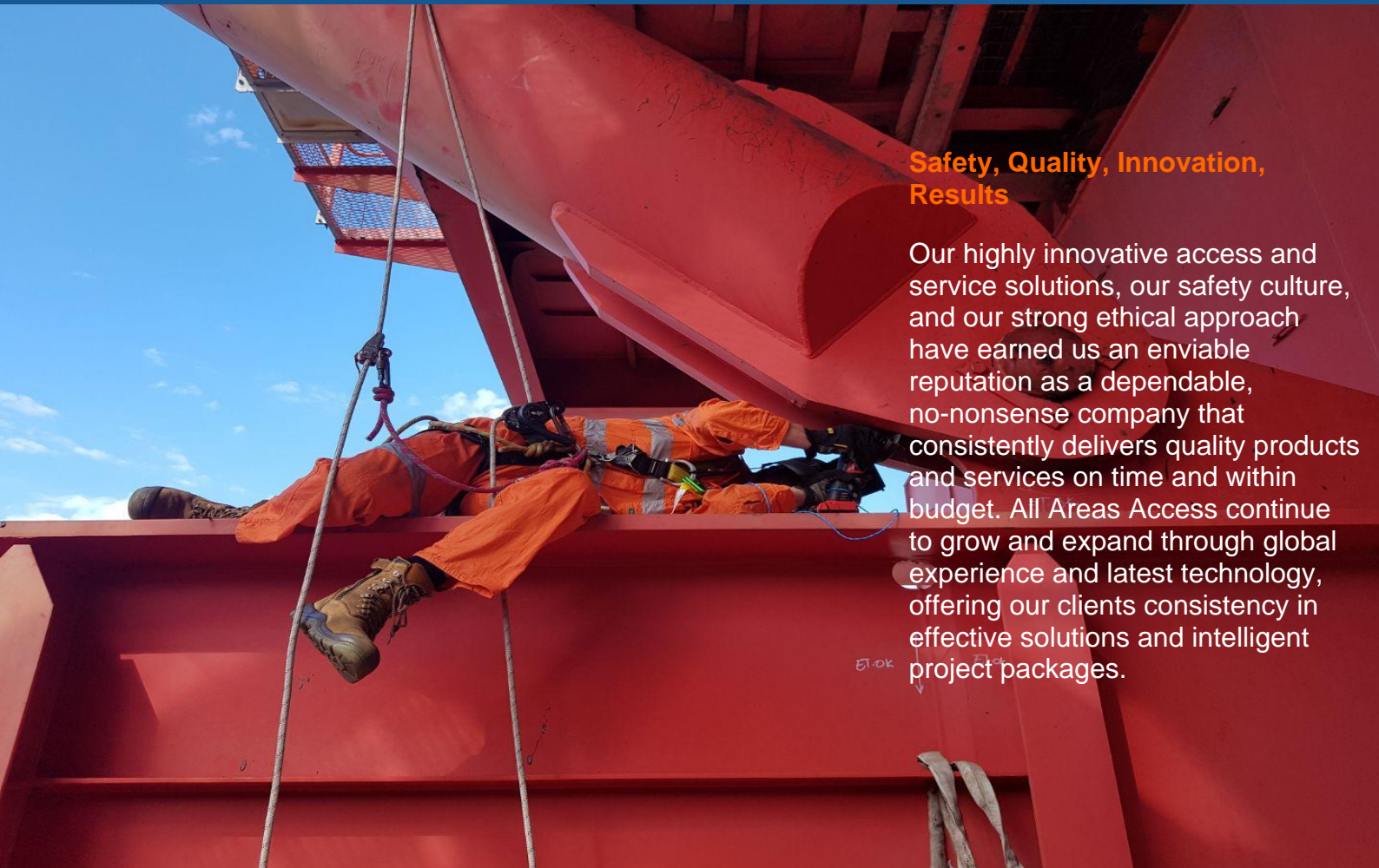
Corporate Profile	2
Company Overview	3
Vision, Mission, Values	4
Management Team	5
Corporate Information	6
Capability	7
Rope Access	8
Construction Services	9
Maintenance & Repair	10
Inspection & Testing	11
IRATA Rope Access Training	12
Safety, Sustainability & Systems	14
The All Areas Access Approach	15
Sustainability	15
Quality	15
Environment	16
Community	16
Projects	17
BHP Billiton Worsley FAC 50 Roof Replacement	18
Broadmeadow Mine Main Gate Portals	20
Atwood Eagle King Post Load Test	22
Naval Vessel Maintenance	22
Esplanade Station Calcification Rectification	24
Deepwater Millennium Derrick & Guide Frame	24
North Sea Atlantic NDT & Maintenance	26
Barrow Island & PNG MLA Maintenance	26



Corporate Profile

Safety, Quality, Innovation, Results

Our highly innovative access and service solutions, our safety culture, and our strong ethical approach have earned us an enviable reputation as a dependable, no-nonsense company that consistently delivers quality products and services on time and within budget. All Areas Access continue to grow and expand through global experience and latest technology, offering our clients consistency in effective solutions and intelligent project packages.





Company Overview

All Areas Access is based in Perth, WA, delivering specialist access and service solutions to the commercial, resources and energy industries.

All Areas Access provides a variety of innovative maintenance and service solutions to facilities both onshore and offshore, saving our clients time and money by minimising downtime and maximising the efficiency of the asset, facility and infrastructure.

Our multi-skilled trade professionals are trained in every aspect of working at height. This versatility in capabilities gives All Areas Access the ability to adapt and deliver, and increase the return on our client's assets without compromising safety or quality.

Industrial rope access compliments our wide range of access methods. We use climbing and abseiling techniques adapted to industrial work environments to perform complex tasks in impossible locations, with safety, quality, speed and efficiency. All Areas Access is an IRATA member company.

The key to All Areas Access' success is the set of core values that underpins an organisation committed to understanding client and project needs, delivering flexibility in meeting these needs, consistently meeting agreed outcomes for our clients and business partners, and maintaining a focus on excellence in all areas of operation.

Vision

All Areas Access will at all times be –

- **respected** for our integrity;
- **valued** for our quality;
- **admired** for our enthusiasm;
- **consistent** in our ability to succeed; and
- **recognised** for our commitment to excellence.

Vision, Mission, Values

Mission

All Areas Access will deliver specialist access, scaffolding, rigging, maintenance, inspection and height safety services across Australia to meet or exceed our clients' expectations. In achieving this, we will maintain our commitment to quality, be flexible in our ability to meet client requirements, be honest in our dealings with others and create acknowledged benefit for our clients and our business partners.

We are committed to maintaining a safe workplace and to maintaining the sustainability of the natural environment in which we operate. We are committed to our team and to the skills, knowledge and shared values that underpin our success.

We will maintain our focus on ensuring All Areas Access meets its profits, quality and growth goals.

Values

These values guide and direct all aspects of All Areas Access' operations, business development and administrative activities.

- **Integrity** - we will always be fair and honest in our working relationships with our clients, our business partners and each other.
- **Reliability** - our business is built on our ability to deliver on time, every time, this is what our clients expect of us, and what we expect of ourselves.
- **Reputation** - our reputation is paramount to our business, we will always strive to enhance our reputation and to avoid any actions or activities that could damage this valuable asset.
- **Flexibility** - the wants and needs of our clients are our first consideration, we will at all times try to maintain the flexibility needed to understand and satisfy client requirements.
- **Mutuality** - our success as a company can only be sustained if that success is mutual to our clients, our subcontractors, our suppliers and our team.
- **Quality** - we seek to achieve excellence in all areas of our business, in our internal operations and through the consistent quality of the products and services we deliver.
- **Safety & Environment** - we are totally committed to our safety and the safety of those who work with us, as we are to the sustainability of the natural environment in which we operate.
- **Team** - our success will always be dependent on our skills, knowledge, experience and enthusiasm, how well we work for each other and our collective commitment to excellence.



John Lee
Managing Director

Managing Director and founder, John is responsible for setting the strategic direction for All Areas Access and for providing leadership to the operational management of the company. John has been actively engaged in business operations both onshore and offshore for 25 years, implementing the core values of "Safety, Quality, Innovation, Results." These values, among others, continue to guide and direct all of John's business operations, development and administrative activities. He built All Areas Access around his personal commitment to excellence, his honesty and integrity in dealing with business partners and his ability to build and maintain a team of highly skilled individuals who share his beliefs and his passion. This passion drives the All Areas Access commitment to being recognised as one of the leading companies in Australia for the delivery of reliable and cost-effective access and service solutions. John is the current Chairman of IRATA Australasia.

Management Team

David McRory
IRATA Rope Access & Training Manager, Project Manager

David joined the All Areas Access team in May 2016 to provide assistance with the company's rope access operations and training activities. David provides significant input into developing planning processes and is responsible for implementing safety systems for our operations personnel. David has had extensive international exposure to the oil and gas industry and has earned an enviable reputation as an IRATA Instructor. David brings to All Areas Access over 16 years experience in the management of rope access, maintenance, construction and offshore projects across the UK and Australia.



Jara Chodil
Estimator, Project Engineer

Jara was offered employment at All Areas Access after AAA's Director learned about his reputation as having an unparalleled attitude to safety, outstanding work ethics and an enviable social demeanour. Jara has since surpassed his reputation, and has proven himself reliable and professional in his approach to training and operations. His attention to detail is infectious, as is his smile and his positivity. Jara has international experience in project management, business development, estimating, facade works, rope access and construction across all industries. His claim to rope access fame is the Eiffel Tower!



Adriana Vieira
Training Coordinator, Administration

Adriana is responsible for the successful delivery of administration management across the various operational divisions of All Areas Access. She has attained IRATA Level 1 qualification, is an advanced rigger, and has worked as a trade assistant in the construction, mining, marine and oil & gas industries for over 2 years. Adriana is a highly regarded member of our team having an exceptional talent for making the impossible possible, even when under pressure. Adriana understands the importance of maintaining a team environment to achieve lasting goals.





Corporate Information

All Areas Access Group Company Information

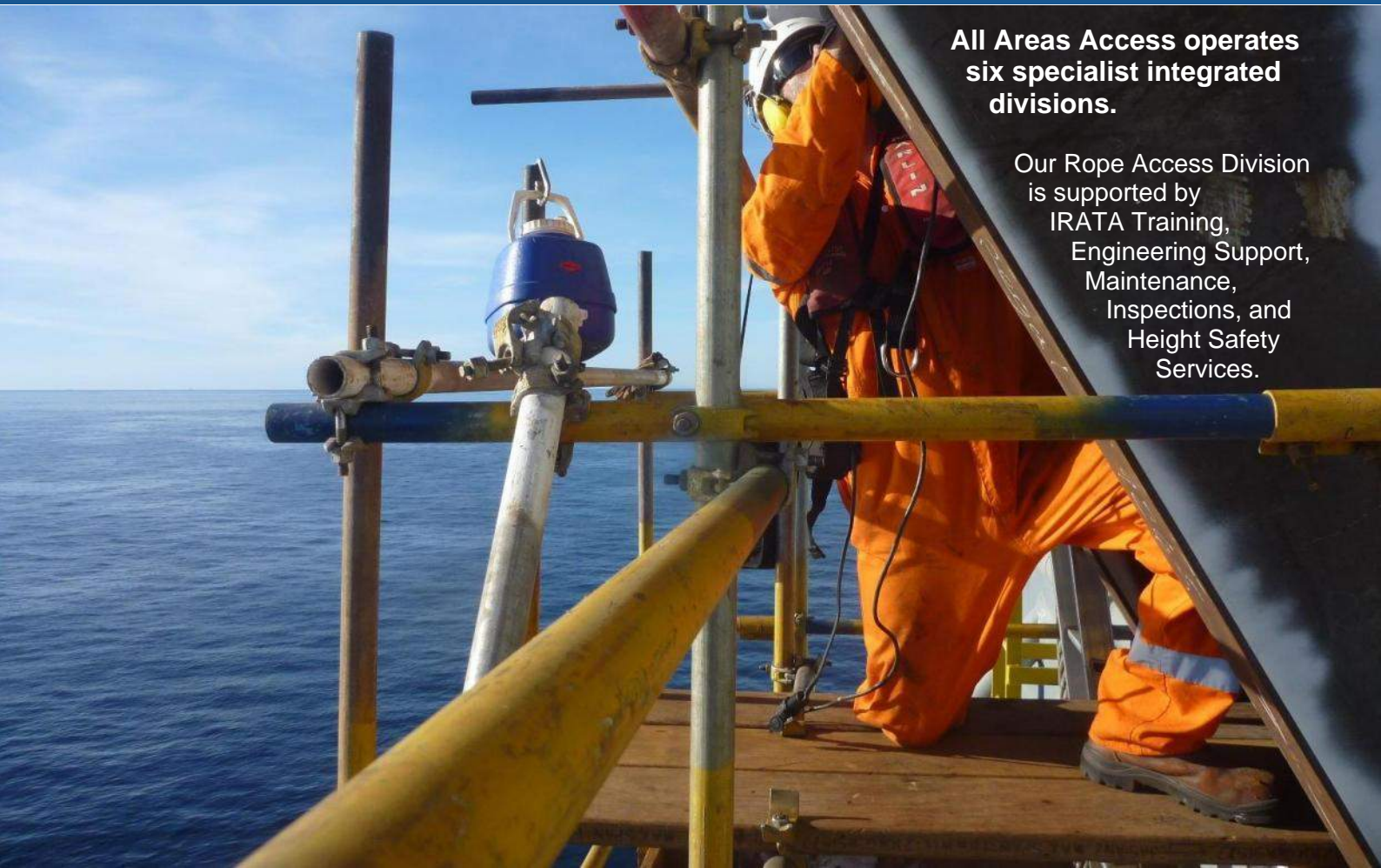
Full legal name of the Company	All Areas Access Group Pty Ltd
Trading or business name/s	All Areas Access
Legal status of the business (e.g.: registered company, sole trader, partnership)	Registered Company
State of incorporation	Western Australia, Australia
Australian Company Number (ACN) or other entity identifier(s)	ACN - 151 909 741
Australian Business Number (ABN)	ABN - 30 151 909 741
GST Status	100% registered
HEAD OFFICE	Level 28, 140 St Georges Terrace, Perth WA, 6000
IRATA OPERATIONS & LOGISTICS	80 Howe Street, Osborne Park WA, 6017
IRATA TRAINING	Unit 3, 75 Howe Street, Osborne Park WA, 6017
Telephone (General)	1300 14 14 11 (Local callers) +61 8 9278 2457 (International callers)
Fax (General)	+61 8 9245 3468
E-mail	info@allareasaccess.com.au
Web	www.allareasaccess.com.au



Capability

**All Areas Access operates
six specialist integrated
divisions.**

Our Rope Access Division
is supported by
IRATA Training,
Engineering Support,
Maintenance,
Inspections, and
Height Safety
Services.





At All Areas Access, we help our clients achieve their organisational objectives through offering the access solution AND the service requirements. This is delivered in the form of labour hire support services, or full Project Management services.

irata
International

Image courtesy of All Areas Access © 2016

Rope Access Specialist Access & Service Solutions



Our trained and qualified personnel are multi-skilled, qualified professionals with various trades. They are chosen for their qualifications, experience, outstanding reputation and impeccable social and business manners. Our clients requiring rope access and/or trade labour hire are provided with a versatile team that can keep busy with other work during unscheduled job delays.

All Areas Access is an IRATA member company. Using rope access techniques, All Areas Access deliver a wide range of high risk work activities with safety, speed and efficiency.

All Areas Access provides the access solution AND the service requirements, with little or no disruption to others and zero impact on the environment. Using rope access techniques All Areas Access offers a safe, quick, cost-effective and unobtrusive access solution to any task.

"IRATA is now recognised as the world's leading authority on industrial rope access. It has over 350 member companies around the world and has trained in excess of 110,000 rope access technicians worldwide."


IRATA Rope Access Training

ALL AREAS ACCESS IRATA ROPE ACCESS TRAINING courses, Osborne Park, WA. Home to Australia's largest dedicated world class rope access training facility, which is located directly across the road from our IRATA Operations facility.

The IRATA Rope Access Training course provides the required skills and certification to be able to start work in the rope access industry, and is recognised world-wide.

Core Capabilities

- Identifying and delivering benefits to our clients through all stages of the project life cycle.
- Providing the full suite of services including specialist access, rigging, scaffolding, engineering, inspection, maintenance and height safety.
- Utilising the strengths and expertise of our multi-disciplined team to deliver results.
- Providing people and services that complement our client's existing internal systems and people.
- Being flexible and adaptable to meet our client's needs, including assisting with change management to identify risk and corrective actions.
- ***Safely and quickly accessing absolutely anything, then delivering a specialist service.***



All Areas Access provides high levels of project control and productivity through a multi-disciplinary and experienced team of construction specialists. We support our projects with quality trades and services and an extensive range of plant and equipment.

Construction Services Scaffolding, Rigging, Welding

Core Capabilities

- Structural steelwork
- Welding & boilermaking
- Platework, including chutes, silos, tanks
- Wear linings
- Mechanical fitting
- Rigging
- Scaffolding

Our Approach

When initiating any construction project we consider it critical to ensure our planning and documentation clearly highlights the required project outcomes and deliverables. With this knowledge, we can:

- Prioritise safety in our work processes through Safety Management Plans, Risk Assessments, Project Risk Registers, Safe Work Method Statements and Job Safety and Environment Analyses.
- Establish systems of work with our client that address the safety, quality, scope and schedule requirements and that are benchmarked against our minimum standards.
- Implement recruitment processes to build a team with the experience, skills and qualifications needed to complete the project, along with the attitude, enthusiasm and commitment to embrace the All Areas Access values and express these values across all areas of the project.
- Develop innovative options and solutions to the challenges and issues that inevitably arise in any project to enable our clients to make informed decisions on the best way forward.
- Maintain strong and effective partnerships with all stakeholders in the project through the integrity of our dealings with clients, business partners and employees, and by establishing a working environment based on fairness, honesty and mutual respect.
- At all times work to meet or exceed industry standards.
- Reinforce our company value of reliability by delivering on our promise.



Maintenance & Repair Packages

All Areas Access delivers a variety of innovative maintenance solutions to facilities both onshore and offshore, saving our clients time and money by minimising downtime and maximising the efficiency of the asset, facility and infrastructure.

Our multi-skilled trade professionals are trained in every aspect of working at height. This versatility in capabilities enables All Areas Access to adapt and deliver, maximising return on our client's assets without compromising safety or quality.

Commercial, Construction, Energy

Maintenance packages are available for any type of asset and facility. Following a detailed consultation, All Areas Access will develop a customised repair or maintenance program meeting all relevant Standards and Regulations. Access requirements are assessed and a project-specific WHSE Plan is drafted.

Core Capabilities

- Rope access
- Asset integrity
- Non Destructive Testing (NDT)
- Maintenance
- Trades
- Engineering
- Painting and coating
- Dropped objects survey
- Lifting inspection services
- Training
- Consultancy



Inspection & Testing

All Areas Access combine rope access with engineering and NDT techniques to facilitate in-service inspection; condition monitoring; measurement of components and spacings; measurement of physical properties such as hardness and internal stress and coatings.

Our Methods

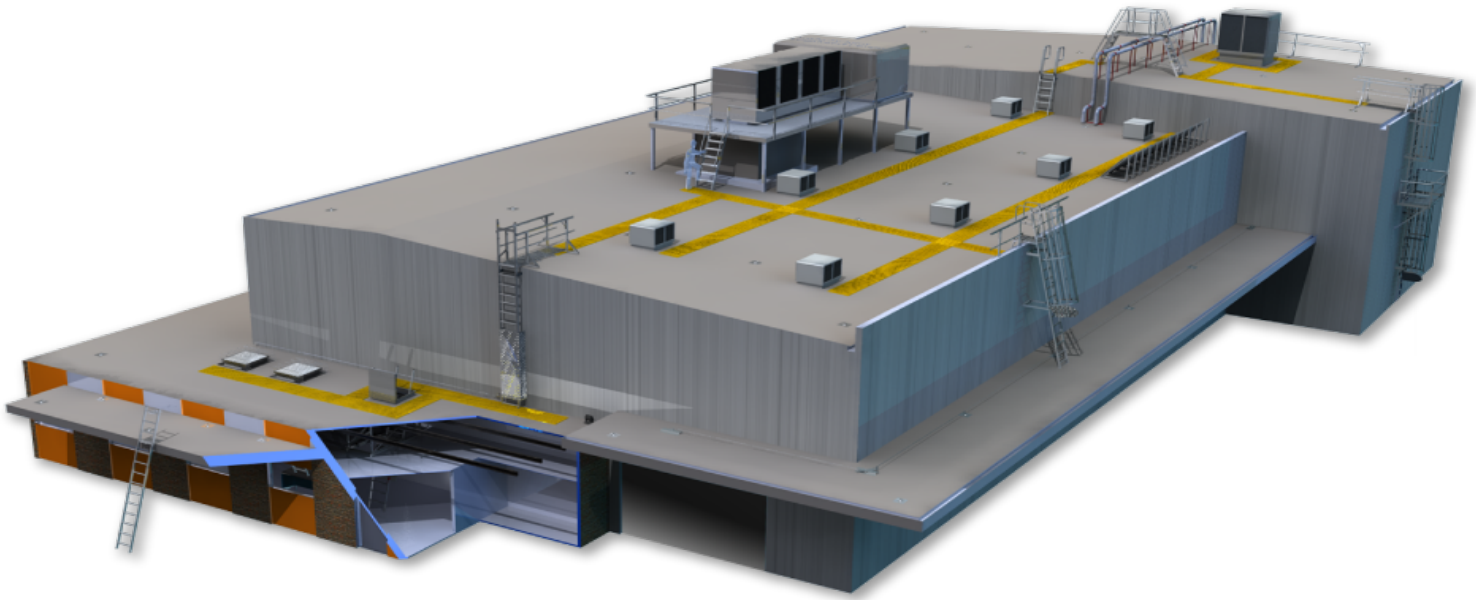
Non-Destructive Testing ranges from simple techniques such as visual examination of surfaces, through to the well-established methods of radiography, ultrasonic testing, phased array, eddy current inspection, and magnetic particle crack detection. NDT methods can be adapted to production processes as well as to the inspection of localised problem areas.

Coating inspections are performed by NACE coating inspectors with relevant experience and qualifications, or technicians working under their guidance.

All Areas Access provides the access solution and inspection service, saving our clients time and money. Inspection reports are usually generated within 24 hours or less, and all work is carried out by experienced NDT Technicians and Inspection Engineers working to NACE, AINDT, BINDT, CSWIP; and PCN certification.

Core Capabilities

- Visual Inspection
- Hardness Testing
- Eddy Current Inspection (ECI)
- Ultrasonic Thickness and Flaw Testing (UT)
- Magnetic Particle Inspection (MPI)
- Dye Penetrant Inspection (DPI)
- Time of Flight Diffraction (TOFD)
- Radiography (RT)
- Phased Array Ultrasonics Inspection (PA)
- NACE Coating Inspection



Height Safety

Core Capabilities

- Static line
- Safety anchor
- Traveling rail systems
- Guardrail
- Walkway
- Access platform
- Rope access systems
- Fall restraint and fall arrest systems
- Access ladders and stairs
- Safety netting
- Inertia reel
- Safety harness
- Temporary safety line
- Consultancy
- Engineer report
- Site audit & risk assessment
- Rescue plan

Audit, design and installation

All Areas Access have a dedicated Height Safety & Access Solutions division made up of consultants, engineers and architects. Our qualified consultants perform site-specific facility audits and risk assessments based on existing (or required) height safety systems. Our process involves the provision of reports, list of recommendations, relevant information, specifications and drawings with Height Safety System mapping and all things necessary for leading up to the installation process.

All Areas Access comply with OSH Act, Codes of Practice, Regulations and Australian Standards. We work closely with our suppliers and manufacturers of height safety & fall protection systems to ensure that the best possible designs are used to create the best possible solutions.

Testing and certification

All Height Safety Systems require periodic inspection, maintenance and re-certification. All Areas Access apply signs and labels with clear instructions and all mandatory system information. All Height Safety system components are tagged at your facility. All details are logged in our unique Height Safety Management System which automatically sends you a reminder before the next inspection is due.



IRATA Rope Access Training

***ALL AREAS ACCESS IRATA ROPE ACCESS TRAINING courses, Osborne Park, WA.
Australia's largest dedicated world class rope access training facility.***

The IRATA Rope Access Training course provides the required skills and certification to be able to start work in the rope access industry, and is recognised world-wide.

All Areas Access offer the following three levels of IRATA rope access training courses-

IRATA Level 1

Entry Level. This is a rope access technician who is able to perform a specified range of rope access tasks under the supervision of a Level 3 rope access safety supervisor. No previous experience is required.

IRATA Level 2

This is an experienced rope access Technician who is able to perform more complex tasks under the supervision of a Level 3 rope access safety supervisor, capable of more complex rigging, able to undertake rescues from a variety of situations, and is able to assemble and implement hauling systems.

IRATA Level 3

This is an experienced rope access Technician looking to move into a supervisory role who is responsible for understanding and implementing rope access procedures, method statements and risk assessments, understands the elements and principles of IRATA, is conversant with relevant work techniques and legislation, has an extensive knowledge of advanced rope access rigging and rescue techniques, and holds an appropriate and current first-aid certificate.





Safety, Sustainability & Systems



The background of the page is a photograph of a tall, slender stadium light tower. A worker in a safety harness is visible on a ladder attached to the tower. The tower is topped with a large array of floodlights. The sky is a clear, bright blue.

The All Areas Access Approach

All Areas Access approach to sustainability in business is based on Integrated Management Systems committed to delivering continual improvement across our health and safety, environmental, quality and industrial relations performance.

This approach focuses on four key areas of responsibility:

- > Protecting our people and those who share the workplace with us.
- > Delivering a consistent and quality product.
- > Nurturing the community in which we work and live.
- > Maintaining the natural environment in which we operate.

As we expand our capabilities to deliver more complex and diversified projects and complete project delivery solutions for our clients, our existing policies and systems are being continually reviewed and revised to support alignment and growth, and to add value for our clients. All policies and systems are actively communicated to personnel to ensure we achieve compliance and continuous improvement.

Sustainability

Sustainability is integral to the governance of our company and at all times we strive to deliver sustainable outcomes for our clients, our people, our suppliers and the community in which we work. We constantly identify opportunities to improve our safety and environmental practices and seek to balance the interests of all stakeholders against the demands of business to achieve sustainable health, safety and environmental outcomes.

We recognise our clients' expectations that we deliver exceptional safety and environmental practices at all times. We accept our responsibility to understand our clients' safety and environmental policies clearly and ensure we consistently meet or exceed these requirements.

We consider our integrated Work Health Safety and Environmental (WHSE) system, aligned with

Australian Standards AS 4801 (Occupational Health and Safety Management Systems) and ISO 14001 (Environmental Management Systems) to represent best practice in safety and environmental management.

Safety

At All Areas Access, safety and security of our people and those we work with is our number one priority. We aim to achieve and maintain best practice in our workplace safety at all times. We have worked consistently to develop a strong work safety culture within All Areas Access, based on integrating safety as a core value of our business. This approach is based on all staff members understanding they are responsible both individually and within their teams for maintaining a safe workplace, for themselves and those who work beside them.

Our approach to workplace safety is proactive, based on a thorough approach to identifying and documenting risk in the planning phase of projects, in the day-to-day operation on site and in the workshop environment. This is managed through comprehensive safety program aimed at:

- > Providing safety leadership while encouraging input from staff and stakeholders.
- > Communicating operational risks and constantly updating risk information.
- > Accurate reporting and analysis of safety performance including feedback from clients and other stakeholders.
- > Achieving best practice in workplace safety across all areas of operation.

Quality

All Areas Access received accreditation from IRATA for Operator Membership in 2013. To ensure compliance and continuous improvement in our quality systems, we engage a regular auditing program. Our auditors have completed the Internal Auditor Training Program by IRATA International to provide independent and objective assessment of compliance.



Environment

All Areas Access recognises its responsibility to maintain sustainable environmental practices across all areas of our operation. We believe our approach based on constantly pursuing opportunities to reduce our environmental footprint and minimise our carbon output is not just good for the environment, but is also good for business.

We encourage our staff to have an input in our environmental management systems and generate ideas to make our business operations more energy efficient and environmentally friendly.

At all times we take account of the environmental policies of our clients and work within these policies to support and sustain the environmental objectives of each project we undertake.

Community

All Areas Access recognises the importance of community and its responsibility to engage with the communities across the areas in which we operate. As a company, we are particularly focused on supporting young people of our community, our future, and providing sponsorships and other support to youth based activities and organisations.

Wherever possible we seek to engage with Australia's Indigenous community, to provide opportunities for employment, training and development. We recognise that many of our business partners work closely with the Traditional Owners of the country on which they operate to provide business opportunities for Indigenous suppliers and training and development opportunities for Indigenous staff. All Areas Access is fully committed to working with our partners to support and assist their Indigenous engagement programs.



Projects





Client:	BHP Billiton / Monadelphous
Location:	BHP Billiton Worsley, Collie, WA

Contract type:	
Services:	Safety planning, rope access, rigging, scaffolding, safety net installation, inspection and certification
Project Description:	<ul style="list-style-type: none"> • Travel to BHP Billiton Worsley for Working at Height & Site Assessment; • Access assessment of Pan Filer roof and structure; • Equipment Load-out; • Co-ordinate equipment engineering, fabrication and transportation; • Inspecting, tagging and coding of all rigging equipment and LWP Safety Net Systems including: <ul style="list-style-type: none"> ○ Girder clamps, shackles etc. ○ LWP Safety Net and grid ratchet Systems • Working at Height-Installation of LWP Safety Net Systems and scaffolding for access; • Install LWP Safety Net and grid systems as per Installation Guidelines; • W@H for post-install check of LWP Safety Net System: <ul style="list-style-type: none"> ○ Confirm rigging / net securing ○ Confirm scaffolding / tag ○ Confirm all nets secure and in place ○ Quality and regulatory checks at height





Client:	BHP Billiton Mitsubishi Alliance
Location:	Broadmeadow Mine, Queensland

Contract type:	Rates Reimbursable
Services:	Safety planning, engineering, rope access, rigging, scaffolding, safety net and frame-work installation and certification, design, fabrication
	<p>Project Description:</p> <ul style="list-style-type: none"> • Travel to Broadmeadow n <p>Assessment, job planning and site inductions;</p> <ul style="list-style-type: none"> • Access assessment of portals and rock faces; • Equipment Load-out; • Co-ordinate equipment engineering, fabrication and transportation; • Inspecting, tagging and coding of all rigging equipment, debris mesh Safety Net Systems and structural support frame-work , including: <ul style="list-style-type: none"> ○ Girder clamps, shackles etc. ○ Safety Net and grid ratchet Systems and components • Working at Height-Installation of Safety Net Systems and scaffolding for access; • Install debris mesh, Safety Net and grid systems as per Installation Guidelines; • W@H for post-install check of Safety Net System: <ul style="list-style-type: none"> ○ Confirm rigging / net securing ○ Confirm scaffolding / tag ○ Confirm all frame-work and nets secure and in place ○ Quality and regulatory checks at height





Client:	ICON Engineering
Location:	Atwood Eagle Semi-Submersible Drill Rig, North-West Shelf

Contract type:	Rates Reimbursable
Services:	Safety planning, rope access, rigging, inspection and testing, NDT
Project Description:	King Post load test on the Atwood Falcon Semi-Submersible Drill Rig. The load test was conducted with water bags requiring engineer, rope access/NDT technicians and load test technician.

Client:	NSM Australia
Location:	Garden Island

Contract type:	Rates Reimbursable
Services:	Safety planning, rope access, rigging, Confined Space Entry
Project Description:	Confined Space Entry pipe spool change-outs on 8 x Naval vessels



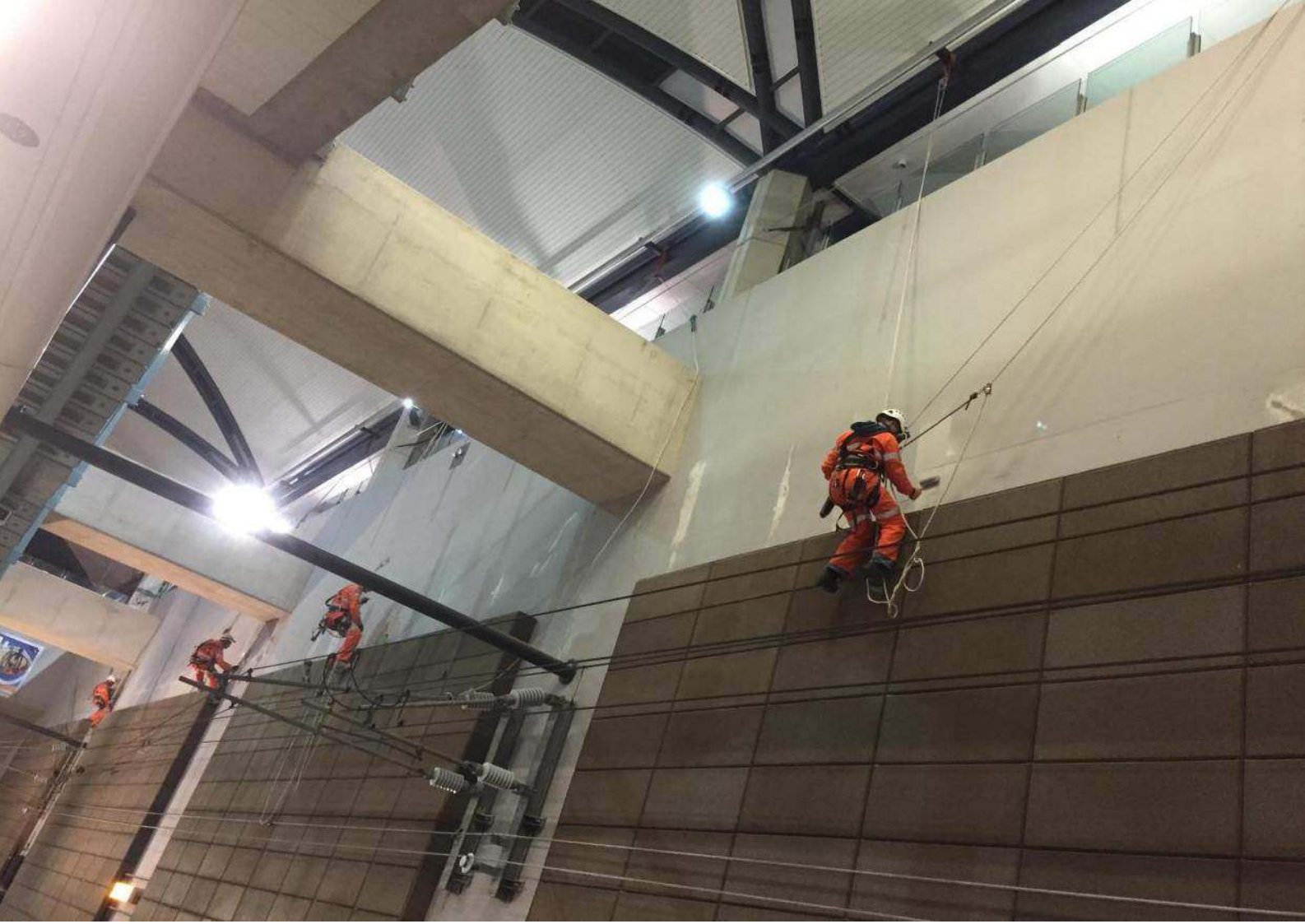


Client:	Leighton Contractors
Location:	The Esplanade Station, WA
Timeline:	2015 - 2016

Contract type:	Lump Sum
Services:	Rope access, calcification rectification works, electrical works, cabling
Project Description:	Cable change-out, beam detector change-out, large scale calcification rectification works involving grinding, resin application and painting

Client:	ICON Engineering
Location:	Deepwater Millennium Drill Ship, North-West Shelf
Timeline:	2015

Contract type:	Rates Reimbursable
Services:	Safety planning, rope access, rigging, scaffolding, inspection, NDT
Project Description:	Christmas tree guide frame installation and dismantle, derrick modification, dropped objects survey, scaffolding, welding, NDT





Client:	Technip
Location:	North Sea Atlantic, North West shelf, WA
Timeline:	2016 - 2017

Contract type:	Rates Reimbursable
Services:	Safety planning, rope access, rigging, scaffolding, UT, MPI, Visual
Project Description:	Weld inspection/testing of lifting equipment, specialist access

Client:	CAMCO Engineering
Location:	Barrow Island & PNG
Timeline:	2016 - 2017

Contract type:	Rates Reimbursable
Services:	Safety planning, rope access, rigging, maintenance
Project Description:	Re-torque bolted connections and general maintenance on Marine Loading Arms





All Areas Access Group Pty Ltd.
ABN 30 151 909 741

Level 28, 140 St Georges Tce
Perth WA, 6000, Australia

P 1300 14 14 11
P 618 9278 2457 (International)
E info@allareasaccess.com.au

www.allareasaccess.com.au