



DoubleCOOL
ACRYLIC COOLING SOLUTIONS

THE FUTURE
IS ACRYLIC



THE
FUTURE
IS ACRYLIC

EASY MOUNTING





HIGH END
PRODUCT



OUTSTANDING
QUALITY





TRANSPARENCY

DESIGN PRODUCT



TOP QUALITY



FRAMELESS



LIGHT & EASY OPENING



WIDE
OPENING

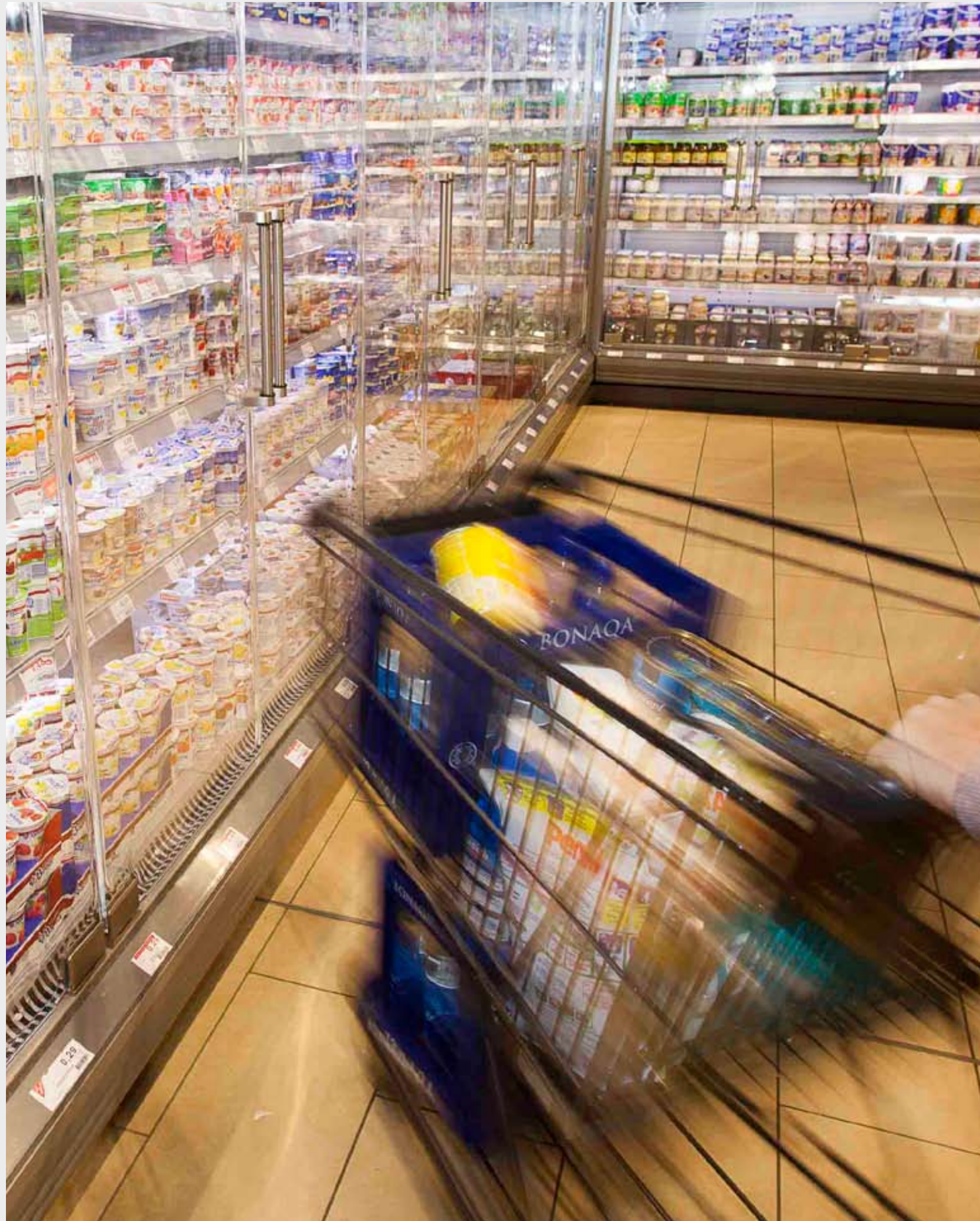


SAFETY



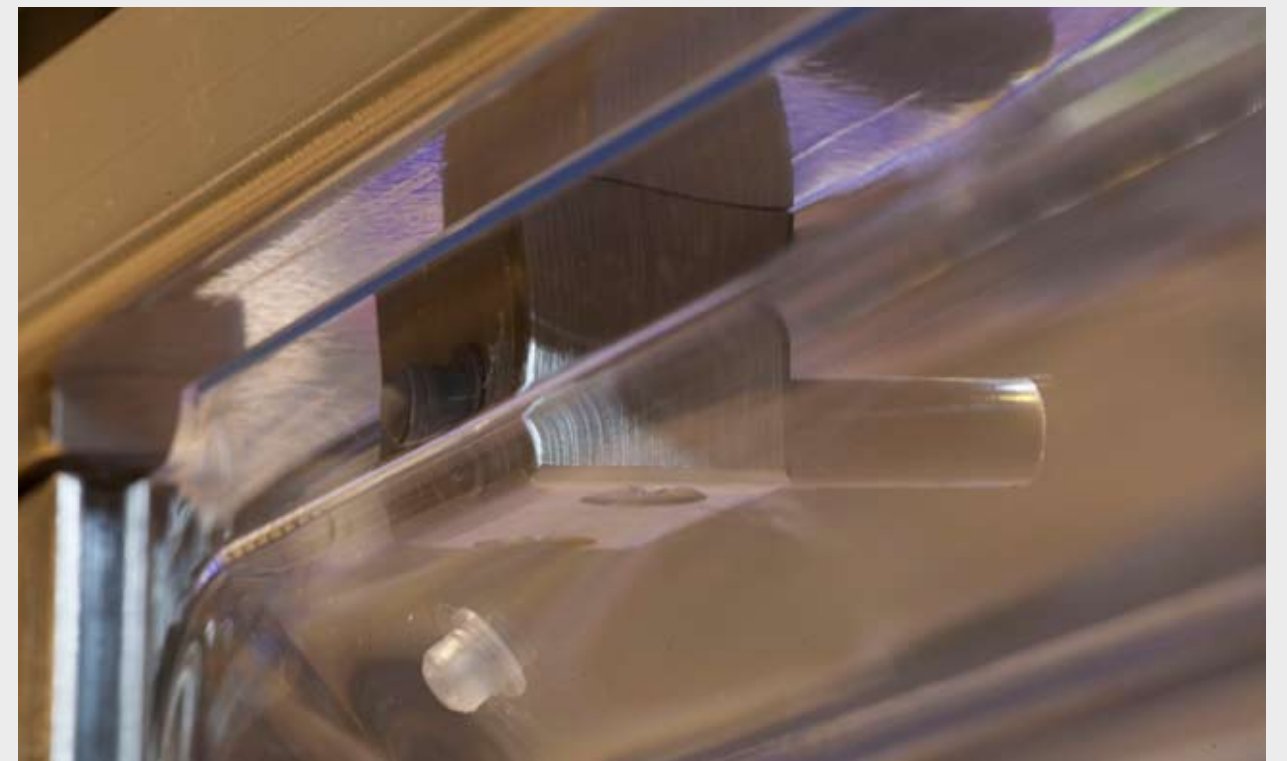
CHILD-SAFE GAP

IMPACT
RESISTANT



ENERGY SAVING

INNOVATIVE DETAILS



HIGH CLASS
ACRYLIC





AVAILABLE SIZES OF COOLSTAR DOORS - HANDLE AND NOTCH OPENING

HANDLE OPENING

Width in mm	Height in mm
465	1395
465	1518
474	1673
475	1575
475	1635
490	1545
530	1627
537	1575
565	1545
591	1528
600	1380
611	1863
615	1140
615	1175
615	1224
615	1313
615	1370

HANDLE OPENING

Width in mm	Height in mm
615	1426
615	1450
615	1500
615	1545
615	1575
615	1616
615	1641
615	1665
615	1700
615	1735
615	1756
615	1800
615	1841
713	1860
780	1590
828	1860

HANDLE OPENING MILK TROLLEY

Width in mm	Height in mm
457	1302
460	1900
490	1302
490	1900
490	2003

NOTCH OPENING

Width in mm	Height in mm
615	1280
615	1615
615	1638
615	1715

The dimensions refers to the door size, not the opening of the cabinet.

All dimensions above can be produced in 3+3 mm thickness.

Valid from 12/2017.

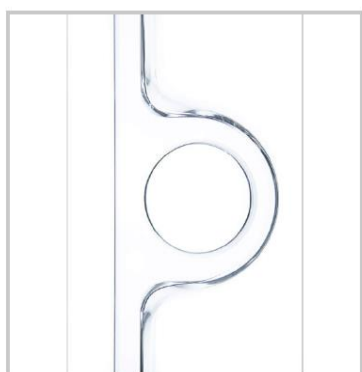
DoubleCOOL B.V.

Vlaardingweg 98 | 3044 CK Rotterdam | The Netherlands | +31 (0)10 – 44 61 112

www.doublecool.com

AVAILABLE SIZES OF COOLSTAR DOORS - HOLE OPENING

HOLE OPENING		HOLE OPENING	
Width in mm	Height in mm	Width in mm	Height in mm
434	1115	615	1426
470	1302	615	1500
490	1605	615	1535
490	1735	615	1542
492	1788	615	1550
571	1480	615	1570
575	1480	615	1605
577	1480	615	1641
609	1115	615	1705
610	1335	615	1759
612	1863	615	1780
615	1335	615	1805
615	1370	620	1759
615	1426	689	1242



HOLE OPENING



HANDLE OPENING



NOTCH OPENING

*The dimensions refers to the door size, not the opening of the cabinet.
All dimensions above can be produced in 3+3 mm thickness.
Valid from 09/2017.*

What you should know about DoubleCOOL*:

- **DoubleCOOL** is the inventor of the unique high quality, lightweight and double pane acrylic doors.
- **DoubleCOOL** is specialist in the design, production and world wide distribution of energy saving door systems for supermarkets.
- **DoubleCOOL** offers tailor-made solutions for both the retrofit market and new OEM refrigerated cabinets.
- **DoubleCOOL** doors are made from high quality cast acrylic with excellent UV stability.
- **DoubleCOOL** doors are provided with anti scratch coating for ultimate protection.

* member of the Polyplastic Group Rotterdam Holland



**Your partner for
Acrylic cabinet doors**

DoubleCOOL
ACRYLIC COOLING SOLUTIONS
www.doublecool.com

- 100% Transparency
- Customer friendly
- Safety
- Lightweight
- Condensation free

**Energy
Saving up to
50%**

CoolStar Swing

Frameless, 100% transparency and self-closing doors

- This double-pane lightweight door is unique in the world.
- Excellent insulation, condense free characteristics and energy saving up to 50%.
- Extreme smooth opening for excellent shopping pleasure.



Self-closing hinges
Tested for over 1 million maintenance free movements. Maximum open angle 170 degrees.



Finger safety
A 15mm child safety gap between the doors.



Door stopper
Ensures even more elegant and soft closing of the CoolStar Swing.



Handles
Robust nail friendly handle with soft protection rings.

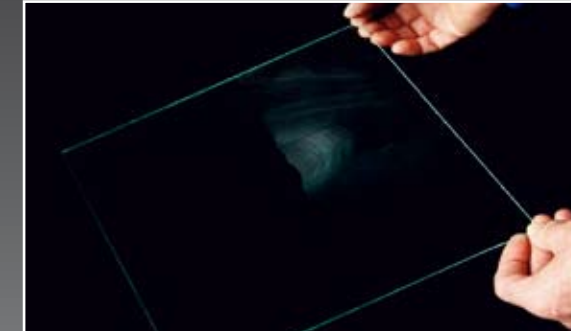
Coolstar Curve

Double-pane curved, frameless sliding doors with easy opening

- A new and innovative sliding lightweight door system for semi-vertical cabinets.
- CoolStar Curve is nicely cylindrical curved and follows the radius of the cabinet.
- The easy glide system offers an outstanding and customer friendly experience.



Screen print
Decorative screen print for luxury appearance.



Anti scratch coating
Anti scratch coating is the standard feature for the ultimate protection.



Ergonomic grip
The grip on the CoolStar Curve follows the radius of the cabinet.



SKF bearings and gliding wheels
Soft opening- and closing system as per the latest technology. Mounted backwards of the doors.

CoolStar Slide

Frameless double-pane lightweight doors for small aisles

- A revolutionary Plug In Cassette system for quick and easy retrofit mounting.
- CoolStar Slide offers an integrated re-stocking feature.
- The highest shopping comfort is realised through a soft- and self-closing solution.
- Easy integration in existing and new new build cabinets.
- This double-pane lightweight sliding door solution is unique in the world.



Quick mounting
Plug in cassette for quick, easy and tolerance proof installation.



Frameless
A light weight frameless system for 100% transparency.

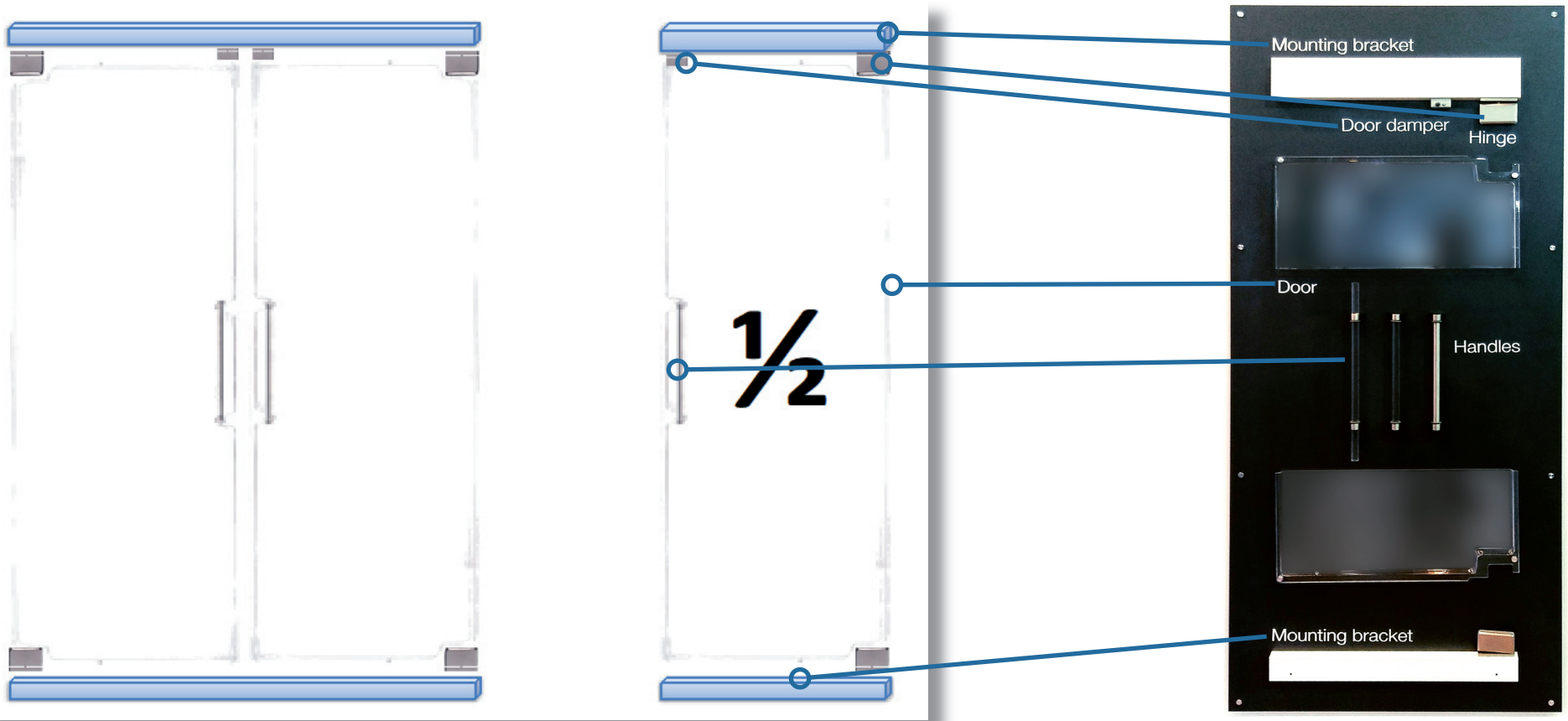


Soft close and self closing
The highest shopping comfort is realised through a soft- and self-closing system.



Easy opening
Nail friendly grip for comfortable opening, even for young children.

The DoubleCOOL door principle





COOLSTAR DOUBLE PANE ACRYLIC DOORS

ABSOLUTELY FRAMELESS AND TRANSPARENT DESIGN

FACTS AND FIGURES

- Double pane acrylic doors
- Frameless design
- More than 50% less weight compared to glass doors
- 11% more clarity than low-e glass
- scratch-resistant coating (optional)
- Safety - almost unbreakable
- Ergonomic handling
- Door opening up 175 degrees
- Self-closing hinge up to 40 degrees
- Hinge tested over 300.000 movements
- Energy saving up to 50%
- Compatible for OEM and Retrofit cabinets
- Designed according DIN EN ISO 23953
- Different handle solutions

General Warranty:

2 years warranty after delivery on the PMMA door, hinge and stopper. Damage by cracks and molest are however excluded from warranty.

Legal disclaimer:

The above information is believed to be correct but does not purport to be all inclusive and shall be used only as a guide.

This company shall not be held liable for any damage resulting from handling the above product.

Valid from 09/2017

SPECIFICATIONS AND WARRANTY

PMMA door:

Double pane transparent cast PMMA sheet

Property	Test method	Value
Warmth absorbtion	Calculation	2,0 W/m ² K
Water absorption	ISO 62	0.2%
Flammability	see safety data-sheet	Class 4
Tensile strength (5mm/min)	ISO 527	75 MPa
Flexural modulus	ISO 178	3210 MPa
Impact strength Charpy (unnotched)	ISO 179	12 KJm ²
Light transmission	ASTM D1003	ASTM D1003

Surface: optional scratch-resistant coating

Door hinge:

Close torque at fully close: 1.5 nm
 Auto close rotation: -5 – 40 degrees
 Auto open rotation: 130 – 175 degrees
 Stable position rotation: 40 -130 degrees
 Lifetime, open/close movements: 300.000

Adaptive door stopper:

Requirements: 1 stopper for each door
 Force to close: Maximum 5n
 Time to close by 5n (constant force): about 5 seconds
 Type of impact absorption: With brake unit and liquid
 Lifetime, open/close movements: 300.000
 Maintenance interval: no maintenance required

Retro fit:

For retrofit purpose DoubleCOOL is providing in every delivery tailor-made upper and lower adapter profiles according to the existing cabinet model.