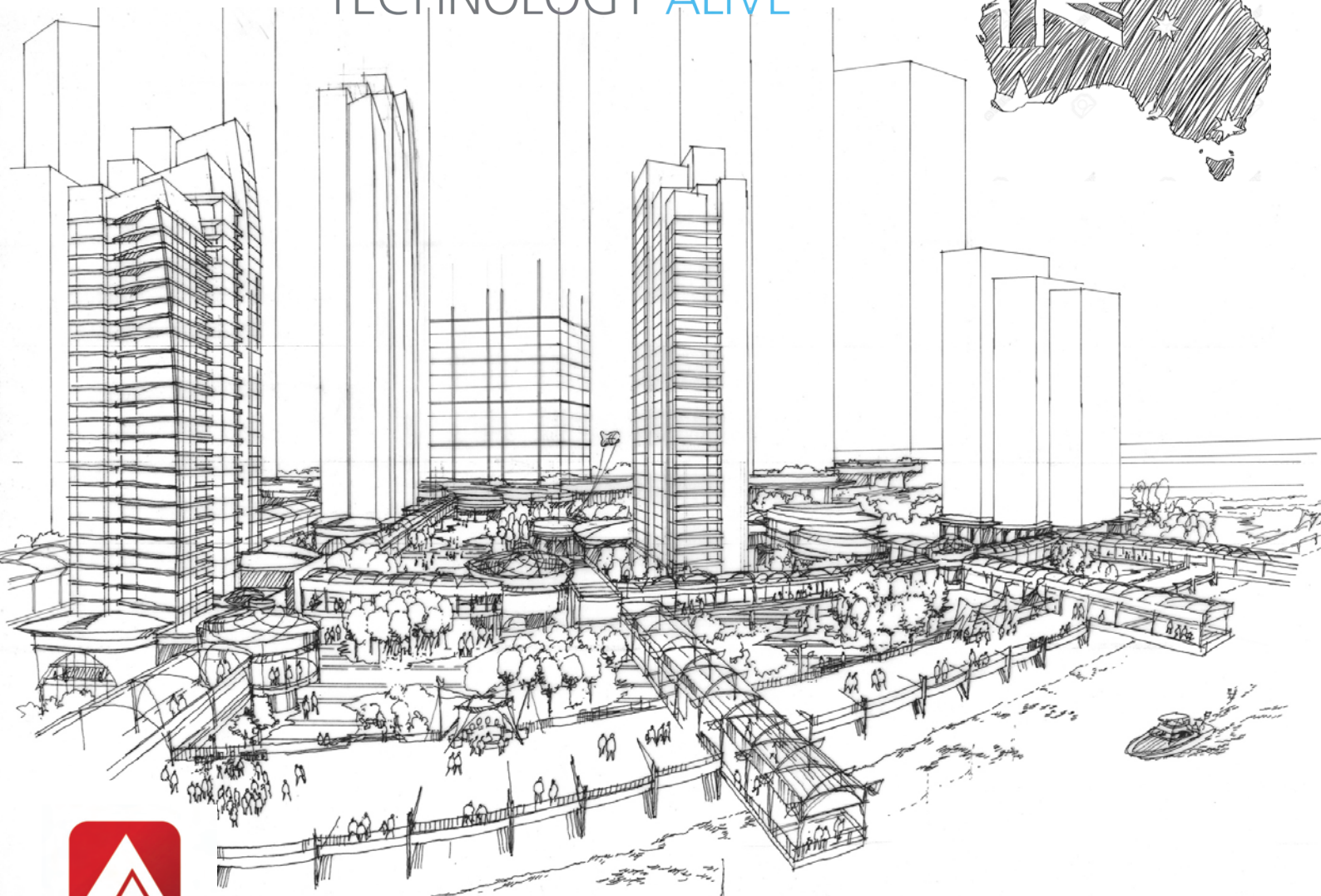


SFERE**GROUP**

TECHNOLOGY **ALIVE**



impro technologies[®]
ACCESS CONTROL

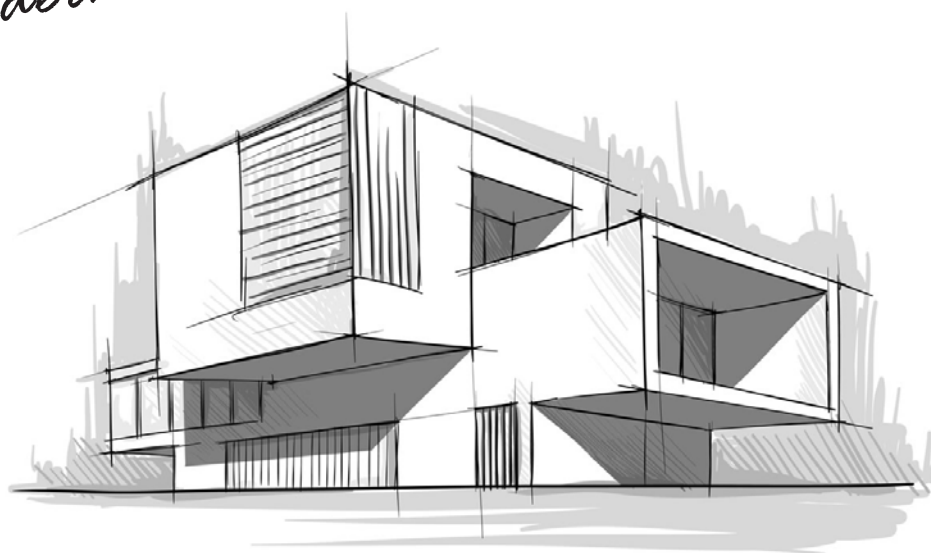
*Technical solutions for security
and confort in any size
modern residential environment*



HDL[®]
bus**pro**



bpt



SFERE**GROUP**

TECHNOLOGY **ALIVE**

SFERE GROUP is an Australian owned business, operating in across Australia / New Zealand as an Importer and Distributor for worldwide leading producers of Security and Automation systems carefully designed and created for Residential purposes. We proud ourselves of our high level of customer service and vast experience of technical support across all our product range.

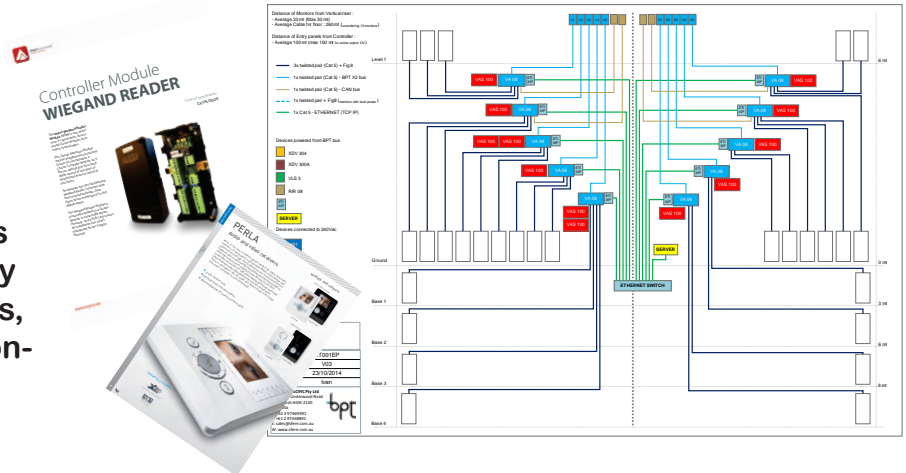
Our commitment to stock availability is managed across two warehouse facilities based in Sydney. We have the capabilities to dispatch orders, (same day locally) and be received within 24hours to most capital cities



The commitment of overseas producers and the customer service oriented management allow us to guarantee availability of missing parts, or big quantity for specific projects within acceptable timing (2/3 weeks).

We provide full technical back up on all products we promote and distribute.

Our technical documentation is clear and easy to follow for any professional installer in fit offs, final commissioning or when conducting routine maintenance.



Were here to support your existing installer
If needed, we can suggest a skilled one if you don't have your preferred Installer.

Software programming and most common trouble-shooting actions are easily supervised by our technical staff, utilising a team viewer session.

If more specific support is requested we can organize (on a case by case basis) tailor made on site support

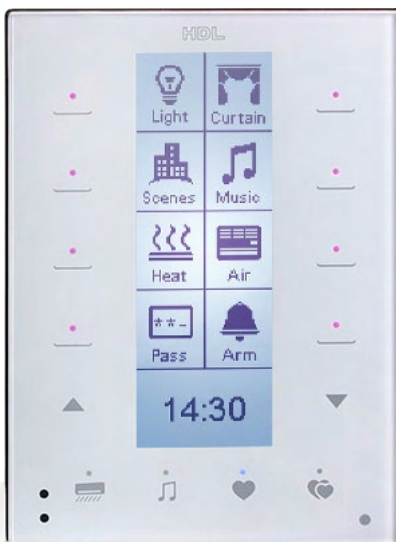
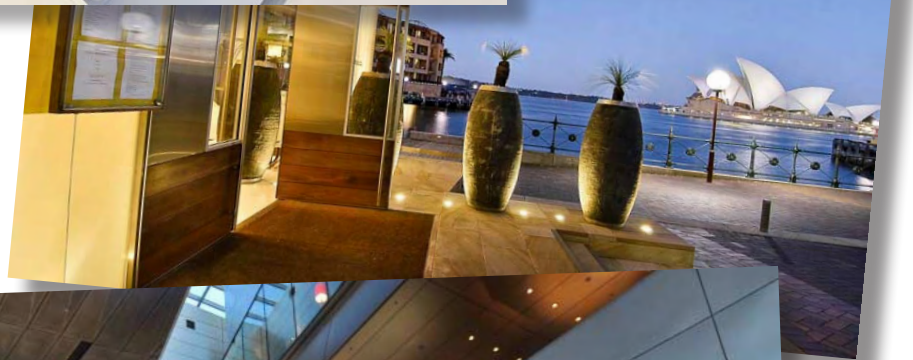




HOME AUTOMATION

- Residential
- Hospitality
- Commercial
- Marine

HDL®
buspro



Established in 1985, HDL is a global company that manufactures customised building automation products, and professional stage lighting equipment. Having a truly worldwide presence, HDL offices can be found in over 80 countries.

The solutions provided by HDL fall into four distinct categories: HDL Buspro Home/Building automation system, HDL KNX/EIB Bus series, HDL Wireless and HDL Architectural/Theatre Lighting Control system. Our products and solutions promote energy-savings, centralised control, comfort, convenience, added security to customers across the globe.

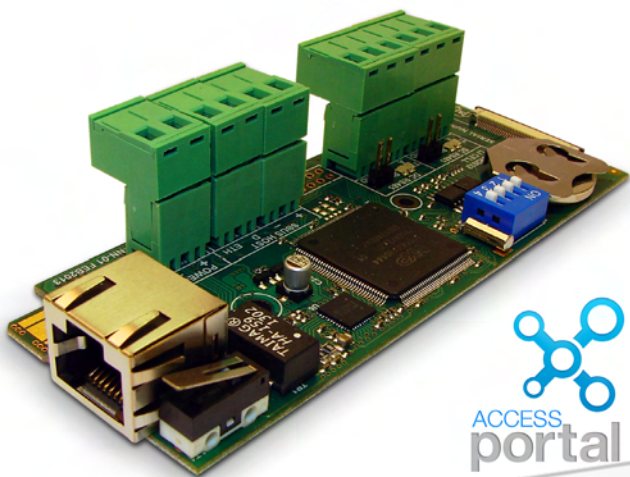


VIDEO ENTRY SYSTEMS (Intercom systems)

BPT (now part of CAME Group) is a leading Italian manufacturer of Audio/Visual Entry Systems since 1953. By having all manufacturing carried out in Italy, the design, production and quality control of all systems and parts can be strictly controlled. BPT systems include a 3 Year Warranty.

Thanks to the XIP Video Entry system BPT brings the ability to receive video calls from your front door via your favourite Android or Apple smart phone/tablet while at or away from the home/office





Impro Technologies is South African Company, with over 20 years' experience in the manufacturing industry. Impro design, develop and manufacture class-leading access control systems, exporting to more than 65 countries

Impro products use the latest electronic technology; have platform independence (pure Java) source code, web-browser based structure for complete network communication, and true open architecture at their core. This allows a link to even the most complex ERP systems, such as SAP

ACCESS CONTROL

- Residential
- Commercial
- Multi Sites

STANDARD FEATURES :

- Quick to install, simple to configure
- Time and event triggered actions
- Door mode patterns
- Access Group
- Programmable holiday
- Tag programming
- Multiple tags per tagholder
- Tag expiry
- Tag suspension facilities
- Anti passback control
- SQL database
- Customised operator security facilities
- Customisable web reports
- Browser based user interface
- Auto hardware configuration
- IP controllers
- Web visitor enrolment
- Biometric integration
- Multi site
- Password protected
- Encrypted communications

GATE AUTOMATION

- Sliding & Swinging Gates
- Boom Gates & Bollards

A blend of design and modern technology of illumination: the exclusive incorporated flashing light with a lighted LED diffuser needs no special maintenance and ensures complete visibility of the warning light.



The protective guard on the bar is a standard feature to protect the user from possible risk when the bar is in rotation.



Perfectly integrable: the safety photocells are applied directly onto the bar and integrate harmoniously and aesthetically with the automated device.

Command electronics: protected by a die-cast aluminium guard, it is positioned to make any type of intervention extremely practical.



Round tubular bar: an electronic contact automatically interrupts the power supply voltage as soon as the inspection door is opened.

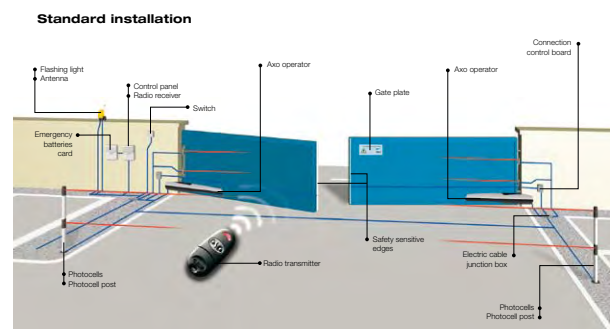
Elliptical tube bar with rubber shock-resistant profile: cuts down on wind drag, to ensure proper operation even in extremely windy conditions.

Intermittent lighted cable cord: superior visibility of the arm and maximum durability of the light fixtures.

Differentiated sensitivity spring: for exceptional balancing of the bar.

CAME Cancelli Automatici is one of the largest automation manufacturers in the world. All motors and electronics are manufactured and assembled in Italy, enabling CAME to proudly display the "Made in Italy" logo and offer a 2 Year "Back to Base" Warranty.

Automation systems for residential and industrial entrances, parking and access control solutions





IP CCTV

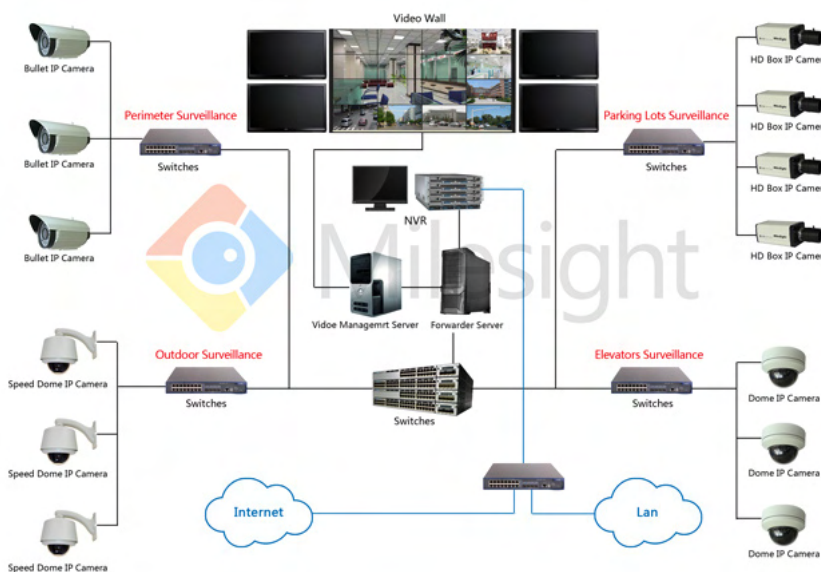
- Bullet & Dome
- Indoor & Outdoor



1.3/2/3/5 Megapixel
IR Mini Dome
Network Camera



1.3/2/3 Megapixel
Weather-proof
Mini Bullet Network Camera



Milesight is a professional high-tech enterprise specialised in designing and manufacturing the best in class megapixel network cameras with superior image quality, exceptional flexibility and reliability for IP video surveillance.



www.sfere.com.au

**SFERE Group Australia
P: +61 2 9746 9991 F: +61 2 9746 8891
Unit 55, 11-21 Underwood Road
Homebush NSW 2140
Australia**