

Luxury Vinyl Tile

Zhangjiagang Yihua Rundong New Material Co.,Ltd.
Add: Yangshe Town Industry Development Area Zhangjiagang Jiangsu China 215600
Tel: 0086 - 512 - 5867 3678 / 5869 9109
Fax: 0086 - 512 - 5868 6138 / 5867 3678
E-mail: Jean@yihuaplastic.com
www.yihuaplastic.com



Ideal Space Created by YIHUA

易华
YIHUA RUNDONG



Ideal Space Created by YIHUA

易华
YIHUA RUNDONG



Contact

YIHUA is an exploiter in vinyl flooring development



Factory 1

Zhangjiagang Yihua Rundong New Material Co., Ltd is the first company in China that brought in the international advanced streamline of producing PVC vinyl floor tiles. YiHua vinyl floor tile has successfully stepped into international market with its excellent quality and innovation. Yihua outputs more than 12000 shipping containers or assorted tiles every year. And Yihua is offering over different patterns and currently exporting 95% of our product, which make Yihua listed as one of the "Top 500 Export Enterprises in China".

Why choose Yihua as partner?



With a long history of creating functional yet beautiful, long-lasting flooring

Extreme strict quality control

Super large production capacity

New product innovation

Advanced production facility

Excellent reputation in international market

Considerable sales service

Company Profile

In order to improve the capacity of market development, Yihua has changed its sales strategy from passive sales to initiative sales. We have established business relationships with many floor tile distributors and franchisers all over the world, building up an impressive worldwide sales network. At the same time, Yihua is backed by an experienced team of sales personnel that have opened up international markets for company thereby increasing our export sales volume year after year.

Competition between enterprises is actually the competition of talent, therefore we have carefully selected our staffs in order to keep our company in the forefront of all competitors. Every year we recruit the brightest and best students to join our research, production, and sales teams. Based on talent of staff and our excellent facilities, continuously develop new products to meet ever changing market needs.

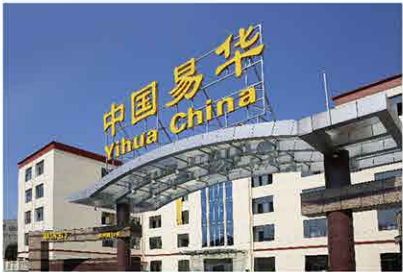
Having grown from a small enterprise to one of the largest PVC tile manufacturers and exporters in China.we are poised to become a global leader in this industry. If you have business requires any of our product , please feel free to contact us directly for your detailed inquiries. We look forward to building rewarding partnerships with companies worldwide.



Factory 2



Factory 3

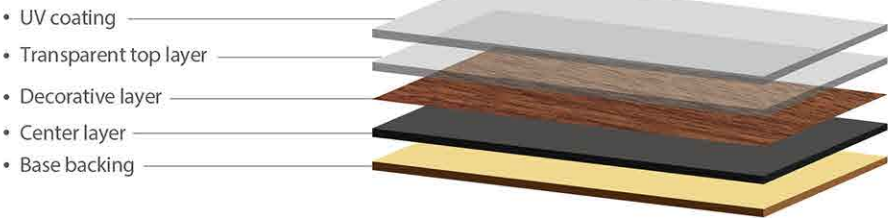


Factory 5



Products Category

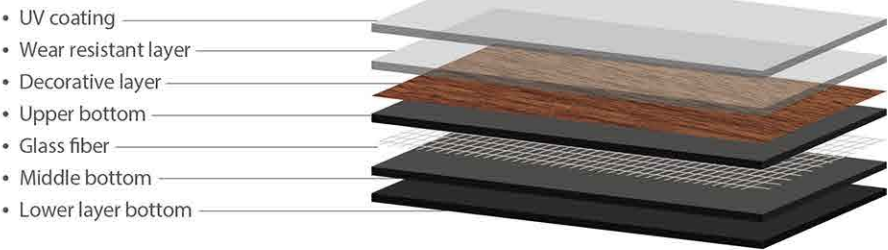
Dry Back



Available size:

18"x18"(457.2x457.2mm)	Thickness from 2.0mm to 3.0mm
12"x24"(304.8x609.6mm)	Wearlayer from 0.1mm to 0.7mm
4"x36"(101.6x914.4mm)	
6"x36"(152.4x914.4mm)	
9"x48"(228.6x1219.2mm)	
9"x59"(228.6x1500mm)	

LVT Click

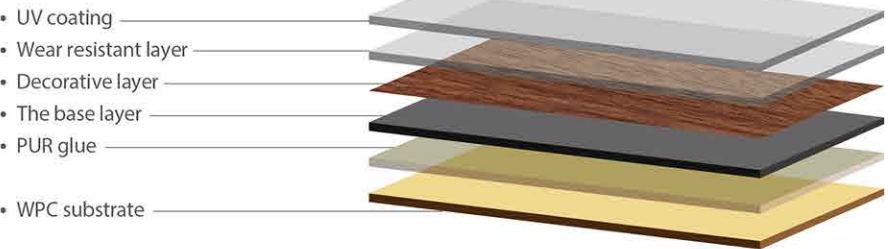


Available size:

180x1210mm	Thickness 4.0mm 4.5mm 5.0mm
220x1210mm	Wearlayer :0.3mm 0.5mm
304.8x609.6mm	Available for length 1.5m and 1.8m



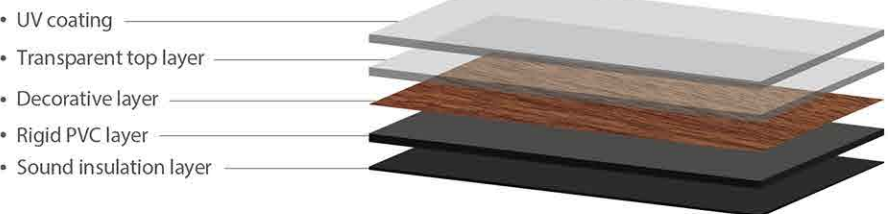
WPC Click [Both available for unilin click and valinge click system]



Available size:

180x1210mm	Total thckness:5.5mm 6.0mm 6.5mm 7.0mm
220x1210mm	Wearlayer : 0.3mm 0.55mm
	Available for length 1.5m and 1.8m

SPC Click [Specially for residential use]



Available size:

172x1210mm	Total thickness is 4.0mm /4.5mm/ 5.0mm
218x1210mm	Wearlayer : 0.3mm 0.55mm
300x600mm	

Loose Lay [Anti-slip backing or sticky backing]



Available size:

9"x48" / 18"x18" / 18"x36"	Thickness is 4.0mm 5.0mm
	Wearlayer :0.3mm 0.5mm 0.7mm

Yihua Contents

07	PVC Plank Collection
08-36	Normal Emboss Wood Series. (All colors available for below emboss:) Nature wood. Deep emboss. Tick emboss. Handscrape emboss. Sawcut emboss.
37-59	Registered Series.
60	Stone series Collection
61-75	Stone Series.
76-80	Technical specification and installation guide

PVC Plank Collection

[Available Emboss]



Sawn cut emboss



Hand scrape emboss



Deep emboss



Crystal light emboss



Registered emboss



Tick emboss



Rough tick emboss



Natural emboss



Normal Emboss Wood Series.

YHNW1001



YHNW1003

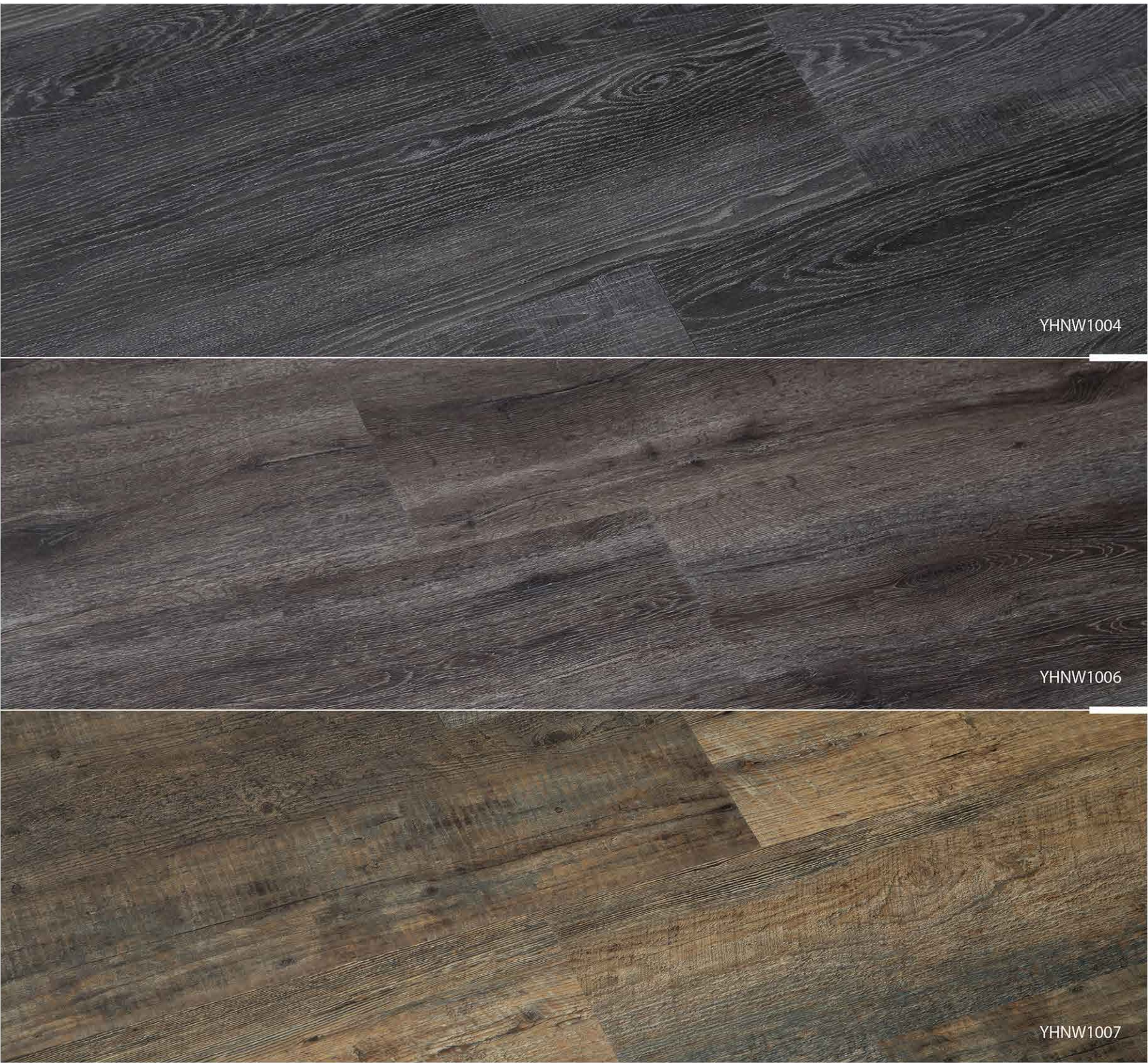


YHNW1005



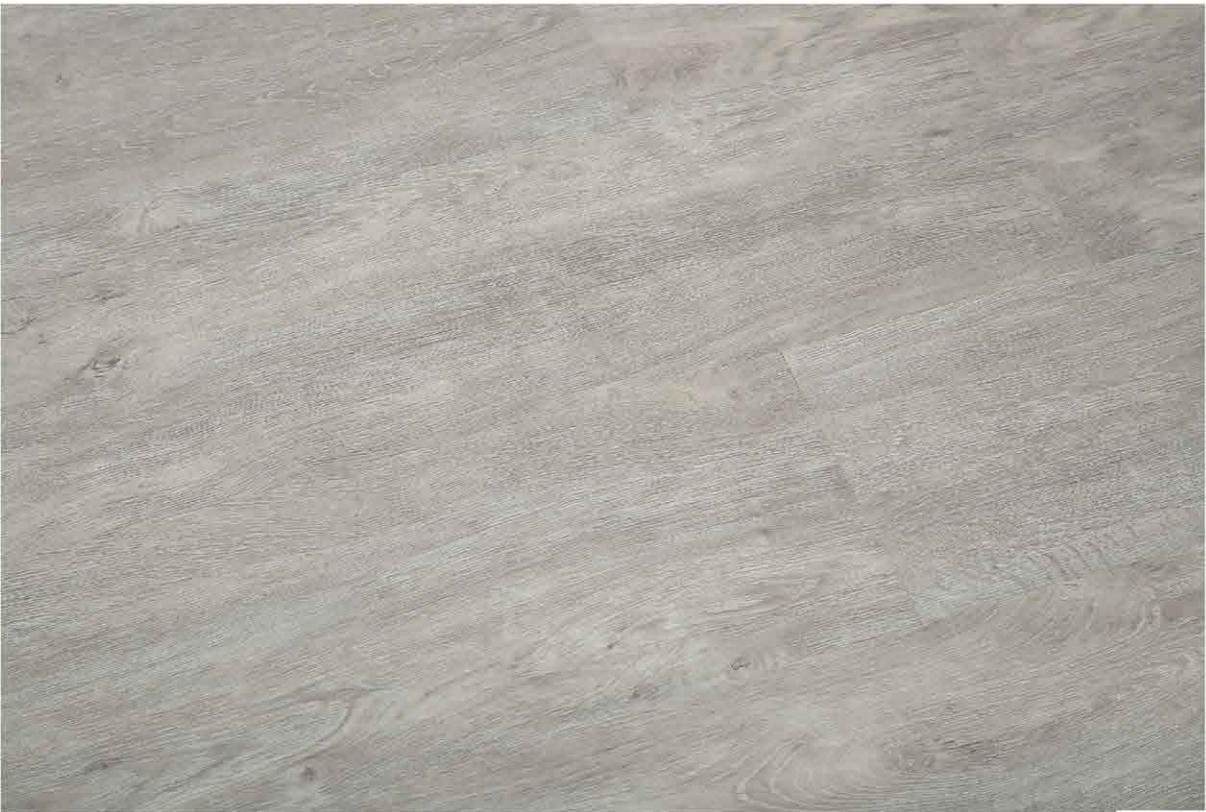


Colors may vary from the actual tiles





YHNW1009



YHNW1010





W702

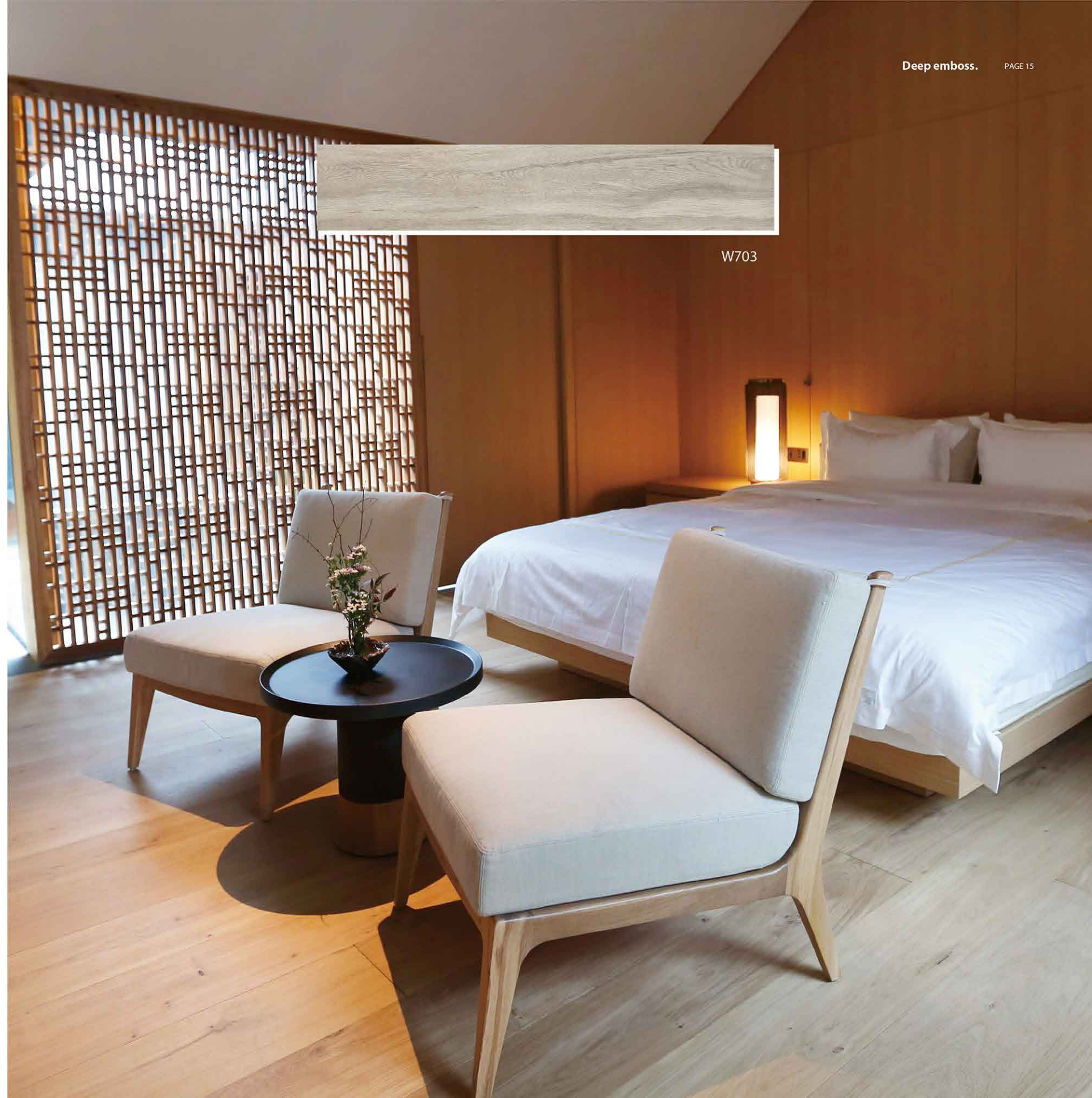


W704



W705

Colors may vary from the actual tiles

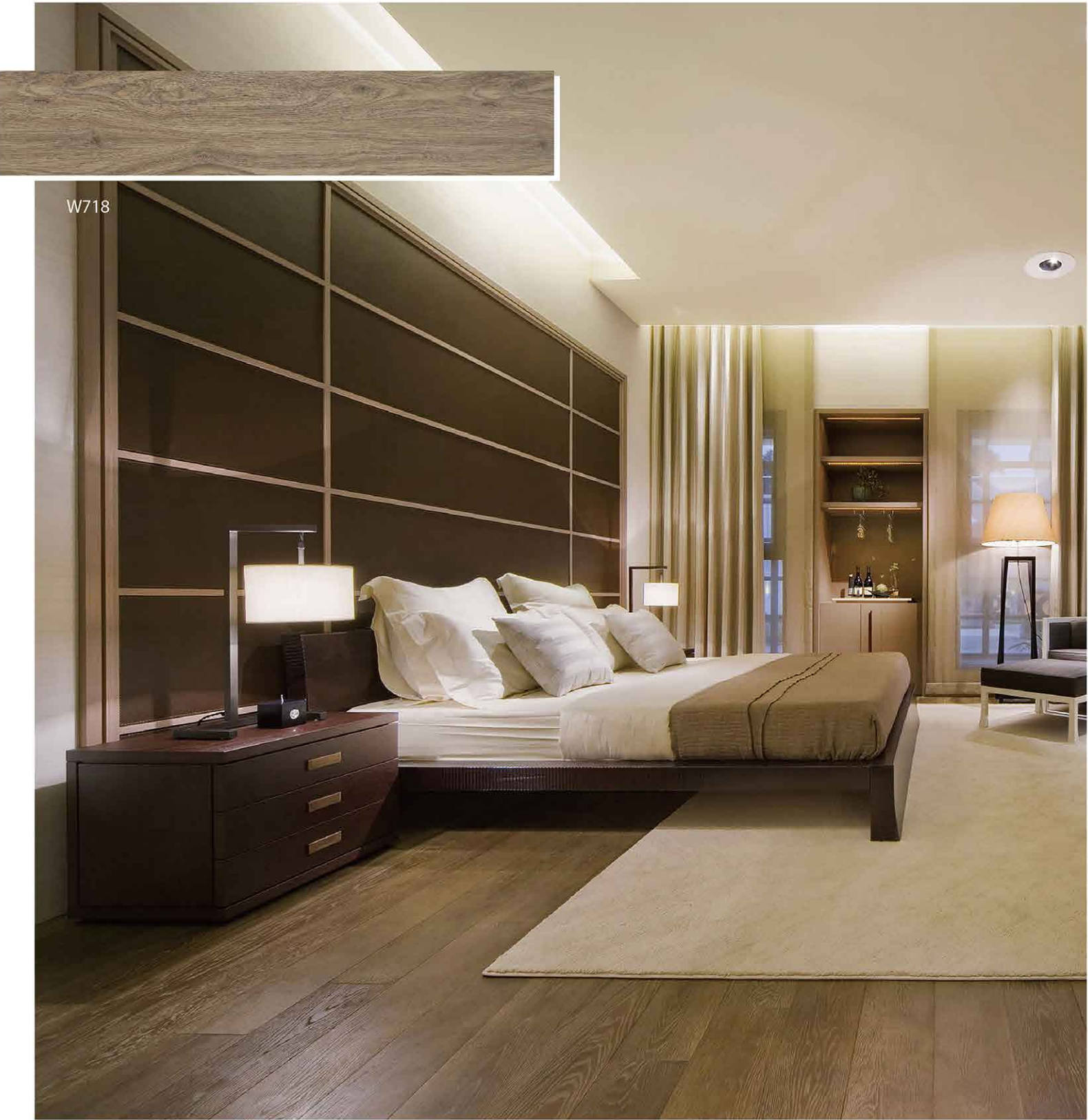


W703



Colors may vary from the actual tiles





W718

Colors may vary from the actual tiles



W719

W720

W721



Colors may vary from the actual tiles





W842

W840



W841



W843



W844



W846



W847



W845



Colors may vary from the actual tiles

W848



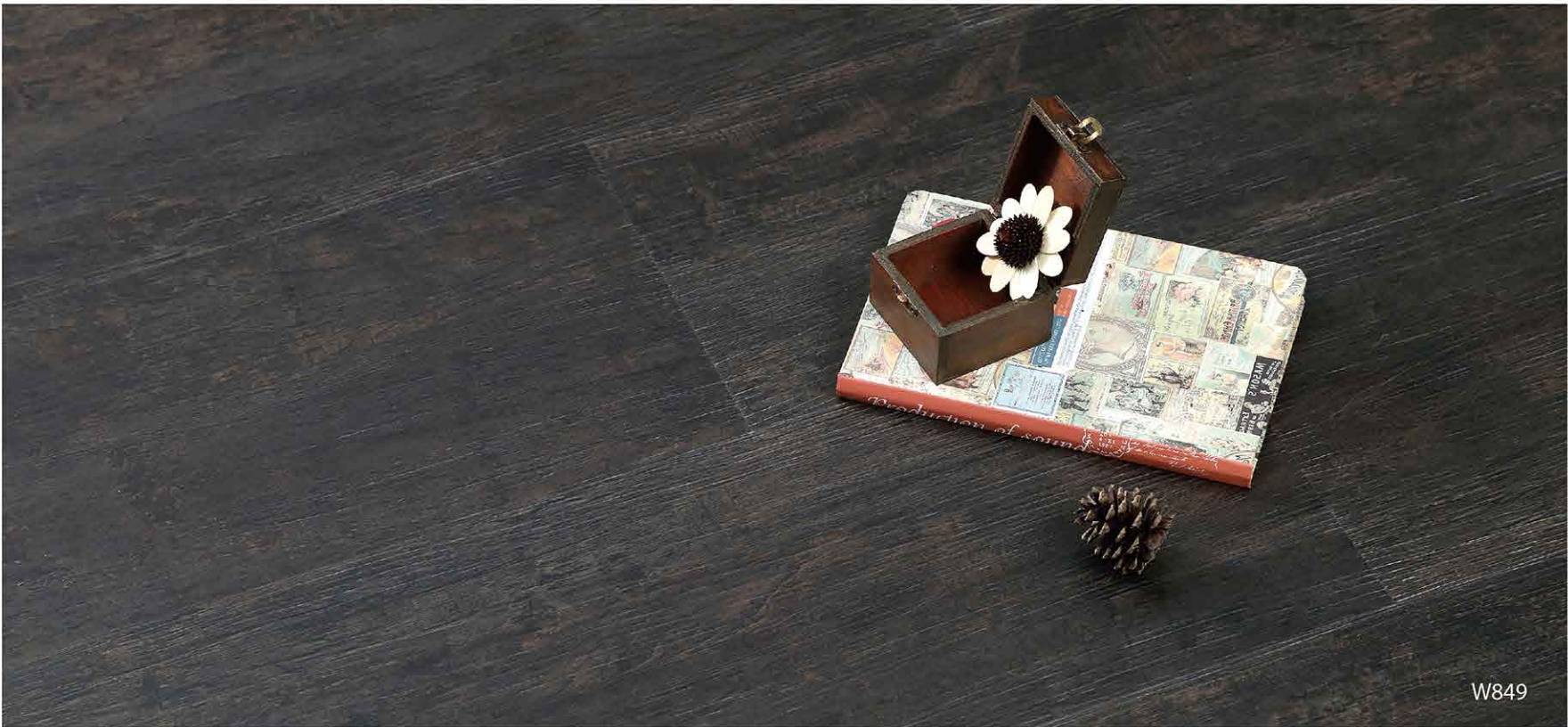
W850



W851



W849



Colors may vary from the actual tiles



Colors may vary from the actual tiles





Colors may vary from the actual tiles



W860



W861





W865



W862



W863



W866



Colors may vary from the actual tiles

W706



W706



W709





W710



W715



W867

Colors may vary from the actual tiles



W865





W869



Colors may vary from the actual tiles



Registered Series.



YHRE2701



YHRE2702



YHRE2704



YHRE2705



YHRE2703

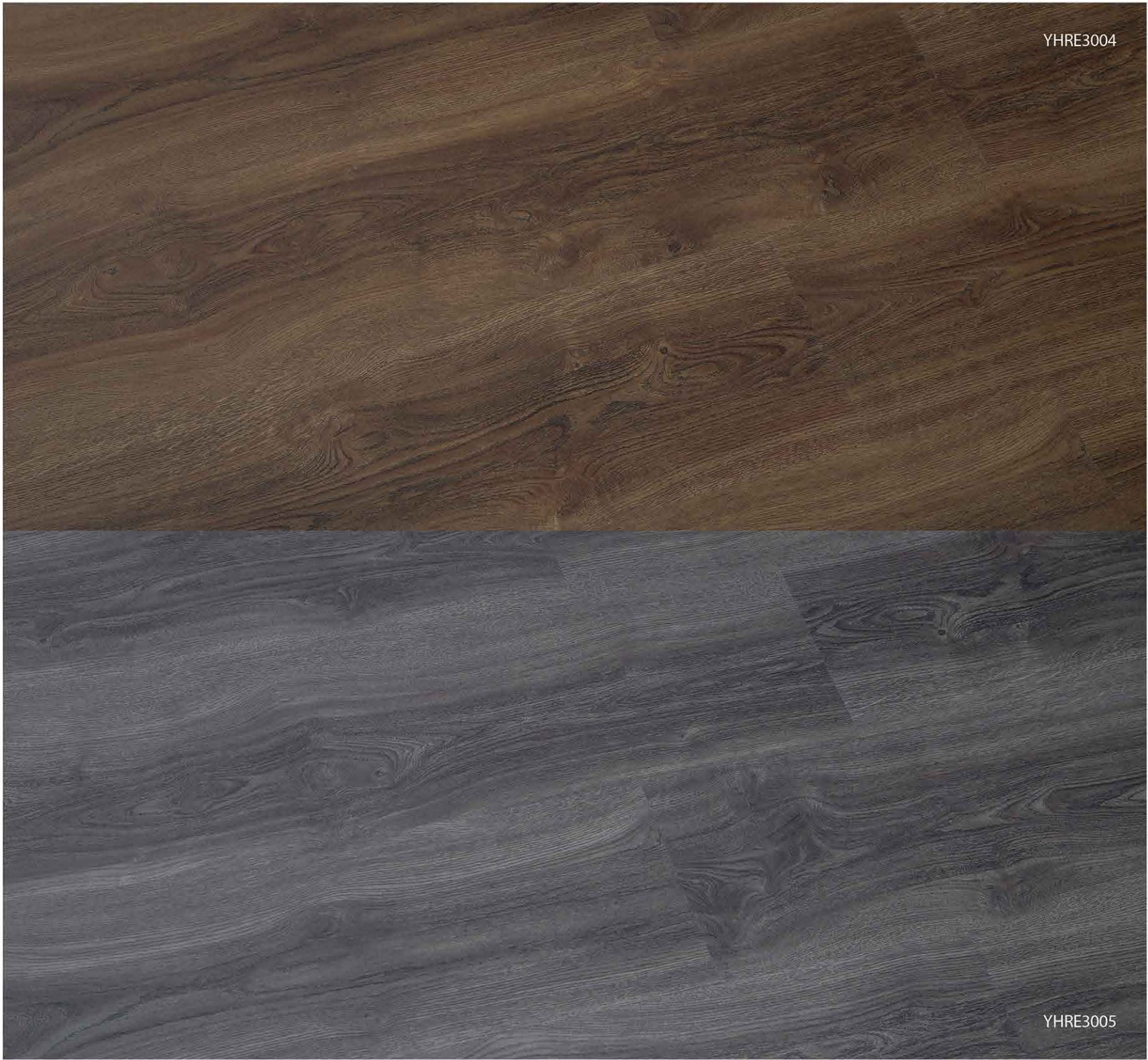
Colors may vary from the actual tiles



YHRE3001



Colors may vary from the actual tiles





Colors may vary from the actual tiles

Registered Series.





YHRE4004

YHRE4005

Colors may vary from the actual tiles



YHRE4101

YHRE4102

YHRE4103



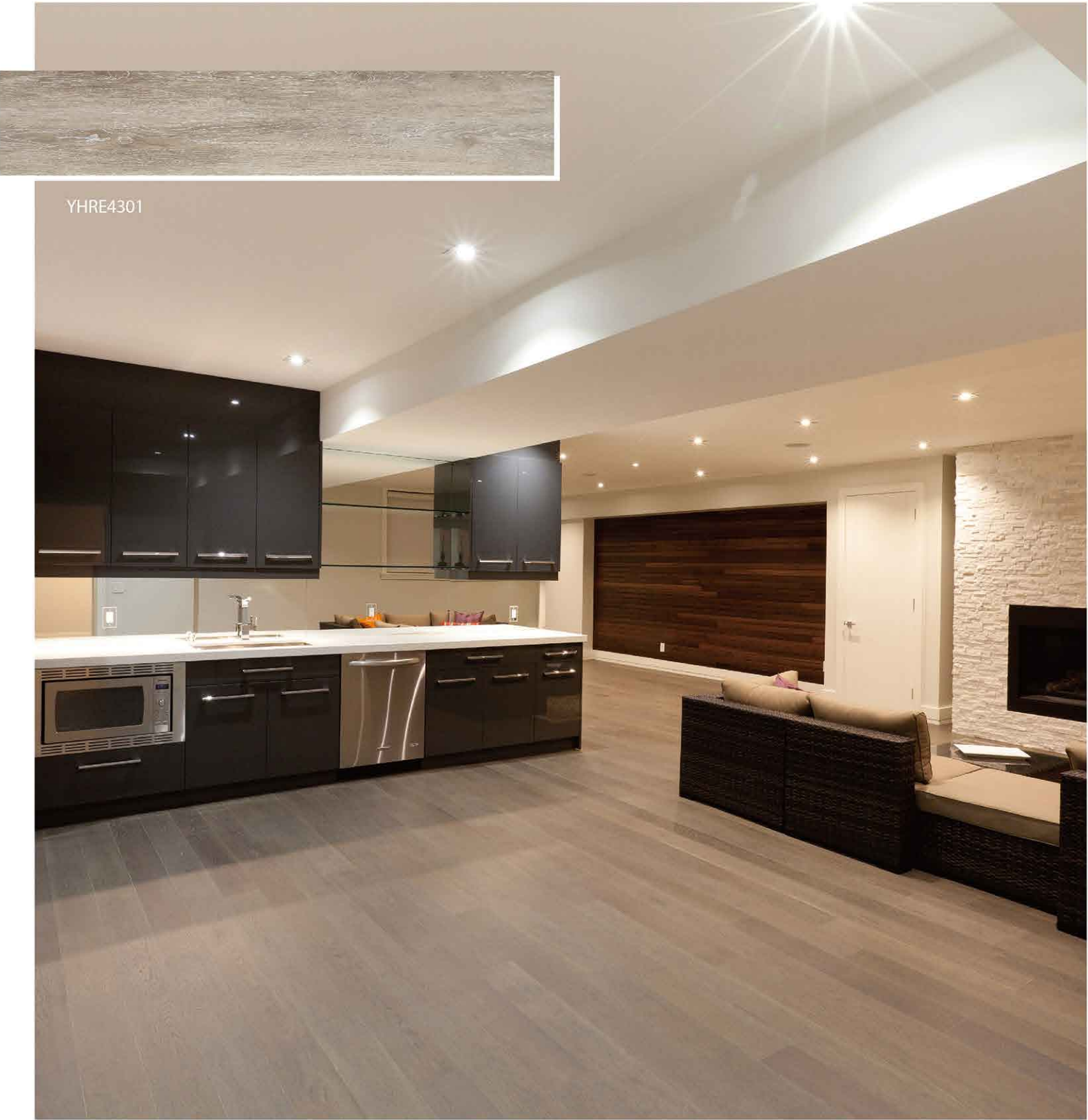
YHRE4104



YHRE4201

YHRE4202

Registered Series.



YHRE4301

Colors may vary from the actual tiles



YHRE4302

YHRE4303

YHRE4304



Colors may vary from the actual tiles





Colors may vary from the actual tiles





YHRE5005

Colors may vary from the actual tiles



YHRE5006

YHRE5007



Colors may vary from the actual tiles



Stone series Collection

[Available Emboss]



Sand Stone Emboss



Shale Emboss



Delicate Emboss



Coral Emboss



Stone Series.



CLM531-1



Colors may vary from the actual tiles



CLM531-2



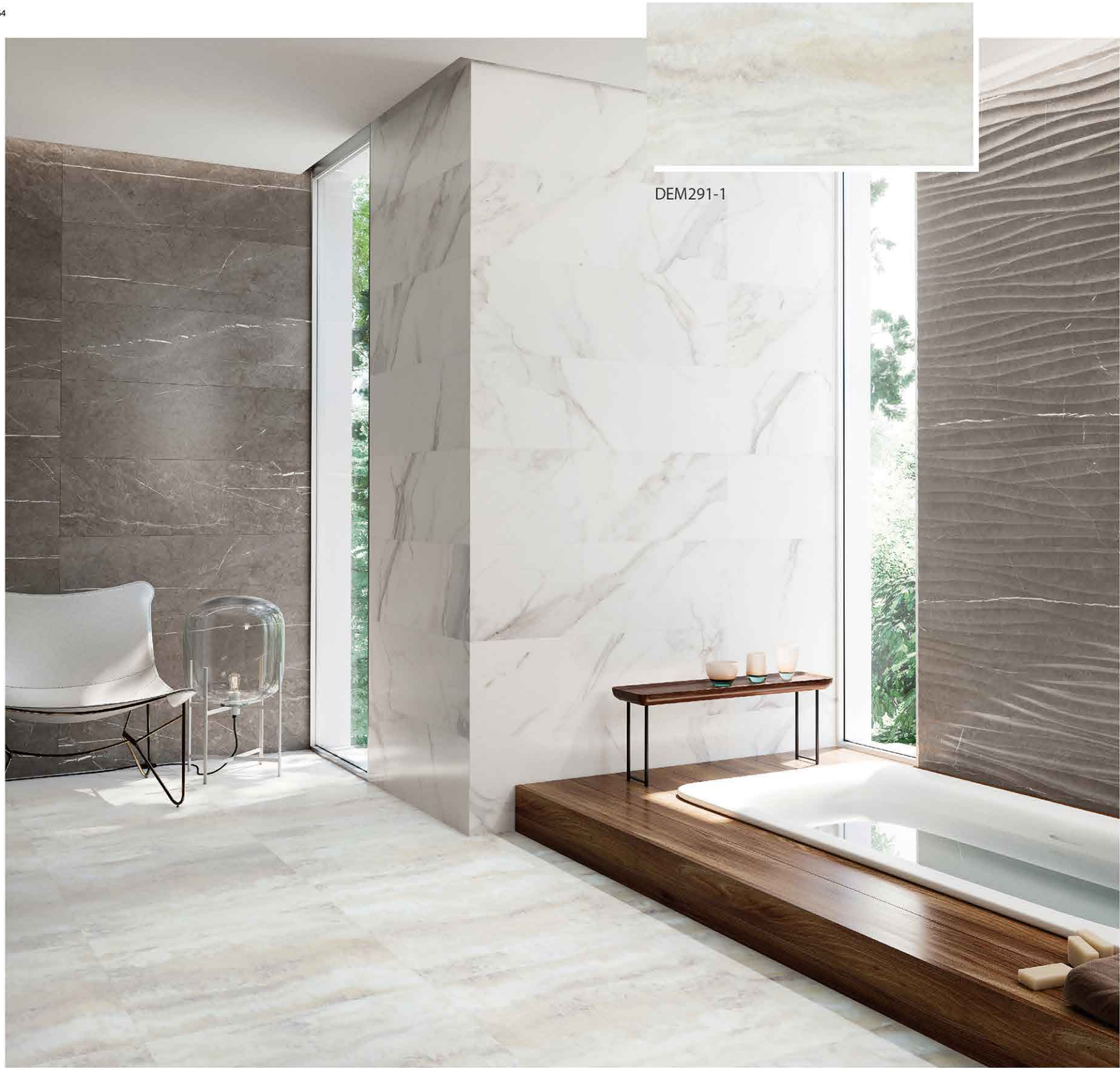
CLM531-5



CLM531-10



CLM531-D16



DEM291-1



DEM291-3



DEM291-5



DEM291-7



CLM871-3



CLM871-7



CLM871-D09



CLM871-D16



CLM871-8



CLM881-1

CLM881-2

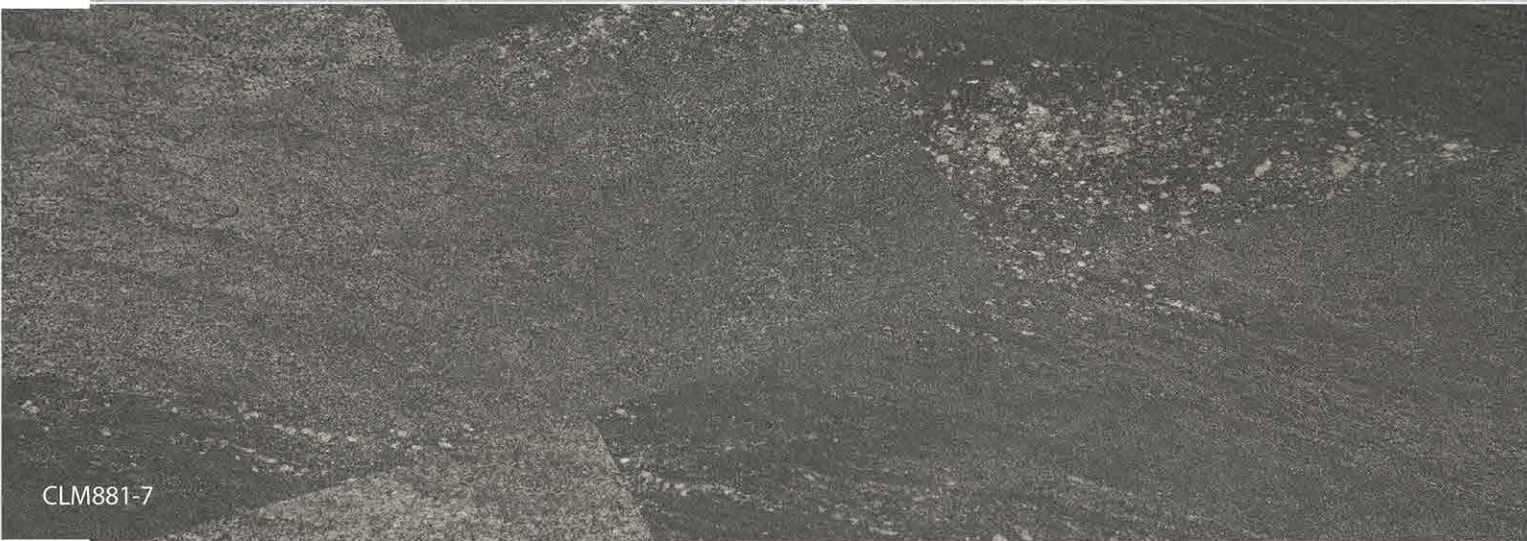


CLM881-3

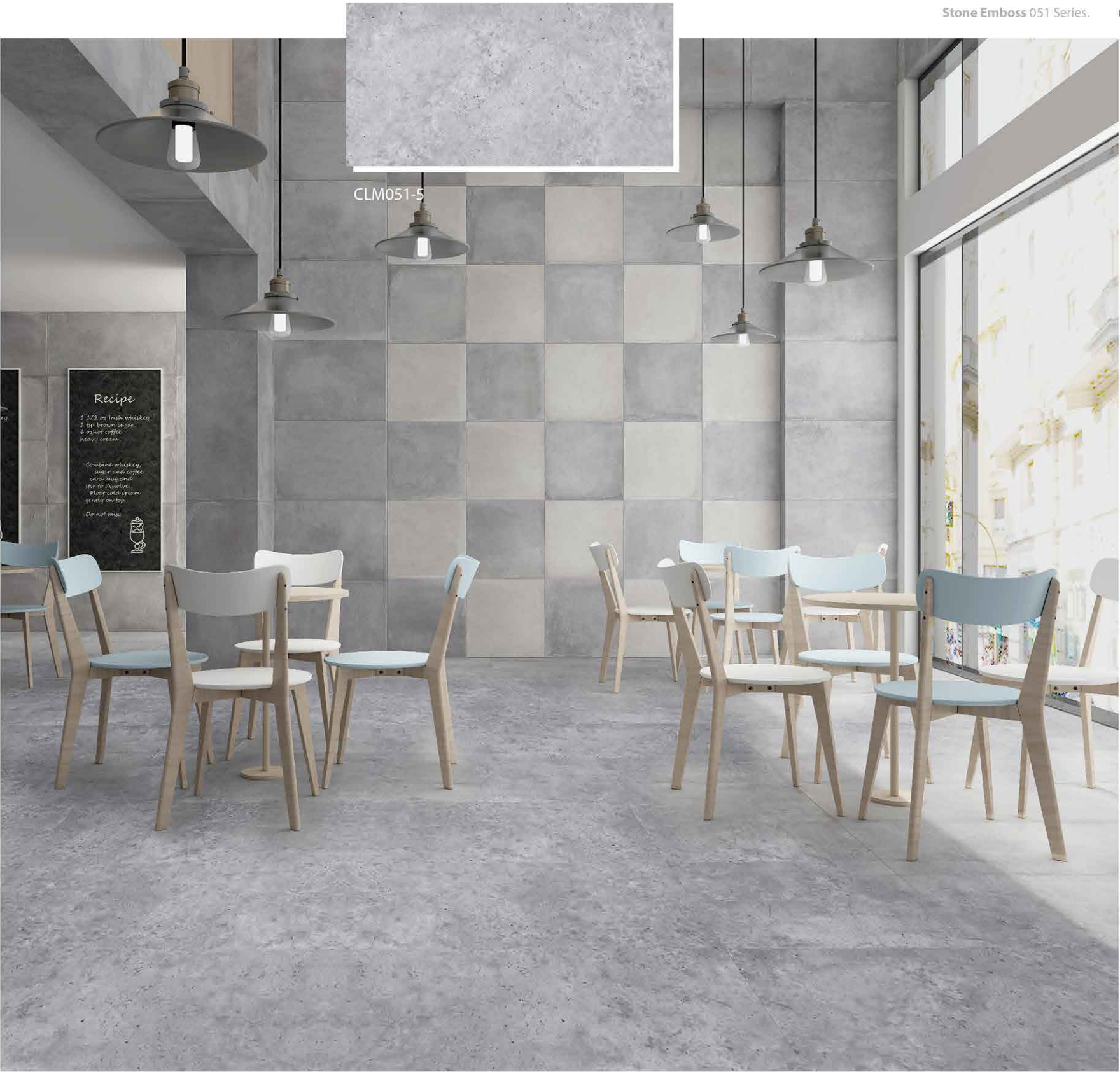


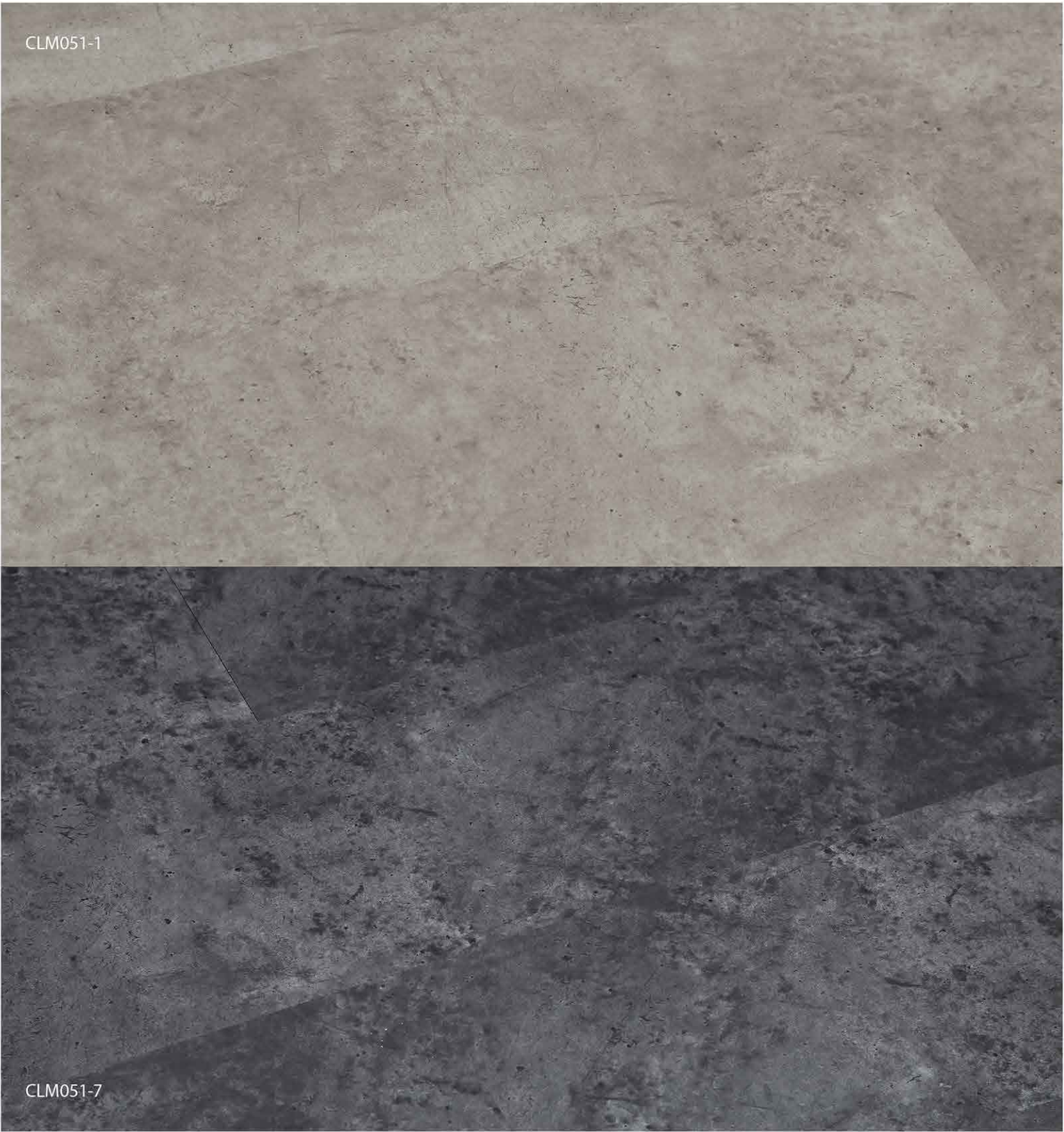
CLM881-4





Colors may vary from the actual tiles







CLM387-3



CLM387-10



CLM387-11

Colors may vary from the actual tiles



CLM329-10



CLM329-12

Dry Back Vinyl plank Technical Specifications

Characteristics	Test Method	Result
Level of use	EN685	23.32
Total thickness	EN428	2.5mm
Wear layer	EN429	0.5mm
Total weight	EN430	4400g/m2
Dimensions(planks)	EN427	152.4*914.4mm
		184.15*1219.2mm
		228.6*1219.2mm
Dimensions(tiles)	EN427	304.8*304.8mm
		304.8*609.6mm
		457.2*457.2mm
Squareness and straightness	EN427	≤0.12mm/≤0.15mm
Surface treatment	--	UV
Warranty	--	25 Years Domestic 7 Years Commercial
Smoke density	DIN4102	Class B1
Slip resistance	DIN51130	R9
Pendulum test	B57976- 2: 2002	Dry 62 (low)
		Wet 50(low)
Wear group classification	EN 685	21-34 och 43
chemical resistance	EN 423	pass
Castor chair resistance	EN 425	pass
Residual indentation	EN 433	0.05mm or less
Dimensional stability	EN 434	pass
Flexibility	EN 435	pass
Abrasion resistance	EN 660	Group T thickness loss 0.068mm
Sound reduction	DIN 52210	4 dB
Light stability	ISO2105 b02	>6
Underfloor heating	--	Suitable,max +27 °C
Fire classification	EN 13501-1	Bri-S1

Installation Guide -commercial LVT

General

Then execution of floor-covering work is construction work within the terms of the German Construction Contract Procedures (VOB). The VOB Part C DIN 18365 “Flooring Work” thus provides the basis for the execution of flooring work and the laying of flooring.

Before choosing the appropriate floor covering it is always necessary to know the on-site type of use and existing sub-floor in order to select the right and proper flooring. Only in this way can added value and value maintenance throughout the planned lifetime of the floor covering be guaranteed.

Sub-floor

The sub-floor must be even, clean, sufficiently dry, free of dust and cracks, and sufficiently load-bearing. It is always necessary to prime mineral sub-floors so that no dust is present on the existing sub-floor. For the use of the recommended dispersion adhesive an even porous surface is furthermore necessary. This is provided by a self-leveling floor compound of at least 2mm thickness.

Before carrying out the flooring work an evaluation of the sub-floor in accordance with DIN 18365 “Flooring Work” is necessary. As design flooring are vapor-proof coverings, residual moisture in the sub-floor is particularly significant. It is to be demonstrated that appropriate measurements have been taken. With existing underfloor heating there should be an appropriate heating protocol to ensure the sub-floor is ready for the installation of the flooring.

Installation Guide - commercial LVT

Installation

✔ Checking the floor covering

Our design flooring undergo a strict quality control procedure that guarantees high-quality standards. If, contrary to all expectations, material problems should be identified on site, there are to be notified before cutting to size and laying. Claims for obvious defects (e.g. Color variations, differences in thickness, surface defects, insufficient accuracy of fit etc.) cannot be accepted after laying.

If a number of packages of design flooring are being used the contents should be checked for batch-to-batch variation before cutting and laying. When ordering it is imperative that reference be made the need for a consistent color-matched delivery with no batch variation.

✔ Interior climatic conditions

The floor covering must be adapt to the room temperature before laying. This requires at least 24 hours acclimation. For installation the room air temperature must not be less than 18 °C and temperature of the sub-floor not less than 15 °C . To ensure the functionality of the appropriate laying materials, relative humidity should not exceed 70% and for humidity-sensitive materials (e.g. Dispersion-based materials) should not exceed 65%. With underfloor heating floor temperatures of between 18 °C and 22 °C are o be observed.

In the winter months the underfloor heating should be kept at a low temperature for at least 70 hours before the floor covering is laid, during laying, and for at least hours after laying (see surface temperatures). Rapid or distinct changes in temperature can cause gaps or warping in the flooring.

These climatic conditions are to be maintained for at least 48 hours before laying the flooring, during installation, and also for at least 72 hours after the flooring has been completed. Larger changes in room temperature are to be undertaken gradually in accordance with the usual room climate conditions.

✔ Laying the floor covering

Priming is always recommended on mineral sub-floor in order to bind dust and particle matter and thus achieve durable adhesion to the sub-floor. In preparation for adhesive application the sub-floor must be coated all over with a floor compound of at least 2mm thickness.

Before laying the design flooring the room is to be measured and assessed in terms of laying direction and starting point.

To allow for temperature variations an edge joint (ca. 5 to 10mm) must always be maintained. This is to avoid warping and buckling caused by dimensional movement of the flooring.

Laying of the flooring should always begin at the center of the room. For this purpose, first snap a string line or a chalk-line to ensure the straight installation of the design flooring in the chose direction.

When determining laying direction and starting point, particular attention should be paid to avoiding unnecessary division of the floor covering in the areas of the doorways and main circulation flows. When laying the elements care should be taken that the planks or tiles are closely abutted but not forced. It should also be ascertained that the adhesive has sufficiently bonded the sub-floor and the underside of the floor covering, particularly that there are no separating layers, unstable zones or dust/dirt. After the floor covering has been set in the adhesive it is absolutely essential that it be rolled so that the adhesive can become fully functional. Depending on the adhesive used, the flooring should be rolled again between 15 and 45 minutes after laying. Please select and appropriate adhesive from our current adhesive recommendations. The adhesive should, in any case, be on in which flooring can be laid when the adhesive is in a wet or a semi-wet state-roll-on adhesive should not be use.

Installation Guide - commercial LVT

Installation

✔ Cutting to size of the floor covering

Cut edges of the floor covering should not be fitted too close to the walls, protruding structures or profiles so as to avoid later deformation of the floor covering caused by material-specific dimensional movement.

It is recommended that the flooring elements be cut to size using a straight-edge or trapezoidal blade to score the surface/wear layer of the flooring. The flooring elements are then snapped “backwards” and trimmed as necessary. In areas adjoining wet rooms, entrance and exit doors and similar areas, the cut edges of the floor covering are to be sealed using an appropriate sealant.

✔ Special instructions for use

Covering entrance areas and transition zones with suitable barrier systems offers effective protection against dirt and water, dust and grains of sand which can cause unnecessary scratches and wear.

✔ Discoloration

In certain cases aggressive substances, such as tar, fats, oils, dye etc, can cause discoloration on the surface of the flooring in strongly frequented areas. Such discoloration can be prevented or reduced by the choice of appropriate color/design and certain measures being taken in terms of usage.

Over longer periods of time migrations from specific types of rubber (e.g. On chair and other furniture feet) can cause irremovable discoloration on resilient floor coverings. This can be prevented either by using appropriate types of rubber with no color transfer or by protecting the floor covering with suitable protective matting. Hair-dye, substances containing alcohol and iodine, and disinfectants can also cause irremovable discoloration of the floor covering. If they come into contact with the flooring they should therefore be immediately removed.

✔ Effects of heat exposure

Smoldering cigarettes carelessly discarded on the flooring cause irreparable surface damage that can only be countered by spot repair of the affected area. With regards to underfloor heating and direct sunlight, it should be noted that the surface temperature of the the floor covering may not exceed about 28 °C.

✔ Office chairs

Office chairs must be equipped with type “W” castors in accordance with DIN 18365 “Flooring Work” and particularly EN 12529 “Wheels and Rollers - Rollers for Office Chairs”. This means that the floor covering (hard surface) requires the use of soft castors. Office chair castors are to be regularly cleaned and maintained during use, and replaced or renewed as necessary.

Cleaning / Maintenance

According to the provisions of the norm DIN 18365 “Flooring Work” the contractor is obliged to present the customer with written recommendations about the cleaning and maintenance of the flooring.

It is recommended that our cleaning and maintenance guidelines be presented in a “verifiable” and “timely” manner.

✔ Maintenance Instructions for design flooring and Click

Our floor coverings provide heavy-duty wear resistance with a resilient polyurethane surface treatment. This protective surface is particularly important during transportation, but also effective against potential damage caused by soiling and other impurities during and after the construction phase.

✔ Preventative Measures

Covering entrance areas and transition zones with suitable barrier systems offers effective protection against dirt and water, dust and grains of sand which can cause unnecessary scratches and wear.

Furthermore, maintenance costs can be reduced significantly and, in the long term, the lifetime and appearance of the flooring can be improved considerably. Cleaning measures taken during the construction phase to remove sand, dust and other disruptive particles make it possible to avoid irreparable damage. It is recommended that our design flooring be covered with suitable material following installation for the remaining construction work.

✔ Final Construction Cleaning

After construction work has been completed, our design floors are to be thoroughly cleaned, removing any residues or fatty substances left after construction. We recommend sweeping or vacuuming.

A basic cleaning procedure can be carried out afterwards by damp mopping or byusing a single-disc machine with a white, maximal red pad or a nylon brush. The basic cleaning procedure can also be carried out using a roller cleaning system or a scrubbing machine together with an alkaline basic cleaning agent. The dirt loosened through this procedure will be absorbed accordingly.

Areas that are difficult to reach, e.g. Corners, stairs, edges etc. Can best be cleaned manually with hand-held equipment.

Any residues of mortar, stucco or gypsum can be loosened using an acidic-based intensified cleaning agent and then removed with an industrial vacuum cleaner.

Adhesive, tar or paint residues should be removed using a solvent for spot treatment. Test with left-over material prior to use. Once cleaning procedures are complete, any residues from the cleaning agents must be completely removed and the area should be well-rinsed with a substantial amount of clear water.

Before use it is recommendable to polish the floor covering using a single-disc machine and a white pad.

In areas that are less frequented or in residential use, it is usually not necessary to apply additional surface treatment. The manufacturer’s surface treatment offers a solid basis for routine maintenance.

In this case, daily maintenance should be completed using our “Klarwischp-flege”, a transparent cleaning and maintenance product providing slip resistance. This product can be used with both manual maintenance procedures and maintenance using cleaning machines. It can be used to polish the flooring with a cleaning machine, if required. The “Klarwischpflege” is available with a silk-matte finish, providing both a cleaning and protective effect.

Installation Guide - commercial LVT

In heavily frequented areas subject to heavy-duty wear, it is recommendable to apply two treatments of our sealer (acrylate -polyurethane- copolymer). This product is available in a silk-matte or silk gloss finish.

In order to enable good adhesion to the existing polyurethane surface treatment, it will be necessary to roughen the surface using a single-disc machine and a green pad. The resulting dust must be removed thoroughly from floor coverings that have coarsely grooved surface structures using a vacuum cleaner. In the case of flooring with smooth surfaces, the dust can be vacuumed away or removed using a special wiping cloth.

Before using our sealer it must be shaken well and can be applied using a short-napped microfiber mop, a short-napped wool wiping cloth or a short-napped lacquer roller.

During application excessive exposure to sunlight and high room temperatures should be avoided. Underfloor heating should be turned off so that the surface treatment can dry free of any streaks and bubbles. Avoid any draught. Should the situation require special steps, the sealer can be mixed with up to 5% water in order to avoid too rapid drying.

Two applications in thin layers should be made with at least 45 minute intervals. The surface can be polished using a machine in order to make the treatment more compact and enable the surface to be accessed more quickly. The application is to be made crosswise at a 90° offset, in which case the last application should ideally run towards the biggest source of light (window).

If the design floorings have coarsely grooved surface structures, the application should be made lengthwise to the grooves. The sealer can be poured directly on to the flooring surface and spread with a mop or a wool wiping cloth or it can be applied from a container using a lacquer roller. Application should be made overlapping to avoid visible transitions.

After about 2 to 4 hours of drying time, the area can be accessed and after about 3 days it can be subject to normal use. It will take one to two weeks before the sealer is completely hardened.

This sealer is also recommendable in health-care facilities as it is resistance to most flooring disinfectants and, largely, to disinfectant sprays containing alcohol if these are immediately removed from the surfaces.

However, it is recommended that these qualities be tested in a low-key area in order to determine suitability on an individual basis. If disinfectant sprays containing alcohol are left on for longer periods of time they may leave white traces or visible damage. These can be removed using a fine pad (white, max. red).

✔ Routine Maintenance

Manual cleaning using cleaning equipment, depending on the amount of soiling, done on a weekly basis or daily basis, is called routine maintenance. Our “Klarwischpflege” is recommended as a cleaning agent and for maintenance. The clear gloss cleaner can be used manually or in a cleaning machine. It can be polished following use. The resulting layer is transparent, matte and slip-resistant, must be removed immediately.

Depending on the amount of use, design flooring with coarsely grooved surface structures may gather particles of dirt in the grooves which can no longer be removed through manual wiping procedures. In such cases, it is recommended that an interim cleaning procedure be undertaken using a roller cleaning system or a single-disc machine (nylon brush) to loosen up the particles of dirt and remove them. In smaller areas it may be possible to achieve the same result through manual scrubbing with repeated wipe downs.

✔ Basic and Intensified Cleaning

Should the protective surface treatment provided by our sealer be worn off or scratched and thus become unattractive after years of use, it is possible to use a single-disc machine with a green pad or a nylon brush together with an alkaline basic cleaning agent to remove the rest of the sealer. A new application of the sealer can then be made. For this purpose, the surface is treated using the basic cleaner in the right mix ratio and machine cleaned after a shot, max. 10 min. application time.