

# **Formwork Scaffolding Engineering**

## **The most appropriate solution for each and every requirement**

Product Portfolio





# Content

Wall Formwork	2
Column Formwork	3
Slab Formwork	4
Universal Formwork	5
Individual Formwork	5
Shoring Systems	5
Working Scaffolds	7
Access	8
Climbing Systems	8
Civil Engineering Systems	10
System-Independent Components	10
Services	11

# Wall Formwork



## MAXIMO Panel Formwork

**The cost-effective system with MX tie technology and simultaneously providing the best concrete finish**

### Faster tie installation

through the one-sided tie technology without spacer tubes and cones

### Fewer ties

through the optimised tie point arrangement

### Improved concrete finish

through the neat joint and tie arrangement



## TRIO Panel Formwork

**The proven, universal panel formwork with only one connecting part**

### Easy and simple connections

with the BFD Alignment Coupler as the only component for all panel connections

### Fast work operations

with only a minimum of panel widths as well as panels that can be used both horizontally and vertically

### Large-area shuttering

with panels up to 3.30 m x 2.40 m – providing a high level of surface evenness and only 2 tie positions



## VARIO GT 24 Girder Wall Formwork

**The variable wall formwork with the proven GT 24 formwork girder**

### Adaptable to suit all requirements

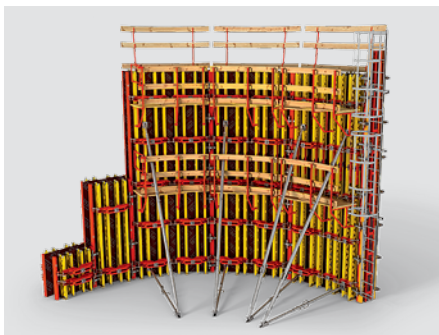
through the variable arrangement of formwork girders and walers

### Also for architectural concrete surfaces

due to the freely-selectable tie positioning and joint arrangement in accordance with the planning specifications

### Continuous adjustment

through the elongated holes in the walers and couplings with flush, aligned and tight panel connections



## RUNDFLEX Circular Wall Formwork

**Continuous and quickly adjustable circular wall formwork for radii with diameters greater than 2.5 m**

### Low installation effort

with pre-assembled units and the proven BFD Alignment Coupler

### Fast adjustment

through a simple adjustment procedure by means of a template and spindles with self-cleaning hexagonal threads

### Especially variable

through the flexible adjustment of wall internal radii of 2.5 m and larger



## GRV Articulated Waler Circular Formwork

**For forming circular structures without the use of ties**

### Forming without ties

due to the closed ring of walers

### Continuously adjustable

for all internal radii greater than 90 cm

### Very versatile use

for containers or a wide range of arched bridges

# Wall Formwork



## SB Brace Frame

Reliable load transfer for single-sided forming operations up to 8.75 m high

### Very versatile use

with all PERI wall formwork as well as horizontal heavy-duty brackets

### Quickly connected without additional components

as all required connection parts are already mounted on the Brace Frame

### Easy to transport

through matching the individual component geometries to suit truck and container dimensions



## RS Push-Pull Props

A complete programme with extension lengths up to 14.00 m

### Fast and safe handling

Rough adjustment and fine adjustment take place safely within seconds from the installation area

### Used also with prefabricated concrete elements

Push-Pull Prop Adapter and Quick Connector mounted from a safe position

### Durable

Galvanised tubes and threads ensure permanent protection against corrosion and a long service life

# Column Formwork



## TRIO Column Formwork

The sensible supplement to TRIO wall formwork

### Easy and simple connection

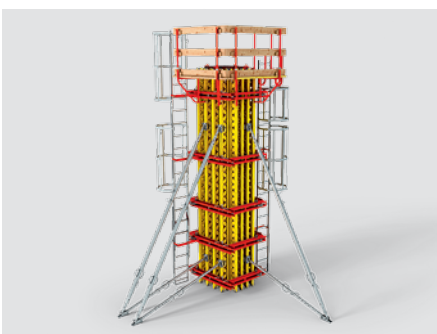
of extended panels at the joints with the proven BFD coupler

### No nailing of chamfer strips

due to the clamping mechanism and PERI chamfer strip

### High number of re-uses

through the robust design of the panels



## VARIO GT 24 Column Formwork

For continuously variable cross-sections, all heights and architectural concrete requirements

### Continuously adaptable

to match rectangular and square column cross-sections of all sizes

### For architectural concrete surfaces

through project-specific construction with any type of formlining

### For high concrete pressures

through individual arrangements of formwork girders and steel walers

# Slab Formwork



## SKYDECK Panel Slab Formwork

The proven aluminium panel slab formwork with very fast shuttering times

### Effortless working

with very lightweight and easy to handle components

### Easy cleaning

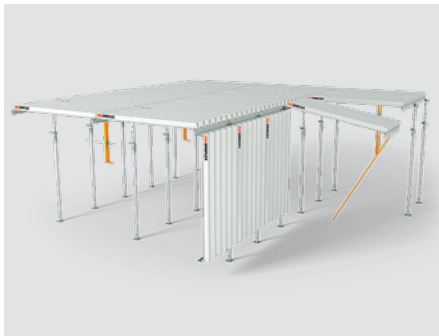
through powder-coated elements, components made of plastic, and undercut panel edges

### Fast forming

due to the simple and systematic assembly sequence with only a minimum of props

### Minimal on-site material requirements

due to early striking with the drophead and fast deployment of the panels and beams in the next level



## GRIDFLEX Grid Element Slab Formwork

The slab formwork for simple assembly and a high level of working safety

### Safe shuttering procedure

by swivelling the elements upwards with site personnel positioned on the slab below

### Simple working operations

with one standard and two compensation elements as well as the GRIDFLEX Prop Head

### Filler areas are quickly closed

through a simple change of direction of the elements along with the use of transverse and longitudinal infills



## MULTIFLEX Girder Slab Formwork

The flexible girder slab formwork for all ground plans and slab thicknesses up to 1.00 m

### Optimised use of materials

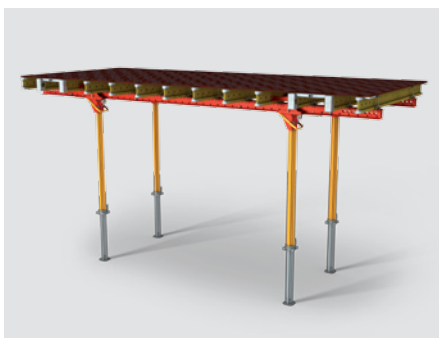
through any combination of GT 24 and VT 20K Formwork Girders as well as a freely selectable girder arrangement

### For all ground plans

through variable positioning of the girders

### For all surface requirements

with freely selectable formlining for the stipulated quality and adaptable to suit the required joint arrangement



## VARIODECK Steel Waler Slab Table

The slab table for large areas and heavy pre-fabricated parts

### Quickly ready for use

through the provision of pre-assembled tables

### High load-bearing capacity

with longitudinal-positioned steel walers which allow large cantilevers or can accommodate heavy prefabricated parts

### Flexibly adaptable

by continuously moving the Table Swivel Head  $\pm 15$  cm



## Project Table

Project-specific planned tables, also for infill areas and special geometries

### Individually planned

in accordance with the respective geometry and load

### With choice of support

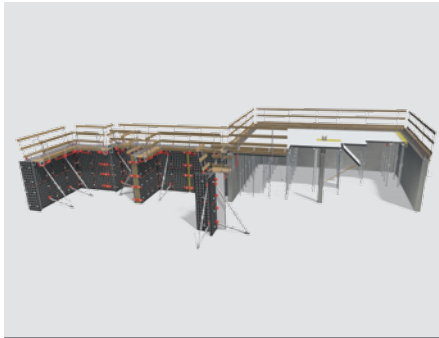
used with individual props or shoring towers up to 20 m high

### Flexible solution for the Table Head

executable with a fixed connection or as Swivel Head



# Universal Formwork



## DUO

The universal lightweight formwork for walls, columns and slabs

### Universally applicable

Flexible forming of walls, columns and slabs using only one system

### Ergonomic in all respects

Low weight, crane-free handling and intuitive application

### Easy replacement of formlining

Quick repair with just a few screws - without requiring any special skills

# Special Formwork



## Custom-designed Formwork

Precision-made for special applications

### Custom manufactured

On the basis of a 3D model, precision manufactured in the PERI formwork construction facility

### Cost-effective

Extremely economical through a high proportion of standard system components from the PERI product portfolio

### Fast assembly

Easy and simple assembly of prefabricated formwork elements on the construction site – similar to a system formwork

# Shoring Systems



## PEP Alpha Slab Props

The tubular steel props for daily use on construction sites

### For 80 % of standard applications

with the preferred support lengths from 1.80 m to 3.50 m

### Practical load-bearing capacities

with permissible prop loads from 20 kN to 40 kN

### Certified and robust design

in accordance with DIN EN 1065

# Shoring Systems



## PEP Tubular Steel Slab Props

The galvanised tubular steel slab prop with up to 50 kN load-bearing capacity

### Load-bearing capacity far beyond the norm

Prop load up to 50 kN – with a comparatively low dead weight

### Quickly adjusted

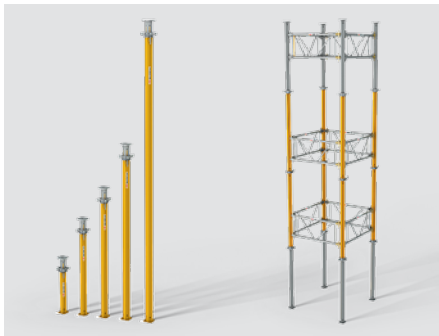
Minimum re-positioning procedure due to the 12 cm adjustment range, measuring scale on the inner tube accelerates length pre-adjustments

### Simple connections

Prop heads can be attached to both the inner and outer tubes

### Trendsetting Adjusting Nut

Shape of the Lowering Nut shows the direction for lowering when under load while the captive handgrip allows easy adjustment



## MULTIPROP Aluminium Post Shores

Equally economical as a lightweight individual props or shoring towers

### Reduced number of props

due to the high permissible leg loads of up to over 90 kN

### Well thought-out details

With self-cleaning thread, trendsetting Adjusting Nut and continuous adjustability

### Time-saving length adjustment

due to the integrated measuring tape on the inner tube which shows the complete length

### Practical wedge connection

for the MRK Frames completely without any time-consuming bolted connections



## STR 100 Stacking Tower

The efficient shoring system with only one frame size for all heights

### Fast assembly

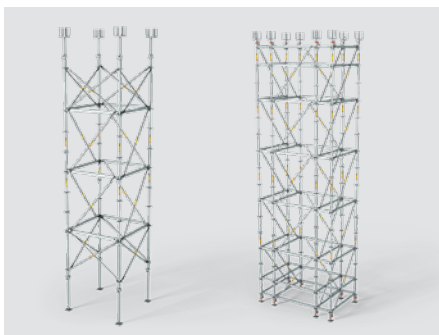
Assembly without bolts or pins – without any tools whatsoever

### Minimum of planning

With only one frame size and without combination tables each application height can be easily planned.

### Extremely easy handling and logistics

With only 5 components and a 63 cm spindling range, all tower heights can be realised



## PERI UP Flex Shoring Tower

The maximum level of flexibility in shoring solutions

### High degree of material utilisation

through the optimal positioning of the standards according to the respective load situation

### Maximum adaptability

with uniform grid size in all three dimensions

### Movable in large-sized units

through extremely rigid node connection between the standards and ledgers

### Flexible compatibility

thanks to the optimal coordination to match PERI slab formwork systems as well as usual steel and timber dimensions



## HD 200 Heavy-Duty Prop

The tool-free assembled prop for loads up to 200 kN

### Fast assembly requiring no tools

through integrated chord couplings for connecting the individual sections

### Assembly by hand

with lightweight individual components – the largest aluminium section weights less than 30 kg

### Controlled lowering

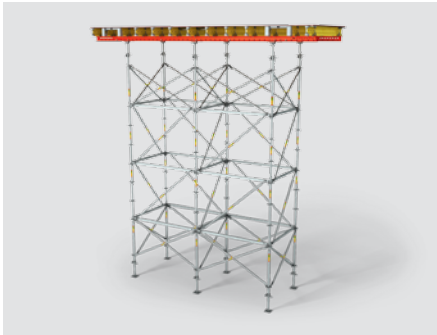
up to 10 cm with the lowering device

### Can also be used as a main beam area

by connecting the props by means of main beams; diagonal bracing with system components without requiring any welding



# Shoring Systems



**PERI UP Flex Shoring Tower Plus**  
The height-flexible table support

**Large spindling range**  
of up to 88 cm in the head and base areas  
**Cost-effective**  
through the use of system components  
from the PERI UP Flex Modular Scaffold-  
ing

**Enhanced load-bearing capacity**  
for heights up to 8.76 m and leg loads  
up to 52 kN



**PERI UP Flex Heavy-Duty Prop HD**  
The heavy-duty prop with integrated load control

**Systematic prestressing**  
with hydraulic cylinders, e.g. for shoring  
in existing buildings  
**Cost-effective**  
through the use of standard compo-  
nents from the PERI UP Flex modular  
scaffolding

**Controlled release under load**  
through the hydraulic cylinder in the  
base  
**Lightweight and small-sized compo-  
nents**  
for easy handling in confined spaces  
during refurbishment for example in  
existing building and industrial facilities

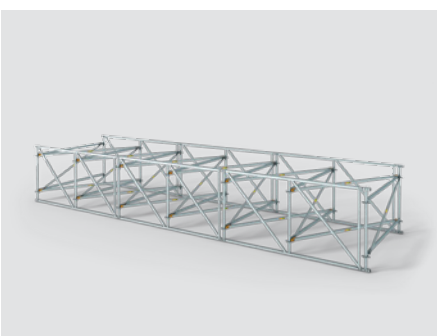
# Working Scaffolds



**PERI UP Flex Working Platforms**  
Safe working at any height through the high flexibility of the modular scaffolding

**Trip and gap-free working levels**  
Working areas are completely covered  
without any gaps and simple conver-  
sions are made to accommodate any ob-  
structions  
**Fast assembly**  
Fast assembly with Gravity Lock and  
self-securing decking (Locking Deck)

**Extremely safe**  
Non-slip due to perforated decking; end-  
to-end protection provided by guardrails  
and toe boards in a signal colour  
**Very high load-bearing capacity**  
Special node rigidity and high loadability  
of the connection



**PERI UP LGS Working Platform LGS 150**  
For wide-span working platforms and temporary pedestrian footbridges

**Fast assembly**  
Ledgers and diagonals can be connected  
to form very stable units  
**For large spans**  
The high bending loading capacity al-  
lows large spans to be realised

**Versatile**  
Flexibly adaptable to suit different  
geometries – as a platform or bridge

# Access



## PERI UP Flex Staircase 75

The lightweight stair tower for flexible access solutions

### Flexible assembly

Through the 250 mm grid dimension, all bays can be completely closed even in the smallest of spaces

### Fast assembly

with only a minimum number of ledgers and anchors

### Easily adapted

for accessing building openings with brackets and small flights of stairs – regardless of storey heights



## PERI UP Flex Staircase 100 / 125

The stairs for high load-bearing and accessibility requirements

### High load-bearing capacity

Designed for loads of 3.00 kN/m<sup>2</sup> for a run of staircase and landing of 20 m

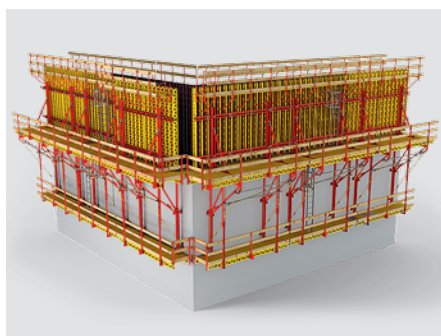
### With conveniently-sized widths

Sufficient space for site personnel to pass each other, transport of materials and stretchering injured persons

### Erection without the use of tools

The stringers are mounted first followed by the steps which interlock during installation without requiring additional components

# Climbing Systems



## CB Climbing Formwork

Crane-movable climbing units – bracket platform with large-sized wall formwork

### Large platform units

with simultaneous high load assumptions through high loading capacity of the brackets

### Time-saving moving procedure

of the securely assembled units consisting of platform and formwork in only one crane lift

### Free of tripping hazards

in front of and behind the formwork as the platform lining is placed over the brackets (valid for CB 240)



## BR Shaft Platform

For shaft platforms when supporting shaft internal formwork

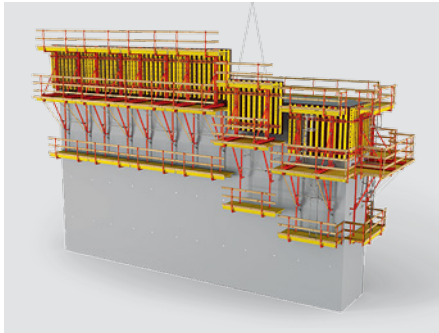
### Project-specific optimized

Customised adaptation of the beam

### Variable support possibilities

Support on folding brackets, anchored with M24 Climbing Anchors; alternatively, on gravity pivot plates in storage boxes (no lost anchor components)

# Climbing Systems



## SCS Climbing System

The solid bracket system for single and two-sided applications

### Large, craneable climbing units

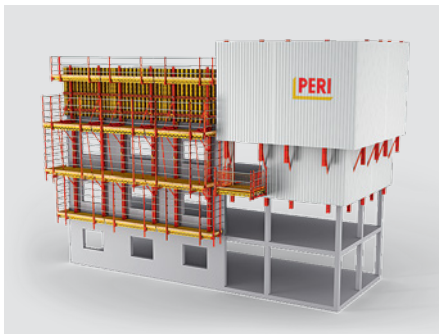
due to the particularly high load-bearing capacity of the brackets with good utilisation of the anchoring

### Material-optimised solution

with the same formwork and components for the starter and subsequent standard cycles

### Safe, horizontal working areas

through inclinable platforms which can easily be adapted to suit inclined structural elements



## RCS Rail Climbing System

The universal modular climbing system for a wide range of applications

### Safe rail-guided procedure

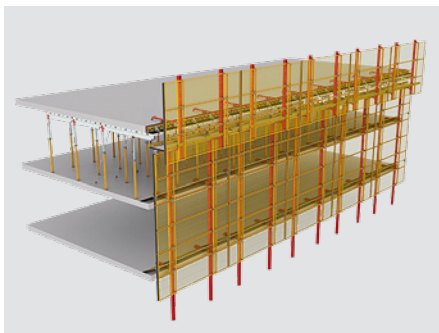
The moving unit is connected at all times to the building by means of climbing shoes.

### Flexible mounting

The climbing shoe can be attached to walls as well as slab edges.

### Variable assembly

Due to the 125 mm hole arrangement of the climbing rails, the platforms can be optimally adapted to suit the respective storey heights



## LPS Lightweight Climbing Screen

The protection system with lightweight mesh elements

### Fast assembly

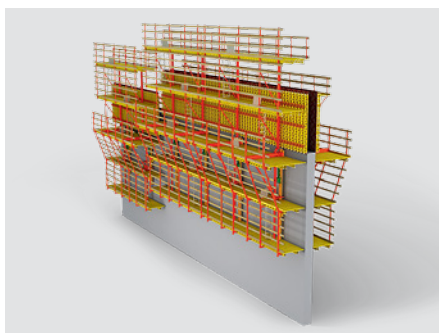
Mesh enclosure assembly without a crane in a very short time; alternatively, can also be delivered pre-assembled

### Lightweight mesh panels

Reduced load on the building due to permeable structure; can therefore also be used for thinner slabs

### Variable use

Can be used as protection panel as well as with supplementary working platforms; mesh panel can also be combined with RCS



## ACS Self-Climbing System

Safely moved upwards with hydraulic drive without a crane

### Crane-independent, quick working operations

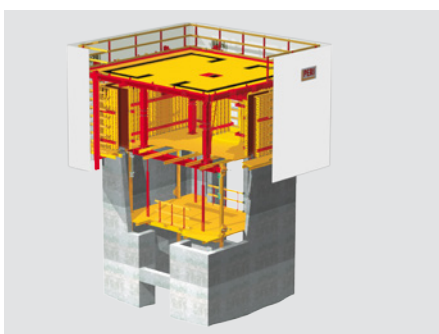
Shuttering, striking and hydraulic climbing in a very fast construction cycle

### Weather-independent working

Comfortably-designed platforms with enclosures protect site personnel against wind and weather

### Stable working platforms

Working platforms can accommodate high loads, e.g. arising from material storage



## ACS.AU 200

Safely hydraulically climbed, independent of a crane

### Crane-independent

Shuttering, striking and hydraulic climbing in a very fast construction cycle

### Safe working environment

Ergonomically designed platforms with perimeter cladding for site safety and protection against wind and weather

### Stable working platforms

Working platforms can accommodate high loads arising from material storage or reinforcement

# Civil Engineering Systems



## **VARIOKIT Engineering Construction Kit**

**Cost-effective civil engineering solutions with the modular construction concept**

### **Countless possibilities**

Bridge, tunnel and civil engineering solutions with core and functional system components

### **Minimised assembly time**

Fast working operations due to fitting pin connections and simple adaptation with spindles

### **Cost-effective solutions**

High degree of efficiency due to rentable system components and statically-optimised planning processes



## **Support structures with VARIOKIT**

**For all geometries and all loads**

### **Load-bearing**

High load-bearing capacities and a wide range of applications

### **Combinable**

Load-optimised solutions with walers, rails and main beams, combined with spindles and struts

### **Complete**

With all technical documents, calculations and assembly drawings



## **Tunnel Formwork with VARIOKIT Engineering Construction Kit**

**Project-specific solutions for tunnel construction**

### **Continuously adaptable**

Gridless, dimensionally-accurate solutions for tunnel cross-sections of any form

### **Workload minimised**

As an option, shuttering and striking, lifting and lowering as well as moving with hydraulic and electrical solutions

### **Save on reworking costs**

High load-bearing steel walers reduce the number of anchors in the wall areas

# System-Independent Components



## **Pallets and Crate Pallets**

**For safe transportation and space-saving storage**

### **Re-usable**

Extremely long service life thanks to top quality workmanship

### **Optimal solutions**

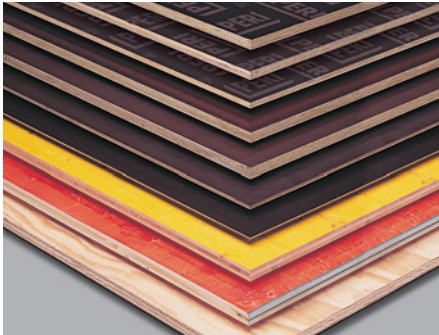
Stacking devices for system components, wire crates for small parts

### **Easy to transport**

Can be stacked to save space, transported using a crane, forklift truck or pallet lifting trolley



# System-Independent Components



## Plywood

The right plywood for all requirements

### A very extensive range

Plywood for simple facing formwork through to coated formlining for the highest architectural concrete requirements

### In all sizes

Available in a range of standard dimensions; special sizes on request

## Services



## Technical Processing

Individual planning and advice from formwork experts, customised solutions from scaffolding specialists

### Optimised solutions

with project-specific formwork and scaffolding planning including site-compliant drawings and parts lists

### We back our products

through continuous project support and technical advice from specialists – if required, also directly on the jobsite

### Planning reliability

through regulation-compliant or verifiable static calculations



## Rental Parks and Distribution

The best material in the right quantity, at the right time, in the right place

### Reduced capital and financing needs

as the customer's own investment for materials and yard are lower or not necessary

### Optimal material availability

through a large, international rental equipment park network which is consistent with state-of-the-art technology

### Uninterrupted construction sequences

due to the flexible reaction times of the PERI rental parks



## Cleaning and Repairs

Professional maintenance operations for high material and execution quality

### Individually coordinated

Definition of the required services according to the state of the materials with the PERI experts

### Professional repair service

Well-trained expert personnel and modern plant technology ensure the best results

### Fast processing

Rapid processing of returns and deliveries thanks to PERI's network of service centres

# Services



## Field Service

**Professional on-site support by supervisors and project managers**

### Professional on-site briefings

through experienced PERI supervisors  
**Increasing the cost-efficiency**  
 by means of individual on-site project management

### Continuous control

through target/actual performance comparisons for the continuous monitoring of material, time and costs

### Transparency and planning reliability

thanks to site-compliant and comprehensible methods of payments



## PERI CAD Software

**The CAD program for professional work preparation**

### Detailed planning

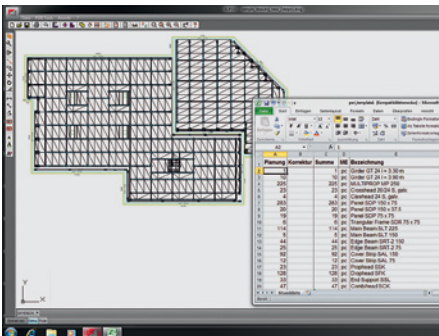
for simple and complex structures

### Clear presentation

with clearly-arranged and detailed plans thanks to the 3D representations and visualisations

### Reduced costs

through the accurate planning of quantities and optimised construction sequences



## PERI ELPOS Software

**The fast and simple software for daily formwork planning**

### Less time required

through automation and an electronic component catalogue

### Optimised material utilisation

through project-related adaption of material requirements to match cycle implementation

### Safe execution

with easy-to-understand plans







**PERI Australia Pty Ltd.**  
**Formwork Scaffolding Engineering**  
116 Glendenning Road  
Glendenning NSW 2761  
Tel. +61 (02) 8805 2300  
Fax +61 (02) 9675 7277  
info@periaus.com.au  
[www.periaus.com.au](http://www.periaus.com.au)

