



SMART SOLUTIONS FOR COMMERCIAL PIPE REPAIRS

NO EXCAVATION OR
DESTRUCTION REQUIRED

WWW.NUFLOW.COM.AU





WHAT SETS US APART?

Nuflow offer versatile and effective relining solutions for commercial pipe systems. With an in-house research and development laboratory and manufacturing facility, we support our clients from assessment to installation.

- Nuflow has the ability to manufacture liners of various composite constructions for any given application.
- We customise epoxy resins to suit high temperature, high wear or acid based environments.
- Our cutting edge in-house laboratory and testing equipment assists with new product development.
- Our in-house chemical and polymer engineer is continuously developing new products and techniques to ensure we provide industry leading services.
- We employ a team of highly skilled staff and deliver a network of unrivaled service technicians throughout Australasia.
- 50-year warranty on all products.



INTRODUCING NUFLOW'S **BLUELINE**



BlueLine is a structural relining product suited to various applications and environments including:

- High temperature and acid pipes.
- Drainage systems – sewerage and storm water.
- High pressure networks.
- Structural pipes.
- High wear and high impact piping systems.
- Trade waste.
- Marine pipes.
- Oil and gas pipelines.
- Pool pipes.

BlueLine is an environmentally friendly pipe relining solution. There is no excavation or destruction required therefore it causes minimal disturbance to the building, staff or occupants.

BlueLine Technology restores structural integrity, prevents joint weakening, has a smooth transition to host pipe and prevents root intrusion and water infiltration. It can be installed on junctions, bends, horizontal or vertical pipes as well as on pipes with multiple bends, elbows, branches and diameter changes in one complete application.

BlueLine allows installers to stop and start at any point within the pipe to give greater flexibility with sectional lining whilst increasing flow.

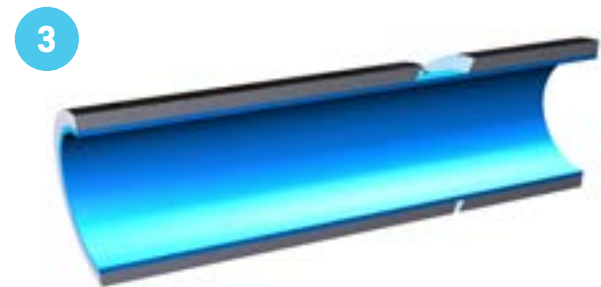
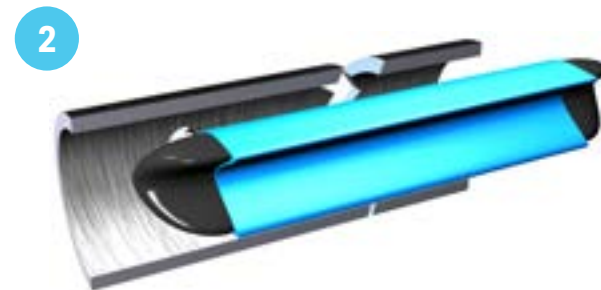


TECHNICAL SPECIFICATIONS

- Watermark Technical Specification WMTS-518:2016 approved.
- ISO9001:2015 Quality Assurance Approved.
- Relines pipes with diameters from 40mm to 1500mm. Although we can custom make solutions for larger diameters.
- Can handle temperatures up to 140°C.
- Can handle many chemicals including caustic soda, sulphuric and nitric acids.

STRUCTURAL LINER PROCESS

1. Camera inspection to locate cause of failures and identify locations.
2. Clean and clear pipes using high-pressure jetting and pneumatic tools.
3. Installation using existing access points and via pull-in-place method.
4. Post camera inspection with video footage supplied.



INTRODUCING NUFLOW'S **REDLINE**



Complete internal coating for pressurised pipe systems.

- Prevents and eliminates, leaks, slab leaks, corrosion, mineral build-up, pin-hole leaks and low water pressure.
- Protects you from lead and other contaminants leaching from your pipe into your water.
- Will tolerate and negotiate multiple 45 and 90-degree bends.
- Testing engineers estimate the life expectancy of the epoxy is roughly 100 years.
- Redline is an environmentally friendly pipe relining solution. There is no excavation or destruction required therefore it causes minimal disruption to the building, staff or occupants.
- The process takes a fraction of the time of traditional re-pipe methods.

COMMON APPLICATIONS

- Hot and cold potable water, grey water systems, compressed air systems, HVAC systems, fire suppression systems, conduit piping, chemical piping, water mains.
- We can repair common types of pipe such as: copper, metal, iron, steel.



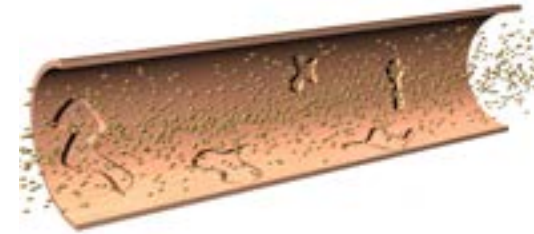
TECHNICAL SPECIFICATIONS

- Watermark Technical Specification WMTS-511:2014 approved.
- ISO9001:2015 Quality Assurance Approved.
- AS/NZ 4020:2005 approved – safe for drinking water.
- Relines pipes with diameters from 12mm to 300mm.
- Withstands the psi rate of the host pipe.
- BS6920-1:2014 approved. Suitable for use in contact with water intended for human consumption.
- Water Regulations Advisory Scheme Ltd (WRAS) – material approved.

EPOXY COATING PROCESS

1. Inspect pipes then clean and prep using pneumatic tools. Entire system is drained and dried using dehumidified compressed air.
2. Apply blown-in epoxy coating using clean air. Optimal internal pipe surface temperature is created prior to epoxy coating.
3. Epoxy barrier cures using controlled air flow. After the epoxy cures, valves and hoses are installed to the fixtures. A final pressure test and flow test is performed to confirm system integrity.

1



2



3



INTRODUCING NUFLOW'S

GREENLINE



Designed to repair pipes under and above surfaces you don't want to destroy, Nuflow's Greenline product structurally repairs any type of potable system with minimal disruption.

- Suitable for Potable Water Pipes including Asbestos Cement (AC), UPVC, Copper, Steel or many other types.
- Minimal access points required and only a small foot print of equipment on-site to conduct repairs.
- Bonds to host pipe. Can start and stop at any location in host pipe.
- Tapping band compatible (including Wang or similar). Compatible with rubber ring push-in DI Tees and Gibault Couplings of most types.
- Tees and house service connections can be re-instated from main service line.
- Connections can be made directly onto the Greenline Structural liner with or without host pipe.
- Various saddles can be secured directly on to structural liner to connect a Ferrule Cock.
- Ability to install over Tee connections and joints.
- Higher crush and burst strength than AC and UPVC pipes.



TECHNICAL SPECIFICATIONS

- ISO9001:2015 Quality Assurance approved
- AS/NZ 4020 :2005 approved – safe for drinking water.
- Structurally repairs high pressure water service mains in diameters from 40mm – 1000mm.
- Withstands long term pressure of up to 1800kpa.
- Designed and installed in accordance with ASTM F1216, AS2566 and ASTM F1743.

INSTALLATION

The specific installation method of our Greenline product enables a mechanical water tight bond between the liner and the host pipe. In select environments where an additional bond between host pipe and liner is beneficial, a safety rubber ring acts as a secondary seal. This provides added security to prevent leakage in the instance of ground movement or host pipe collapse.



Greenline with Saddle attached.



Connection can be made directly onto Greenline structural liner.



Compatible with Gibault Couplings and has the ability to install over tee connections and joints.



OUR SERVICES

Nuflow delivers a first-class service in maintaining and repairing pipe systems for all different business, civil, commercial and property environments. Our efficient and affordable solutions with cutting edge products ensures drainage, trade waste, water pipes and other specialty pipes continue to flow.

WE PROVIDE:



ASSET LIFE CYCLE ASSESSMENTS

We will conduct an audit on your pipe systems which includes CCTV footage, mapping, a full report and recommendations.



PROACTIVE MAINTENANCE PROGRAMS

Annual, bi-annual or quarterly high-pressure cleaning of pipes and conducting any interim repair solutions.



REACTIVE REPAIRS

Includes CCTV inspections, cleaning and clearing blockages, water jetting, pipe relining installations and repairs.



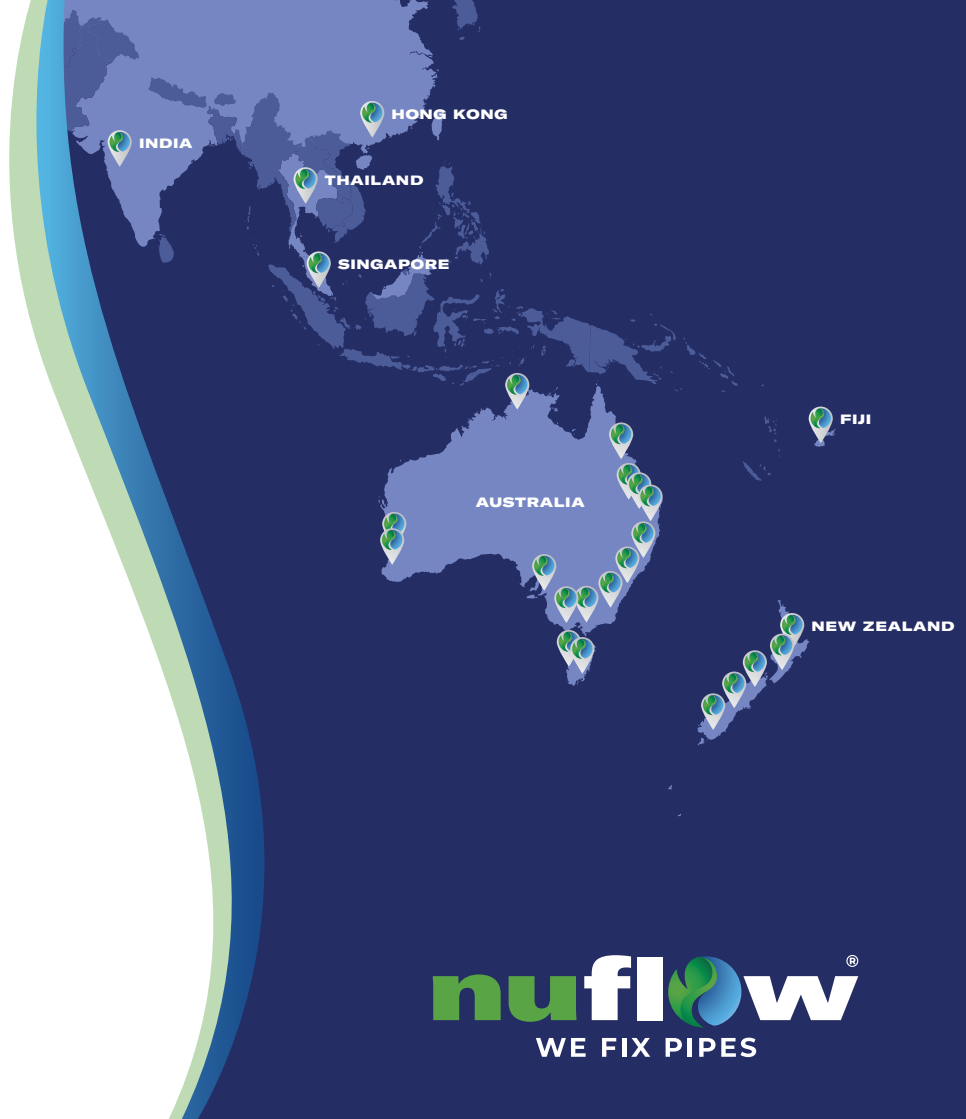
SERVICING THROUGHOUT AUSTRALASIA

**YOUR LOCAL NUFLOW
SERVICE TECHNICIAN IS:**

CONTACT US TODAY

1800 870 207

SOLUTIONS@NUFLOW.NET



nuflow®
WE FIX PIPES