



## The latest in product & technology

Innovating security where you need it most.





# Innovating technologies that change the world

For 130 years, the Bosch name has stood for quality and reliability. Our founder, Robert Bosch, was a visionary entrepreneur who believed that trust and product quality were the key to success. Robert Bosch's iron determination and refusal to compromise are values that we still uphold today. You can see it in our innovative technology and excellent standards of service and support. But most of all, you can feel it when you use our products.

"At **Bosch** we focus on **perfecting innovations** that improve people's lives. That's what we mean by **Invented for life**"



## The **Bosch** Philosophy

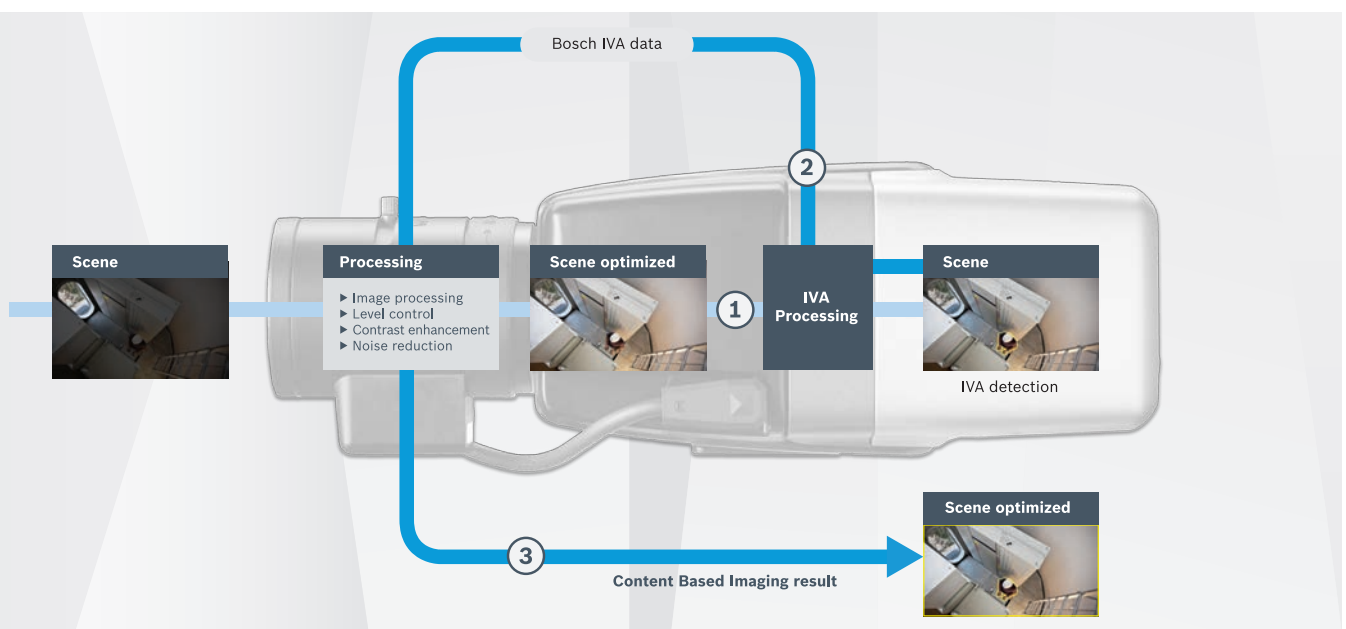
We are constantly searching for ways of safeguarding your world that are simpler to understand, easier to operate and install, incredibly precise and seamlessly connected. Bosch Security Systems provides competitive and innovative products and services of a superior quality that create excellent value to our end users and customers by anticipating their needs and expectations. It's what has earned us our reputation as experts in our field and put us at the forefront of our industry. **Our focus is to always build products to suit your needs.**

## Performance using the **latest technology**

Our key technologies have changed the way you capture, retrieve and record images. Take a look at some of our latest in-camera technologies. Each of these are specifically designed to meet your needs and demands, because our focus is on creating relevant video solutions. Discover how your surveillance situation can benefit from these innovations.

### Content Based Imaging Technology (CBIT)

A first in the security industry, Bosch introduces a new technology for controlling the image processing. All Bosch IP cameras are equipped with our Content Based Imaging Technology (CBIT) to ensure the highest quality of relevant IP images anytime, anywhere. Captured images are tailored to the content of the scene. This ensures intelligent tracking and perfect exposure of objects of interest while keeping bitrate at the lowest level. ***With CBIT, our focus is on satisfying IP video surveillance applications with ever increasing needs for more detail.***

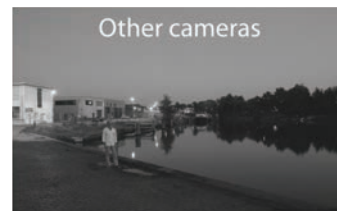
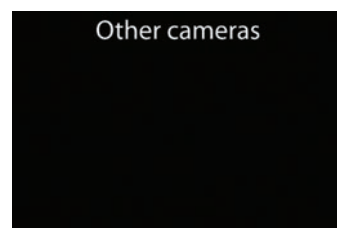
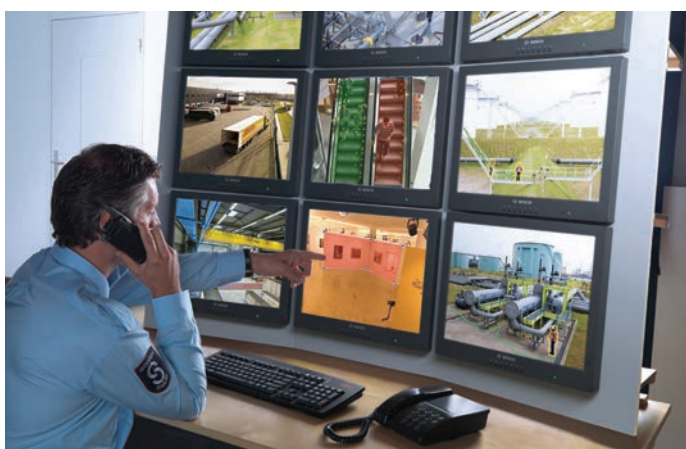


## Essential and Intelligent Video Analytics

After only 20 minutes you can miss 90% of the activity on a screen. Video Analytics assists by alerting you when predefined alarms are triggered. Complex tasks are made easy, false alarms are reduced to a minimum and optimise business processes based on, for example, people counting or direction of traffic flow. All Bosch IP cameras feature built-in essential analytics as standard\*, with intelligent video analytics (IVA) for mission critical applications requiring higher levels of accuracy. **With IVA, our focus is to alert you when needed and help you quickly retrieve the correct data.**

## Starlight. The inventors take it to the next level.

Bosch cameras with starlight technology have become the gold standard in low light video performance. Now we've raised the bar even higher to bring you the latest starlight technology. The original just got better with improved light sensitivity, a wide choice of resolutions, various form factors, dynamic ranges of up to 120dB, frame rates of up to 60 frames per second and video analytics at the edge as a standard. **With starlight technology, our focus is to make darkness totally visible.**



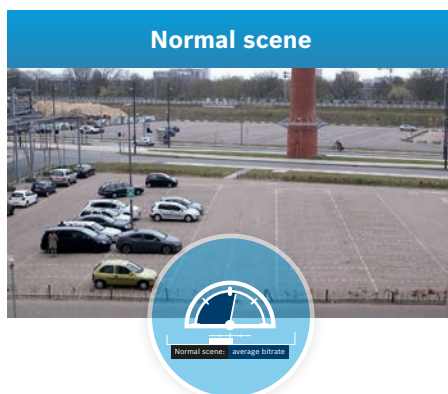
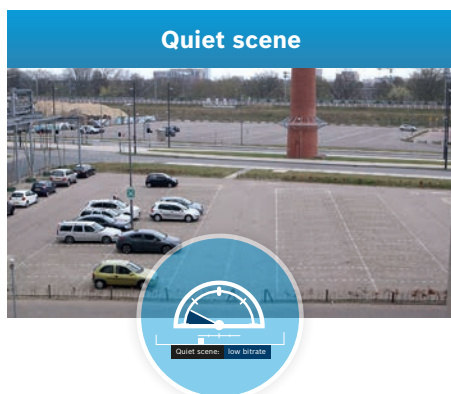
Watch the  
**IVA Movie**



Watch the  
**starlight Movie**

## Intelligent Dynamic Noise Reduction (IDNR)

Quiet scenes with little or no movement require a lower bitrate. By intelligently distinguishing between noise and relevant information, such as movement, Intelligent Dynamic Noise Reduction (**IDNR**) **reduces bitrate by up to 50%.** And because noise is reduced at the source during image capture, the lower bitrate does not compromise video quality. **With IDNR, our focus is to significantly reduce storage costs and lessen network strain by only using bandwidth when needed.**

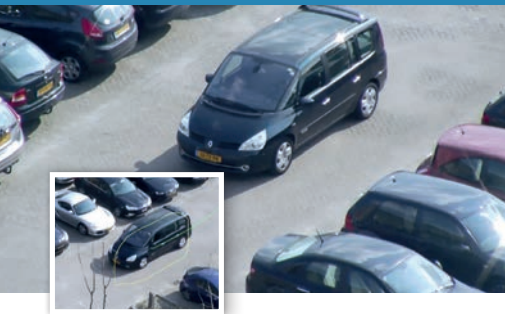


Watch the  
**IDNR Movie**

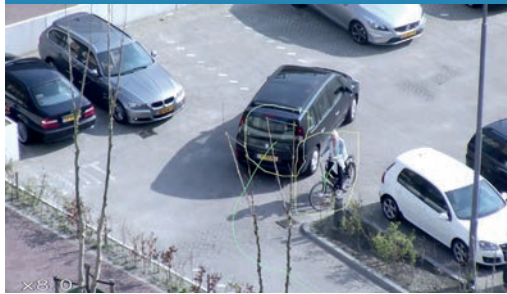
\*Available late 2017



### Intelligent tracking of moving objects



### Distinguishing between single and multiple reference points



### Uninterrupted tracking of objects



#### Intelligent Tracking

In video surveillance, moving objects are usually the most significant objects of interest. Intelligent Tracking automatically tracks moving objects based on predefined alarm rules or a simple click. By intelligently distinguishing between single and multiple reference points, iTracking will provide uninterrupted tracking. Optimal capture of the object of interest is assured by dynamically adjusting the field of view. **With Intelligent Tracking, you never lose track of objects of interest.**



Watch the  
**Intelligent Tracking  
Movie**



#### Dynamic Transcoding

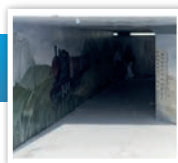
Limited bandwidth makes it impossible to stream HD video on mobile devices. Dynamic Transcoding delivers both smooth live video streaming and instant access to HD images when needed, regardless of available bandwidth.

**With Dynamic Transcoding, you have access to HD images anytime, anywhere.**



Watch the  
**Dynamic Transcoding  
Movie**

### Superb front light compensation



### Incredible backlight compensation



#### Intelligent Auto Exposure (IAE)

Fluctuations in backlight and front light can ruin your images. To achieve the perfect picture in every situation, Intelligent Auto Exposure (IAE) automatically adjusts the exposure of the camera. It offers superb front light compensation and incredible backlight compensation by automatically adapting to changing light conditions.

**With IAE, you get the perfect exposure every time.**



Watch the  
**IAE Movie**

For more details and videos on Bosch's innovative technologies, visit [boschsecurity.com/hdsecurity](https://www.boschsecurity.com/hdsecurity)





#### 4K Ultra HD Technology

The typical surveillance application is challenged by moving objects, variable lighting conditions and bandwidth limitations for transmitting video. That's why we offer a 4K ultra HD solution which takes such limitations into account, covering a large area and identifying objects even at a great distance. 12 megapixel resolution at 30 fps delivers amazing detail even when zoomed-in, and lets you capture fast moving objects in high resolutions. ***With 4K Ultra HD Technology, you can see every detail, everywhere.***

#### Video Recording Manager

VRM enables cameras to stream relevant video data directly to the available storage devices without the use of network servers. This saves costs, server maintenance, and eliminates a possible single point of failure thus increasing reliability. VRM also allows easy expansion of your surveillance system just by adding extra cameras or storage devices to meet your growing needs. ***With VRM, we make large video data volumes easy to manage at lower cost.***

## Reduced Total Cost of Ownership

There is an undeniable cost associated with protecting your assets. When implementing a Video System by Bosch, you're not just fulfilling a requirement to have live and recorded video, you're making a decision to use a high **quality product that is reliable and dependable** through years of research and innovation. Take advantage of Bosch's latest technologies to exceed your expectations of image quality and to aid in optimising your business processes.

**Improved image quality in all conditions** with your video system means a higher rate of identification of suspects. Correct identification can be used as a deterrent to aid in protecting those assets and can be used as evidence. The use of Bosch technologies such as IVA, CBIT, Intelligent Tracking, IDNR as well as other Bosch technologies will provide an advanced suite of smart components to help reduce the total cost of ownership of your system while protecting your assets.

**Reduced false alarms** provides cost savings – sending security guards to investigate an event unnecessarily means they are not being used more productively elsewhere. Hours can be spent by security personnel searching through hours of video footage to find the appropriate event to see what actually happened. The costs associated with responding to false alarms or spending hours reviewing footage are greatly reduced when you choose to implement Bosch cameras using Essential and Intelligent Video Analytics.

**Reduced storage costs** provide further cost savings. Storage account for about 50% of your video system implementation. In combination with Bosch's Video Recording Manager, using Bosch cameras' IDNR, by focusing on relevant information such as movement, data-rates produced by cameras can be reduced by as much as 50%. That's a 25% cost reduction on your overall video system implementation.

All these factors combine seamlessly together to provide you a reduced total cost of ownership of your video system.

# Integration Partner Program

## Video integration without barriers



## Helping you create the best solutions for your customers

A snapshot of what you can expect

### Ease of integration

- ▶ One firmware and one SDK
  - This means one implementation to support an entire product range!
  - Benefit from your initial development time and save resources and money when adding new products and features
- ▶ ONVIF conformance
  - Founding member driving the next generations of interoperability
  - Benefit from effortless and future-proof integration
- ▶ Choice of integration methods
  - ONVIF / RTSP for standard features
  - Dedicated drivers to access unique features
- ▶ Bosch SDK
  - Access cutting-edge features from intelligent video analytics to edge recording and Bosch iSCSI

### A range of products across the video value chain

Select the scope of your integration depending on your needs:

- ▶ Camera and live video
- ▶ Analytic and intelligence
- ▶ Video recording
- ▶ Video management

### Development tools

- ▶ Predefined integration packages using the SDK of your choice
- ▶ Choose your SDK for feature implementation with the SDK Feature Matrix
- ▶ Find and download compatible firmware versions for your Bosch devices
- ▶ View the compatibility between camera/decoder and encoder/decoder



We need compatible video products to create the best solutions for our customers

Integration  
Partner  
Program

At Bosch, we integrate with even more video management software and storage providers



## Integrating the unique products and features from Bosch Security Systems is easy.

Whether you are integrating into your own video management software or storage products or as part of an overall security solution - we are here to support you.

### A comprehensive portfolio for a wide range of customer needs

- ▶ Unrivalled picture quality – low light sensitivity, 24/7 picture usability
- ▶ Intelligent video analytics at the edge – people counting, behaviour detection, forensic search and more
- ▶ Recording at the edge and iSCSI based storage
- ▶ Remote access ready – adaptive bandwidth technology, mobile device ready
- ▶ Application-specific cameras including license plate readers and explosion protected cameras

Key partners include:



milestone

The Open Platform Company



NetApp®



An Infinova Company



A UTC Fire & Security Company



OnSSI



NEW NAS Experience



Watch the  
IPP Movie

# Rethink Video Security

## START TO UTILISE UP TO 100%

We think the next step for video security is to re-purpose the huge amount of data to deliver improved levels of security and utilise the hidden potential of your video security data - by enabling data interpretation directly at the source and re-assign it to help make smarter business decisions. Anything from monitoring presence to reduce utility bills, to identifying patterns in customer activity to improve sales by recognizing 'hot spots' in retail environments. The possibilities and potential within and beyond security are unlimited.

## Full Intelligent Portfolio

Our portfolio goes beyond the highest security demands of today and opens up the exciting world of analytics and use of video data. Video analytics will be offered as standard across our entire portfolio as of the IP 4000 series in 2017. The entire range, from the IP 2000 up to the IP 9000 series, will be completely renewed to deliver:

- ▶ Highest image quality
- ▶ Intelligent bitrate management to reduce bitrate up to 80%
- ▶ Data security

Value

IP 2000



IP 3000



IP 4000



Performance / Features

**Product**

Price / Value Focus

Balance

Motion+

Essential

Available late 2017

**Application**

Price sensitive installations

Generic

Small systems

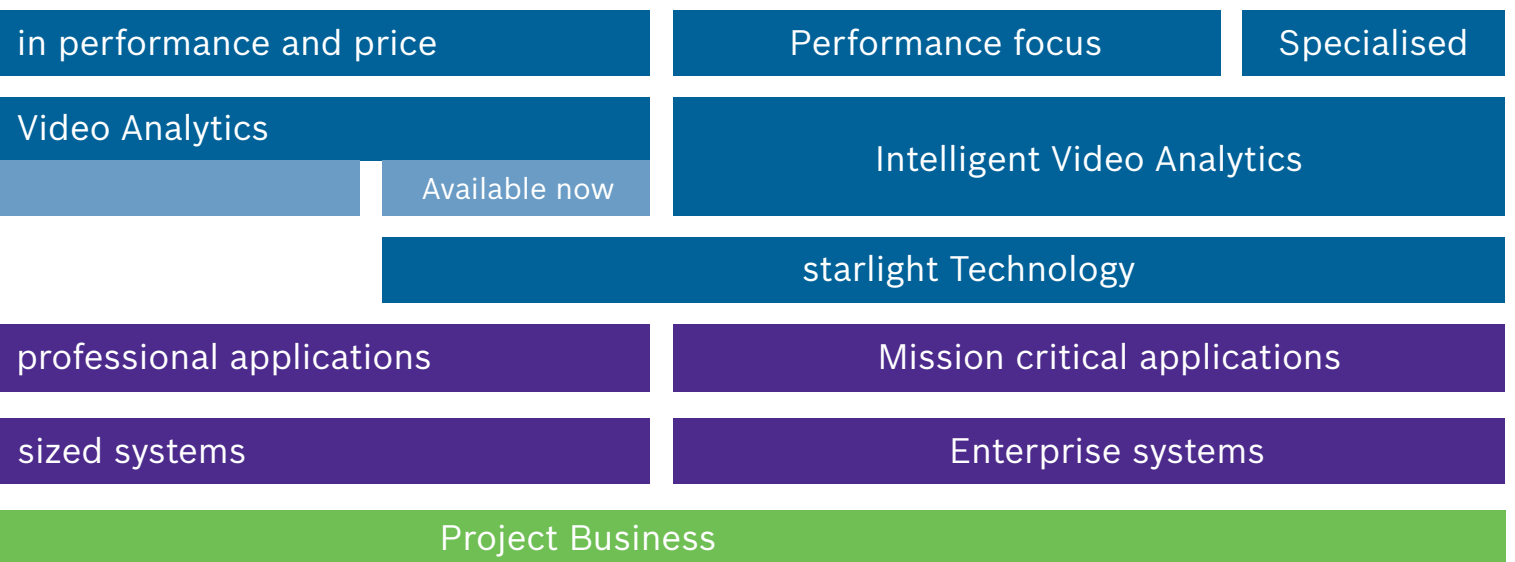
Mid

**Channel**

Distribution business



# Bosch Video Systems IP Portfolio



Rethink  
Video Security

# Products in focus

## Latest releases and current key offerings

### TINYON IP 2000

The 720p and VGA indoor microbox cameras are ready-to-use, complete network video surveillance systems inside a compact and stylish housing. These cameras bring high performance technology into the realm of homes, small office and retail businesses by offering a cost effective solution.

#### Key features:

- ▶ Compact and stylish indoor IP microbox
- ▶ 720p or VGA resolutions at 30 images per second
- ▶ MicroSD card slot for edge recording
- ▶ Motion and audio detection
- ▶ FTP, Dropbox and e-mail applications



### DINION IP bullet 4000 & 5000

The 1080p and 720p infrared bullets provide high quality HD images and are a true day/night camera offering excellent performance. The robust aluminium housing provides high installation flexibility. The cameras resist both water and dust ingress in tough environments and are rated to IP66 standards. The 2.7 to 12mm automatic varifocal lens allows selection of the coverage area remotely.

#### Key features:

- ▶ Automatic Varifocal (AVF) lens for easy installation
- ▶ Built-in IR illuminator with 30m viewing distance in darkness
- ▶ 720p or 1080p resolution for sharp HD images
- ▶ SD card storage support
- ▶ IP66 surface mount box



### FLEXIDOME IP 4000 & 5000 HD

All FLEXIDOME IP 4000 & 5000 cameras feature built-in technologies such as Intelligent Dynamic Noise Reduction (IDNR) and Intelligent Defog. Designed for extremely easy installation and configuration, video data can be safely stored in the cloud, on a network video recorder such as the DIVAR IP 2000 or on the built-in SD card.

#### Key features:

- ▶ Indoor & outdoor IP dome cameras with varifocal lens
- ▶ 1080p or 720p resolution for sharp images
- ▶ Regions of interest and E-PTZ
- ▶ Fully configurable quad streaming
- ▶ IR version with 15m viewing distance





## FLEXIDOME IP micro 5000

These cameras come with a choice of lenses including an ultra-wide angle lens which provides outstanding performance without the need for de-warping software. Available in 1080p and 5MP versions and there is a special version designed for Interior Vehicle Mounting (IVM) using an M12 connector.

### Key features:

- ▶ Compact and stylish outdoor microdome
- ▶ 1080p and 5MP resolutions
- ▶ Regions of interest and E-PTZ
- ▶ Motion and tamper detection
- ▶ FTP, Dropbox and e-mail alarms



## AUTODOME IP 4000 & 5000

AUTODOME IP cameras enable you to locate, track and zoom in on objects quickly and easily, for precise identification and hands-on control. With a choice of resolutions up to 1080p combined with 30x optical zoom, you can identify objects over large distances, giving your surveillance even more reach.

### Key features:

- ▶ Choice of HD resolution (720p25/30 or 1080p25/30)
- ▶ Simple installation with flexible mounting options (in-ceiling or surface mounting)
- ▶ Long distance illumination up to 180m allows easy detection and following of moving target (IR version)
- ▶ Variable illumination ensures that IR light is uniformly distributed in the field to avoid dark spots or over illuminated scene (IR version)



## FLEXIDOME IP panoramic 5000 MP

A discreet, aesthetic, panoramic camera in a compact design. When mounted centrally on a ceiling, the 360° camera lens gives complete wall-to-wall coverage. When mounted on a wall, the dewarped camera image can provide a 180° image.

### Key features:

- ▶ 5MP / 15 fps sensor for fine details with smooth motion
- ▶ Discreet and aesthetic, compact design
- ▶ Simultaneous panoramic overview and detailed object monitoring
- ▶ IK10 rated for better protection
- ▶ Intelligent Dynamic Noise Reduction reduces bandwidth and storage requirements by up to 50%



## DINION IP starlight 6000 & 7000

The cameras are available in 1080p or 720p resolution versions and provide up to 60 images per second. There is a selection of high quality lenses separately available.

### Key features:

- ▶ Excellent low-light performance
- ▶ Built-in Essential Analytics (6000) or Intelligent Video Analytics (7000) to trigger relevant alerts and quickly retrieve data
- ▶ Intelligent Dynamic Noise Reduction reduces bandwidth and storage requirements by up to 50%
- ▶ Extended Dynamic Range mode to see details in bright and dark areas simultaneously
- ▶ Auto back focus for fast installation



## FLEXIDOME IP starlight 6000 & 7000

The cameras are available in 1080p or 720p resolution versions and provide up to 60 images per second. The aesthetic vandal-resistant housing makes the camera suitable for indoor or outdoor installation.

### Key features:

- ▶ Excellent low-light performance
- ▶ Built-in Essential Analytics (6000) or Intelligent Video Analytics (7000) to trigger relevant alerts and quickly retrieve data
- ▶ Intelligent Dynamic Noise Reduction reduces bandwidth and storage requirements by up to 50%
- ▶ Extended Dynamic Range mode to see details in bright and dark areas simultaneously
- ▶ Easy to install with auto zoom/focus SR lens, wizard and pre-configured modes



## FLEXIDOME IP panoramic 7000 MP

This panoramic camera offers a full 180-degree or 360-degree overview in a single image. With its 12 megapixel resolution and fisheye lens, you get a complete overview image without blind spots.

### Key features:

- ▶ 12MP / 30 fps sensor for fine details with smooth motion
- ▶ Edge or client-side dewarping for easy integration
- ▶ Intelligent Video Analytics on full panoramic overview
- ▶ Discreet and aesthetic, low-profile design with in-ceiling flush mount option available
- ▶ Easy twist-click installation





## FLEXIDOME IP 7000 RD

This camera offers motorised autofocus, high resolution, high sensitivity, high frame rates, impressive picture quality, and is bandwidth efficient, significantly reducing video storage costs. Features such as multicasting, internet streaming and iSCSI recording are fully supported.

### Key features:

- ▶ 1/2.7-inch Day/Night CMOS with progressive scan
- ▶ Intelligent noise reduction reduces bandwidth and storage requirements by up to 50%
- ▶ Built-in Intelligent Video Analytics to trigger relevant alerts and quickly retrieve data
- ▶ High-impact, ruggedised enclosure with choice of lens
- ▶ Auto back focus for fast installation
- ▶ Content-based scene analysis optimises the image processing



## MIC IP starlight 7000 HD

Punishing winds, relentless rain, huge temperatures fluctuations, clouds of dust or high-impacts. The MIC IP 7000 HD series combines all our expertise in mechanical engineering and IP video surveillance in a single solid camera design. Built to resist practically everything.

### Key features:

- ▶ Exceptional strength and ruggedness for any outdoor application such as traffic monitoring (bridges, tunnels, or highways), perimeter protection, and city surveillance
- ▶ Starlight (1080p25/30) camera technology with excellent low-light sensitivity (color = 0.0077 lux)
- ▶ Extended Dynamic Range mode (120 dB) to see details in bright and dark areas simultaneously
- ▶ Optional, field-installable combo illuminator (IR/White light) provides detection of objects up to 300 m (984 ft) away



## DINION IP starlight 8000 MP

Capturing images at 5 megapixel resolution even under extreme low-light conditions, it gives amazing images in fine detail. The camera produces multi-megapixel full-colour video in near darkness, and delivers detailed monochrome images where other cameras show no image at all.

### Key features:

- ▶ Remarkable low-light performance (0.0121 lx)
- ▶ 5MP (3K) high detail at fast speeds (30 fps)
- ▶ Built-in Intelligent Video Analytics to trigger relevant alerts and quickly retrieve data
- ▶ Low network strain and storage costs
- ▶ Outstanding wide dynamic range (97+16 dB)



## DINION IP ultra 8000 MP

The DINION IP ultra 8000 MP offers 12 megapixel images at 20 frames per second and 4K ultra HD images at 30 frames per second, to deliver amazing detail even when zoomed in. The camera's ability to give a wide-angle overview and multiple focus points on a single screen helps you focus on details.

### Key features:

- ▶ 12MP (4K UHD) for exceptional detail at fast speeds
- ▶ Built-in Intelligent Video Analytics to trigger relevant alerts and quickly retrieve data
- ▶ Low network strain and storage costs
- ▶ Outstanding wide dynamic range (92+16 dB)
- ▶ Long distance identification with telephoto lenses



## DINION IP Thermal 8000

This thermal IP camera provides high-sensitivity thermal images using an un-cooled vanadium oxide microbolometer that delivers outstanding image quality. The camera is designed to combine the benefits of thermal imaging with the market leading Intelligent Video Analytics from Bosch. There is no need for natural or artificial lighting of the area of interest. The camera produces crisp and clear images day and night, even in challenging environments with smoke, dust, haze or fog.

### Key features:

- ▶ Long detection range (up to 5850m)
- ▶ Integrated Intelligent Video Analytics
- ▶ 640 x 480 resolution version available for even sharper images
- ▶ High access security for data protection



## AVIOTEC IP starlight 8000 Video-based Fire Detection

Bosch VFD sets new standards in visual fire detection by combining reliable smoke and flame detection with outstanding speed. Bosch's best-in-class camera technology and intelligent software algorithms analyse the video footage directly in the camera.

### Key features:

- ▶ Identify smoke and fire long before reaching ceiling or roof sensors
- ▶ Reduce rescue response time, reduce false alarms, and minimise damage on-site
- ▶ 5MP (3K) high detail at fast speeds (30 fps)
- ▶ Built-in Intelligent Video Analytics to trigger relevant alerts and quickly retrieve data
- ▶ Outstanding wide dynamic range (97+16 dB)



# DIVAR hybrid and network recorders

Specifically designed for 24/7 operation with resolutions up to 12MP, they offer the ability to create video surveillance solutions with professional security features that can be tailored to fit the growing needs of a home or small to medium businesses.

## Key features:

### Network recorders

- ▶ Up to 32 IP channels with 320 Mbps incoming bandwidth
- ▶ Up to 12 MP IP camera support for view and playback
- ▶ Real time live display for up to 16 channels @1080p or 4 channels @4k

### Hybrid recorders

- ▶ Standard 16 analogue channels with up to 32 digital channels
- ▶ For analogue video surveillance solutions that need an upgrade path to IP



## DIVAR IP 3000 & 5000

Easy to install and operate, the system features wizard-based set-up and centralised configuration to reduce installation times. All components are pre-installed and pre-licensed. Simply connect to the network and power the unit up – DIVAR IP is ready to begin recording straight out of the box.

## Key features:

- ▶ All-in-one, fully featured video management solution for up to 32 channels
- ▶ Out-of-the-box IP video recording solution with up to 8TB (for 3000) and 16TB (for 5000) storage capacity
- ▶ Robust, secure operation – instant real time access to video
- ▶ Instantly find what you are looking for
- ▶ Remote viewing via Video Security App and Video Client by Bosch



## DIVAR IP 6000

The DIVAR IP 6000 family is an affordable, simple and reliable all-in-one recording management solution for network surveillance systems.

## Key features:

- ▶ RAID-5 protected (standard configuration), all-in-one recording solution for up to 128 channels
- ▶ Pre-installed, pre-configured IP storage solution with up to 32TB (2U) or 64TB (3U) storage capacity
- ▶ Dedicated storage operating system delivers robust, secure operation
- ▶ Hot-swappable hard drives
- ▶ Remote monitoring via desktop application, browser or SNMP





## DIVAR IP 7000

The DIVAR IP 7000 family is an affordable, simple and reliable all-in-one recording, viewing and management solution for network surveillance systems of up to 128 channels (with 32 channels pre-licensed).

### Key features:

- ▶ RAID-5 protected (standard configuration), all-in-one, fully featured video management solution for up to 128 channels
- ▶ Out-of-the-box IP video management solution with up to 32TB (2U) and 64TB (3U) storage capacity
- ▶ Robust, secure operation – instant real time access to video
- ▶ Instantly find what you are looking for
- ▶ Advanced user and alarm management



## VIDEOJET decoder 8000

VJD-8000 displays video from Standard definition (SD), High Definition (HD), 4K Ultra High Definition (UHD), and Megapixel (MP) cameras and encoders using H.264 or MPEG-4 encoding at up to 60 frames per second over IP networks. It can flawlessly decode two 4Kp30 streams at 20 Mbps, or six 1080p30 streams, or eight H.264 720p60 streams, or twelve H.264 20p30 streams, all at 10 Mbps.

### Key features:

- ▶ HD, 4K UHD and MP decoding
- ▶ Flexible monitor layouts
- ▶ Directly drives up to two 4K UHD monitors
- ▶ Displays VCA metadata
- ▶ Compact size and VESA mount

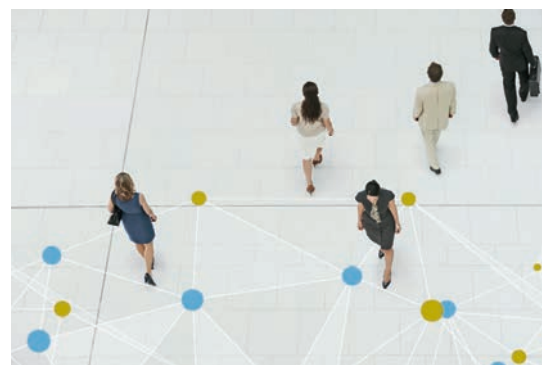


## Bosch Video Management System 7.0

The Bosch VMS is a unique enterprise IP video security solution that provides seamless management of digital video, audio, and data across any IP network. It provides the best VMS to go with Bosch CCTV devices, leveraging the unique capabilities of Bosch cameras and recording solutions.

### Key features:

- ▶ Maximum resilience to ensure continuous operation
- ▶ Up to 2000 cameras with a single recording server mean high savings
- ▶ Smart automatic stream switching for live viewing
- ▶ Best integration with Bosch video hardware
- ▶ Encrypted communication to cameras



# Keeping your **video data safe**

Video surveillance data is increasingly connected across local and global networks. A growing number of edge components (cameras) send their data to core components (servers) over the Internet, where digital intruders and hackers loom. Because video data is often highly critical and sensitive, Bosch is driving a systematic approach to maximise data security by considering physical safety and cybersecurity simultaneously. Bosch's system approach is the key to achieving the highest standards in end-to-end data security.



We achieve the highest standards with a four-step approach that considers the entire video surveillance infrastructure. We create trust by assigning every component in the network an authentication key. We secure data from hackers by encrypting it at the hardware level, using a cryptographic key that is safely stored in a **unique built-in Trusted Platform Module (TPM)**. We offer easy ways to manage user access rights ensuring that only authorised people have access to your data. And finally, we can support the set-up of a Public Key Infrastructure. So with Bosch, you couldn't be more secure.

## Bosch covers all major elements of the video surveillance infrastructure:



### How we secure our cameras

- ▶ Request for password at initial set up
- ▶ Execution of 3rd party software "disabled"
- ▶ Firmware updates via manufacturer signed files only
- ▶ Cryptographic operations are only executed inside the **unique built-in Trusted Platform Module (TPM)**



### How we secure our core devices

- ▶ Cryptographic operations are only executed inside the **unique built-in Trusted Platform Module (TPM)**
- ▶ Support of Microsoft Active Directory for safe management of user access right
- ▶ Digest access authentication only
- ▶ Regular updates via security patches



### How we secure network communication

- ▶ "Unsecure" ports disabled by default
- ▶ Password assignment suggestion on set up
- ▶ Network authentication using the 802.1x protocol
- ▶ Supports up to 256 bit keys for encryption (Advanced Encryption Standard)



### How we support Public Key Infrastructures (PKI)

- ▶ Factory-loaded unique Bosch signed certificates on all cameras
- ▶ **Unique built-in Trusted Platform Module (TPM)** for highly secure cryptographic operations
- ▶ In-house Certificate Authority (Escrypt)
- ▶ Supports customer specific certificates
- ▶ Supports 3rd party PKI solutions



Watch the  
**Data Security  
Movie**

# Grow with **Cloud-based Services** from Bosch

Industry analysts agree that video monitoring will grow at a rate far above the traditional monitoring services. Cloud-based Services brings state of the art video monitoring to your central monitoring station while greatly reducing the risks associated with new technology deployment.

## Ready to sell services

Choose from our growing list of ready-to-sell video services for security and business optimisation to design service packages for your dealers and customers.

### Prevent vandalism and theft



#### Video Verification

Enables the operator to verify the source of a burglar alarm and choose appropriate escalation path.



#### 24/7 Live Intervention

Enables the operator to gain fast situational awareness of pre-filtered video alarms and perform immediate audio intervention to prevent damage onsite.

### Ensure employee safety



#### Virtual Assistant

Enables the operator to provide immediate remote assistance at the push of an emergency button to a person in distress.



#### Virtual Escort

Enables the operator to remotely accompany persons through high risk tasks and ensure their safety.

### Support your customer's business



#### Virtual Guard Tours

Enables the operator to efficiently perform remote checks of all key areas at the customer's premises.



#### Customer Traffic Report

Provides the customer with business intelligence on visitor traffic supporting store performance evaluation.



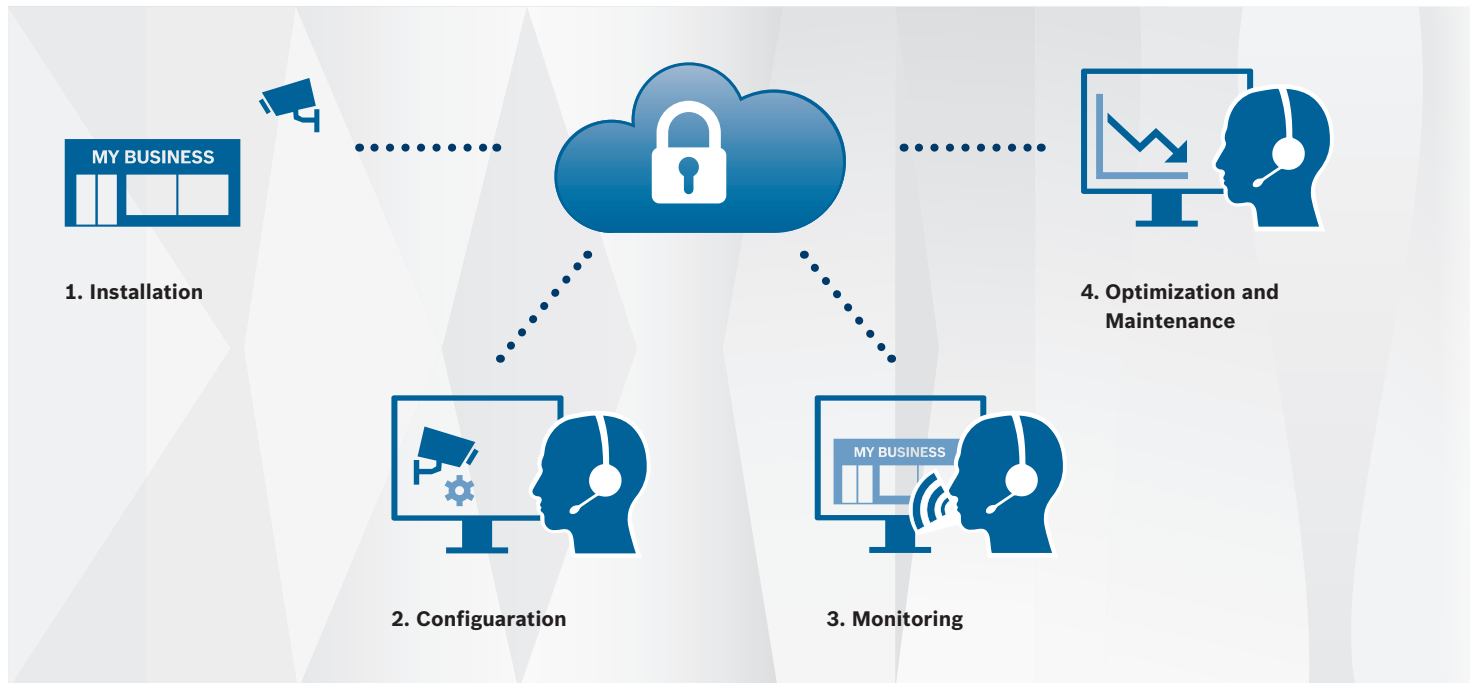
#### Site Monitor App

Helps the customers keep an eye on their business with remote mobile access and notifications of critical business operations.



## Seamless integration and efficient operations

Cloud-based Services is tightly integrated with all prominent alarm management platforms allowing you to deploy the new video monitoring services from your established environment. From installation through operation and maintenance we provide tools to make video monitoring efficient and effective.



### 1. Reduced installation effort

Bosch IP cameras easily connect to Bosch Security Cloud; no VPN or router settings needed.

### 2. Remote service configuration

Bosch IP cameras, video analytics and surveillance services can be configured remotely.

### 3. Efficient service operation

Filters at multiple levels significantly reduce the alarm rate and allow operators to concentrate on real incidents. Operator interfaces adapt to specific service tasks enabling their efficient operation.

### 4. Optimisation and maintenance

The diagnosis module provides statistics on the overall system so you can optimise the performance of the connected sites and devices over time.

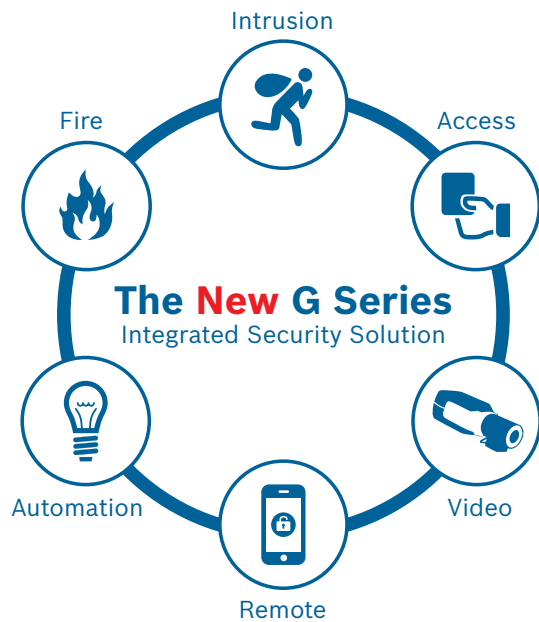


Learn more about  
**Cloud services**

Start now!

The delivery of our solution as software-as-a service enables you to take advantage of the rapidly growing video monitoring market while greatly reducing the risks associated with new technology deployments. You automatically gain access to enhancements and new features as we continually improve and add new services. You pay as you go, there are no start-up fees or monthly minimum charges.

# G Series — Integrated Security Solution



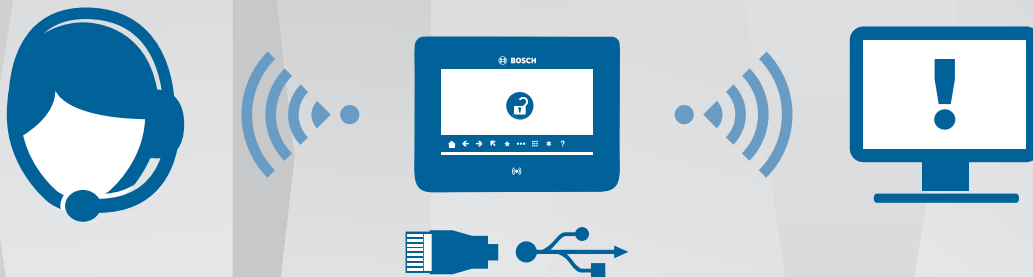
## Greater protection

G Series Control Panels are designed for intrusion detection, offer integrated access control and IP video control, and are compatible with Z-Wave automation devices. With Bosch, you get complete security with only one system to learn, use and maintain.

## Greater capacity

The G Series provides up to 32 doors of access control, 599 inputs of burglary and smoke detection and 2,000 users, all in a single control panel. Lower your cost of ownership with one system and one installation.

Compatibility with our existing peripherals allows you to easily and cost-effectively upgrade your current system for greater capacity, enhanced features and more modern technology.



## Greater technology

Use your Ethernet or mobile data network with your G Series Control Panel to send alarm transmissions to the central monitoring station - eliminating the need for a phone line, reducing costs and increasing security.

With G Series, you are prepared for the future. The panels support both current and future Internet Protocols - IPv4 and IPv6 - to protect your investment as technology changes. Multiple interfaces allow Ethernet and USB connections, and simple, dual plug-in communication modules enable easy adoption of new technologies.

Remote firmware updates ensure easy maintenance or feature enhancements. Remote programming with

advanced diagnostic capabilities makes maintenance more convenient and allows technicians to service your system or modify certain functions without disrupting operations at your facility.

## Greater customisation

With custom functions, a single action or presentation of access credentials can initiate multiple functions. This means easy arming and disarming for overtime work, holidays, meetings after hours, and more.

Scheduled events also ensure the system is armed or disarmed at pre-determined times, or that other functions are performed based on the system's internal clock and calendar.



With our Remote Security Control app, you can also operate your system from an iOS or Android device. Arm or disarm the system, check status and control monitored points or doors using a smart phone or tablet. You can even view live video or still images from Bosch IP cameras integrated with the panel.

### Greater awareness

To stay up to date, event notifications can be sent directly to an email or mobile phone.

G Series panels can directly control up to 16 Bosch cameras via the IP network, and support up to 8 video analytics channels per camera. This augments the panel's capabilities with intelligent video analytics functions such as motion detection, line crossing, and idle object. In addition, panel events can trigger

camera actions such as moving camera pre-sets or recording settings, and initiate the transmission of video snapshots via email.

The G Series can also be integrated with the Bosch Video Management System (BVMS), providing up to 20 panel connections per BVMS server. Panel status and events can be displayed on a graphical map. The panel can trigger BVMS events and be armed or disarmed through BVMS.

### Unique features only from Bosch bring you an added layer of security:



**Area Re-Arm** ensures critical areas, such as an ATM service room or pharmacy storage area, are only disarmed for short periods and automatically re-arm after a pre-determined time.



**Monitor Delay** checks doors and other points in the system even when disarmed. The control panel provides notification and reports of specified conditions, such as an emergency exit propped open or loading dock door left ajar. This helps mitigate risk and help control HVAC costs.

### Greater control

Operate the system from an iOS or Android device with the Remote Security Control app. Arm or disarm individual areas, check system status and control monitored points or doors using the Internet or through your local wireless network. View live video from Bosch IP cameras integrated with the panel.

### Greater efficiency

Compatibility with many of our existing peripherals allows you to easily upgrade existing Bosch systems for greater capacity, enhanced features and modern technology.

On-board USB enables easy on-site RPS programming. Plug-in PSTN and Cellular communication modules allow for simple installation and future-proof upgrades.





# Solution 6000

## Your business security solution

You have a responsibility to your staff and your business to protect them. Should a burglary or other incident occur, the loss is not just the items destroyed or stolen – it's the loss of comfort and security that your workplace once provided. The Solution 6000 from Bosch Security Systems provides you with an expandable solution that can be tailored to fit your business perfectly. This integrated access control and alarm system combines an impressive array of alarm functionality with the access control capabilities you've always needed.



**Simple** to use,  
with plenty of  
**flexibility**

### Expandable to suit your business needs

Every business is different, and the Solution 6000 can adapt to any requirements. It is capable of providing simple cost effective solutions for mid-sized businesses, yet is powerful enough to handle 144 zones (detection devices), and even up to 16 access doors when fully expanded for large applications. Catering for up to 256 users, it provides a perfect fit for most business users. With programmable authority levels, you determine which functions each staff member can perform: simple operations such as turning the system on and off, or accessing restricted areas. Customised security has never been so simple.

### Simple Operation

The standard Bosch keypad features a graphical user interface (with optional WIFI) that incorporates a text-driven menu system. Colour coded, illuminated keys make it easy to operate your security system, day or night. An enhanced version of the Graphic Keypad incorporates a built-in proximity reader, allowing users to simply present

their token to the keypad to arm/disarm and or unlock a door in one simple action. Where required for external applications, like warehouse entry or main entrances, stainless steel weatherproof keypads are also available in slimline or standard fit.

### Integrated Access Control

Access Control is no longer reserved only for larger more expensive systems. The Solution 6000 incorporates proximity technology from Bosch, providing an affordable and effective solution for integrated access control for up to 16 access doors or proximity readers - ideal for mid-sized commercial installations.

Bosch provides you with a choice of access control user interfaces including internal or weatherproof external proximity readers, keypads with built-in proximity readers or WiFi, or for a higher security option, biometric fingerprint readers.

*If a user is enabled for door access, presenting a token or access card to an internal or external proximity reader will provide entry, which can be monitored and reported by the system.*



### Access Control Features

Comprehensive access control features including Holidays, Date / Time and Day of the Week Schedules allow you to easily manage your employee access and the arm/disarm functions of the security system. Up to 16 time zones can be set up, with each containing up to 4 time periods. Time zones can be used to automatically arm/disarm your security system at specific times, like automatically locking a reception door at 5pm, as well as controlling user access to doors such as the warehouse after 4pm, or to automatically control outputs, like gates that close automatically at 5.30pm.

### Multiple Arming Options

The versatility of the Solution 6000 is captured in its ability to provide the right arming option for any business. Up to 256 individual system users have the choice of arming and disarming using a unique PIN code (up to 8 digits long), a wireless remote, proximity card or token, biometric fingerprint or by using the Auto Arm function.

### Flexibility

Solution 6000 can be programmed to manage 144 zones that can be divided into 8 separately controlled areas. The 144 fully programmable intrusion zones can support sensors fitted to doors and windows, motion sensors and smoke detectors. When events are detected, the Solution 6000 can sound sirens, transmit events to your monitoring service provider and activate lights, providing security you can rely on 24 hours a day.

Your Solution 6000 can store up to 1000 events ie. arm/disarm functions and door access reports for each user, which can be viewed from the keypad by the master user. This way you can monitor the movements of your staff daily if required. With 5 on-board outputs (expandable to 37), and one already preprogrammed for a roller shutter or garage door, your Solution 6000 can cater for all your building automation requirements, including lighting & air conditioning - just about anything that is controlled via a switch and can be programmed.

### Site Manager

Site Manager is a software platform for the Bosch Solution 6000 intrusion panel that gives end-users the ability to easily administrate the day-to-day operations of their system. The software allows a security manager to control multiple panels in different locations by way of conventional IP networks, giving them access to user lists, access control, timezones, and system and user activity logs.

The Interactive mode of Site Manager allows the end-user to remotely control features of the panel such as outputs, doors, and includes a live log of access and other events. When used with the optional CM436B Desktop Prox Card/Token Reader, Site Manager allows the end-user to learn in access cards and token at the administration PC, without having to go out to a field device.

With the software suite featuring fully integrated reporting system, Site Manager places a new level of control, administration, and understanding in the hands of the end-user.



# Solution 2000 & 3000

## Home security you can rely on

You've worked hard for the things that you own. Your home is your sanctuary. If an intruder breaks into your home, the loss you feel is not just about the items destroyed or stolen - they can be easily replaced. What you lose is the peace of mind and that sense of security that your home once provided. The Solution 2000 & 3000 alarm panel series from Bosch Security Systems offers you the perfect solution. We've created a security system that has all the technology it needs to identify intruders to your home, without being hard to use. It helps you protect the things you love, providing you with reliable home security at your fingertips.



**Simple** to use,  
with plenty of **flexibility**

### Tomorrow's communications, available today.

With large-scale broadband communications already a reality in Australia and New Zealand, and the installation of services such as the National Broadband Network, knowing how your intrusion panel is going to handle and report alarms is becoming increasingly important.

While offering the same telephone line capabilities as existing intrusion panels, the Solution 2000 & 3000 also have available a range of communications extension modules that integrate directly with the panel and provide options such as mobile communications via the GSM & GPRS networks, along with IP reporting through the Internet.

The IP connection option makes the panel fully NBN ready with the majority of monitoring centres in Australia & New Zealand able to handle the IP communications from the Solution 2000 & 3000. Enjoy the higher security of polled monitoring with no call costs.

### It's your home... the alarm should work your way.

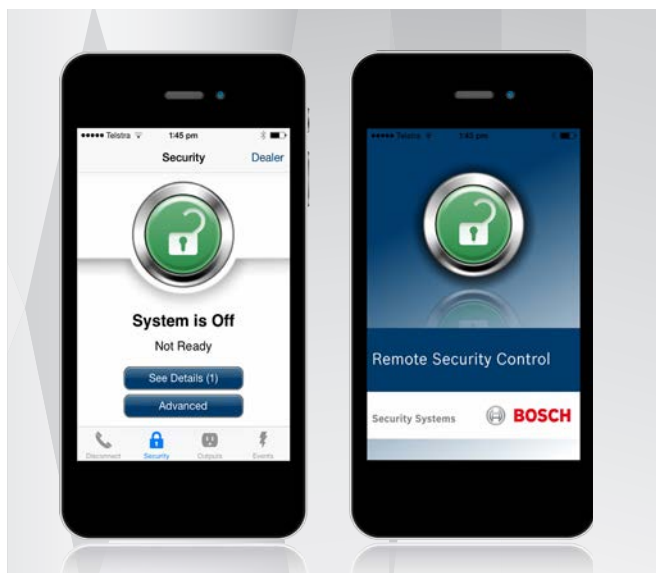
The Solution 2000 & 3000 intrusion panels have a variety of codepad options that allow you to tailor the user experience to your style and your home.

The LCD Icon codepad offers a small and unobtrusive interface to complement the decor of any home. The simple Icons make it easy to identify the status of your system at all times.

The LCD Alphanumeric codepad displays information in real text allowing you to quickly identify the cause of any alarm, and even to control multiple household areas simultaneously (such as separating the main house and an external garage or shed).

The Touchscreen codepads allow you to turn your intrusion panel in to a true lifestyle product with a variety of simple to use and aesthetically pleasing options and additional features.





## Home security... at your fingertips.

Away from home and want to make sure you armed the alarm? Want to open the garage door but the kids have hidden the remote? Just load up the Bosch Remote Security Control<sup>1</sup> app and you'll have full control of your intrusion panel through your AndroidOS or IOS smartphone.

Arm and disarm your system, trigger outputs to run external devices (such as roller doors, air conditioning units, or smart lighting systems), or simply check what time the kids left in the morning for school – all of these features and more are built in to the intuitive and quick Bosch RSC app.

## Ready for the wireless world.

Enjoy easy control of your Solution 2000 intrusion panel with the including of wireless keyfobs that allow you to arm & disarm your system, control external outputs and even trigger a panic alarm if you are unable to reach the panel's codepad.

Alternatively, experience the true power of wireless with the Solution 3000 which includes the option to integrate with the Bosch RADION range of wireless transmitters. With a growing suite of wireless products such as motion sensors, door & window reed switches, and remote keyfobs, Bosch RADION will create new options for how you manage your home security.



*Choose the way you want to use your system, including Touch Screens & wireless remote control options.*

## Flexibility, agility, and piece of mind.

Supporting up to 8 fully programmable zones on the Solution 2000 and 16 fully programmable zones on the Solution 3000, this range of intrusion panels is suitable for any home, and even some commercial premises.

With support for up to four codepads on both panels and the ability to be split in to two separate partitions on the Solution 3000, you have the flexibility of one security system that can act as two. Both the house and garage/granny flat can be covered by the one system at one cost. Each partition can even report to a different monitoring centre if desired – the perfect arrangement for shared premises such as duplex houses or commercial properties.

## Features

- ▶ 8/16 Fully Programmable Zones
- ▶ 41 codes - 1 Installer, 20 User Codes (up to 32 on Solution 3000), 20 RF Keyfobs (up to 21 on Solution 2000 and 32 on Solution 3000)
- ▶ 16 Wireless Devices (on Solution 3000)
- ▶ Partitionable in to 2 Separate Areas
- ▶ STAY / AWAY Arming Options
- ▶ Selectable Reports per User Code
- ▶ Entry and Exit Warning
- ▶ Automatic Arming
- ▶ Remote Arming
- ▶ Zone Lockout
- ▶ 256 Event History Memory
- ▶ LCD Icon, LCD Alphanumeric, and
- ▶ Touchscreen Support
- ▶ 4 Programmable Outputs
- ▶ Dynamic Battery Test
- ▶ Day Alarm
- ▶ Walk Test Mode
- ▶ Back to Base Reporting
- ▶ Domestic Reporting
- ▶ Dual Entry Timers
- ▶ AC Fail Supervision
- ▶ Phone Line Supervision

<sup>1</sup>Bosch RSC app requires that the panel include a communications extension module.

# Intrusion **Panel Comparison**

Manufacturer	Bosch	Bosch	Bosch	Bosch
Product	Solution 2000	Solution 3000	Solution 6000	G Series B9512G
Max Inputs	8	16	144	599
Max Outputs	20	20	37	599
Wireless Expansion	No	Yes	Yes	Yes
Max Doors	None	None	16	32
Max Users	32	32	256	2,000
Max Keypads	4	4	16	32
Partitions	2	2	8	32
Event Log	256	256	1,000	10,192
PSTN	Onboard	Onboard	Onboard	Module
IP	Module	Module	Module	Onboard
3G GPRS	Module	Module	Module	Module
Field Intelligence	No	No	No	Yes
Enterprise Expansion	No	No	No	Yes

## Automation **Controller App & Devices**

Introducing a new range of Z-Wave home automation components available now from Bosch Security Systems. Using the VeraEdge Home Controller, it is possible to control over 220 devices including Z-Wave lights, locks, climate control and energy monitoring devices. Additionally, the VeraEdge can already interface with and control the Bosch G Series Integrated Intrusion & Access panel, and will shortly be able to do the same with the Bosch Solution 2000 & 3000 Intrusion panels.

All of the interconnected devices can be controlled through an easy-to-configure web interface, or via a smartphone or tablet using the Vera app for IOS and AndroidOS. Users can create “Scenes” which allow detections on various devices such as the alarm panel or thermostat to trigger actions on other devices, or to notify users via Push, SMS or Email. All of these features are available with no monthly fee.



### **Z-Wave Devices include:**

- ▶ Z-Wave Plug-in Switch
- ▶ Z-Wave In-Wall Dimmer Controller
- ▶ Z-Wave In-Wall Single / Double Switch Controller
- ▶ Z-Wave Deadbolt Keypad Lock
- ▶ Z-Wave Wireless Digital Deadbolt
- ▶ Z-Wave A/C Controller
- ▶ Z-Wave Thermostat

# Motion Detectors made by Bosch

**Award winning** Bosch Motion Detectors: versatile, easy-to-install units that virtually eliminate false alarms, while improving catch performance. They're the smartest detectors in the world.

## Professional Series

These detectors integrate and process data from up to 5 different sensors to make intelligent alarm decisions. This exclusive Sensor Data Fusion technology results in the most accurate alarm decisions ever.



### Available in:

- ▶ PIR 15 x 21m
- ▶ PIR Anti-mask 15 x 21m
- ▶ TriTech 18 x 25m
- ▶ TriTech Anti-mask 18 x 25m
- ▶ Trittech Curtain 30 x 3m

## Commercial Series Detectors

These mid-range sensors designed to meet the needs of higher security applications while providing a lower total cost. They are designed to ensure reliable catch performance and false alarm immunity in commercial applications.



### Available in:

- ▶ TriTech 15m
- ▶ TriTech Anti-mask 15m

## Blue Line Gen 2

BLG2 deliver easy installation, excellent catch performance and false alarm immunity. Ideal for homes and small businesses.



### Available in:

- ▶ PIR 12 x 12m
- ▶ Pet Friendly PIR 12 x 12m
- ▶ Quad 12 x 12m
- ▶ TriTech 12 x 12m
- ▶ Pet Friendly Trittech 12 x 12m

## RADION Wireless

RADION wireless devices are your choice when running a wire is not possible or cost effective. RADION operates within the 433 MHz band.



### Available in:

- ▶ Wireless PIR, Curtain & Trittech
- ▶ Keyfobs & panic buttons
- ▶ Universal transmitters & door/window contacts

## Unparalleled Bosch technologies improve catch performance and reduce false alarms

	Traditional Motion Detectors	Bosch Innovation	Benefit of proprietary Bosch Technology
<b>Alarm Decisions</b>	Have only 1 or 2 internal sensors; signals are processed independently and are less accurate.	<b>Sensor Data Fusion</b>	Only Bosch balances and adjusts sensitivities of up to 5 internal sensors and fuses the data to make the world's most intelligent alarm decisions. This results in a 35% improvement in catch performance, while virtually eliminating false alarms.
<b>False Alarm Immunity</b>	Use filters and films to degrade the same light signals used for alarm decisions, reducing catch performance.	<b>Active White Light Suppression</b>	Only Bosch eliminates false alarms due to white light such as car headlights. By incorporating a white light sensor we are able to exclude such traditional false alarm sources.
<b>Application Range</b>	Have only 1 or 2 lenses or mirrors and use long-range sensors for short-range detection, making them prone to false alarms.	<b>Tri-Focus Optics</b>	Only Bosch uses three separate sets of optics and two dedicated detectors for long, mid and short range coverage. This means that intruders stand out more clearly from the background and are more easily and accurately caught.  The simple dipswitch allows installers to adjust PIR coverage range from 50 to 25 feet (15m to 8m), making each detector extremely versatile to reduce inventory.
<b>Small Animal Immunity</b>	Do not measure distance to target; unable to distinguish between a small target up close and a larger target at a distance, leading to false alarms.	<b>Tri-Focus Optics</b>	Only Bosch measures range to target and can distinguish from a fly at 1 foot and a person at 50 feet, reducing false alarms from small animals and insects.
<b>Consistent Coverage</b>	Require lens and mirror adjustment when detector height is changed, leaving room for human error and inconsistent coverage.	<b>Tri-Focus Optics</b>	Only Bosch provides consistent coverage across entire coverage area, even when height is changed. No lens adjustment required.
<b>Antimask</b>	Use simple active infrared antimask technologies.	<b>Multi-point Antimask Technology</b>	Only Bosch employs multi-point antimask technology with integrated spray detection that utilises patented prism lenses and active infrared detection to provide industry-leading resistance to all known forms of attack. This technology complies with all of the latest international regulatory standards.



**Bosch Security Systems Pty Ltd**  
For more information please visit  
[www.boschsecurity.com.au](http://www.boschsecurity.com.au)

© Bosch Security Systems 2017  
Modifications Reserved  
Printed in Australia 05|17