



## SUMMER ACTIVITY GUIDE

---

FAIRMONT CHATEAU WHISTLER





IMAGE: TOURISM WHISTLER, MIKE CRANE



## CONNECTING YOU TO THE BEST OF WHISTLER

Thank you for choosing Fairmont Chateau Whistler; we look forward to welcoming you to our landmark Whistler resort!

Our concierge teams are committed to assisting in making your stay with us as memorable as possible. Whether you are looking for a romantic getaway or an adventure packed holiday, you'll find it in beautiful Whistler, BC.

Please note that schedules and prices are subject to change without notice. Advance reservations are recommended for all transportation bookings, dining and social activities listed. Should you have any questions or require reservations, please do not hesitate to contact the Concierge at any time.

Warm regards,  
The Lobby and Fairmont Gold Concierge Teams at Fairmont Chateau Whistler

### CONCIERGE TEAM

T 604 938 2006

CWR.concierge@fairmont.com

### FAIRMONT GOLD CONCIERGE TEAM

T 604 938 2072

CWR.fairmontgold@fairmont.com

*Fairmont*  
CHATEAU WHISTLER





# TABLE OF CONTENTS

---

TRANSPORTATION	5
DINING	8
RESORT ACTIVITIES	15
GOLF	20
POOLS & CABANAS	22
SPA	24
WHISTLER EXPERIENCE GUIDE	25
HIKING	26
BIKING	27
WATERSPORTS	28
CULTURE	29
KIDS	30
SHOPPING	31
PETS	32
CONTACT	33

JOFFRE LAKE, NEAR WHISTLER





## WHISTLER: A SUMMER PLAYGROUND

With biking, hiking and glacier-fed lakes plus a vibrant arts and culture scene, Whistler is truly the ultimate summer destination.



IMAGE: TOURISM WHISTLER, MIRAE CAMPBELL





# TRANSPORTATION

## GETTING TO AND FROM WHISTLER



### BUS & SHUTTLE SERVICES (JUNE 1 - SEPTEMBER 30)

Less costly mode of transportation but expect wait times at the airport and longer travel times as these busses and shuttles are not direct to the hotel and will stop along the way. Pacific Coach Lines (PCL) is the main bus line, but RIDEBOOKER can provide alternate shuttle times with 72 hours’ notice from 0800-2000. Ridebooker will guarantee your departure from the airport a maximum of 2 hours after meeting their agent at the terminal.

- Both PCL & Ridebooker depart only from International arrivals area.

TO WHISTLER FROM VANCOUVER INTERNATIONAL AIRPORT (YVR) & DOWNTOWN VANCOUVER		
DEPARTING AIRPORT:	DEPARTING DOWNTOWN VANCOUVER:	
1000	1040	
1300	1340	
1630	1710	TRAVEL TIME
2000	2040	3 - 3.5 HOUR

TO DOWNTOWN VANCOUVER & VANCOUVER INTERNATIONAL AIRPORT (YVR) FROM WHISTLER:		
DEPARTING FAIRMONT:	ARRIVE DOWNTOWN:	ARRIVE VANCOUVER AIRPORT (YVR):
0440		0715
0540	0800	0830
0740		1030
0840	1100	1130
0940	1230	1300
1140		1430
1210	1430	1500
1240		1530
1340		1700
1510	1730	1600
1540		1830
1740		2030

TO HORSESHOE BAY FERRY TERMINAL FROM WHISTLER:	
DEPARTING FAIRMONT:	ARRIVE HOESHOE BAY TERMINAL:
0940	1130
1340	1530

### RATES:

Vancouver International Airport to/from Whistler:

- ONE WAY: Adults \$64 - \$69  
Children (5-12) \$30 - \$32
- ROUND TRIP: Adults \$118 - \$138,  
Children (5-12) \$59 - \$60

Downtown Vancouver to/from Whistler

- ONE WAY: Adults \$55 - \$69  
Children (5-12) - \$27.50-\$30
- ROUND TRIP: Adults \$100 - \$138,  
Children (5-12) \$50 - \$60

Horseshoe Bay (ferry terminal) to/from Whistler:

- ONE WAY: Adults \$49  
Children (5-12) \$30

### PLEASE NOTE:

- Children 4 and under ride free provided they sit on an adult’s lap with Pacific Coach Lines
- Children 5 and under ride free with Ridebooker which offers child and booster seats
- Full payment is taken by both Pacific Coach Lines (PCL) and Ridebooker at the time of booking
- Charges are 100% non-refundable within 72 hours of travel. Outside of 72 hours will be a 15%-20% administrative fee

Rates and times are subject to change without notice.

CONTINUED ON NEXT PAGE



# TRANSPORTATION

## GETTING TO AND FROM WHISTLER



Image: Tourism Whistler | Mike Crane

### CHAUFFEURED VEHICLES & PRIVATE COACH SERVICE

Preferred method of transportation based on no wait times, shortest travel times to/from Whistler & personal and professional service.

One-way rates to/from Whistler & Vancouver Airport/downtown Vancouver:

Sedan	1 or 2 people	from \$340
Luxury SUV	5 or 6 people	from \$405
Sprinter Van	Up to 11 people	from \$425
Luxury Limo-Bus	Up to 20 people	from \$575
Mini-Bus	Up to 24 people	from \$650

Rates do not include driver gratuity, \$10 airport parking fee (for arrivals only) or 5% tax. Rates are subject to change without notice.Travel time to will be approximately 2.5 hours

### AUTOMOBILE RENTAL:

Avis is the only car rental agency in Whistler.

- Daily rates vary based on availability & demand & usually range from \$60 to \$125.
- One way rentals are subject to additional fees that range from \$50 to \$100.
- Hotel nightly parking rates are \$35 for self-parking and \$39 for valet parking.
- Most other major car rental agencies operate in or near the Vancouver Airport but cars cannot be dropped or picked up in Whistler.



# TRANSPORTATION

## GETTING TO AND FROM WHISTLER



Image: Tourism Whistler | Mike Crane

### HARBOUR AIR FLOAT PLANE

Harbour Air’s daily scheduled service flights connect Whistler to Vancouver and Victoria. Just a short distance from the hotel, the terminal is located 3 km north of Whistler Village on Green Lake at 8069 Nicklaus North Boulevard. [MAY - OCTOBER only.](#)

<b>DOWNTOWN VANCOUVER TO WHISTLER:</b> 9:00 AM & 11:40 AM <b>WHISTLER TO DOWNTOWN VANCOUVER:</b> 12:45 PM & 6:00 PM	35 MINUTE FLIGHT TIME
<b>VICTORIA (INNER HARBOUR) TO WHISTLER:</b> 9:40 AM <b>WHISTLER TO VICTORIA (INNER HARBOUR)</b> 11:30 AM	60 MINUTE FLIGHT TIME

- Luggage capacity per person is 25lbs for both Vancouver and Victoria flights.
- Credit card is required to guarantee a flight. Payment will be processed just prior to the flight
- Rates from \$164/ adult, \$106/child (ages 2-11)
- 24-hour cancellation policy.

### HELICOPTER CHARTERS:

Helicopter charter services are available and rates are available upon request, starting about \$3000 plus tax, one way between Vancouver Airport and Whistler Heliport.





# DINING GUIDE

With flavourful menus crafted to inspire, comfort and delight, the Fairmont Chateau Whistler culinary team has created a delicious variety of Whistler dining choices.







# THE GRILL ROOM



VOTED ‘BEST WHISTLER RESTAURANT’ AT THE 2018 VANCOUVER MAGAZINE AWARDS, THE GRILL ROOM IS WHISTLER’S ONLY AAA/CAA FOUR-DIAMOND RATED RESTAURANT DESTINATION FOR CHOPS, STEAK AND SEAFOOD.

Showcasing the finest Canadian prime cuts and fresh seafood for evening dining, The Grill Room, a hidden gem tucked beside The Wildflower, is a must for every visit to Fairmont Chateau Whistler. The Grill Room’s signature stone fireplace and rich cherry wood wine cabinets create a soft and welcoming ambience for exceptional regional cuisine paired with the finest wines of British Columbia.

Menu highlights include dishes that integrate regional ingredients with seasonal influences such as Canadian AAA Prime beef, Ocean Wise seafood and organic produce grown by our local farmers. With warm, inviting service, table side appetizers and the occasional bottle of sparkling wine being sabered, Grill Room is the perfect Whistler restaurant location for a night out with friends or a romantic dinner for two in Whistler.

### The Private Dining Room

Looking to celebrate a special occasion? Grill Room’s intimate private dining room with floor to ceiling glass windows and rich decor accommodates up to 18 guests and is perfect for a social gathering or after work party.

**DINNER:** 6:00 PM - 9:00 PM (DAILY)

Reservations are highly recommended. All menus are seasonal and subject to change.



### MENUS

- DINNER
- DESSERT

BOOK NOW



PRIVATE DINING ROOM





# THE WILDFLOWER

THE WILDFLOWER’S SIGNATURE WARM AND INVITING AMBIANCE IS THE IDEAL CASUAL RESORT SETTING FOR BREAKFAST AND DINNER.

Featuring mountain views and classic menu favourites, our casual family restaurant is the perfect place for a delicious à la carte breakfast or the expansive alpine buffet. For dinner, enjoy a wide array of locally-sourced, Pacific Northwest cuisine, sharable platters and an extensive wine list.

Showcasing locally inspired dishes and innovative classics in a family-friendly restaurant setting, The Wildflower also offers extensive ‘by the glass’ wine selections, a noteworthy variety of regional beer and signature cocktails. During Whistler’s warm, summer months, enjoy alfresco dining on The Wildflower’s garden patio.

Family dining offers for Fairmont hotel guests include ‘Kids 5 & Under Eat Free.’

**BREAKFAST:**

MONDAY - FRIDAY 7:00 - 10:30 AM.  
SATURDAY - SUNDAY 7:00- 11:00 AM

**DINNER:** 6:00 PM - 9:00 PM

On selected holiday weekends, brunch is available between 11:30 a.m. and 1:00 p.m. Reservations are highly recommended. All menus are seasonal and subject to change.



The Wildflower

**MENUS**

- BREAKFAST
- DINNER
- DESSERT

BOOK NOW







# PORTOBELLO

FRESH OFF AN EXTENSIVE RENOVATION, PORTOBELLO OFFERS AN ELEVATED CASUAL DINING EXPERIENCE WITH AN OPEN, ANIMATED KITCHEN. FOLLOW THE CAPTIVATING AROMAS OF BBQ, FRESHLY BAKED BREAD, RICH COFFEE AND MOUTH-WATERING TREATS TO PORTOBELLO.

Located in the lower lobby of Fairmont Chateau Whistler resort hotel, at the base of Blackcomb Mountain, Portobello's hip, casual setting serves up scrumptious breakfast bowls, specialty coffees and pastries, and legendary made-to-order sandwiches. For dinner, Portobello features open-flame rotisserie chicken, pork ribs, savoury sides and delectable smoked brisket on the smokehouse menu - best served family style. The new, full service bar focused on local craft beers is a great apres spot, or have a seat on the patio for a relaxed vibe, great people watching and mountain views. From the rustic, modern alpine design to the new market-style retail space, Portobello is perfect any time of the day.

EAT IN | TAKE OUT | PATIO DINING

**BREAKFAST:** 7:00 - 10:30 AM.

**LUNCH:** 11:00 AM - 4:00 PM

**APRÉS:** 4:00 - 5:00 PM (DRINKS ONLY)

**SMOKEHOUSE DINNER:** 5:00 - 10:00 PM

All menus are seasonal and subject to change. Private events are available.

## PORTOBELLO

### MENUS

- BREAKFAST
- LUNCH
- DINNER
- DRINKS



PHOTO: CHRISTINE FLYNN







## THE MALLARD LOUNGE

CASUAL, REFINED AND NESTLED AT THE BASE OF BLACKCOMB MOUNTAIN, FAIRMONT'S MALLARD LOUNGE AND TERRACE IS ONE OF WHISTLER'S MOST ICONIC DESTINATIONS AND IS THE IDEAL DESTINATION FOR SUNNY, SUMMER PATIO COCKTAILS.

One of Whistler's liveliest spots for après and evening entertainment, The Mallard Lounge is an iconic destination for visitors and locals alike. Live music, a roaring fireplace and master mixologists with their signature blends of house-infused spirits have created a legendary following. Whether for lunch, dinner, an evening nightcap or a refined afternoon, The Mallard Lounge presents a warm, casual experience at the base of Blackcomb Mountain. Try our Mountain Burger with savoury truffle fries, fresh organic salads and decadent selections from the Chocolate Bar.

For upper Whistler Village night life, The Mallard Lounge serves up the finest Canadian and West Coast food and classic nightclub live entertainment seasonally. Conveniently located within arms' reach of the Lounge, two roaring fire pits nestle beside the slopes of Blackcomb Mountain on the Mallard Terrace and offer a warm invitation for tales of Whistler resort adventures.

### HOURS OF OPERATION:

FOOD SERVICE 11:00 A.M. TO 12:00 A.M.  
COCKTAIL SERVICE 11:00 A.M. TO 12:00 A.M.  
LIVE ENTERTAINMENT NIGHTLY

All menus are seasonal and subject to change. Reservations not required.

THE *Mallard* LOUNGE

### MENUS

- FOOD & DRINKS
- SEASONAL COCKTAILS







# THE CLUBHOUSE

AN INCREDIBLE MOUNTAIN GOLF EXPERIENCE DESERVES EQUALLY MEMORABLE DINING.

Offering picturesque views of the 18<sup>th</sup> hole, the Fairmont Chateau Whistler Golf Clubhouse presents a casual patio setting for golfers and non-golfers alike. Discover Whistler's best kept patio secret. The Clubhouse at Fairmont Chateau Whistler Golf Club is open daily for breakfast, lunch and dinner and offers a beautiful patio setting. Join us for weekly specials including Ceasar Sunday and Burger & Beer Fridays.

**BREAKFAST:** 7:00 - 11:00 AM  
**LUNCH:** 11:00 AM - 6:00 PM  
**DINNER:** 6:00 - 8:00 PM

All menus and opening times are seasonal and subject to change. Complimentary parking for Fairmont Chateau Whistler, restaurants including The Clubhouse, is available. Please see the Guest Services team at Fairmont hotel's front door. For Whistler dinner guests of The Clubhouse, a complimentary transfer directly to and from Fairmont will be provided.

'Kids Eat Free' family restaurant program is available when children are accompanied by an adult purchasing an entrée. Fairmont Chateau Whistler hotel guests only.



THE CLUBHOUSE

## MENUS

- BREAKFAST
- ALL DAY
- DINNER
- DRINKS







# THE CHALET

WARM HOSPITALITY AND HEARTY ALPINE CUISINE SET THE STAGE FOR A UNIQUE, WINTER EVENING DINING EXPERIENCE, THE CHALET IS OPEN MID DECEMBER THROUGH MARCH AND IS LOCATED ON-SITE AT THE CLUBHOUSE.

Twinkling lights and a crackling fire set the stage for a magical winter dining experience at The Chalet. Featuring European-inspired alpine cuisine, The Chalet's menu offers the perfect collection of warm and welcoming dishes you'd expect in North America's favourite mountain resort. Indulge in savoury fondues, house-made pâté, schnitzel, rösti and artisan charcuterie platters.

Be sure to save room for the chocolate fondue dessert and an after-dinner selection from the schnapps wagon.

Family dining offers for Fairmont hotel guests include 'Kids 5 & Under Eat Free.' Complimentary shuttle available from Fairmont Chateau Whistler.

**The Chalet is now closed for the season. Please stay tuned for reopening dates in early December 2018.**

**DINNER:** 5:30 PM - 9:00 PM

Reservations are highly recommended. All menus are seasonal and subject to change.



## MENU

- DINNER (2017/18)

[BOOK NOW](#)







## RESORT ACTIVITIES



IMAGE: TOURISM WHISTLER | MIKE CRANE

**ATV/QUAD & SIDE-BY-SIDE TOURS:** Enjoy some off road areas of the Whistler Valley. Several companies are available & no experience is necessary. Appropriate gear is provided so you can have fun in all kinds of weather.

**ART GALLERIES:** Whistler is home to numerous galleries ranging from monumental sculpture, magic realism, contemporary abstract and First Nations Native art. Whistler Art Walk is available from July 1- August 31.

**ART STUDIO:** Create your very own souvenir. Your carving instructor will you make a masterpiece of your very own. Classes are between 12-6 daily for adults and children (3 and up).

**AXE THROWING:** Whistler's newest activity! Learn to throw an axe in a safe and contained environment and then have a friendly competition with friends and family, located in Function Junction, Whistler.

**AUDAIN ART MUSEUM:** British Columbia's newest museum, dedicated to art that has been created throughout our diverse province and along its multiple shores. Great for all ages to visit us year round.

**BABY AND PET SITTING SERVICES:** Private baby and pet-sitting is available with fully qualified nannies over the age of 20 with current First-Aid and CPR certification. Rates are from \$20/hour.

**BEAR VIEWING:** Join one of three local companies on a vehicle-based tour into the mountains around Whistler for an educational, up-close and personal experience with our local Black Bear population. Please inquire in advance, as space can be limited.

**BIKE PARK & LESSONS:** Whistler has one of the best bike parks in the world. Play on a variety of trails and jumps. Set up for beginners, intermediate and advanced riders. Lessons are available for those who would like to learn the sport or to improve their skills.

**BIKE RENTALS:** Rent a bike to explore the local area, take a cross-country mountain bike lesson and discover the excitement of single-track riding. Biking maps are available at the Concierge Desk.



IMAGE: TOURISM WHISTLER | JUSTA JESKOVA



PHOTO CREDIT: CANADIAN WILDERNESS ADVENTURES





## RESORT ACTIVITIES



PHOTO CREDIT: TOURISM WHISTLER | MIKE CRANE

**BOBSLEDDING:** Bobsleighs equipped with wheels, a trained pilot and four enthusiastic passengers. Tours include safety orientation, a tour of the 2010 Olympic Winter Games venue & an exclusive track walk. Your sleigh will reach speeds of up to 90 km/hr.

**BUNGEE JUMPING:** Are you ready? A giant 160ft leap of faith from the bungee bridge over the spectacular scenery of the Cheakamus River with Whistler Bungee Inc. Experience bungee jumping in the beautiful wilderness of the Whistler valley nestled between old growth forests and rugged basalt column cliffs.

**CANOE/KAYAK:** Self-guided & fully-guided options to explore Alta Lake or paddling down the River of Golden Dreams by kayak & canoe. The River of Golden Dreams is best to be done guided as the river is flat but swift flowing and can be challenging for beginner paddlers.

**CLIMB & DINE (KIDS):** Located at The Core in the Whistler Conference Centre. Children (4-14) can enjoy a 2-hour or 3-hour guided rock climbing session including a kid-style dinner.

**DINING TOURS:** Experience the best of Whistler restaurants in one night! Enjoy a guided walking tour and experience a fantastic multi-course, progressive lunch, dinner, or dessert, where each delicious course is provided by one of the different restaurants in Whistler.

**DOWNHILL SKIING/SNOWBOARDING:** The Horstman Glacier on Blackcomb Mountain is open until July 15 from 11am to 3pm! Not suitable for beginners. All skiers and riders must be advanced or experts.

**ESCAPE ROOM:** Whistler's newest indoor adventure offering four themed-escape rooms for you and your family to try escape in 45 minutes. It's harder than you think!

**FARMERS MARKET:** You don't have to wander far to experience Whistler's open air Farmers' Market, conveniently located in Blackcomb Village. Featuring fresh produce from the Sea to Sky Corridor, tasty artisan foods, local artists and live music, the markets are a great time for all ages. Open Sundays 11:00am - 4:00 pm from May through October 2018, and a midweek Farmers' Market takes place on Wednesdays during July and August from 2:00 to 7:00 p.m.



PHOTO CREDIT: TOURISM WHISTLER | MIKE CRANE



PHOTO CREDIT: TOURISM WHISTLER | JUSTA JESKOVA





## RESORT ACTIVITIES



PHOTO CREDIT: TOURISM WHISTLER | MIKE CRANE

**FISHING:** Experienced guides take you to some of the best fishing locations in the area. Your guide can teach you the proper techniques for spin cast and fly fishing. Licenses are not included and should be arranged prior to your tour at [www.fishing.gov.bc.ca](http://www.fishing.gov.bc.ca)

**FLOATPLANE SIGHTSEEING:** Floatplane sightseeing tours take you over the mountains and glaciers in the area. Alpine lake tours are also available with an added option for a picnic on the shores of a remote alpine lake.

**FRISBEE GOLF:** Whistler has a great mountain-style frisbee golf course. Similar to regular golf, you enjoy a great walk in the woods.

**GLACIER WALK & HIKE:** Unique adventure allowing you to be a true mountaineer. Equipped with harnesses, ice axes, crampons and short roped you will be guided across a glacier at the top of our local mountains.

**GOLF:** A golf experience featuring snow capped mountains and breathtaking scenery. Whistler's four golf destinations are considered some of the best golf courses in the world and are designed by the most respectable names in golf including Jack Nicklaus, Arnold Palmer, Robert Trent Jones Jr. and Robert Cupp.

**GOLF DRIVING RANGE:** Three ranges in the Whistler area including the Fairmont Chateau Whistler Golf Course which is complimentary to all in house guests. We can provide transportation to our facility.

**GONDOLA SIGHTSEEING:** Ride the various open-air chairlifts and gondolas, including the world-record breaking PEAK 2 PEAK Gondola. Lunch is available on both mountains. BBQ dinners are available on Friday, Saturday and Sunday on Whistler Mountain.

**HELICOPTER SIGHTSEEING:** Get a bird's-eye view of Whistler valley and the surrounding area from the comfort of a helicopter. A variety of tours are available ranging from 20 to 45 minutes. Spectacular glacier landings can also be arranged

**HIKING:** Whistler boasts endless hiking based on your ability and interest level. Explore mountains, forests, wetlands, alpine meadows and much more with a guide to explain the flora, fauna and geology of our area. Guides can be arranged.

**HORSEBACK RIDING:** See the landscape around Whistler from high in the saddle on a memorable horseback riding tour. Springtime offers gentle trail rides through the forest. Enjoy mountain air and incredible scenery with your family and new equine friends. Tours available for guests of all riding abilities.

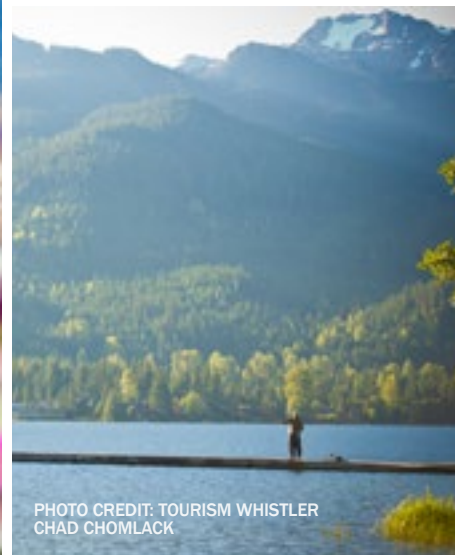
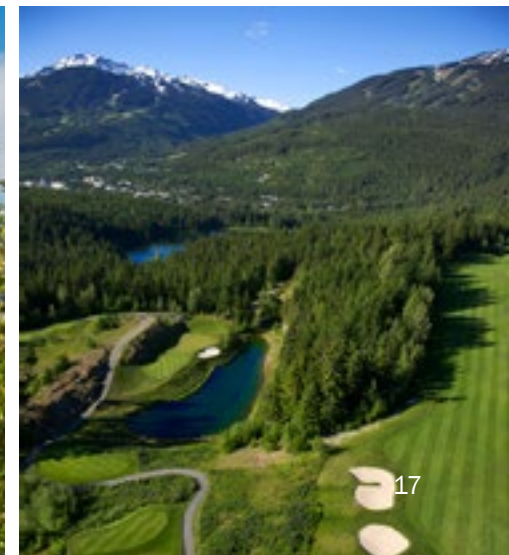


PHOTO CREDIT: TOURISM WHISTLER  
CHAD CHOMLACK



PHOTO CREDIT: TOURISM WHISTLER | MIKE CRANE



17





## RESORT ACTIVITIES

**JEEP 4 X 4 TOURS:** Great for the whole family, a scenic 4X4 tour showcasing the Whistler Sliding Center & Horstman Glacier or the Callaghan Valley, an old growth forest to an old gold mine and some gold panning. The Crystal Hut on Blackcomb Mountain Salmon Bake is available for mountain top dining in the late afternoon.

**JET BOATING:** Adventure up & down the Lillooet & Green rivers in the town Pemberton just 30 minutes north of Whistler. You will be thrilled you as you skim over numerous rapids and power past a variety of river debris. There will lots of opportunity to enjoy the views of Mount Currie.

**MEADOW PARK SPORTS CENTRE:** Located 10 minutes north on Highway 99, this indoor sports facility features an indoor swimming pool, toddler wading pool and indoor ice-skating rink.

**MINI GOLF:** Practice your putting on the 18-hole mini course, right outside The Chateau or at the Riverside Campground, a ten-minute drive north.

**MOVIE CINEMA:** Whistler's local movie theatre offers a weekly variety of films daily. Visit the Concierge Desk for weekly showings.

**PORSCHE EXPERIENCE:** Experience the rush of driving a exotic supercar from Vancouver to Whistler on the Sea to Sky highway, or testing a Porsche's off-roading capabilities on a specially designed course with instruction from dedicated driving instructors.

**ROCK CLIMBING:** Offering over 4,000 square feet of indoor rock, including cracks, dihedrals and overhangs, Whistler's only indoor climbing centre is a great activity. No experience necessary, guided and supervised climbing sessions are available and all ages are welcome.

**SPA SCANDINAVE:** Invigorate and cleanse your body and mind in the hot baths and refreshing waterfalls, melt away with a relaxing massage in one of Whistler's top health spas, and breathe in the invigorating country air. Situated just north of Whistler Village this unique Whistler day spa overlooks incredible mountain vistas and Whistler Blackcomb's valleys.

**SHOPPING:** Whistler is a shopper's paradise. Spend days browsing the shops in the Village, Function Junction and the hotel itself for fine artwork and fashion, jewelry, the latest outdoor sports wear, equipment, gifts and luxury items.

**SKYDIVING:** This incredible experience includes a scenic flight around Mount Currie before the jump of a lifetime. While harnessed to your experienced instructor you will have an exhilarating freefall followed by a thrilling canopy flight. Custom videos are available.

PHOTO CREDIT: TOURISM WHISTLER | ANDREW STRAIN



PHOTO CREDIT: CANADIAN WILDERNESS ADVENTURES



PHOTO CREDIT: TOURISM WHISTLER | CHAD CHOMLACK

[TRANSPORTATION](#)

[DINING](#)

[RESORT ACTIVITIES](#)

[GOLF](#)

[POOLS & CABANAS](#)

[SPA](#)

[WHISTLER  
EXPERIENCE GUIDE](#)

[HIKING](#)

[BIKING](#)

[WATERSPORTS](#)

[CULTURE](#)

[KIDS](#)

[SHOPPING](#)

[PETS](#)

[CONTACT](#)





## RESORT ACTIVITIES



PHOTO CREDIT: SUPERFLY ZIPLINES

**SQUAMISH LIL'WAT CULTURAL CENTRE:** Offers an interactive cultural journey through Whistler's Aboriginal art, history, music and dance. Take a guided or self guided tour through the museum, exhibits and galleries. Located at the bottom of our drive way.

**TENNIS:** The hotel offers two complimentary outdoor courts and equipment. Courts can be reserved at the Heath Club. Indoor courts and lessons are available at the Whistler Racquet Club located in Whistler Village.

**TRAMPOLINE:** Bounce Indoor Trampoline Park is located about a 15 minute drive south of Whistler Village. Great fun for kids of all ages!

**TREETOP ADVENTURE:** Play like a kid again on this incredibly unique aerial tree course with over 70 elements ranging from mild to wild. The course is a natural team building activity and the perfect adventure to share with family, friends and strangers alike.

**VIA FERRATA:** One of the 1st Via Ferrata's in Canada, providing exhilarating views and a vertical perspective you may not have thought possible! Via Ferrata does not require any special skills or prior experience. This thrilling activity is not reserved for seasoned mountain climbers – any reasonably fit hiker can do it!

**VALLEA LUMINA:** Join a twilight expedition to explore the mysterious beauty of Whistler's forest at night with the brand new Lumina experience - heightening the natural landscape with multimedia to create a world filled with adventure and enchantment. Vallea Lumina is a 1.5 km pathway through an old-growth forest that takes visitors of all ages on an hour-long night walk in pursuit of hidden wonders, telling a story that unfolds in chapters along the way.

**WHISTLER MUSEUM:** Offering stories from fun loving pioneers, to the creation of Whistler Blackcomb, to the 2010 Winter Olympic Games. Whistler Museum has plenty of interactive exhibits including the chance to take your photograph with a real Olympic torch. Showcasing natural history including information on Whistler's most famous non-human resident: black bears.

**WHITEWATER RAFTING:** The Cheakamus, Green and Elaho rivers are available in the local area allowing you to choose your own adventure. Whitewater classes range from 1 to 4. Suitable for children 6 and older.

**YOUTH CENTRE:** Whistler's Youth Centre at Millennium Place offers computers, Nintendo, Sony Playstations, a mini skateboard ramp, a pool table, air hockey, a TV lounge and a big screen projection theatre.

**ZIP LINE TOURS:** Two companies offer this very popular & thrilling adventure as you soar through the air and surrounded by breathtaking views of the surrounding mountain and valley floor. Whistler boasts some of the biggest, longest and fastest lines in North America but can cater to the absolute beginner that isn't quite so sure about what to expect.



PHOTO CREDIT: CANADIAN WILDERNESS ADVENTURES



PHOTO CREDIT: TOURISM WHISTLER | MIKE CRANE





# FAIRMONT CHATEAU WHISTLER GOLF CLUB

A fun and challenging course for players of all levels, this Robert Trent Jones, Jr. masterpiece opened in 1993 and offers a par 72, 18-hole Audubon-certified course.



## FAIRMONT CHATEAU WHISTLER GOLF CLUB

Celebrating 25 years in 2018. Dramatic natural landscapes, stunning views and wildlife are signatures of the Fairmont Chateau Whistler Golf Club. Carved out of the slopes of BC's Coast Mountain Range, this par 72, 18-hole Robert Trent Jones Jr. masterpiece is also a certified Audubon Cooperative Sanctuary (ACSP).



### HOTEL GUEST PRIVILEGES

Fairmont Golf Club guests staying at the Fairmont Chateau Whistler resort enjoy these exclusive golf privileges:

- Complimentary, unlimited rounds of play are extended to all Fairmont Guests on the same day of play following their paid round of golf.
- Complimentary, unlimited use of the Practice Facility is extended to all Fairmont Guests throughout their stay when a round of golf is reserved at the Fairmont Chateau Whistler Golf Club.
- Children golf for free (applies to one child 18 years old and under per paying adult after 1:00 PM).

### PRACTICE & LEARNING CENTRE

The Fairmont Chateau Whistler Practice & Learning Centre is one of Canada's most scenic practice facilities. This double-ended, 350-yard long facility features:

- Short Game Area featuring a 10,000 square foot putting green, practice bunkers, and chipping and pitching areas.
- Tees with combination grass and artificial turf teeing areas
- Kiosk building with washrooms and retail area at public end of the facility
- Use of facility is included with all green fees

### RENTAL EQUIPMENT & RETAIL

The Fairmont Golf Shop located in The Clubhouse features a selection of logo'd attire, TaylorMade golf club and shoe rentals. Open daily throughout the golf season, the Fairmont Chateau Whistler Golf Shop has everything you need for a memorable day of golf including golf attire, balls, shoes, sunglasses and more.

### DINING AT THE CLUBHOUSE

An incredible mountain golf experience deserves equally memorable dining. Offering picturesque views of the 18th hole, The Clubhouse at the Fairmont Chateau Whistler Golf Club presents a casual patio setting for breakfast, lunch and dinner.

Our Guest Services team would be happy to offer complimentary transfers to and from the hotel. The Fairmont Chateau Whistler Golf Club is located just up the road at 4612 Blackcomb Way.

CONTINUED ON NEXT PAGE 20





# FAIRMONT CHATEAU WHISTLER GOLF CLUB

Elevation changes of more than 400 feet overall create an impressive golf opportunity and a naturally spectacular BC golf experience.

Carved out of the slopes of the Coast Mountain range in British Columbia, this magnificent Whistler golf course allows nature to dictate the path without constraints of commercial influence. The mountain course traverses creeks, ponds, stands of ancient Douglas fir and granite rock.



### GREEN FEES

**MAY 5 - MAY 24, 2018:** \$119 Daily | \$79 Twilight

**MAY 25 - JUNE 21, 2018:** \$189 Daily | \$139 Twilight

**JUNE 22 - SEPTEMBER 9, 2018:** \$189 Daily | \$139 Twilight | \$199 Weekend Rate (8:00 am - 11:50 am tee times)

**SEPTEMBER 10 - OCTOBER 1, 2018:** \$189 Daily | \$139 Twilight

**OCTOBER 2 - OCTOBER 8, 2018:** \$119 Daily | \$79 Twilight

\*Rental of a GPS-installed power cart is mandatory, \$25 per person. Twilight rate applies after 3:00 PM. Complimentary transfers to and from the hotel are available. Please see guest services.

To book your tee time or for more information, please call: 604 938 2092 or visit: [WHISTLERMOUNTAINGOLF.COM](http://WHISTLERMOUNTAINGOLF.COM)







## HEALTH CLUB & FITNESS CENTRE

Healthy living and Whistler's top health and wellness vacation destination go hand in hand at the Fairmont Chateau Whistler spa hotel and resort.



### HEALTH CLUB & FITNESS CENTRE AT FAIRMONT CHATEAU WHISTLER

Energize your body and mind with a cardio workout or relax in one of three outdoor whirlpools in this spectacular Whistler mountain resort setting.\*

Health Club & Fitness Centre Hours of Operation: Open seven days a week: 5:30 a.m. to 11:00 p.m. Guest room key is required for access.

#### HEALTH CLUB FACILITY & WHISTLER WELLNESS PROGRAMS:

- Outdoor 60 ft. heated lap pool with underwater music
- Indoor/outdoor heated leisure pool
- Pool deck with lounge chairs and umbrellas
- Private cabana rentals available, May-September only. Please inquire within the hotel for reservations and rates
- Food and Beverage service available
- Indoor whirlpool
- Three outdoor whirlpools
- Dry sauna
- Two eucalyptus steam rooms
- Men's and Women's Change rooms
- Complimentary towel and locker service
- Swimwear and aquatic items for purchase
- Two Tennis courts
- Personal Training & Exercise Therapy

#### COMPLIMENTARY YOGA CLASSES

Yogis rejoice! Fairmont Chateau Whistler offers complimentary yoga classes, available to registered hotel guests, held daily in the Yoga Suite, Room 353 on the 3rd Floor. Explore a mix of yoga styles by joining our Open and Invigorate class in the morning or our Restore and Renew class in the afternoon.\*

#### FAMILY FUN

The following children's toys and kid-friendly resort activities are available at the Fairmont Chateau Whistler Health Club for your family's vacation fun in Whistler

- Variety of board games
- Croquet [May-September]
- Sport items (Soccer balls, Footballs, Aki bags, Frisbee, Bocce)

**\*Please Note:** Guests must be at least 16 years of age to access this Whistler resort fitness area. Schedule, class type and location are subject to change. Visit the Health Club, Front Desk, Concierge or dial '0' from your guest room for more details.

#### FITNESS CENTRE:

- High Definition plasma televisions and personal headsets (available)
- Three treadmills (Precor)
- Two stair climbers (Precor)
- Two upright bikes (Precor)
- Two recumbent bikes (Precor)
- One rowing ergometer (Concept II)
- Three elliptical cross-trainers (Precor)
- Nine Cybex weight stations
- Selection of dumbbell free weights up to 65 pounds
- Mats/Exercise balls
- Proprioception boards / Balance training tools
- Elastic Bands
- Skipping Ropes

#### TENNIS:

- Whistler Tennis Lessons & Resort Tennis Courts
- Please book the in-resort tennis courts and Whistler tennis lessons directly with the Fairmont Health Club.
- Two outdoor hard courts with Plexipave surface [May-September only]
- Whistler tennis tournaments and Whistler resort tennis camps are available with certified tennis professionals.
- Racquet rental and tennis balls available for purchase.

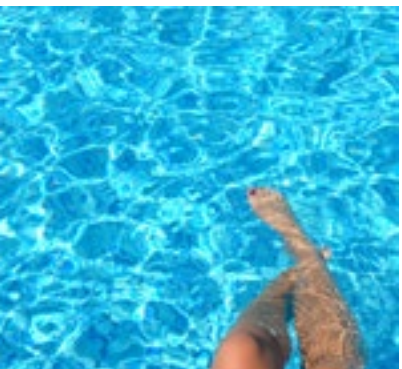
CONTINUED ON NEXT PAGE 22





# POOLS & CABANAS

Healthy living and Whistler’s top health and wellness vacation destination go hand in hand at the Fairmont Chateau Whistler spa hotel and resort.



FOR THE ULTIMATE IN LUXURY AND RELAXATION, FAIRMONT CHATEAU WHISTLER IS PLEASED TO OFFER CABANAS FOR RENTAL.

Our **MOUNTAIN MEMORIES CABANA PACKAGE** includes the following:

- Private chaise lounge and seating area
- Pitcher of fresh fruit water
- Fresh fruit platter with honey yogurt
- Selection of reading materials
- Towels
- Bottle of SUNBUM sunscreen

## TIMES AND RATES

5:30 AM - 12:30 PM	\$120
1:00 PM - 11:00 PM	\$200
WHOLE DAY	\$250

## CABANA PACKAGE ADD-ONS\*

### FAMILY. STYLE.

(FOR 4)  
Includes two frozen adult beverages, two kids’ sundaes and boogie boards.

### BUCKETS OF FUN

(AGES 19+)  
Includes a bucket of domestic beer.  
Upgrades are available for an extra fee.

### RISE AND SHINE

Choice of flavour on a shake pitcher.

\*Packages are \$30 each, taxes & gratuity extra

Cabana Package accommodates a maximum of eight occupants at a time, and outside alcohol is prohibited.

To reserve your cabana, please inquire with a Health Club Attendant, at the Concierge or dial ‘0’ for assistance from Royal Service.

**\*Please Note:** Guests must be at least 16 years of age to access this Whistler resort fitness area. Bathers under the age of 12 are not permitted to swim unless accompanied by an adult not less than 16 years of age. Schedule, class type and location are subject to change. Visit the Health Club, Front Desk, Concierge or dial ‘0’ from your guest room for more details.





## VIDA SPA



### VIDA SPA AT FAIRMONT CHATEAU WHISTLER. FEEL WELL, LOOK WELL, LIVE WELL.

Located within Fairmont Chateau Whistler Vida Spa, the treatments are tailored to the needs of each guest and are designed to restore energy and promote well-being. Choose from a range of traditional body therapies, facials, wraps and exfoliations. Many of the treatments are based on Ayurveda, a 5,000 year old Indian medicine system.

The philosophy of Vida Spa in Whistler is strongly rooted on the delicate balance of inner calm, outer vitality, sensory pleasure and spiritual health. A Whistler spas holistic approach that blends the ancient Indian principles of Ayurveda together with modern practices ensures that each Whistler spa resort guest receives a personalized treatment that meets their individual needs.

- **MASSAGE EXPERIENCES**  
Offering a range of relaxation and therapeutic massages customized with essentials oils.
- **FACIAL EXPERIENCES**  
We offer relaxation or results driven treatments, we can accommodate your skin's needs.
- **BODY SERVICES**  
Focusing on your body's needs to rehydrate; our various scrubs and baths will alleviate your stress.
- **PACKAGES**  
Including Bridal, Couples, Girls Night Out, De-Stress, Warrior Yoga Packages, Events Planning

#### VIDA SPA HOURS OF OPERATION:

Hours of operation:

- Monday to Thursday 10:00 a.m. to 8:00 p.m. and
- Friday through Sunday 9:00 a.m. to 9:00 p.m.

For full spa please visit their website: [CLICK HERE](#)

To avoid disappointment, please book your Whistler resort and spa experience in advance.

Tel: 604 938 2086 | Fax: 604 905 0348 | E-mail: [WhistlerInfo@vidaspas.com](mailto:WhistlerInfo@vidaspas.com)





# WHISTLER EXPERIENCE GUIDE

EXPERIENCE WHISTLER  
LIKE A TRUE LOCAL



ADVENTURE AND BEAUTY AWAIT WITH FAIRMONT'S WHISTLER EXPERIENCE GUIDE. OFFERING A RANGE OF GUIDED EXCURSIONS SUITABLE FOR A VARIETY OF EXPERIENCE LEVELS, THIS PROGRAM IS AVAILABLE EXCLUSIVELY FOR REGISTERED FAIRMONT CHATEAU WHISTLER HOTEL GUESTS.\*

For a true local's perspective on Whistler's best destinations and activities, join our daily outings led by Fairmont's Whistler Experience Guide. Ryan and his team will be your hosts for mountain adventures, hiking, village tours and indoor activities that are 'off-the-tourist' track and capture the true essence of Whistler. Guided excursions are included for all registered Fairmont Chateau Whistler hotel guests.

## HIKING & BIKING

From family-friendly Lost Lake strolls to tours of The Whistler Train Wreck, a variety of hikes will be offered throughout the summer season. Or experience all the cycling fun as you explore Whistler's neighbourhood trails

## WATERSPORTS

Explore one of Whistler's pristine mountain lakes by canoe, kayak or stand-up paddle board. Enjoy an optional refreshing dip or 'take five' at a beautiful lake front beach.

## CULTURAL ACTIVITIES

Gain deeper understanding of the local community. Take a short walk over to the Squamish Lil'wat Cultural Centre to discover the rich culture of the region's First Nations people. Uncover our unique history at the Whistler Museum, and explore the Audain Art Gallery.

Please see Concierge Desk upon arrival for current offerings and complete. Available exclusively to our in-house guests although some activities do incur additional costs. Activities are subject to change and may be weather dependent.

## OTHER ACTIVITIES (from 1 - 3 Hrs)

Rain or shine, there is always plenty to explore in Whistler. Whether it's enjoying a round of Frisbee golf, learning something new, or visiting one of our favourite Whistler attractions, you can be sure to expect a fun-filled day!

- Olympic Venues Tour (3 hrs)
- Bounce Trampoline Gym (2.5 hrs)
- Brewery Tour (2.5 hrs) | 19+ years
- Whistler Museum Tour (1.5 hrs)
- Secrets of the Chateau (1 hr)
- North Arm Farm (3.5 hrs)

- Suitable for all experience levels.
- Activities vary day to day.
- Typically 3 options per day are available.
- Daily activities only are confirmed 48-72 hours in advance.





# HIKING

WHISTLER BOASTS ENDLESS HIKING BASED ON YOUR ABILITY AND INTEREST LEVEL. EXPLORE MOUNTAINS, FORESTS, WETLANDS, ALPINE MEADOWS AND MUCH MORE, ON YOUR OWN OR WITH A FAIRMONT WHISTLER EXPERIENCE GUIDES:

Whether you seek a scenic stroll around Lost Lake, a tour of the stunning glacier-fed Cheakamus Lake, or a challenging hike to Whistler's giant Ancient Cedars, we offer amazing guided hikes for a variety of fitness levels. Ask about the 'Train Wreck Hike' that takes you along the banks of the rushing Cheakamus River to the remains of a train derailment from the 1950s. Learn about the local flora, fauna and geology of our area.

Fitness levels range: Active - Moderate - Intermediate - All Levels

## WHISTLER EXPERIENCE GUIDE Hiking Options:

**Train Wreck** (2.5 hrs) | Moderate | Families welcome

**Lost Lake Loop** (1.5 hrs) | All levels | Families welcome

**Lost Lake Hike** (2 hrs) | Intermediate | Families welcome

**Rainbow Falls Hike** (1.5 hrs) Intermediate

**Lost Lake Trail Run** (1.5 hrs) | Active

**Cheakamus Lake** (3.5 hrs) | Intermediate

**Ancient Cedars** (3 hrs) | Active Fitness Level

Please note: Activities are subject to change and are weather dependent.



IMAGE: TOURISM WHISTLER: JUSTA JESKOVA



IMAGE: TOURISM WHISTLER: ROBIN O'NEILL

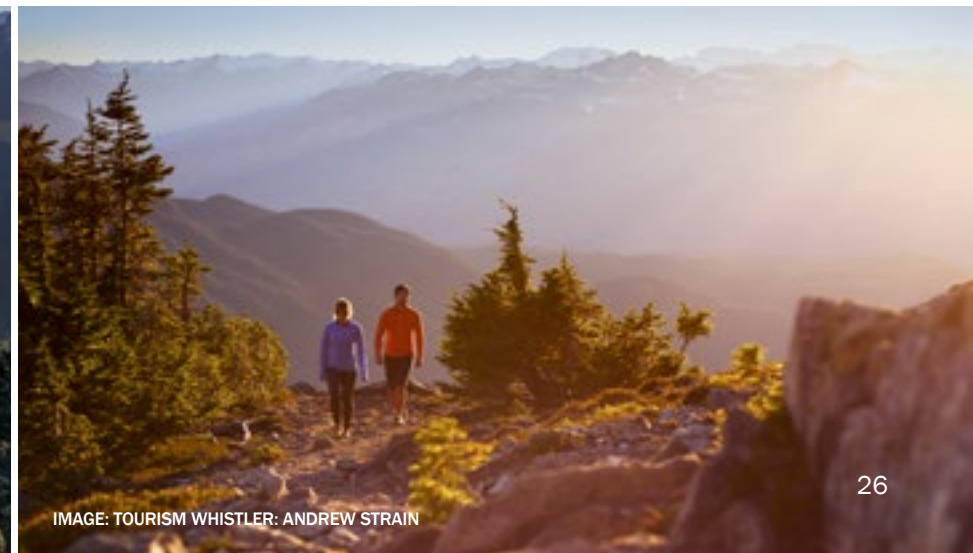


IMAGE: TOURISM WHISTLER: ANDREW STRAIN





# BIKING

## DISCOVER THE RUGGED BEAUTY OF WHISTLER’S NATURAL PLAYGROUND — ON TWO WHEELS.

For the casual rider, cruise around the neighbourhood to Lost Lake or along the Valley Trail to scenic lookout points. Up the ante with a trail ride and explore the vast network of trails in Whistler.

**BIKE PARK & LESSONS** - Whistler has one of the best bike parks in the world. Play on a variety of trails and jumps. Set up for beginners, intermediate and advanced riders. Lessons are available for those who would like to learn the sport or to improve their skills.

**BIKE RENTALS** - Rent a bike to explore the local area, take a cross-country mountain bike lesson and discover the excitement of single-track riding. Biking maps are available at the Concierge Desk.

Cross country tours and private guides are also available. Please contact the concierge team for more information.



PHOTO CREDIT: TOURISM WHISTLER | ANDREW STRAIN



PHOTO CREDIT: TOURISM WHISTLER | JUSTA JESKOVA



PHOTO CREDIT: TOURISM WHISTLER | MIKE CRANE





# WATERSPORTS

Explore one of Whistler's pristine mountain lakes by canoe, kayak or stand-up paddle board. Enjoy an optional refreshing dip, and 'take five' at a beautiful lake front beach.



IMAGE: TOURISM WHISTLER | ANDREW STRAIN

EXPLORE ONE OF WHISTLER'S PRISTINE MOUNTAIN LAKES BY CANOE, KAYAK OR STAND-UP PADDLE BOARD. ENJOY AN OPTIONAL REFRESHING DIP, AND 'TAKE FIVE' AT A BEAUTIFUL LAKE FRONT BEACH.

**Fishing**- Experienced guides take you to some of the best fishing locations in the area and will teach you the proper techniques to fly fish.

**Canoe/Kayak** - Self-guided & fully-guided options to explore Alta Lake or paddling down the River of Golden Dreams by kayak & canoe. The River of Golden Dreams is best to be done guided as the river is flat but swift flowing and can be challenging for beginner paddlers.

**Whitewater Rafting** - The Cheakamus, Green and Elaho rivers are available in the local area allowing you to choose your own adventure. Whitewater classes range from 1 to 4. Suitable for children 6 and older.



IMAGE: THE ADVENTURE GROUP



IMAGE: ERIC POULIN





# CULTURAL EXPERIENCES

GAIN DEEPER UNDERSTANDING OF THE LOCAL COMMUNITY. LEARN ABOUT THE HISTORY OF THE HOTEL ITSELF, OR TAKE A SHORT WALK OVER TO THE SQUAMISH LIL'WAT CULTURAL CENTRE TO DISCOVER THE RICH CULTURE OF THE REGION'S FIRST NATIONS PEOPLE. UNCOVER OUR UNIQUE HISTORY AT THE WHISTLER MUSEUM, AND EXPERIENCE THE PASSION OF THE 2010 GAMES ON AN OLYMPIC VENUE TOUR.

## AUDAIN ART MUSEUM

British Columbia's newest museum, dedicated to art that has been created throughout our diverse province and along its multiple shores. Explore the captivating world of First Nations art as you stroll through one of the world's largest collections of Northwest Coast masks. Experience adventure and intrigue in the works of some of Canada's most celebrated historical and contemporary artists including Emily Carr, E.J. Hughes and the internationally renowned photo-conceptualists Jeff Wall and Stan Douglas. A true BC arts and culture experience. Great for all ages to visit us year round.

[LEARN MORE](#)

## SQUAMISH LIL'WAT CULTURAL CENTRE

Offers an interactive cultural journey through Whistler's Aboriginal art, history, music and dance. Take a guided or self guided tour through the museum, exhibits and galleries. Located at the bottom of our drive way.

[LEARN MORE](#)

## WHISTLER MUSEUM

Offering stories from fun loving pioneers, to the creation of Whistler Blackcomb, to the 2010 Winter Olympic Games. Whistler Museum has plenty of interactive exhibits including the chance to take your photograph with a real Olympic torch. Showcasing natural history including information on Whistler's most famous non-human resident: black bears.

[LEARN MORE](#)

For more information on these incredible activities and many more, please see the Concierge.



IMAGE: TOURISM WHISTLER | JUSTA JESKOVA



IMAGE: TOURISM WHISTLER | JUSTA JESKOVA



IMAGE: TOURISM WHISTLER | MIKE CRANE



IMAGE: TOURISM WHISTLER | MIKE CRANE





THERE IS NO SHORTAGE OF FAMILY FRIENDLY FUN IN WHISTLER! IN ADDITION TO SUMMERTIME SIGHTSEEING ON WHISTLER AND BLACKCOMB MOUNTAINS, THERE IS ALL SORTS OF FAMILY FRIENDLY FUN TO ENJOY RAIN OR SHINE.

Whistler family vacation activities include ziplining, hiking, biking, golfing, wildlife tours, canoeing, swimming, and so much more. And when you stay at Fairmont Chateau Whistler, it is all within easy reach. Comfort, elegance and all the kid friendly amenities needed for the perfect family holiday. [LEARN MORE](#)

MORE IDEAS:

### JUNIOR GOLFERS PLAY FREE

Junior golfers (up to age 16) play free with a paying adult at Fairmont Chateau Whistler Golf Club.

### FAMILY ADVENTURE ZONE

The Adventure Zone located right in front of The Chateau at the base of Blackcomb is packed with fun for kids big and small with mini-golf, climbing walls and a mini-luge A dream come true for little adventurers, the kids fun zone at Blackcomb Base includes the Westcoaster Luge, Kiss the Sky Bungy trampoline, Hot Wheelz electric go kart and the NASA tested human gyro.

- Hours and Dates of Operation: June 16 to September 3, 2018:
- Sunday to Thursday (10 AM - 6 PM) & Friday to Saturday (10 AM - 8 PM)
- (Dates and hours are subject to change. Some activities are weather permitting.)

### PLAYGROUNDS

There are playgrounds scattered throughout Whistler including:

- A large playground in Whistler Olympic Plaza
- A beautiful playground by the Whistler Creekside shops
- Playgrounds at Whistler's parks
- The newly expanded Whistler Skate Park
- Indoor play areas at Myrtle Phillip School are available on a seasonal basis

### BABYSITTING

Babysitting Whistler is a childcare and nanny agency that provides safe fun active care while babysitting. They accept all kids from newborn to 14 years of age. All Whistler Babysitters are first aid certified, bonded and insured, and have gone through thorough background and reference checks to ensure that your children have the best care possible and peace of mind for you.

Babysitting Whistler

- Toll Free: 888 906 BABY
- Cellular: 604 902 BABY
- Fax: 604 894 2081
- E: [info@babysittingwhistler.com](mailto:info@babysittingwhistler.com)



PHOTO CREDIT: TOURISM WHISTLER | CHAD CHOMLACK



PHOTO CREDIT: TOURISM WHISTLER | CHAD CHOMLACK



PHOTO CREDIT: TOURISM WHISTLER | MIKE CRANE





# SHOPPING



IMAGE: 3 SINGING BIRDS

## SHOPPING AT FAIRMONT CHATEAU WHISTLER

Browse the variety of Whistler shopping outlets conveniently located on the concourse level at Fairmont Chateau Whistler resort.

### OPEN COUNTRY

Open Country is a men's and women's designer boutique located on the Fairmont lobby level across from The Mallard Lounge. Offering men's and women's clothing and footwear for all your Whistler needs. Day to evening, the wardrobe specialists in Open Country will introduce you to featured Canadian brands and brands from around the globe. Forgot your swimsuit, tie? We have you covered in Open Country. Open 9 am to 9 pm daily. Telephone: 604 938 9268

### MOUNTAIN GALLERIES

Celebrating Canadian artists in the mediums of oil, watercolor, glass, metal, ceramic and many more, Mountain Galleries presents a vibrant collection.

Telephone: 604 935 1862 | Website: [mountaingalleries.com](http://mountaingalleries.com)

### SNOWFLAKE

Snowflake showcases Canadian made or designed outerwear and accessories in cashmere, wool, leather, shearling and fur. The unique collection of scarves, hats, gloves, boots, and bags mix and match with the wonderful selection of capes, shawls, jackets and coats. Whether you are looking for a gift to last, or a treasure forever, Snowflake is the place to shop every day of the year.

Friendly, knowledgeable staff will be happy to ship your purchases worldwide.

Telephone: 604 938 2019 | Website: [snowflakecanada.com](http://snowflakecanada.com)

### KEIR FINE JEWELLERY

Locally owned and operated, with two locations in Whistler, Keir Fine Jewellery features Canadian diamonds and amazing designers, seeking out unusual, unique pieces from around the world as well as stunning local designs.

Telephone: 604-962-2944 | Website: [keirfinejewellery.com](http://keirfinejewellery.com)

### 3 SINGING BIRDS

3 Singing Birds is a gathering of small design companies that make beautiful products with a mindful and fair trade philosophy. Personally sourced from across the globe, with an emphasis on the creativity and unique lifestyle of the Pacific Northwest region.

Telephone: 604-935-0167 | Website: [3singingbirds.com](http://3singingbirds.com)

## ALSO LOCATED ON THE LOWER LEVELS AT THE FAIRMONT CHATEAU WHISTLER (NEAR PORTOBELLO)

### MOUNTAIN ADVENTURE CENTRE

Among the premier ski shops in Whistler, Canada, Mountain Adventure Centre is a high performance rental location featuring 1600 new Hi-Performance Skis and 600 New Hi-Performance Snowboards. In the summer months, Mountain Adventure Centre is open 9:00 am - 5:00 pm for bike rentals.

### THE ADVENTURE GROUP BOOKING DESK

The Adventure Group will help create your most unforgettable Whistler holiday with a wide variety of outdoor recreational activities including ATV, rafting and zipling tours in the summer months.

Telephone: 604 932 0646





# PAMPERED PUPS



## YOUR FURRY FRIENDS ARE WELCOME!

Our Fairmont family welcomes you and your special, tail-wagging family member to beautiful Whistler. If there is anything we can do to enhance your stay with us, please don't hesitate to let us know. Let the adventure begin!

### PET STAY BENEFITS:

- Comfort pet amenity (comfy dog bed, water/food bowl, selection of kibble)
- Complimentary scheduled group adventure hikes

### FEEL PAMPERED

**Private walks** - \$35 per hourly surcharge (operated by Fairmont Chateau Whistler dog walkers)

**Grooming** - service provided by Shampoooch. To make an appointment, please dial 'O' for Royal Service.

We offer a selection of pet amenities including Auntie Kim's Better Bickie's organic dog snacks, X-treme Organic Paw Balm, and Huxley & Kent squeaker toys. Dial 'O' for Royal Service for assistance.

### WHISTLER PET ADVENTURES

#### DOG FRIENDLY PARKS & BEACHES

- There are parks in Whistler that are great for off leash play between 8:00 p.m. - 10:00 a.m. Dogs are required to stay off the sandy beaches and their owners are required to pick up after their dogs.

#### OFF LEASH PLAY AREAS

- Rainbow Park
- Bayley Park
- Alpha Lake Park
- Meadow Park
- Spruce Grove and Meadow Park Ball Fields (inside fenced areas only have been designated official unrestricted off-leash areas ONLY when fields is not in use)

#### CANINE COVE & BARKING BAY

- Both Lost Lake and Rainbow Park have areas where dogs are welcome 24/7 to swim, dig and fetch with their fellow canines.

### HOTEL PET STAY

A charge of \$50.00 per night plus taxes (to a maximum of \$100) applies to all pets and will be added to your guestroom for deep cleaning services.

- A \$75 removal fee will be applied to your guest room should your dog be removed due to excessive noise.
- Due to health regulations pets are not allowed in any of the hotel restaurants, on the Health Club pool deck or in the Fairmont Gold Lounge.
- Guests are liable for any damages and or repairs other than normal wear and tear that may occur. Any noise complaints that result in refunds to other guests will be charged to the guest room with the pet.
- The Resort Municipality of Whistler bylaws require that dogs must be leashed throughout the Village. Off leash areas are available and we ask you to be mindful of the resident wildlife (including bear, deer, and coyotes).
- Additional supplies, such as baggies, dog beds, etc., are available through Royal Service by dialing 'O'.





## ADDITIONAL ACTIVITIES



### LOOKING FOR MORE IDEAS?

- Check out the 'Salish Stroll', a connecting pathway and ethnobotanical trail from the hotel to the Squamish Lil'wat Cultural Centre (SLCC). The new path provides an interpretive journey where you can immerse yourself completely in the arts, culture and heritage of the area's First Nations.
- Take a dip and explore one of the beautiful lakes in Whistler
- Relax and unwind during one of our twice daily yoga classes
- Take a shuttle to Whistler Village to check out all there is to offer (available year-round for all Fairmont guests with select drop-off and pick-up points)
- Game on! A collection of board games and backyard adventure necessities (Croquet equipment, soccer balls, Frisbees, Bocce) are available from the Health Club as well as a lending library of books
- Meander through the Whistler Farmers' Market Sunday afternoons right outside the hotel
- Find out more about Whistler's exciting nightlife
- Take in an outdoor concert happening throughout the summer during Whistler's Summer Concert Series

### CONNECT WITH US!

The Concierge desk is located in the main lobby, and our passionate and knowledgeable attendants are ready to advise and assist you with your activity, dining and transportation arrangements. If you would like additional information before you arrive, please call +1 604 938 2006 or email [cwr.concierge@fairmont.com](mailto:cwr.concierge@fairmont.com). Our friendly and knowledgeable team would be delighted to assist you. It is our pleasure to help make your stay with us as seamless and outstanding as possible.

Warm regards,  
The Concierge Team at Fairmont Chateau Whistler

#### CONCIERGE TEAM

T 604 938 2006

[CWR.concierge@fairmont.com](mailto:CWR.concierge@fairmont.com)

#### FAIRMONT GOLD CONCIERGE TEAM

T 604 938 2072

[CWR.fairmontgold@fairmont.com](mailto:CWR.fairmontgold@fairmont.com)





# WE CAN'T WAIT TO SEE YOU SOON!

---

GET SOCIAL WITH US! #WEAREWHISTLER

 FairmontChateauWhistler

 @FairmontWhistlr

 @FairmontWhistlr

4599 Chateau Boulevard

Whistler, British Columbia

Canada V0N 1B4

TEL +1 604 938 8000

DINING [whistler.restaurants@fairmont.com](mailto:whistler.restaurants@fairmont.com)

CONCIERGE [cwr.concierge@fairmont.com](mailto:cwr.concierge@fairmont.com)

[FAIRMONT.COM/WHISTLER](https://fairmont.com/whistler)

*Fairmont*  
CHATEAU WHISTLER