



Make Your Network Mobile

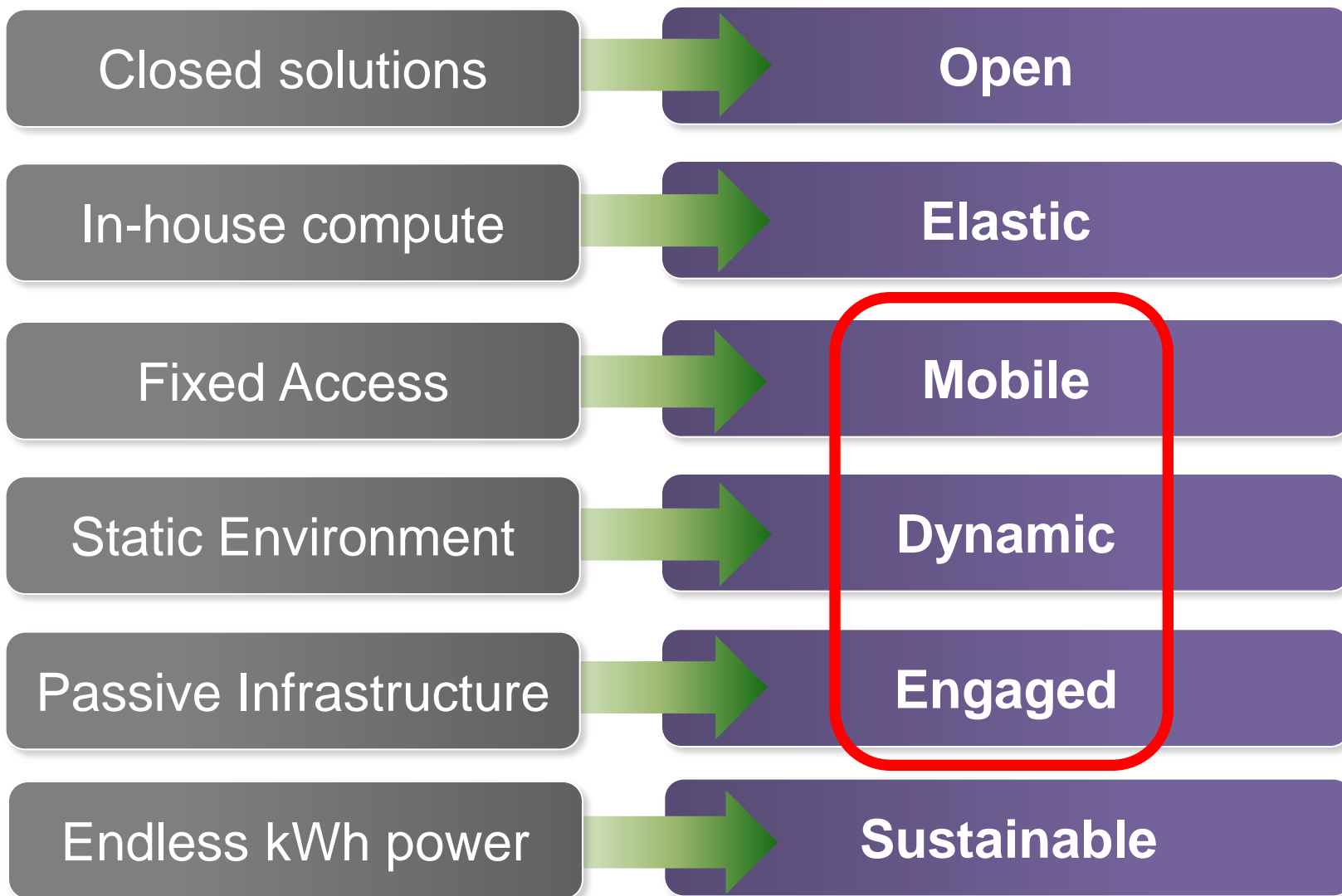


The Aware Network

June 2011

Paul Hooper

CIO's Requirements are Evolving



Aware : In the Data Center

Open

Elastic

Mobile

Dynamic

Engaged

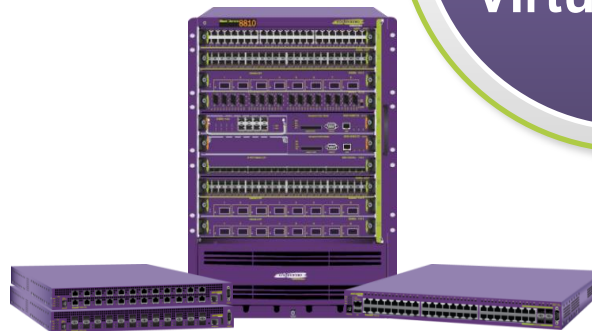
Sustainable

Dynamic Solutions

Networking that has transitioned from static to dynamic

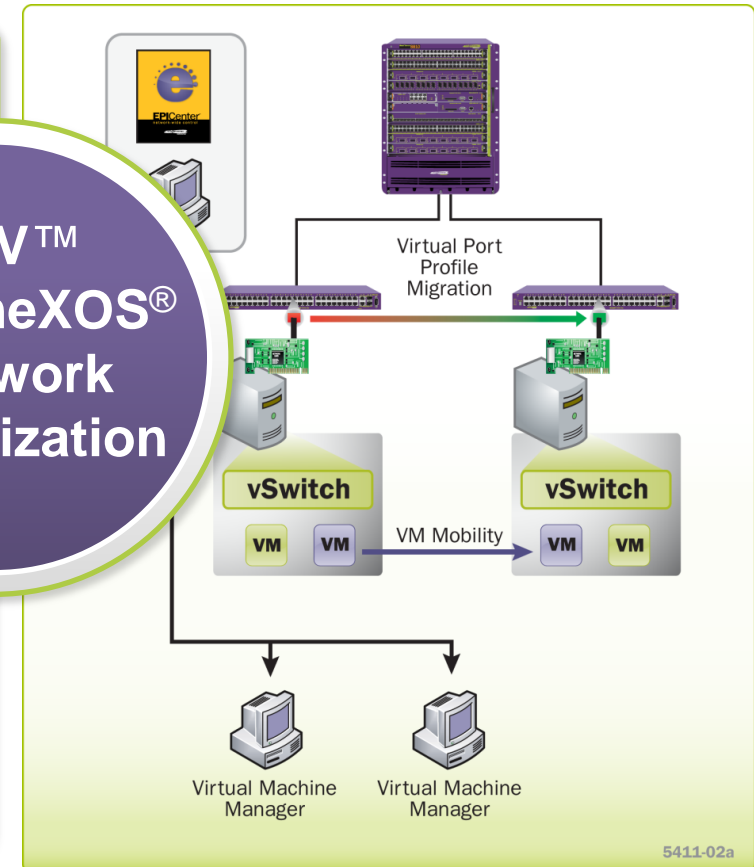


Data Center



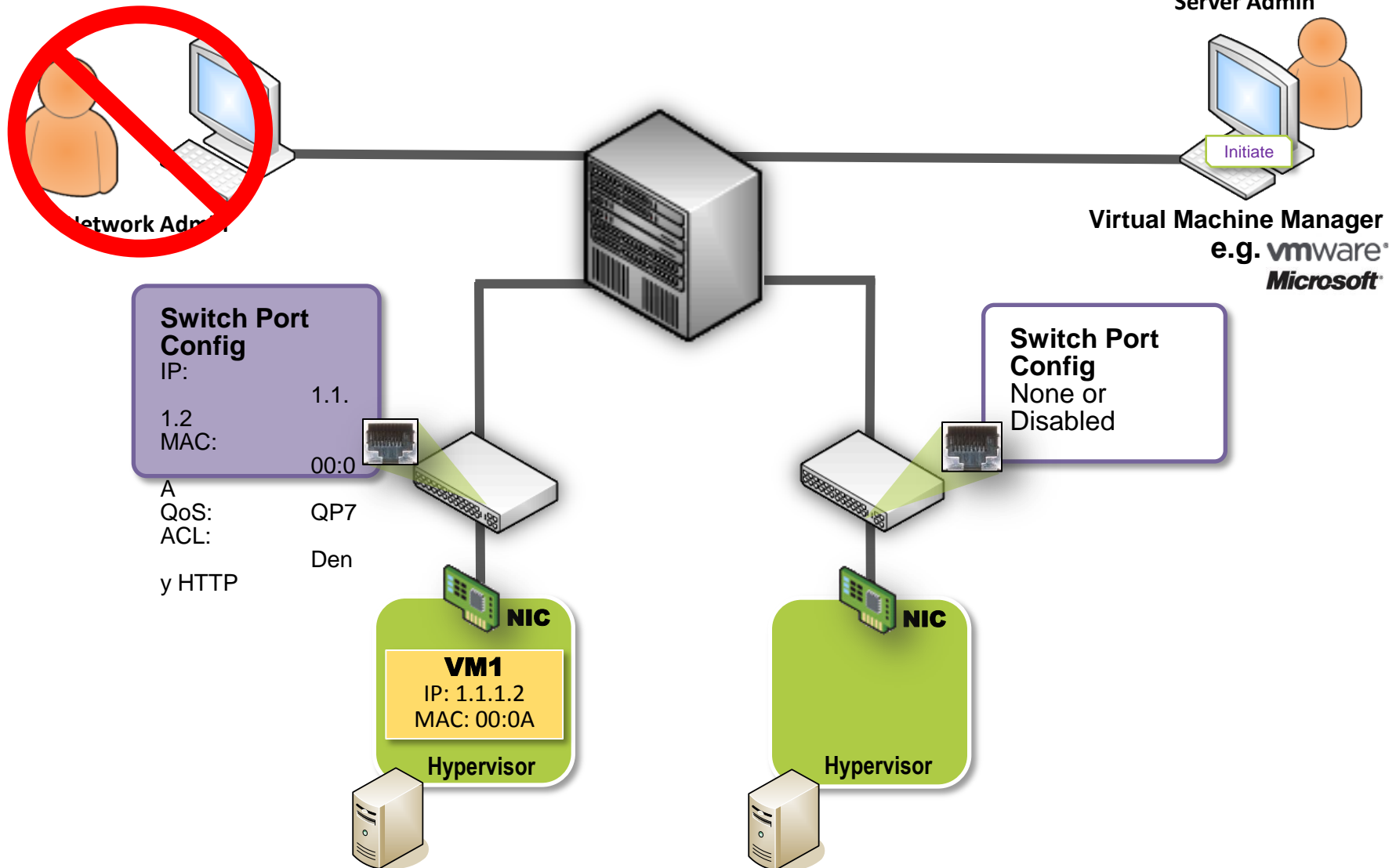
Robust Product Portfolio

**XNV™
ExtremeXOS®
Network
Virtualization**



Extreme XNV : Virtualization Aware

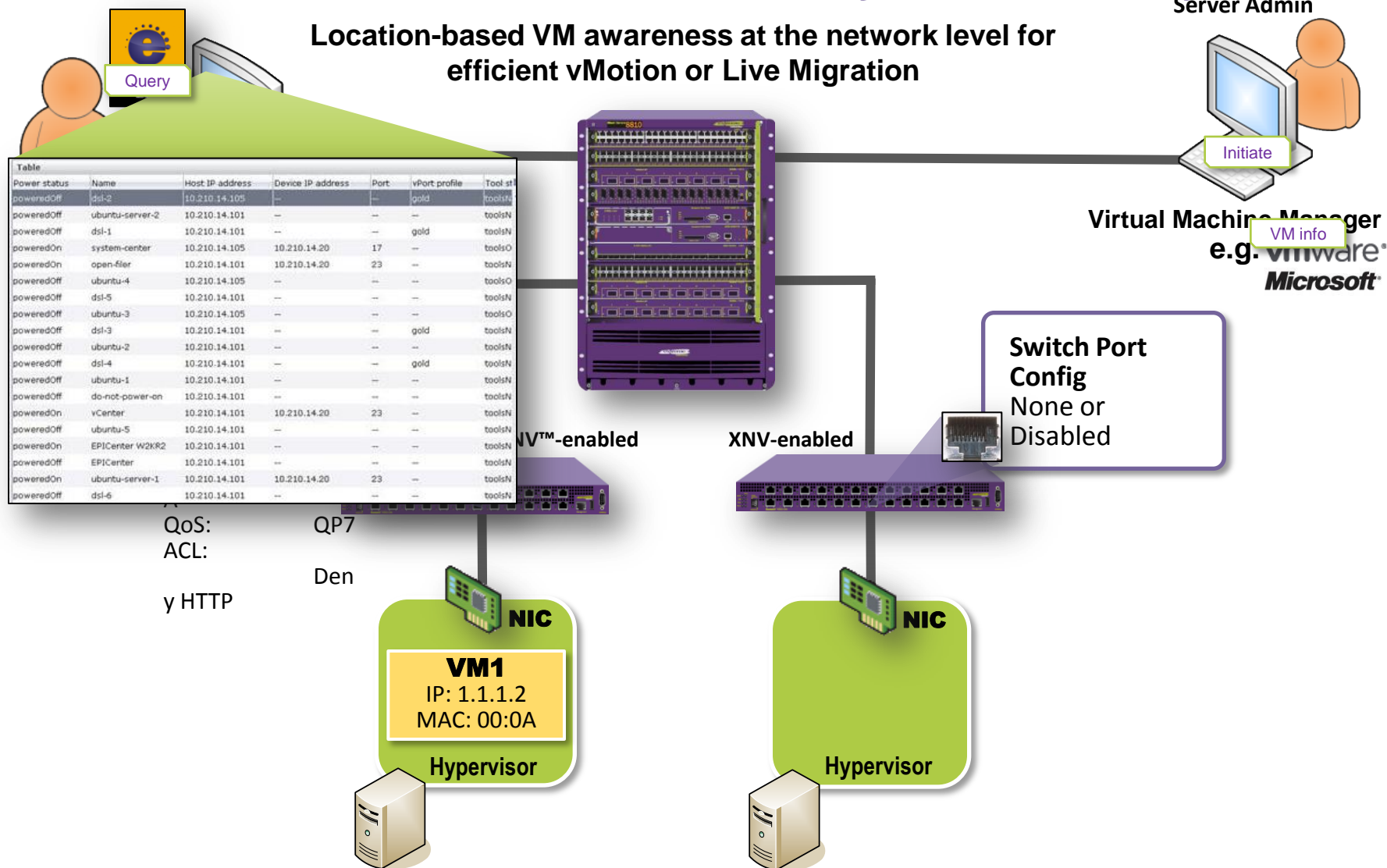
VM Mobility Issues Today Network has Zero visibility into VM Lifecycle



Extreme XNV : Virtualization Aware



Extreme Networks: XNV Network Visibility into VM Lifecycle



Aware : At the “User” Edge

Open

Elastic

Mobile

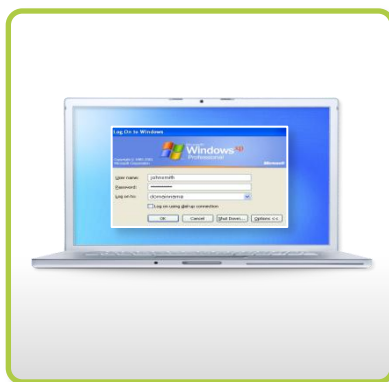
Dynamic

Engaged

Sustainable

Engaged
Technology

A network that is aware of user,
device and application



| Role | Internet | Intranet | Mail | CRM/Database | VLAN |
|-----------------|----------|----------|------|--------------|---------|
| Unauthenticated | Yes | No | No | No | Default |
| Contractor | Yes | Yes | No | No | Default |
| Employee | Yes | Yes | Yes | Yes | Default |



User: John
Role: Employee
Resource Access = Permit All



User: Alice
Role: Contractor
Resource Access = Deny Mail and CRM



User: Bob
Role: Unauthenticated
Resource Access = Internet Only

Active Directory Server

RADIUS Server

LDAP Server

Internet

ERP Applications
& Data

Customer Data

Inventory
Applications

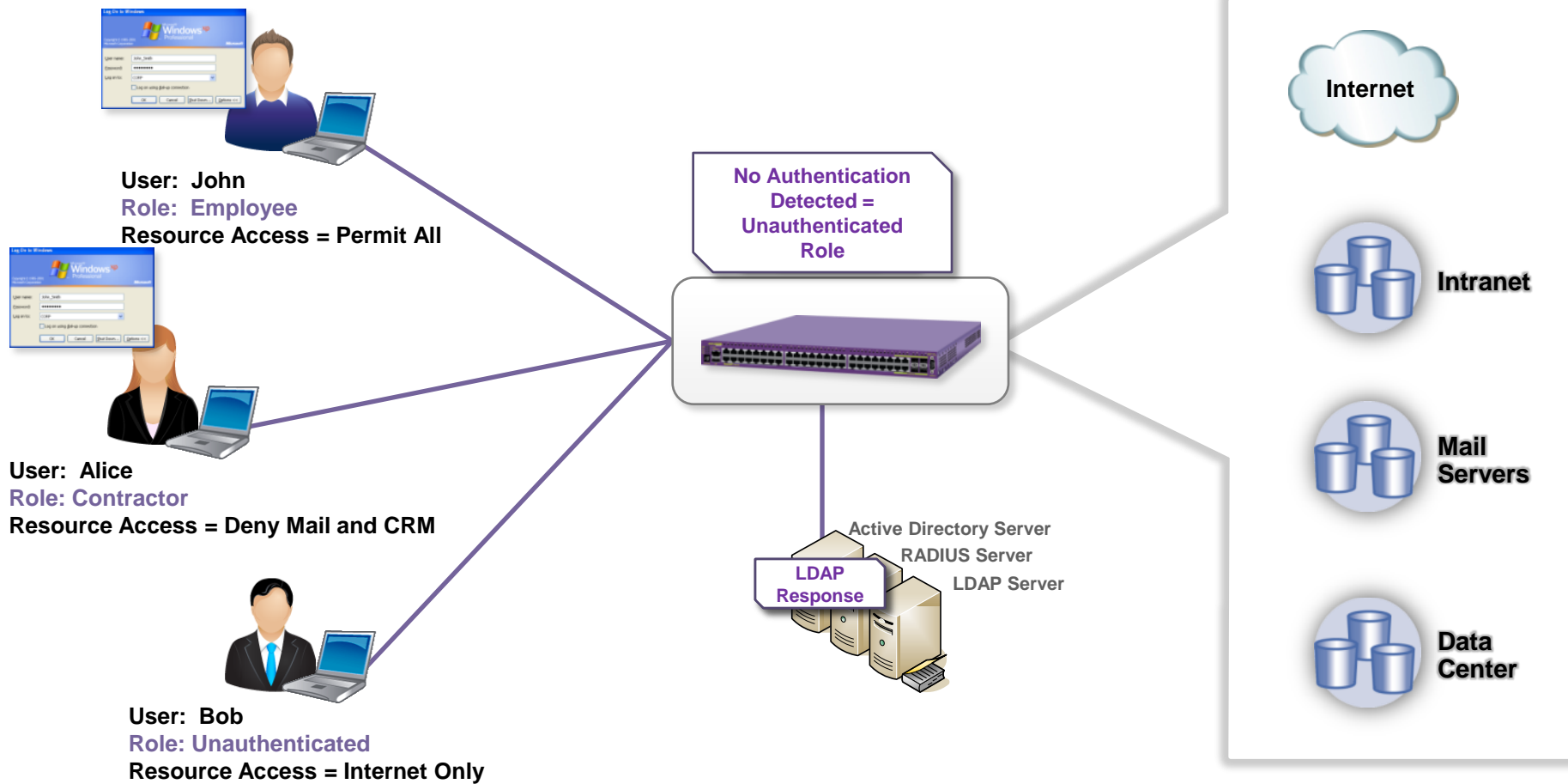
5493-01

Extreme IDM : Identity Aware

Role Derivation

- Users are assigned to a “role” based on their attributes (e.g. job function, location, etc...)
- Roles contains dynamic policies that control access to network resources regardless location

| Role | Internet | Intranet | Mail | CRM/Database | VLAN |
|-----------------|----------|----------|------|--------------|---------|
| Unauthenticated | Yes | No | No | No | Default |
| Contractor | Yes | Yes | No | No | Default |
| Employee | Yes | Yes | Yes | Yes | Default |

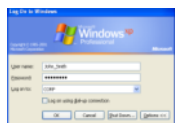


Extreme IDM : Identity Aware

Role Derivation

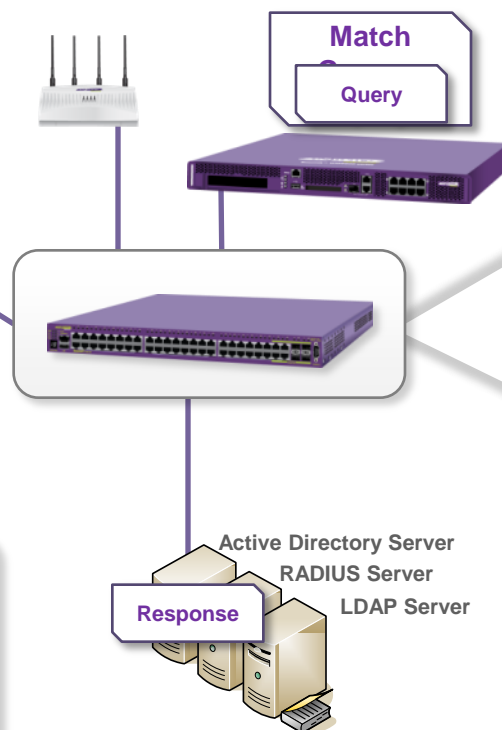
- Users are assigned to a “role” based on their attributes (e.g. job function, location, etc...)
- Roles contains dynamic policies that control access to network resources regardless location

| Role | Internet | Intranet | Mail | CRM/Database | VLAN |
|-----------------|----------|----------|------|--------------|---------|
| Unauthenticated | Yes | No | No | No | Default |
| Contractor | Yes | Yes | No | No | Default |
| Employee | Yes | Yes | Yes | Yes | Default |



User: John
Role: Employee
Resource Access = Permit All

**Identity-based and role-based
access regardless
of location, wired, or wireless!
Not dependent on VLANs!**



Aware : At the “Device” Edge

Preparation

Operation

1 Create enterprise edge policies

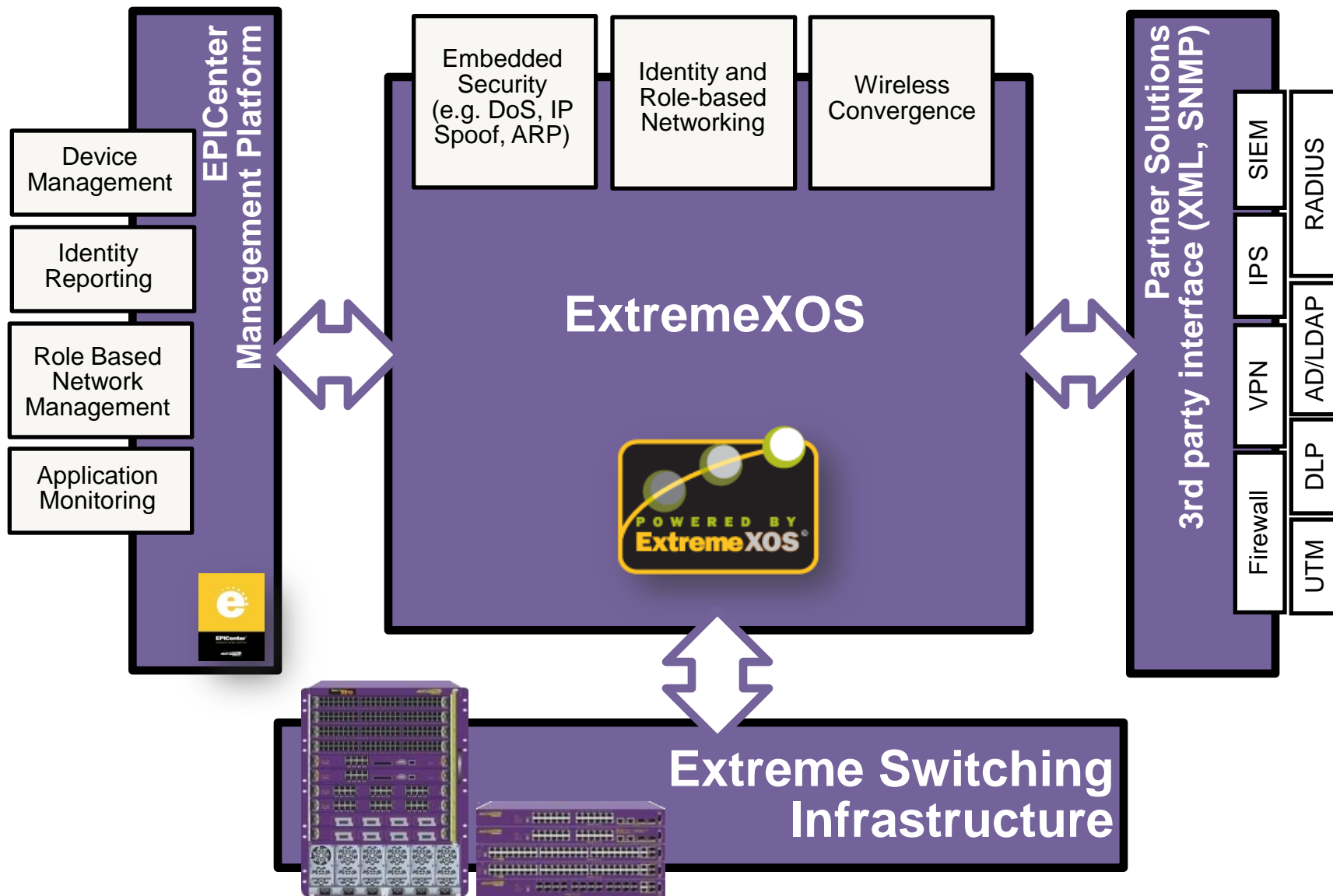
2 Deploy scripted device-identity detection and response policies to EXOS powered switches

3 **Event:** Connect, disconnect, time of day ... any 'log' event

4 **Response:** EXOS trigger to execute scripted policy and enforce change or reaction.



Aware : At the core of the Infrastructure



The Pervasive Aware Network





Make Your Network Mobile

