

THE SECURITY STANDARD

Adapting Enterprise Security to New Realities, Threats and Endpoints

September 10-11, 2012 | New York Marriott at the Brooklyn Bridge | New York City

Produced by

CSO

FutureTALKS

CSO Magazine

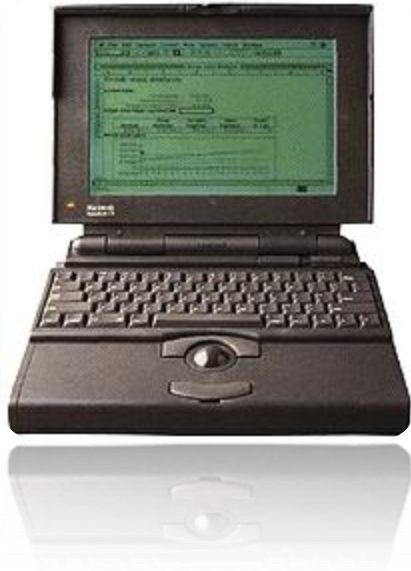
The Future of the Cyber Security Organization

Derek Benz, CSO

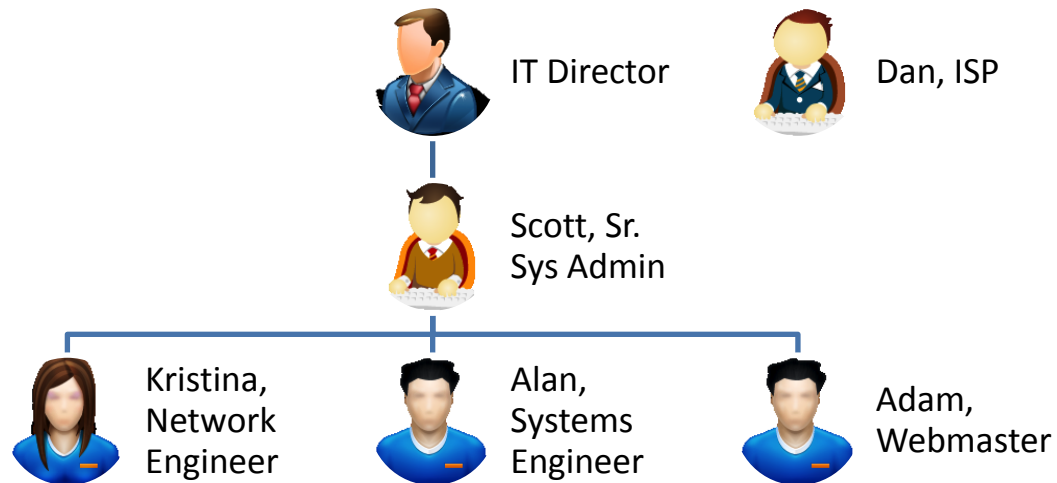
9/04/2012

Some Observations....

3-5 Employees



1995

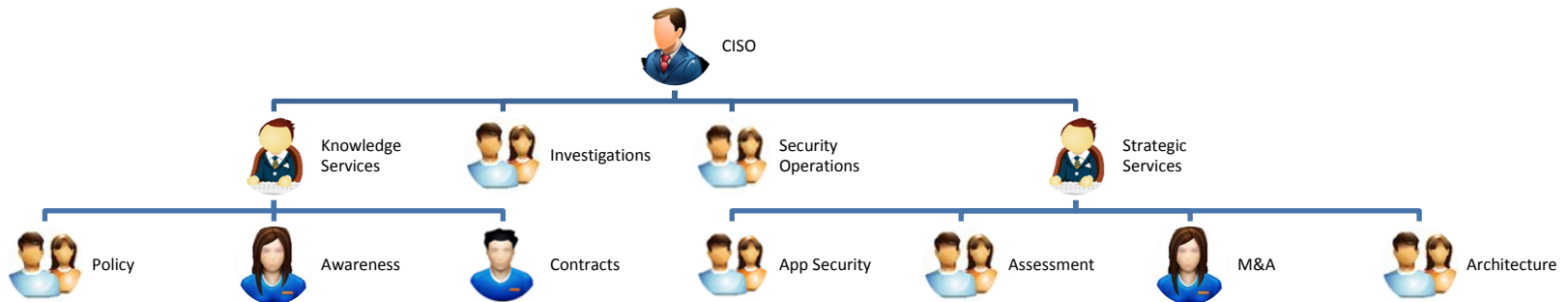


Job: Warez pirates, theft of services

50-60 Employees



Today



Job: Protect IP & Network; Incident Response, Protect users from themselves

20 Employees



Tomorrow

Assumptions

Economic pressure continues

- Rooftop consolidation
- Sustainability
- Rise of Hoteling & mobile workforce
- Travel restrictions may not improve
- Reduction in services: focus on the core

Leaning of workforce continues

- Your direct staff will get smaller
- Headcount: diversified (Age, Gender, and HGR)
- Outsource expensive fixed elements first
- Matrixing will be the rule
- Security automation accelerates

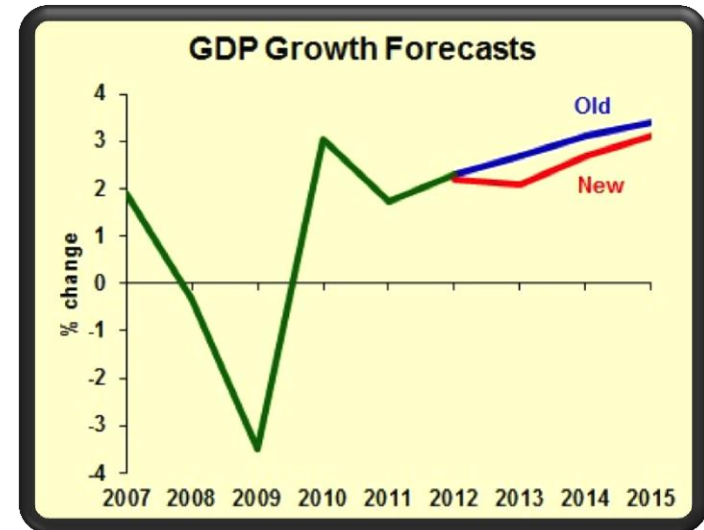
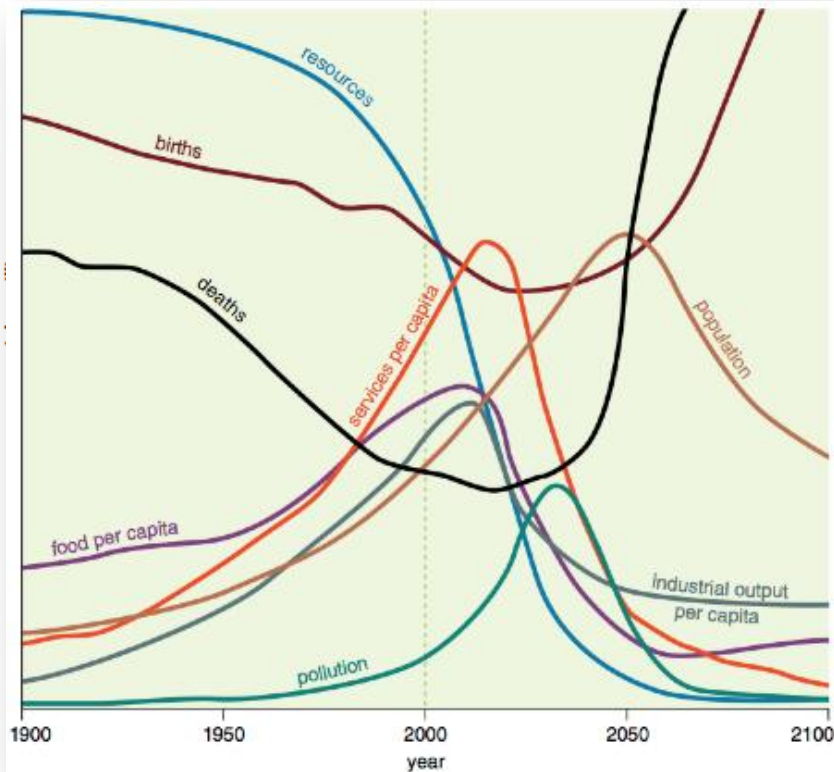
Threats increase in complexity

- And so will regulations
- Keeping pace will be expensive
- Outsourcing services is the rule
- Security follows data to the Cloud

Increase customer focus

- Human factors and customer experience key
- Must be agile and resilient
- Mobility will be demanded; BYOD

Economic pressure continues



- Rooftop consolidation
- Sustainability
- Rise of Hoteling & mobile workforce
- Travel restrictions may not improve
- Reduction in services: focus on the core

Leaning of workforce continues

The Millennials

- Always-on vs. work/life balance
- Job flexibility required to attract and retain millennials
- Develop a culture of flexible learning and opportunities
- Baby Boomers retiring fast. How to transfer knowledge?

The Workforce

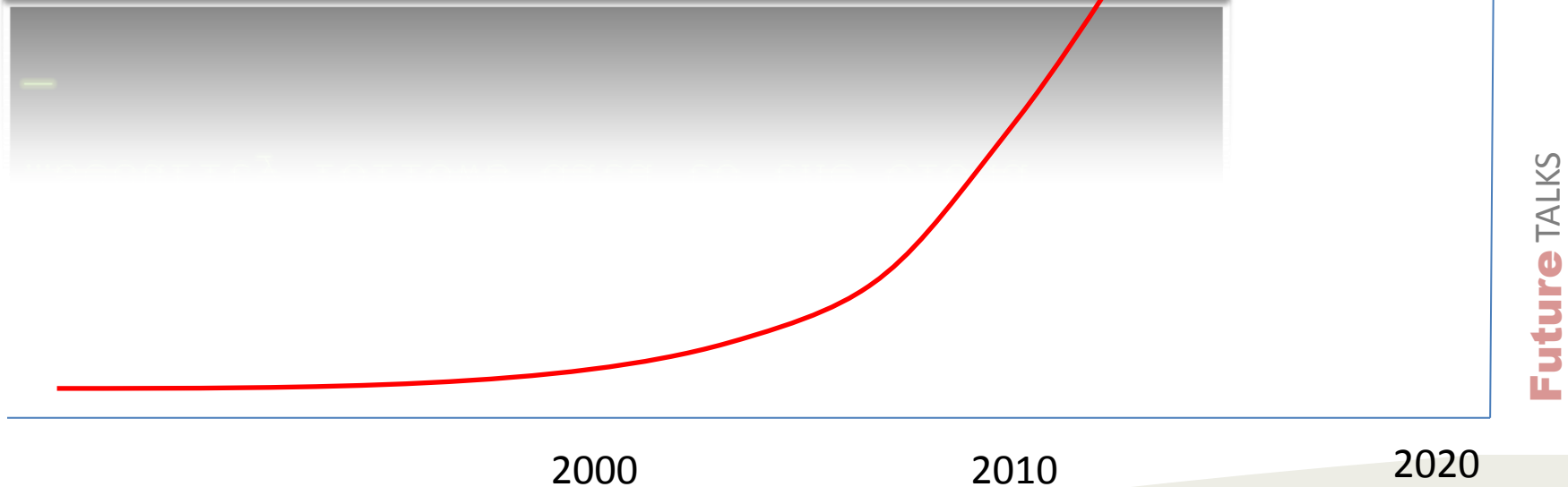
- Middle management will thin, matrix increases.
- Employees redefined: rise of the independent workers
- Teleworking will be expected by your workers.

Leaning of workforce continues

- Your direct staff will get smaller
- Headcount: diversified (Age, Gender, and HGR)
- Matrixing will be the rule
- Security automation accelerates

Threats increase in complexity & volume

```
Root#  
...And so will regulations  
...Keeping pace will be expensive  
...Outsourcing services will be the rule  
...Security follows data to the Cloud  
—
```



Increase customer focus

Human factors and customer experience key

Must be agile and resilient

Mobility will be demanded; BYOD



In short

Change is coming

Veterans will retire; the new generation will be increasingly independent and work from anywhere.

The security function must be focused on core services that enable agility, innovation and resilience.

What do you Think?

THE SECURITY STANDARD

Adapting Enterprise Security to New Realities, Threats and Endpoints

September 10-11, 2012 | New York Marriott at the Brooklyn Bridge | New York City

Produced by

CSO