



Session 610: Energy Management –
A Case Study Approach

Erika Lontoc
Manager, Residential and New Construction Marketing
Enbridge Gas Distribution

Myfanwy Parry
Housing Services Corporation

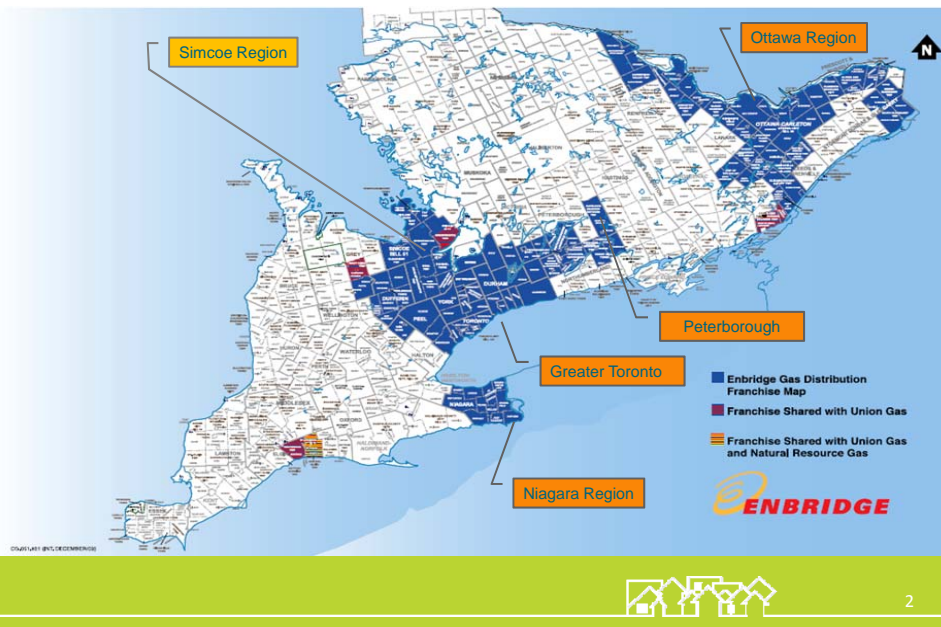


About Enbridge Gas

- Regulated utility
- ~ 2 million residential, commercial and industrial customers
- 160+ years of natural gas distribution experience
- Almost 20 years of energy efficiency programming leadership
- Progressively delivering energy efficiency programs focused on low income consumers for 10 years, and counting



Enbridge Gas Service Area



Program Offerings for Social and Assisted Housing

- Home Winterproofing Program
- Multiresidential Program
- Program Delivery Agent:
GLOBE/Housing Services Corp.



Home Winterproofing Program





• Reduce energy use • Lower energy bills
• Free of charge

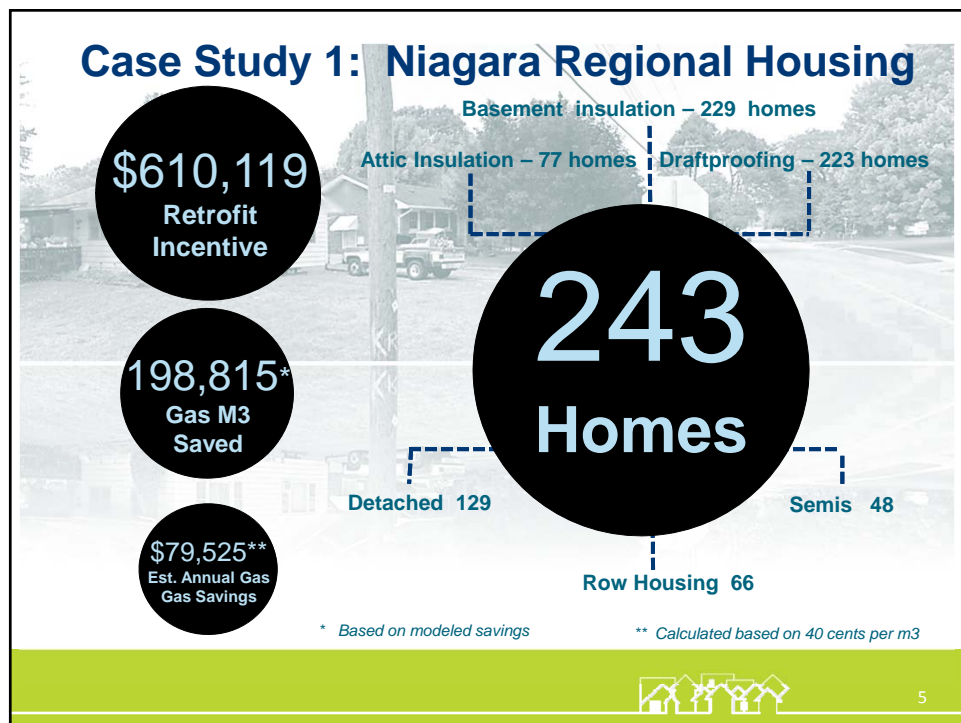


1. Energy Audit 2. Upgrades 3. Follow-up

[Enbridge Gas Distribution Weatherization Program Overview – YouTube](#)



4



Multiresidential Program for Social Housing

Incentives & Benefits

Enbridge Gas Distribution's Multi-Residential Incentive Program offers financial incentives to social housing providers (owners and property managers) who undertake energy audits or make capital improvements that result in reduced gas consumption.



Contact a GLOBE representative at 1.888.388.4433 x324 to find out more

Energy Audits

If you conduct an energy audit, you're eligible to receive either half the cost of the energy audit up to \$5,000 or \$0.01/m² of gas consumed in the most recent calendar year.

Capital Improvements*

Replacing heating and ventilation systems or equipment
Fixed dollar incentives that start at \$1,000 are available for smaller-sized condensing or high-efficiency boilers, energy recovery ventilation and heat recovery ventilation systems.^{1,2}

Larger, energy-saving capital improvements

Custom incentives for retrofits such as boilers, make-up air units, and building envelope upgrades; incentives are calculated on projected first year's natural gas savings at the rate of \$0.40/m² saved up to a \$100,000 limit.^{3,4}

Low-flow showerhead replacements

Covers the supply and installation of energy-efficient showerheads (manufacturer-specified flow rate of 1.5 gallons per minute or less) to replace standard showerheads (flow rate of 2.5 gallons per minute or greater).⁵

Strategic Energy Management & Support

Social housing providers in Enbridge's Multi-Residential program are also eligible for additional ways to reduce costs:



Improve building performance via HSC's Utility Management Program (UMP)

UMP provides personalized quarterly reports on your building's utility performance over time. You also get access to services to help you reduce your utility costs and maximize your investments in energy-saving capital projects. The UMP program is offered by HSC to social housing providers independent of Enbridge. However, as a participant in the Enbridge multi-residential program, you can choose to receive reports for one year.

Access additional incentives

Enbridge offers a special financial incentive to select UMP participants for any operational improvements that result in reduced natural gas consumption over a 12-month period. Your UMP reports will track these savings for you, enabling you to receive an incentive of \$0.20/m² of natural gas saved during this period.

Enbridge Social Housing Video

- **Energy Audits**
 - Energy audit incentive
- **Implementation Incentives**
 - 40 cents for custom projects
 - Fixed dollar values for prescriptive measures
- **Benchmarking, Monitoring and Targeting**
 - Enbridge-UMP
- **Special promotional offers**
 - Audit to Action
 - Direct Install: Heat Reflector Panels
- **Resident Engagement**
 - Community Champions

Case Study 2: Micah Homes NP Housing Corp.

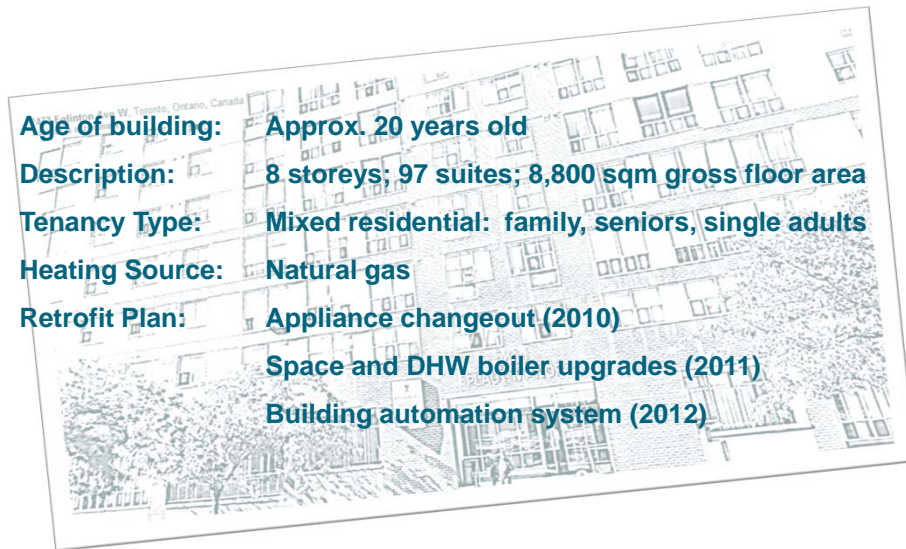
Age of building: Approx. 20 years old

Description: 8 storeys; 97 suites; 8,800 sqm gross floor area

Tenancy Type: Mixed residential: family, seniors, single adults

Heating Source: Natural gas

Retrofit Plan: Appliance changeout (2010)
Space and DHW boiler upgrades (2011)
Building automation system (2012)



Micah Homes NP Housing Corp.

Retrofit Plan:

Appliance changeout (2010)

Space and DHW boiler upgrades (2011)

Building automation system (2012)

Incremental Cost: \$41,660

Financial Incentive: \$7,672

Estimated Annual Gas Savings m³: 41,087 m³

Estimated Annual Gas Savings \$: \$12,626*

2013 Savings vs. 2010 Baselines 21.4%

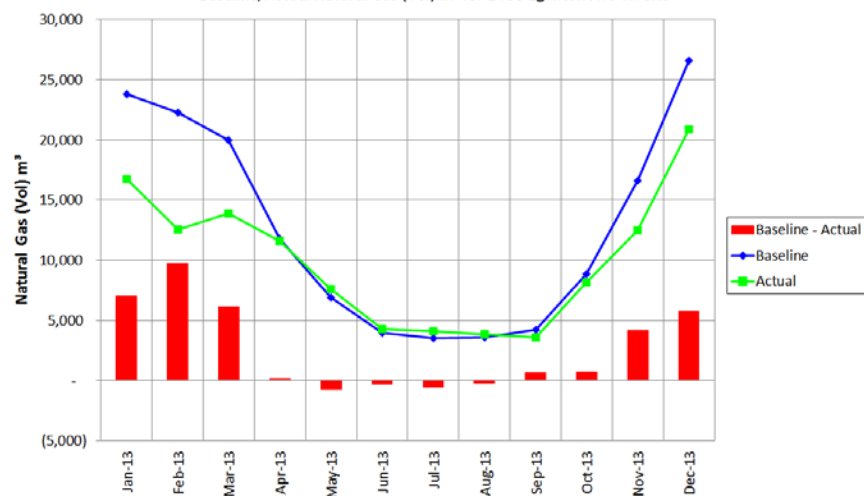
* Based on 30 cents per m³



8

Micah Homes NP Housing Corp.

Baseline/Actual Natural Gas (Vol) m³ for 2480 Eglinton Ave W. Site

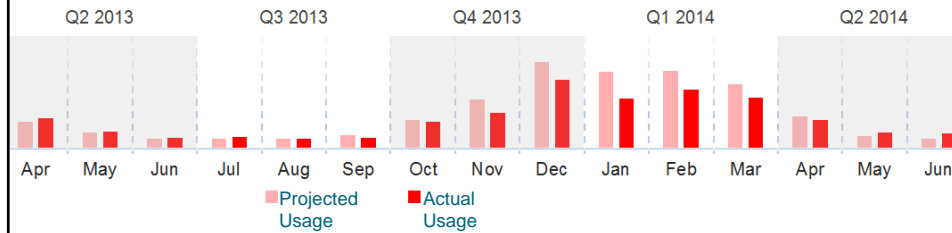


- Projected Usage = Baseline Period of 2010, adjusted to current weather
- Baseline Period vs 2013 Actual: 21.4% savings



9

Micah Homes NP Housing Corp.



- Projected vs Actual Usage for past 5 quarters: **better than projected**
- Therefore:* 2013 Savings AND last 5 quarter comparison verify retrofits are working!



10

Case Study 2: Project Esperance/Project Hope Corp.

Age of building:	Approx. 21 years old
Description:	8 storeys; 111 suites; 10,400 sqm gross floor area
Tenancy Type:	One, two and three bedroom apartments including some fully accessible units. Women who are survivors of violence and their children, including elderly and disabled women
Heating Source:	Natural gas
Retrofit Plan:	Space and DHW boiler; MUA system upgrades (2011) Solar water thermal system - REI funded (2012)



11

Project Esperance/Project Hope Corp.

Retrofit Plan:	Space and DHW boiler; MUA system upgrades (2011) Solar water thermal system - REI funded (2012)
Incremental Cost:	\$69,474*
Financial Incentive:	\$10,089*
Estimated Annual Gas Savings m3:	55,546 m3*
Estimated Annual Gas Savings \$:	\$16,664**
2013 Savings vs. 2010 Baselines	12.9%

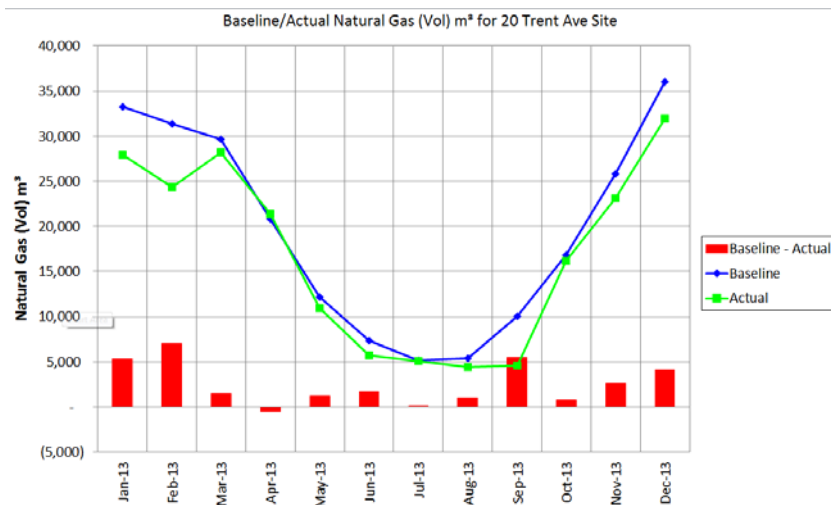
* Based on retrofits applied under the Enbridge incentive program only

** Assumes 30 cents per m3



12

Project Esperance/Project Hope Corp.

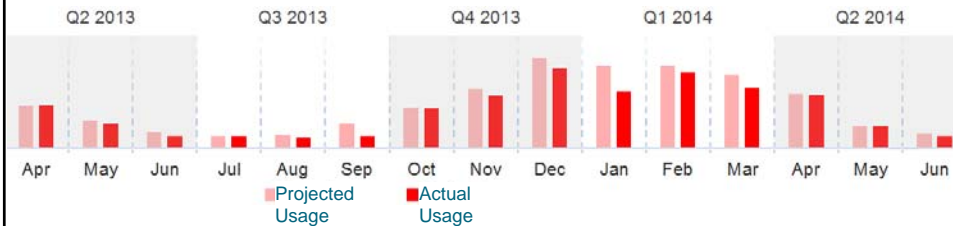


- Projected Usage = Baseline Period of 2010, adjusted to current weather
- Baseline Period vs 2013 Actual: **12.9% savings**



13

Project Esperance/Project Hope Corp.



- Projected vs Actual past 5 quarters: **better than projected**
- *Therefore: 2013 Savings AND last 5 quarter comparison verify retrofits are working!*



14

Thank you!

Erika Lontoc
Manager, Residential and New Construction Marketing
Market Development
ENBRIDGE GAS DISTRIBUTION INC.
TEL: 416-495-5656 | FAX: 416-753-6607
E: erika.lontoc@enbridge.com | W: www.enbridgegas.com

Myfanwy Parry
Housing Services Corporation
TEL: 416-594-9325 ext. 308
E: mparry@hscorp.ca | W: www.hscorp.ca



15