



Session #103: Approaches to Roaches

Richard Grotsch, Manager
Integrated Pest Management
Toronto Community Housing
Corp



ONPHA

Ontario
Non-Profit Housing
Association

Introduction

Richard Grotsch, Manager,
Integrated Pest Management
Toronto Community Housing Corp



What is a Pest??

- Competes with human, Domestic Animals (pets) or desirable plants for food and water
- Can injure humans, animals, plants, possessions or structures
- Has the ability to spread disease to humans, domestic animals, wildlife or plants
- Annoys or outside of the tolerance of humans or animals



The Impact



Know your Responsibilities

The landlord:

- Is responsible for pest management throughout the building
- Must make every effort to control pests and prevent spread

The tenant:

- Must keep their unit clean (as set out in the *Residential Tenancies Act* and municipal health and safety requirements)
- Must allow the landlord to do inspections
- Must report infestations promptly
- Must prepare unit for treatment
- Must agree to treatment of their unit



Meet the Enemy



Cockroach Biology

- Broad flattened bodies with small heads
- Approximately .50" in size
- Maturity is dependant on species
- Comes from the Spanish word "Cucaracha"
- Genetically associated to the Termite
- Are believed to exist in the Carboniferous period dating back 354 -295 Years ago



Behavior

- Live in a wide range of environments
- Strong ability to adapt to their environment
- Are Primarily Nocturnal Pests
- Leave chemical trails in their feces
- Omit airborne pheromones used for mating and swarming



Health Implications

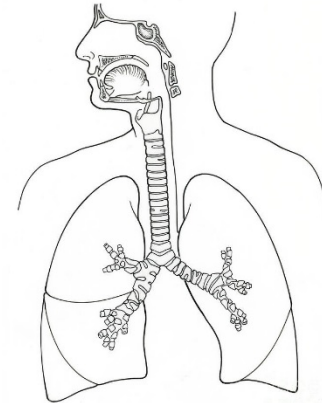
Suspected carriers of organisms causing:

- Diarrhoea
- Dysentery
- Cholera
- Leprosy
- Plague
- Thyroid fever
- Viral diseases such as poliomyelitis



Common Health Issues

- Cast Skins dry, break apart and become airborne
- Cause more serious reactions in Children with Asthma than a dust mite, dog or cat allergens
- Homes with a moderate level Cockroach infestation may contain dangerous allergen levels for those most vulnerable.



Facts

- Cockroaches can have health effects
- Are one of the most challenging pests to control
- Can live up to 6 weeks without food
- Respiration through the side of their body and therefore possible to live an extended period without their head
- Considerably fast moving making it easy to escape and migrate throughout a building



Preparation

- Empty ALL lower cupboards
- Empty ALL drawers
- Clean and Clear ALL countertops
- Pull fridge and stove out (remove kick plates)
- Remove all dishes, cutlery, pots, pans boxes and food
- Clear bathroom cupboards (specifically below sink)
- Ensure bedroom and hall closets are accessible

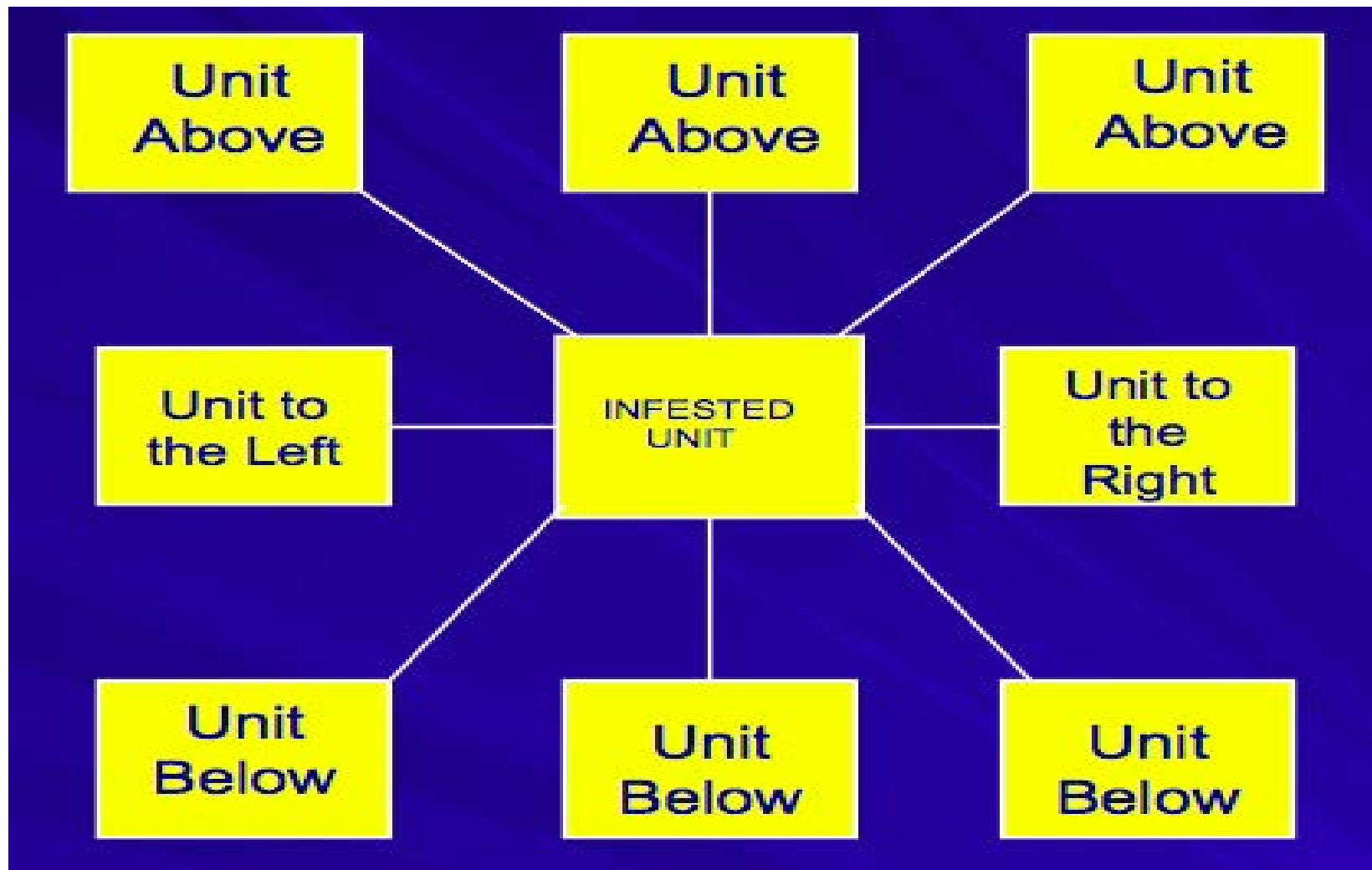


Treatment

- Flush and Vacuum Treatments
- Application of Gel Treatment to key areas
- Residual Applications as Required
- Application of Dusting Agents to Cracks, Crevices, and Voids
- Sealing of key areas including drains, and pipes



Block Inspections and Treatments



Integrated Pest Management

- Determine Acceptable Pest Levels
- Prevention
- Monitoring
- Mechanical Controls
- Biological Controls
- Pesticide use



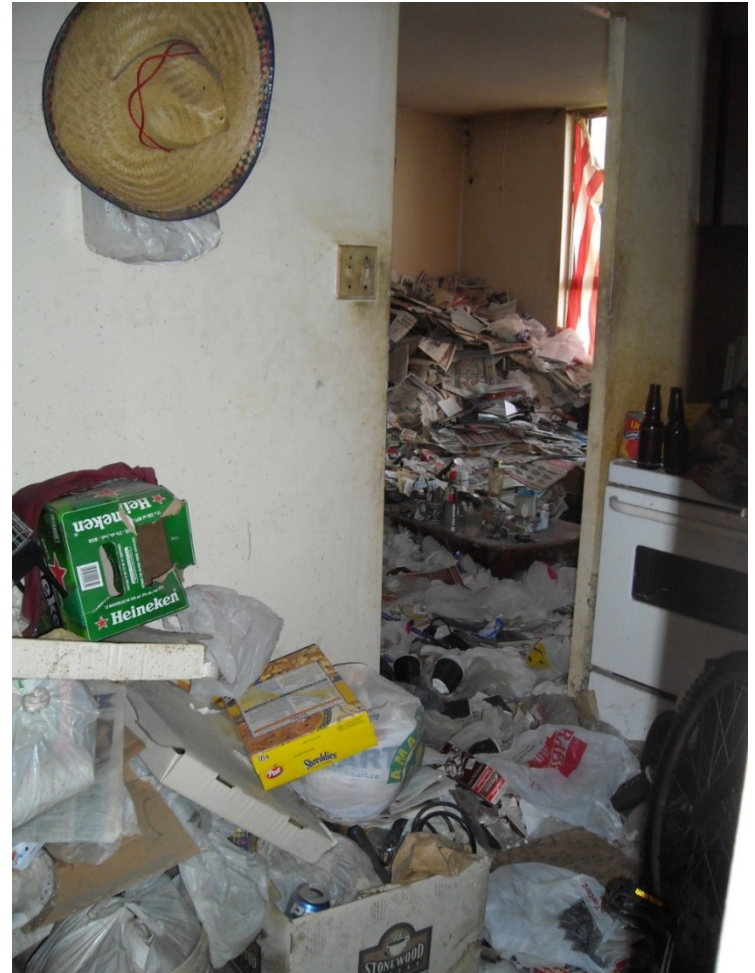
Elements of IPM

- Inspect, assess and identify
- Preparation
- Treatment
- Follow-up
- Follow-up inspection



Other Unit Conditions

- Excessive Clutter
- Hoarding
- Sanitation
- Housekeeping



Joining Forces

- What resources are available locally?
- What other resources are needed, and how can we work together to get them?



Hiring a Pest Control Firm

- Licensed Class 2 Exterminator
- Insured and Bonded
- Member of a Professional Organisation (SPMAO)
- Extensive experience in Bed Bug and various structural pests
- Provide pre inspections and detailed Scope
- Practice Principles of IPM
- Ability to provide chemical and non chemical approaches
- A vested interest in new methods and technologies



Questions??

