

Open Networking

magnus_romedahl@dell.com

Dell Networking



85%



plan to use **cloud** tools
in the next 3 years
(Gartner)

79%



experienced **security** incident
in past year that caused financial
and/or reputational impact (CP)

26Billion



of devices managed by
Internet of things (by 2020, MIT)

35ZB



Annual **data** generation by
2020 (35 trillion terabytes)
(IDC)

**Powerful
disrupters to
"IT as usual"**

90%



% of world's **data** created
in last 2 years (Microsoft)

63%



User-owned **mobile
devices** used for work (sage)

78%




say **digital transformation** will
become critical in 2 years (MIT)

79%



Use a smart phone
when **shopping** (google)





**TOUGH
DECISIONS
AHEAD**

Dell Networking innovation & thought leadership

2011

Data center chassis bottleneck

- ✓ Active Fabric
- ✓ Open Automation Framework

2012

East-west traffic optimization

- ✓ **MXL/IOA for M1000e**
- ✓ **Active Fabric Manager**

2013

Network programmability

- ✓ **SDN – a choice**
- In-rack convergence
 - ✓ **S5000/S6000 ToRs**
- Enterprise mobility
 - ✓ **Modernized campus portfolio**

2014

Choice & Open Networking

- ✓ Open Networking
- ✓ Z9500 Fabric Switch
- ✓ Active Fabric Controller

2015

Open Networking

- ✓ **Extended partners**
 - ✓ **Z9100-ON**
 - ✓ **S4048-ON**
 - ✓ **S3048-ON**
- Campus/branch
- ✓ **N1500**
 - ✓ **X-Series**

Campus/branch

✓ **N1500**

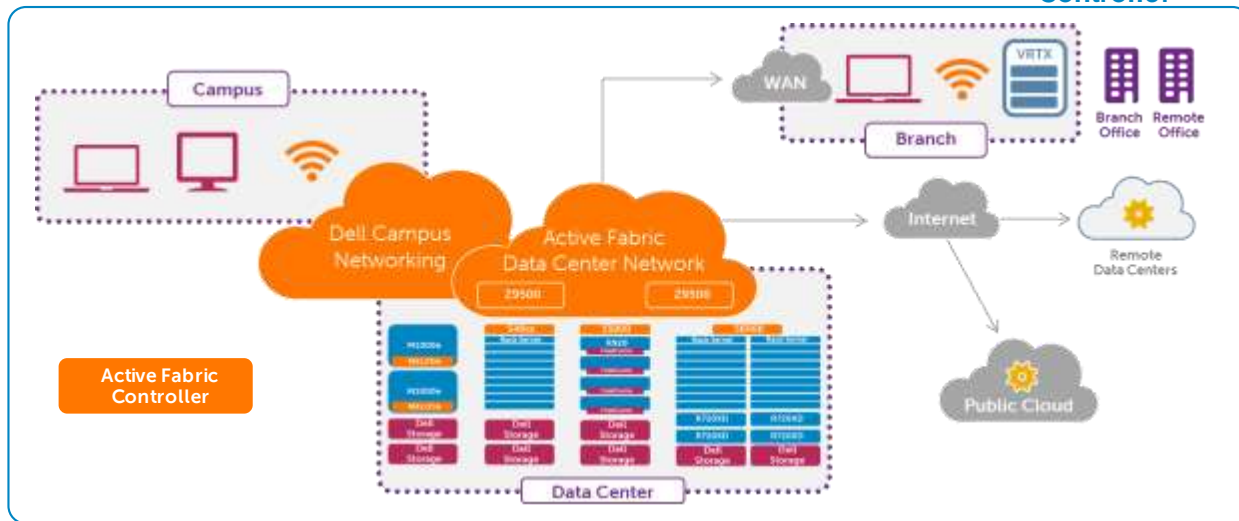
✓ **X-Series**

techday

Dell Unlocks New Era for Open Networking

silicon \wedge NGL E

Dell Goes All-in on Software-Defined Networking at #VMworld



**Network
Computing**

Dell N-Series Switches Bring OpenFlow to Campus Networks

NETWORKWORLD

Dell Dives Deeper into SDN with New Hardware and Software



Latest Gartner rating for Dell

"**Dell** has emerged as a top four player in the data center networking space measured by port shipments. It has also been the **most-innovative and most-disruptive** mainstream data center networking vendor in the market over the past 12 months."

Gartner "Vendor Rating: Dell" April 2015



Visionary furthest to the right

<http://www.dell.com/learn/us/en/uscorp1/analyst-relations-research-and-reports>

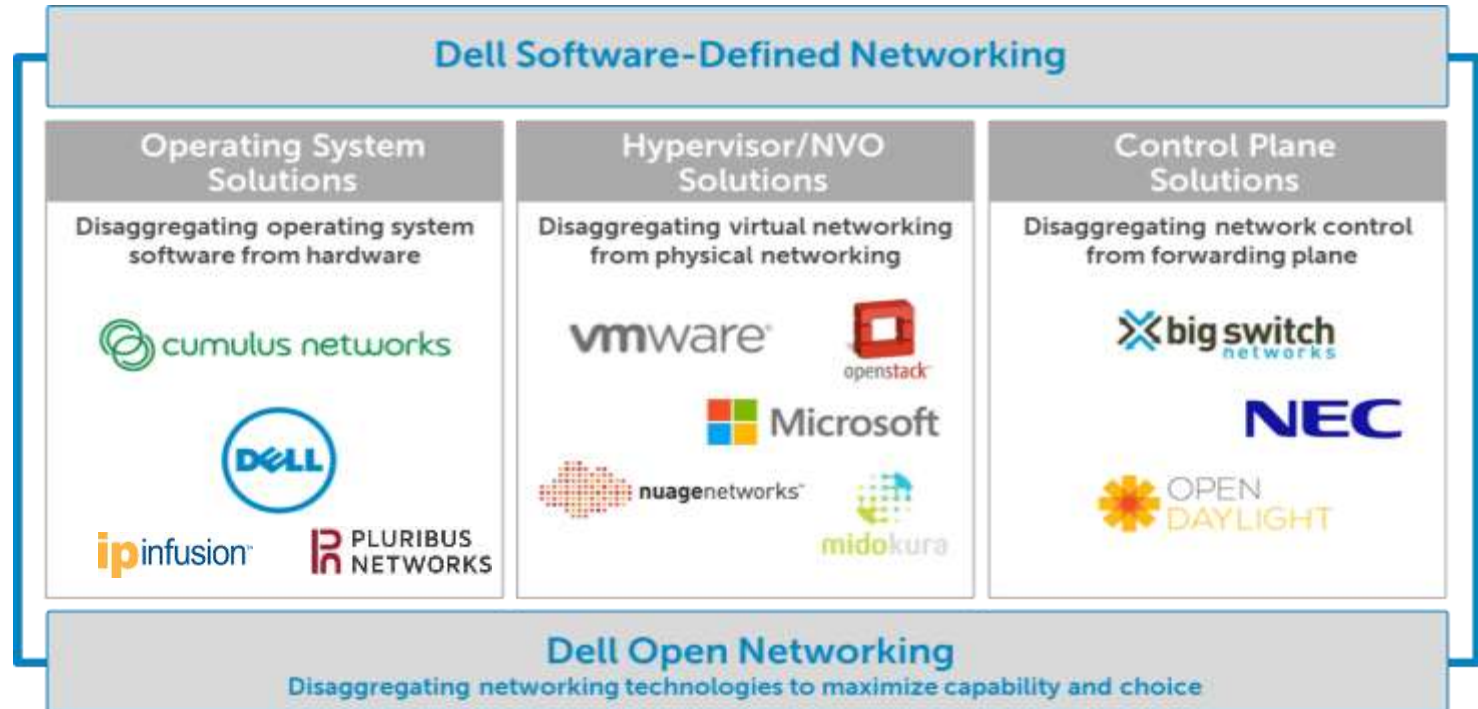


Open Networking



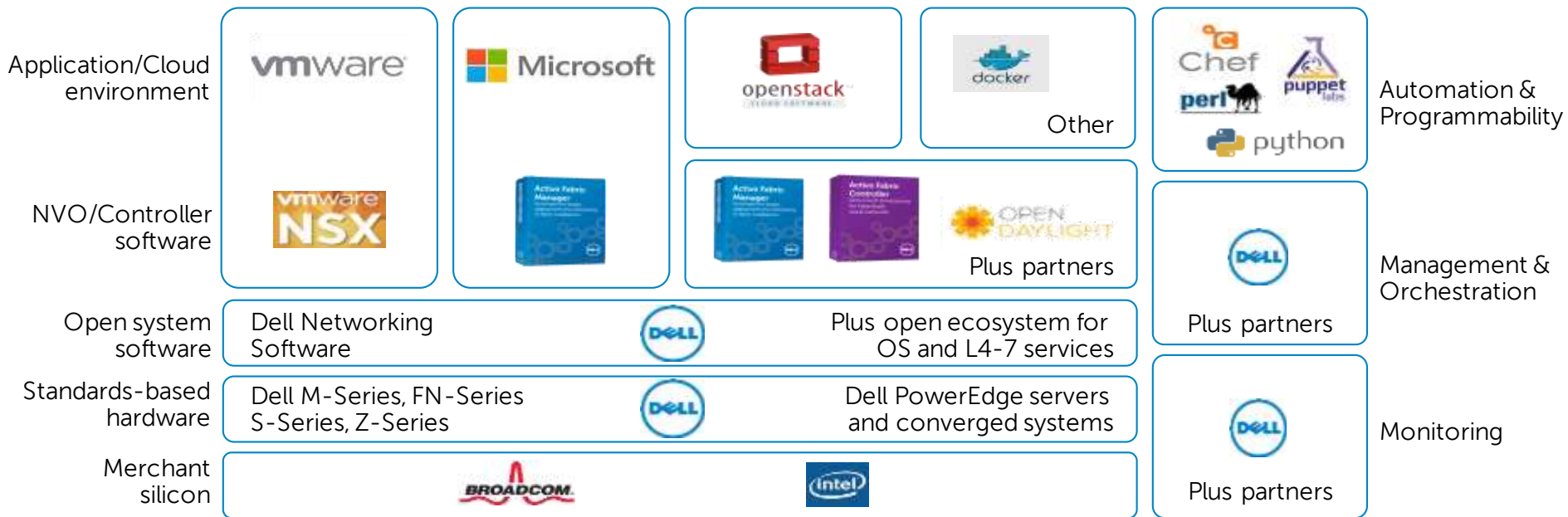
Dell Software-Defined Networking in the data center

Powered by Open Networking, choice + innovation



Dell Networking data center strategic framework

Open Networking: choice & innovation



Integrated solutions
for SMB & mid-market



Disaggregated solutions
for large enterprise & carriers



Dell Networking Z9100-ON

Next generation fixed-form factor 10/25/40/50/100GbE fabric switch



- **Dell's 1st 100GbE multi-rate 1RU fabric switch**

- Multi-rate switching
 - 32 ports x 40GbE or 100GbE (QSFP28)
 - 128 ports x 10GbE or 25GbE
 - 64 ports x 50GbE.
 - Additional 2 fixed 1/10 GbE SFP+ ports
- Support for Dell OS9.x & 3rd Party OS

- **Built for peak performance**

- Cloud/Web2.0 , HPC & Higher Ed, Government & Enterprise/Campus/DC interconnects
- Optimized for high performance, ultra-low latency Data Center requirements

- **Dell Innovation**

- Flexible & multi-rate (1 to 100GbE)
- QSFP28 100G form factor with low power, cost & space
- Open Networking enabled with ONIE & choice of 3rd Party OS



Dell Networking Z9100-ON

7X

Higher
density per
RU vs Cisco
Nexus 9504*

3X

Higher
density per
RU vs Juniper
QFX10002*

* Source: Competitive Data Sheets



Latest Open Networking options

Chose Open Networking hardware based on your needs. Support for Open Networking Install Environment (ONIE)



+ 3rd Party OS



S3048-ON

New generation 1/10GbE top-of-rack switch



S4048-ON

New 10/40GbE top-of-rack switch
48x10GbE & 6x40GbE with VXLAN



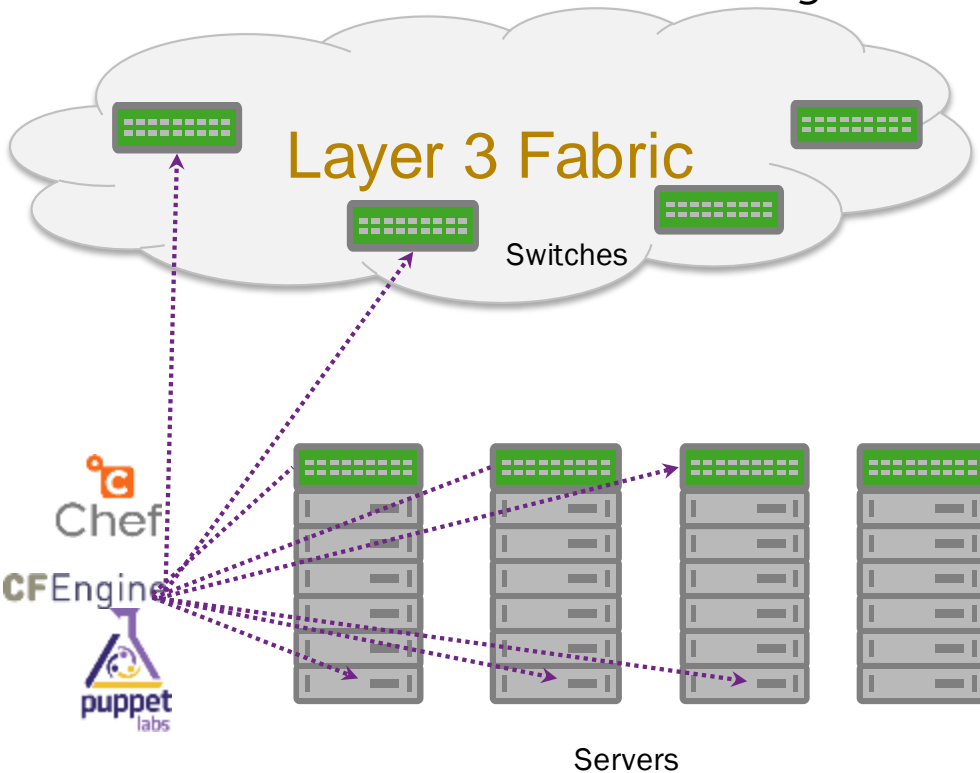
Z9100-ON

New multi-rate switch
1/10/25/40/50/100GbE
32x100GbE & 2x1/10GbE

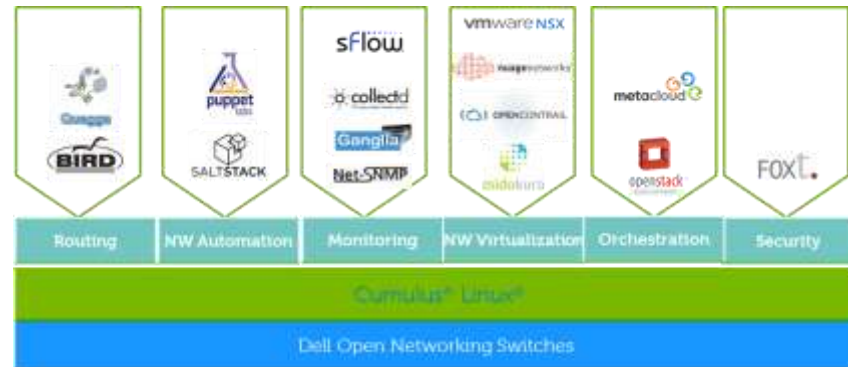


Cumulus offers significant value to customer

Consistent server-network management & rich ecosystem



Common automation tools for managing servers and network



Leverage more robust tools

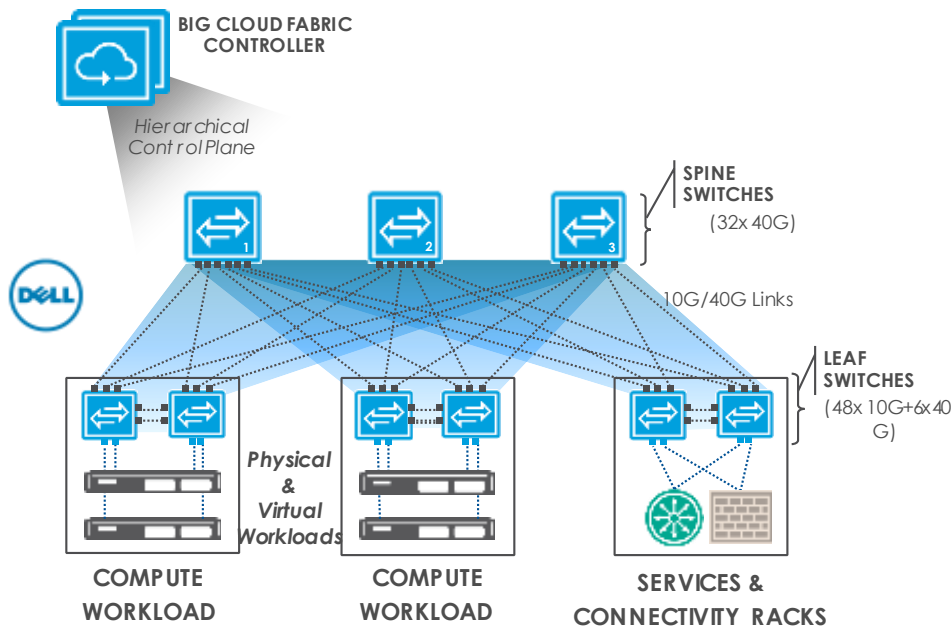
Move beyond basic SNMP and MIBs

Deploy agents directly on switches

Push stats and state instead of simple polling



BigSwitch cloud fabric overview



High Performance: Dense 10G/40G

Latest Merchant Silicon HW: Trident II

Scalable: Max scale of Trident II

Resilient: Headless Mode Operations

L4-7 Service Insertion & Chaining

Hypervisor: ESX, Hyper-V, KVM, Xen

Orchestration: OpenStack, CloudStack

Private/Public
Clouds

Big Data
Analytics

VDI

...

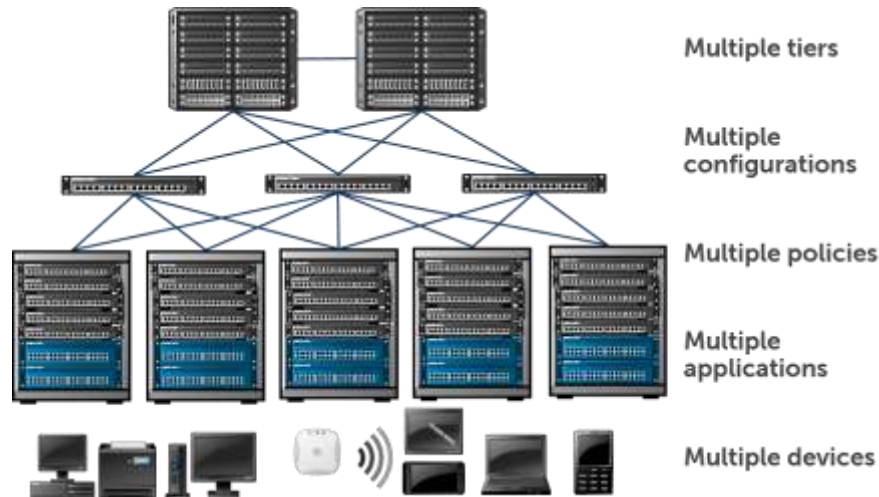
Single "Logical" Switch (Zero-touch fabric, Dramatic TCO reduction)



Unified Campus Architecture



Traditional networks are not optimized for end users, Increases complexity for administrators



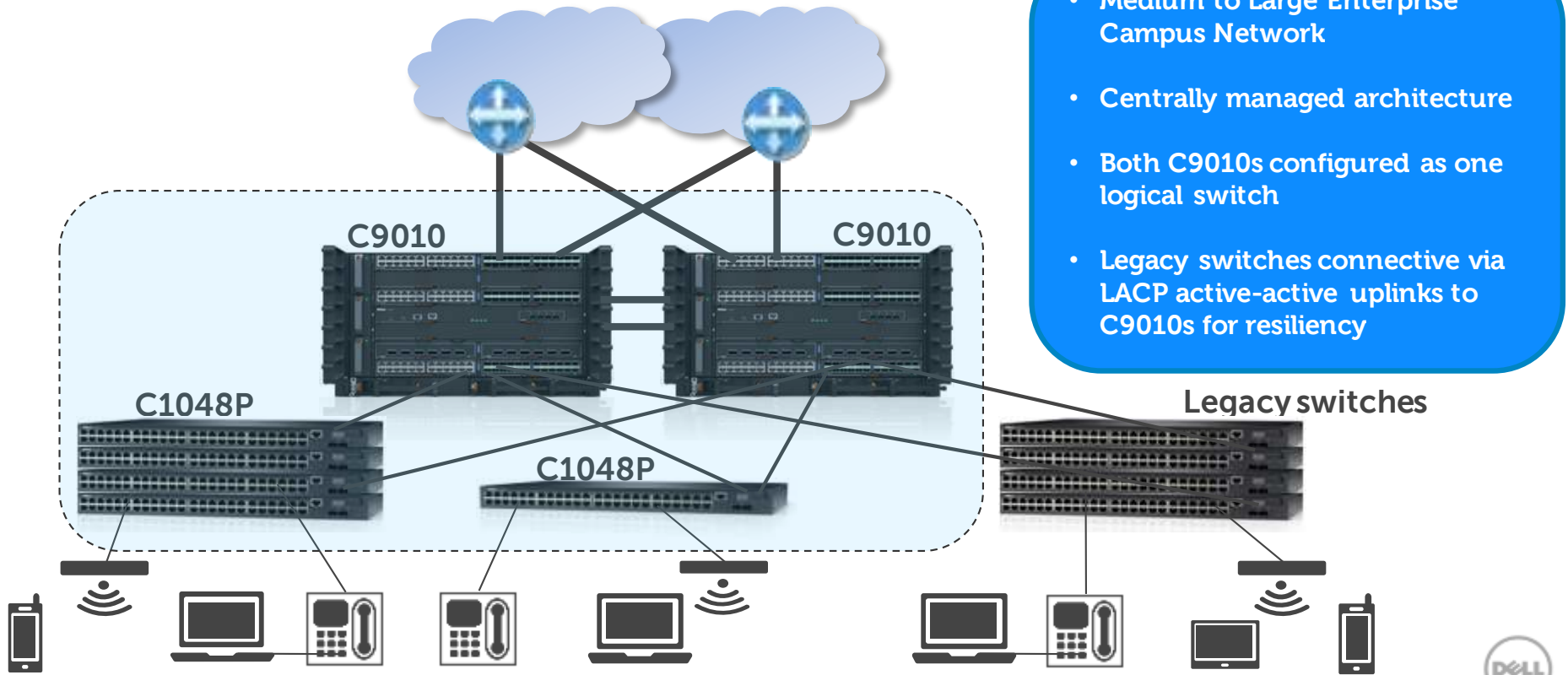
Challenges

- Multiple protocols and tiering (both physical & logical)
- Policy enforcement (users, devices, content)
- Complex configurations (multiple devices & types)
- High operating costs/shrinking budgets

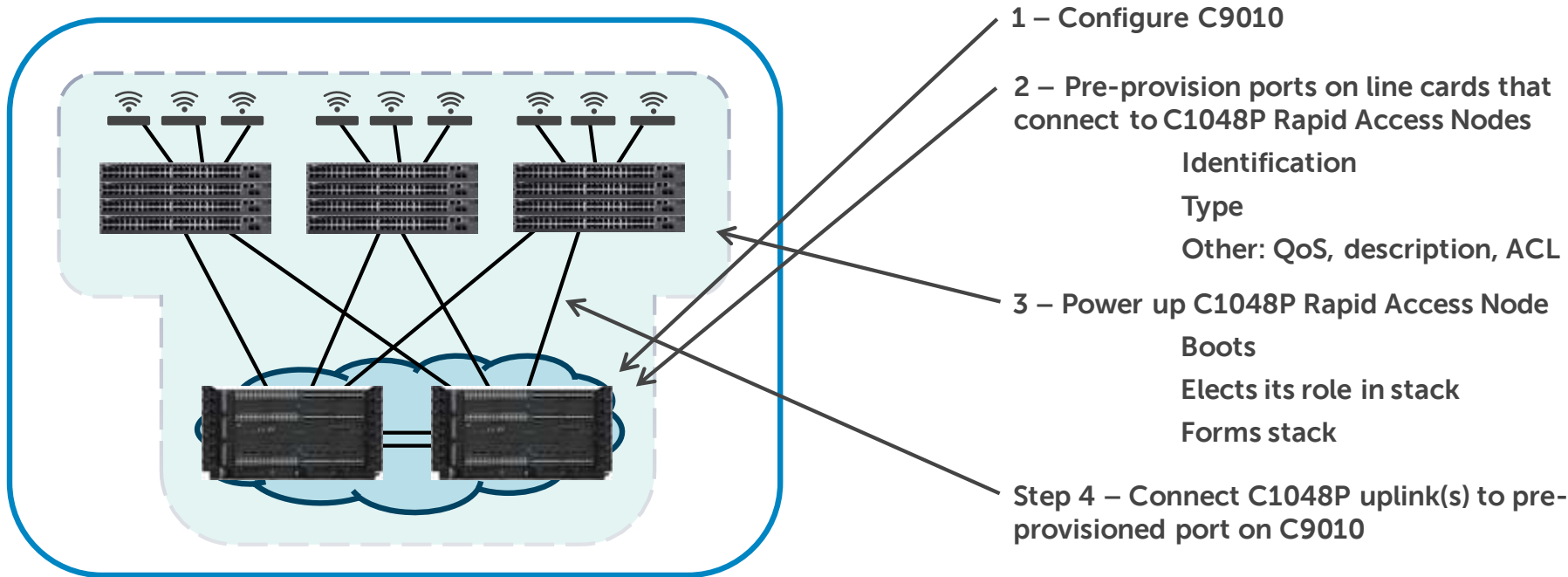
Requirements

- Personal device support
- “Seamless” mobility across network locations
- Multi-media usage for video, rich media
- Increased security needs
- Rapid service deployment (new services & applications)

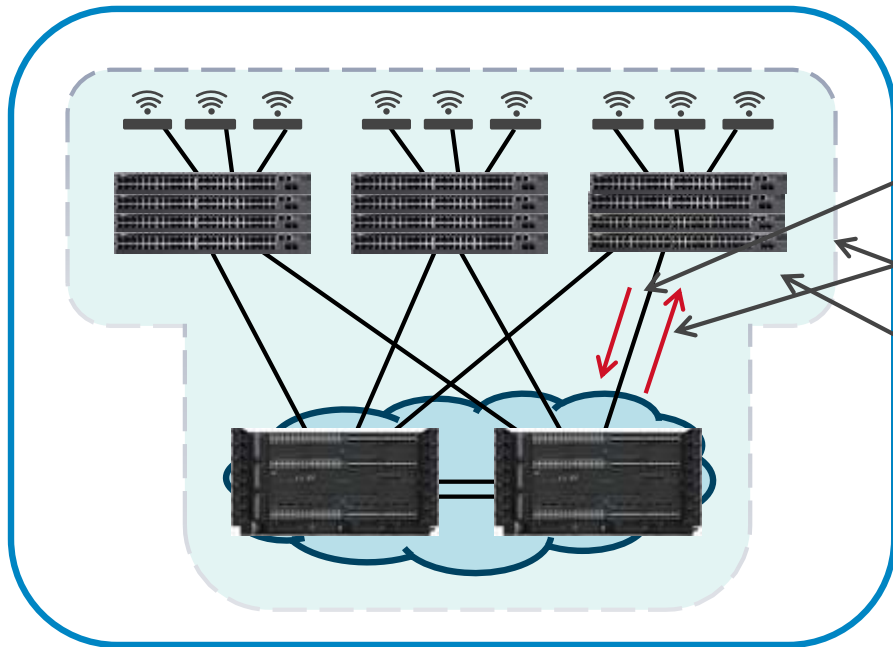
Solution: Network Director & Rapid Access node



Network Deployment of C9010 and C1048P



Network Deployment of C9010 and C1048P



5 – C1048P says "hello" on the uplink(s)

6 – Once C9010 line card detects "hello", it advertises provision information to C1048P

7 – C1048P Configures itself and becomes operational

8 – All traffic can be sent to C9010 for switching, still C1048P provides:

PoE+ power

Policy enforcement

802.1X-based security

Industry Leading Performance and Scalability

C9010 Network Director



Virtual Ports

Supports 2,000 Virtual Ports (40 Rapid Access Nodes) at RTS, and 4,000 Virtual Ports (80 Rapid Access Nodes) in a future release

Multi-Rate

C9010 backplane is designed to support multi-rate up to 100GbE

Stacking

Supports Rapid Access Node stacking up to 8 units high

Density

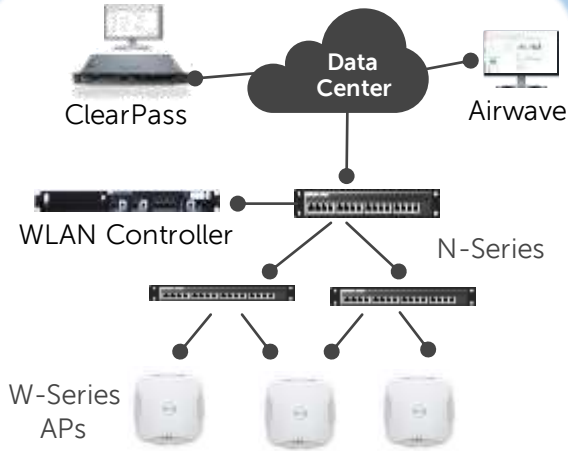
Supports up to 248 10GbE ports (SFP+ or 10GBASE-T)
Supports up to 60 40GbE ports

Mobility Solutions



Dell Networking offers wireless choice

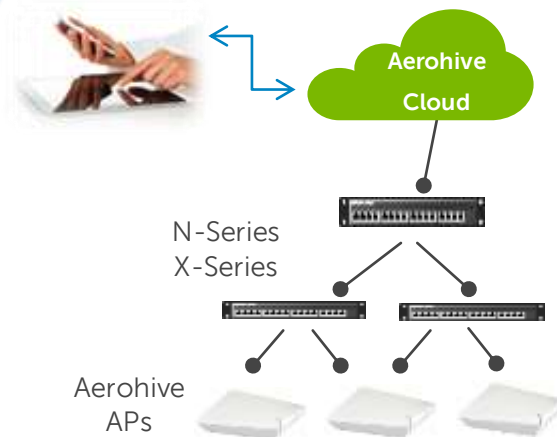
Enterprise Campus



- On-premise controller, management
- On-premise policy and enforcement

✓ **W-Series**

Distributed Campus

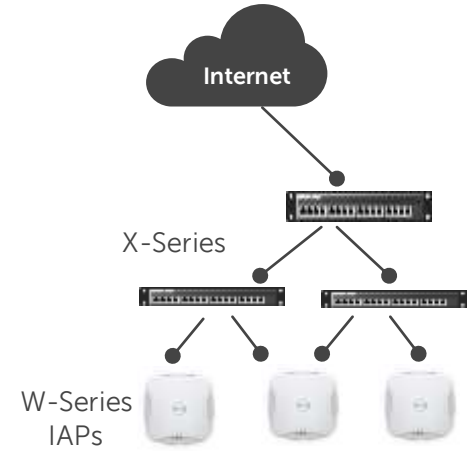


- Cloud-based management
- Policy management and enforcement

✓ **Aerohive**

NEW!

Small Office/ROBO



- Virtual controller built-in
- Easily expandable up to dozens of IAPs

✓ **W-Series**

Switch-like performance with 802.11ac Wave 2

Dell Networking W-320 Series high-performance access points

Best-in-class .11ac Wave 2 utilization

- Dual radio 4x4 802.11ac APs with multi-user MIMO
- Up to 1,733Mbps at 5GHz and 800Mbps at 2.4GHz
- Simultaneous multicast data transmission to multiple devices for max data throughput efficiency

Key differentiators

- Enhanced ClientMatch technology identifies and steers MU-MIMO capable mobile to the nearest AP
- Bluetooth Low-Energy (BLE) radio enables location based services with BLE-enabled mobile devices
- AppRF™ technology leverages deep packet inspection for management of over 1,500 enterprise apps
- Supports software upgrade for additional 5GHz spectrums



Products

Model	Details
W-AP324/W-IAP324	2.4GHz and 5GHz radios, each with 4x4 MIMO support and a total of four combined, diplexed (dual-band) external RP-SMA antenna connectors
W-AP325/W-IAP325	2.4GHz and 5GHz radios, each with 4x4 MIMO support and a total of eight integrated omni-directional downtilt antennas





HIVE
LISTED
NYSE



Dell - Internal Use - Confidential

Simple, Scalable,
Secure Mobility

Proven with Over
20,000 Customers

Over 1 000 000 AP's
shipped

Technology Pioneer

- Controller-less Architecture
- Cloud Networking
- Personalized Access
- Easy to expand

Dell Portfolio

Dell - Internal Use - Confidential

AP1130



AP130



AP230



802.11ac ACCESS POINTS
+
DELL SWITCHES



HIVEMANAGER



ID MANAGER



VERTICAL APPLICATIONS
& ANALYTICS

Aerohive 802.11ac APs



AP130



AP230



AP1130

Indoor		Outdoor
Dual Radio 802.11ac		
2x2:2 300 + 867 Mbps 11ac High Power Radios	3x3:3 450 + 1300 Mbps 11ac High Power Radios	2x2:2 300 + 867 Mbps 11ac High Power Radios
TPM Security Chip		
1X Gig E	2X GigE w/ link agg	1X GigE
802.3af powered	PoE (802.3af or at) and AC	PoE+ (802.3at)
Plenum Rated		Water Proof (IP 67)
0 to 40°C		-40 to 55°C
No USB	USB for iBeacon	No USB
Dell - Int		
\$649 NAM / \$699 INTL	\$799 NAM / \$880 INTL	\$1199 NAM / \$1549 INTL

Your cloud or ours?

Aerohive management systems run everywhere, private or public cloud—an industry first. Reduce CAPEX and OPEX by leveraging the versatility of the Cloud to manage your network.



HiveManager – Cloud Management



Dell - Internal Use

-] Centralized Configuration
-] AP OS Management
-] RF Planning
-] Monitoring
-] Reporting
-] Dashboard
-] Analytics
-] Troubleshooting

27

Dell - Internal Use - Confidential



Thank You
Dell Networking

