

# Devolution in the Midlands and East of England

**David Jones NCFE**

**Harminder Matharu AELP**

*From 2019-20, around 50% of the Adult Education Budget (AEB) will be devolved to 6 Mayoral Combined Authorities (MCAs) and delegated to the Greater London Authority (GLA). This Devolution workshop will provide the latest information on policy developments and operational processes as the 2019/20 academic year approaches.*

*Join us as we discuss developments within the North covering the following areas:*

*Cambridgeshire and Peterborough  
West Midlands*

# Introductions

## David Jones

David joined NCFE in November 2018 as Product Manager for Adult Education and Skills, with a particular focus on AEB and devolution. David joined NCFE from Northumbria University where he worked for 11 years, most recently as Country Manager for a number of different European markets. David led on strategies including EU student recruitment and stakeholder relationships.

## Harinder Matharu

Harinder joined AELP in December 2018 as the Devolution Policy and Implementation Director with an immediate focus on AEB devolution and working closely with the MCAs / GLA and providers. Previously, Harinder spent 10 years working for the Skills Funding Agency and the National Apprenticeship Service with experience of provider management and working across government departments on skills policy and training.

# Agenda

1. AEB 2019/20 - Devolved v Non-Devolved Funding
2. What will the ESFA fund?
3. Cambridgeshire and Peterborough
4. West Midlands
5. Skills Mapping
6. Provider Lists
7. Discussion
8. Questions

# AEB 2019/20 - Devolved v Non-Devolved Funding

Devolved AEB across 7 areas	Non-Devolved AEB from ESFA
50% of total AEB	50% of total AEB
Allocated by MCAs/GLA through grants and contract for services through recent procurement	Allocated by ESFA through grants and contract for services
Delivery in the <b>devolved area only</b> for which providers hold a grant or contract	Delivery in <b>any non-devolved area only</b> for new learners and <b>any 2018/19 carry-over learners in any area</b> for which providers hold a grant or contract

- Consider partnering with grant or contract for services providers and deliver under a subcontracting arrangements
- Check the relevant devolved area's set of devolved AEB performance management and funding rules on their individual websites.

# What will the ESFA fund?

ESFA AEB funding rules 2019/20: [https://assets.publishing.service.gov.uk/government/uploads/system/uploads/attachment\\_data/file/804647/AEB\\_2019-20\\_rules\\_24\\_May\\_draft\\_v.1.pdf](https://assets.publishing.service.gov.uk/government/uploads/system/uploads/attachment_data/file/804647/AEB_2019-20_rules_24_May_draft_v.1.pdf)

## Note the following update:

*‘Ministers have agreed that for a period of two years (2019 to 2020 and 2020 to 2021) providers that meet the following criteria will be funded nationally:*

- qualify for a financial residential uplift for their learning provision, and*
- receive more than two thirds of their income from AEB funding, and*
- predominantly target the most disadvantaged learners’*

**This refers to providers within the devolved Combined Mayoral Authorities & Greater London Authority;** for institutions within these geographies, this funding will apply, co-ordinated through the national ESFA office. The ESFA state that this section *‘reflects the new legal framework which applies further to the devolution of adult education functions’*.

The providers which currently meet these criteria are:

- Fircroft College, Birmingham,
- Richmond and Hillcroft Adult and Community College, London,
- Northern College, Barnsley, and
- Ruskin College, Oxfordshire

With the exception of Richmond and Hillcroft Adult Community College, where a specific arrangement is in place with the Mayor of London/GLA, funding attributable to delivery by these providers is not included in devolved budget shares.

Allocations to these providers was administered nationally by the ESFA in March 2019. These providers can use this funding to deliver provision to eligible learners resident anywhere in England. Devolved authorities, should they wish to, are able to have additional funding relationships in place with the above providers during the 2 year transitional period.

# Cambridgeshire and Peterborough



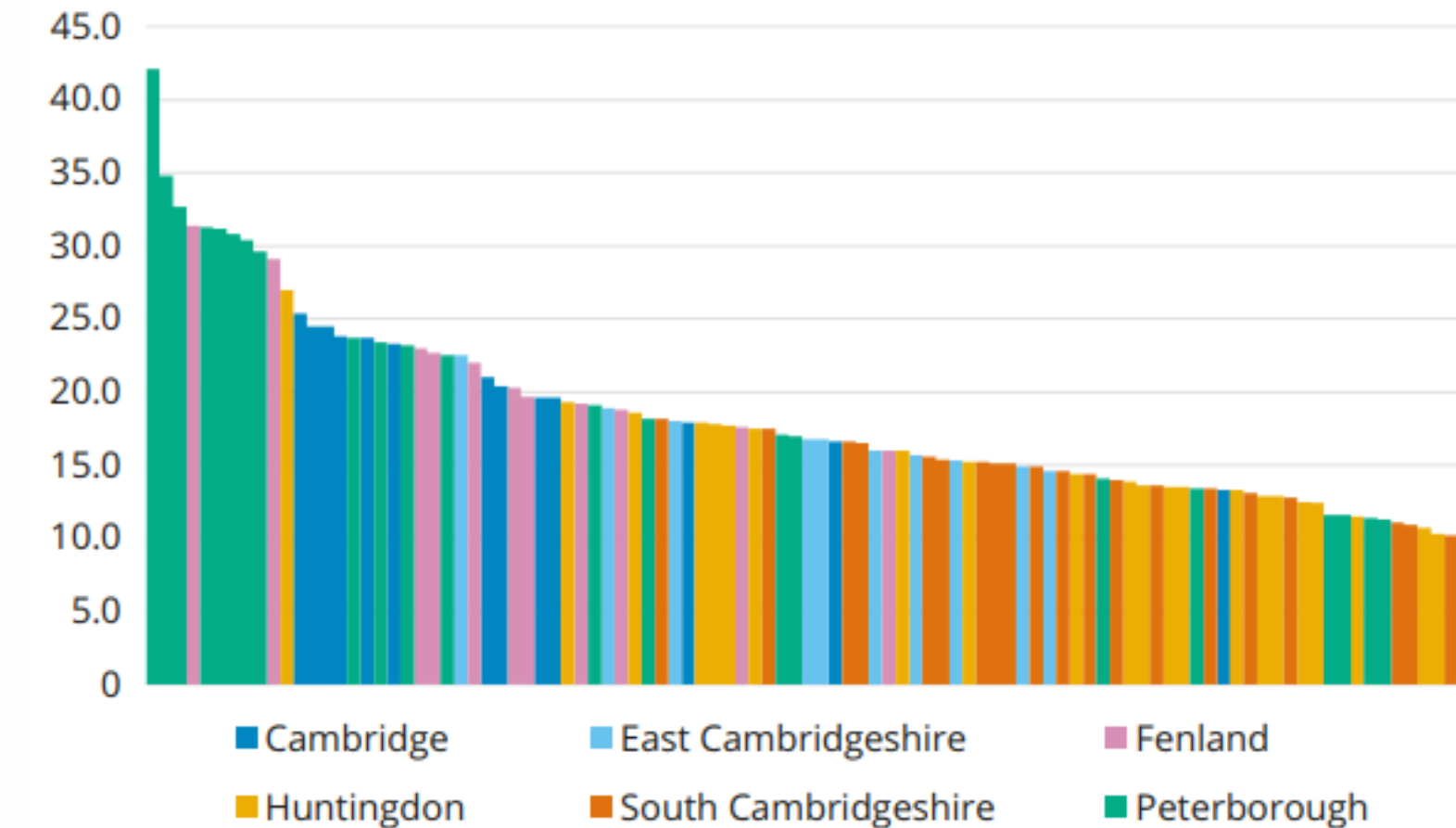
- £12m – Total funding under devolved AEB
- £3.5m - £4m – Estimated tender value
- 29-33 – percentage procured

Bidders have been notified – not published yet

- 5 Providers
- 12 Grants

## Economic and social mobility indicators

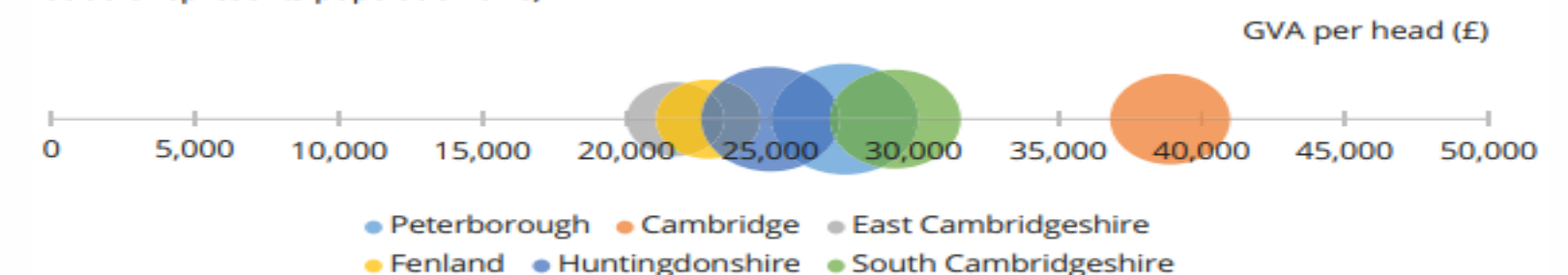
**Figure 12** - MSOAs ranked by the percentage of households in poverty



Source: ONS 2014

<sup>10</sup><http://www.centreforcities.org/blog/focusing-inequality-best-way-tackle-poverty-uk-cities/>

**Figure 13** – GVA per head in each local authority of Cambridgeshire and Peterborough (size of the bubble represents population size)



Source: ONS Regional Gross Value Added (Balanced) by Local Authority

# West Midlands

## Economic and social mobility indicators



- The number of jobs in the WMCA region has been increasing year on year, a **5%** rise since 2013.
- The proportion of NEETS in the WMCA continues to decline (**5.8%** in 2014 to **4.4%** in 2015).
- The number of those with no qualifications has decreased from **14.5%** to **13%**
- The number of people claiming key out-of-work benefits is at the lowest level for 10 years.



Source: DWP, 2016

- £125.6m – Total funding under devolved AEB
- £28m – Estimated tender value
- 22 – percentage procured

- The proportion of WMCA residents with no qualifications decreased from **14.5% (365,600)** in 2015 to **13% (329,400)** in 2016. To reach the current UK average (**8.3%**) requires a further upskilling of **119,867** people.

Bidders have been notified – not published yet

- 28 FECs
- 21 ITPs
- 5 LAs



Source: ONS (2017) Annual Population Survey 2016

Skills mapping analysis against sub-sector subject areas.

Using skill strategy, industrial strategy and other MCA/GLA process documents.

Sector Subject Area	Cambridgeshire and Peterborough	West Midlands
01.1 Medicine and Dentistry		
01.2 Nursing and subjects and vocations allied to medicine		
01.3 Health and social care		
02.1 Science		
02.2 Mathematics and statistics		
03.1 Agriculture		
04.1 Engineering		
04.2 Manufacturing technologies		
04.3 Transportation operations and maintenance		
05.2 Building and construction		
05.3 Urban, rural and regional planning		
06.1 ICT practitioners		
06.2 ICT for users		
07.1 Retailing and wholesaling		
07.2 Warehousing and distribution		
07.4 Hospitality and catering		
08.1 Sport, leisure and recreation		
08.2 Travel and tourism		
09.3 Media and communication		
12.1 Languages, literature and culture of the British Isles		
14.1 Foundations for learning and life		
15.2 Administration		
15.3 Business management		

Skills priorities are subject to change

Areas not included
01.4 Public services
01.5 Child development and well-being
03.2 Horticulture and forestry
03.3 Animal care and veterinary science
03.4 Environmental conservation
05.1 Architecture
07.3 Service enterprises
09.1 Performing arts
09.2 Crafts, creative arts and design
09.4 Publishing and information services
10.1 History
10.2 Archaeology and archaeological sciences
10.3 Philosophy
10.4 Theology and religious studies
11.1 Geography
11.2 Sociology and social policy
11.3 Politics
11.4 Economics
11.5 Anthropology
12.2 Other languages, literature and culture
12.3 Linguistics
13.1 Teaching and lecturing
13.2 Direct learning support
14.2 Preparation for work
15.1 Accounting and finance
15.4 Marketing and sales
15.5 Law and legal services

West Midlands - Grants

Organisation name	provider type
BIRMINGHAM CITY COUNCIL	college
BIRMINGHAM METROPOLITAN COLLEGE	college
BURTON AND SOUTH DERBYSHIRE COLLEGE	college
CITY OF WOLVERHAMPTON COLLEGE	college
COVENTRY CITY COUNCIL	college
COVENTRY COLLEGE	college
DUDLEY COLLEGE	college
DUDLEY METROPOLITAN BOROUGH COUNCIL	college
HALESOWEN COLLEGE	college
HEART OF WORCESTERSHIRE COLLEGE	college
HEREWARD COLLEGE OF FURTHER EDUCATION	college
JOSEPH CHAMBERLAIN SIXTH FORM COLLEGE	college
KIDDERMINSTER COLLEGE	college
NORTH WARWICKSHIRE AND SOUTH LEICESTERSHIRE COLLEGE	college
SANDWELL COLLEGE	college
SANDWELL METROPOLITAN BOROUGH COUNCIL	college
SHREWSBURY COLLEGES GROUP	college
SOLIHULL COLLEGE AND UNIVERSITY CENTRE (inc. Stratford)	college
SOUTH & CITY COLLEGE BIRMINGHAM (inc. Bournville)	college
SOUTH STAFFORDSHIRE COLLEGE	college
TELFORD COLLEGE	college
UNIVERSITY COLLEGE BIRMINGHAM	college
WALSALL COLLEGE (inc. Walsall MBC)	college
WARWICKSHIRE COLLEGE	college
WOLVERHAMPTON CITY COUNCIL	college
WORKERS' EDUCATIONAL ASSOCIATION	VCSE

Note: Combined Authorities yet to officially publish provider lists

West Midlands - Procured

Organisation name	provider type	
Advanced Personnel Management Group (UK) Limited	ITP	
Back 2 Work Complete Training Ltd	ITP	multiple CAs
BCTG	ITP	
Derby Business College Ltd T/A DBC Training	ITP	
Enterkey Training Ltd	ITP	
GB Training (UK) Ltd	ITP	
Gecko Programmes	ITP	
Go Train Ltd	ITP	
Netcom Training Ltd	ITP	
P.T.P Training Limited	ITP	
PeoplePlus Group Ltd	ITP	
PET-Xi Training Ltd	ITP	
Phoenix Training (Midlands) Ltd	ITP	
Pilot IMS	ITP	
Release Potential Ltd	ITP	
Serco Ltd	ITP	
Skills Training UK	ITP	
System Group	ITP	multiple CAs
Total Training Company (UK) ltd	ITP	
Vocational Skills Solutions	ITP	multiple CAs
Witton Lodge Community Association	ITP	

Cambridgeshire & Peterborough  
Grants

Organisation name	provider type
Bedford College	college
Cambridge Regional College	college
Hill Road Sixth Form College	college
New College Stamford	college
North Herefordshirecollege - 2 Scenarios	college
The College Of West Anglia	college
West Suffolk College	college
Cambridgeshire County Council	local authority
Central Beds Council	local authority
Peterborough City College - (Council)	local authority
Peterborough Regional Council	local authority
Rutland County Council	local authority

Cambridgeshire & Peterborough  
Procured

Organisation name	contract type	provider type	
Back to Work Complete Training Ltd	procured	ITP	multiple CAs
Nacro	procured	ITP	
Steadfast Training	procured	ITP	
The Consultancy Home Counties	procured	ITP	
The Skills Network	procured	ITP	

# Discussion

## Opportunities

- Subcontracting
- Partnerships
- Provider Networks
- How can we help you?

**Harminder Matharu**  
**Devolution Policy and Implementation Director – AELP**  
[hmatharu@aelp.org.uk](mailto:hmatharu@aelp.org.uk)

**David Jones**  
**Adult Education Product Manager - NCFE**  
[davidjones@ncfe.org.uk](mailto:davidjones@ncfe.org.uk)

# Useful Links:

AELP Regional – Midlands <https://www.aelp.org.uk/resource-and-information-centre/resource-and-information-centre/regions/midlands/>

Cambridgeshire and Peterborough Independent Economic Review <https://www.cpier.org.uk/media/1672/cpier-report-151118-lowres.pdf>

Cambridgeshire and Peterborough Combined Authority AEB <https://cambridgeshirepeterborough-ca.gov.uk/about-us/programmes/adult-education-budget/>

West Midlands Combined Authority Annual Economic Review  
<https://www.blackcountrylep.co.uk/upload/files/WMCA/WMCA%20Annual%20Economic%20Review%202017v2.pdf>

West Midlands Combined Authority AEB <https://www.wmca.org.uk/what-we-do/productivity-skills/adult-education-budget/>

West Midlands Local Industrial Strategy [https://assets.publishing.service.gov.uk/government/uploads/system/uploads/attachment\\_data/file/802092/west-midlands-local-industrial-strategy-double-page.pdf](https://assets.publishing.service.gov.uk/government/uploads/system/uploads/attachment_data/file/802092/west-midlands-local-industrial-strategy-double-page.pdf)