

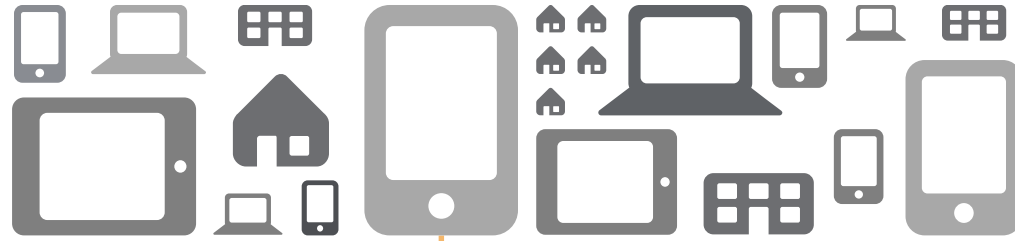


# Secure Access in a Hybrid Cloud World

Tabrez Surve – Regional Security Sales Manager

Yasser Elmashad – Security Specialist

# Business Today is Driven by Mobility and the Cloud...

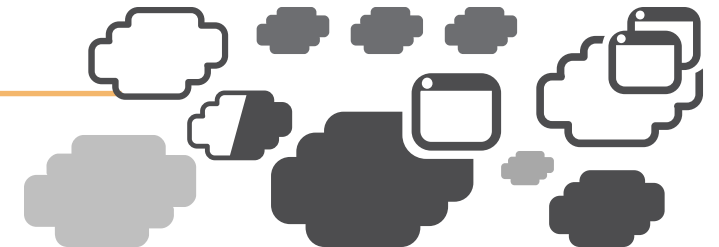


Today's workforce is  
**Mobile**

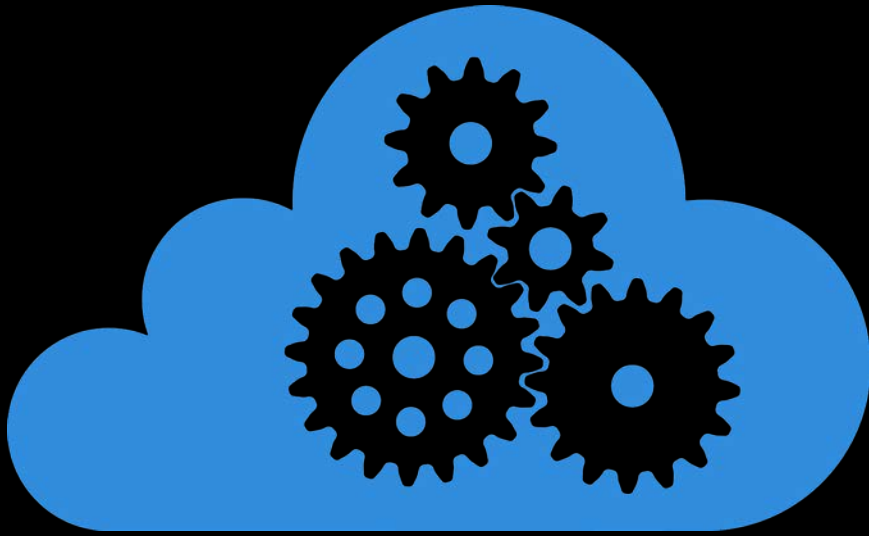
Most applications are  
**Web-based apps**



**Cloud and SaaS-based applications**  
are being deployed and used  
faster than ever



# Hybrid Cloud is the new normal.



81%

Enterprises have  
a hybrid cloud  
strategy<sup>4</sup>

20%

plan to migrate  
>50% of their Apps  
to the Cloud

Sources: State of Application Delivery Survey, 2016

# Why are Apps moving to the cloud ?

Improve Time to Market

27%

Improve time to  
Market

Reduce OpEx

41%

Reduce Opex

Reduce CapEx

21%

Reduce Capex

Sources: F5 State of Application Delivery Survey, 2016

# It's an Application World



508

Average number  
of apps per  
enterprise<sup>3</sup>

26.8

Average number of  
apps per worker<sup>2</sup>

3,5

Average number of  
devices per  
person<sup>2</sup>

## Any App, Any Device, Anywhere !

More endpoints

More delivery models

More apps

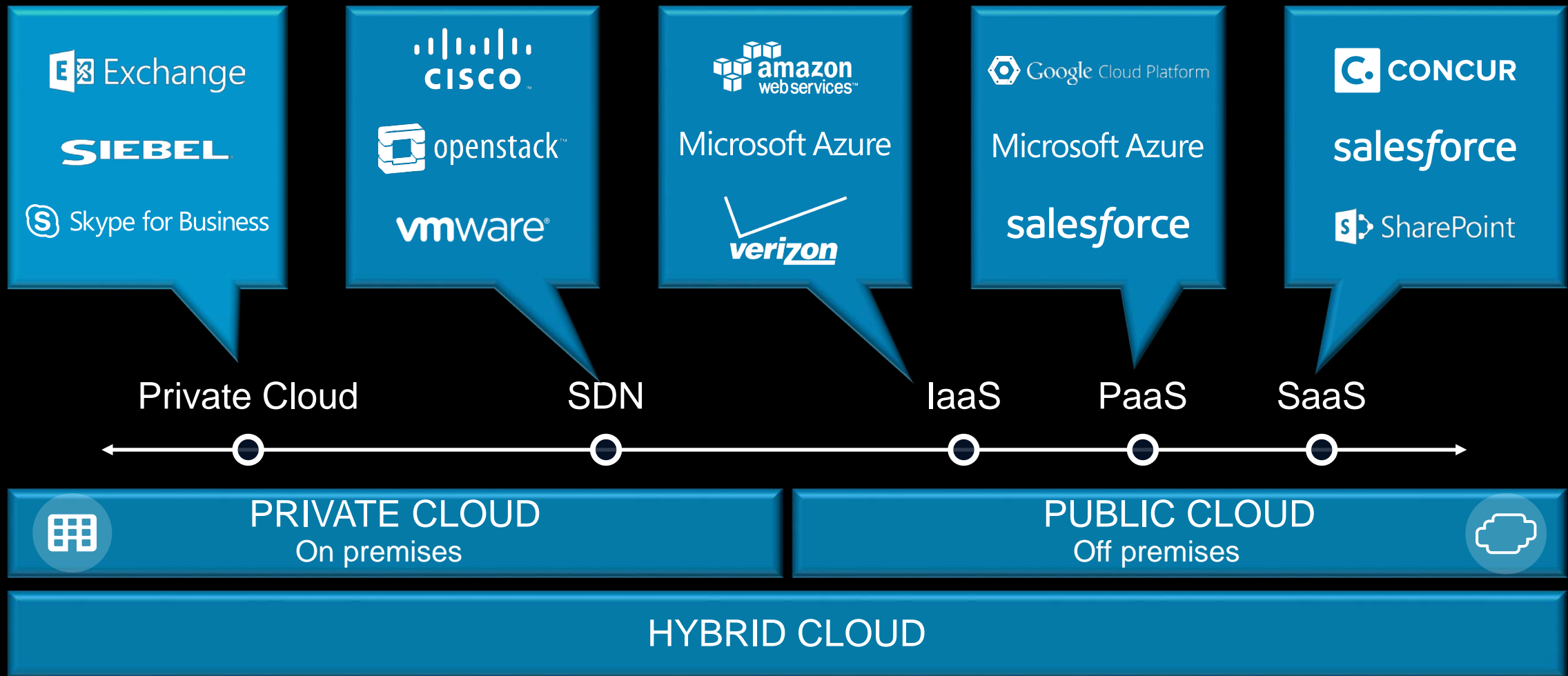
Sources: <sup>2</sup>Forbes, <sup>3</sup>F5 State of Application Delivery Survey, 2016

# From what we can see in the market ...

- Majority of our customers adopt the following Hybrid Cloud Strategy
  - Move non Critical Apps to SaaS
  - New Apps with a Cloud 1st Strategy
  - Migrate some existing Apps to a Private Cloud
- Trend to move to Non Mission Critical Apps to SaaS
  - Focus on their business
  - Move from Capex to Opex basic IT services

# The Cloud Spectrum

Not all clouds and services created equal...





# The Problem





# Challenges of Managing Access Today



Rapidly expanding,  
changing mobile workforce



Explosion in number of users,  
use cases, in-use devices



Increased virtualization



Fast rising number of  
security threats and attacks

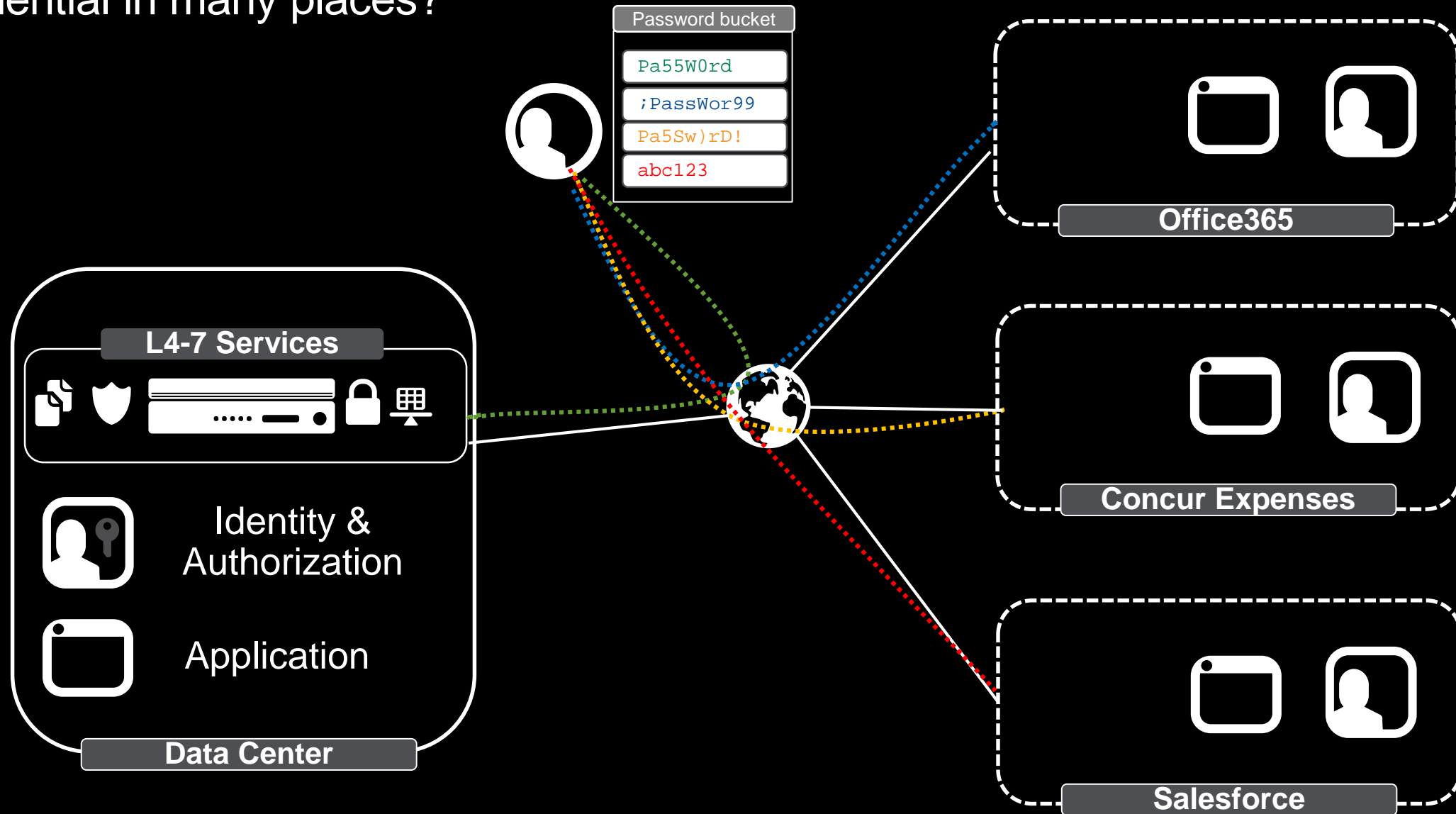
Need to manage access based on identity and context

# Challenges with Apps moving to the Cloud

- App is moving to the Cloud but it's access policy & security is still customer IT responsibility.
  - AAA Management with 3rd parties
    - Do I need to call Concur , MSFT, etc. everytime an employee joins or leaves the organisation to allow/kill its access to SaaS ?
  - Access to Apps in the Cloud still need to follow the same security mechanisms
    - Ex: Some Apps hosted in my DC are not authorised if accessed from non Company issued devices.
    - How do you ensure your access policy is the same for all your Hybrid Apps.
- User Acceptance
  - Multiple Apps, multiple 3rd parties => multiple passwords.

# User's Authentication and Experience

## Credential in many places?



# Password Fatigue Leads to Weak Passwords and Credentials With Devastating Affects

Rising (monetary) costs of data breaches

**\$3.8M** Average total cost of a data breach<sup>1</sup>

**23%** Increase in data breach cost, '14 to '15<sup>1</sup>

**\$154** Average cost per lost or stolen record<sup>1</sup>

Rising (business) costs of data breaches

- Damage to brand reputation
- Compromises sensitive enterprise, employee and customer data
- Can result in significant downtime and lost revenue
- Breaches regulatory and/or government compliance required to conduct business

# Solution

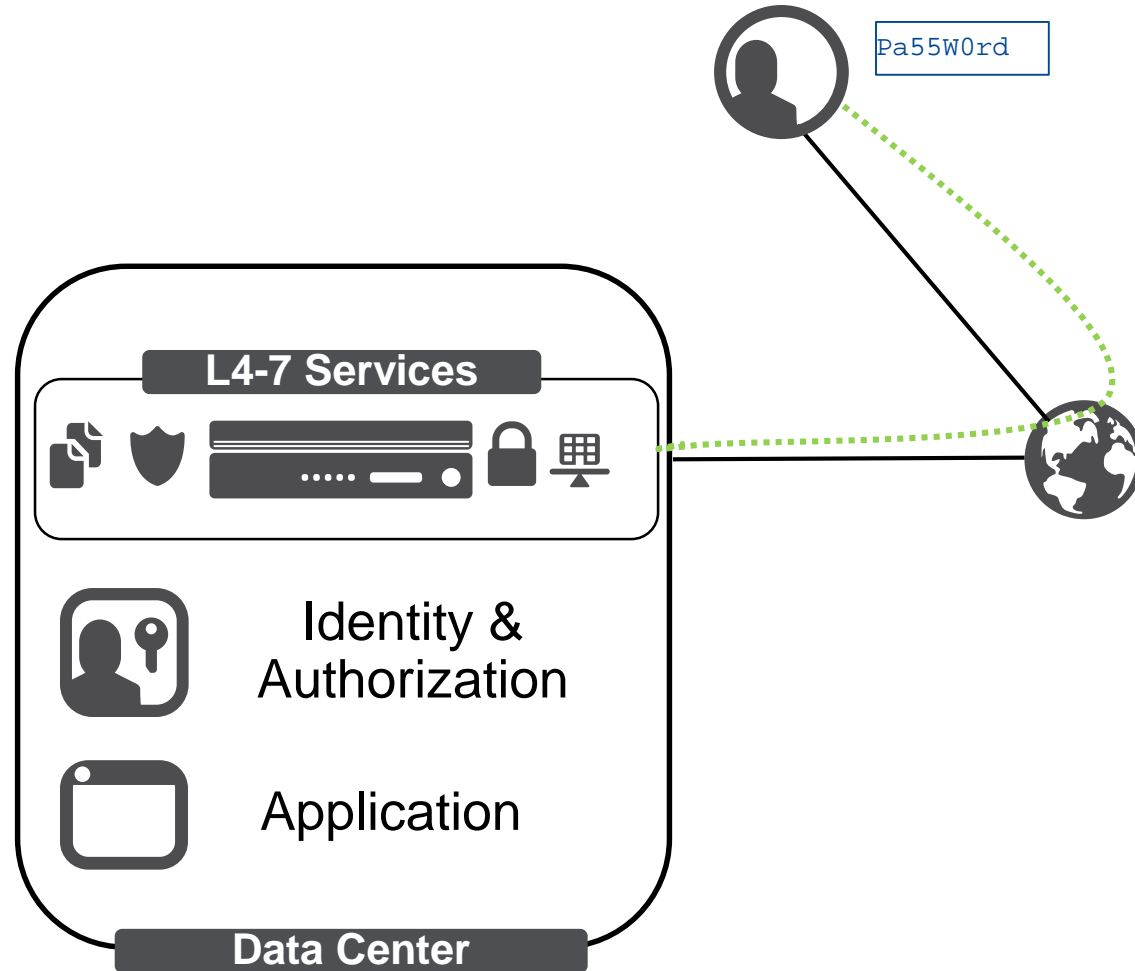


# Identity Drives Application Access and Accessibility





# Identity Used to be Easy



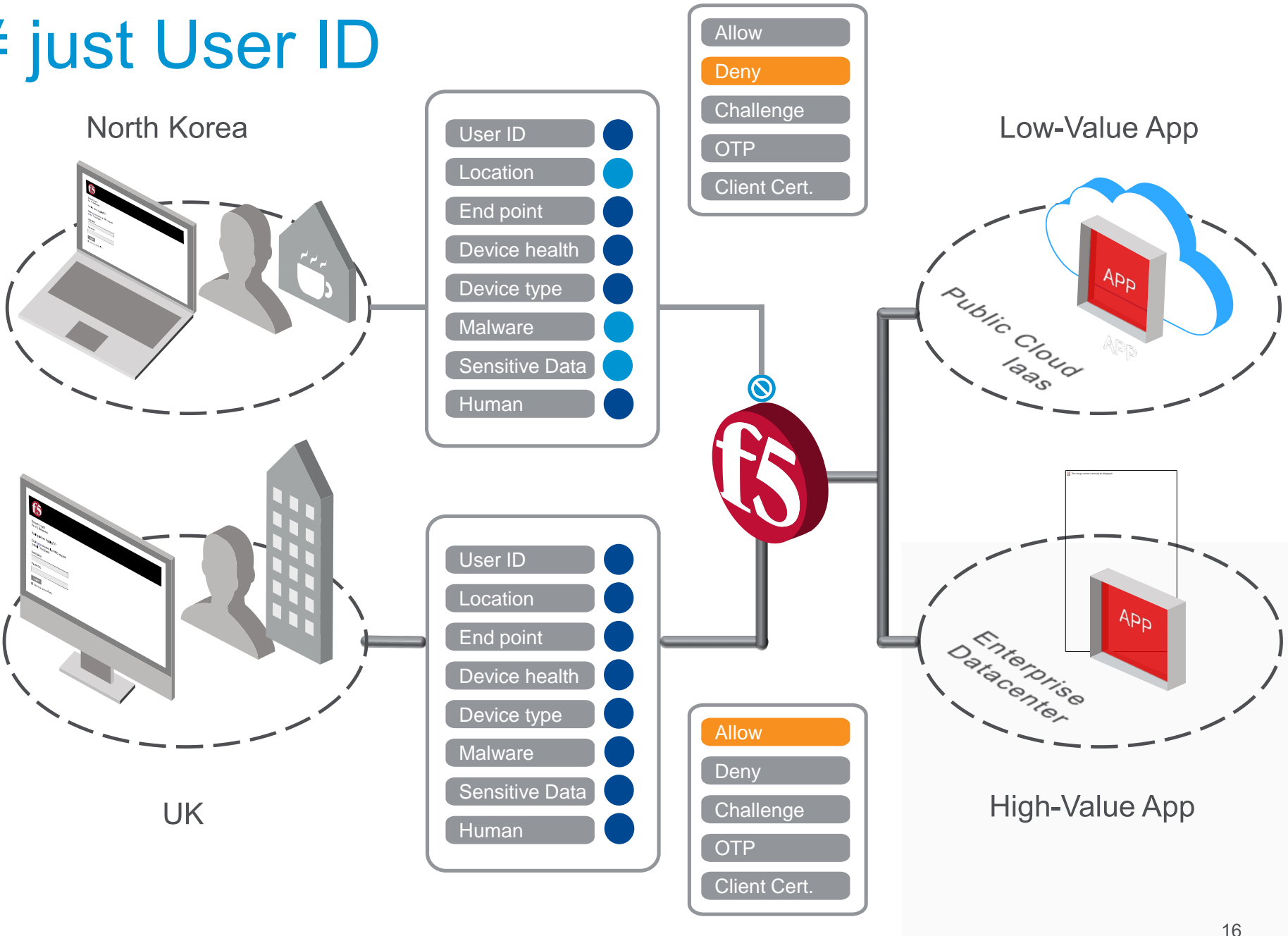
# User Identity ≠ just User ID

## Key Benefits:

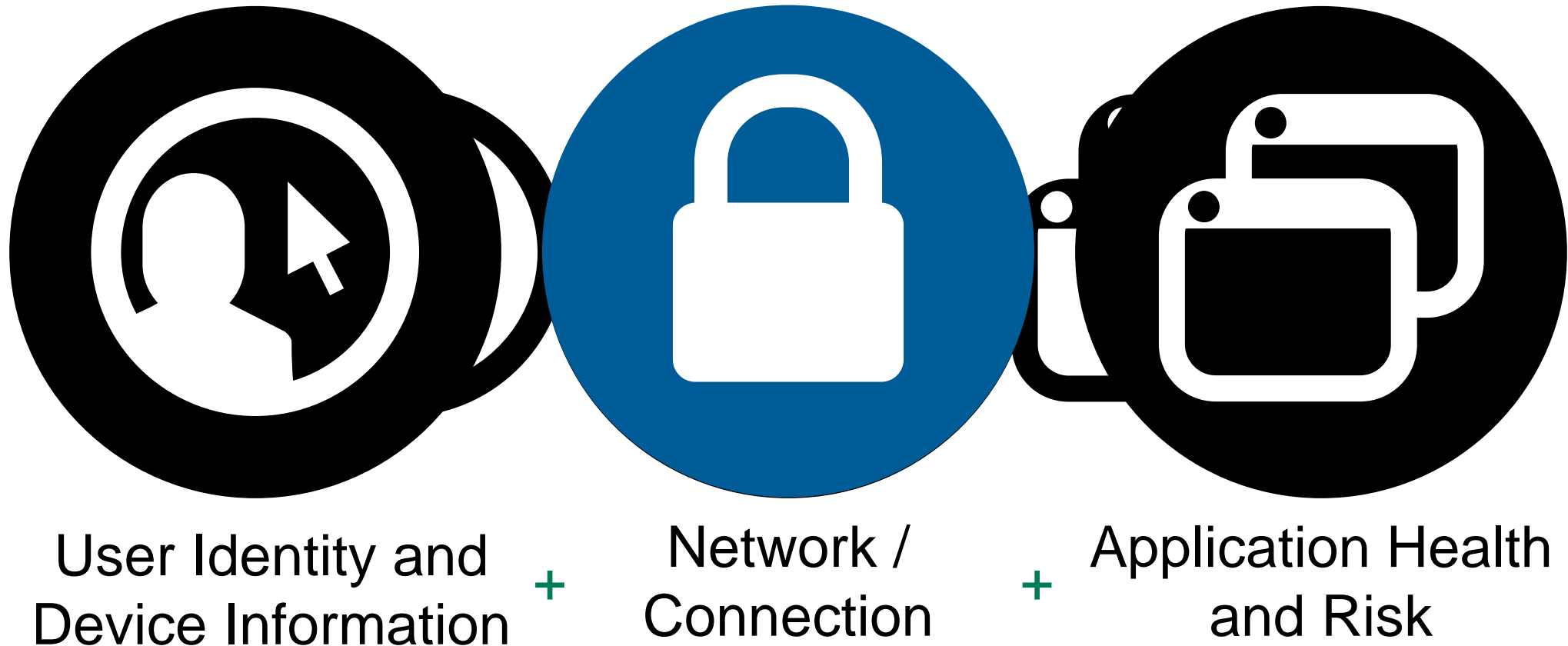
F5's solution can optimize and prioritize resources.

Unparalleled insight into both known 'good' and known 'bad' traffic flow to maintain application health and protect critical assets

Industry leading intelligence ecosystem



# Controlling access through identity

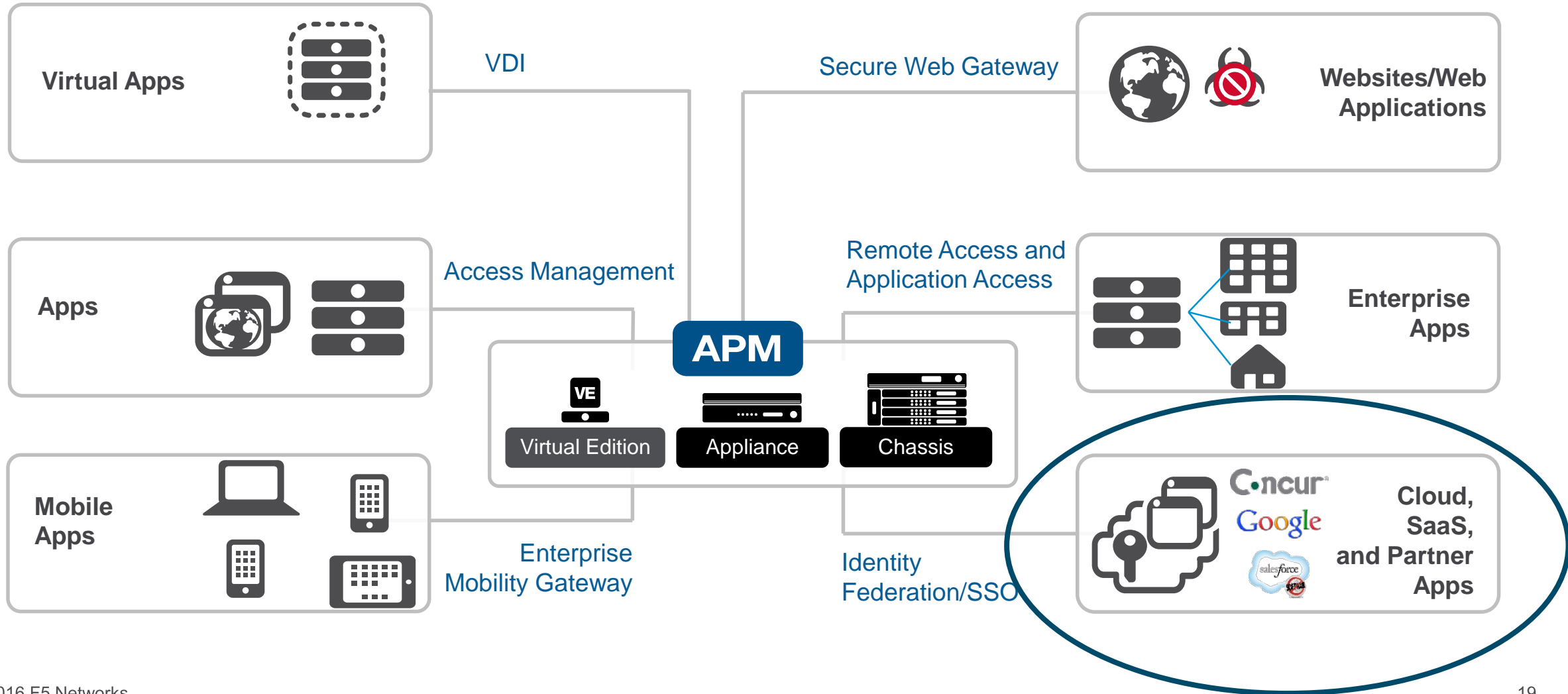


# Identity is the Key to Adaptive Authentication and Access

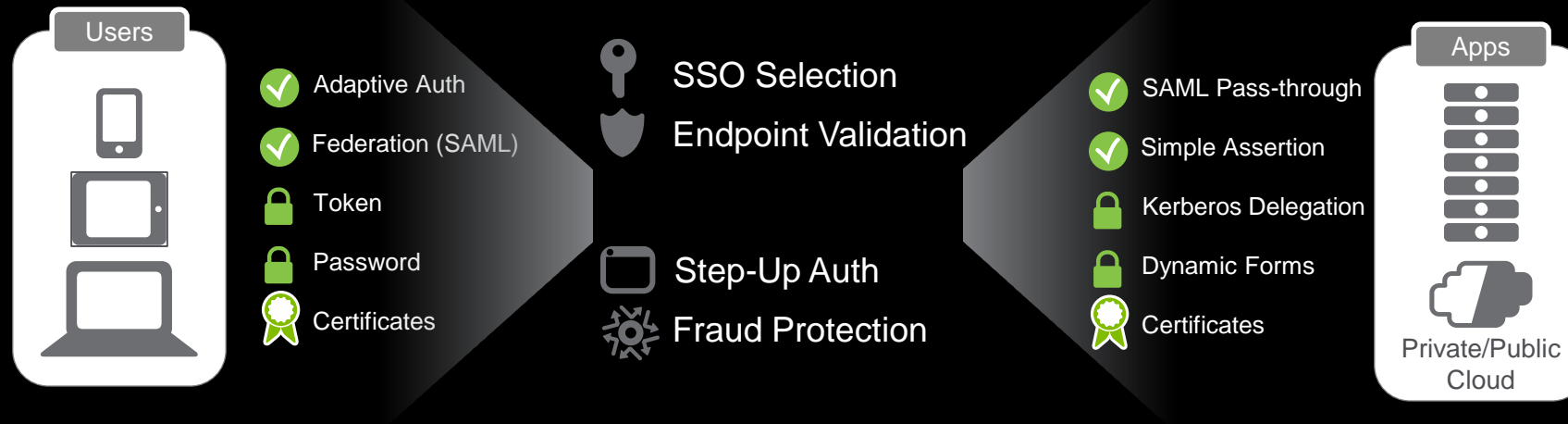


# F5's Application Access Solution

Authentication, authorization, and SSO to all applications



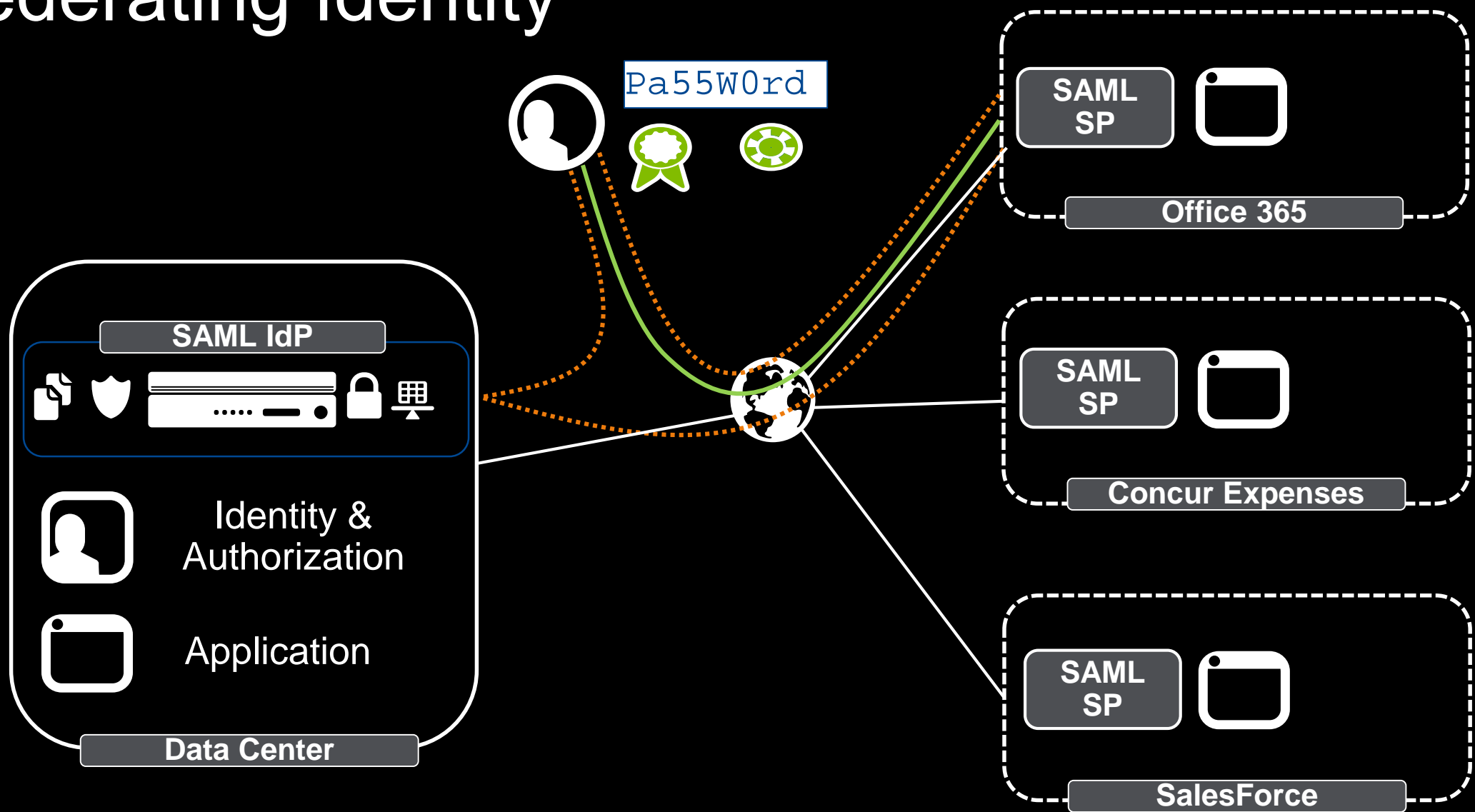
# Flexible, Extensible Identity Federation and SSO Support



- Transforms one type of authentication into another
- Supports various standards-based protocols (SAML, Kerberos, NTLM)
- Enables flexible selection of SSO techniques appropriate to the application
- Allows for centralized session control of all applications, even SaaS apps

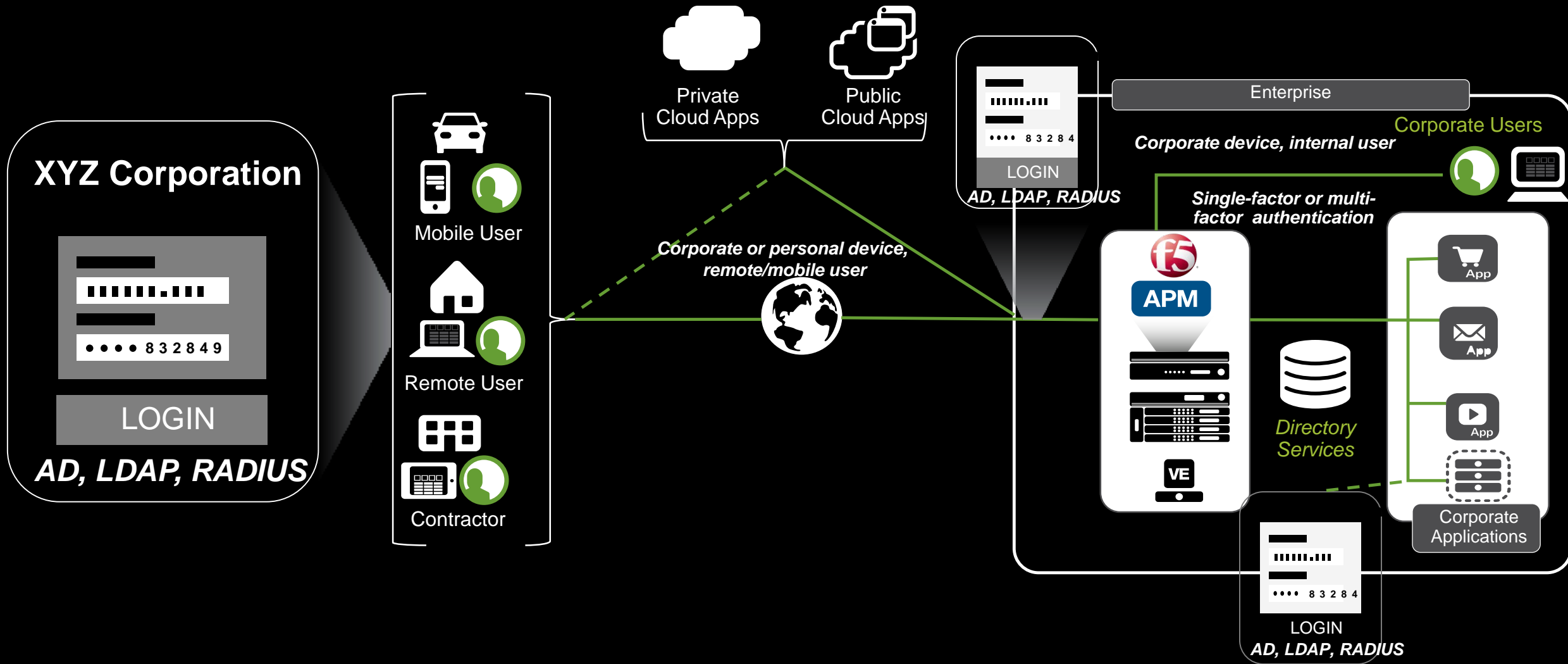


# Federating Identity

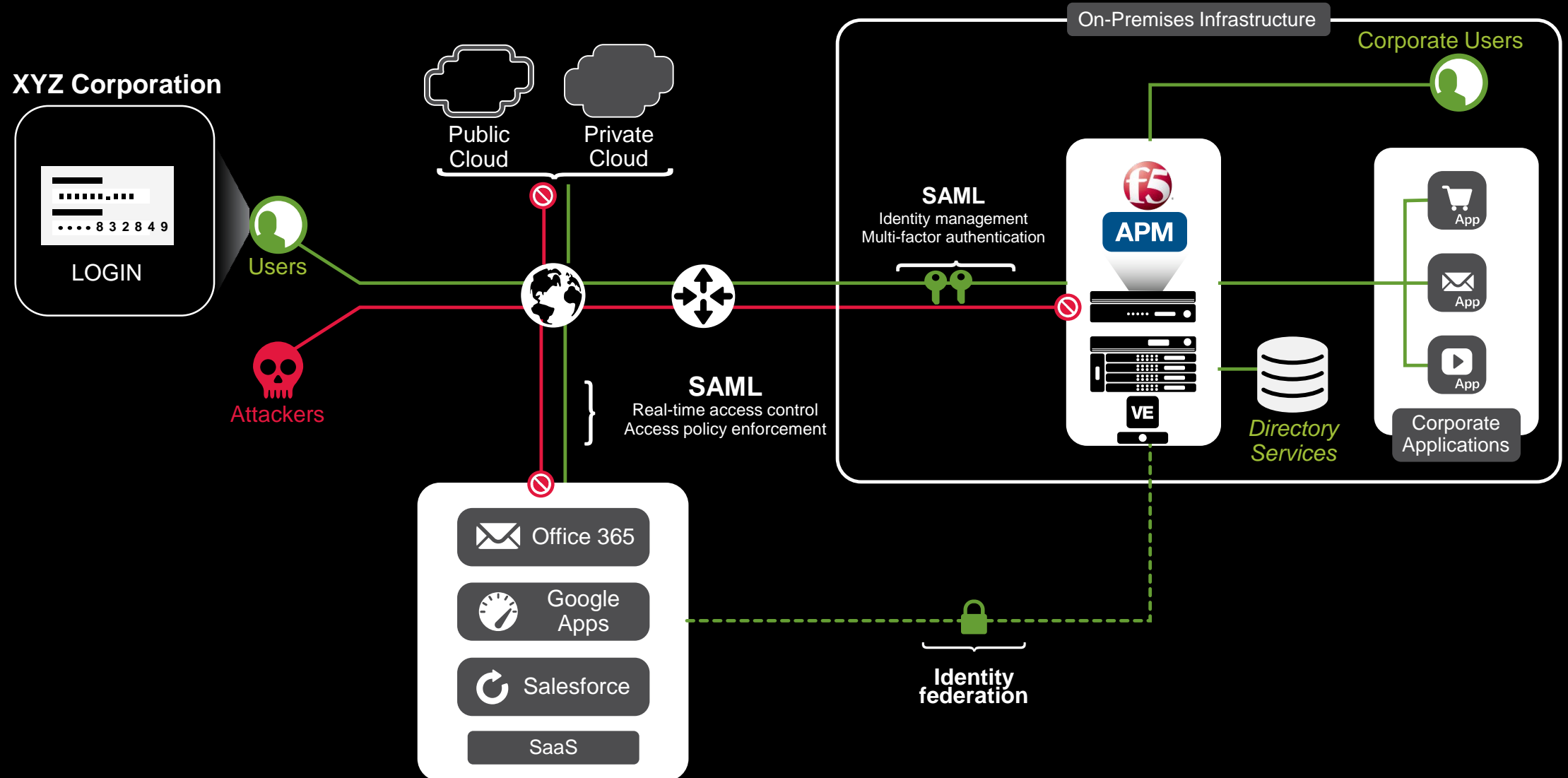


# Step-up Authentication

Anonymous access to and re-validation of AD, LDAP, or RADIUS flat-file authentication per request within an access session, for accessing additional, sensitive web URIs, or to extend a session



# Identity Federation with Multi-Factor Authentication



# F5 Has a Rich Ecosystem of Multi-Factor Authentication Partners



# Benefits of Identity Federation, SSO, and Adaptive Authentication with APM

- ✓ Dramatically reduces costs
- ✓ Delivers seamless access
- ✓ Increases user productivity
- ✓ Simplifies administration
- ✓ Enhanced adaptive access and authentication

# Summary



## Simplifies

Improves performance and usability, while simplifying administration



## Secures

Enhances application and virtualized apps and desktop security



## Protects

Expands data loss prevention and guards against web-based attacks



# Demonstration



# Questions & Answers

# Thank you



**SOLUTIONS FOR AN APPLICATION WORLD**