

WCO Data Model Conformant Customization Techniques with GEFEG.FX

**Efficient Adoption and Reuse of the
WCO Data Model**

- Official sales agent of the WCO Bookshop
- Official distributor of the WCO Data Model
 - GEFEG.FX with WCO Data Model Customization Package
 - GEFEG.FX with WCO Data Study Package



GEFEG.FX with WCO Data Model Customization Package

- Develop and maintain national or user specific customisations of the WCO Data Model, which can be used for the development of software applications, and which are automatically compliant to the WCO Data Model.
- Produce human-readable documentation of customisations with multilingual support
- Compare and report on differences between customisations
- Automated generation of WCO XML compliant profile schemas from WCO Data Model customisations.
- Mapping between WCO Data Model, its customisations, XML schemas, EDIFACT message implementation guides and administration or company specific applications.

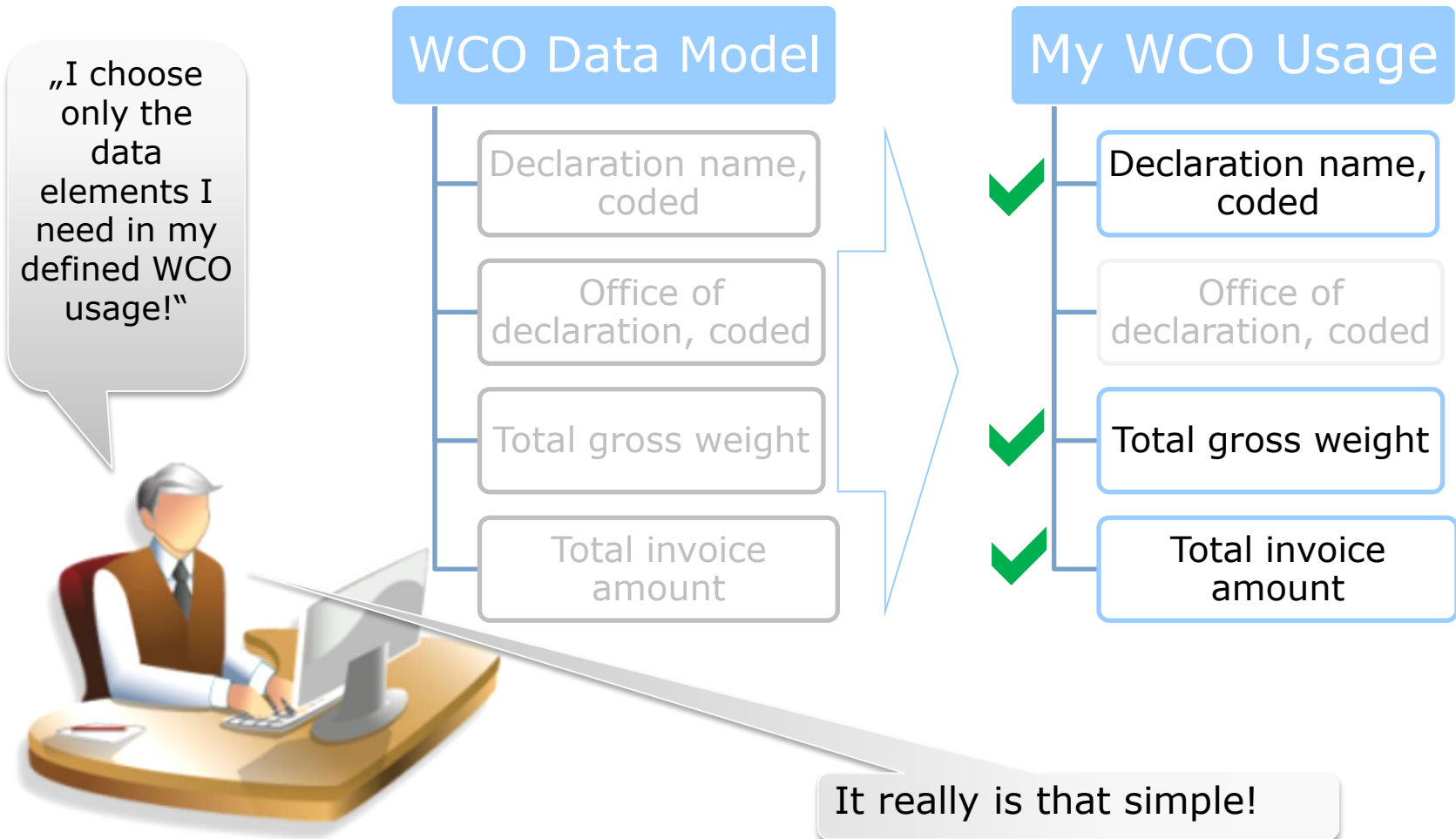
The GEFEG.FX User Community

- The World Customs Organization
- The Netherlands' Customs
- New Zealand Customs Service
- Canada Border Service Agency
- Bundesfinanzdirektion of Germany
- The Revenue Commissioners of Ireland
- Thai Single Window
- Customers from other industries include BMW, Volkswagen, DAKOSY, Deutsche Post, DHL, GS1, IATA, SAP, Schenker, Siemens, Philips, Toshiba, SWIFT, UNECE, and many other users in 35 countries

Support for Contextualisation

- **Restriction of data model structures** to remove those not required for use in national implementations
- **Addition of usage notes** for language translations, references to national legislation or message specific business rules etc.
- **Refinement of code values** for language translations, inclusion of national codes or restricted code lists

Simple effective use of WCO Data model



Business Needs Drive Implementation

Business Expert

Technical Implementer

My business contextualisations will be automatically „transformed“ to support my technical implementation team.

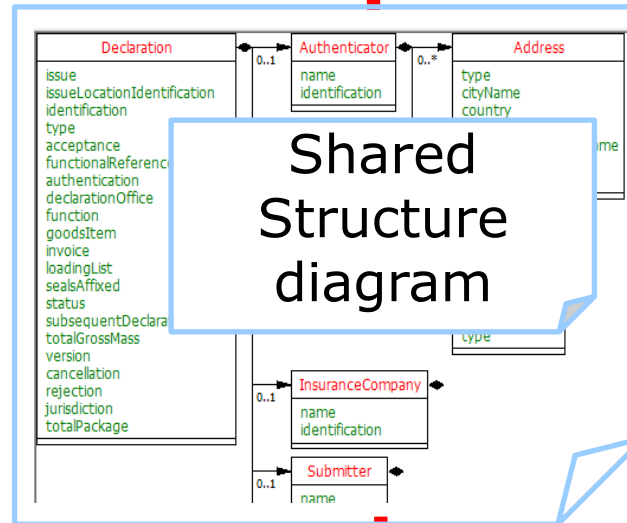
Business Usage Documentation

XML Usage Documentation

Schematron validation rules

XML Schemas (XSD)

Shared Structure diagram



Localized Usage - Cardinality

GEFEG.FX 6.1 SP1 - Professional+

File Edit View Reports Extras Window Help

Show all objects

Data model editor - WCO Data Model; 3.20; 09-09-2011

Main/DataModels/DeclarationModel/DeclarationModel/Declaration/function

Attribute Notes Enhanced Children

function

Id

Class: DocumentFunctionCode (Main)

Stereotype

MinOccurs: 0 (Original value: 0)

MaxOccurs: 1 (Original value: 1)

Fixed

Default

Data model editor - NZ TSW Export Dec Model; 1; 0

Main/DataModels/DeclarationModel/DeclarationModel/Declaration/function

Attribute Notes Enhanced Children

function

Id

Class: DocumentFunctionCode (WCO Data)

Stereotype

MinOccurs: 1 (Original value: 1)

MaxOccurs: 1 (Original value: 1)

Fixed

Default

Localized Usage – Code Restrictions

GEFEG.FX 6.1 SP1 - Professional+

File Edit View Reports Extras Window Help

Show all objects

Data model editor - WCO Data Model; 3.20; 09-09-2011

Main/DataModels/DeclarationModel/DeclarationModel/Declaration/function/Code. Content

Attribute Notes External code lists

Codes Enhanced Children

☐ Restrict codes

Code	Co...	Name
c 1	Doc...	Cancellation
c 2	Doc...	Addition
c 3	Doc...	Deletion
c 4	Doc...	Change
c 5	Doc...	Replace
c 6	Doc...	Confirmation
c 7	Doc...	Duplicate
c 8	Doc...	Status
c 9	Doc...	Original
c 10	Doc...	Not found
c 11	Doc...	Response
c 12	Doc...	Not processed
c 13	Doc...	Request
c 14	Doc...	Advance notification
c 15	Doc...	Reminder
c 16	Doc...	Proposal
c 17	Doc...	Cancel, to be reissued
c 18	Doc...	Reissue
c 19	Doc...	Seller initiated change
c 20	Doc...	Replace heading section on
c 21	Doc...	Replace item detail and sum
c 22	Doc...	Final transmission
c 23	Doc...	Transaction on hold

Attribute name (EN) Cancellation

Description Message cancelling a previous transmission for a given transaction.

Data model editor - NZ TSW Export Dec Model; 1; 0

Main/DataModels/DeclarationModel/DeclarationModel/Declaration/function/Code. Content

Attribute Notes External code lists

Codes Enhanced Children

☐ Restrict codes

Code	Co...	Name
c 1	Doc...	Cancellation
c 4	Doc...	Change
c 5	Doc...	Replace
c 9	Doc...	Original
c 22	Doc...	Final transmission

Attribute name (EN) Cancellation

Description Message cancelling a previous transmission for a given transaction.

Localized Usage – National Notes

GEFEG.FX 6.1 SP1 - Professional+

File Edit View Reports Extras Window Help

Show all objects

M Data model editor - WCO Data Model; 3.20; 09-09-2011

Main/DataModels/DeclarationModel/DeclarationModel/Declaration/authentication

Attribute Notes Enhanced Children

WCO ID 104

WCO NAME Authentication

WCO DESC Proof that a document has been authenticated indicating where appropriate the authentication party

WCO CLASS Declaration

WCO FORMAT an..35

EDifact AUT.9280

Code remarks User codes

Core Data Type Text

Procedure

IM X

EX X

CRI X

CRE X

CONV X

TRT X

RES

EDIFACT Mapping

&Id 340

Remark

StructureStatus

IM X

EX X

CRI X

CRE X

CONV X

TRT X

RES

M Data model editor - NZ TSW Export Dec Model; 1; 0

Main/DataModels/DeclarationModel/DeclarationModel/Declaration/authentication

Attribute Notes Enhanced Children

EDIFACT Mapping

&Id 340

Remark

NZTSW Name Authentication

NZTSW Status M

NZTSW Business Rule

Name

Description Must be transmitted to state the authentication result for the declaration

StructureStatus

IM X

EX X

CRI X

CRE X

CONV X

TRT X

RES

NZTSW Message Usage

ANA X

ICR X

IMPORT X

EXPORT X

CRE X

AND X

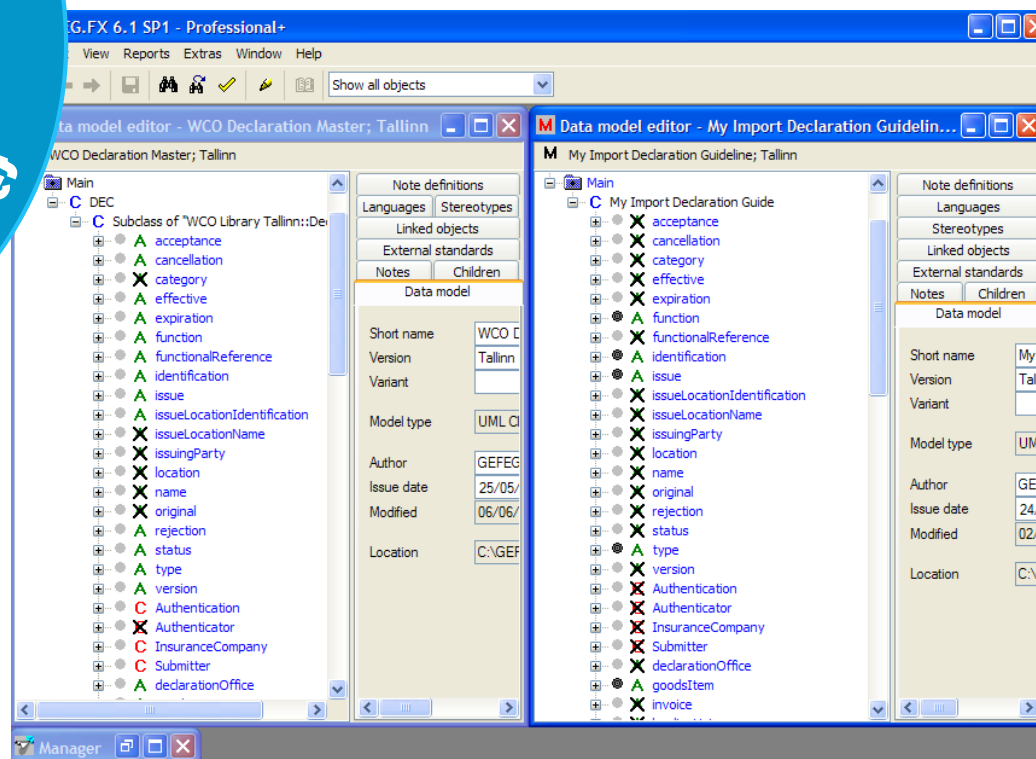
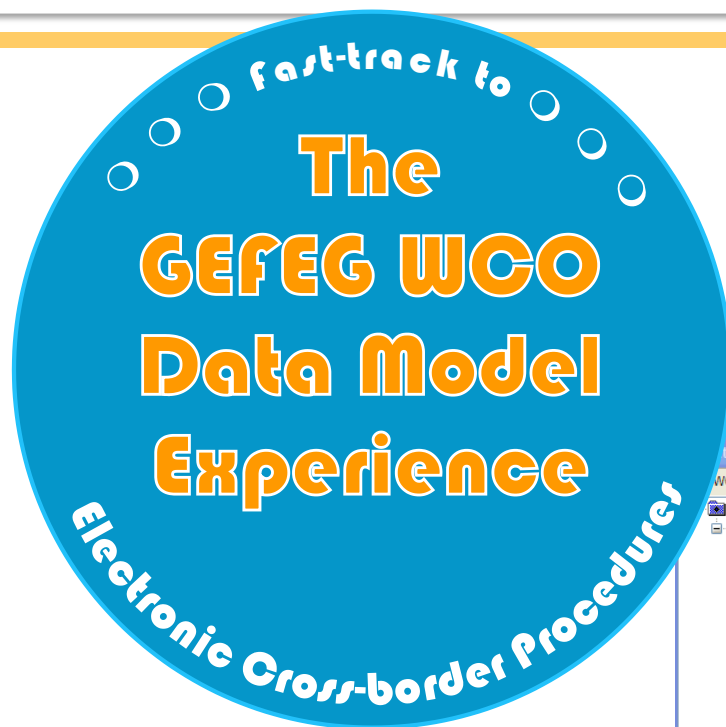
OCR X

ENCISE X

TRANSLT X

RES

Now come and can see for yourself...



Summary of Benefits

- Future-proof data interchange – one solution for data models, XML schemas and classic EDI
- Improved overview and monitoring of data and projects
- Reusable content reduces development time, increases quality and consistency of e-business messages
- Single-source modeling approach provides for elimination of data redundancy resulting in reduced maintenance costs
- Unique layered guide concept provides IPR protection and supports eStandards migration and continued compliance with the WCO Data Model

Thank You for Your Attention

Michael Dill

CEO

Phone +49-30-979914-69

Email michael.dill@gefeg.com

GEFEG mbH • Storkower Str. 207 • 10369 Berlin, Germany

Web www.gefeg.com