



SARS CUSTOMS PRESENTATION ON CONNECTIVITY

Estonia - June 2012

“The state or quality of being connected or connective: *the benefits of global connectivity.*”

(Dictionary.com)

CONNECTIVITY

“The state of being connected or interconnected”

(Oxford Dictionary)

“Measure of the extent to which the components of a network are connected to one another, and the ease with which they can converse”

(Businessdictionary.com)

“Connectivity encompasses people-to-people, institutional & information linkages that underpin and facilitate the achievement of Customs”

(Secretary General: WCO)

“The ability of computers and other types of electronic equipment to connect successfully with other computers or programs”

(Macmillan Dictionary)

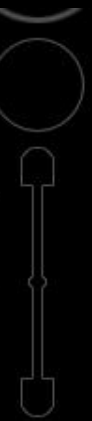
(Businessdictionary.com)

(Secretary General: WCO)

(Macmillan Dictionary)

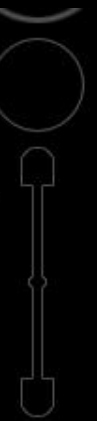


Data SIO, NOAA, U.S. Navy, NGA, GEBCO





Data SIO, NOAA, U.S. Navy, NGA, GEBCO



G2G

Connectivity between Governments

- Trade Agreements
- MAA and MOU - Sharing of Information
- Facilitation & Security - Mutual Recognition



Data SIO, NOAA, U.S. Navy, NGA, GEBCO
US Dept of State Geographer



Data SIO, NOAA, U.S. Navy, NGA, GEBCO
US Dept of State Geographer

C2B

Connectivity between Customs and Traders

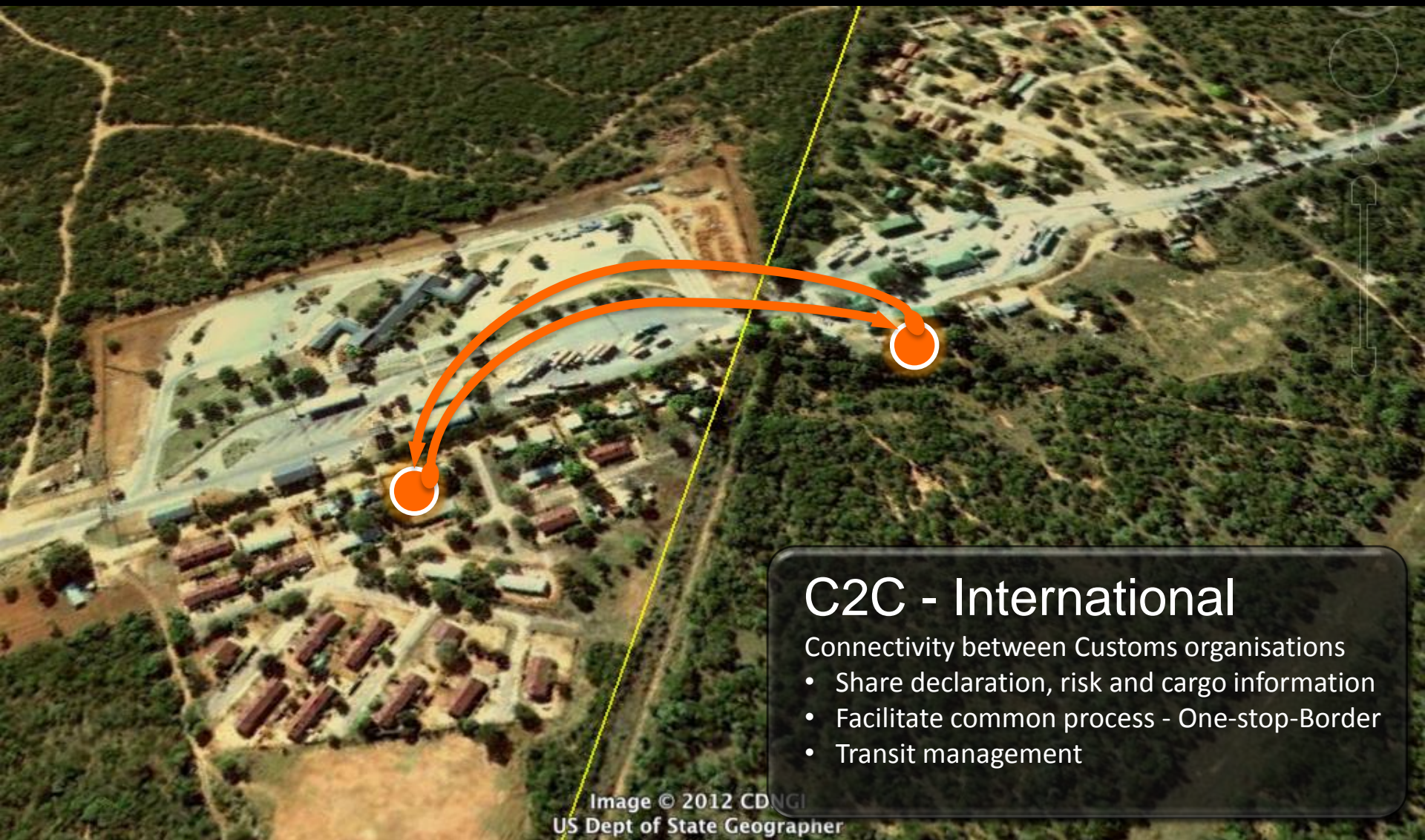
- EDI / XML declaration submissions
- Electronic supporting information
- Authorised Economic Operator
- Third party validations
- Common digital tariff book

South Africa

Data SIO, NOAA, U.S. Navy, NGA, GEBCO
US Dept of State Geographer



Data SIO, NOAA, U.S. Navy, NGA, GEBCO
US Dept of State Geographer



C2C - International

Connectivity between Customs organisations

- Share declaration, risk and cargo information
- Facilitate common process - One-stop-Border
- Transit management

Image © 2012 CDNGI
US Dept of State Geographer



US Dept of State Geographer
Image © 2012 GeoEye

C2G

Connectivity between Customs & OGA's

- Share declaration, risk and cargo information
- Facilitate common process - Single Window
- Transit management

US Dept of State Geographer
Image © 2012 GeoEye

C2C - National

Connectivity within the Customs organisation

- Specialised processing centres of excellence
- Mobile inspections & Remote image analysis
- Integration of processing & border management

US Dept of State Geographer
Image © 2012 GeoEye

The Facets of Delivery - People

A blue rounded square button with a subtle gradient and a reflection below it. The word 'PEOPLE' is written in white, bold, sans-serif capital letters in the center.

PEOPLE

BUSINESS ISSUE

- Menial, non value adding tasks.
- Need to see the paper - “Digiphobia”.
- Fear of change and unknown.
- Gate-keeping mentality.
- Resource & capability constraints.

SOLUTION

- Automate the Norm, Manage the Exception!
- GUI - based on what’s known!
- Make it exciting to own!
- Remove the choice - risk management!
- Capacity based & process driven intervention!

The Facets of Delivery - Policy

A blue, rounded rectangular button with a subtle gradient and a reflection below it. The word 'POLICY' is written in white, bold, sans-serif capital letters in the center.

POLICY

BUSINESS ISSUE

- Disparate and uncommon policies.
- Control driven and paper dominated.
- Functional orientation.

SOLUTION

- Standardise & Simplify!
- Risk-based and delivery driven!
- Process orientation!

The Facets of Delivery - Process

A blue rounded square button with a subtle gradient and a reflection below it. The word 'PROCESS' is written in white, bold, uppercase letters in the center.

PROCESS

BUSINESS ISSUE

- Functional orientation - work build up.
- Paper-based manual processing.
- Disconnected processes.

SOLUTION

- Capacity orientation - risk-based intervention!
- Electronic data rich processing!
- Automated data driven workflow!

The Facets of Delivery - Technology

A blue rounded square button with a slight gradient and a reflection below it.

TECHNOLOGY

BUSINESS ISSUE

- Different data requirements.
- Inaccurate data.
- Capturing delays and errors.
- Various systems.
- Inability to reconcile data.

SOLUTION

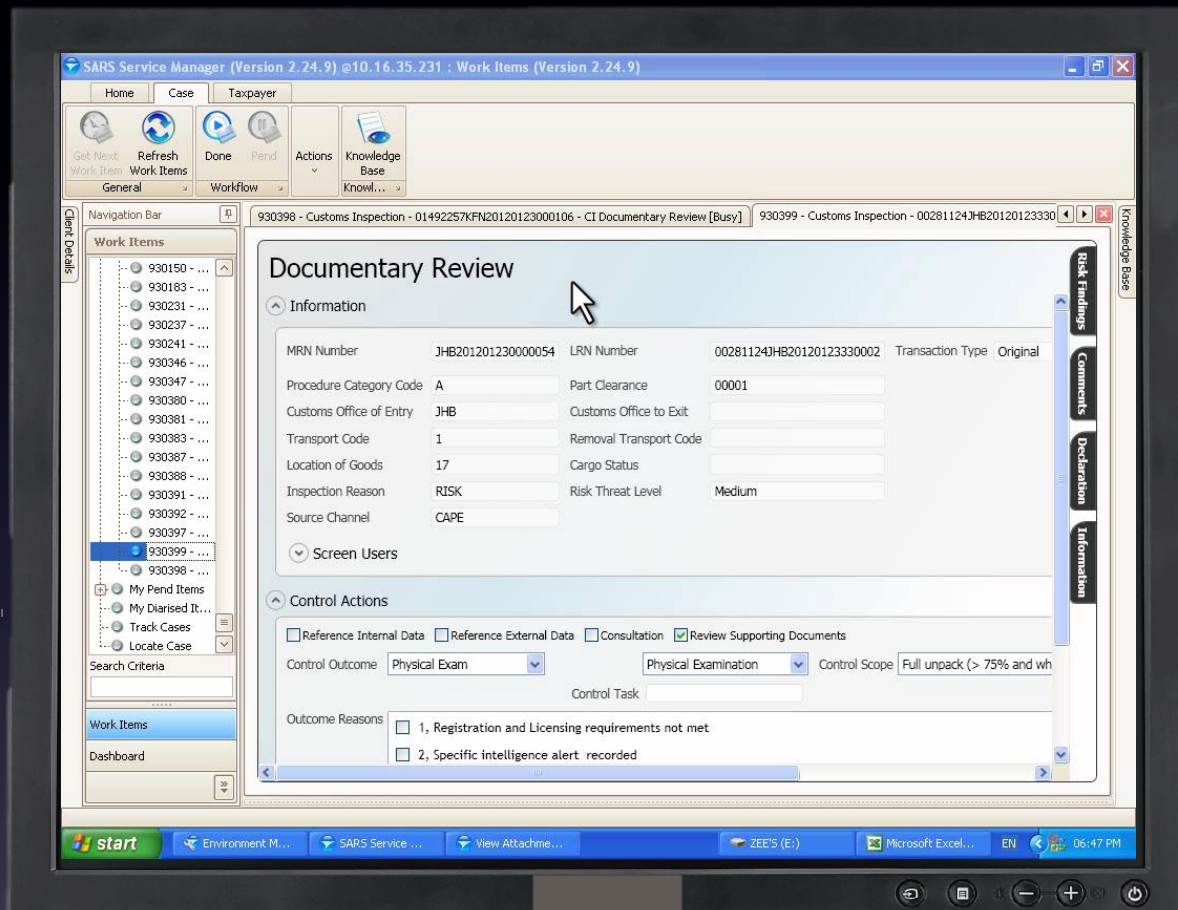
- Common data dictionary - WCO Data Model!
- Upfront Validations - prevent not cure!
- Pre-population of common data!
- Common interface and data protocols!
- Unique keys - UCR!



2



**Review of Electronic
Supporting Documents
at Centralised
Processing Centre**



**Consignment marked for Examination
from Processing Centre**

**Clearance received
and Carrier proceeds
to Border**



**Manifest number
presented on arrival**

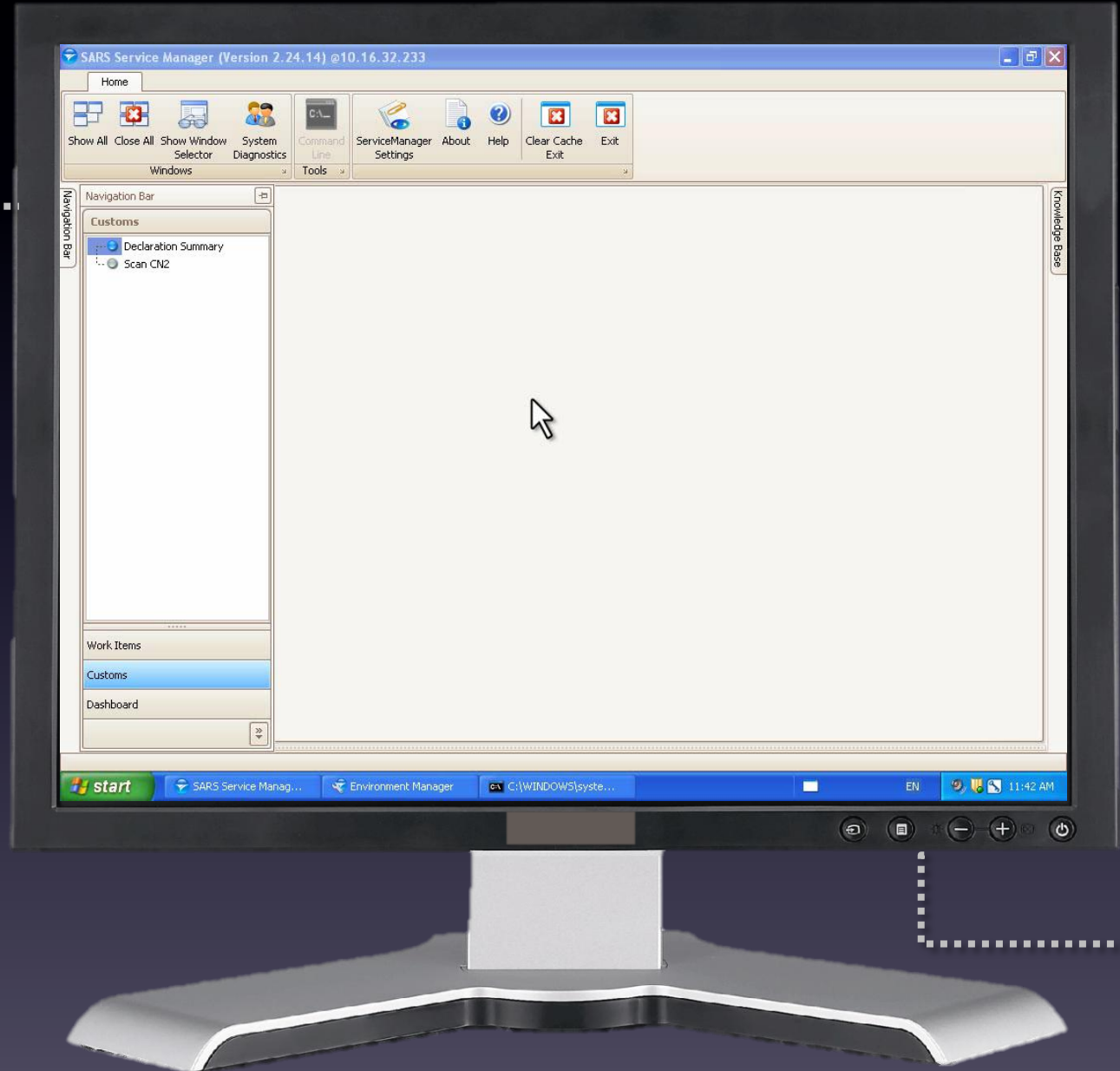
3

4

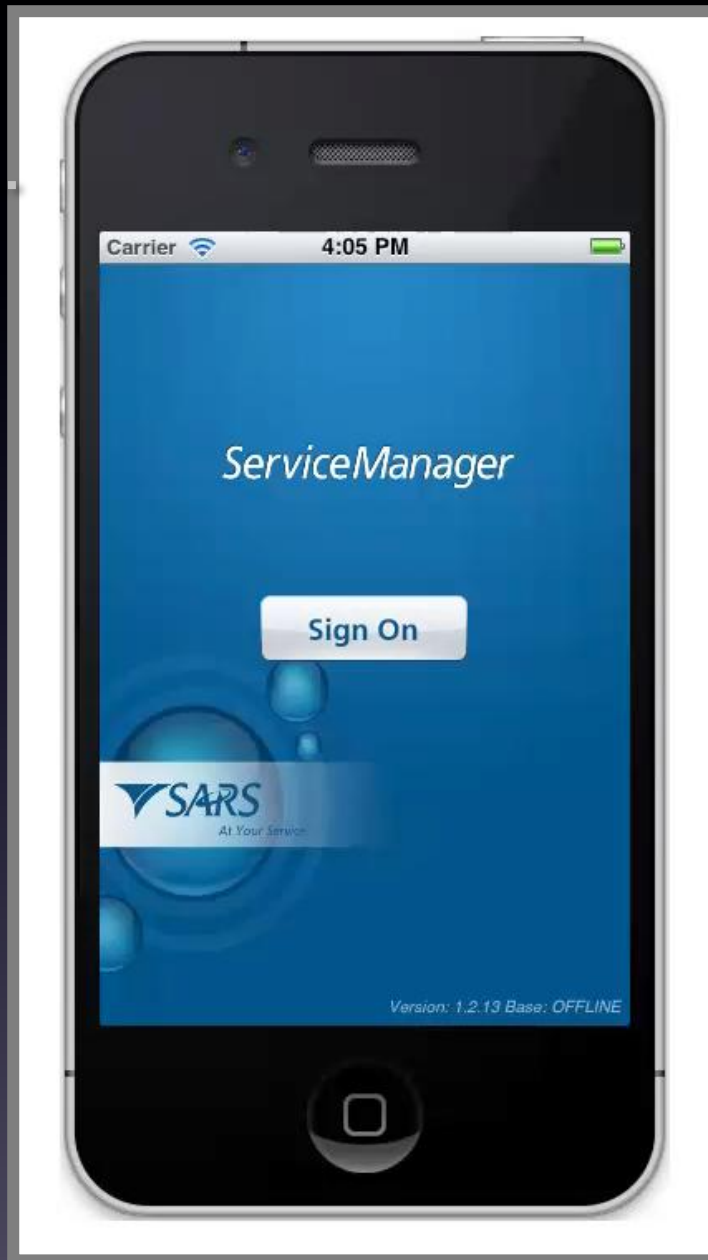
5



**Record arrival of Truck
at Border Post using
Manifest Number**



6



**Examination conducted
and finalised at Border.**



END

Connectivity – Continued

A blue rounded square with a reflection below it, containing the text 'REGIONAL CONNECTIVITY' in white, all-caps, sans-serif font.

REGIONAL CONNECTIVITY

- WCO Workshop
 - 7 Countries
 - SACU & SADC Secretariat
 - UNCTAD
- GNC Utility Block - C2C
 - Connectivity - Priority 1
 - Agreed Data Model
 - Agreed Process - Transit
 - Agreed Plan
- Signed-off at SACU

Hope I connected with you

**Presented by
Intikhab Shaik**

Group Executive: Business Systems

E-mail: ishaik@sars.gov.za

June 2012
www.sars.gov.za



Thank You