

# **Cyber crime –**

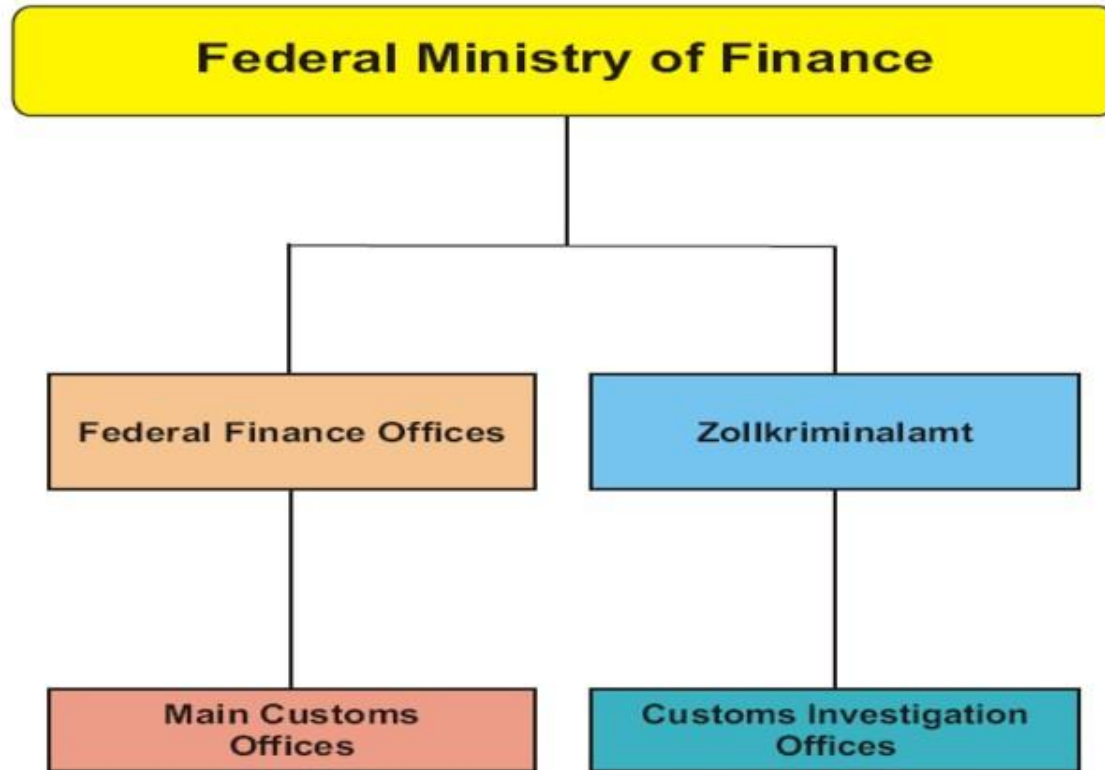
## **A view from the German Customs Investigation Service's perspective**

**Dieter Wurche  
Zollkriminalamt  
Cologne / Germany**

## Contents:

- What does „cyber crime“ mean for German Customs ?
- Customs as target of cyber crime
- Customs as law enforcement agency combating cyber crime / internet based crimes

## Organization of the German Customs Administration



## **What does „cyber crime“ mean for German Customs ?**

- Cyber security
- Combating of cyber crime:
  - „Computer-related fraud“ ?
  - Illicit data transfer ?
  - „Internet-related crime“ !

## **„Cyber security“ or: Customs as target of cyber crime**

- Strong legal requirements to protect citizens'/companies' data (data protection rules, tax code, ...)
- 2011 „PATRAS incident“: Customs (investigation) GPS tracking data compromised – criminal offense
  - Media and parliamentary attention
  - New IT security concept
  - Challenge to remain „up-to-date“

## Challenge of **secure communication**

- With other domestic agencies
- Internationally

Within the worldwide Customs community:

→ WCO's CEN email (CEN = Customs Enforcement Network) & CENcomm

## **Combating of cyber crime / internet-related crime by Customs:**

- Is Customs competent agency for computer-related fraud and forms of illicit data transfer ? (e.g. child pornography, copyright violations, illegal technology transfer/export regulations, money laundering)
- Combating of internet-related crime relevant for Customs (counterfeit items/IPR, pharmaceuticals, weapons, exciseable goods, .....)

## **Combating of internet-related crime relevant for Customs (cont'd):**

- Usually requires physical (transborder) movement of goods
- Specialized German unit („ZIRE“):
  - 24 officers, unit initiates and supports investigations
- International operations, e.g. OP Pangea 1 to .. (INTERPOL/WCO)
- National: e.g. „Project Blue“ (pharmaceutical crime, co-operation with credit card/payment providers)



Challenge of investigating offences /  
collection of evidence involving the use of  
the internet:

- Communication between suspects or  
seller/customer or ...
- Transfer of funds
- ....

→ Technical and legal issues

→ Enhancement of international co-  
operation !

**Thank you for your attention !**

**Contact:**

**[dieter.wurche@zka.bfinv.de](mailto:dieter.wurche@zka.bfinv.de)**

**[www.zoll.de](http://www.zoll.de)**